

Community Consultative Committee Meeting 72

AGENDA

Date: Wednesday 12th March 2025

Time: 1:00 pm

Location: Moolarben Coal Complex Open Cut Main Board Room

Meeting Agenda:

1. Welcome and Acknowledgement of Country
2. Apologies
3. Declarations
4. Business arising
5. Correspondence report (attached)
6. CCC update
7. General business
8. Next meeting.



SITE: 12 Ulan-Wollar Road, Ulan
NSW 2850 POSTAL: Locked Bag 2003, Mudgee
NSW 2850 PHONE: +61 2 6376 1500
WEBSITE: www.moolarbencoal.com.au
ABN 59 077 939 569

MOOLARBEN COAL OPERATIONS - COMMUNITY CONSULTATIVE COMMITTEE
MEETING No. 72
Minutes

Date: Wednesday 12th March 2025
Time: 3:00 pm
Location: Moolarben Coal Open Cut Administration Board Room, Ulan
Attendance: Independent Chairperson
Deborah Palmer (DP)

Community Members

Dr Julia Imrie (JI)
Bev Smiles (BS)

Moolarben Coal Operations

Brian Wesley (BW)
Ian Flood (IF)
Rebecca Shanks (RS)
Morgan Yeatman (MY) {Minute taker}

Apologies

Mayor MWRC - Cr Des Kennedy (DK)
MWRC Delegate - Cr Katie Dicker (KD)
David Stokes (DS)
Helen Ungaro (HU)
Aleisha Lonsdale (AL)

Meeting 72 Agenda and Presentation were provided to all meeting attendees.

Site Tour (1:00pm – 3:00pm)

The Moolarben Coal Operations Site Tour was conducted following a request of the CCC members. The purpose of the tour was to inspect key infrastructure, ongoing dewatering operations, subsidence impacts, and environmental monitoring locations. The visit provided an opportunity to view key groundwater monitoring bores and pipelines and inspect impacts of mining activities on surface stability and vegetation. The visit also included exploration rehabilitation..

Site tour of the MCO Underground 4 area commenced at 1 pm, with all attendees participating. MCO provided all attendees a map of the Underground 4 area that included an aerial photo, underground 4 mine plan layout and key points of interest visited on the tour. The site tour was completed prior to the commencement of the standard CCC meeting.

Below is a summary of the key discussion points during the tour. Due to the nature of the tour, not all conversations were able to be captured by the Chairperson.

Thank you to the tour organisers for their time and effort in facilitating this visit.

Discussion points:

Discussion between start of tour and PZ236

- Black and white pipe running alongside track (Water supply pipeline)
 - The pipeline was initially intended for water supply. In the future it can also be used for dewatering services if required.
- Piezometer (PZ) 236A (decommissioned)
 - The monitoring bore was decommissioned due to bore integrity issues. Resulted in P236B being installed.
- PZ236B (Current monitoring bore)
 - The small water tank is located here for operational purposes.
 - The bore monitors multiple aquifer depths:
 - Depth: 85m, 110m, and 157m.
- PZ236 (monitoring bore)
 - Open hole aquifer monitoring.
 - Site clearing has been carried out for access to the front road.

Discussion between PZ236 and Exploration Site MCD495

- JI asked to view monitoring piezos PZ235 (north area UG4) and PZ103. This was not part of the planned tour on the day.
- Bluff and longwall proximity
 - The bluff is within the MCO land boundary but outside the longwall area.
 - The longwall extraction stops short of the bluff.
- Pit props
 - Traditional pit props are rarely used now.
 - Mechanical support systems are predominantly in place.

Discussion at subsidence surface cracking site

- Subsidence and surface cracking
 - Examples observed over the extracted longwall areas.
 - Cracking and subsidence detected at the edges of some pillars. In the middle of the pillars there is less cracking.
 - Approx. 3cm cracking observed, noting impacts of rainfall.
 - JI noted there was stepping of 300 – 400mm within 2-3 m of the road.
 - It was noted that when subsidence does occur it is not a sudden drop but happens over time.
 - White pipe that runs alongside the road carried an indicative 3 megalitres per day.
 - When asked why the panels run north to south in this location, MCO responded it would be outlined within the original consent as to why the direction was chosen.
- Dewatering site
 - Dewatering infrastructure directly supports underground mining activities.
 - No ventilation fans installed at the dewatering site.
 - Discussion at Exploration site MCR 1073
- Exploration Site MER 1073
 - An example of longwall subsidence looking along the road looking at longwall 404-405
 - Drill hole rehabilitation completed in 2022. Site has not yet been relinquished.
 - The dipping in the land was noted as combination of subsidence and natural topography; no significant impact on pipelines.
- PZ locations and site visits
 - PZ 232 was not visited due to cracking in the road. It was noted that the infrastructure looks like the PZ's visited earlier in the tour.
 - PZ 195 was not on the visit itinerary.
- Vegetation monitoring
 - Vegetation dieback attributed to drought.
 - Baseline data indicated dieback in areas prior to mining.
 - Annual vegetation monitoring is required each spring, with findings compiled in annual reports.

Discussion on drive to the end of the tour

- CHPP (Coal Handling and Preparation Plant)
 - Current workforce: 1,200 personnel.
 - Annual production target: 21 million tonnes.
 - Approval is for 24 million tonnes per year.
- Energy infrastructure (EnergyCo)
 - Expansion of easement required to accommodate infrastructure including 2 x 500 kV transmission lines.
 - Transmission line height will be increased above what currently exists.
 - The helipad will need to be relocated to accommodate the lines.

Meeting 72 (3:00pm – 3:53pm)

1. Introduction and welcome

Deborah Palmer (DP) provided an Acknowledgement of Country and paid respect to Aboriginal leaders, past, present, and emerging, opened the meeting and welcomed all attendees to the Moolarben Coal Operations (MCO) Community Consultative Committee (CCC).

2. Apologies

- MWRC Delegate - Cr Katie Dicker (KD)
- David Stokes (DS),
- Helen Ungaro (HU)

3. Declarations

- DP declared her role as an Independent Chairperson, appointed by DPHI and engaged by MCO.
- JI repeated a potential conflict of interest with the proposed undermining of Saddlers Creek Road on her home and business.

4. Business arising from previous minutes

- DP confirmed previous meeting minutes finalised and distributed on 9 January 2025.

Actions from Meeting 71:

1. Notify the CCC if there is an exceedance of water quality data because of the event on 18 November 2024.
2. Provide an aerial of UG4 with identifying features.
3. Arrange a field trip to the UG4 area.
4. Investigate the maps for the EPBC query.
5. Confirm 2025 meeting schedule.

Items 1 & 4 addressed in the presentation. Closed.

Items 2 & 3 addressed in the site tour. Closed.

Item 5 addressed by DP and calendar invitations sent 10 December 2024.

5. Correspondence science last meeting

- 09/12/24 – Email from the Chairperson to members – Annual Report – your feedback – opportunity for members to provide input to the annual report
- 10/12/24 – Calendar invitations for the 2025 meetings sent from the Chairperson to members (4 invitations)
- 13/12/24 – Email from the Chairperson to members – December meeting minutes for comment
- 14/12/24 – Email from JI to the Chairperson – comments on the December meeting minutes
- 14/12/24 – Email from the Chairperson to JI – acknowledging receipt of comments
- 20/12/24 – Email from the Chairperson to members – Final December meeting minutes
- 20/12/25 – Email from the Chairperson to members on behalf of Yancoal – MCO community newsletter
- 06/01/25 – Email from KD to the Chairperson – input to the annual report
- 06/01/25 – Email from the Chairperson to KD – acknowledging receipt of comments

- 09/01/25 – Email from the Chairperson to members – correction to the December 2024 minutes. March meeting start time.
- 07/02/25 – Email from DL to the Chairperson – resignation from the group
- 10/02/25 – Email from the Chairperson to DL – acknowledging receipt of email of resignation
- 22/02/25 – Email from the Chairperson to members – Draft March agenda for comment, December minutes and Annual Report. Notification of DL resignation
- 22/02/25 – Email from Chairperson to DPHI – Moolarben Coal CCC Annual Report
- 26/02/25 – Email from the Chairperson to members – reminder for comments on the agenda and sit tour to go ahead
- 26/02/25 – Email from JI to the Chairperson – request to visit specific sites on the site tour
- 26/02/25 - Email from Chairperson to JI – acknowledging receipt of request and noting request has been forwarded to Yancoal
- 05/03/25 – Email from the Chairperson to members – final March agenda and details of site tour. Request for RSVPs
- 05/03/25 – Calendar invitation from the Chairperson to members for the site tour
- 07/03/25 – Email confirmation from KD, BS, JI to attend site tour
- 11/03/25 – Email from Chairperson to members – site tour RSVP

The Chairperson noted following DL’s resignation from the group, a recruitment process for a new community member would commence.

6. CCC update presentation

6.1 2025 Community Support Program

- An update on the 2025 Community Support Program (CSP) and Community Events for the quarter was provided. An advertisement clip for the 2025 MCO CSP from the Mudgee Guardian was displayed on the presentation.

6.2 MCO Contributions

- MCO’s Economic contributions for 2024 to the Mid-Western Council area, NSW and to Australia were summarised.

6.3 Open-cut operations

- Operational update
 - Operations continue in OC1, OC2 (rehab activities only), OC3, and OC4 areas.
 - Water treatment plant (WTP) operations continue.
 - In response to Action Item 1 from meeting 71 RS answered that no exceedance of water quality criteria, as confirmed by water quality testing, had occurred due to the event on the 18 November 2024.

Discussion:

- The CCC discussed the extraction levels from the open cut mine and this was confirmed by MCO as 16m ROM tons per year, spread evenly across the year
- BS asked where operational mining areas were currently. IF answered using the presentation map to assist, highlighting the blue areas.

6.4 Underground operations

- Longwall mining currently in LW406.

- Underground development continues in UG4, with progression towards UG2.
- The UG4 Extraction Plan for LW409-414 was submitted 17th Jan 2025.
- IEAPM completed a MCO site visit 18th February 2025 and are currently reviewing the extraction plan.

Discussion:

- JI inquired as to who was the chair of the IEAPM visit to UG4 on 18 Feb (Chair's name was provided)
- RS stated as per JI email data query, PZ-A has not yet been drilled. PZ232 won't be replaced as had been stated in previous meetings. The average underground water make was; November 2024 – 9.5ML/day, December 2024 – 9.9 ML/day, January 2025 – 9.7ML/day and February 2025 – 10 ML/day. DPHI have not yet approved the groundwater trigger levels associated with the extraction plan. Once these are confirmed MCO will notify the CCC.

6.5 Exploration

- Drilling activities are planned to continue in ML1715 and ML1605, as well as commencing and continuing in EL6288 and EL7073.
- Indicative drill site locations were added to this meetings figure.
- Rehabilitation and monitoring activities are ongoing in exploration areas.

Discussion:

- JI asked if all exploration drill sites in EL6288 were approved. IF replied they were approved under the APO process. JI asked if there was any exploration in the EnergyCo land. RS replied there was not.

6.6 Environmental monitoring

- Licensed water discharge – EPA01 – all results are within compliance levels.
- Stream flow in the Goulburn River showing responses to rainfall.
- An update on water quality was also provided (slides 12-14).

Discussion:

- BS stated there was greater movement in the discharge zinc figures. IF stated the RO process treated water as required for the criteria. JI and IF discussed the RO process including adding permeate water back to the treated water prior to discharge.
- JI stated that the monitoring indicated a loss of flow in the Goulburn River between SW02 and SW22 monitoring locations and noted concerns the active gauging is not accurately recording flow. The group discussed monitoring of flow between the points on the Goulburn River. JI requested an investigation into monitoring methodology measuring flow at SW22 (**Action item 1**).
- JI asked when LW407 would finish. BW stated it would be completed the end of this 2025 into the start of 2026.
- JI stated water quality data showed increasing pH as flows moved downstream through the Goulburn River. JI stated this could indicate seepage in the river possibly from the original UlanCoal open cut adjacent to the diversion between the upstream and downstream monitoring locations affecting pH.
- **Action item 2:** JI requested MCO investigate the rise in pH of the Goulburn River system. JI stated GW bore background levels on their property were around 7 pH unit.

6.7 Air Quality, Blasting, Noise, and complaints

- Air quality monitoring results for PM10 and PM2.5 are within criteria limits, as published in monthly monitoring reports.
- Blasting results during the period were consistent and compliant.
- Noise monitoring indicates compliance with all criteria, with ongoing implementation of planning, engineering, and operational controls.

Discussion:

- JI discussed the RFS access complaint. IF stated the complaint had been reviewed internally regarding access to keys and amended procedure put in place. IF confirmed if response times are delayed it would be allowable to cut a locked gate chain if required after making contact to confirm safety matters. IF stated the MCO Bushfire Management Plan was lodged with RFS in Mudgee. Further discussion around RFS and MCO interaction, cooperation and response processes, with BS and JI noting there should be greater cooperation and support from MCO to deal with fires that are within or near the mine boundary considering the risk posed by the location of the coal stockpiles.

6.8 Rehabilitation

- During 2024 43.8 hectares were shaped, and 47.1 hectares were seeded.
- Landform shaping and drainage works continuing in OC2, OC3 and OC4.
- Ongoing rehabilitation maintenance includes erosion control and weed management.

Discussion:

- BS asked if MCO had any areas of signed off rehabilitation. RS replied currently only relevant exploration sites had been signed off. IF noted areas of OC1 were identified as being potentially ready for rehabilitation certification.
- **Action item 3:** BS requested current rehabilitated vs disturbed figures.

6.9 Biodiversity offset areas update

- Offset maintenance works including track maintenance, erosion repairs, vertebrate pest control and weed management programs underway.
- Ground preparation works for 2025 offset tree planting program in progress for the Bobadeen and Onsite Offsets.

6.10 OC3 Extension – amended project

- MCO has lodged a consolidated response to all advice received from Agencies and the Independent Expert Advisory Panel for Mining (IEAPM) in November 2024.
- DPHI now completing assessment of Amended Project with input from Agencies and IEAPM.
- Presentation illustrating koalas identified by recent Lock the Gate group showing locations were outside of the proposed OC3 Ext disturbance limit.

6.11 NSW EnergyCo Transmission project

- Presentation on information on the NSW EnergyCo transmission infrastructure modification.
- Indicated timing for works: Intersection upgrades May 2025, easement clearing Aug 2025, footings construction Sept 2025.

Discussion:

- In response to Action Item 4 from meeting 71 RS stated the UG4 area was excised out in MOD14 (2019) and EPBC2007 credits were applied to Gilgal unrelated to the EnergyCo easement. BS noted the CCC was never informed of this change. RS confirmed the area is still an offset under NSW approvals. **Action item 4:** JI requested feedback be provided to better understand the credit changes.

6.12 Saddlers Creek Road intersection

- MCO is required to upgrade the intersection of Ulan Road at Saddlers Creek Road. Meeting with Council this week to discuss approval.

6.13 Employment update

- 35 Trainees onsite
- 32 Apprentices onsite

Discussion:

- BS asked if there are still vacancies. BW stated operations had almost full employment with normal turn over.

7. General business

- BS asked, regarding the MCO provided UG4 tour aerial map; cleared areas seen on google maps were not addressed in the tour. BW stated areas were still young and rehab takes time to progress.
- JI noted that during the tour there appeared to be a lot of dead mature trees in the LW405-401 panel area. JI asked what monitoring was conducted pre-mining. **Action item 5:** RS stated the UG4 monitoring report was available online. The report can be location on the Moolarben Coal website: chrome-extension://efaidnbmnnnibpcajpcglclefindmkaj/https://www.yancoal.com.au/wp-content/uploads/2024/10/333219_9-technical-report-4-biodiversity-technical-report.pdf section 2.7 specifically discusses the baseline condition.

8. **Next meeting:** 11 June 2025 at 2:00 pm onsite with a proposed site tour prior to the meeting.

Meeting closed at 3:53 pm with DP thanking members for their attendance and participation.

Action Items:

Item	Action	Responsibility
1	MCO to investigate perceived surface water flow loss of Goulburn River between SW02 and SW22.	MCO
2	MCO to investigate the rise in pH of the Goulburn River system.	MCO
3	Provide current hectares of rehabilitated land versus disturbed land.	MCO
4	Include in the meeting minutes information regarding the removal of biodiversity credits from area in UG4.	MCO
5	Provide UG4 pre-mining ecology monitoring report link including noting the section regarding drought affected vegetation.	MCO

Community Consultative Committee Update

March 2025

Moolarben Coal Operations



2025 Community Support Program (CSP)

Yancoal-Moolarben Coal CSP Events for the prior quarter included:

- Merriwa Can Assist
- Mudgee Showground Christmas Carols
- Mudgee Charity Golf Day
- ACE Genetics Youth Development Day
- Mudgee Show 2025



In 2025, Moolarben Coal will provide funding for over 35 community projects through our Community Support Program.

The program funds local projects that benefit:

- Education
- Environmental sustainability
- Healthcare
- Infrastructure
- Arts
- Cultural Heritage

Since 2010, Moolarben has invested over \$1,200,000 in funding to community groups and projects in the Mid-Western Region, reinforcing our commitment to creating a lasting, positive impact beyond mining. We proudly support initiatives that help local communities grow, thrive, and prosper.

With over 1,000 employees in our workforce, most residing in the Mid-Western Region, we take pride in our close connection to the community. Many of our employees are actively involved in, or benefit from, the organisations we partner with.

Congratulations to all grant recipients. We look forward to seeing your projects enhance the lives of people living in our community.



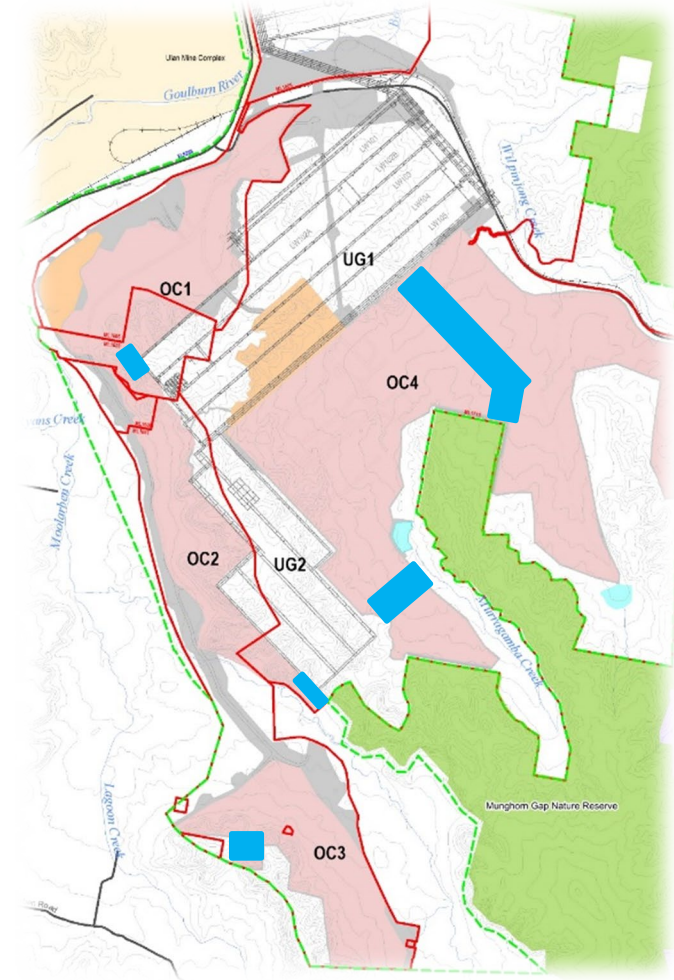
MCO Contributions

In 2024 Moolarben Coal Operations resulted in:

- Direct economic contribution to the Mid-Western Regional Council area of \$187 million.
- Total value-added economic contribution to the Mid-Western Regional Council area of \$357 million.
- Direct economic contribution to NSW \$1.2 billion, including \$241 million in state royalty payments.
- Direct economic contribution to Australia of \$1.6 billion
- \$159 million in wages to 895 full time employees, 684 of whom reside in the Mid-Western Regional Council area.
- Engagement of 123 local suppliers, generating \$56 million in revenue for these MWRC area businesses.

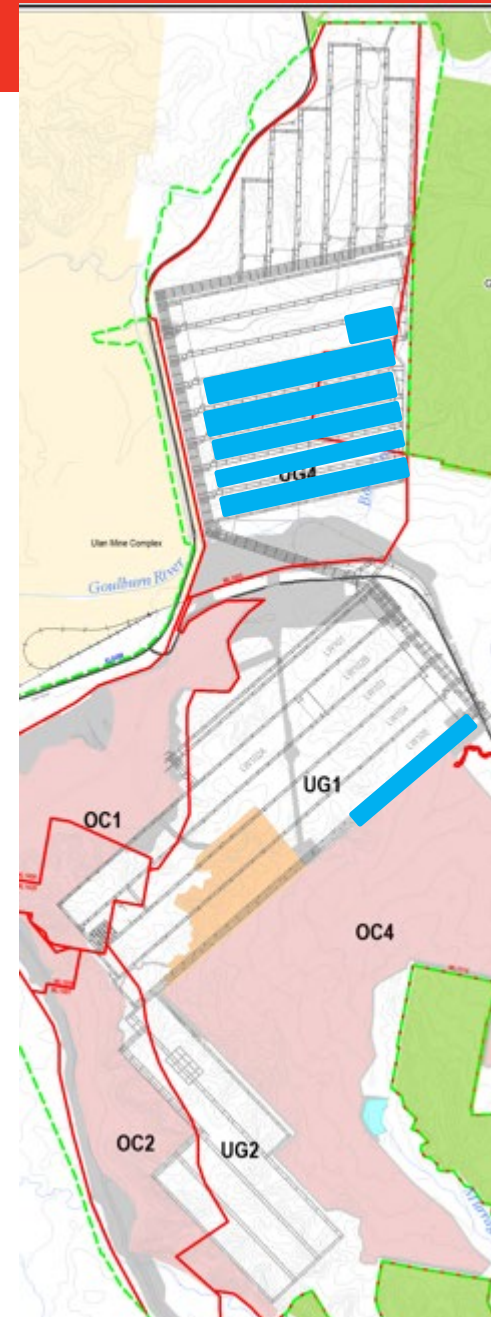
Operational Update - Opencut

- Open cut operations in;
 - OC1
 - OC2
 - OC3
 - OC4
- Water Treatment Plant operations continue.



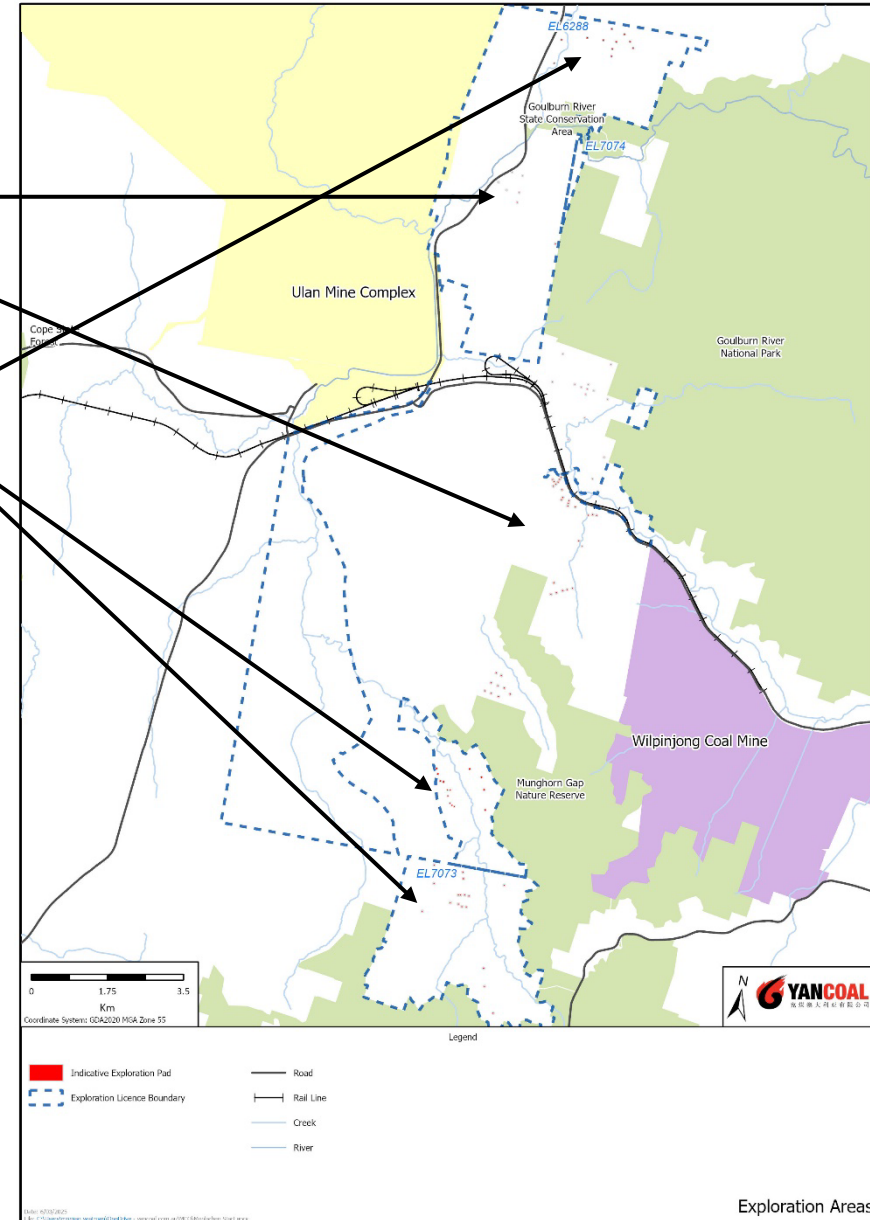
Operational Update - Underground

- Longwall operations in LW406.
- Continued underground development in UG4 and commencement towards UG2.
- UG4 LW401-409 Extraction Plan
 - Submitted UG4 LW401-409 Extraction Plan 17 Jan 2025
 - Independent Expert Advisory Panel for Mining completed site visit occurred 18 Feb
 - Extraction Plan with panel for review and advice to DPHI
- MCO has commenced preparation of Extraction Plan for UG2.



Exploration Update

- Drilling continues in ML1715 and ML1605
- Drilling continues in EL6288 and EL7073
- Rehabilitation and monitoring activities have continued during the period.







Environmental Monitoring








Monitoring network

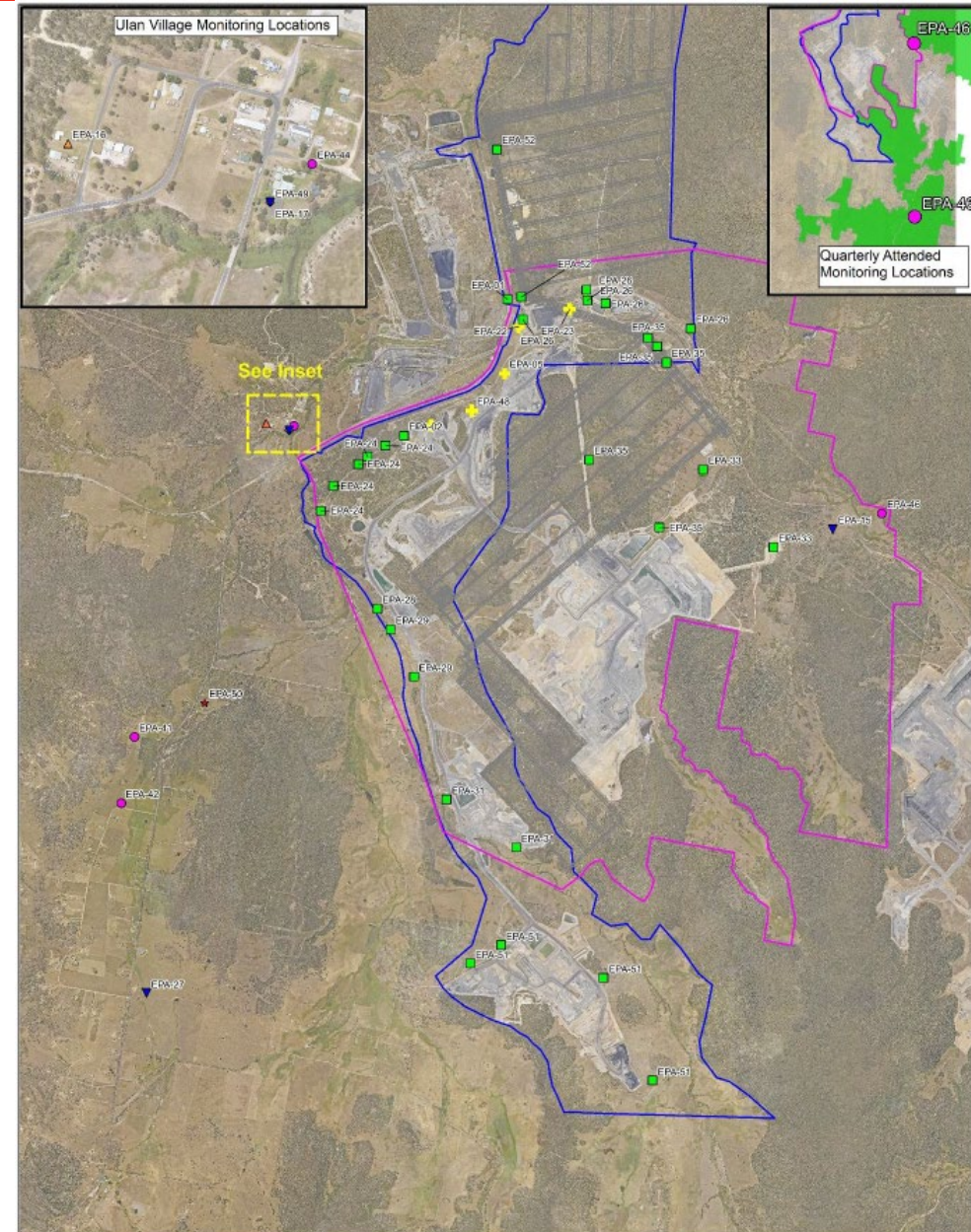
- Water;
- Air Quality;
- Blasting;
- Noise; and
- Meteorology.

Legend

	Stage 1 DA Boundary
	Stage 2 DA Boundary
	Approved Underground Workings
	Approved_Underground_Workings

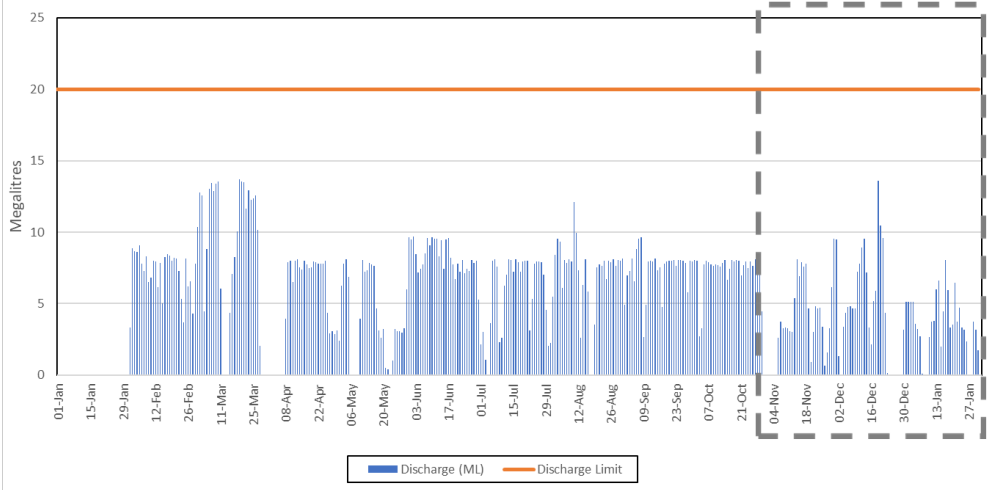
EPL Monitoring Locations

	Real-time TEOM
	Effluent Monitoring
	Water Discharge Point
	Attended Noise Monitor
	Blast Monitor
	Weather Station
	PM10 Monitor

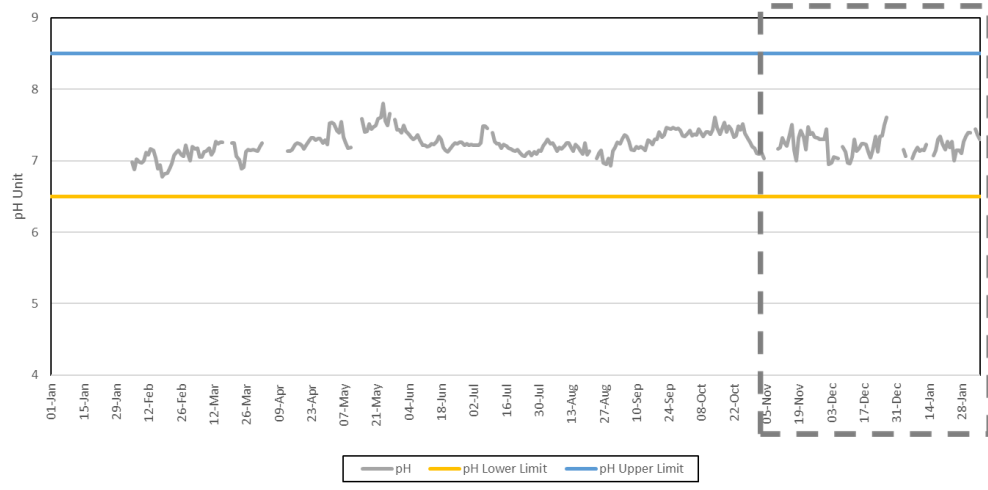


Water Release – EPA01

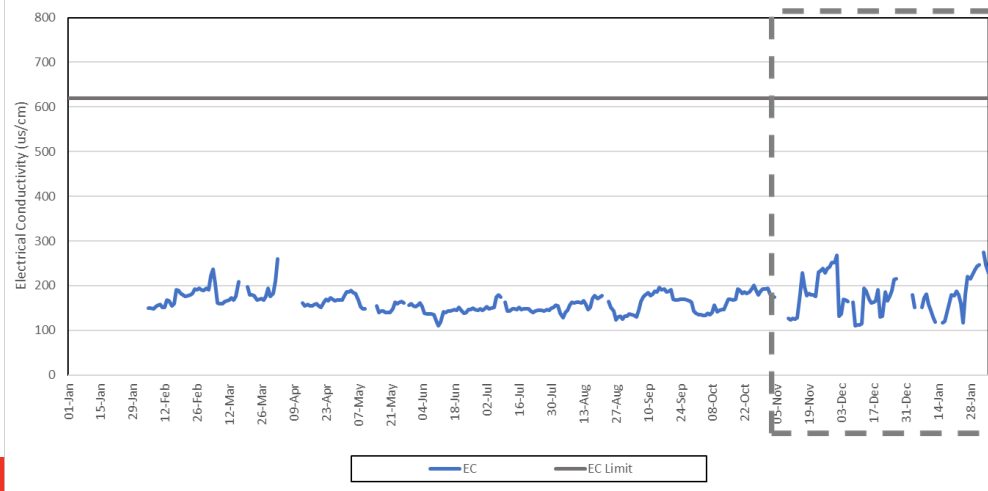
EPA 1 Daily Discharge Volumes
Jan 2024 - Jan 2025



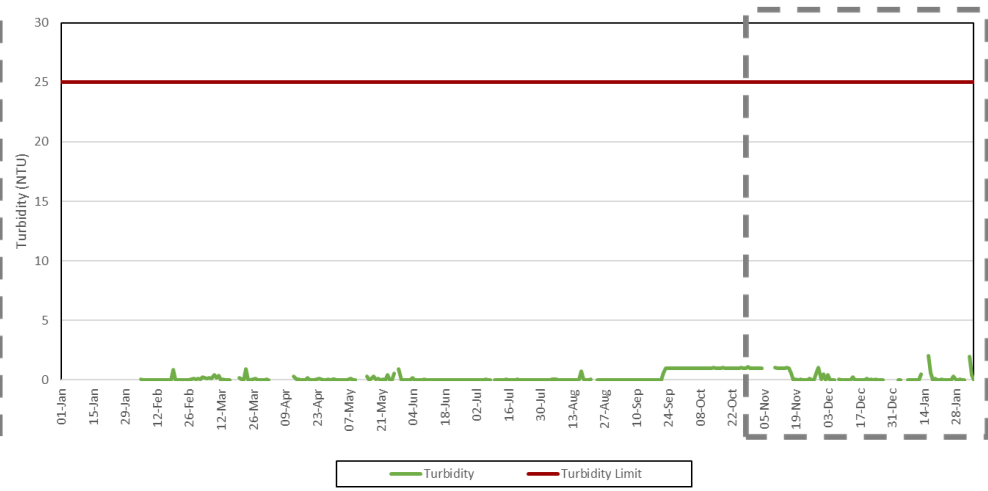
EPA 1 Daily Average pH
Jan 2024 - Jan 2025



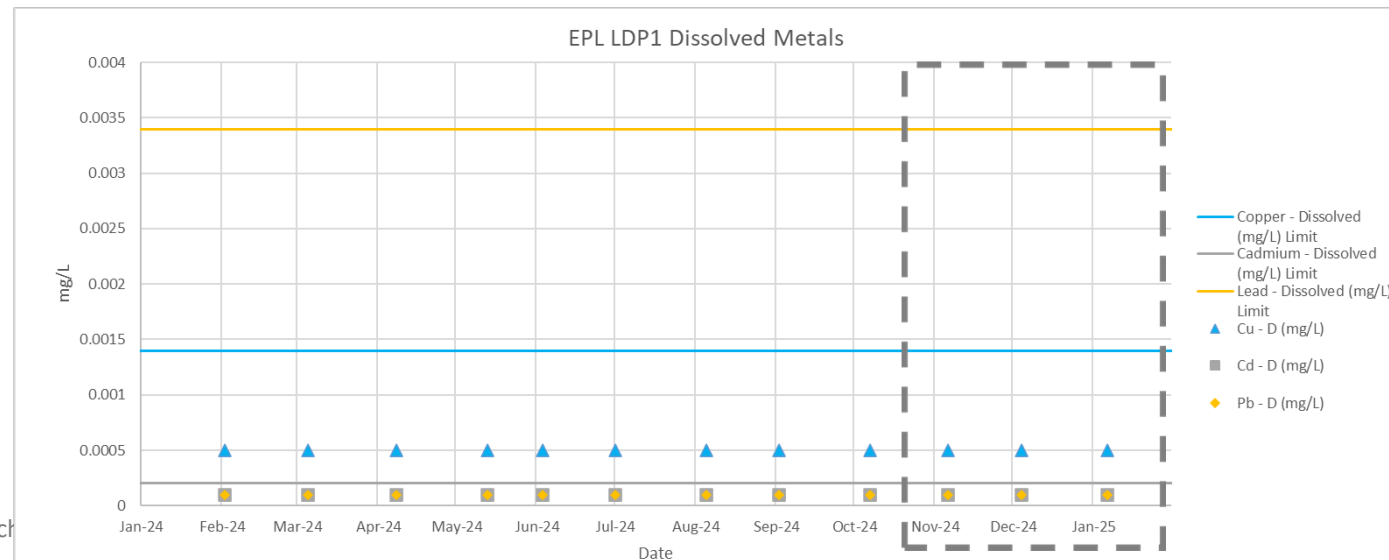
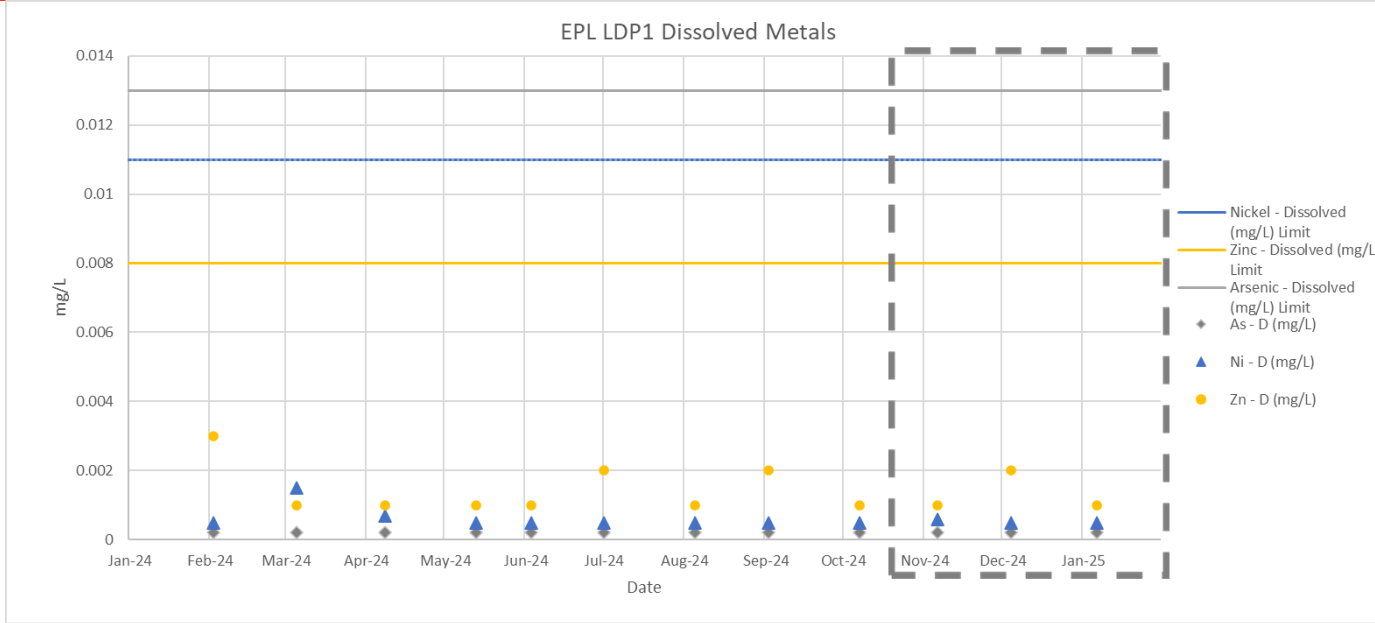
EPA 1 Daily Average EC
Jan 2024 - Jan 2025



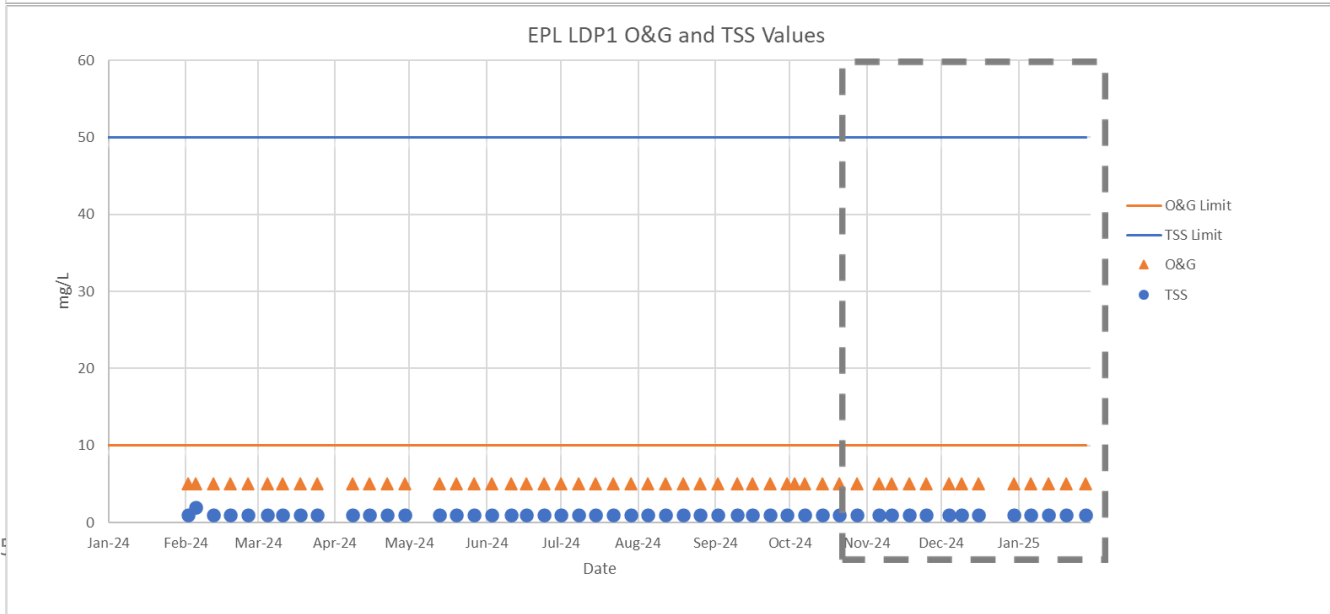
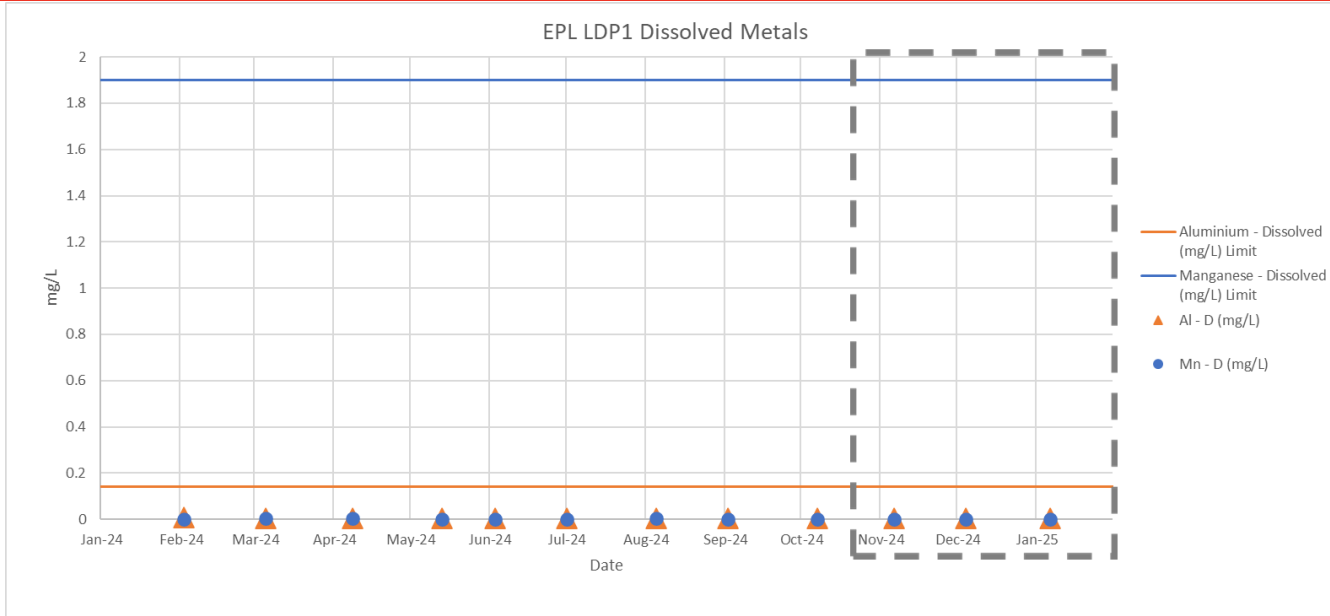
EPA 1 Daily Average Turbidity
Jan 2024 - Jan 2025



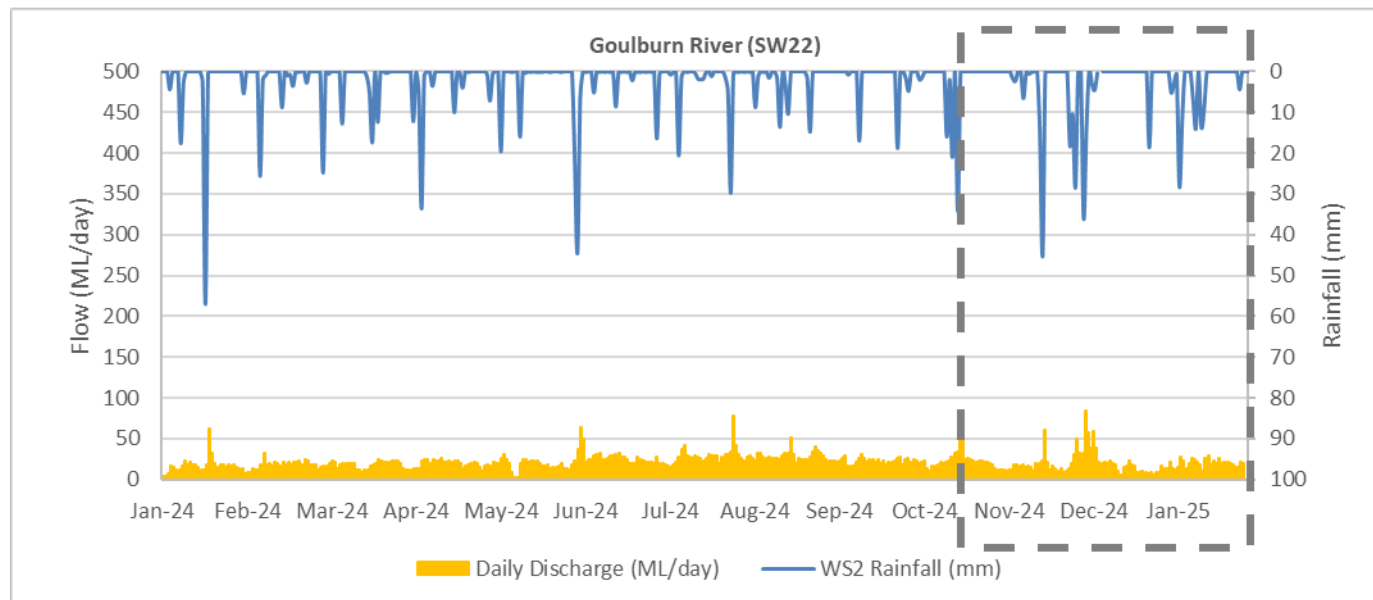
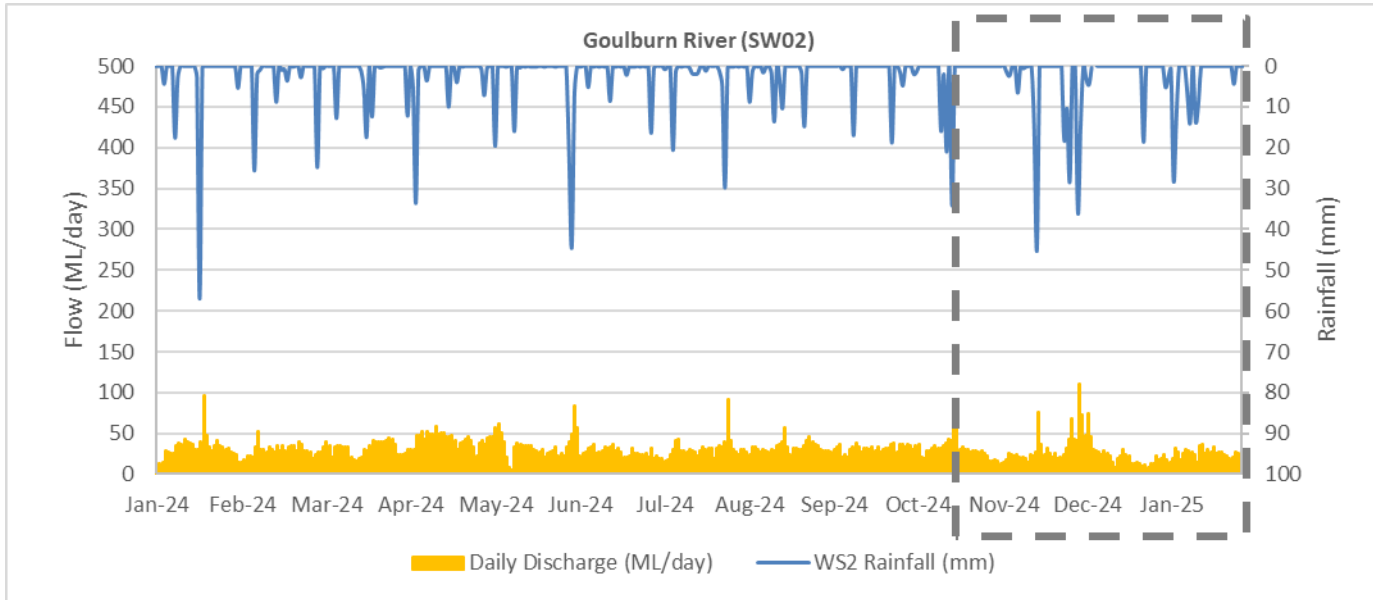
Water Release – EPA01



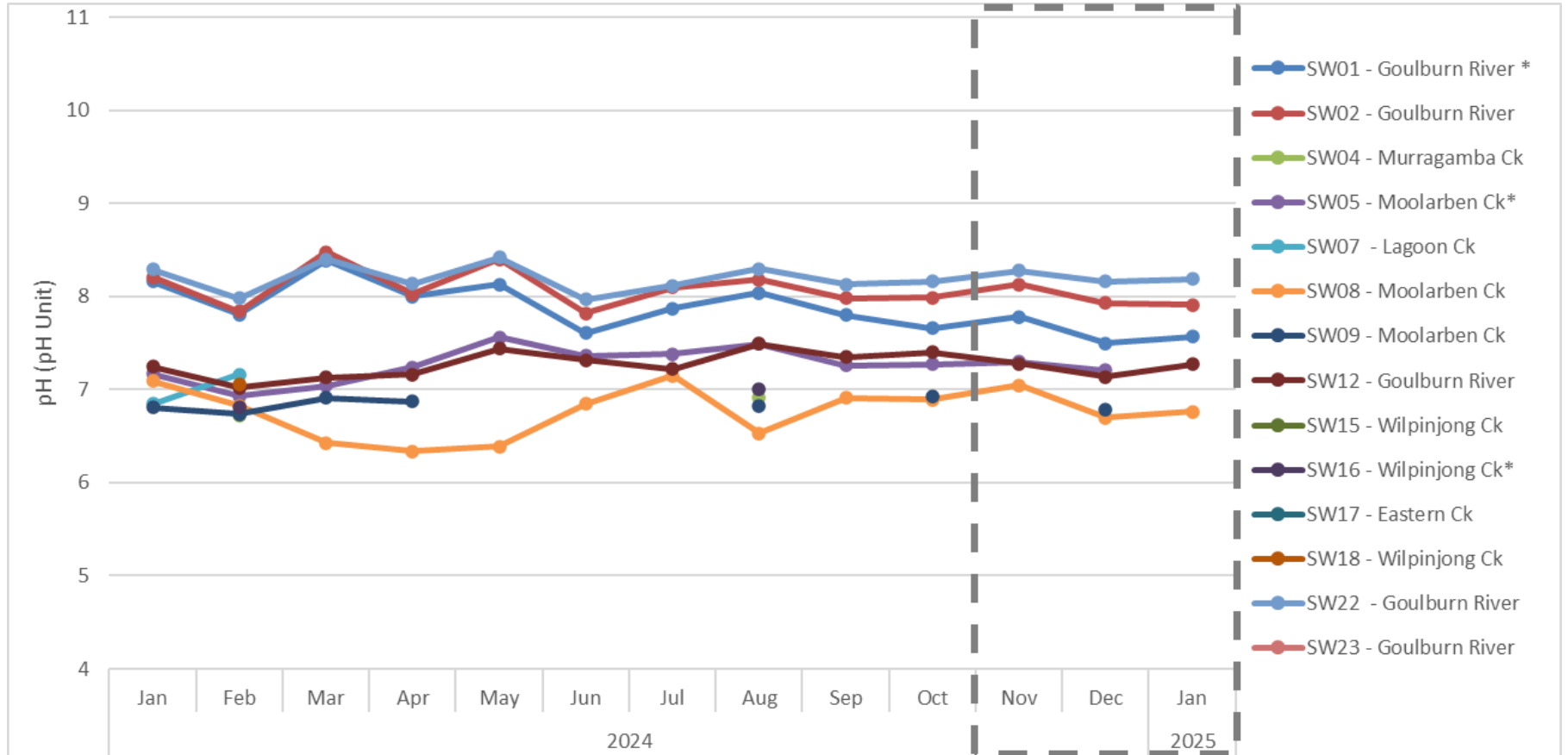
Water Release – EPA01



Stream Flow – Goulburn River

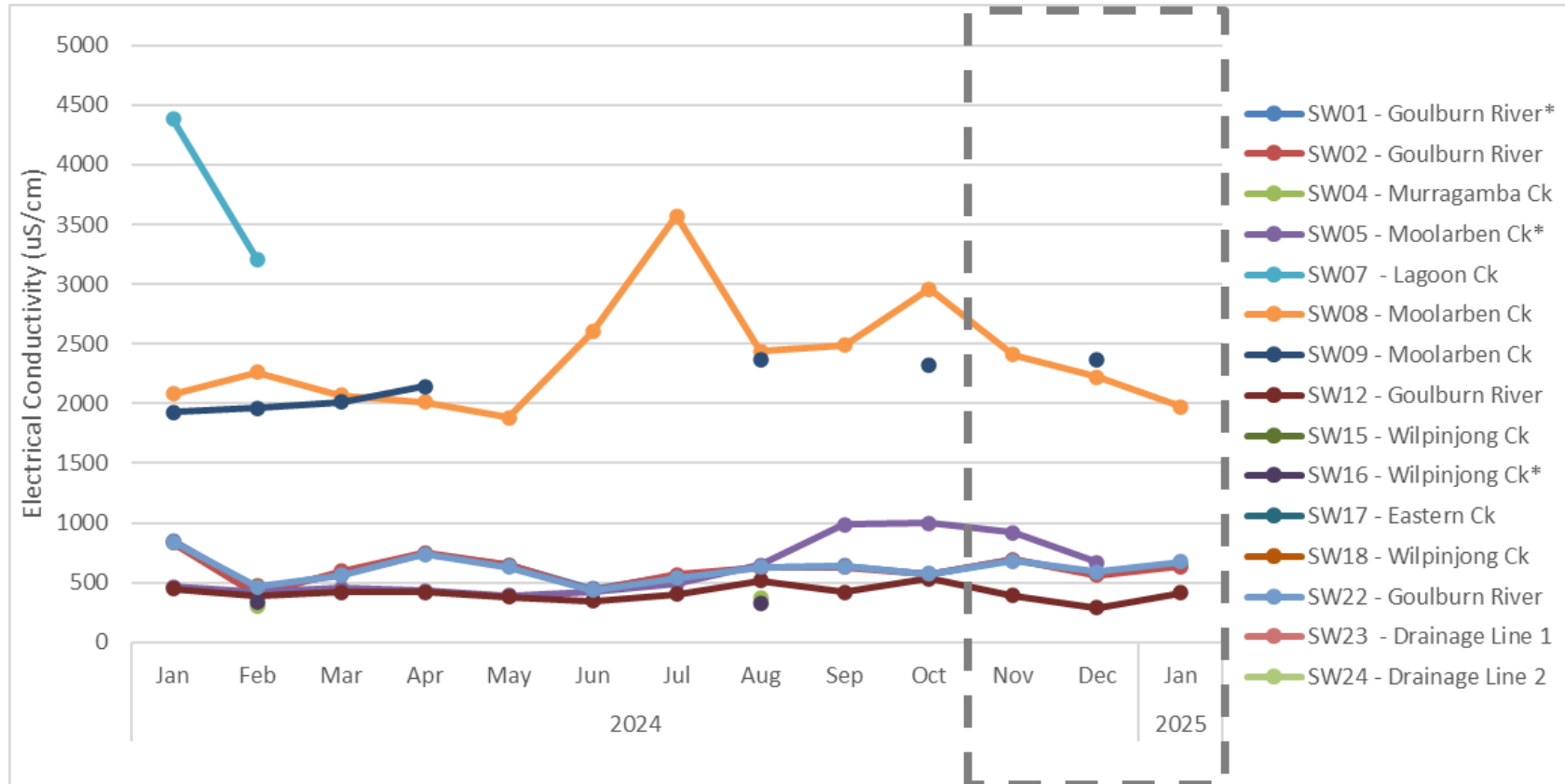


Water Quality - pH



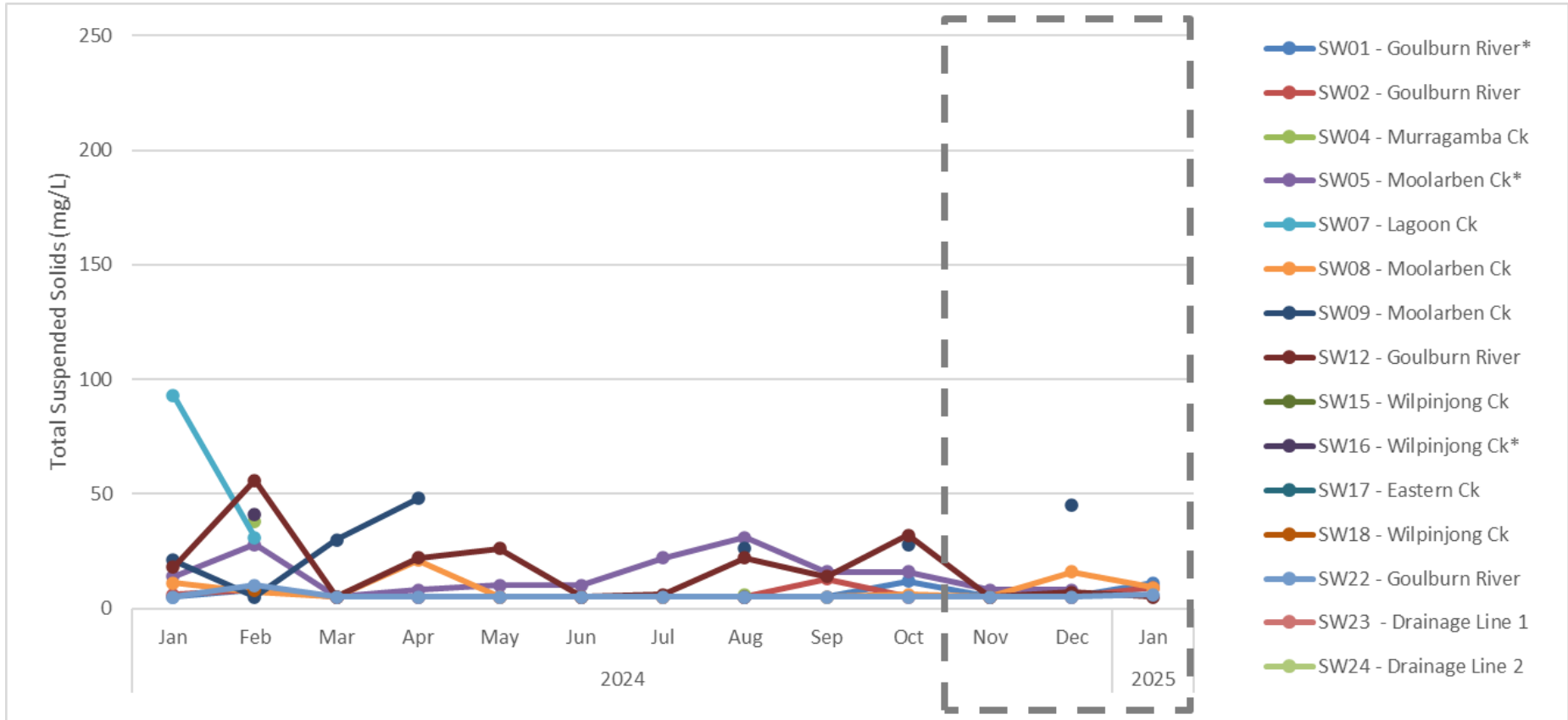
* Monitoring Locations with associated trigger investigation levels as per the Surface Water Management Plan

Water Quality - EC



* Monitoring Locations with associated trigger investigation levels as per the Surface Water Management Plan

Water Quality - TSS



* Monitoring Locations with associated trigger investigation levels as per the Surface Water Management Plan

Air Quality

Site	January 2024 PM10 Annual Average ($\mu\text{g}/\text{m}^3$)	January 2025 PM10 Annual Average ($\mu\text{g}/\text{m}^3$)	Air Quality PM10 Annual Average Criteria ($\mu\text{g}/\text{m}^3$)
TEOM 01	16.7	16.2	25.0
TEOM 04	14.5	13.7	25.0
TEOM 07	10.8	8.5	25.0

Site	January 2024 PM2.5 Annual Average ($\mu\text{g}/\text{m}^3$)	January 2025 PM2.5 Annual Average ($\mu\text{g}/\text{m}^3$)	Air Quality PM2.5 Annual Average Criteria ($\mu\text{g}/\text{m}^3$)
TEOM 07	5.1	3.5	8.0

Monthly monitoring reports are available on our website:

www.moolarbencoal.com.au/page/environment/environmental-monitoring/

Blasting

Site	Nov 2024 Blast Overpressure (dBL)		Dec 2024 Blast Overpressure (dBL)		Jan 2025 Blast Overpressure (dBL)		Limit (dBL)
	Min	Max	Min	Max	Min	Max	
BM1 Ulan School	83.6	107.9	83.6	103.2	86.4	106.8	115/120
BM5 Ridge Rd	83.9	106.2	91.2	106.1	88.2	102.8	115/120
BM8 Moolarben Rd	81.6	113.7	88.3	106.6	83.6	100.2	115/120

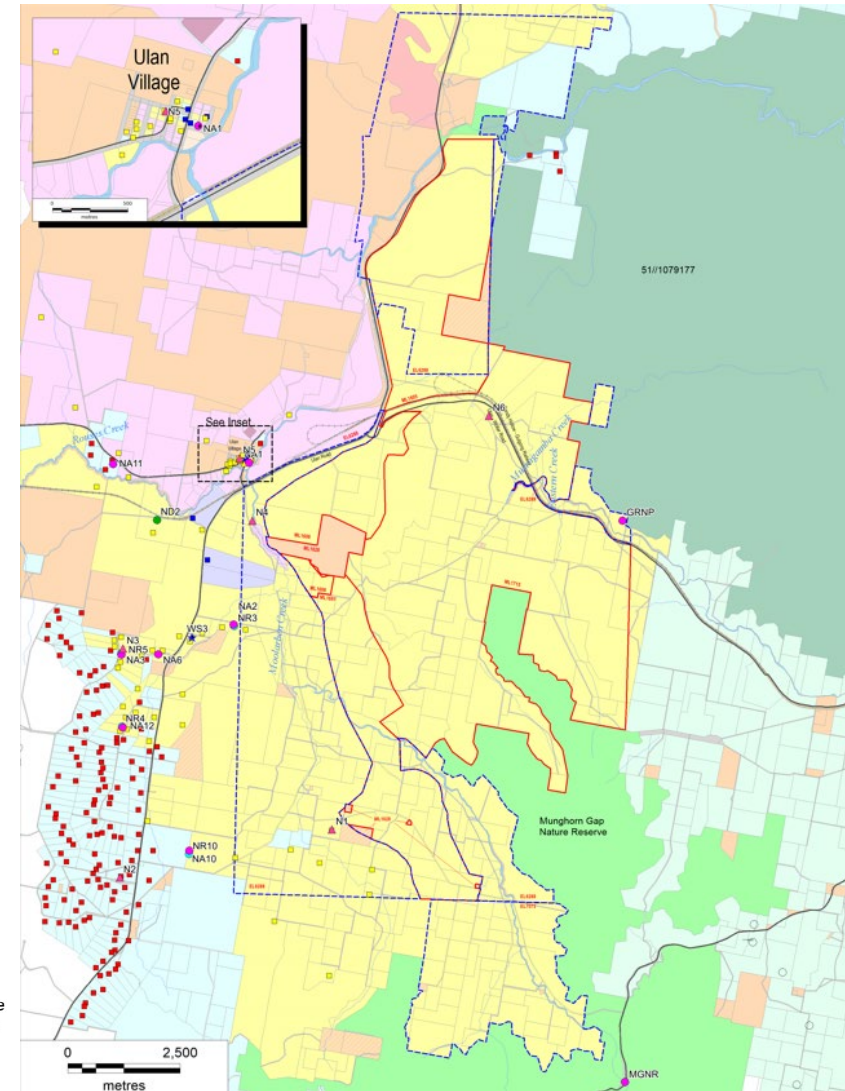
Site	Nov 2024 Ground Vibration (mm/s)		Dec 2024 Ground Vibration (mm/s)		Jan 2025 Ground Vibration (mm/s)		Limit (mm/s)
	Min	Max	Min	Max	Min	Max	
BM1 Ulan School	0.0	0.2	0.1	0.6	0.0	0.6	5/10
BM5 Ridge Rd	0.0	0.4	0.1	0.4	0.0	0.7	5/10
BM8 Moolarben Rd	0.0	0.3	0.1	0.3	0.0	0.4	5/10

Monthly monitoring reports are available on our website:

www.moolarbencoal.com.au/page/environment/environmental-monitoring/

Noise Monitoring

- All monthly & quarterly attended noise monitoring within criteria.
- Continued implementation of:
 - Planning controls - scheduling
 - Engineering controls - attenuation
 - Operational controls - bunds/screens
 - Real-time monitoring triggers
 - Real-time response protocols



LEGEND

- Exploration Licence Boundary
- Mining Lease Boundary
- Rail Line
- Watercourse

Ownership

- Yancoal
- Ulan Coal Mines Limited
- Wilpinjong Coal Mine
- Privately Owned
- Crown
- Commercial

- National Park
- Nature Reserve
- Mine Owned Receiver
- Private Receiver
- Commercial Receiver

Noise Monitoring Locations

- Real-time Noise Monitoring Site
- Attended Noise Monitoring Site
- Directional Receiver
- Background Noise Monitoring
- Weather Station

Community Complaints

MCO Complaints

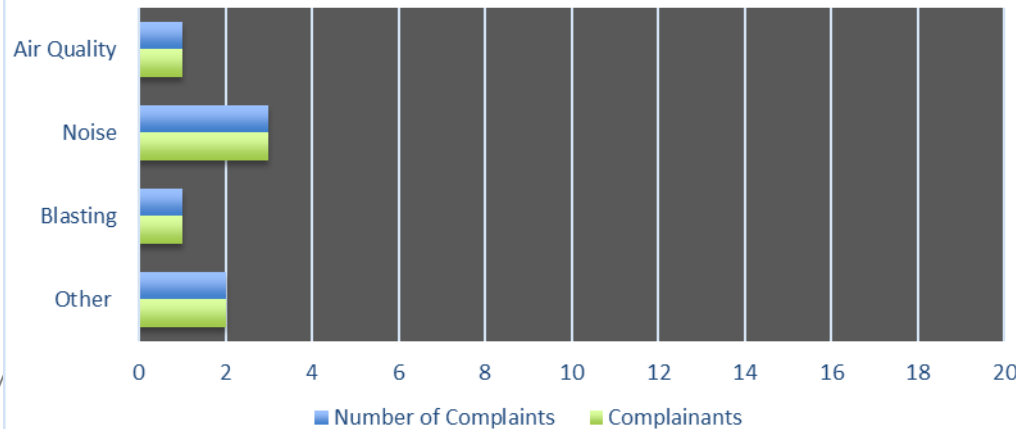
Nov 2024 - Jan 2025



- All complaints investigated
- No non-compliances identified
- No Complaints 2025 YTD

MCO Complaints

2024 Year



Rehabilitation Update

- Summary of rehabilitation undertaken during 2024:
 - Landform shaping – 43.8ha
 - Ecosystem establishment (seeding) – 47.1ha
- Landform shaping and drainage works continuing in OC2, OC3 and OC4.
- Rehabilitation maintenance works are continuing, primarily weed management in OC2 and OC4 areas

Rehabilitation Update – OC3 seeded area



19ha of OC3 Rehabilitation seeded during early January 2025

Rehabilitation update – OC4 landform shaping



*45ha of rehabilitation landform shaping in OC4 – adjacent to 2024 seeding area.
Note the rehabilitated landform blending into the surrounding topography.*

Biodiversity Offset Areas Update

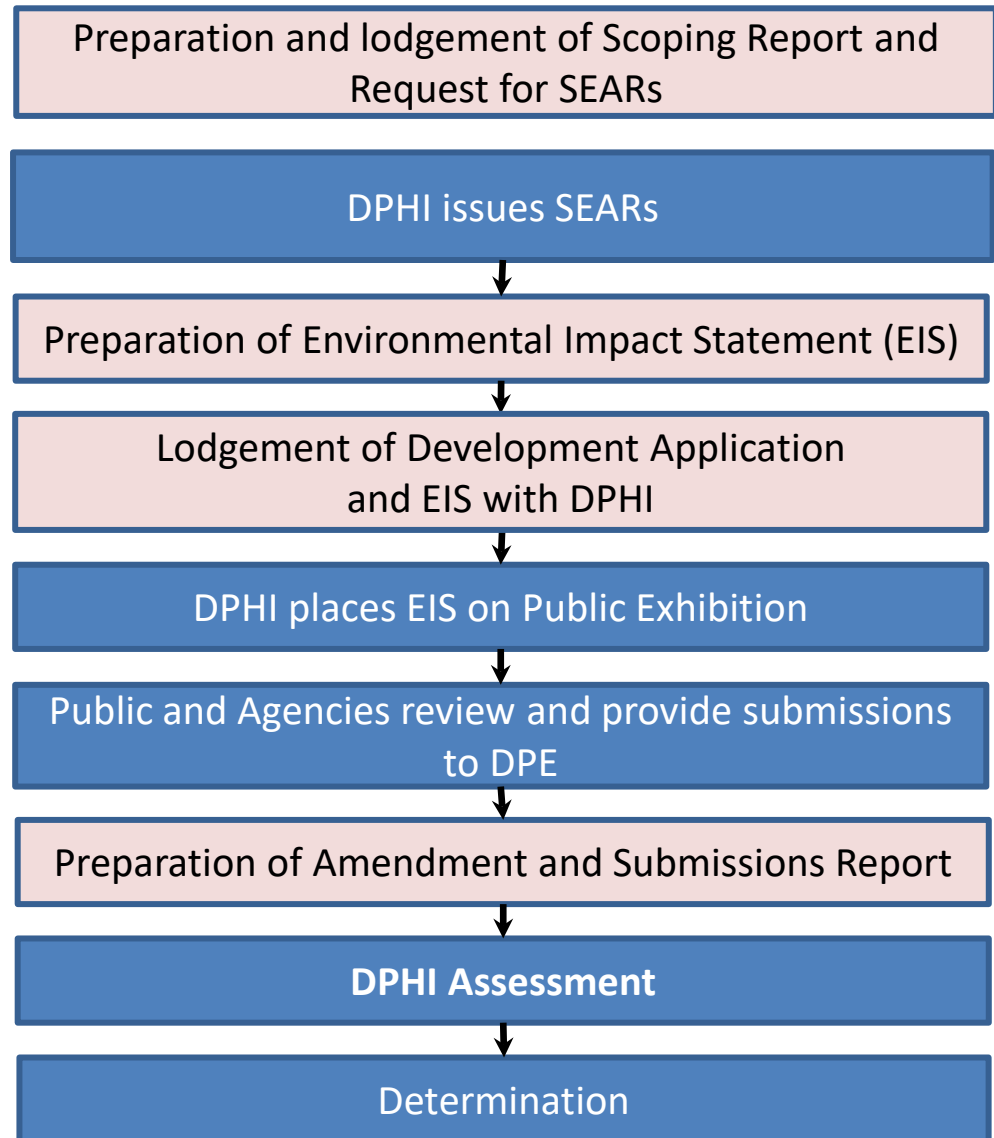
- Maintenance works ongoing including track and erosion repairs, vertebrate pest control and weed management
- Tree planting program planning for April ~ 35,000 trees for Bobadeen, Moolarmoo and Onsite Offset areas



OC3 Extension – Amended Project

- MCO has lodged a consolidated response to all advice received from Agencies and the Independent Expert Advisory Panel for Mining (IEAPM) in November 2024.
 - Further clarity to be provided for BCS/Panel
- DPHI now completing assessment of Amended Project with input from Agencies and IEAPM.

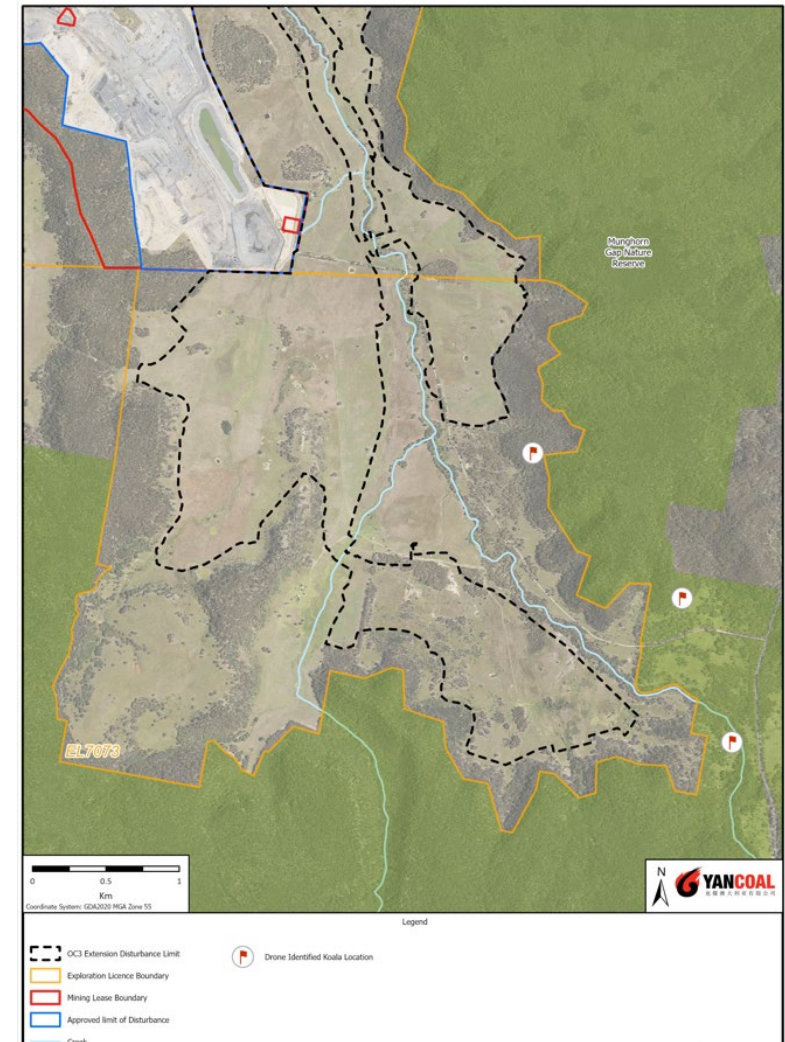
Current Status →



OC3 Extension – Amended Project

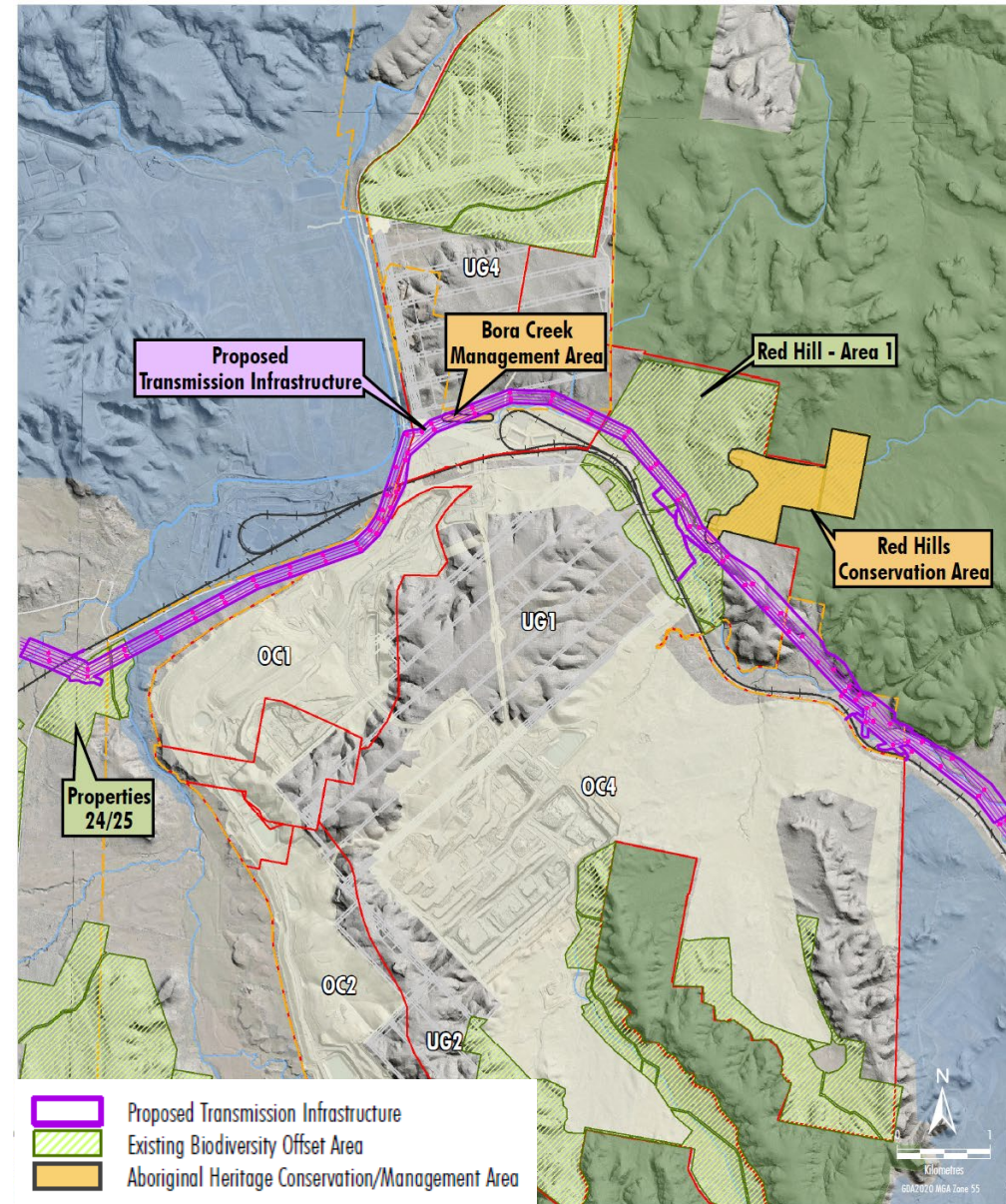
Koalas

- Recent media around recording of Koala's within the proposed OC3 extension area footprint
- Mapping demonstrates
 - Recordings of koalas are within or in very close proximity to the MGNR
 - Not within the disturbance limit of the project
 - The disturbance boundary avoids majority of mature vegetation areas



NSW EnergyCo Transmission Project

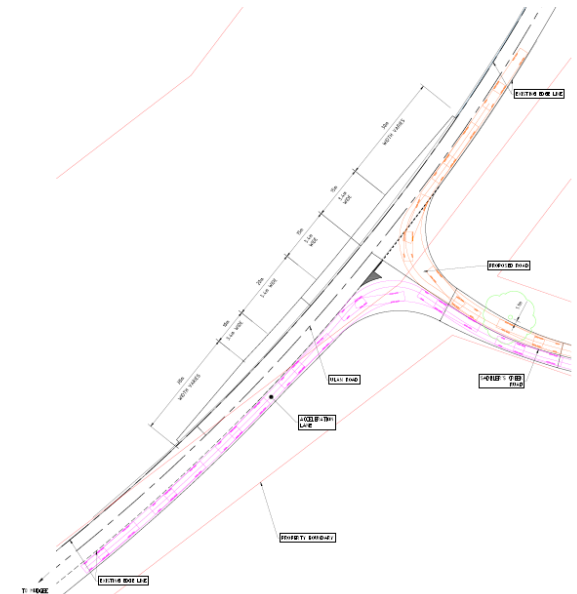
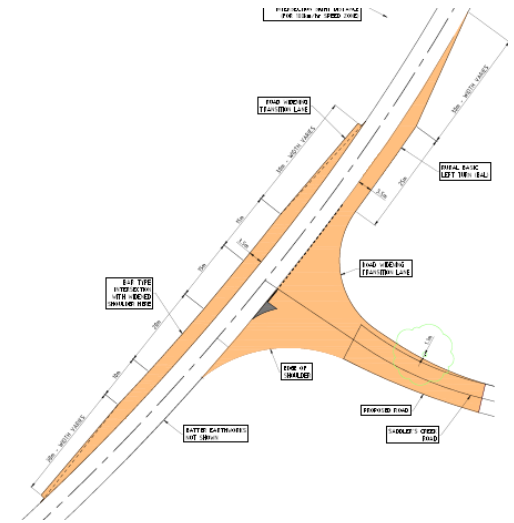
- MCO continue to cooperate with EnergyCo on transmission line corridor
- Indicated timing for works;
 - Intersection upgrades May 2025
 - Easement clearing Aug
 - Footings construction Sept



Saddlers Creek Rd intersection

Upgrade of Saddlers Creek Road – Ulan Road Intersection

- Condition 55A, Schedule 3 of PA 05_0117 requires:
 - Prior to the commencement of construction works associated with the northern dewatering sites (described in MOD 15), the Proponent must upgrade the intersection of Ulan Road and Saddlers Creek Road to the satisfaction of the appropriate roads authority and in consultation with DPIE Crown Lands. The intersection upgrade is to be designed and constructed in accordance with the Guide to Road Design (Austroads) and any relevant TfNSW supplements.*
- Construction of the northern dewatering bores currently scheduled for 2025.
- MCO has submitted concept designs to MWRC – report recommends a
 - BAR – R turn treatment into Saddlers Creek Rd
 - BAL – L turn treatment out of Saddlers Creek Rd
 - Yet to be approved by MWRC



Employment Update

Current Traineeships

- 35 Trainees currently onsite
 - 7 Underground Trainees
 - 28 Open Cut Trainees

Apprentices

- 32 Apprentices currently onsite
 - 8 Underground Apprentices
 - 16 Open Cut Apprentices
 - 8 Coal Handling and Preparation Plant (CHPP) Apprentices



