



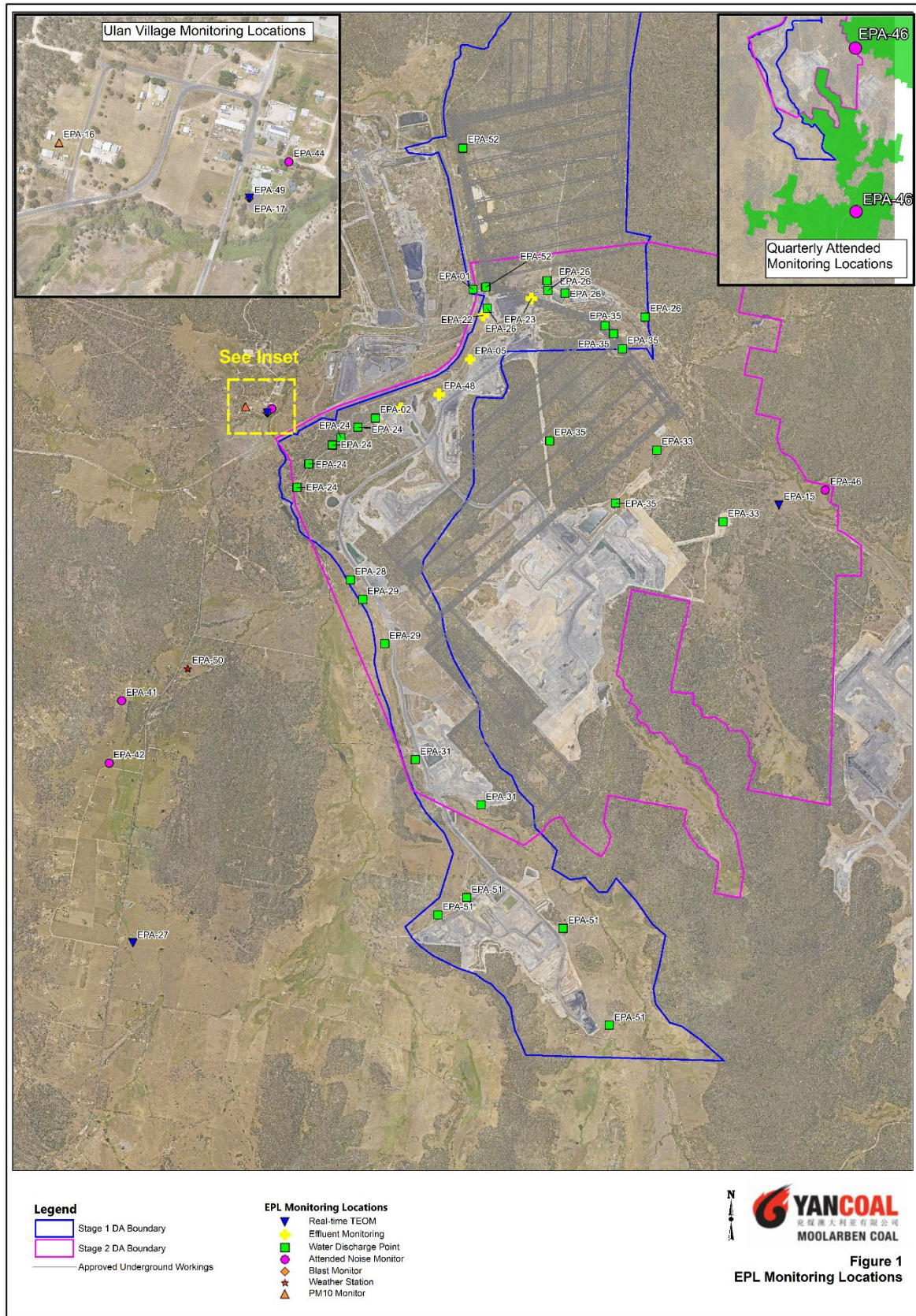
# Monthly Environmental Monitoring Report

For the Month Ending 31 January 2025

<b>Name of Operation</b>	Moolarben Coal Complex
<b>Name of License Holder</b>	Moolarben Coal Operations Pty Ltd
<b>Premises</b>	Moolarben Coal Mine 12 Ulan-Wollar Rd, Ulan NSW 2850
<b>Environmental Protection Licence Number</b>	12932
<b>EPL Link</b>	<a href="https://apps.epa.nsw.gov.au/prpoeoapp/ViewPOEOLicence.aspx?DOCID=270376&amp;SYSUID=1&amp;LICID=12932">https://apps.epa.nsw.gov.au/prpoeoapp/ViewPOEOLicence.aspx?DOCID=270376&amp;SYSUID=1&amp;LICID=12932</a>
<b>Reporting Period</b>	01 January 2025 to 31 January 2025
<b>Date last sampled data obtained</b>	20 February 2025
<b>Publication Date</b>	6 March 2025
<b>Version</b>	1
<b>Author</b>	M.Yeatman
<b>Approver</b>	R.Shanks



### EPL 12932 MCO Environmental Monitoring Network



## Concentration Monitoring Summary

### Air Quality Monitoring

EPL ID	Location	Pollutant	Unit of Measure	EPL Monitoring Frequency	No. of Samples collected and analysed annually	12 Month Rolling Average			Annual concentration limit	Exceedance (Yes/No)
						Min Value	Mean Value	Max Value		
16	PM01	PM10	µg/m <sup>3</sup>	Every 6 days	5*	12.1	12.2	12.4	25	No
N/A	PM02	PM10	µg/m <sup>3</sup>	N/A	5	12.4	12.7	12.8	25	No
15	TEOM 6	PM10	µg/m <sup>3</sup>	Continuous	100%	18.9	19.0	19.1	N/A	N/A
17	TEOM 1	PM10	µg/m <sup>3</sup>	Continuous	100%	16.1	16.2	16.3	25	No
27	TEOM 7	PM10	µg/m <sup>3</sup>	Continuous	77.4%	8.3	8.5	8.6	25	No
27	TEOM 7	PM2.5	µg/m <sup>3</sup>	Continuous	77.4%	3.4	3.5	3.5	8	No
N/A	TEOM 4	PM10	µg/m <sup>3</sup>	N/A	96.8%	13.6	13.7	13.9	25	No

EPL ID	Location	Pollutant	Unit of Measure	EPL Monitoring Frequency	No. of Samples collected and analysed	Min Value	Mean Value	Max Value	24 hr concentration limit	Exceedance (Yes/No)
16	PM01	PM10	µg/m <sup>3</sup>	Every 6 days	5*	8.3	10.8	16.2	50	No
N/A	PM02	PM10	µg/m <sup>3</sup>	N/A	5	8.3	14.9	20.4	50	No
15	TEOM 6	PM10	µg/m <sup>3</sup>	Continuous (24 Hr Average)	100%	4.8	17.1	44.2	N/A	N/A
17	TEOM 1	PM10	µg/m <sup>3</sup>	Continuous (24 Hr Average)	100%	5.4	18.8	38.9	50	No
27	TEOM 7	PM10	µg/m <sup>3</sup>	Continuous (24 Hr Average)	77.4%	3.1	10.4	19.2	50	No
27	TEOM 7	PM2.5	µg/m <sup>3</sup>	Continuous (24 Hr Average)	77.4%	1.8	5.5	10.4	25	No
N/A	TEOM 4	PM10	µg/m <sup>3</sup>	N/A (24 Hr Average)	96.8%	4.4	16.9	29.4	50	No

\* Missed 6-day HVAS sample on the 6/01/2025 reported to EPA 9/01/2025; a supplementary sample was collected on the 13/01/2025.



### Surface Water Quality Monitoring

EPL ID	Location	Pollutant	Unit of Measure	No. of Samples collected and analysed	Date Sampled	Results
N/A	SW01	Conductivity	µS/cm	1	15/01/2025	645
		pH	pH	1	15/01/2025	7.6
		Total Suspended Solids	mg/L	1	15/01/2025	11
N/A	SW02	Conductivity	µS/cm	1	15/01/2025	634
		pH	pH	1	15/01/2025	7.6
		Total Suspended Solids	mg/L	1	15/01/2025	9
N/A	SW04	Conductivity	µS/cm	0	15/01/2025	*
		pH	pH	0	15/01/2025	*
		Total Suspended Solids	mg/L	0	15/01/2025	*
N/A	SW05	Conductivity	µS/cm	0	15/01/2025	*
		pH	pH	0	15/01/2025	*
		Total Suspended Solids	mg/L	0	15/01/2025	*
N/A	SW07	Conductivity	µS/cm	0	15/01/2025	*
		pH	pH	0	15/01/2025	*
		Total Suspended Solids	mg/L	0	15/01/2025	*
N/A	SW08	Conductivity	µS/cm	1	15/01/2025	1970
		pH	pH	1	15/01/2025	6.9
		Total Suspended Solids	mg/L	1	15/01/2025	9
N/A	SW09	Conductivity	µS/cm	0	15/01/2025	*
		pH	pH	0	15/01/2025	*
		Total Suspended Solids	mg/L	0	15/01/2025	*
N/A	SW12	Conductivity	µS/cm	1	15/01/2025	413
		pH	pH	1	15/01/2025	7.3
		Total Suspended Solids	mg/L	1	15/01/2025	<5
N/A	SW15	Conductivity	µS/cm	0	15/01/2025	*
		pH	pH	0	15/01/2025	*
		Total Suspended Solids	mg/L	0	15/01/2025	*
N/A	SW16	Conductivity	µS/cm	0	15/01/2025	*
		pH	pH	0	15/01/2025	*
		Total Suspended Solids	mg/L	0	15/01/2025	*

**MONTHLY ENVIRONMENTAL MONITORING REPORT**

For the Month Ending 31 January 2025

EPL ID	Location	Pollutant	Unit of Measure	No. of Samples collected and analysed	Date Sampled	Results
N/A	SW17	Conductivity	µS/cm	0	15/01/2025	*
		pH	pH	0	15/01/2025	*
		Total Suspended Solids	mg/L	0	15/01/2025	*
N/A	SW18	Conductivity	µS/cm	0	15/01/2025	*
		pH	pH	0	15/01/2025	*
		Total Suspended Solids	mg/L	0	15/01/2025	*
N/A	SW22	Conductivity	µS/cm	1	15/01/2025	678
		pH	pH	1	15/01/2025	7.6
		Total Suspended Solids	mg/L	1	15/01/2025	6
N/A	SW23	Conductivity	µS/cm	0	15/01/2025	*
		pH	pH	0	15/01/2025	*
		Total Suspended Solids	mg/L	0	15/01/2025	*
N/A	SW24	Conductivity	µS/cm	0	15/01/2025	*
		pH	pH	0	15/01/2025	*
		Total Suspended Solids	mg/L	0	15/01/2025	*

\* No flow

**MONTHLY ENVIRONMENTAL MONITORING REPORT**

For the Month Ending 31 January 2025

**Blasting**

	Location	Pollutant	Unit of Measure	Frequency	No. of Blasts during the reporting period	Results			Limits dBL	Exceedance (Yes/No)
						Min Value	Mean Value	Max Value		
49	BM1 Ulan School	Blast Overpressure	dBL	Every Blast	15	86.4	93.6	106.8	115 (95% of Blasts) 120 (100% of Blasts)	No
		Ground Vibration	mm/s	Every Blast		0.0	0.2	0.6	5mm/s (95% of Blasts) 10mm/s (100% of Blasts)	No
N/A	BM5 Ridge Rd	Blast Overpressure	dBL	Every Blast	15	88.2	94.9	102.8	115 (95% of Blasts) 120 (100% of Blasts)	No
		Ground Vibration	mm/s	Every Blast		0.0	0.2	0.7	5mm/s (95% of Blasts) 10mm/s (100% of Blasts)	No
N/A	BM8 Moolarben Rd	Blast Overpressure	dBL	Every Blast	15	83.6	92.3	100.2	115 (95% of Blasts) 120 (100% of Blasts)	No
		Ground Vibration	mm/s	Every Blast		0.0	0.1	0.4	5mm/s (95% of Blasts) 10mm/s (100% of Blasts)	No

**MONTHLY ENVIRONMENTAL MONITORING REPORT**

For the Month Ending 31 January 2025

**Noise**

EPL ID	Location	Site ID	Monitoring Type	Frequency	Measured Level <sup>1,2,3</sup> LAeq dB (15min)	Measured Level <sup>1,2,3</sup> LA1,1dB (1min)	Noise Criteria <sup>4</sup>	Monitoring Completed during the period	Exceedance (Yes/No) <sup>5</sup>
44	Ulan Public School	NA1	Compliance - Attended	Monthly	IA	-	Daytime (07:00 – 18:00) LAeq, 15minute: 35 dB	Yes	NA
N/A	Cope Road (Receiver 258)	NA11	Management - Attended	Quarterly	-	-	-	-	-
N/A	Lagoons Road	NA2	Validation - Attended	Annually	-	-	-	-	-
42	Winchester Crescent	NA12	Compliance/Validation - Attended	Monthly	IA	IA	Night time (22:00 – 07:00) LAeq,15minute: 35 dB LA1,1minute: 45 dB	Yes	No
N/A	Upper Ridge Road (Receiver 176)	NA3	Validation - Attended	Annually	-	-	-	-	-
41	Lower Ridge Road	NA6	Compliance -Attended	Monthly	<20	<25	Night time (22:00 – 07:00) LAeq,15minute: 37 dB LA1, 1minute: 45 dB	Yes	No
N/A	Moolarben Road (Receiver 28)	NA10	Validation - Attended	Annually	-	-	-	-	-
46	Goulburn River National Park	GRNP	Compliance -Attended	Annually	-	-	All periods LAeq, 15minute: 50 dB	-	-
46	Munghorn Gap Nature Reserve	MGNR	Compliance -Attended	Annually	-	-	All periods LAeq, 15minute: 50 dB	-	-

1. NA indicates meteorological conditions during the measurement did not correspond with any modelled meteorological conditions and were not applicable for comparison.
2. IA is Inaudible. When site only noise is noted as IA, there was no noise from the source of interest audible at the monitoring location.
3. Site-only noise levels attributed to MCO, including modifying factors where applicable.
4. As detailed in the EPL, noise emission limits apply under all meteorological conditions except:
  - Wind speeds greater than 3 m/s at 10 metres above ground level; or
  - Stability class F temperature inversion conditions, and wind speeds greater than 2 m/s at 10 metres above ground level; or
  - Stability class G temperature inversions.
5. NA in last column means atmospheric conditions outside those specified in EPL, therefore criterion was not applicable.



**MONTHLY ENVIRONMENTAL MONITORING REPORT**

For the Month Ending 31 January 2025

**Effluent Discharge Points**

EPL ID	Pollutant	Unit of Measure	No. of samples required by Licence	No. of Samples collected and analysed	Date Sampled	Result
5	BOD	mg/L	Quarterly		*	
	Nitrogen (total)	mg/L	Quarterly		*	
	Oil and Grease	mg/L	Quarterly		*	
	pH	pH	Quarterly		*	
	Phosphorus (total)	mg/L	Quarterly		*	
	Total Suspended Solids	mg/L	Quarterly		*	
22	BOD	mg/L	Quarterly		*	
	Nitrogen (total)	mg/L	Quarterly		*	
	Oil and Grease	mg/L	Quarterly		*	
	pH	pH	Quarterly		*	
	Phosphorus (total)	mg/L	Quarterly		*	
	Total Suspended Solids	mg/L	Quarterly		*	
23	BOD	mg/L	Quarterly		*	
	Nitrogen (total)	mg/L	Quarterly		*	
	Oil and Grease	mg/L	Quarterly		*	
	pH	pH	Quarterly		*	
	Phosphorus (total)	mg/L	Quarterly		*	
	Total Suspended Solids	mg/L	Quarterly		*	
48	BOD	mg/L	Quarterly		*	
	Nitrogen (total)	mg/L	Quarterly		*	
	Oil and Grease	mg/L	Quarterly		*	
	pH	pH	Quarterly		*	
	Phosphorus (total)	mg/L	Quarterly		*	
	Total Suspended Solids	mg/L	Quarterly		*	

\* Not sampled in January 2025, next sampled in February 2025

**MONTHLY ENVIRONMENTAL MONITORING REPORT**

For the Month Ending 31 January 2025

**Discharge Points**

EPL ID	Pollutant	Unit of Measure	No. of samples required by Licence	No. of Samples collected and analysed	Min Value	Mean Value	Max Value	100%ile concentration limit	Exceedance (Yes/No)
1	Conductivity	µS/cm	Continuous during discharge	Continuous during discharge	76.0	181.3	291.0	619	No
	Oil and Grease	mg/L	Weekly during discharge	4	<5	<5	<5	10	No
	pH	pH	Continuous during discharge	Continuous during discharge	6.9	7.2	7.6	6.5-8.5	No
	Total Suspended Solids	mg/L	Weekly during discharge	4	<1	<1	<1	50	No
	Turbidity	NTU	Continuous during discharge	Continuous during discharge	0.0	0.2	15.0	25	No
	Discharge Volume	Megalitres per day	Continuous during discharge	Continuous during discharge	0.0	3.5	8.1	20 <sup>1</sup>	No
2	Conductivity	µS/cm	Continuous during discharge	No licensed discharges during the period				619	NA
	Oil and Grease	mg/L	Daily during discharge					10	NA
	pH	pH	Continuous during discharge					6.5-8.5	NA
	Total Suspended Solids	mg/L	Daily during discharge					50	NA
	Turbidity	NTU	Continuous during discharge					25	NA
	Discharge Volume	Megalitres per day	Continuous during discharge					NA	NA
24	pH	pH	Daily during discharge	No licensed discharges during the period				6.5-8.5	NA
	Total Suspended Solids	mg/L	Daily during discharge					50	NA
	Turbidity	NTU	Daily during discharge					25	NA
26	pH	pH	Daily during discharge	No licensed discharges during the period				6.5-8.5	NA
	Total Suspended Solids	mg/L	Daily during discharge					50	NA
	Turbidity	NTU	Daily during discharge					25	NA
28	Conductivity	µS/cm	Continuous during discharge	No licensed discharges during the period				619	NA
	Oil and Grease	mg/L	Daily during discharge					10	NA
	pH	pH	Continuous during discharge					6.5-8.5	NA
	Total Suspended Solids	mg/L	Daily during discharge					50	NA
	Turbidity	NTU	Continuous during discharge					25	NA

**MONTHLY ENVIRONMENTAL MONITORING REPORT**

For the Month Ending 31 January 2025

EPL ID	Pollutant	Unit of Measure	No. of samples required by Licence	No. of Samples collected and analysed	Min Value	Mean Value	Max Value	100%ile concentration limit	Exceedance (Yes/No)
	Discharge Volume	Kilolitres per day	Continuous during discharge					NA	NA
29	pH	pH	Daily during discharge	No licensed discharges during the period				6.5-8.5	NA
	Total Suspended Solids	mg/L	Daily during discharge					50	NA
	Turbidity	NTU	Daily during discharge					25	NA
31	pH	pH	Daily during discharge	No licensed discharges during the period				6.5-8.5	NA
	Total Suspended Solids	mg/L	Daily during discharge					50	NA
	Turbidity	NTU	Daily during discharge					25	NA
35	pH	pH	Daily during discharge	No licensed discharges during the period				6.5-8.5	NA
	Total Suspended Solids	mg/L	Daily during discharge					50	NA
	Turbidity	NTU	Daily during discharge					25	NA
51	pH	pH	Daily during discharge	No licensed discharges during the period				6.5-8.5	NA
	Total Suspended Solids	mg/L	Daily during discharge					50	NA
	Turbidity	NTU	Daily during discharge					25	NA

1 Only applies when mining operations at the premises include that undertaken in the areas "UG4".