

# Stratford Coal CCC Meeting

Presentation –  
Company Report & Overview  
of Activities

November 2024

Thomas Kirkwood  
Environment & Community Superintendent

# Table of Contents

1. Agenda Item 7a (Progress at the Mine)
2. Agenda Item 7b (Environmental Reporting)
3. Agenda Item 7c (Environmental Management Plans and Monitoring)
4. Agenda Item 7d (Mine Closure Planning update)
5. Agenda Item 7e (Community Complaints)
6. Agenda Item 7f (Community Programs)
7. Agenda Item 7g (Stratford Renewable Energy Hub Update)

# 1. Progress at the Mine

## Mining 3<sup>rd</sup> Quarter 2024

Total Waste (LCM)	ROM (T)
1,084,465	0

Note: Waste now reported in LCM for rehandle

- Bowens Road North (BRN) Pit has been dewatered and backfilled in mid-September
- Ongoing re-handle at BRN to achieve final landform
- Re-handle also in Roseville West (RVW) Pit
- Decommissioning CHPP



Plate 1: Bowens Road North Pit, Taken October 2024



**BRN Pit**

**Roseville West**

# 2. Environmental Reporting & Regulators

Management Area	Project	Status
Reporting	<ul style="list-style-type: none"> <li>Stratford Mining Complex Annual Review 2023</li> </ul>	<ul style="list-style-type: none"> <li>The Stratford Mining Complex 2023 Annual Review has been prepared and submitted to DPHI and other regulators in March 2024. The Annual Review was accepted by DPHI in September 2024 and is now available on the Stratford Coal website.</li> <li><i>Please note Yancoal has launched a <b>new website</b> on 1 Nov 2024 and there are new webpages for both Stratford and Duralie mines. We are currently in the process of updating all external URLs and references.</i></li> </ul>
	<ul style="list-style-type: none"> <li>Stratford Mining Complex Annual Biodiversity Report 2023</li> <li>NPI and NGER reporting 2024</li> <li>EPL 5161 Annual Return</li> </ul>	<ul style="list-style-type: none"> <li>The Stratford Mining Complex 2023 Annual Biodiversity Report has been completed. The Annual Biodiversity Report has been included in the 2023 Annual Review.</li> <li>The NPI and NGER annual reporting requirements for the Stratford Coal Mine have been prepared and lodged with the relevant government agencies.</li> <li>The SMC EPL Annual Return was submitted to the NSW EPA in August 2024. The Annual Return is available on the EPA's public register.</li> </ul>
Regulator	<ul style="list-style-type: none"> <li>Environmental Management Plans (EMPs)</li> <li>EPA</li> </ul>	<ul style="list-style-type: none"> <li>SCPL is preparing revised Environmental Management Plans to reflect the current status of the SMC as the site transitions through closure.</li> <li>The EPA will be undertaking a routine 5 yearly Environmental Risk Assessment of EPL 5161 in November.</li> </ul>

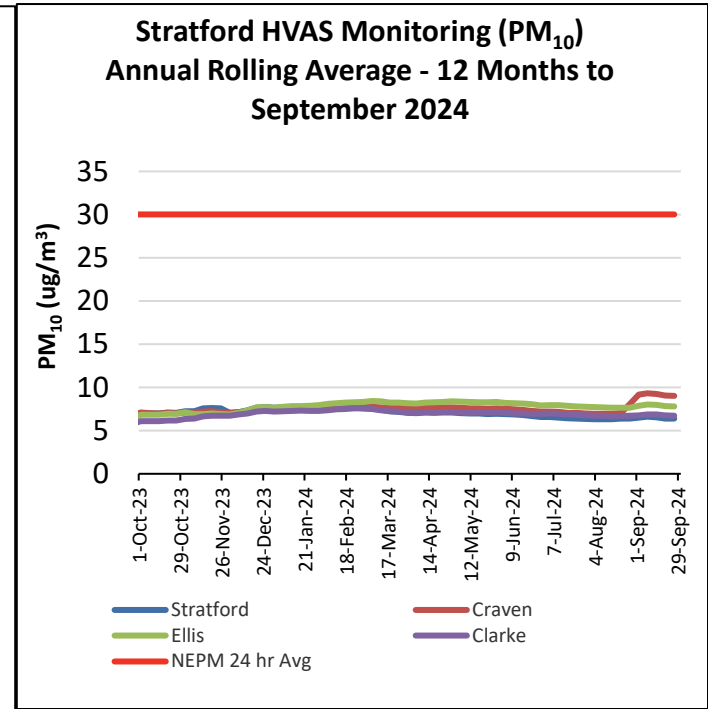
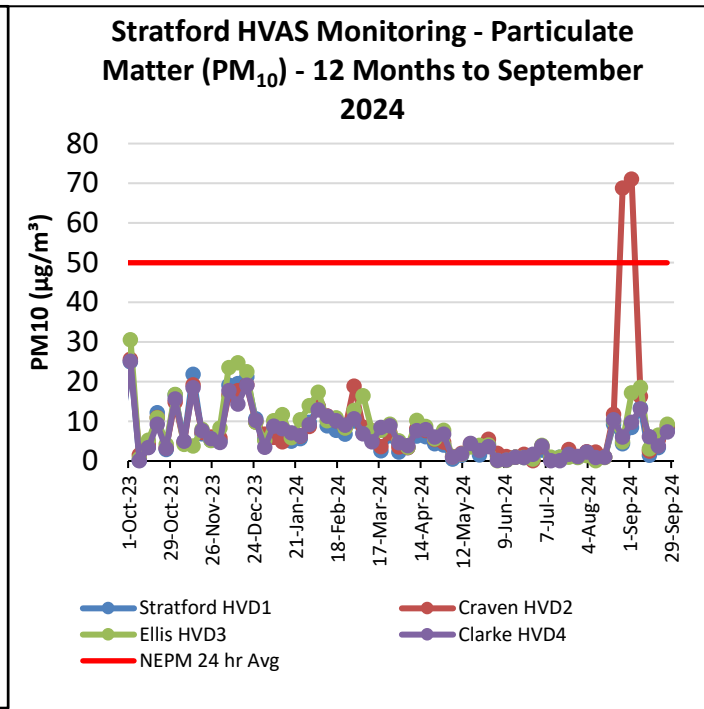
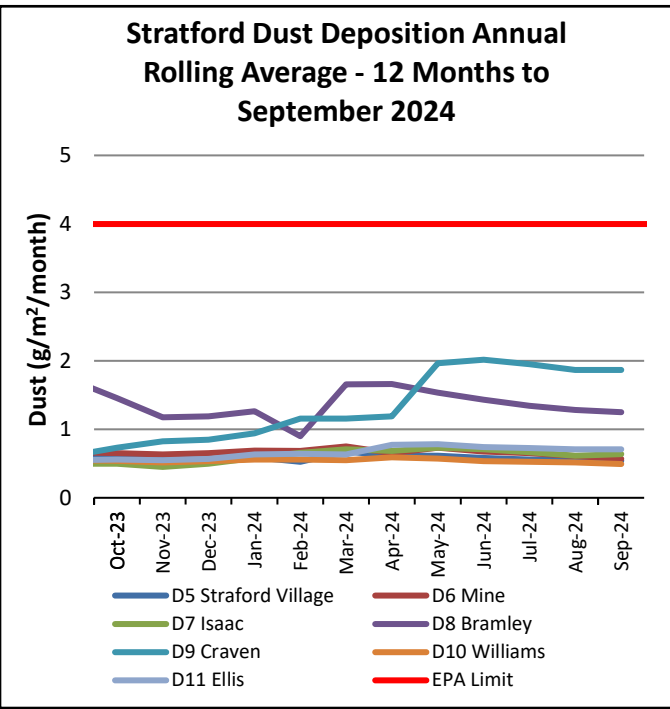
# 3. Environmental Management Plans & Monitoring

- a) Air Quality Management
- b) Noise Management
- c) Water Management
- d) Rehabilitation Management
- e) Biodiversity Management
- f) Mine Closure Planning



# 3a. Air Quality Management

Management Area	Project	Status
Air Quality Monitoring	<ul style="list-style-type: none"> <li>Real-time air quality monitoring</li> </ul>	<ul style="list-style-type: none"> <li>The real-time air quality TEOM monitors in Stratford and Craven villages continue to operate.</li> <li>Generally good overall air quality. All sites below limit (50<math>\mu\text{g}/\text{m}^3</math>) except for Craven HVD2 which was impacted by adjacent demolition work over two weeks. HVAS results provide more reliable data compared to dust deposition results and should be referred to when interpreting dust emissions.</li> <li>The real-time air quality management system analyses data from the TEOM units and records times when the air quality criteria is likely to be exceeded. The system will then provide alarms to staff to implement additional dust mitigation measures where required.</li> <li>No triggers have been received relating to mining operations.</li> </ul>



# 3b. Noise Management

Management Area	Project	Status
<b>Monitoring</b>	<ul style="list-style-type: none"> <li>Monthly Noise Survey</li> </ul>	<ul style="list-style-type: none"> <li>Three monthly attended noise monitoring rounds were undertaken during Q3.</li> <li>No non-compliant results were recorded during the surveys. June and July reports are available on the Stratford Coal website.</li> <li>The next monitoring round is scheduled for November 2024.</li> </ul>
<b>Real-Time Noise</b>	<ul style="list-style-type: none"> <li>Real-Time Noise System</li> <li>Noise forecast reports</li> </ul>	<ul style="list-style-type: none"> <li>Real-time noise monitors continue to operate near Stratford Village and Craven Village.</li> <li>The integrated real-time noise management analyses data from the noise units, the weather station and the inversion towers and records times when either the noise criteria is likely to be exceeded or when noise enhancing weather conditions are present. The system provides alarms to staff to implement additional noise mitigation measures where required.</li> <li>Daily predicted noise and dust forecast reports are generated and are issued to the mining supervisors prior to each shift.</li> </ul>



# 3c. Water Management

Management Area	Project	Status
<b>Water Management</b>	<ul style="list-style-type: none"><li>Avon North and Stratford East Pumping</li></ul>	<ul style="list-style-type: none"><li>Dewatering of Stratford East continues.</li><li>Water transfers to Avon North from Old Main Pit (OWP) and RVW.</li></ul>
<b>Surface Water Monitoring</b>	<ul style="list-style-type: none"><li>Routine monitoring</li></ul>	<ul style="list-style-type: none"><li>Routine water sampling continued.</li><li>All results consistent with the SMC Environmental Assessment predictions.</li><li>Average rainfall was received during Q3 2024.</li></ul>



**Plate 1:** Stratford East Pit, October 2024.

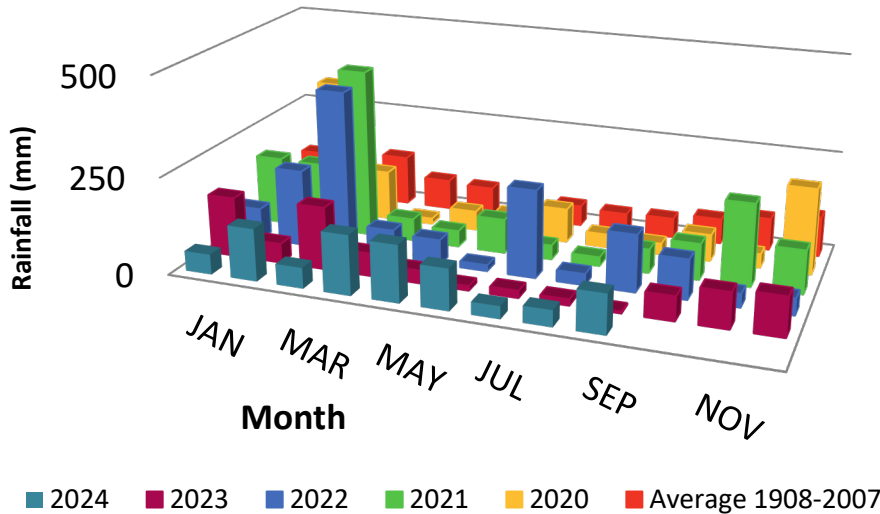


**Plate 2:** Avon North Pit Water Storage, September 2024.

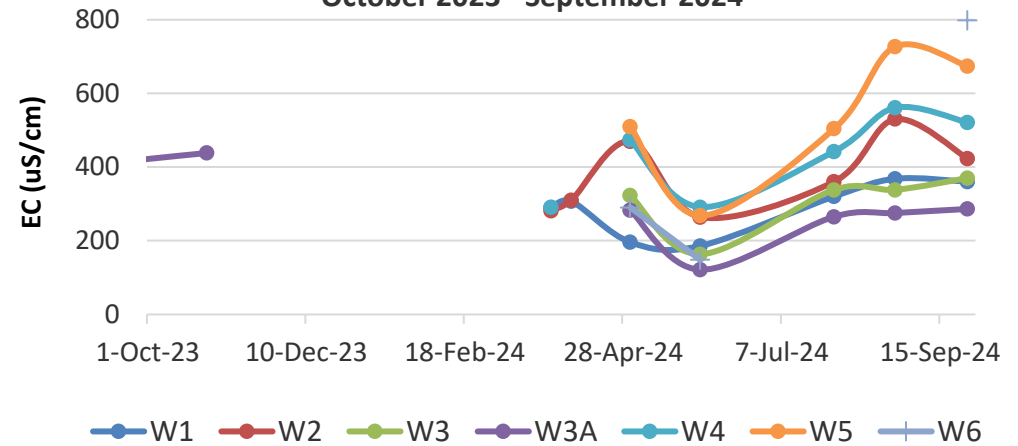
# 3c. Water Management

Note: Gaps in data approx. between September 2023 and February 2024 are due to monitoring sites have no flow

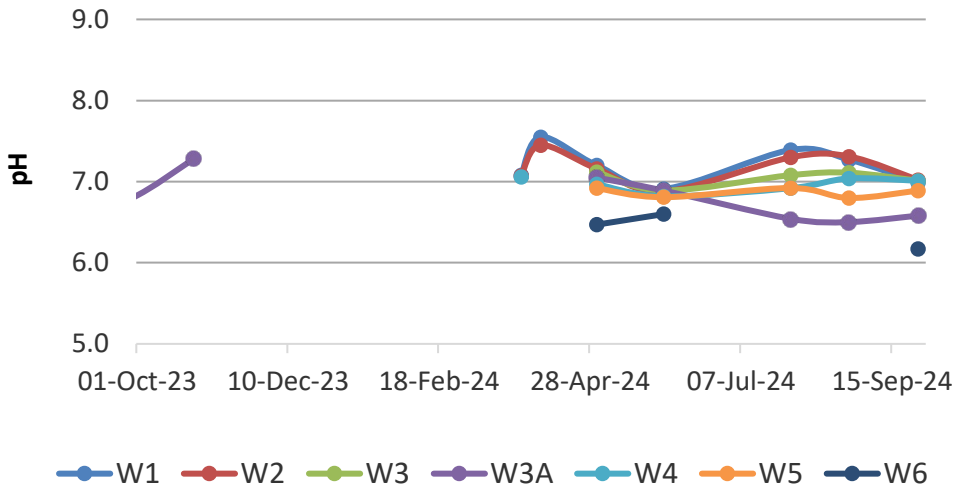
### Stratford Mining Complex – Monthly Rainfall



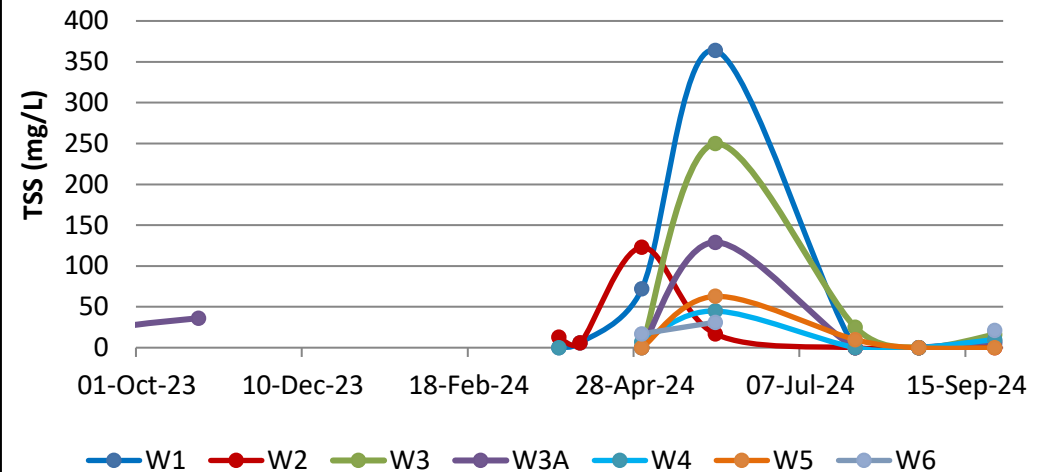
### Electrical Conductivity (EC) Avon River & Avondale Creek October 2023 - September 2024



### pH Avon River & Avondale Creek October 2023 - September 2024



### Total Suspended Solids (mg/L) Avon River & Avondale Creek October 2023 - September 2024



# 3c. Water Management

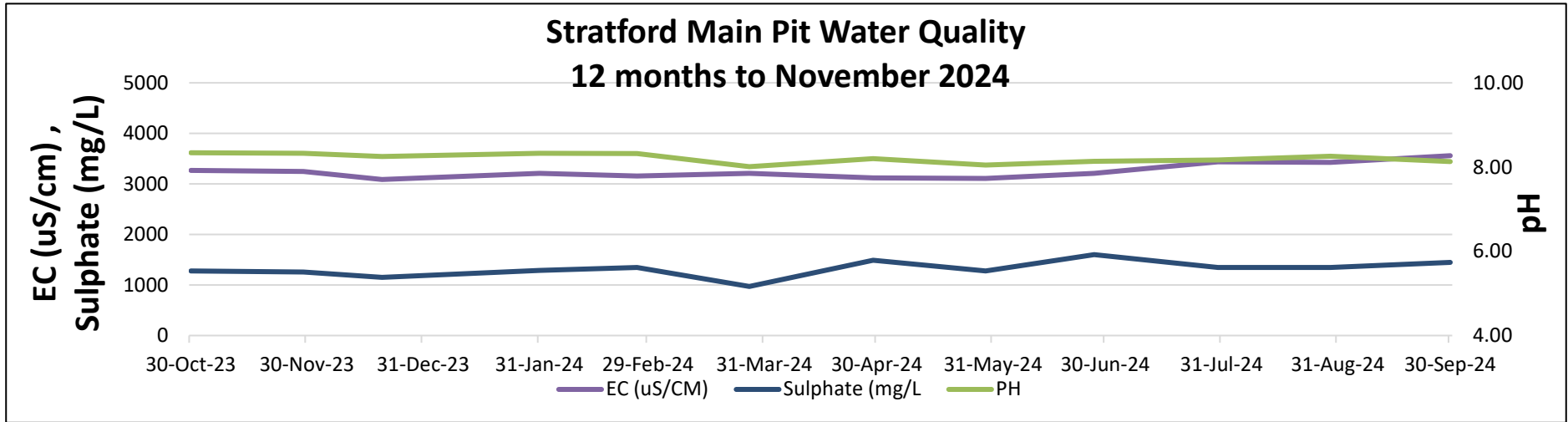


Plate 3: Stratford Main Pit, S-W aspect.



Plate 4: Stratford Main Pit, S-E aspect.



# 3d. Rehabilitation and Biodiversity Management

Management Area	Project	Status
<b>Rehabilitated Waste Emplacements</b>	<ul style="list-style-type: none"> <li>• Backfilling and bulk-shaping</li> </ul>	<ul style="list-style-type: none"> <li>• Backfilling in Roseville West Pit and Bowens Road North has continued in Q3 2024.</li> </ul>
<b>Monitoring</b>	<ul style="list-style-type: none"> <li>• Vegetation Monitoring - Ecosystem Function Analysis</li> </ul>	<ul style="list-style-type: none"> <li>• Rehabilitation monitoring incorporating landscape function analysis and vegetation dynamics was completed in July 2024. A summary of the results will be included in the 2024 Annual Review.</li> </ul>
<b>Weed Management</b>	<ul style="list-style-type: none"> <li>• Stratford Waste Emplacement</li> </ul>	<ul style="list-style-type: none"> <li>• Manual weed removal project completed in the Stratford Waste Emplacement woodland rehabilitation area during August 2024.</li> </ul>



**Plate 5:** Avon North Waste Emplacement, varied native tree, shrub and grasses.



**Plate 6:** Main Pit Rehabilitation, exotic pasture grasses.



# 3e. Biodiversity Management

Management Area	Project	Status
<b>Biodiversity Offset Area</b>	<ul style="list-style-type: none"><li>• Revegetation Planning</li><li>• Revegetation Works</li></ul>	<ul style="list-style-type: none"><li>• Three-year revegetation planting and infill plan has been completed.</li><li>• Planning underway for the 2025 planting program. The 2025 program will focus on infill planting areas of lower density areas.</li></ul>
<b>Nest Box Program</b>	<ul style="list-style-type: none"><li>• Nest Box Monitoring</li></ul>	<ul style="list-style-type: none"><li>• Nest box monitoring currently underway in the Stratford Biodiversity Offset and Enhancement areas.</li><li>• Annual Nest Box monitoring has found 93% of nest boxes were either occupied or showing signs of occupancy after approximately 3 years.</li></ul>

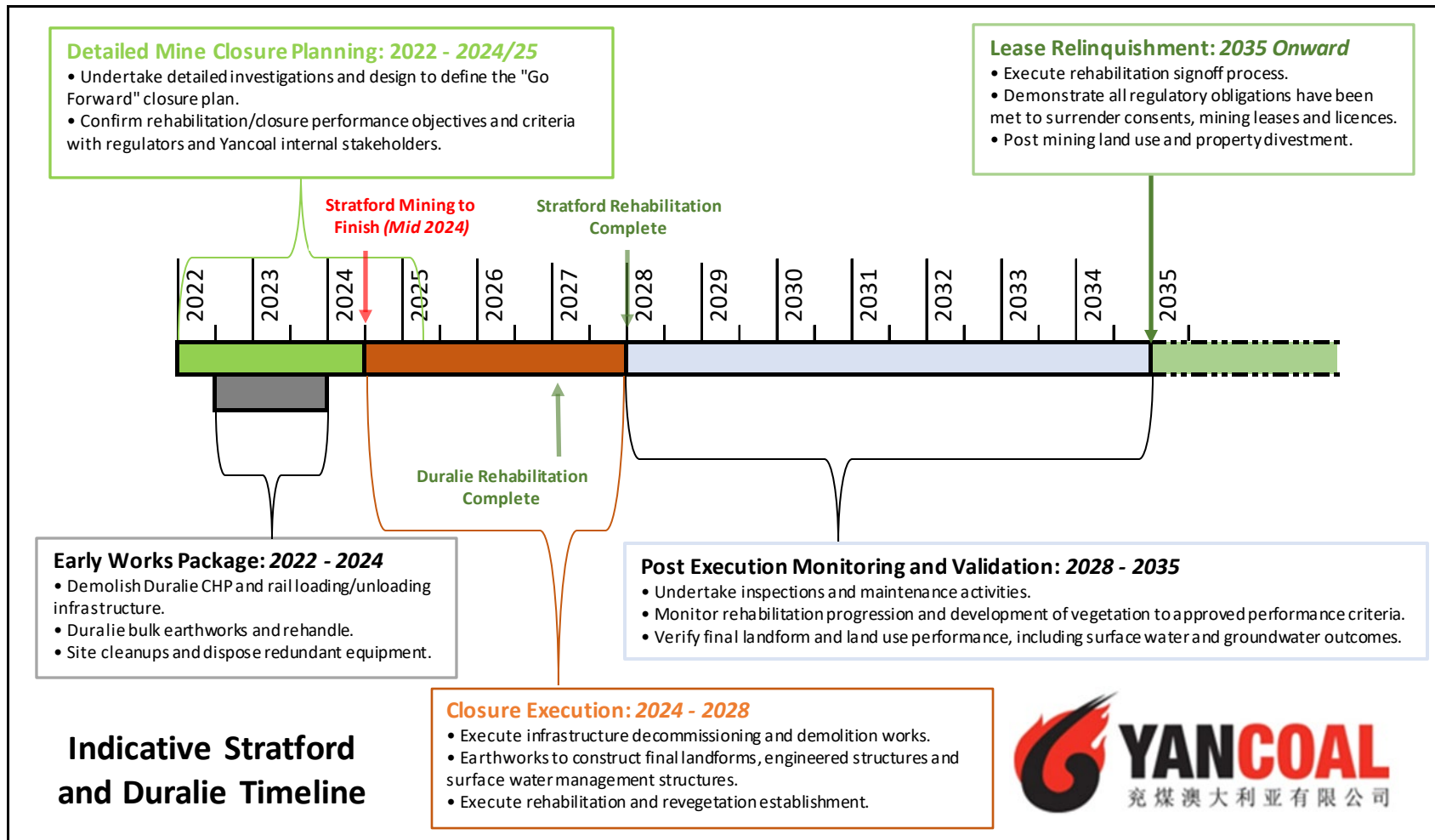


**Plate 1:** Squirrel Gliders, Oct 2024



**Plate 2:** Sugar Glider's, Oct 2024

# 4. Detailed Mine Closure Planning – Timeline



# 4. Mine Closure – Transition to Closure

## Focus for Rest of 2024

- Detailed Mine Closure Studies
- Rehandling and reshaping BRN and Roseville West
  - Excavator, supported by trucks and dozers.
  - All rehandle expected to take until approximately end of 2027.
  - Dewater Stratford East Pit and return water dam.
- Rehabilitation
  - Progressive rehabilitation as areas become available.
- CHPP
  - Decommissioning and power/services augmentation works.
  - Preparation for CHPP demolition in 2025.



# 4. Mine Closure Planning

Aspect	Status
<b>General</b>	<ul style="list-style-type: none"><li>• Detailed Mine Closure studies currently expected to be completed in Q1 2025.</li><li>• Detailed Mine Closure Plan will inform closure execution works</li><li>• Consent (SSD_4966) and Mining Leases continue to be in force until the site is rehabilitated to the satisfaction of DPHI and Resources Regulator.</li></ul>
<b>Rehabilitation</b>	<ul style="list-style-type: none"><li>• Final Landform and Rehabilitation Plans (FLRP) will be revised following completion of Detailed Mine Closure Plan.</li><li>• Yancoal and the Resources Regulator acknowledge that the currently proposed landforms may change as the closure planning evolves.</li></ul>
<b>Environmental Management, Monitoring &amp; Maintenance</b>	<ul style="list-style-type: none"><li>• EMPs will be progressively reviewed and updated to reflect the stage of operations and closure works.</li></ul>
<b>Stakeholder and Community</b>	<ul style="list-style-type: none"><li>• Communications with the workforce, CCC and other stakeholders will continue throughout closure.</li><li>• Closure updates to the CCC will continue to be provided.</li></ul>



# 4. Mine Closure Planning

Aspect	Status
<b>Final land use</b>	<ul style="list-style-type: none"><li>• The target post-mining land uses are agricultural grazing, native vegetation and water bodies.</li></ul>
<b>Final Landforms</b>	<ul style="list-style-type: none"><li>• Landform refinements are continuing as part of the on-going mine closure planning.</li><li>• Refinements are iterative, consider mine planning, landform stability, landscape evolution modelling, geochemistry and water management.</li></ul>
<b>Final Voids</b>	<ul style="list-style-type: none"><li>• Final void design detailed refinements are continuing for Avon North, Roseville West and Old Main Pit.</li><li>• Iterations consider external drainage, landform refinements and water predictions.</li></ul>
<b>Water</b>	<ul style="list-style-type: none"><li>• Water management and prediction are progressively being revised for rehabilitation and post rehabilitation phases.</li><li>• Considerations include water storages, diversions, drainage construction, rehabilitation sequencing and erosion and sediment control.</li><li>• Water infrastructure design work is continuing (bunds, drains and sediment dams etc).</li></ul>
<b>Infrastructure</b>	<ul style="list-style-type: none"><li>• CHPP to be demolished following sale period.</li><li>• Options for sale, reuse and recycling of resources and infrastructure are being investigated.</li><li>• Infrastructure will be progressively decommissioned where not required to support closure works.</li><li>• Infrastructure to be retained will be subject to approval by the Resources Regulator.</li></ul>



# 5. Community Complaints - Summary

Period: 1/7/24 – 1/11/24				
Period: 3 Months				
Total No. of Complaints: 1				
Total No. of Complainants: 1				
Date/Time of Complaint	Complainant Location	Method of Complaint	Nature of Complaint	Investigation/Outcome
24/08/24 16:30	North of operations	NSW EPA Environmental Report Line	Noise	<ul style="list-style-type: none"> <li>EPA A/ Unit Head contacted SMC Environment &amp; Community Superintendent (ECS) via phone at 04:30PM 14/8/2024.</li> <li>EPA A/ Unit Head explained that the EPA had received a complaint from an anonymous complainant regarding noise generation at SMC via the EPA Environment Report Line. EPA A/ Unit Head detailed the complaint as a 'screeching and whirling' noise coming from the operation from 9:00pm on 13/8/2024 until 9:00am 14/8/2024, the complainant's location was described as 'to the North of the operation'.</li> <li>ECS explained that the operation had not received any complaints or comments from the community regarding the reported noise impact and committed to investigating the complaint. ECS informed EPA A/ Unit Head of the sites 24/7 complaints line and its ability for complainants to remain anonymous, ECS noted that anonymous complaints are difficult to adequately address due to the lack of location detail and ability to gain adequate detail. ECS also highlighted the SMC real time noise management system and predictive tools to manage noise on site.</li> <li>EPA A/ Unit Head thanked ECS for the information and stated that the EPA would be in touch via email to request further information from SMC.</li> <li>Mining Superintendent and on shift OCE investigated potential noise sources of 'screeching and whirling' and identified increased track noise from DZ218 in the Roseville West Pit to potentially be causing the described noise impact. DZ218 was taken out of service (pending mechanical inspection) at approximately 6:00PM.</li> </ul>

# 6. Community Programs

Management Area	Project	Status
Support Programs	Stratford Coal Community Support Program (CSP)	<ul style="list-style-type: none"><li>• Applications for the 2025 Community Support Program closed in September.</li><li>• Received 37 application from a wide range of community groups and organisations.</li><li>• Currently reviewing applications.</li><li>• Applicants to be notified towards the end of November</li></ul>
	Stratford Coal Education Support Fund	<ul style="list-style-type: none"><li>• The Stratford Coal Education Support Fund will be running again during 2025, applications are available from Gloucester High School or the MidCoast Council Gloucester office.</li><li>• Applications will open in December 2024 and close on 31 January 2025.</li></ul>



# 7. Stratford Renewable Energy Hub - Update

- Community information sessions provided in Stratford and Gloucester on 17 & 18 September, respectively
- SREH Newsletter, SREH Fact Sheet, Newspaper and radio ads distributed September and October
- EIS Summary Booklet made available during community information sessions and on our website:  
<https://www.stratfordrenewableenergyhub.com.au/>



# 7. Stratford Renewable Energy Hub - Update

- EIS exhibited from 2<sup>nd</sup> -29<sup>th</sup> October
- Total of 96 public submissions:
  - 75 objections
  - 17 support
  - 4 comments
- Next steps include:
  - Yancoal to review public submissions and other Government agency advice
  - Yancoal to respond to issues raised in submissions – Submissions Report submitted to NSW DPHI
  - NSW DPHI completes its assessment and makes recommendation to the Minister (for Planning and Public Spaces)
  - Minister determines the Project application

