



Ashton Coal Operations Pty Ltd Community Consultative Committee Presentation – 24 November 2015



Action List

ITEM	RESPONSIBILITY	PROGRESS UPDATE
Tree Screen at New England Hwy – Optic fibre has been located and the area needs to be archeologically cleared to allow for the tree screens to commence.	DS	Ripping completed and tree planting has commenced

Ashton Statistics

Ashton Coal Statistics		
	2015 Budget (YTD)	2015 Actual
ROM (t)	2,365,145	2,483,455
Product Coal (t)	1,112,931	1,126,891
Total Coal Sales (t)	1,062,000	1,071,467
Lost Time Injury (LTIFR)	7.95	19.9
Total Recordable Injuries (TRIFR)	33.31	44.9
Total Employees (FTE)	222	201

Community Support Program

- **Community Support Applications**
 - Singleton Heights Public School – sensory garden.
 - Singleton Archery Society – development range and equipment for juniors
 - Singleton Beef and LMA – portable amplifier system
 - Singleton Heights Pre-school – outdoor classroom
 - Singleton Strikers – shade shelter for Alroy Park
 - Beyond Blue – Kokada trek 2016
 - Whitmore Enterprises – Lawn Mowing Service
 - Singleton Shire Council – Mayoral Scholarship Program
 - Howe Park Tennis Club – Construction of tennis courts
- **How the program works**
 - Local groups are invited to submit applications at set dates
 - Group consisting of Ashton Coal employees and selected community representative access applications
- **Application forms available on Ashton website – next round 31 March 2016**



Yancoal Community Support Program

Committed to investing in community projects and groups across Singleton and the surrounding areas, applications for Ashton Coal's Community Support Program are now open.

**Applications
for the current
allocation close
31st October 2015.**



To download guidelines and an application form, please visit www.ashtoncoal.com.au and click on the top 'Environment and Community' tab, then Community Support Program.



AW1785128

Community Support Program

Organisation	Purpose	Amount (\$)
Singleton Mayoral Scholarship	Academic Scholarship 2015	\$5,500
Naidoc celebration week	NAIDOC celebrations coordinated by the Singleton council	\$2,000
The Pancar Foundation and the Calcary Mater Hospital	High tea - Fundraiser for pancreatic cancer	\$300
Hunter region SLSA Helicopter Rescue Services	Westpac helicopter charity shield knock out competition (rugby league)	\$750
Singleton Junior Rugby Club	Adopt-a-road program on Glennies Creek	\$1,650
Northern Agricultural Association	2015 Singleton Show	\$3,500
Witmore Enterprises	Vinyl covered chairs	\$3,500
Singleton Public School	P&C canteen provided with two freestanding oven and stove tops	\$2,800
Cancer Council	Relay for Life - Team McInerney	\$2,000
		\$22,000

20 November 2015

ASX Release:

NSW Court of Appeal Decision Ashton South East Open Cut Project

The New South Wales Court of Appeal has determined to uphold a condition attached to the Ashton South East Open Cut (SEOC) Project Approval granted by the NSW Land & Environment Court on 27 August 2014.

The condition provided that no development work associated with the Project could occur until Ashton Coal Operations Pty Ltd had acquired a privately owned property which formed part of the proposed mining area.

Yancoal is taking the appropriate time required to assess the implications of today's judgment upon the future development of the proposed project.

The proposed open cut mine is expected to produce up to 3.6 Million tonnes per annum Run of Mine (ROM) semi-soft coking coal for a period of seven years.

The SEOC Project was initially approved by the NSW Planning Assessment Commission (PAC) in October 2012. Approval was granted following a thorough environmental assessment of the Project, in accordance with all regulatory requirements.

End

Current Operations

- ACOL is approximately one third of the way through LW104 in the Upper Liddell Seam.
- South East Open Cut – no further movement
- Upper Lower Liddell Drifts (ULLD) have been completed and pit bottom drivage is continuing in readiness for mining in the ULLD seam.



Exploration Activities

No exploration was conducted in EL5860 or EL4918.



Approvals Update

As mining at ACOL progresses additional approvals are required to continue operations.

Recent Approval determinations include:

- First workings for ULLD 201-204 mains and gate roads

Approvals lodged include:

- Extraction Plan (EP) for LW 105-107 in the Upper Liddell Seam. Lodged 6 August 2015. Currently being assessed by the Department of Planning

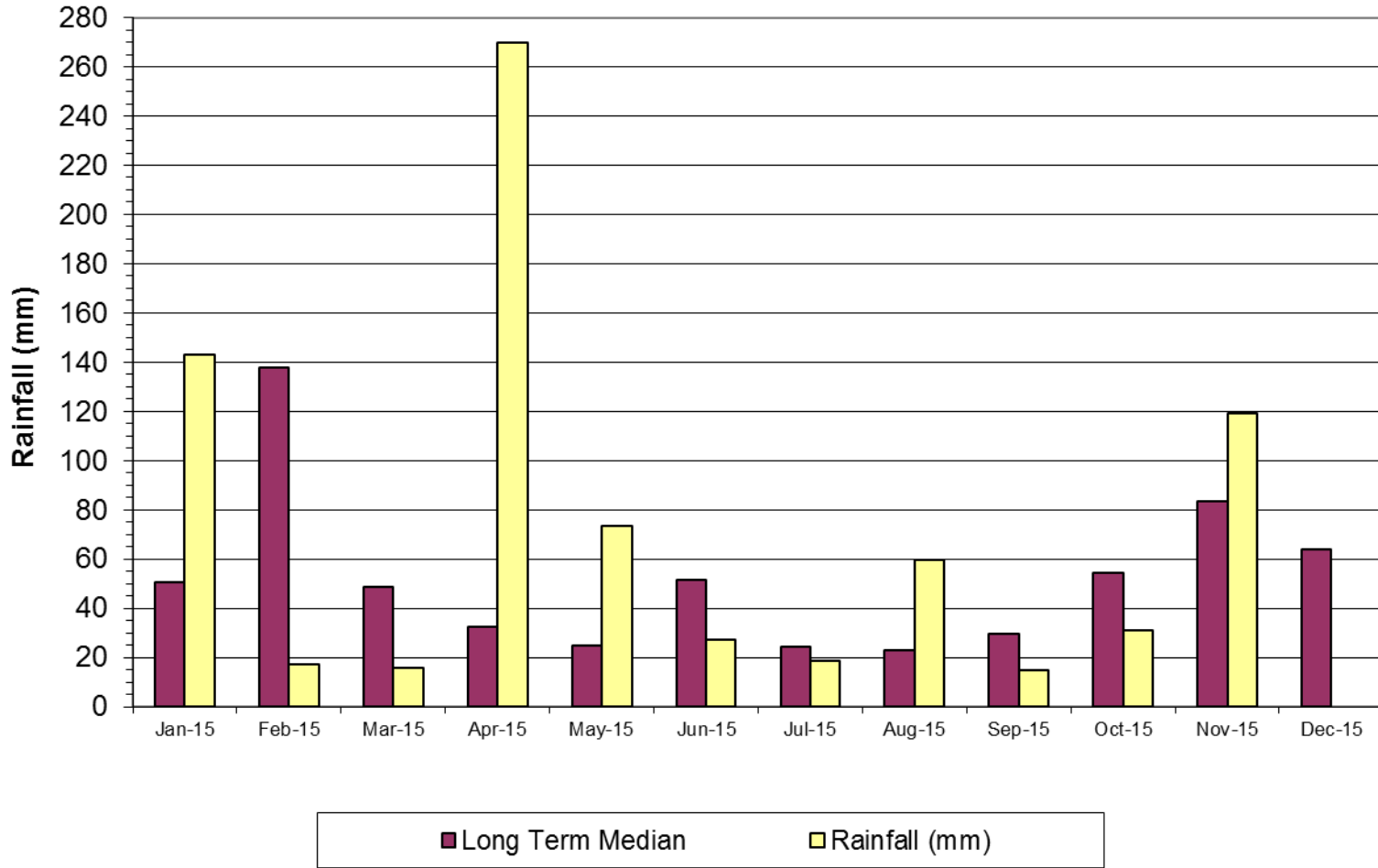


Environment Monitoring Data

- The following slides present environmental monitoring data for the reporting period
- Meteorological
 - Rainfall
- Air Quality
 - Depositional Dust Gauges – Total suspended dust
 - PM10 – Tapered Element Oscillating Microbalance (TEOM)
- Surface Water – Glennies Ck, Bowmans Ck and Hunter River
- Groundwater – various aquifers
- Noise

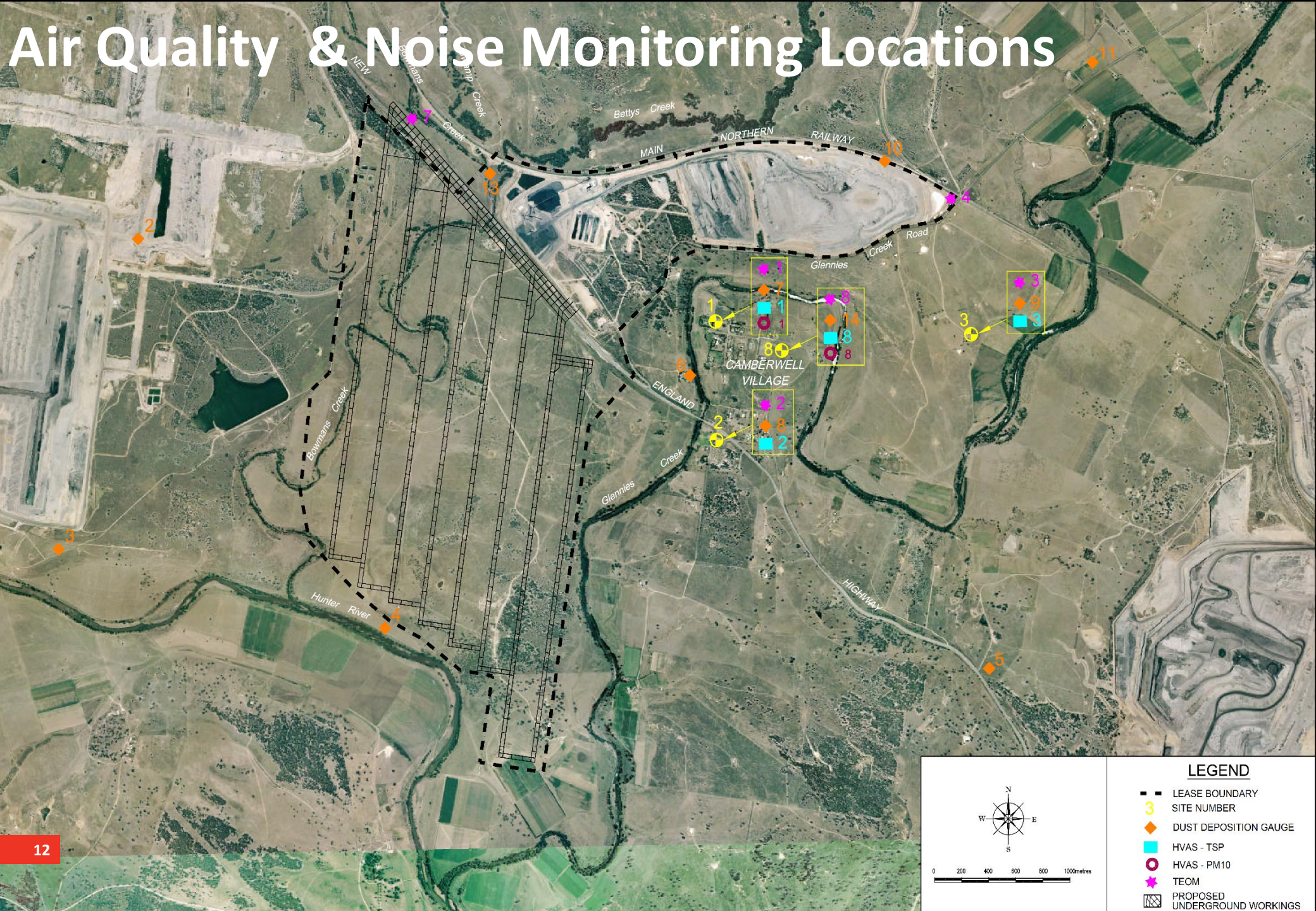
Rainfall

Rainfall at Repeater 2015



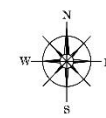
YTD Rainfall:
789mm

Air Quality & Noise Monitoring Locations

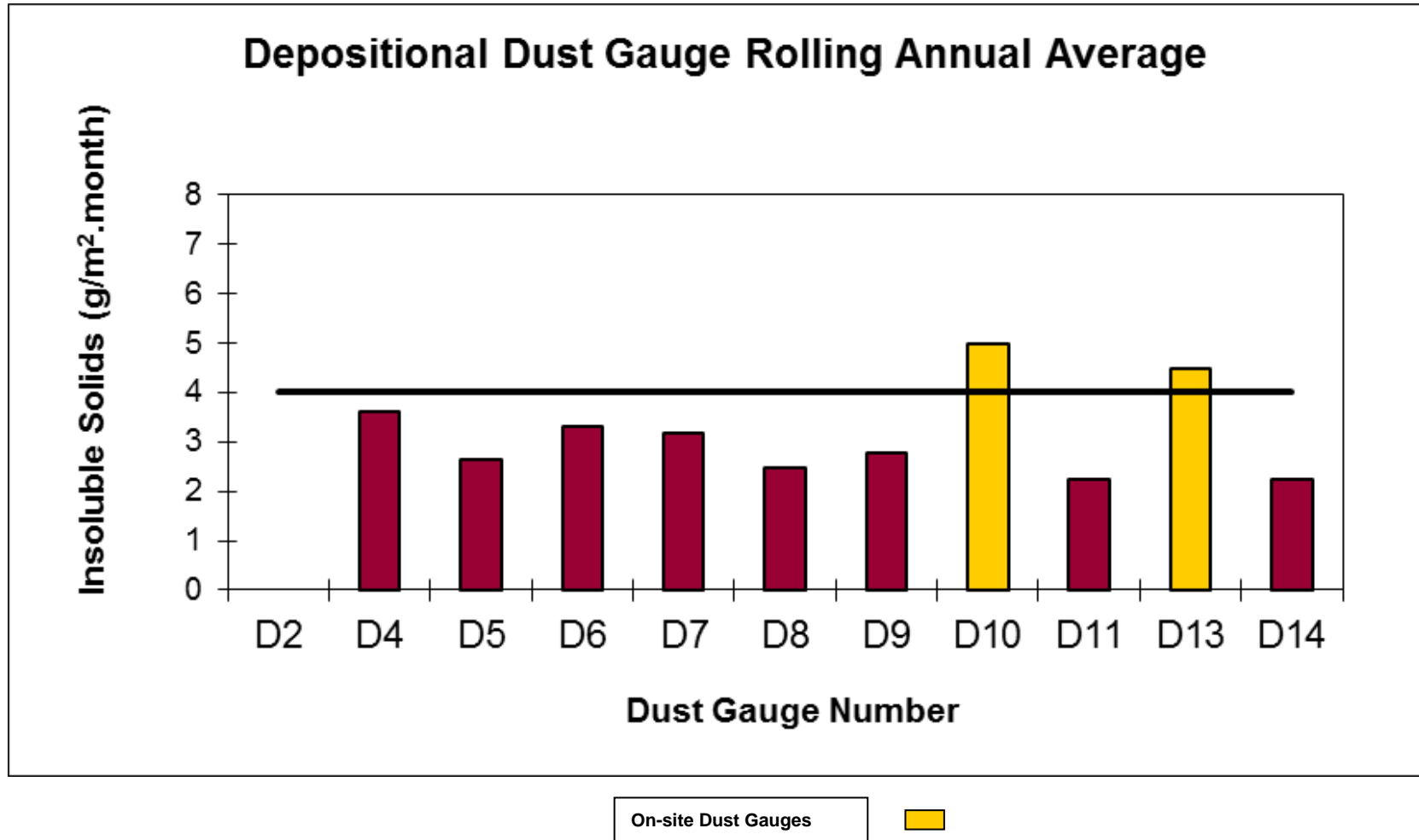


LEGEND

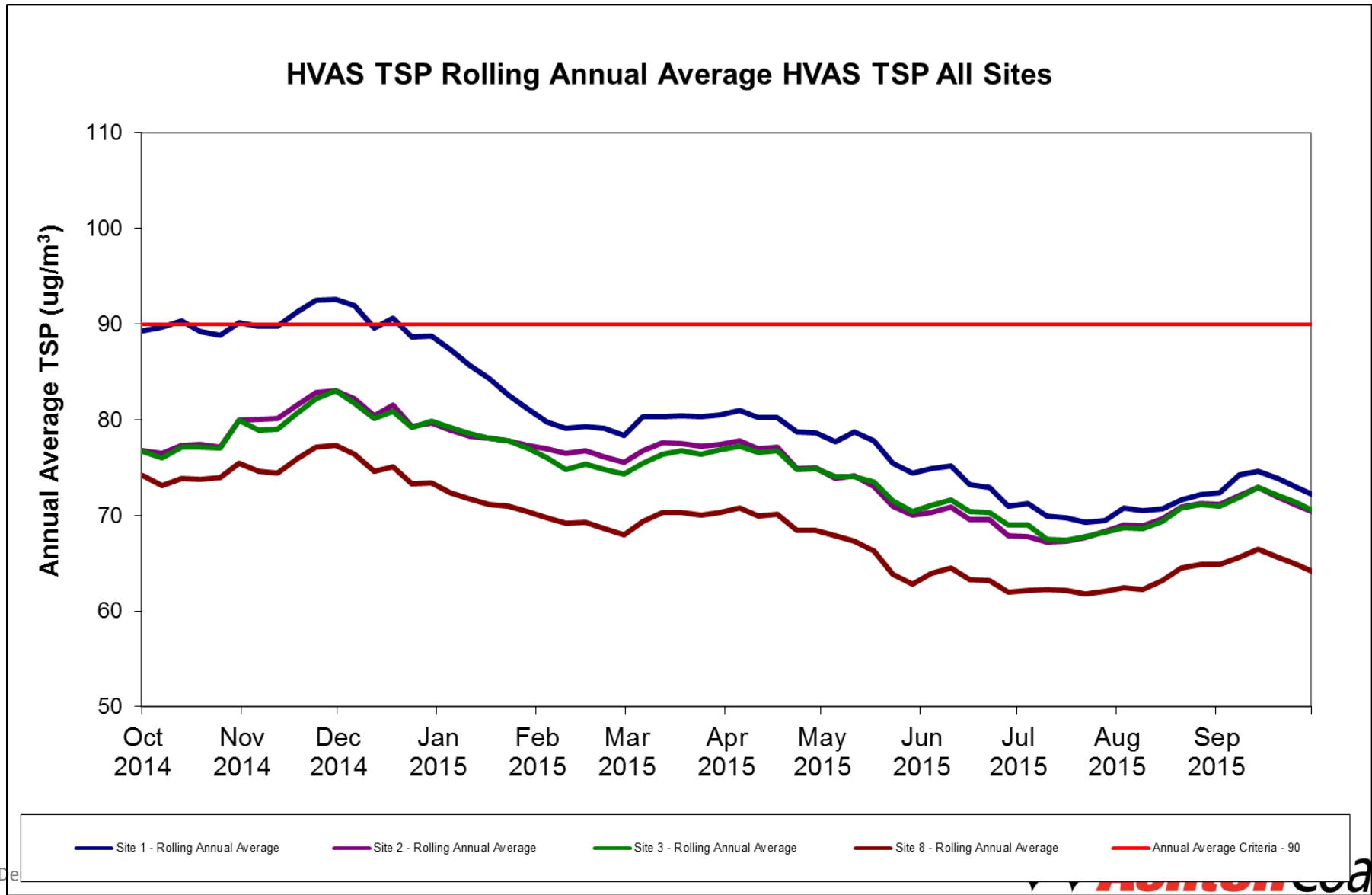
- LEASE BOUNDARY
- 3 SITE NUMBER
- ◆ DUST DEPOSITION GAUGE
- HVAS - TSP
- HVAS - PM10
- ★ TEOM
- ▨ PROPOSED UNDERGROUND WORKINGS



Depositional Dust

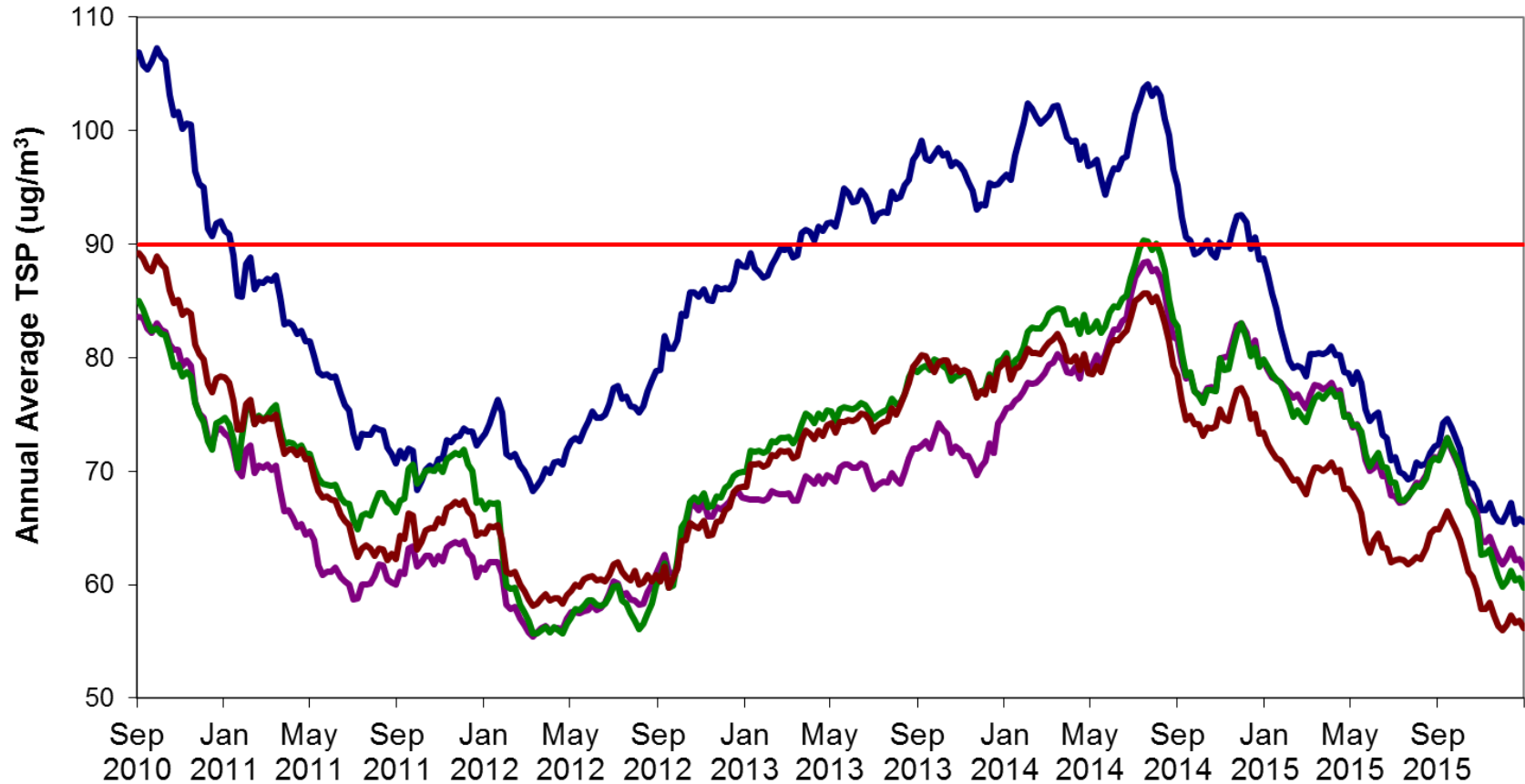


Total Suspended Dust



Total Suspended Dust

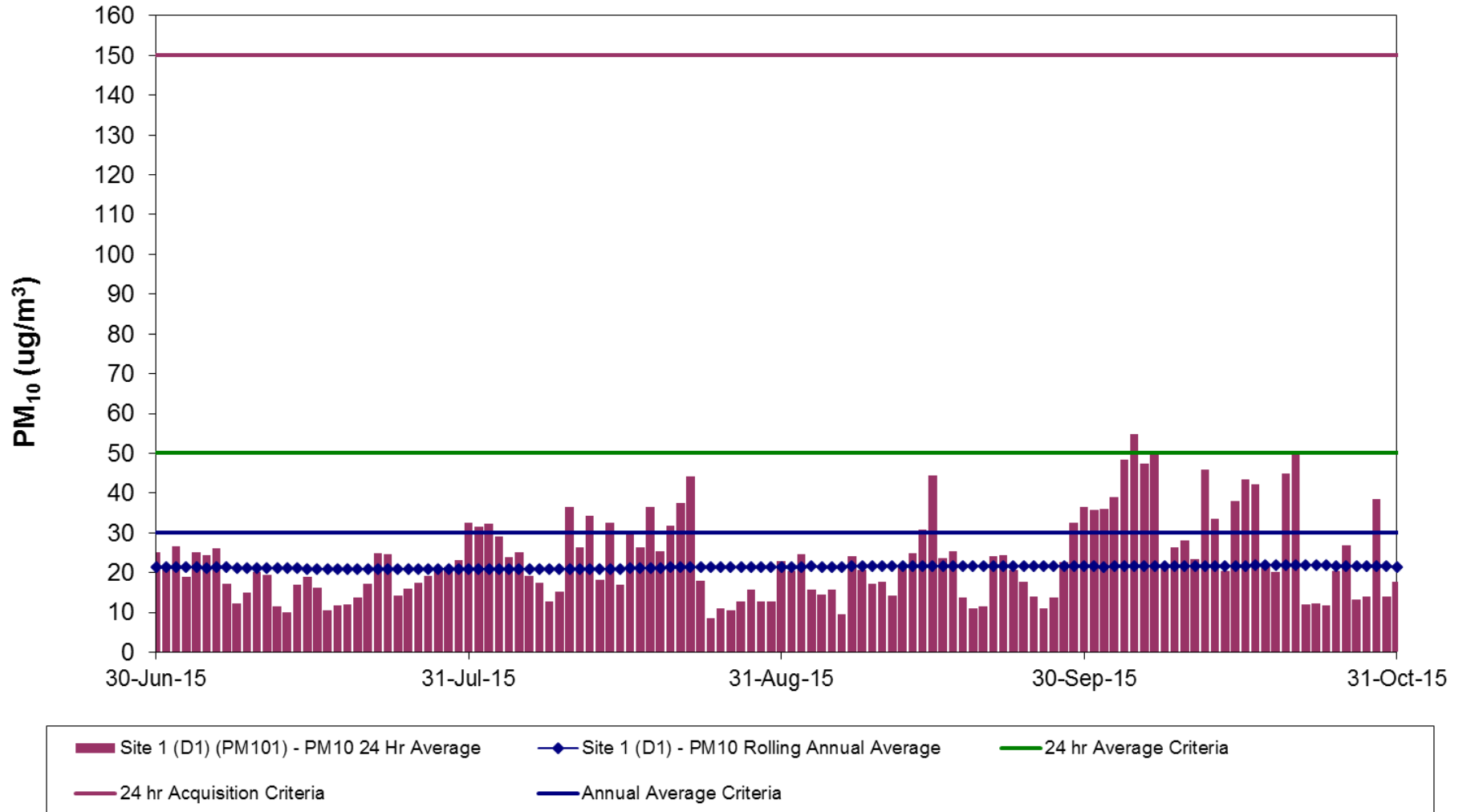
HVAS TSP Rolling Annual Average HVAS TSP All Sites



Site 1 - Rolling Annual Average Site 2 - Rolling Annual Average Site 3 - Rolling Annual Average Site 8 - Rolling Annual Average Annual Average Criteria - 90

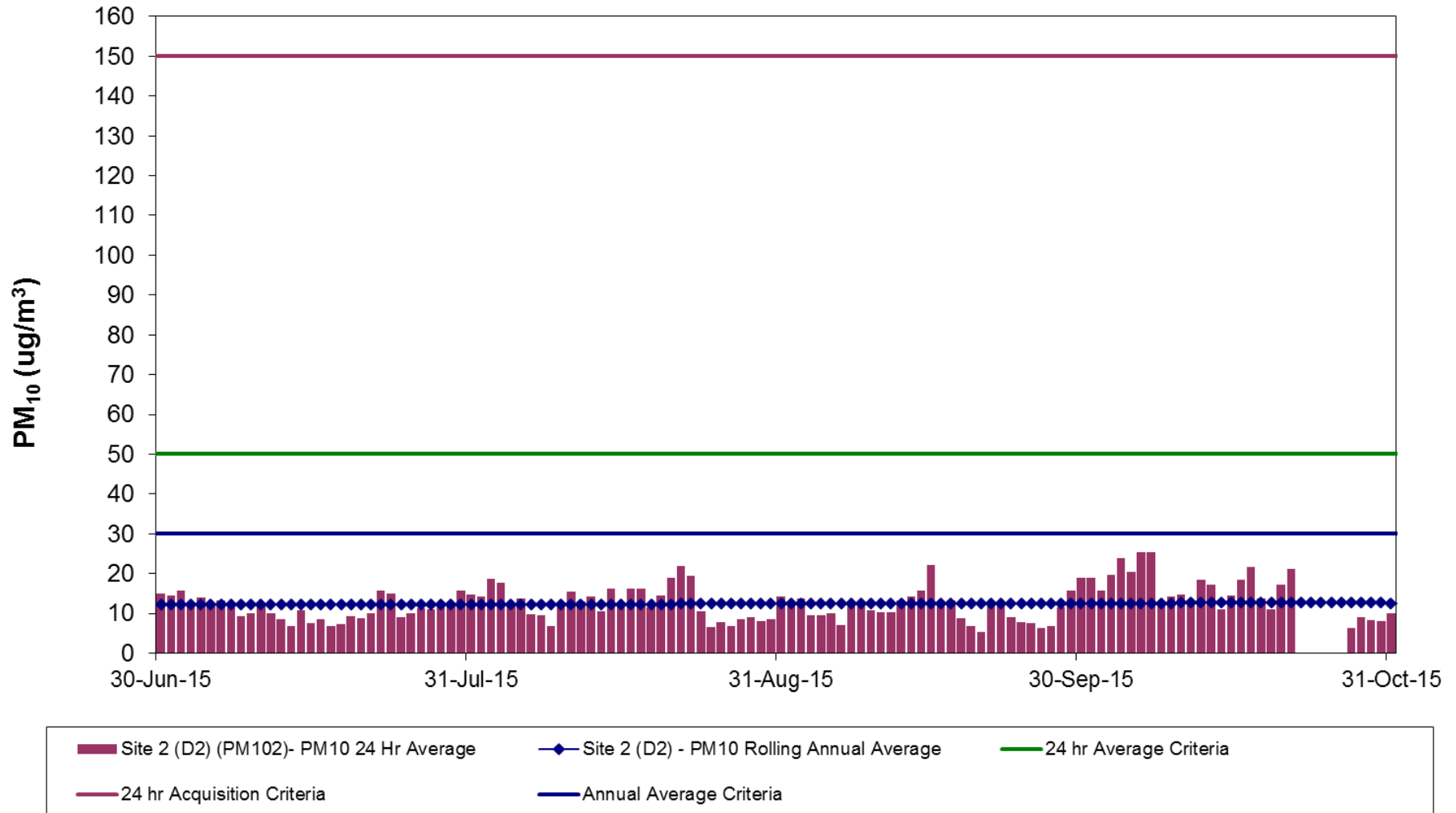
PM₁₀ Dust – Site 1

Site 1 TEOM PM₁₀ Results



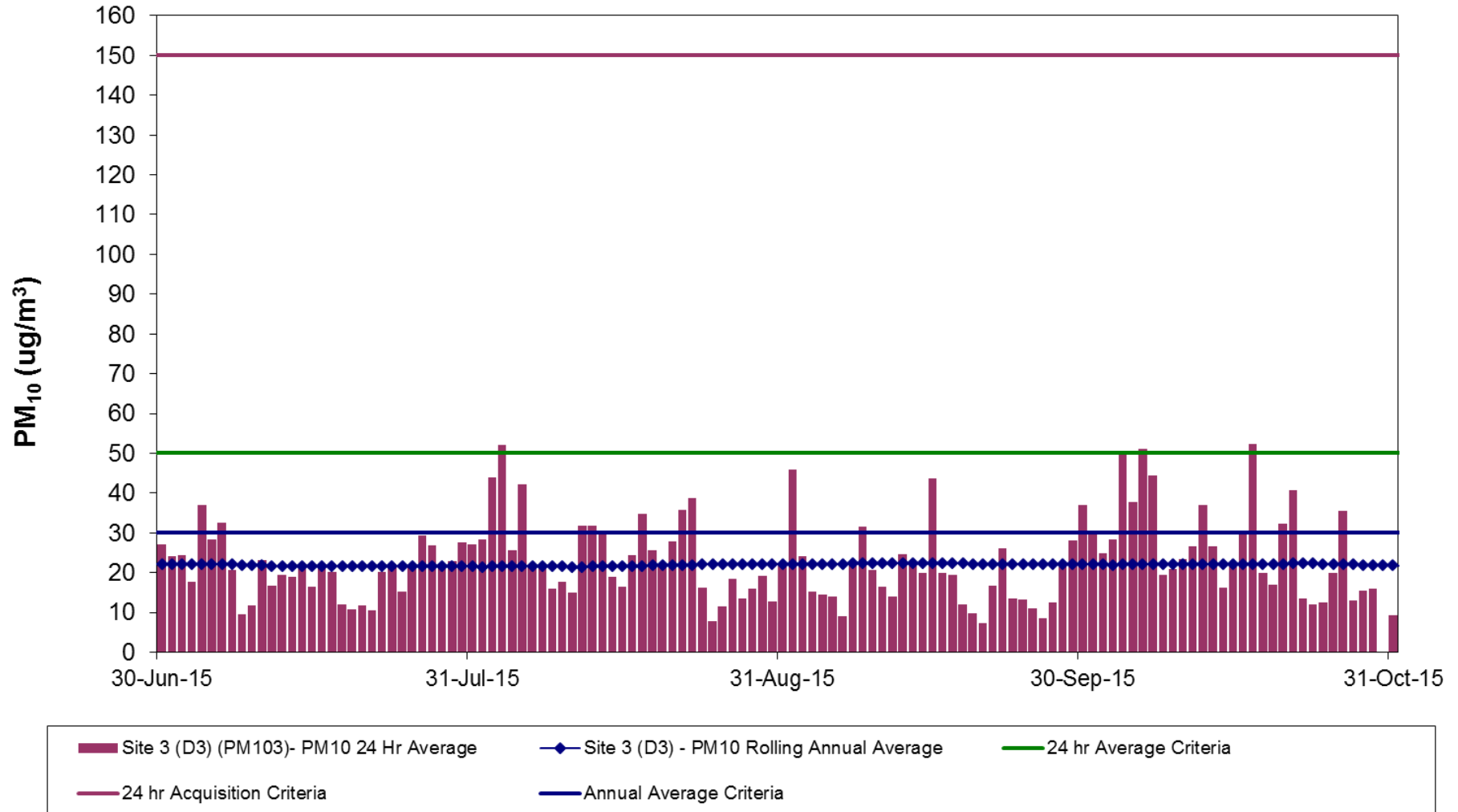
PM₁₀ Dust – Site 2

Site 2 TEOM PM₁₀ Results



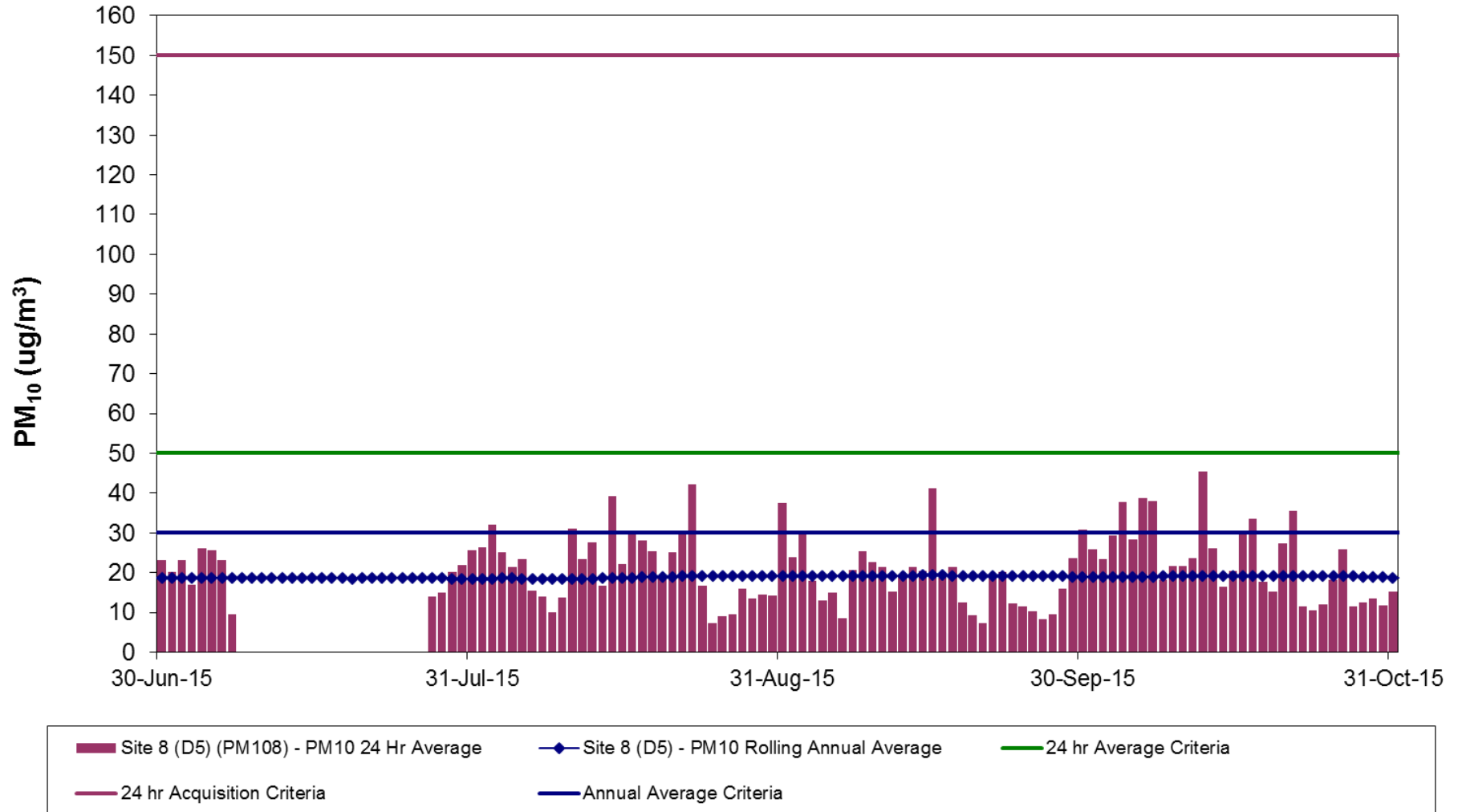
PM₁₀ Dust – Site 3

Site 3 TEOM PM₁₀ Results

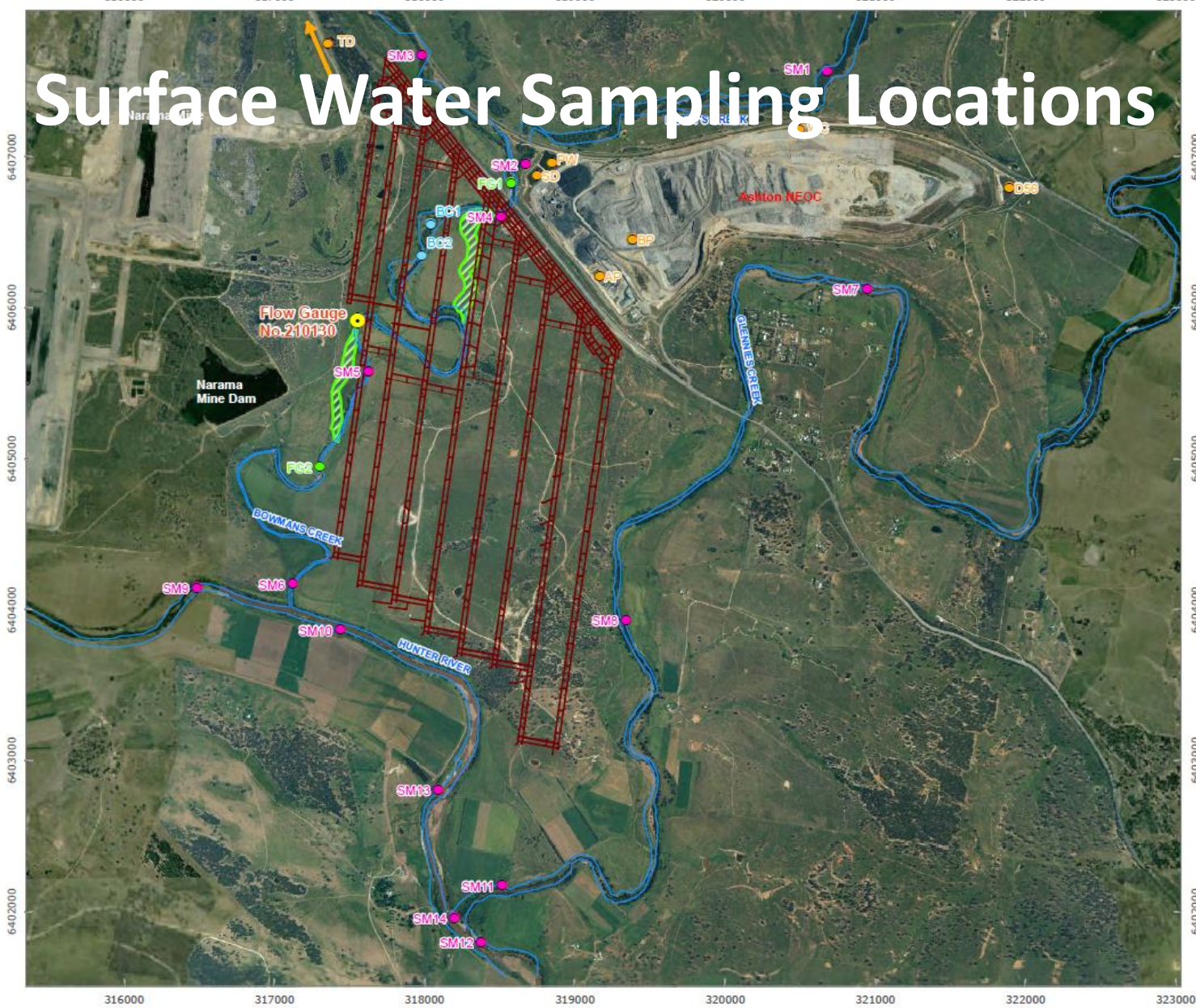


PM₁₀ Dust – Site 8

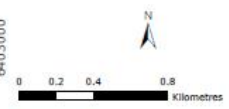
Site 8 TEOM PM₁₀ Results



Surface Water Sampling Locations



- LEGEND**
- Surface Water Monitoring Location
 - Onsite Water Management Monitoring Location
 - Bowmans Creek Monitoring Location
 - ACOL Flow Gauge
 - NSW Office of Water Gauge
 - Upper Liddell Mine Plan
 - Creeks or River
 - ▨ Diversion Footprint



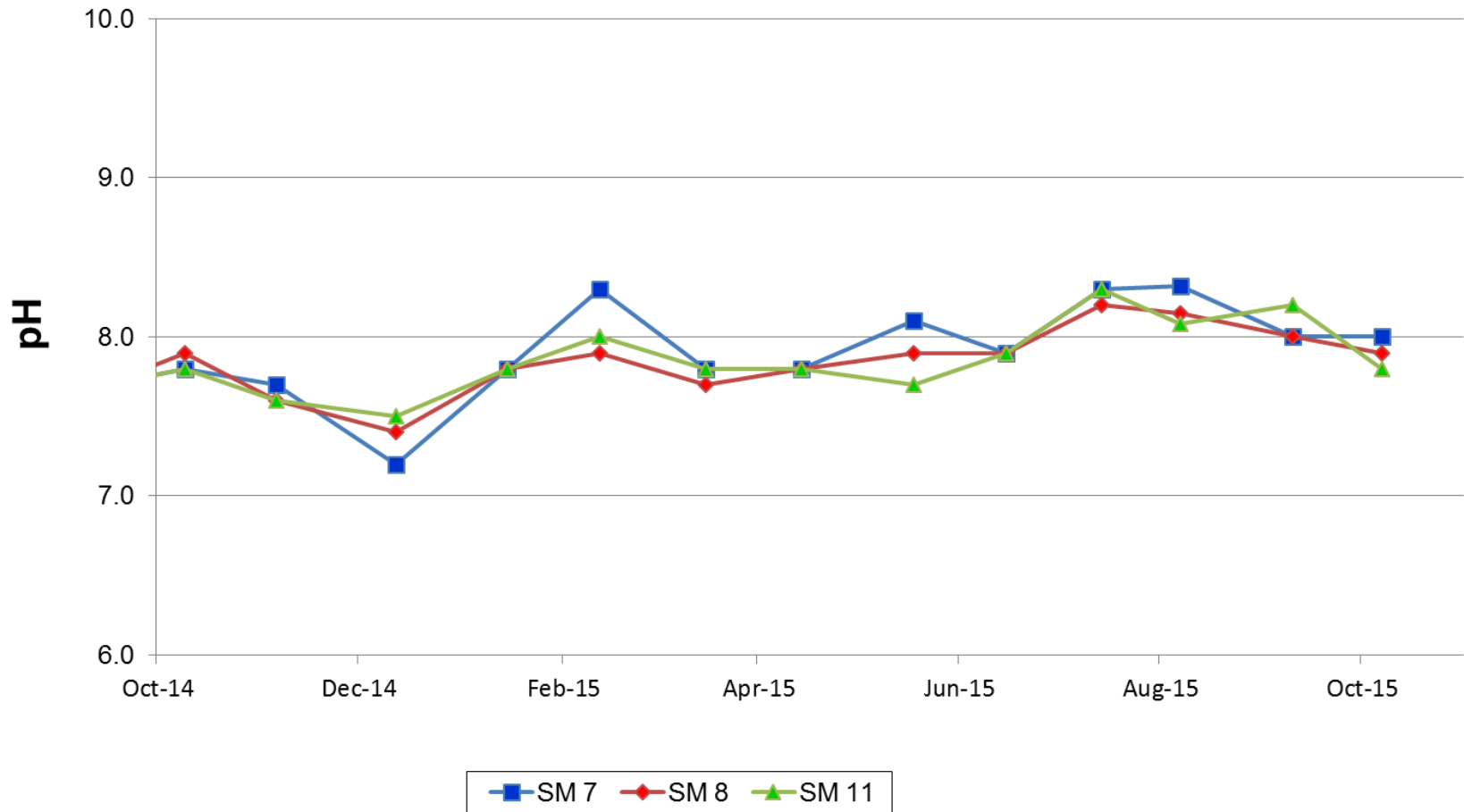
RPS Aquaterra

FIGURE 11
Surface Water Monitoring Network

AUTHOR	HZ	PROJECT NO	SSRE
CHECKED BY	JVDA	REVISION	A
DATE	19/07/2011	DRAWING NO	029e

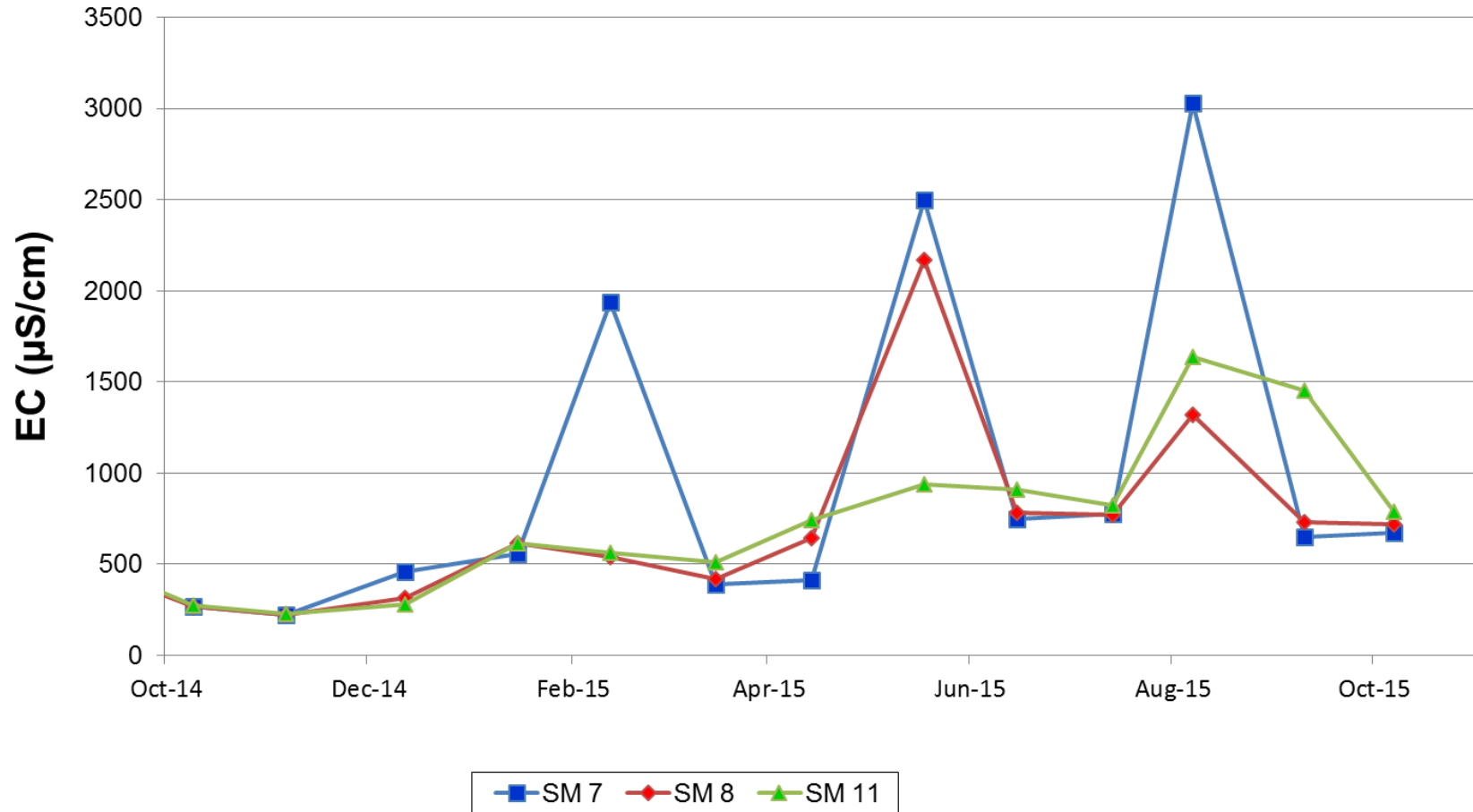
Surface Water Quality – pH

Glennies Creek Monthly pH Levels 2014 - 2015



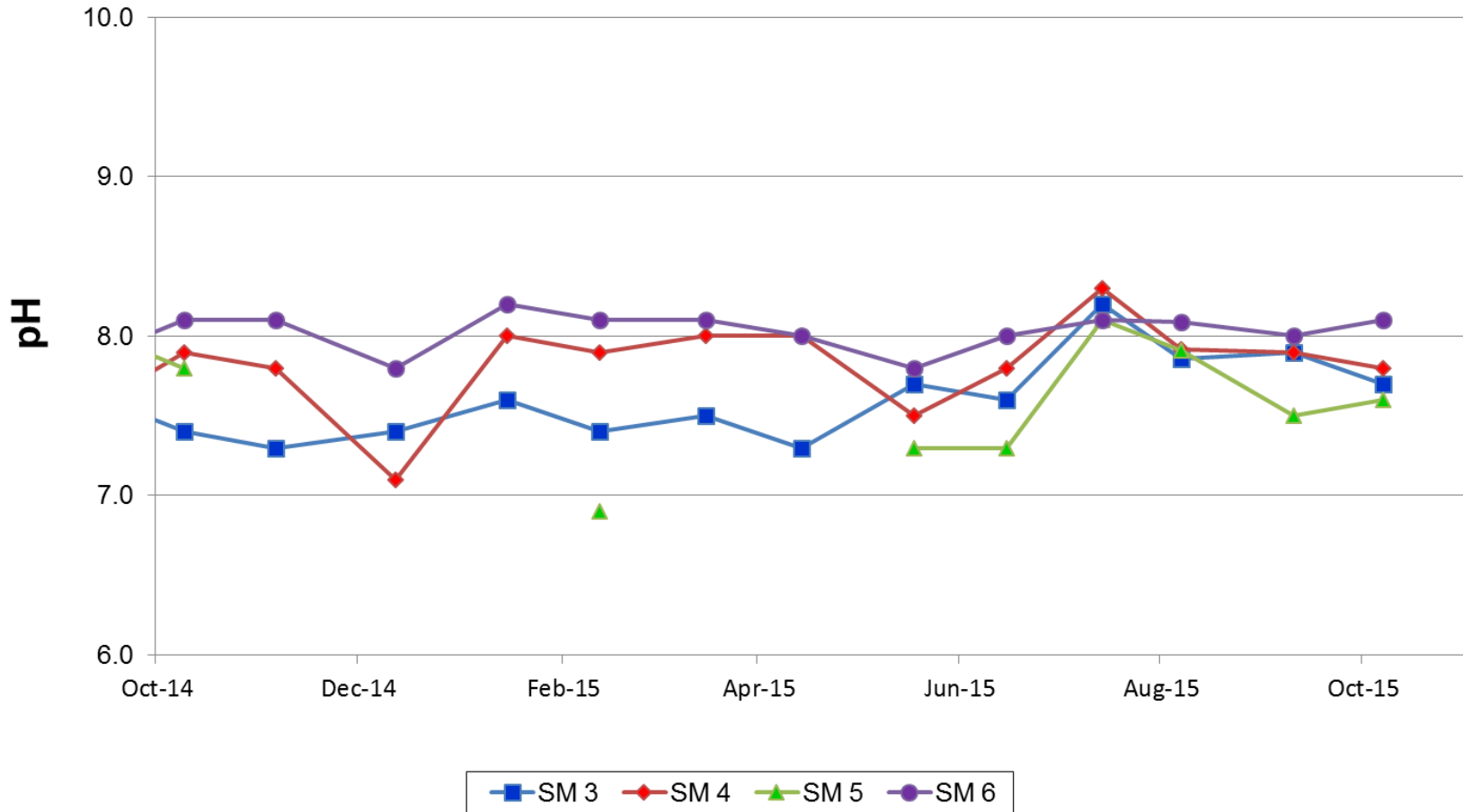
Surface Water Quality – EC

Glennies Creek Monthly Electrical Conductivity Levels 2014 - 2015



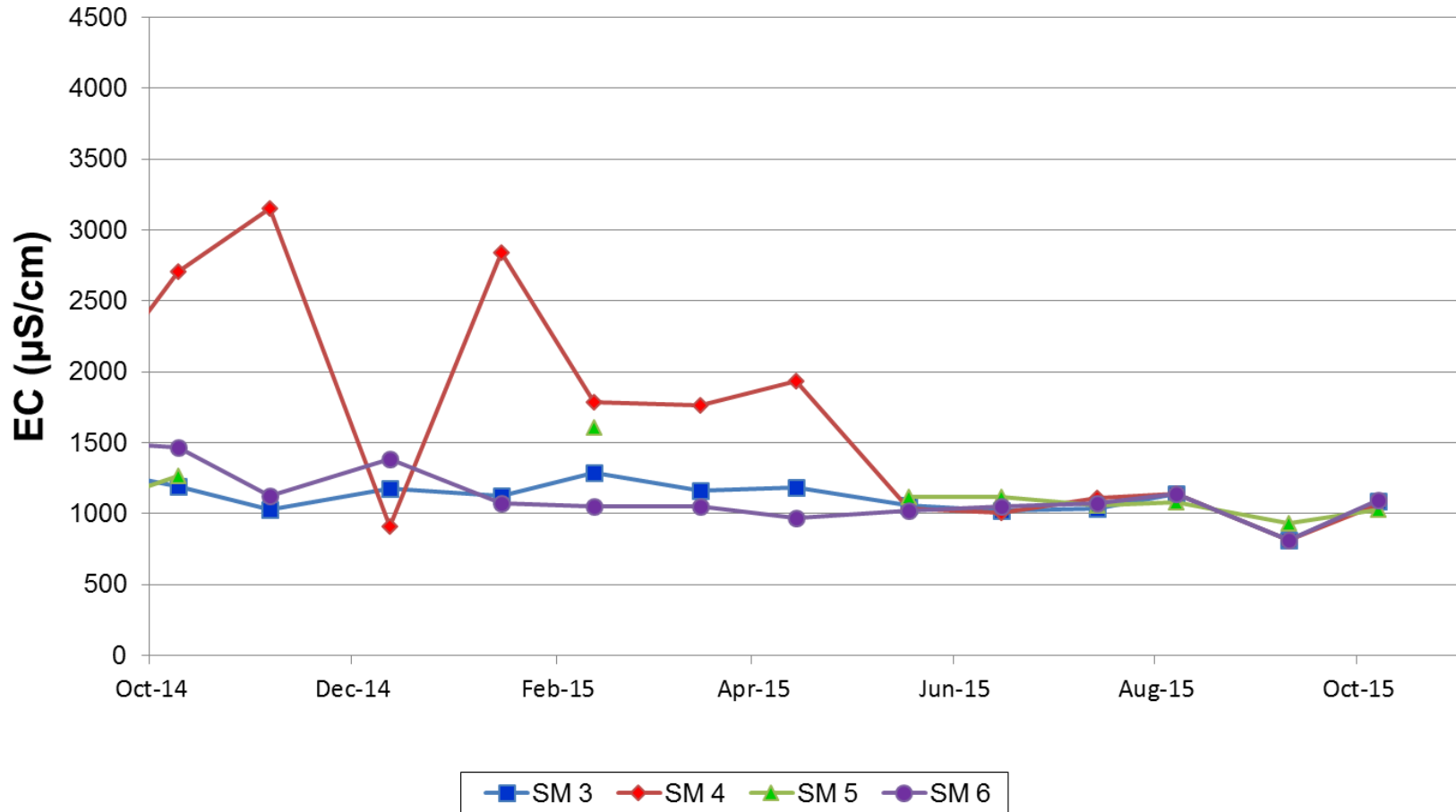
Surface Water Quality – pH

Bowmans Creek Monthly pH Levels 2014 - 2015



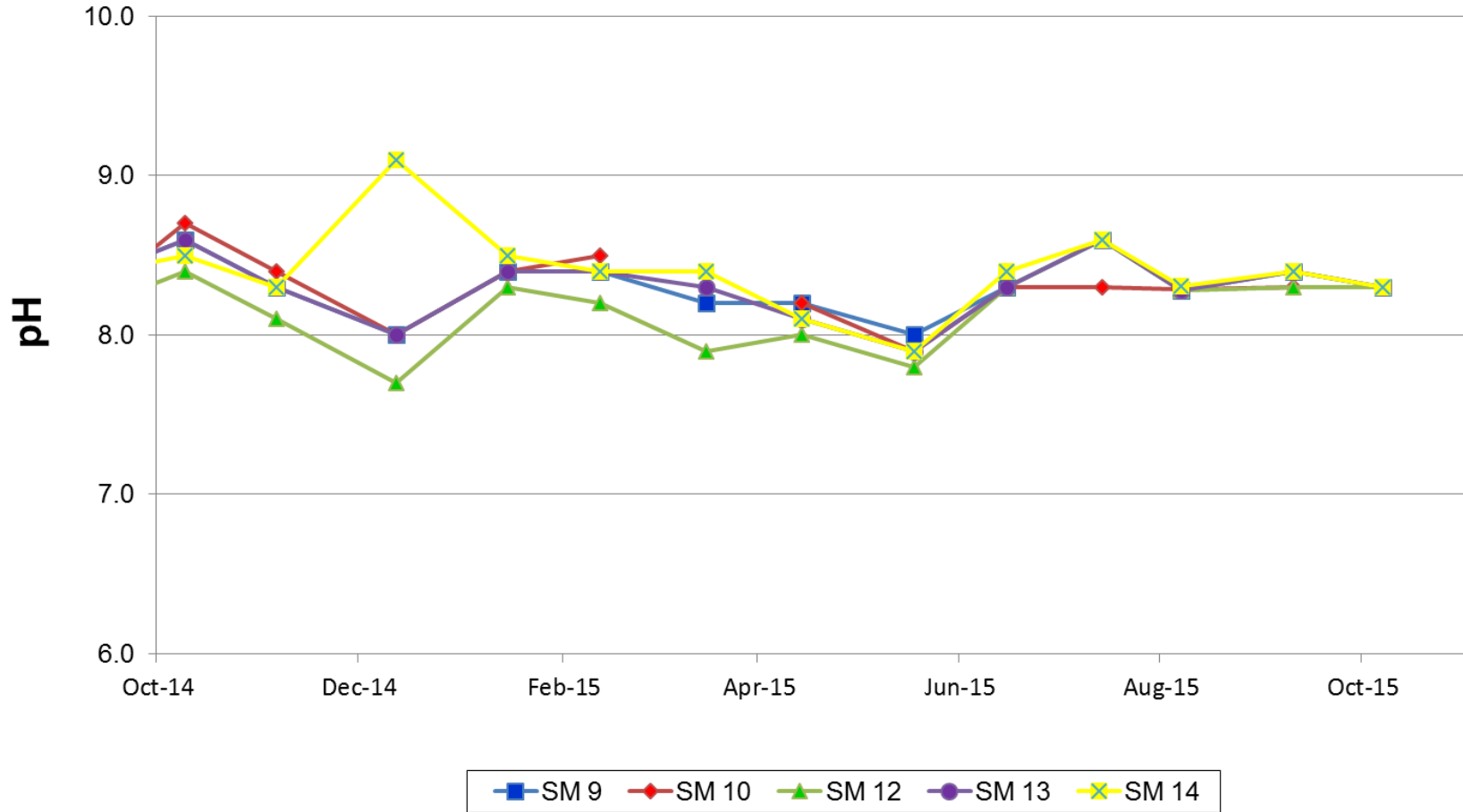
Surface Water Quality – EC

Bowmans Creek Monthly Electrical Conductivity Levels 2014 - 2015



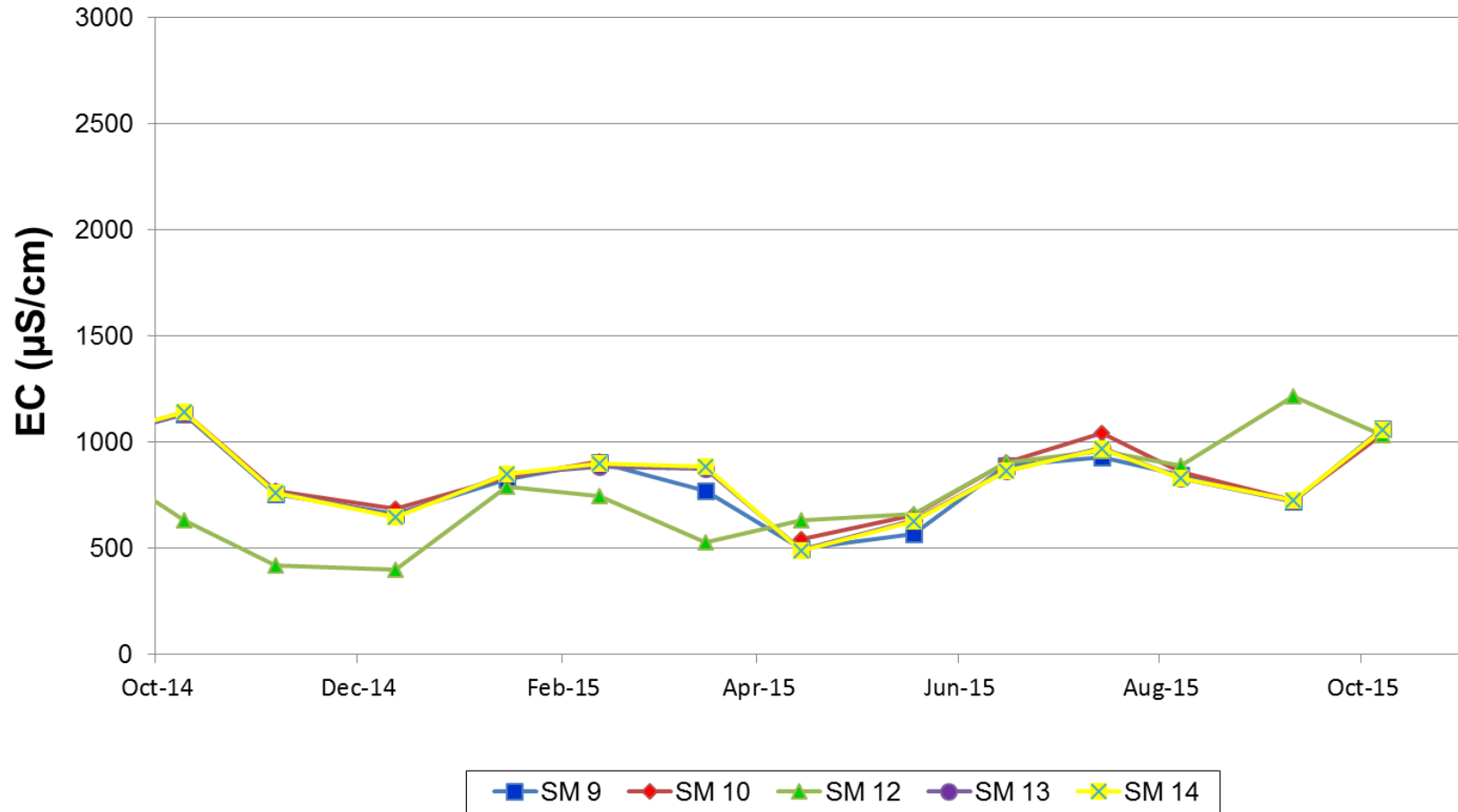
Surface Water Quality – pH

Hunter River Monthly pH Levels 2014 - 2015

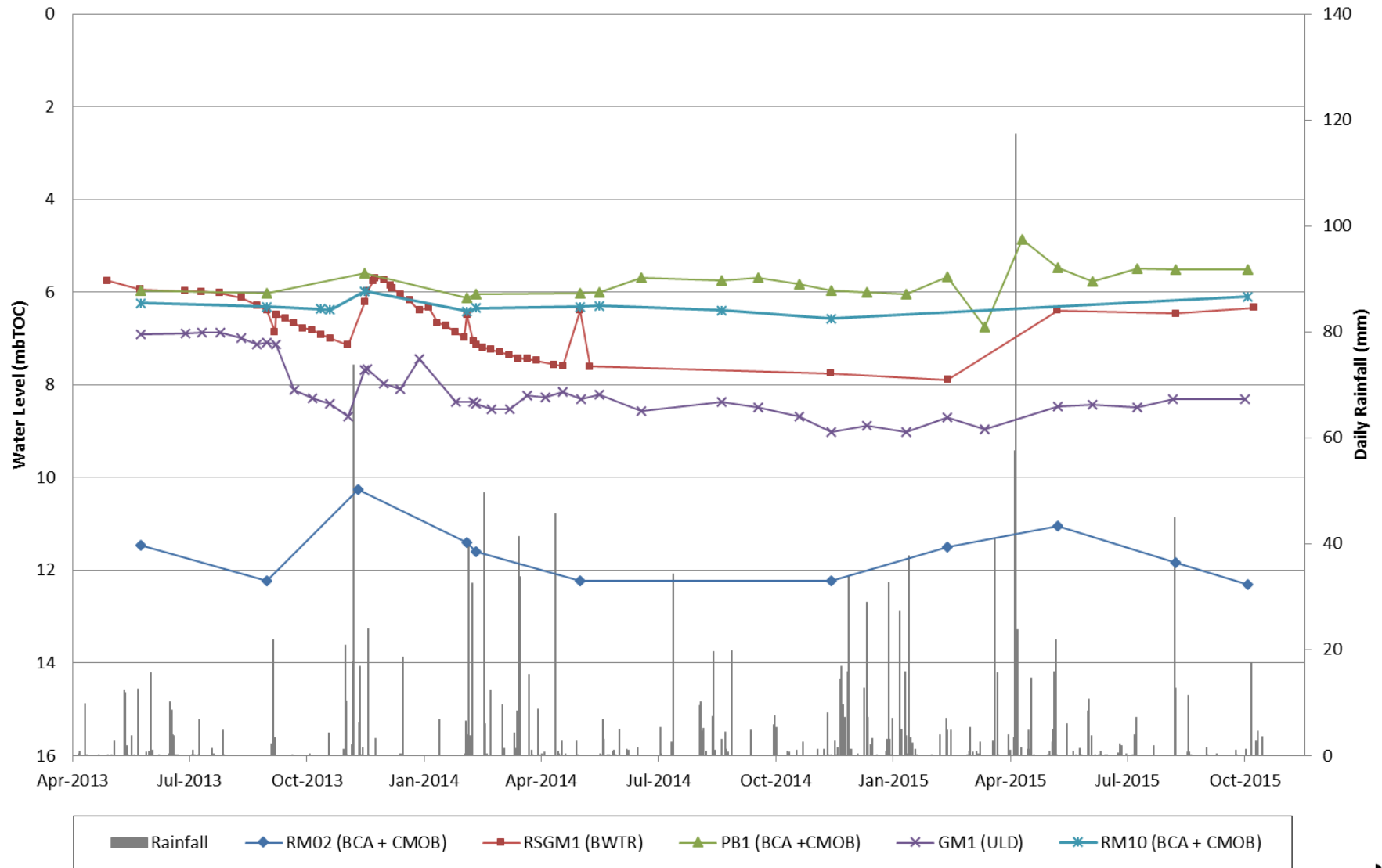


Surface Water Quality – EC

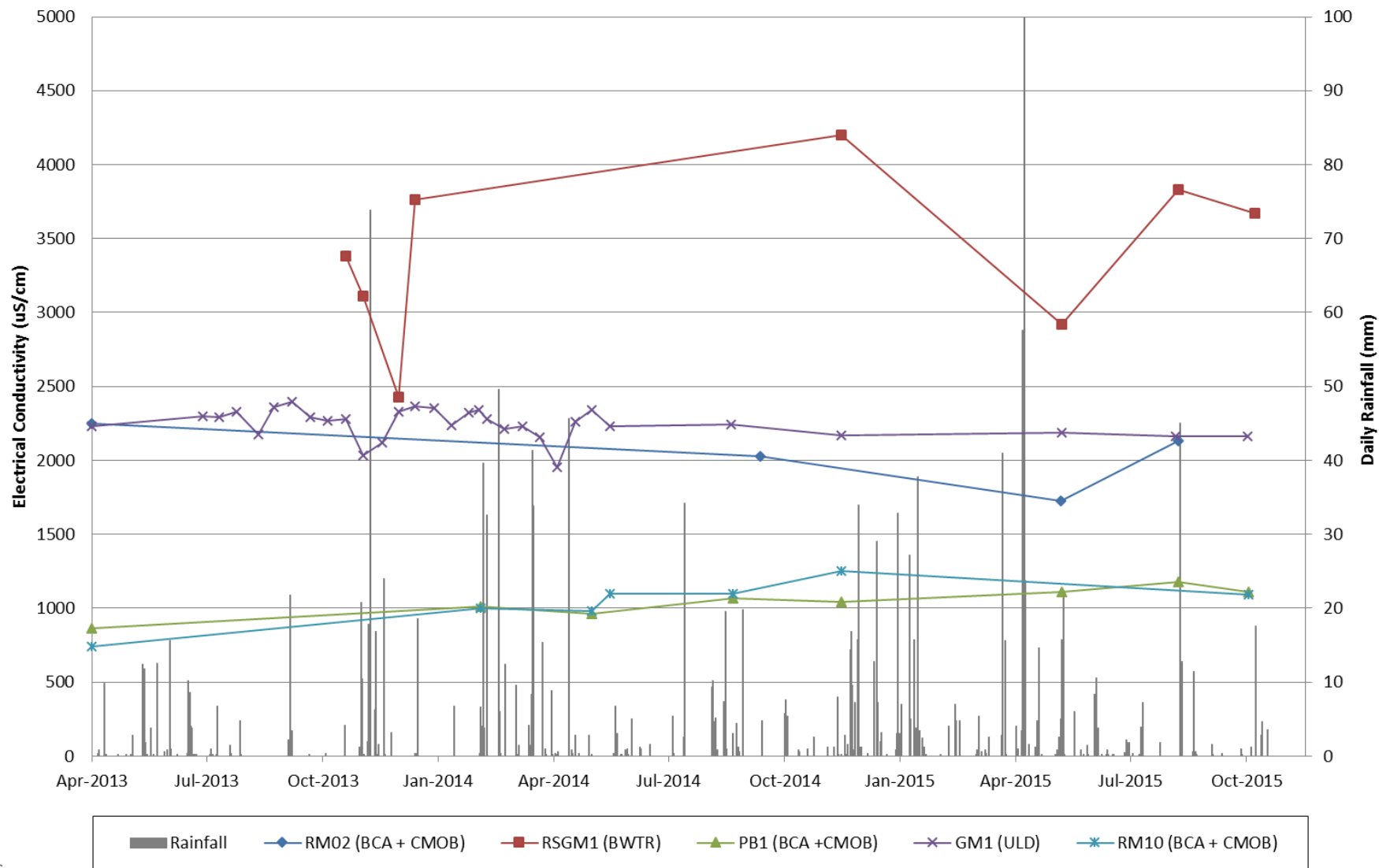
Hunter River Monthly Electrical Conductivity Levels 2014 - 2015



Groundwater – Standing Depth



Groundwater – EC



Noise Monitoring

Attended noise monitoring is conducted Monthly.

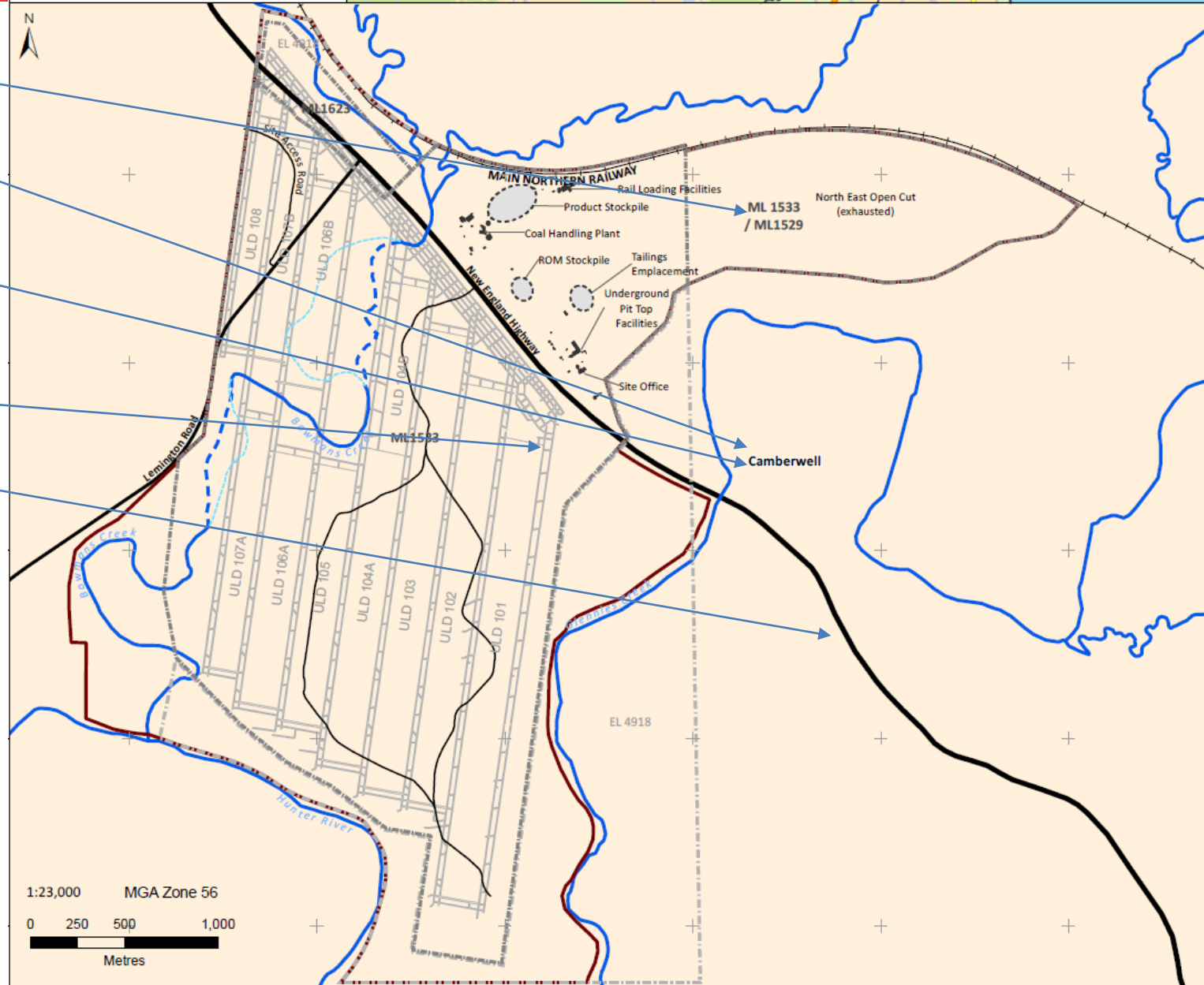
There were no exceedances during the reporting period

Table 1
ACP Noise Monitoring Results – 20 October 2015 – Night

Location	Time	dB(A) Leq	Comments	WS (m/s)/ Direction	Inversion °C/ 100m	ACP Noise Sources
N2	11:38 pm	40	Traffic (39), frogs & insects (31), other mine (24), ACP inaudible	1.7/30	>+3	n/a
N3	11:20 pm	40	Traffic (39), frogs & insects (33), ACP inaudible	2.4/35	>+3	n/a
N4	10:40 pm	42	Frogs & insects (41), traffic (35), other mine (25), ACP inaudible	1.1/56	>+3	n/a

What else is going on?

- Rehabilitation maintenance
- Purchase of RMS Properties in Camberwell
- Wonnarua Mine Rehabilitation Services – 1 Alpha Street
- Interseam staple shaft construction
- New England Tree Screen



Interseam Staple Shafts

- Interseam staple shaft construction have been completed via raised bore drilling methods between the ULD and the ULLD seam.
- The shafts are approximately 30m long and 4-4.5m in diameter.
- The drilling has now been completed and only shot-creting of the shafts remains



Any Questions?