



# Ashton Coal Operations Pty Ltd Community Consultative Committee Presentation – 24 March 2015



# Action List

ITEM	RESPONSIBILITY	PROGRESS UPDATE
<b>Newsletter to be drafted, published and distributed to community – including donations summary, SEOC appeal, UG infrastructure projects and rehabilitation photos</b>	DS	Articles being prepared for the newsletter. A brief bio/profile is required for each CCC Member if possible. Draft to be prepared for next CCC.
<b>Send letter to DPE asking for the endorsed CCC applicant to be approved.</b>	JB	Complete – Approval granted from DPE
<b>Tree Screen at New England Hwy – Optic fibre has been located and the area needs to be archeologically cleared to allow for the tree screens to commence.</b>	DS	SEOC Project start date delayed. Planting plan prepared – see next page. Advised to delay planting until Spring.

# Community Newsletter

- Yancoal appointed Community Relations Coordinator in February
- Standard Yancoal Branding
- Proposal frequency TBD (Autumn 2015)
- 2015 Topics
  - CCC Members
  - Message from Operations Manager
  - Community Support Projects
  - WMRS Nursery establishment
  - Mine planning – extraction plan LW105-107B



# Ashton Statistics

Ashton Coal Statistics					
	2014 Actual	2014 Budget	Jan-15	Feb-15	2015 Budget
ROM (t)	2,771,218	3,196,678	355,977	30,981	567,250 YTD
Product Coal (t)	1,278,770	1,571,908	126,224	39,597	291,996 YTD
Total Coal Sales (t)	1,259,207	1,520,000	98,643	60,374	208,000 YTD
Lost Time Injury (LTI)	10	5	1	1	5
Total Recordable Injuries (TRI's)	25	19	3	3	21
Total Employees (FTE)	203	-	202	200	-

# Community Support Program

- Q1 2015 – Mayoral Scholarship Program
- Community Support Program
  - Established to provide assistance to local initiatives within the Upper Hunter region of Singleton and Camberwell.
  - Wide range of community needs such as education, environment, health, infrastructure projects, arts, leisure and research.
- How the program works
  - Ashton has community support budget
  - Local groups are invited to submit applications throughout the year, with applications closing twice a year
  - Group consisting of Ashton Coal representatives and selected community representatives will access applications
- Application forms to be made available on Ashton website

# Current Operations / Projects

- ACOL is approximately 80% through LW103 in the Upper Liddell Seam. The LW suffered significant delays due to stone intrusions and seam thinning resulting in the loss of ~6 weeks production.
- South East Open Cut – no further movement
- Upper Lower Liddell Drifts (ULLD) – currently mining pit bottom in the ULLD seam. Completion approx. May 2015.



# Exploration Activities

No exploration was conducted in EL5860 or EL4918.



# Approvals Update

As mining at ACOL progresses additional approvals are required to continue operations.

Recent Approval determinations include:

- First workings approval for North West Mains and LW106-107B Gateroads
- Dams Safety Committee – First workings Approval for Void 5 Ash Dam

Future approvals to be lodged include:

- Extraction Plan (EP) for LW 105-107 in the Upper Liddell Seam.

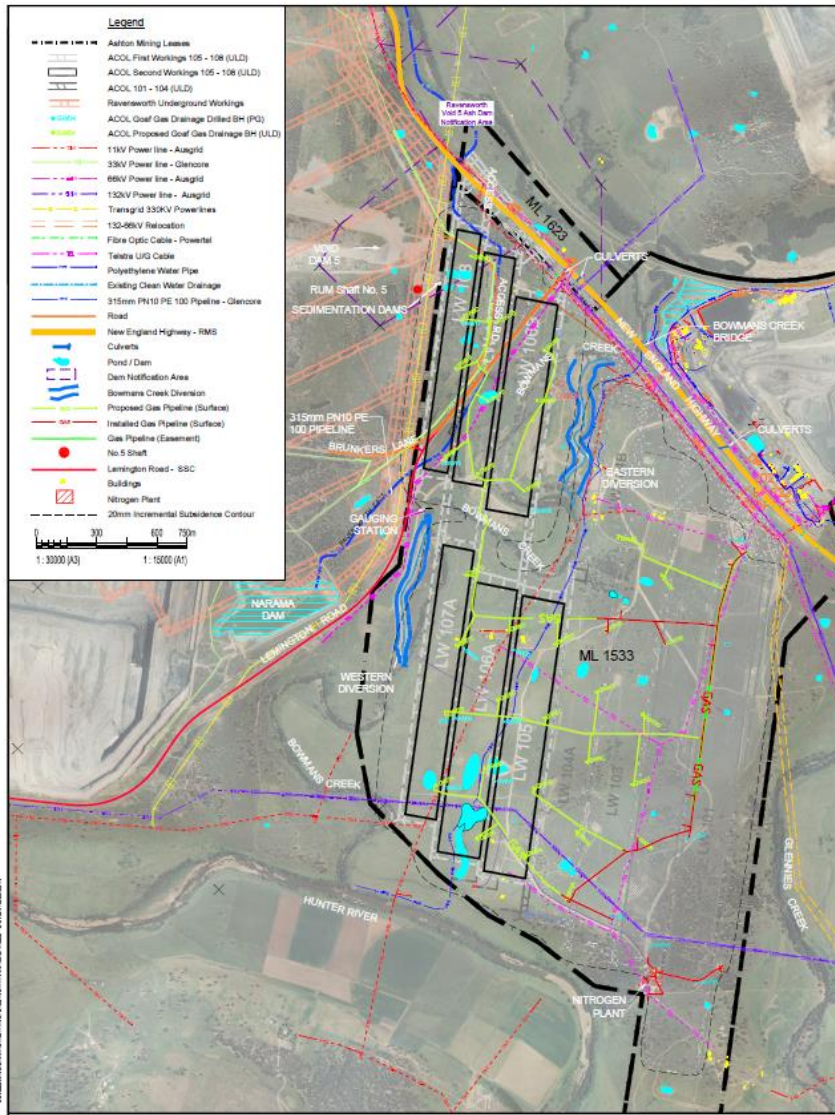




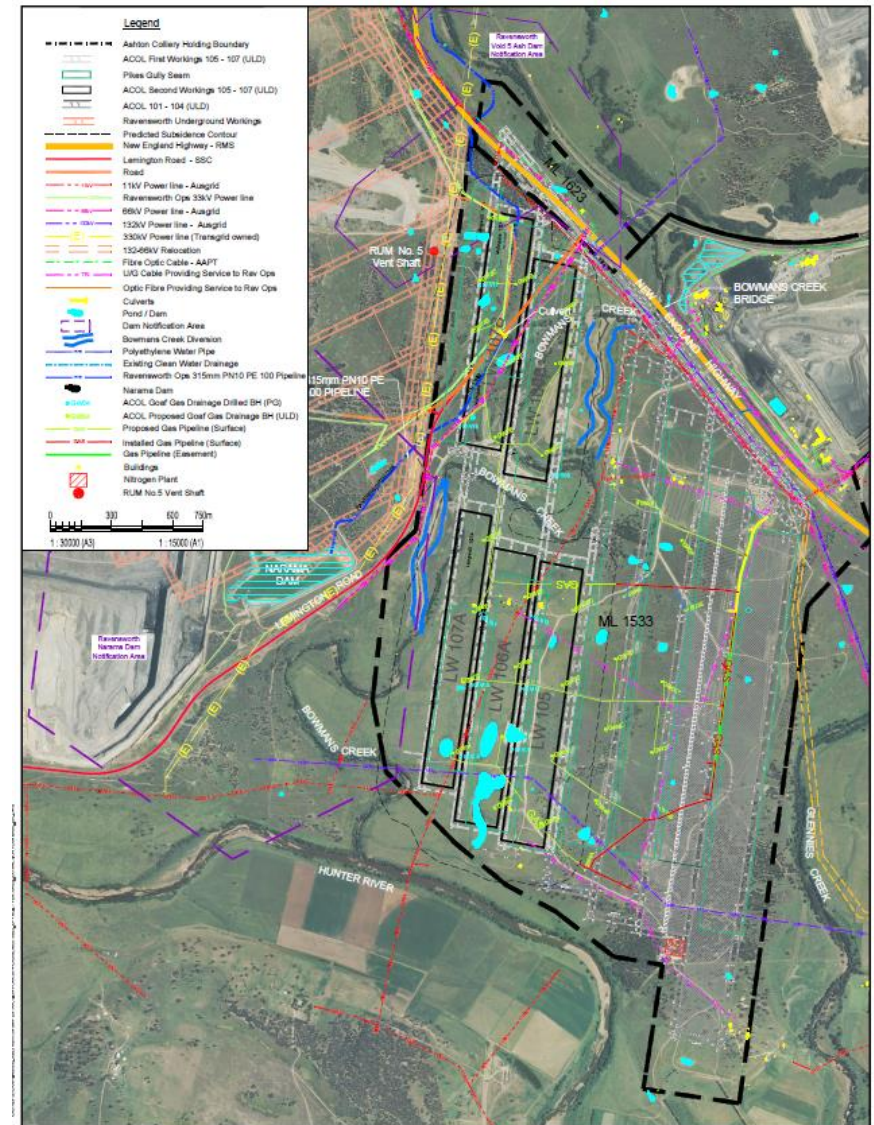
- ACOL is in the process of preparing an Extraction Plan covering LW 105 to 107 in the ULD Seam.
- ACOL have proposed a mine plan which remains consistent with DA 309-11-2001-i however differs slightly from the previously assessed layout.
- The layout is designed to optimise underground mining efficiencies with an offset geometry to the PG Seam.
- LW 108 will no longer be mined, LW 107B has been widened and LW 107 A has been extended to the south.

# Comparison of Previous vs Proposed Layout

## Previous Layout (LW105-108)



## Proposed Layout (LW 105-107)



- Key features in the EP area include:
  - Lemington Road
  - New England Highway
  - Bowman's Creek Diversion
  - Power infrastructure
  - Unsealed access roads
  - Water pipelines (Ravensworth – Mt Owen)
  - Easements for power and gas pipelines (no existing pipeline)
  - NOW Gauging Station
  - Ravensworth Underground Mine

- Management measures and controls for subsidence impacts include:
  - Pre, during and post subsidence monitoring
  - Groundwater monitoring
  - Visual inspections
  - Onsite road maintenance crew
  - Signage
  - Regular reporting and incident notification protocols
  - Operational checks such as pressure testing and cable integrity testing

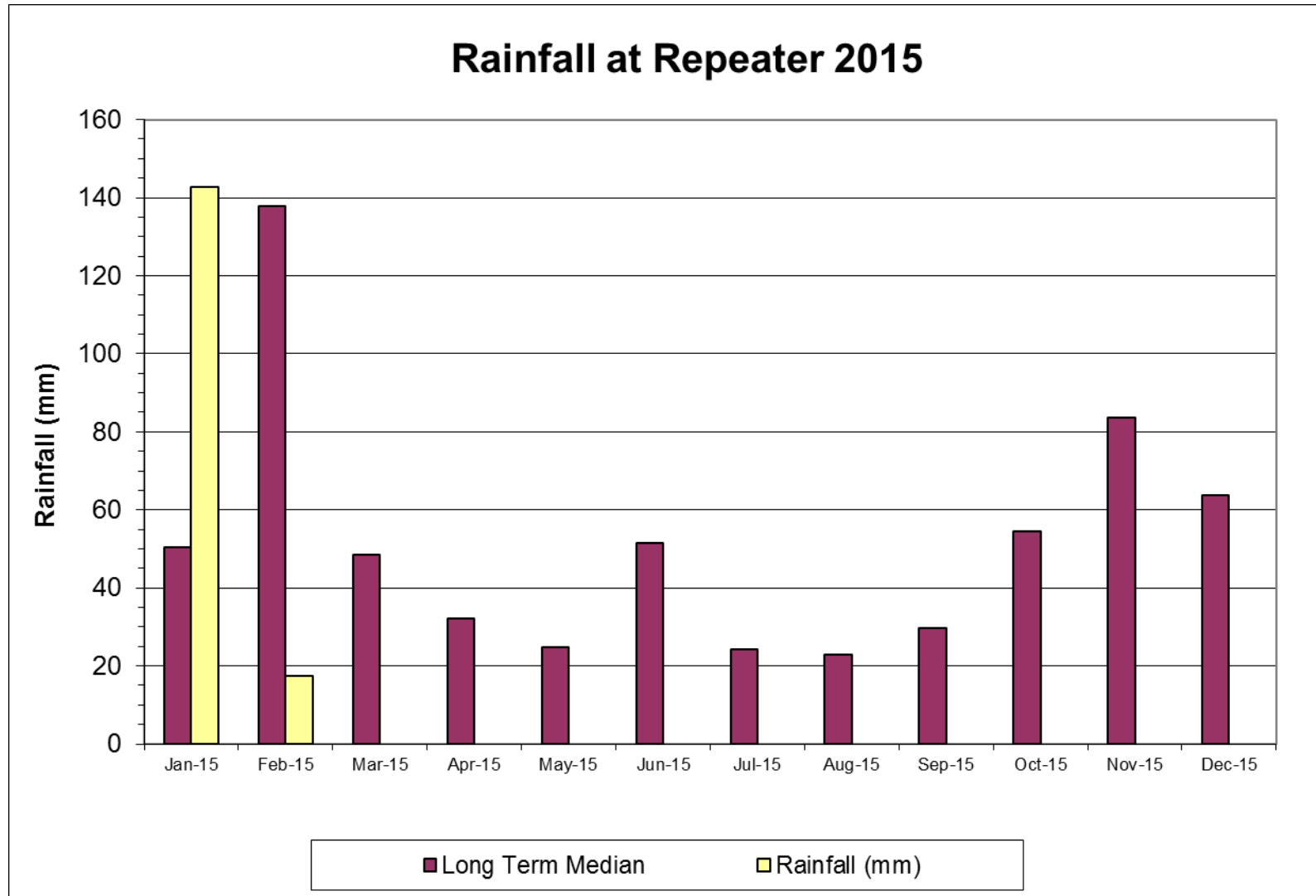
- Should you have any questions or comments please don't hesitate to contact me at:

James Barben  
Environment and Community Coordinator  
[James.barben@yancoal.com.au](mailto:James.barben@yancoal.com.au)  
02 65 709 102  
0409 526 374

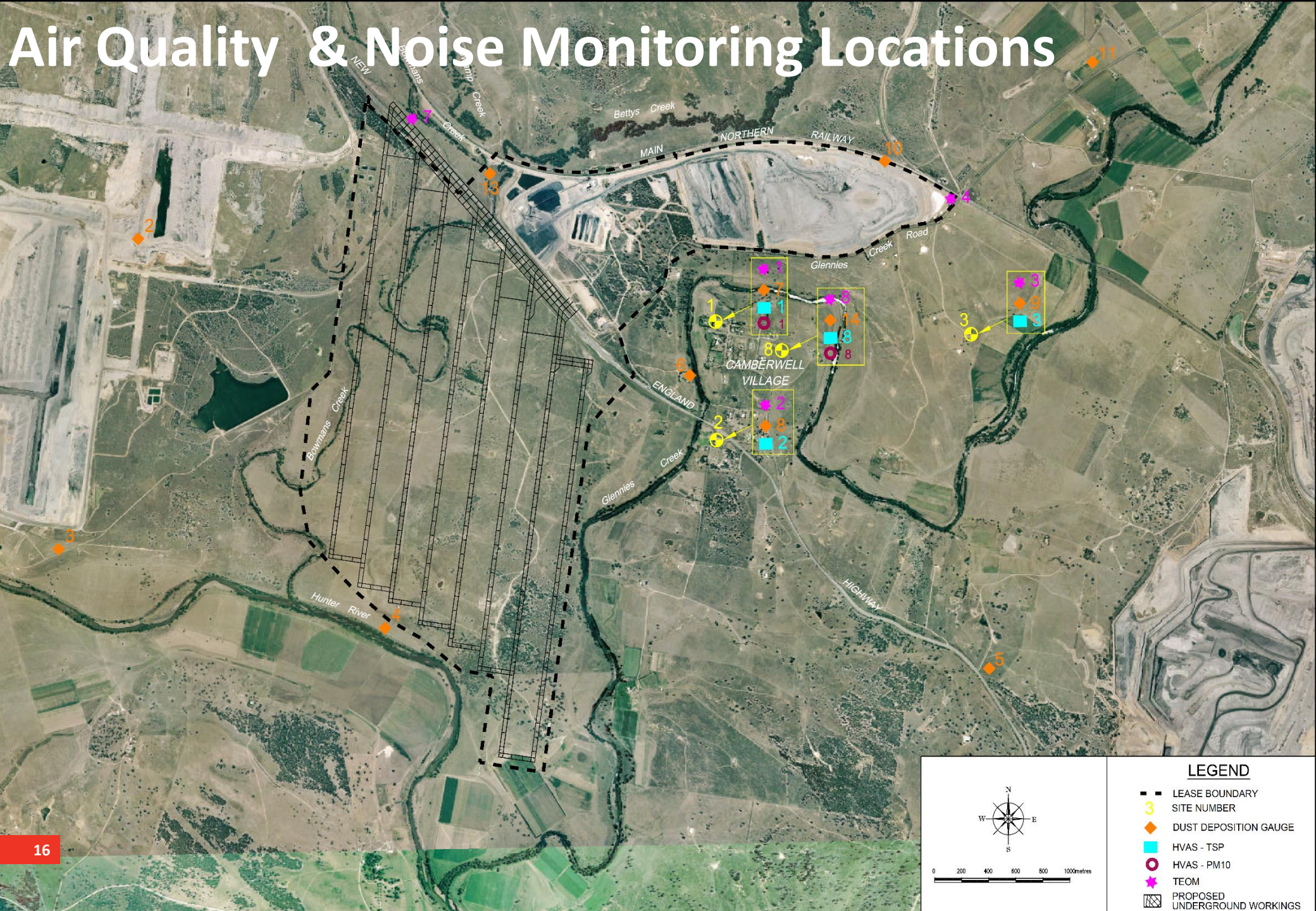
# Environment Monitoring Data

- The following slides present environmental monitoring data for the reporting period
- Meteorological
  - Rainfall
- Air Quality
  - Depositional Dust Gauges – Total suspended dust
  - PM10 – Tapered Element Oscillating Microbalance (TEOM)
- Surface Water – Glennies Ck, Bowmans Ck and Hunter River
- Groundwater – various aquifers
- Noise

# Rainfall

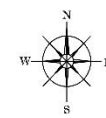


# Air Quality & Noise Monitoring Locations



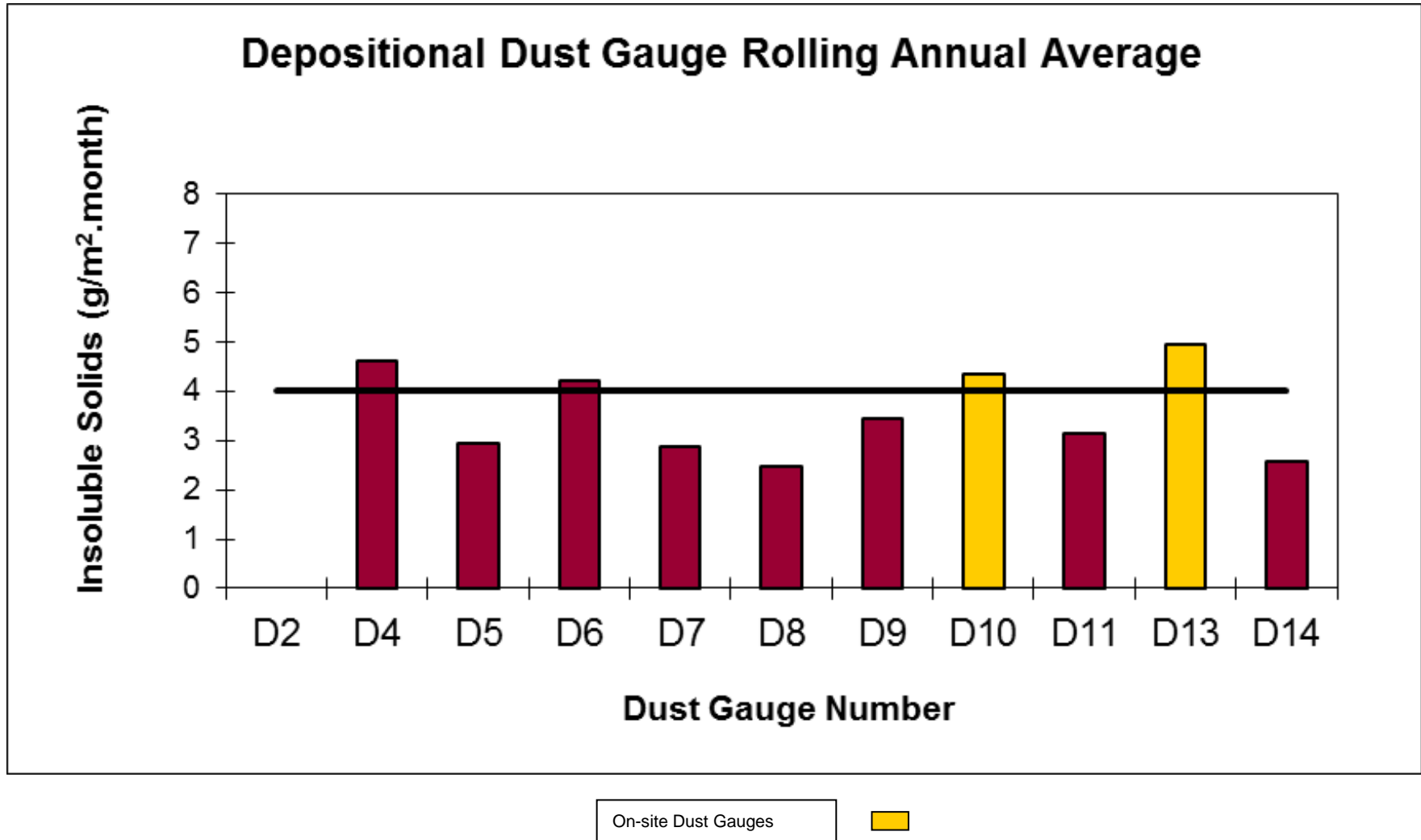
## LEGEND

- LEASE BOUNDARY
- 3 SITE NUMBER
- ◆ DUST DEPOSITION GAUGE
- HVAS - TSP
- HVAS - PM10
- ★ TEOM
- ▨ PROPOSED UNDERGROUND WORKINGS



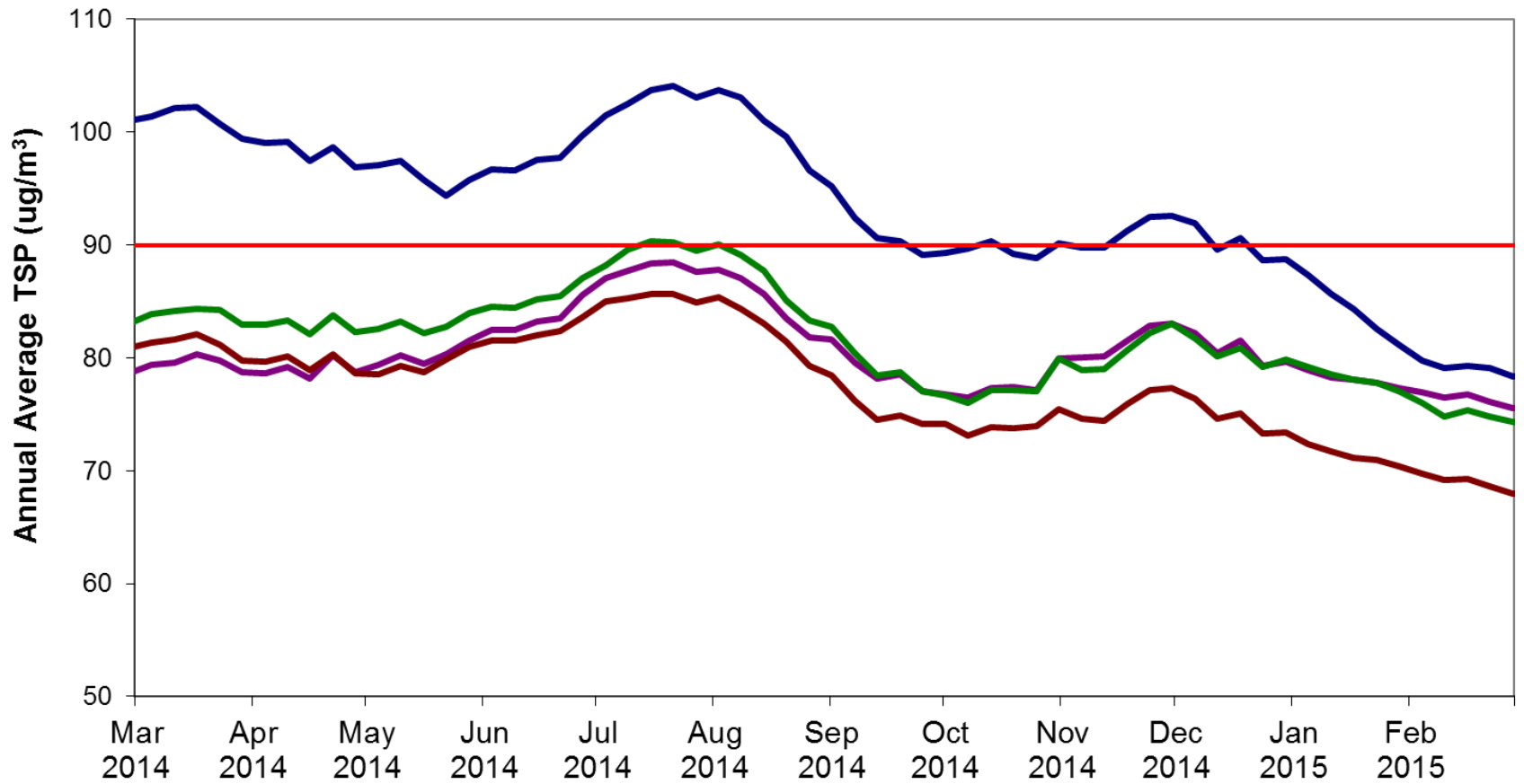


# Depositional Dust



# Total Suspended Dust

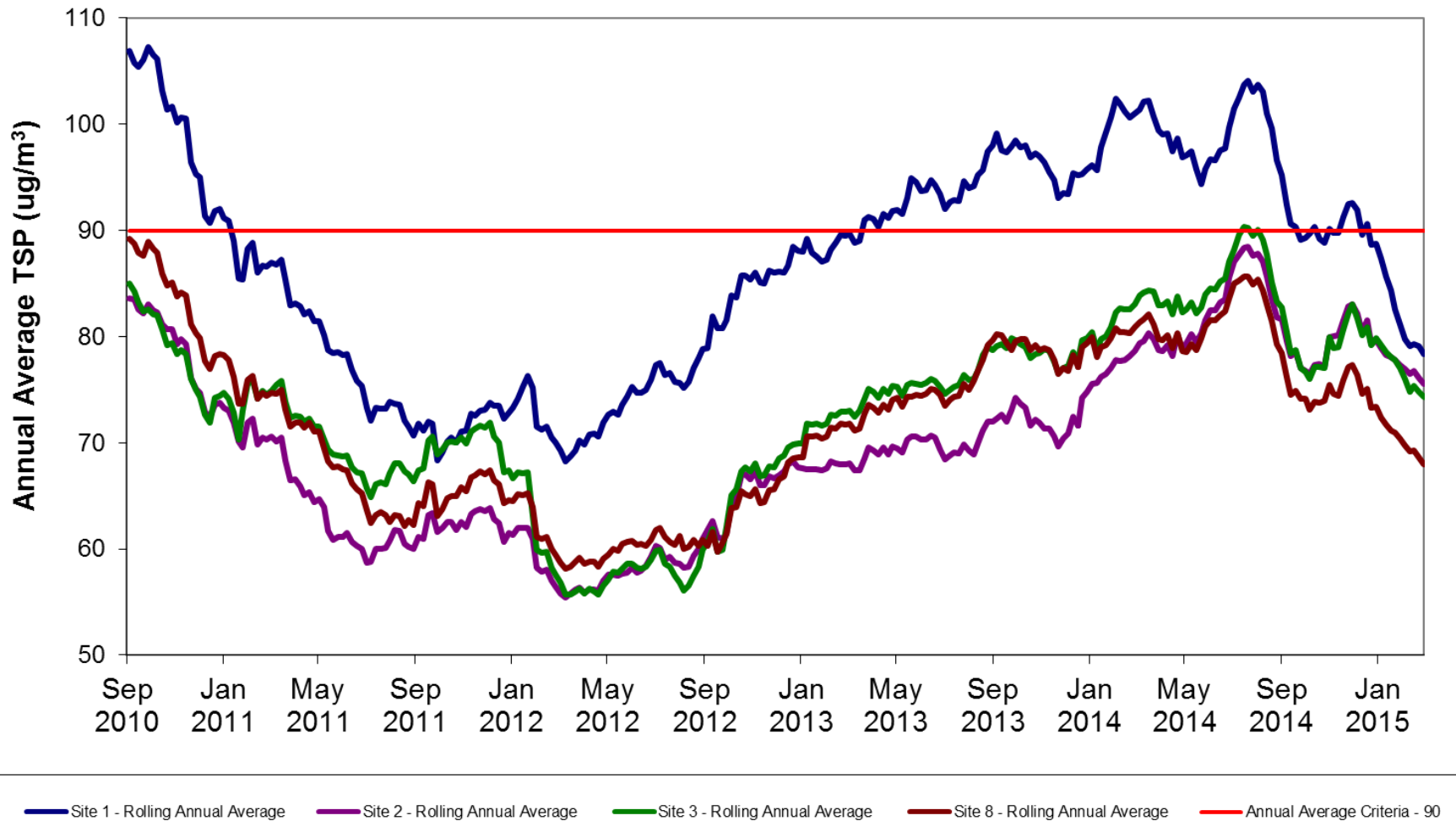
## HVAS TSP Rolling Annual Average HVAS TSP All Sites



Site 1 - Rolling Annual Average Site 2 - Rolling Annual Average Site 3 - Rolling Annual Average Site 8 - Rolling Annual Average Annual Average Criteria - 90

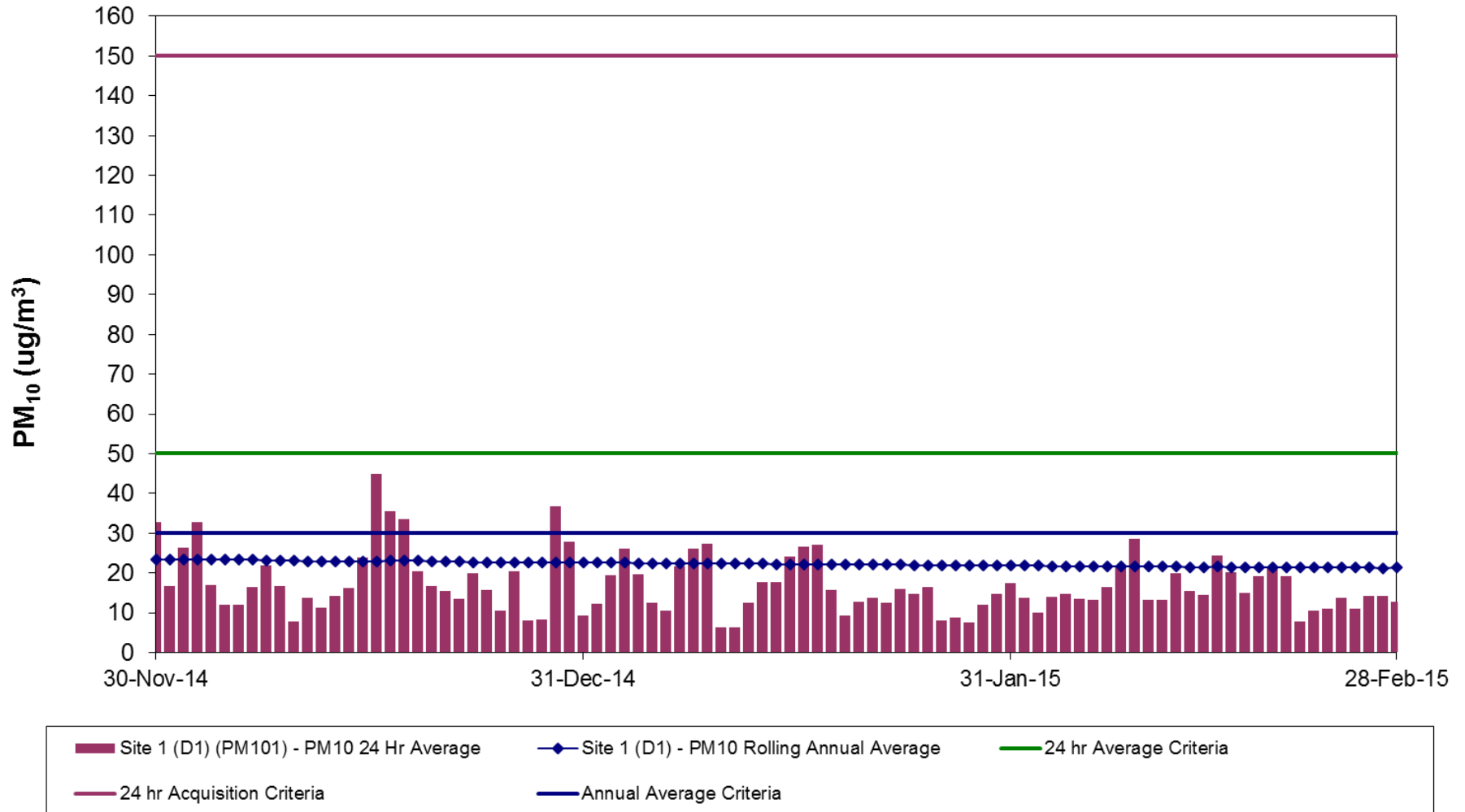
# Total Suspended Dust

## HVAS TSP Rolling Annual Average HVAS TSP All Sites

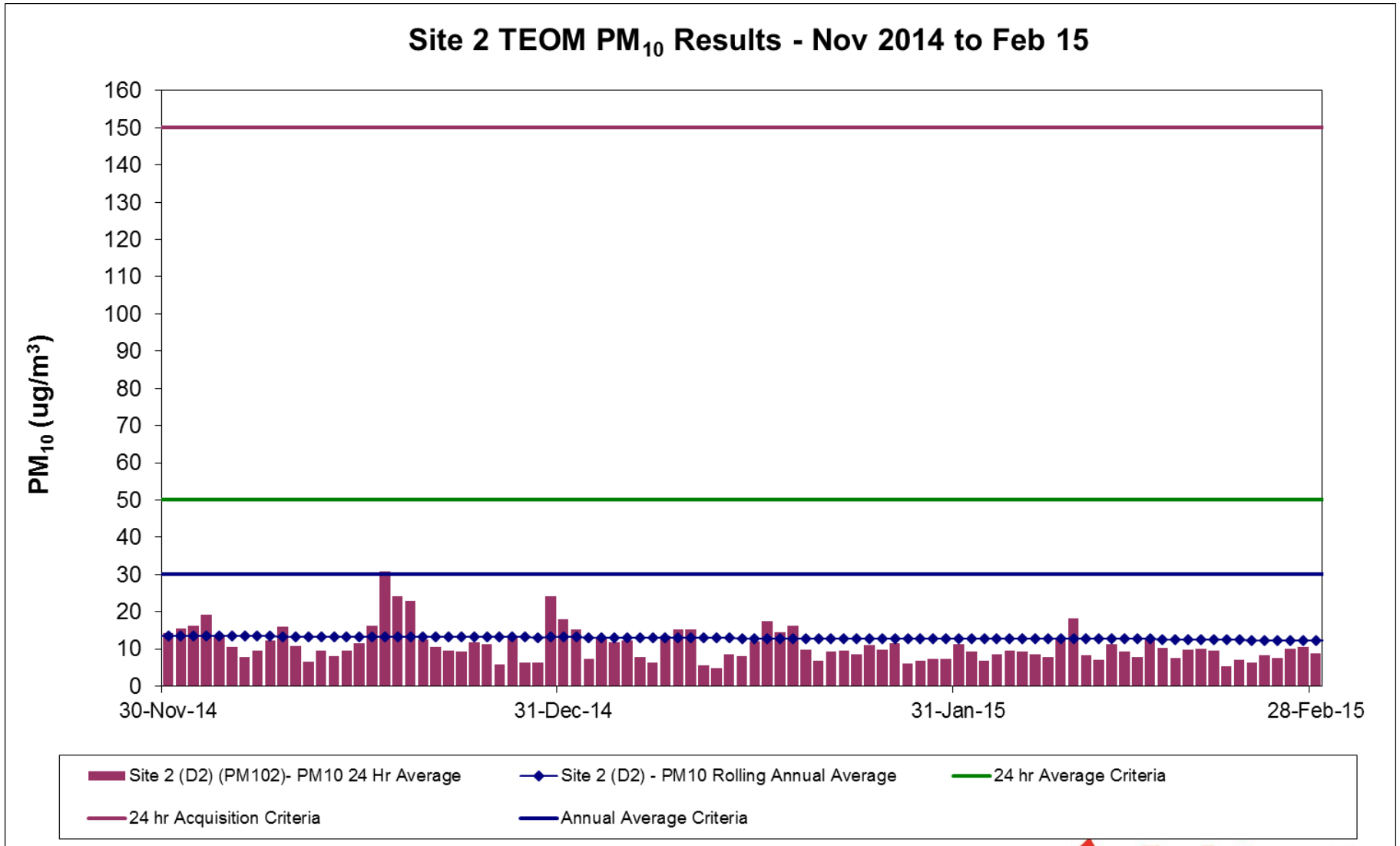


# PM<sub>10</sub> Dust – Site 1

## Site 1 TEOM PM<sub>10</sub> Results - Nov 2014 to Feb 15

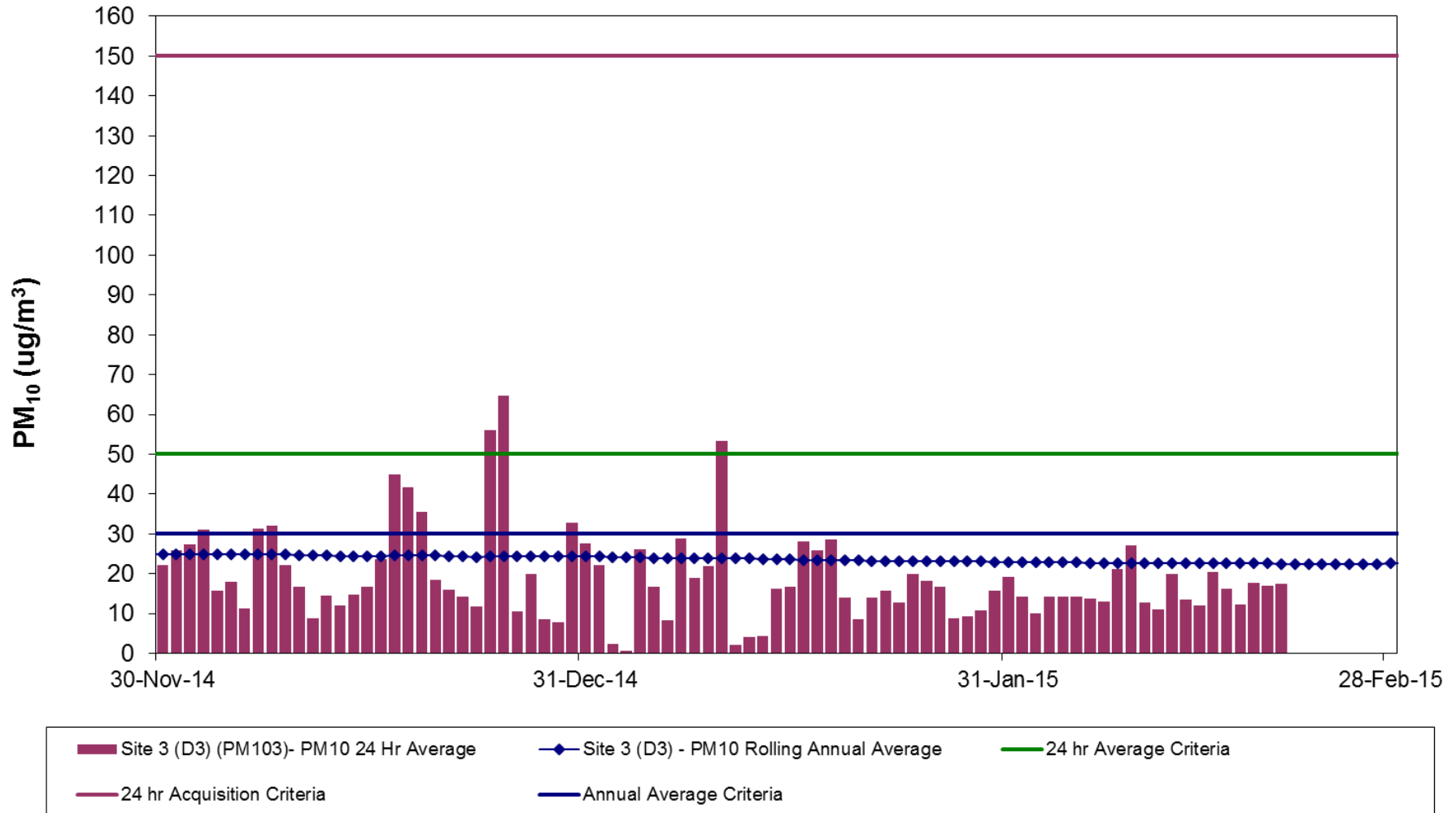


# PM<sub>10</sub> Dust – Site 2



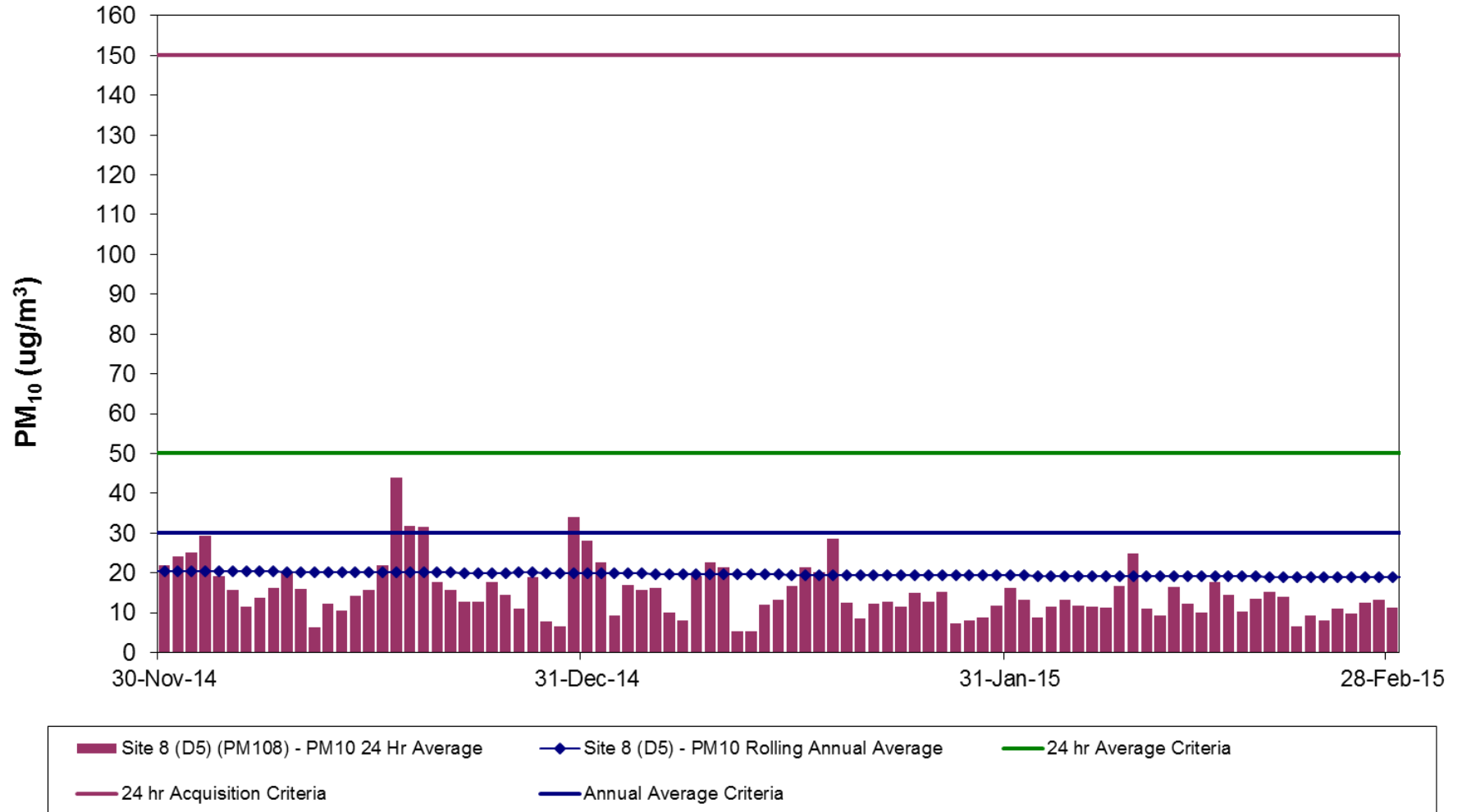
# PM<sub>10</sub> Dust – Site 3

## Site 3 TEOM PM<sub>10</sub> Results - Nov 2014 to Feb 15

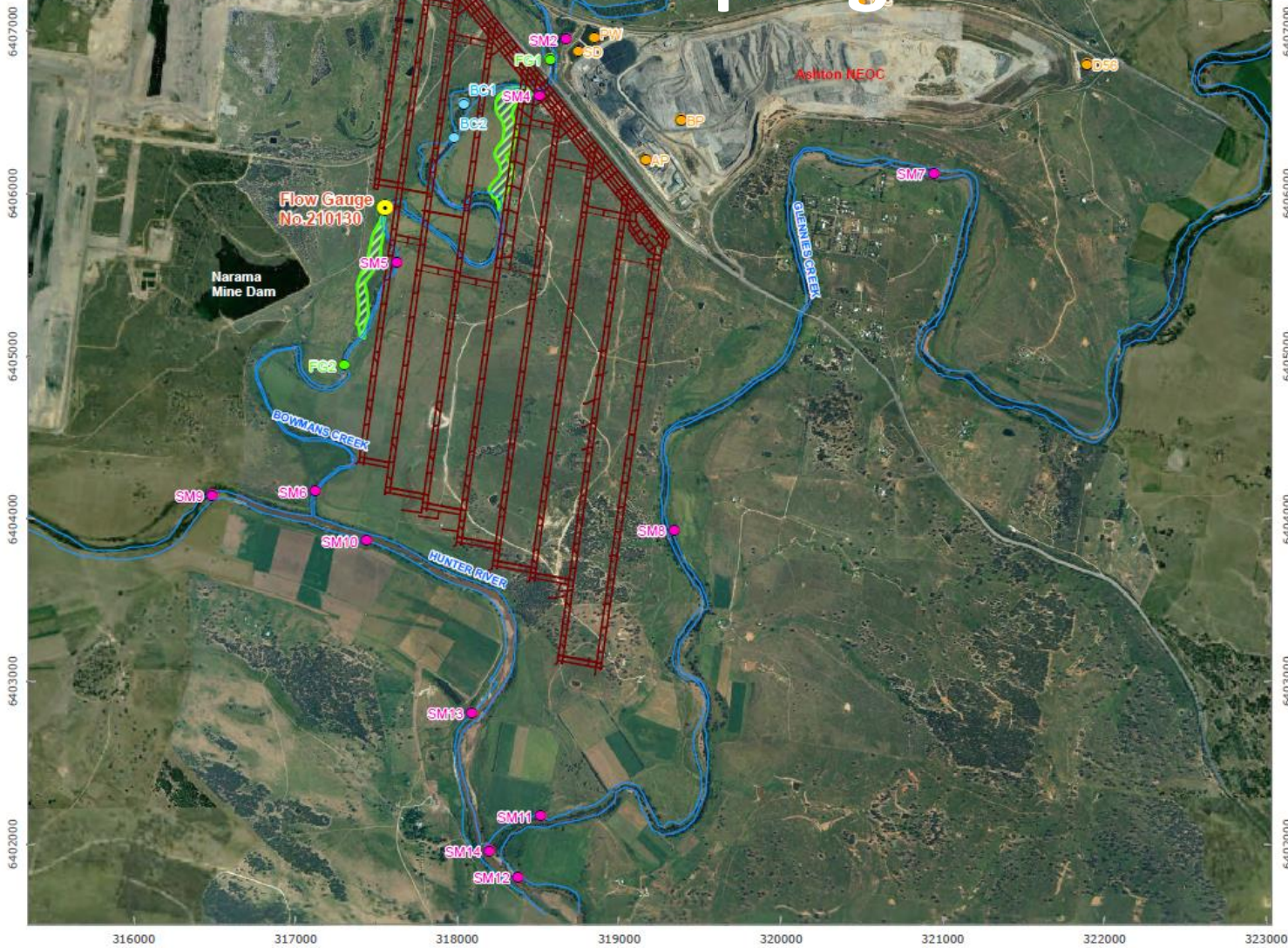


# PM<sub>10</sub> Dust – Site 8

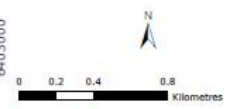
## Site 8 TEOM PM<sub>10</sub> Results - Aug to Nov 2014



# Surface Water Sampling Locations



- LEGEND**
- Surface Water Monitoring Location
  - Onsite Water Management Monitoring Location
  - Bowmans Creek Monitoring Location
  - ACOL Flow Gauge
  - NSW Office of Water Gauge
  - Upper Liddell Mine Plan
  - Creeks or River
  - Diversion Footprint



**RPS Aquaterra**

**FIGURE 11**

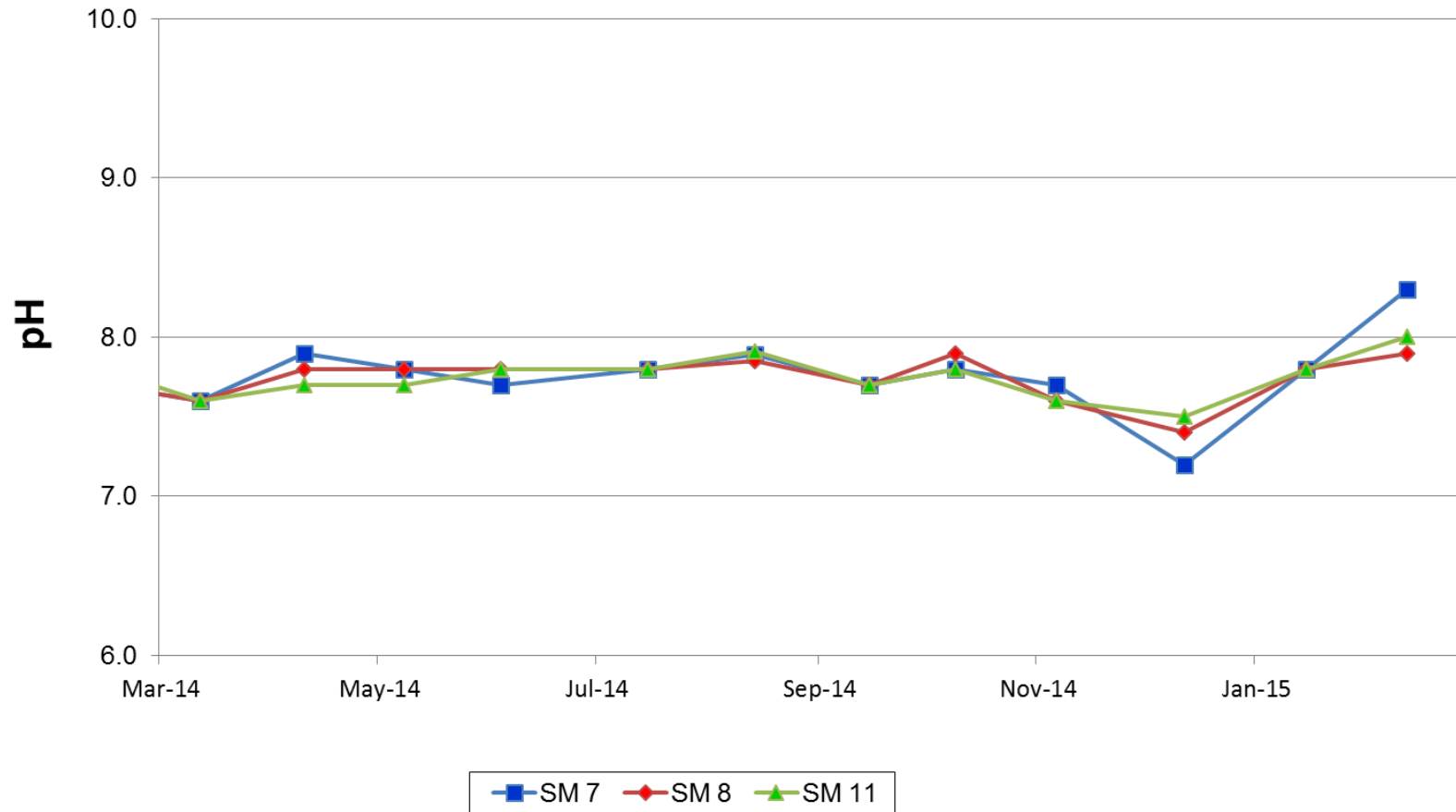
**Surface Water Monitoring Network**

AUTHOR	HZ	PROJECT NO	SSRE
CHECKED BY	JVDA	REVISION	A
DATE	19/07/2011	DRAWING NO	029e



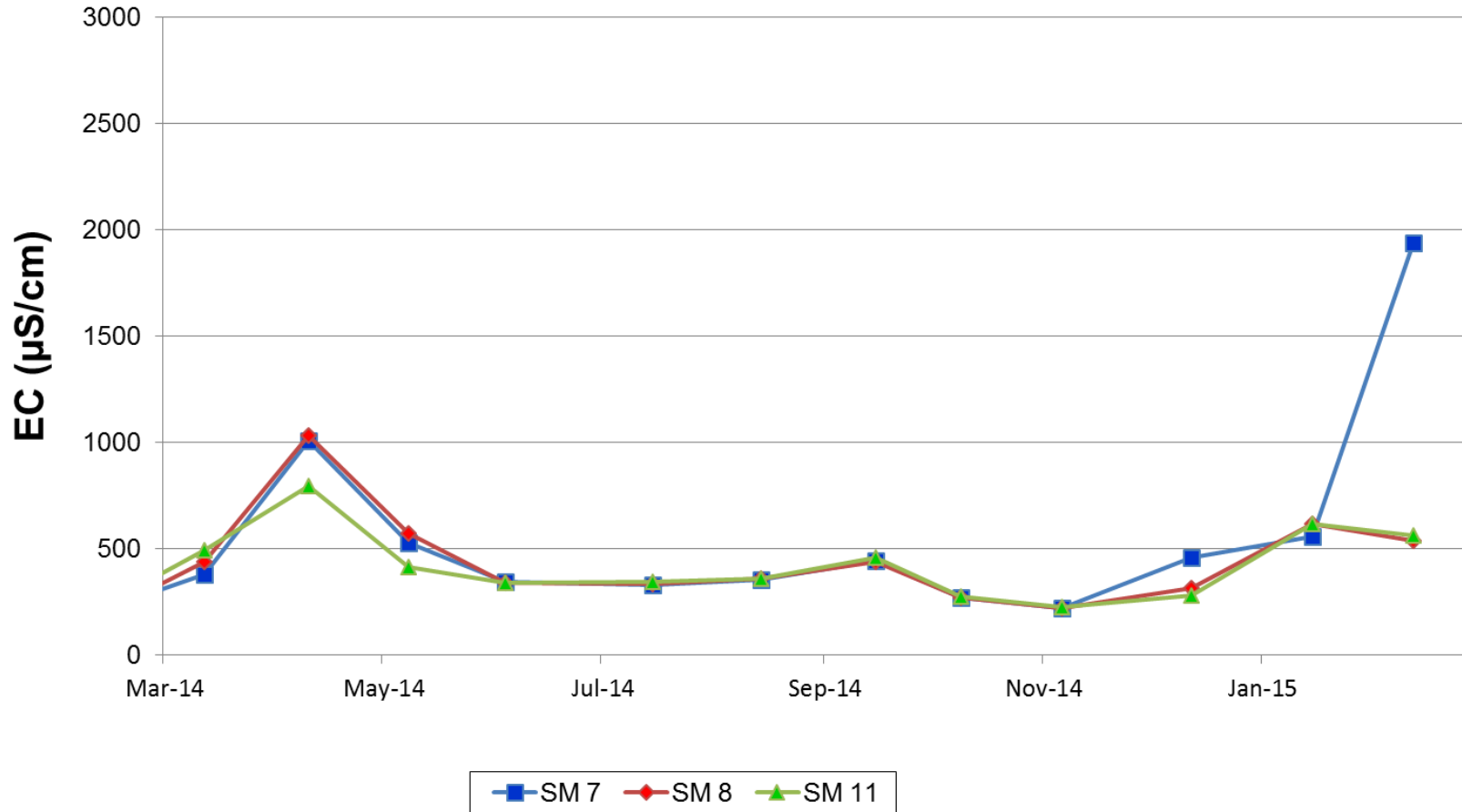
# Surface Water Quality – pH

Glennies Creek Monthly pH Levels  
2014 - 2015



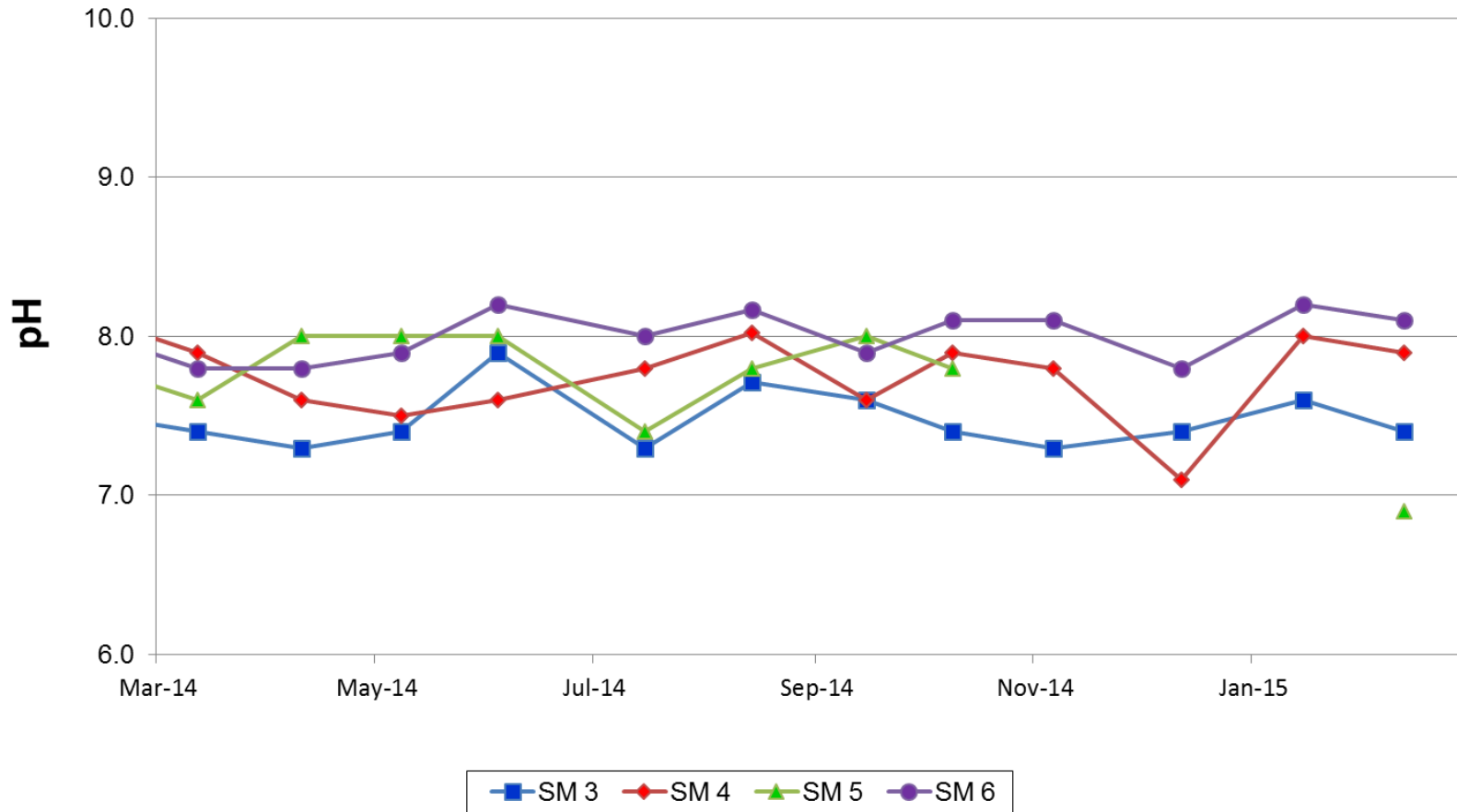
# Surface Water Quality – EC

## Glennies Creek Monthly Electrical Conductivity Levels 2014 - 2015



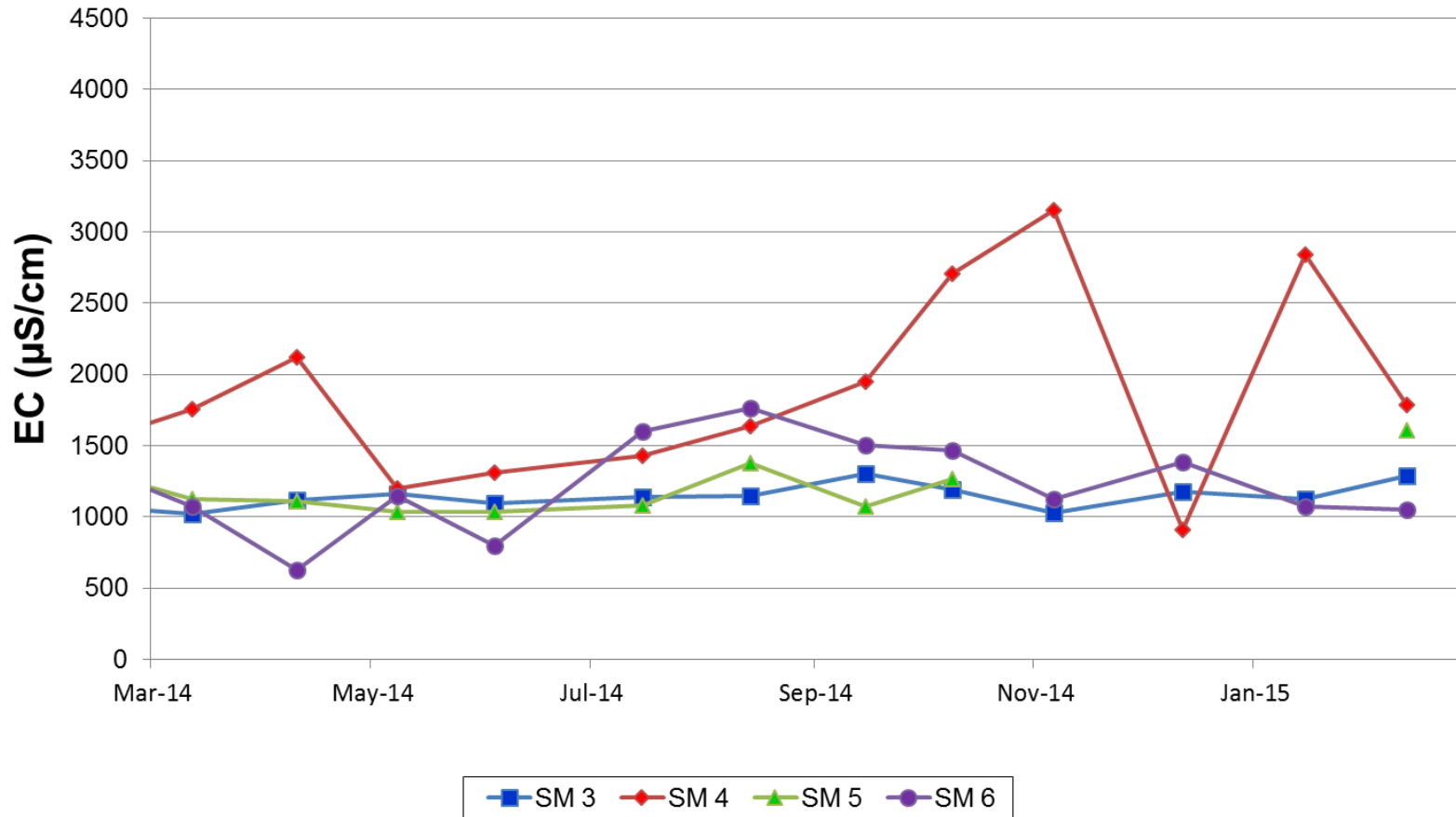
# Surface Water Quality – pH

## Bowmans Creek Monthly pH Levels 2014 - 2015

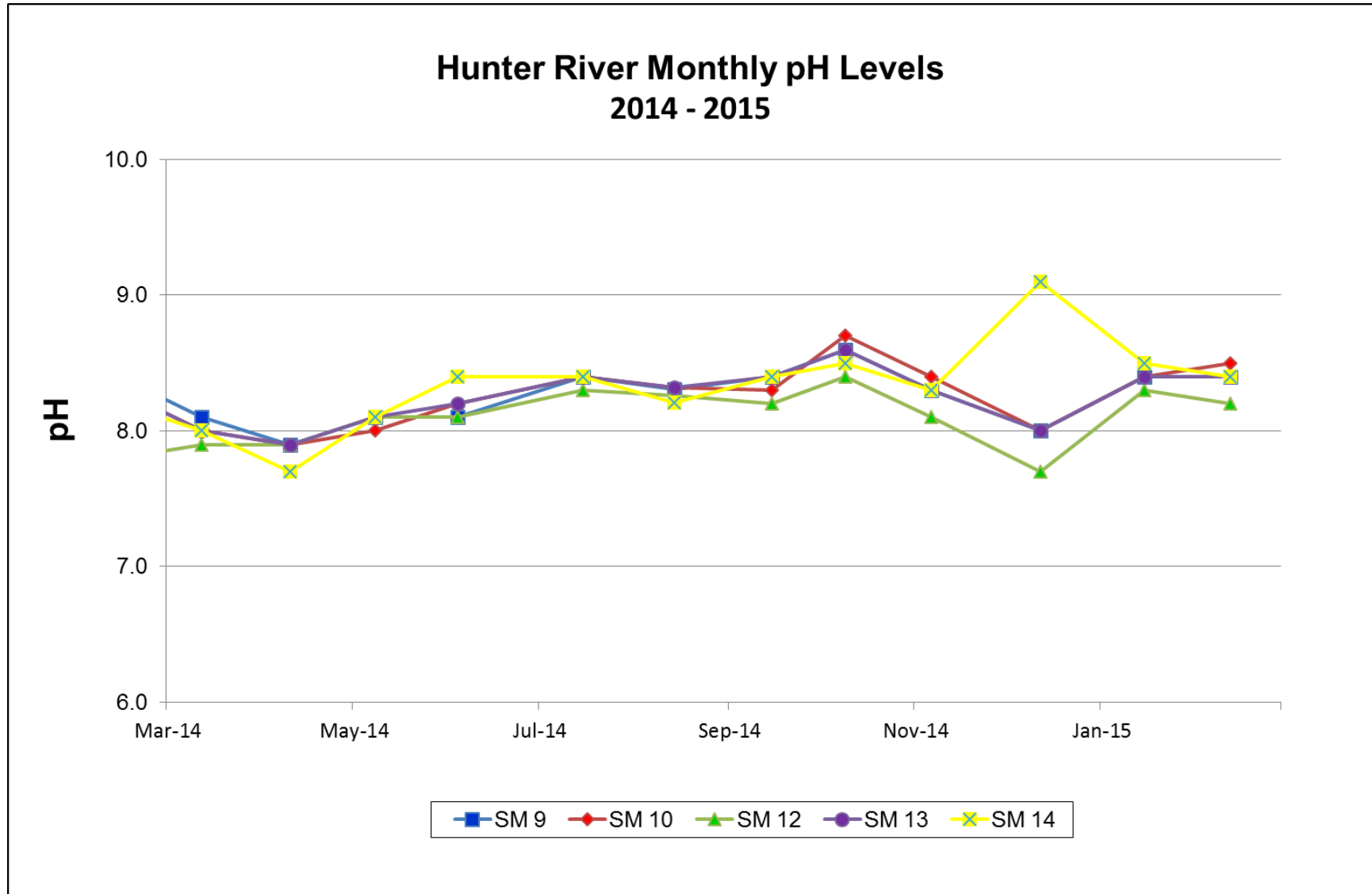


# Surface Water Quality – EC

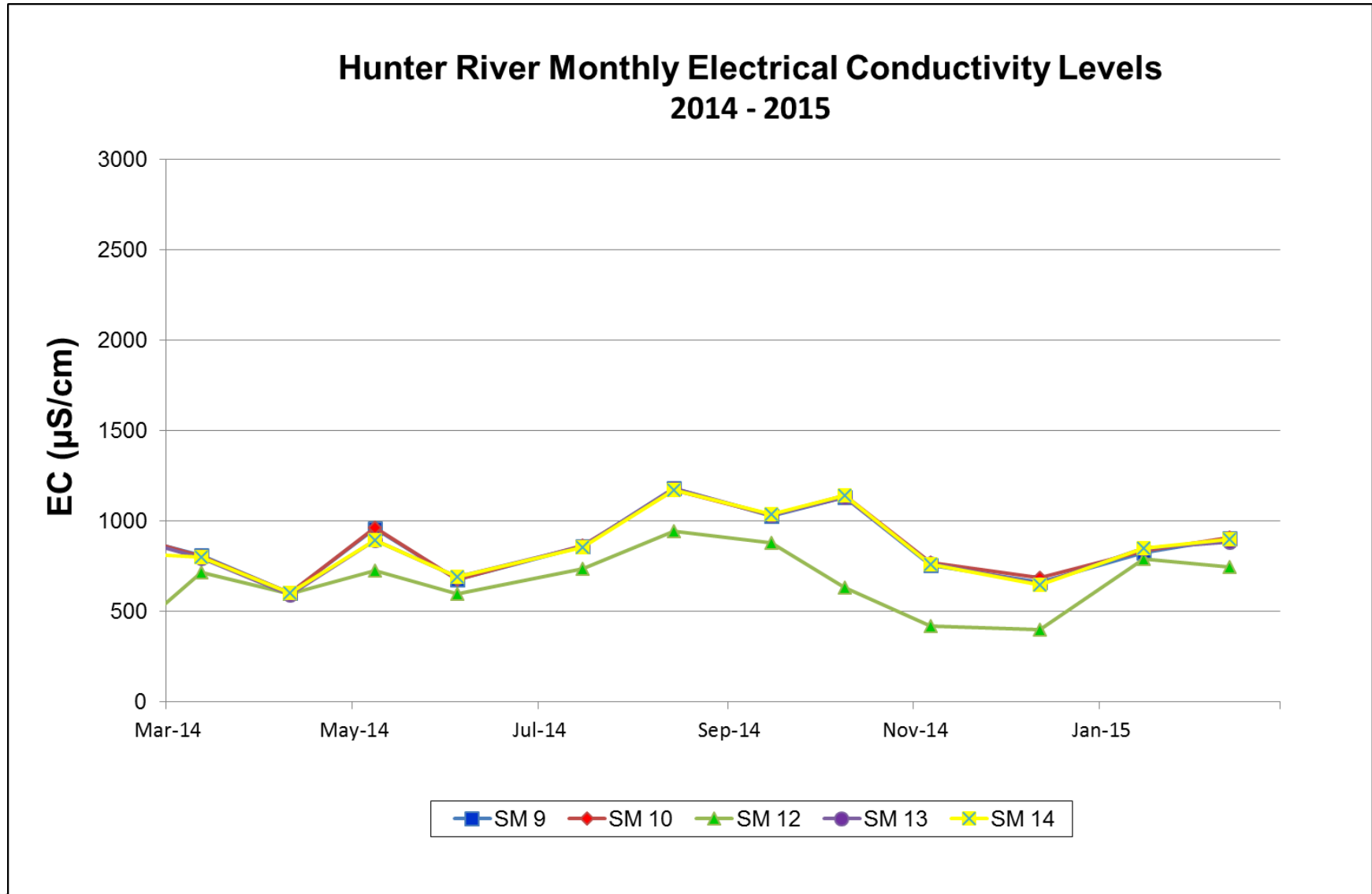
## Bowmans Creek Monthly Electrical Conductivity Levels 2014 - 2015



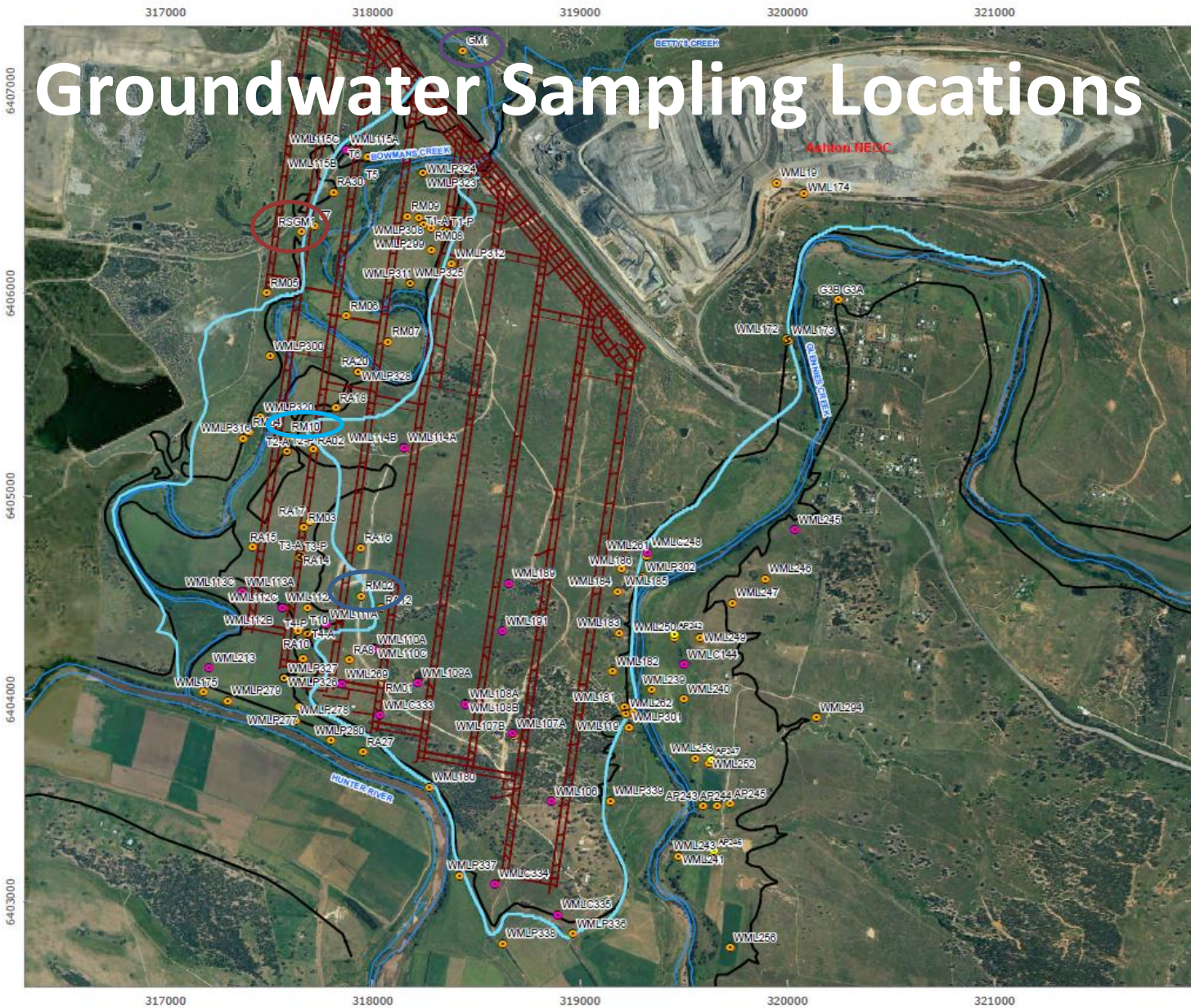
# Surface Water Quality – pH



# Surface Water Quality – EC



# Groundwater Sampling Locations



- LEGEND**
- Standpipe Piezometers
  - Test Bores
  - Vibrating Wire Piezometers
  - Alluvium Boundary
  - Upper Liddell Mine Plan
  - 1:100 Years Flood Line
  - Creeks and River

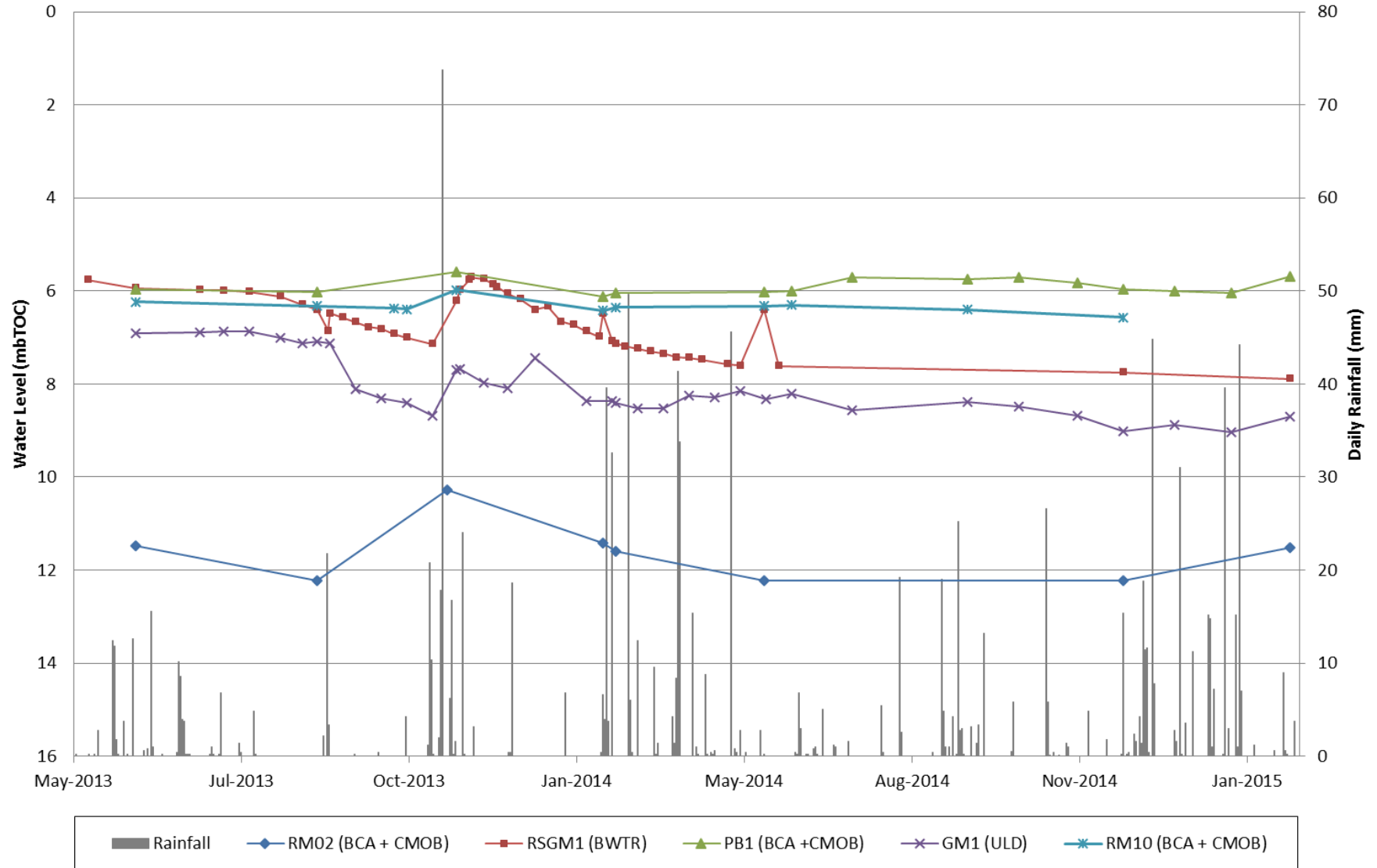


**RPS Aquaterra**  
**FIGURE 12**  
**Groundwater Monitoring Network**

Floodlines Compiled from Hyer 2009 and Worley Parsons 2009

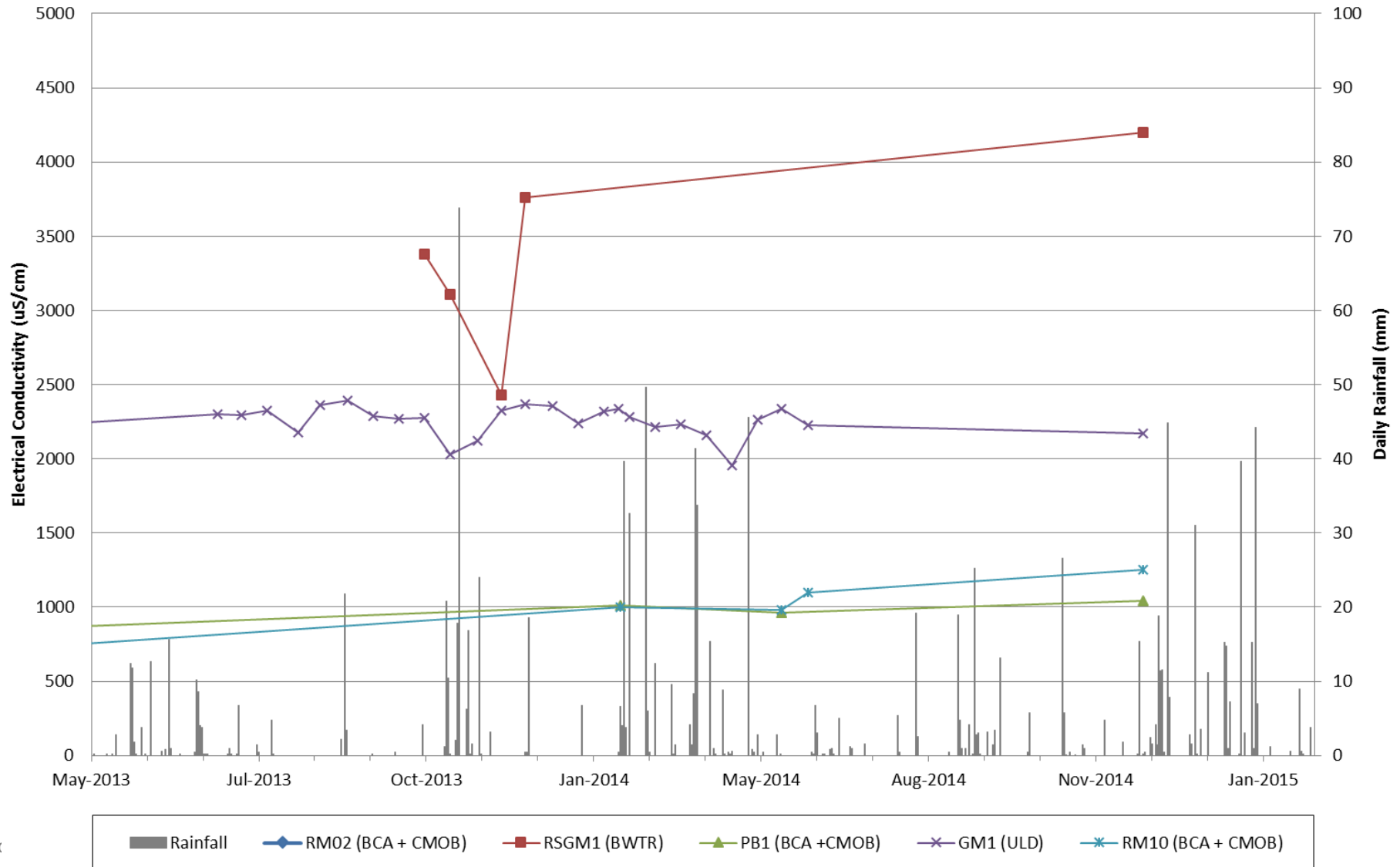
AUTHOR	TL	PROJECT NO	5386
CHECKED BY	JVA	REVISION	B
DATE	19/07/2012	DRAWING NO	0306

# Groundwater – Standing Depth





# Groundwater – EC



# Noise Monitoring

Attended noise monitoring is conducted Monthly.

There were no exceedences for the reporting period.

**Table 1**  
**ACP Noise Monitoring Results – 3 March 2015 – Night**

Location	Time	dB(A) Leq	Comments	WS (m/s)/ Direction	Inversion °C/ 100m	ACP Noise Sources
N2	10:27 pm	48	Traffic (46), frogs & insects (43), other mine (28), train (27), <b>ACP inaudible</b>	2.8/115	>3	n/a
N3	10:02 pm	41	Frogs & insects (38), traffic (37), other mine (31), <b>ACP inaudible</b>	2.2/110	>3	n/a
N4	10:55 pm	43	Frogs & insects (42), traffic (36), other mine (26), <b>ACP inaudible</b>	2.4/115	>3	n/a

# Complaints and Enquiries

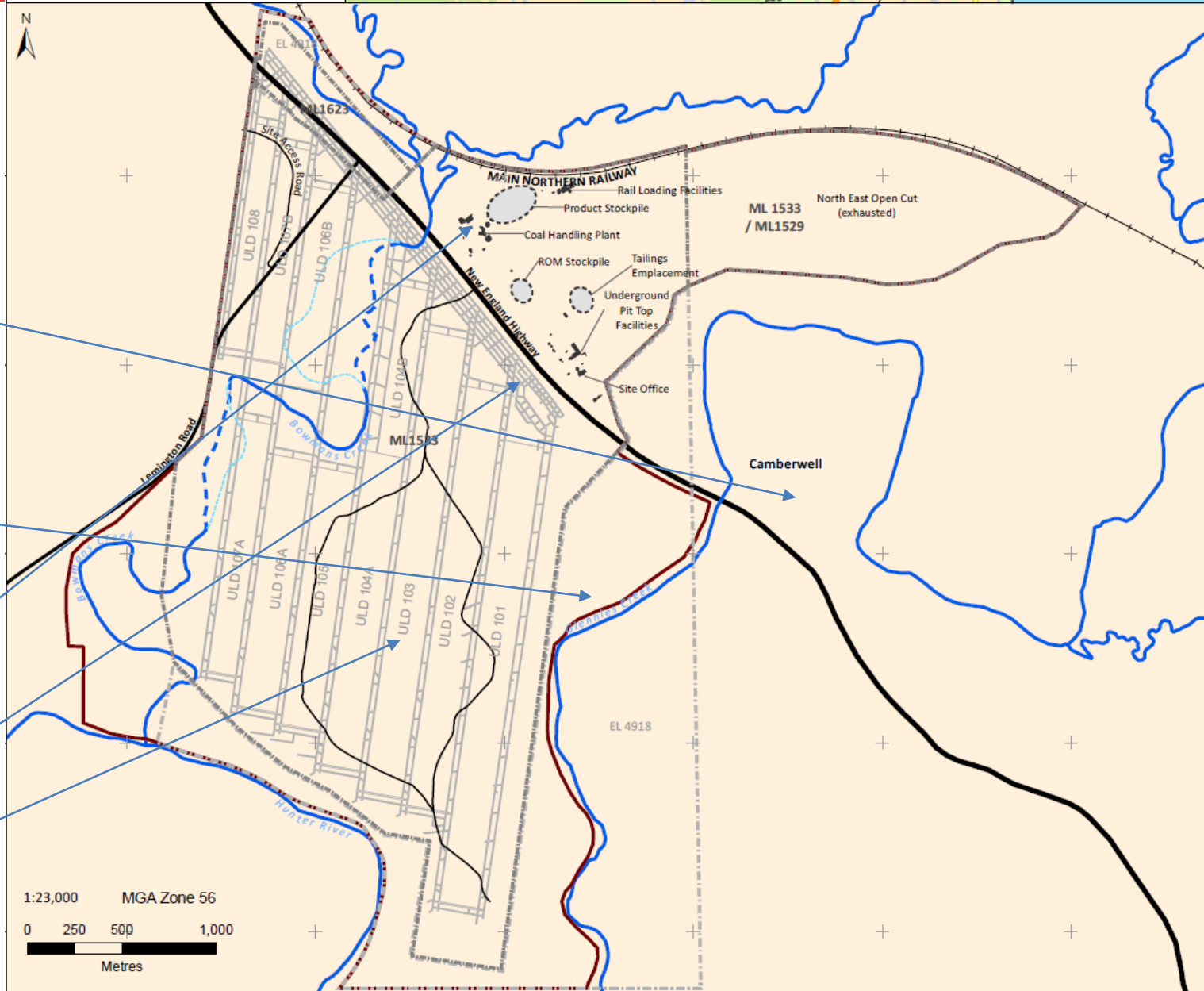
**There were nil complaints received during this quarter.**

	2014	2015 YTD
Complaints	1	0
Enquiries	1	0

**Note: The noise files were assessed for the 2014 complaint and they were found to be dominated by livestock and noise from highway traffic. ACOL conducted attended noise monitoring soon after the complaint and was found to be inaudible.**

# What else is going on?

- Triannual CCC Frequency
- AEMR Preparation and Lodgement (Copies available on website)
- 1 Alpha St – WMR Nursery
  - Tree Planting and irrigation works on Bowmans Creek Diversion
- Weed Management
  - Weeds along Glennies Creek including Green Cestrum, Castor Oil Plant and Boxthorn.
- Fines Plant
- Interseam staple shaft construction
- Gas well construction



# Any Questions?