

Ashton Coal Operations Pty Ltd
Community Consultative Committee
Presentation – 28 July 2015



Action List

ITEM	RESPONSIBILITY	PROGRESS UPDATE
Newsletter to be drafted, published and distributed to community – including donations summary, SEOC appeal, UG infrastructure projects and rehabilitation photos	DS	Community newsletter postponed. Focus on Community Support Program.
Tree Screen at New England Hwy – Optic fibre has been located and the area needs to be archeologically cleared to allow for the tree screens to commence.	DS	Engaged WMRS to source seedlings. Ecologist inspecting site during week commencing 27 July.
Notify the Upper Hunter Weeds Authority of the Green Cestrum issues upstream of ACOL land holdings	JB	Complete – notified Upper Hunter Weeds Authority of Green Cestrum issue.

Ashton Statistics

Ashton Coal Statistics		
	2015 Budget (YTD)	2015 Actual
ROM (t)	1,411,041	1,383,534
Product Coal (t)	665,741	624,192
Total Coal Sales (t)	636,000	654,899
Lost Time Injury (LTI)	7.95	7.57
Total Recordable Injuries (TRI's)	33.31	27.76
Total Employees (FTE)	222	199

Community Support Program

- Community Support Program
 - Established to provide assistance to local initiatives within the Upper Hunter region of Singleton and Camberwell.
 - Wide range of community needs such as education, environment, health, infrastructure projects, arts, leisure and research.
- How the program works
 - Ashton has community support budget
 - Local groups are invited to submit applications throughout the year, with applications closing twice a year
 - Group consisting of Ashton Coal representatives and selected community representatives will access applications
- Application forms available on Ashton website – next round 31 Oct 2015



YANCOAL
兗煤澳大利亞有限公司

Ashton Coal Community Support Program

Committed to investing in community projects and groups across Singleton and the surrounding areas, applications for Ashton Coal's Community Support Program are now open.

Applications for the current allocation close 31st May 2015.



To download guidelines and an application form, please visit www.ashtoncoal.com.au and click on the top 'Environment and Community' tab, then Community Support Program.

AshtonCoal
PART OF THE YANCOAL AUSTRALIA GROUP

AW1677768

Community Support Program

Organisation	Purpose	Amount (\$)
Singleton Mayoral Scholarship	Academic Scholarship 2015	\$5,500
Naidoc celebration week	NAIDOC celebrations coordinated by the Singleton council	\$2,000
The Pancar Foundation and the Calcary Mater Hospital	High tea - Fundraiser for pancreatic cancer	\$300
Hunter region SLSA Helicopter Rescue Services	Westpac helicopter charity shield knock out competition (rugby league)	\$750
Singleton Junior Rugby Club	Adopt-a-road program on Glennies Creek	\$1,650
Northern Agricultural Association	2015 Singleton Show	\$3,500
Witmore Enterprises	Vinyl covered chairs	\$3,500
Singleton Public School	P&C canteen provided with two freestanding oven and stove tops	\$2,800
Cancer Council	Relay for Life - Team McInerney	\$2,000
		\$22,000

Current Operations

- ACOL has recently commenced LW104 in the Upper Liddell Seam.
- South East Open Cut – no further movement
- Upper Lower Liddell Drifts (ULLD) have been completed and pit bottom drivage is continuing in readiness for mining in the ULLD seam.



Exploration Activities

No exploration was conducted in EL5860 or EL4918.



Approvals Update

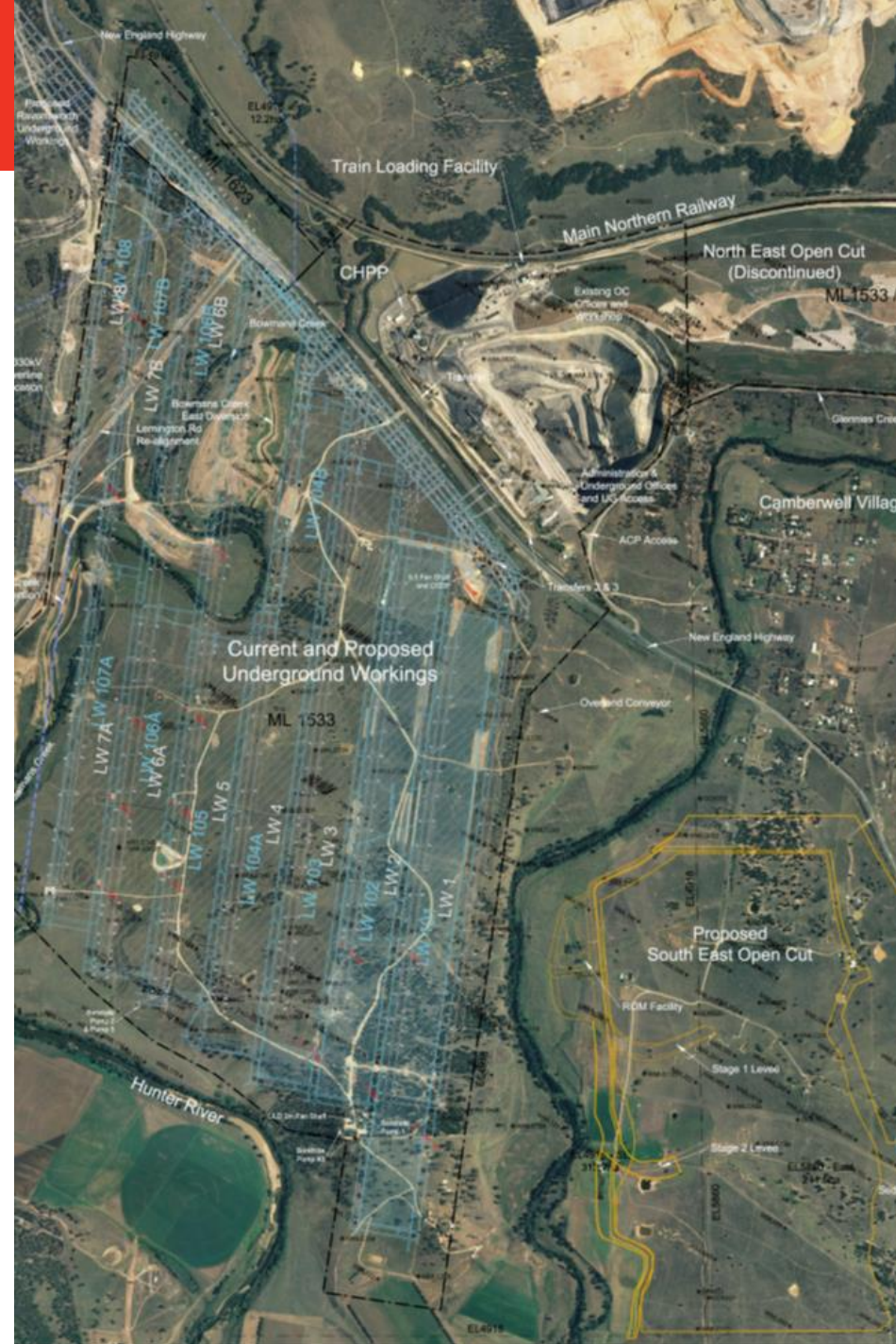
As mining at ACOL progresses additional approvals are required to continue operations.

Recent Approval determinations include:

- Subsidence Monitoring Program for LW104
- Consolidated Water Monitoring and Hardrock Groundwater Licences

Future approvals to be lodged include:

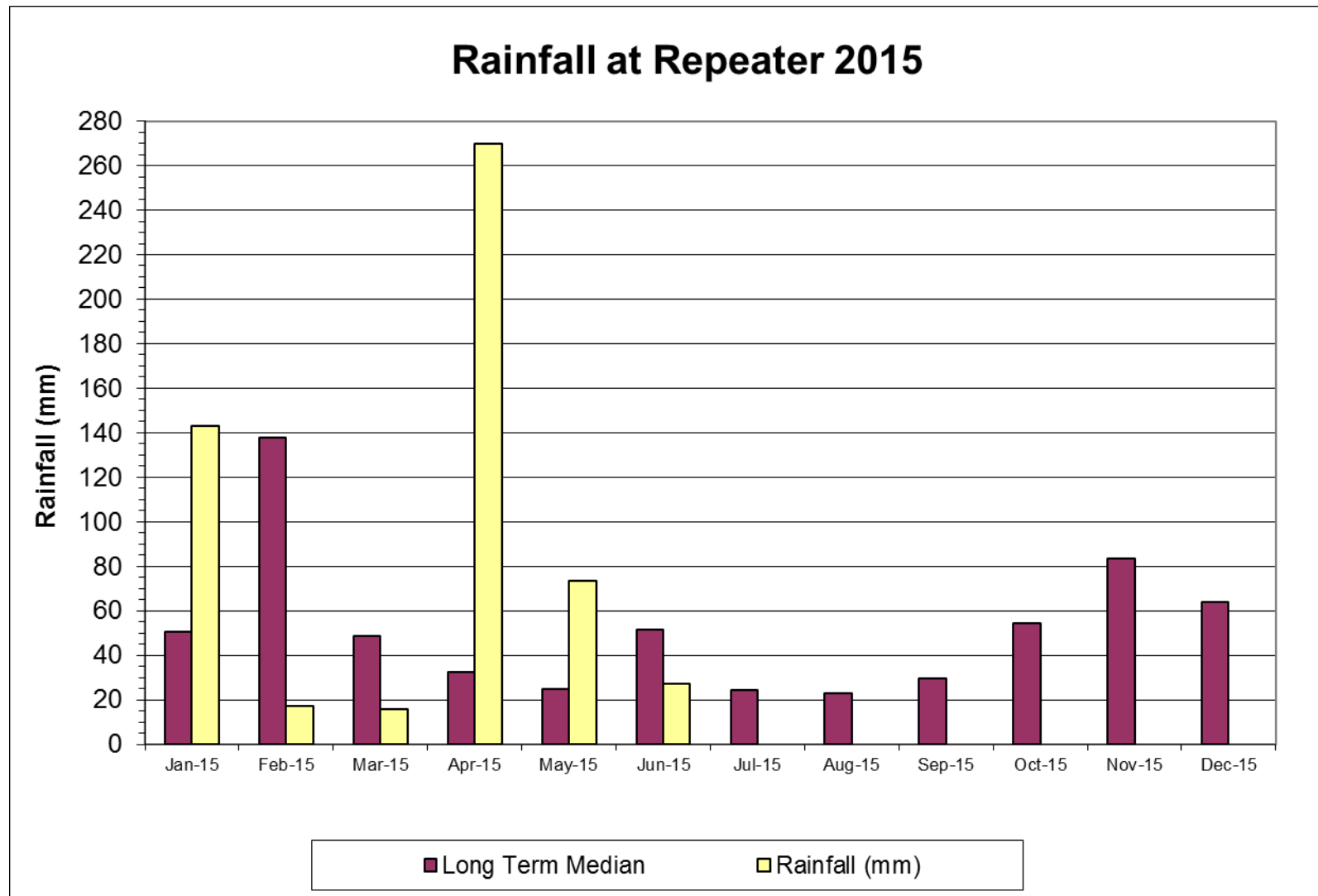
- Extraction Plan (EP) for LW 105-107 in the Upper Liddell Seam.



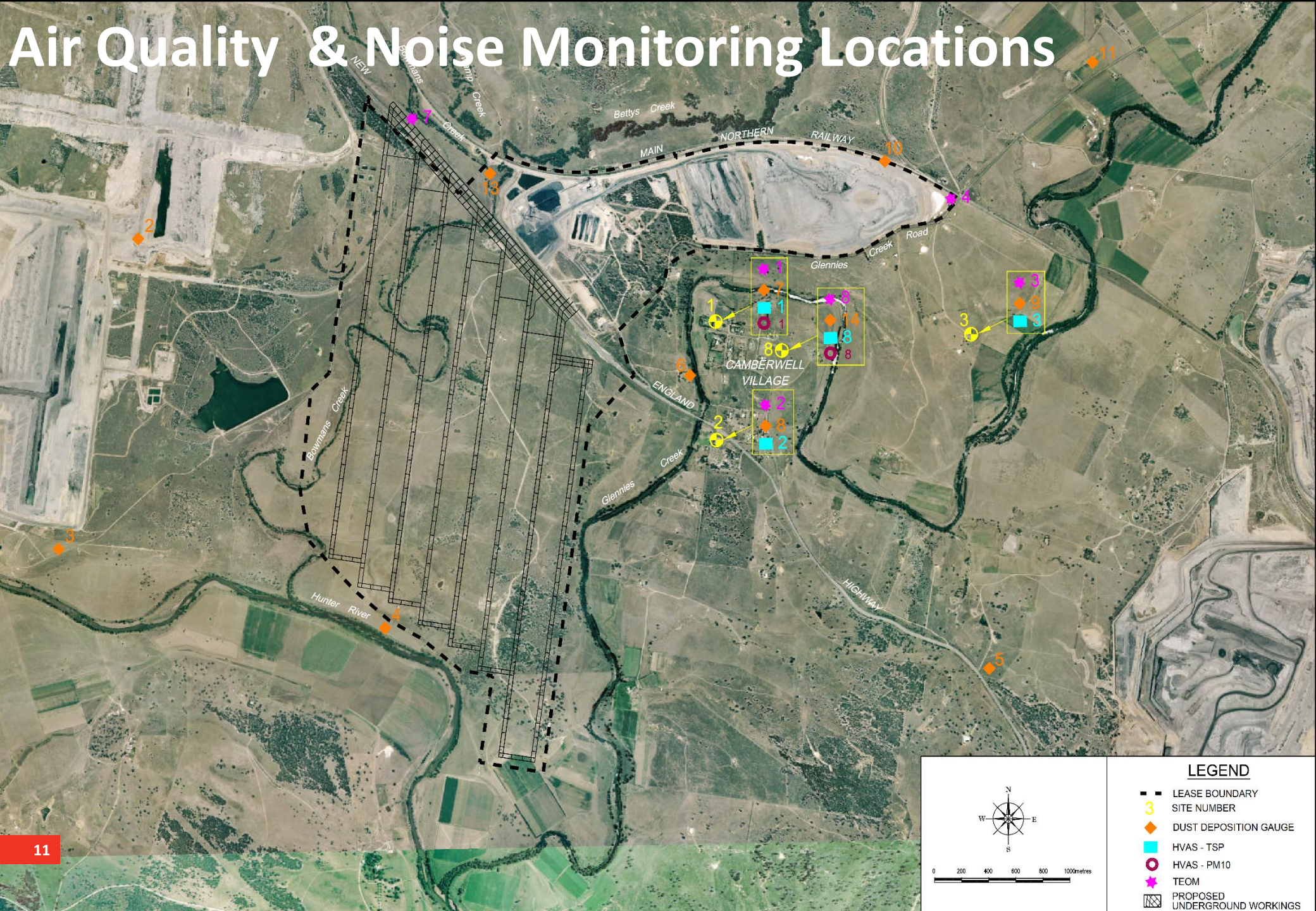
Environment Monitoring Data

- The following slides present environmental monitoring data for the reporting period
- Meteorological
 - Rainfall
- Air Quality
 - Depositional Dust Gauges – Total suspended dust
 - PM10 – Tapered Element Oscillating Microbalance (TEOM)
- Surface Water – Glennies Ck, Bowmans Ck and Hunter River
- Groundwater – various aquifers
- Noise

Rainfall

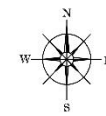


Air Quality & Noise Monitoring Locations



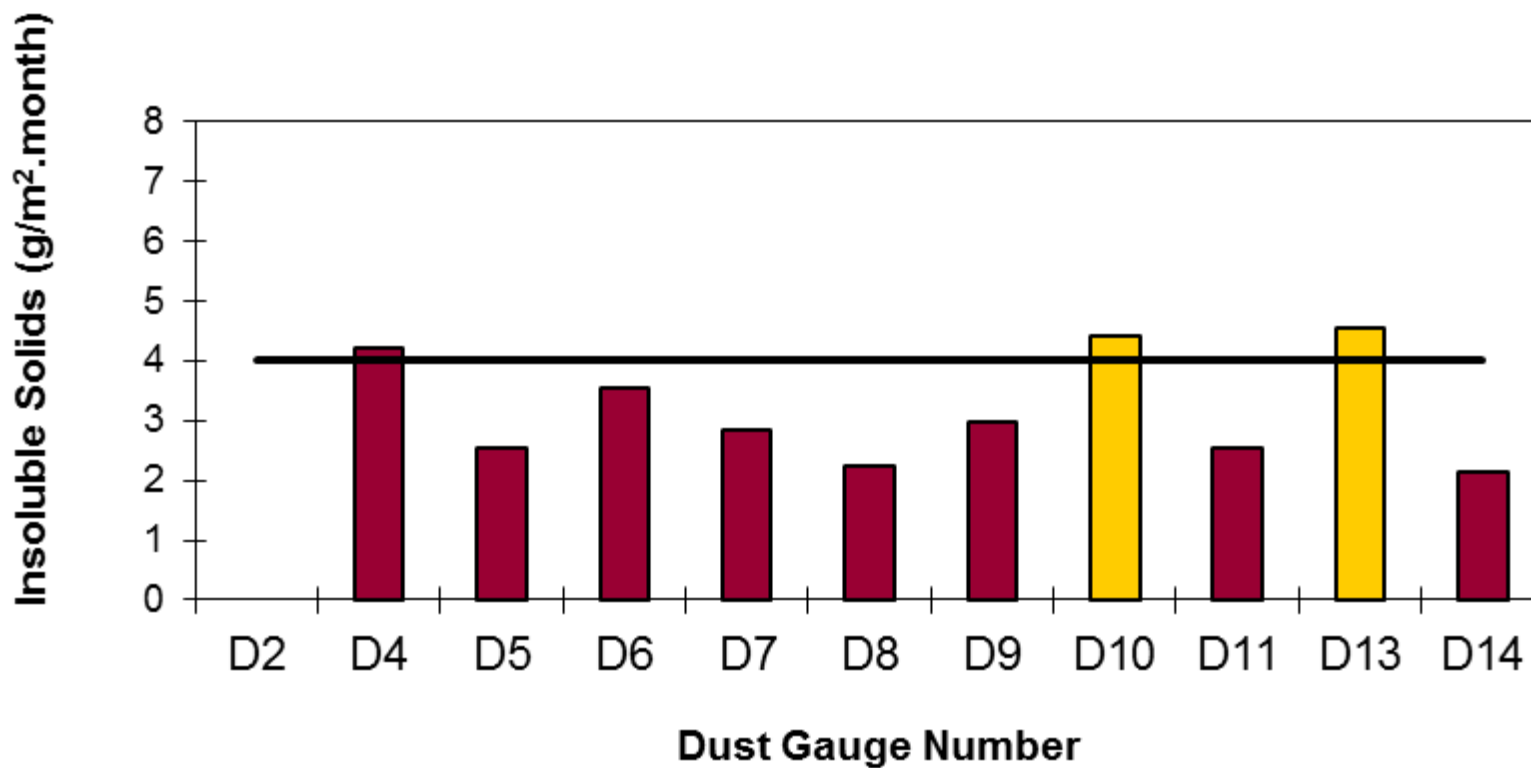
LEGEND

- LEASE BOUNDARY
- 3 SITE NUMBER
- ◆ DUST DEPOSITION GAUGE
- HVAS - TSP
- HVAS - PM10
- ★ TEOM
- PROPOSED UNDERGROUND WORKINGS



Depositional Dust

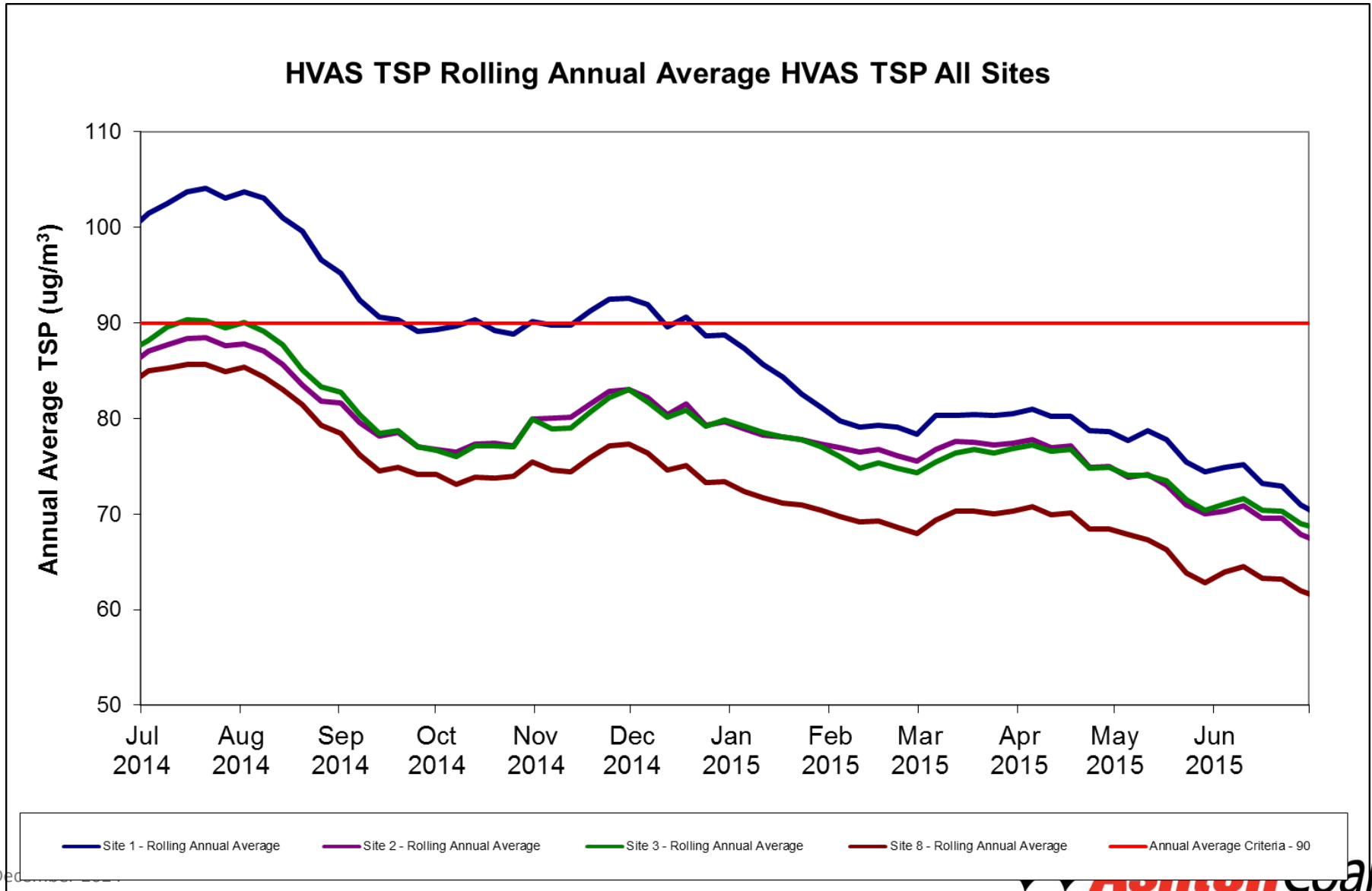
Depositional Dust Gauge Rolling Annual Average



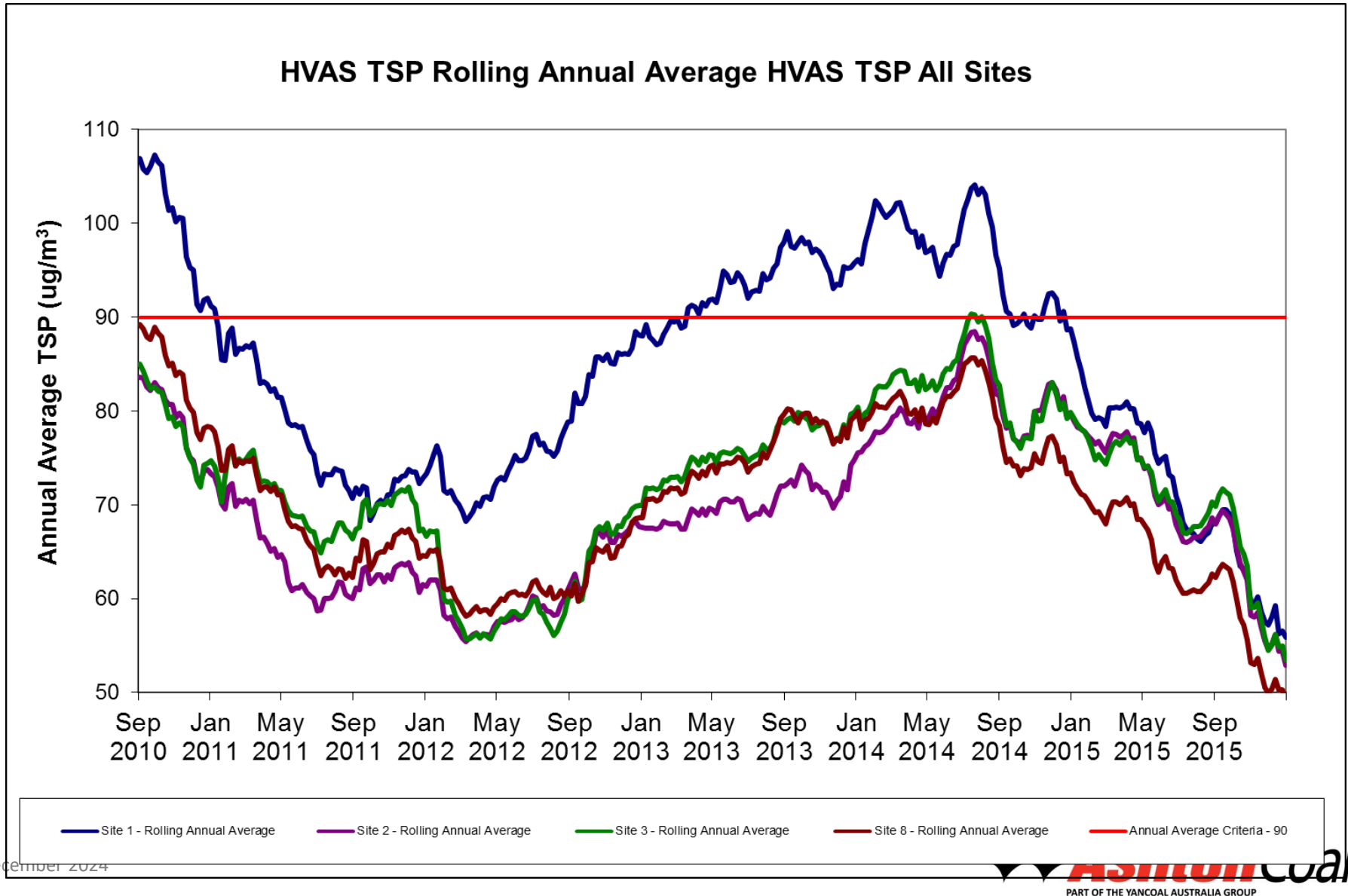
On-site Dust Gauges



Total Suspended Dust

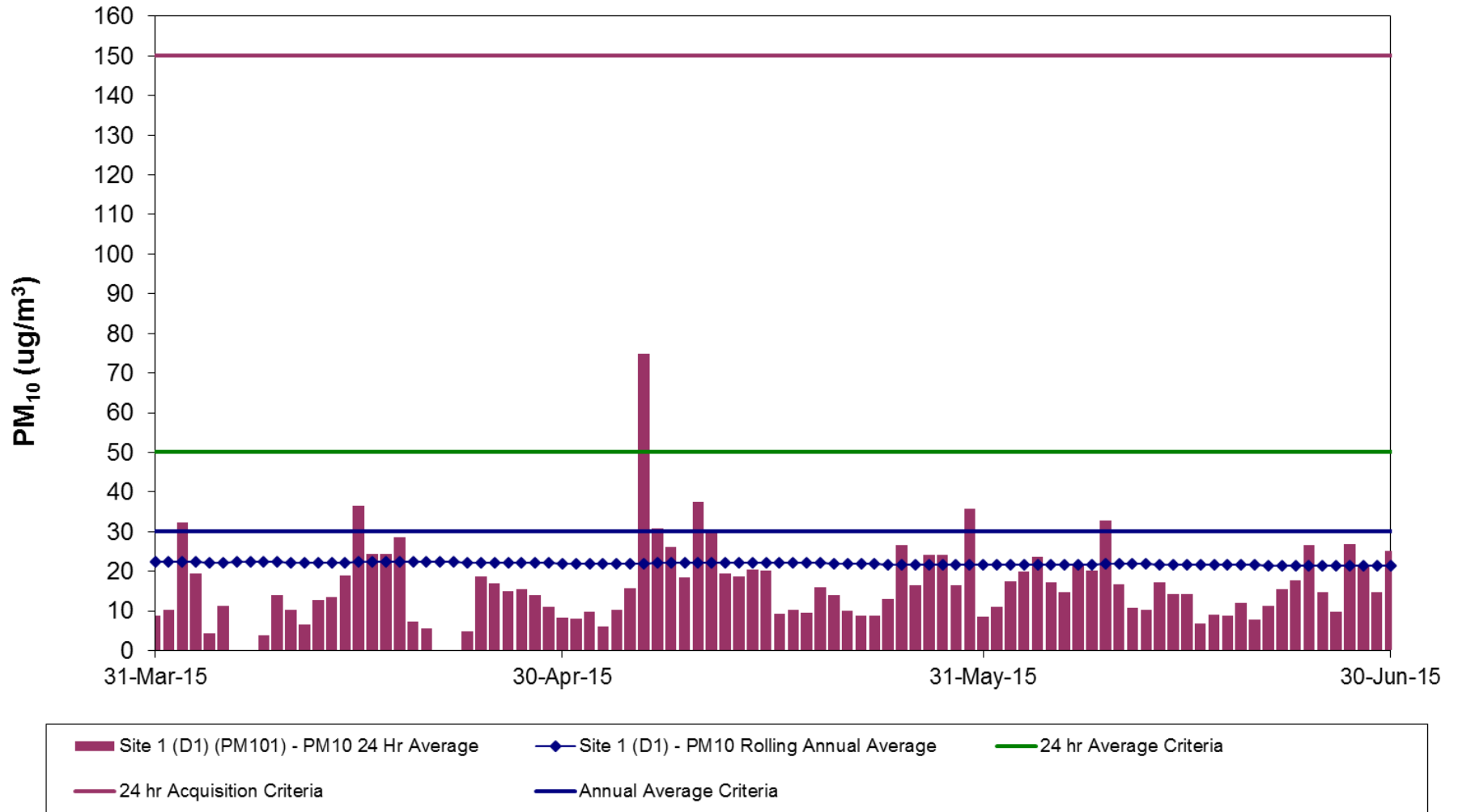


Total Suspended Dust



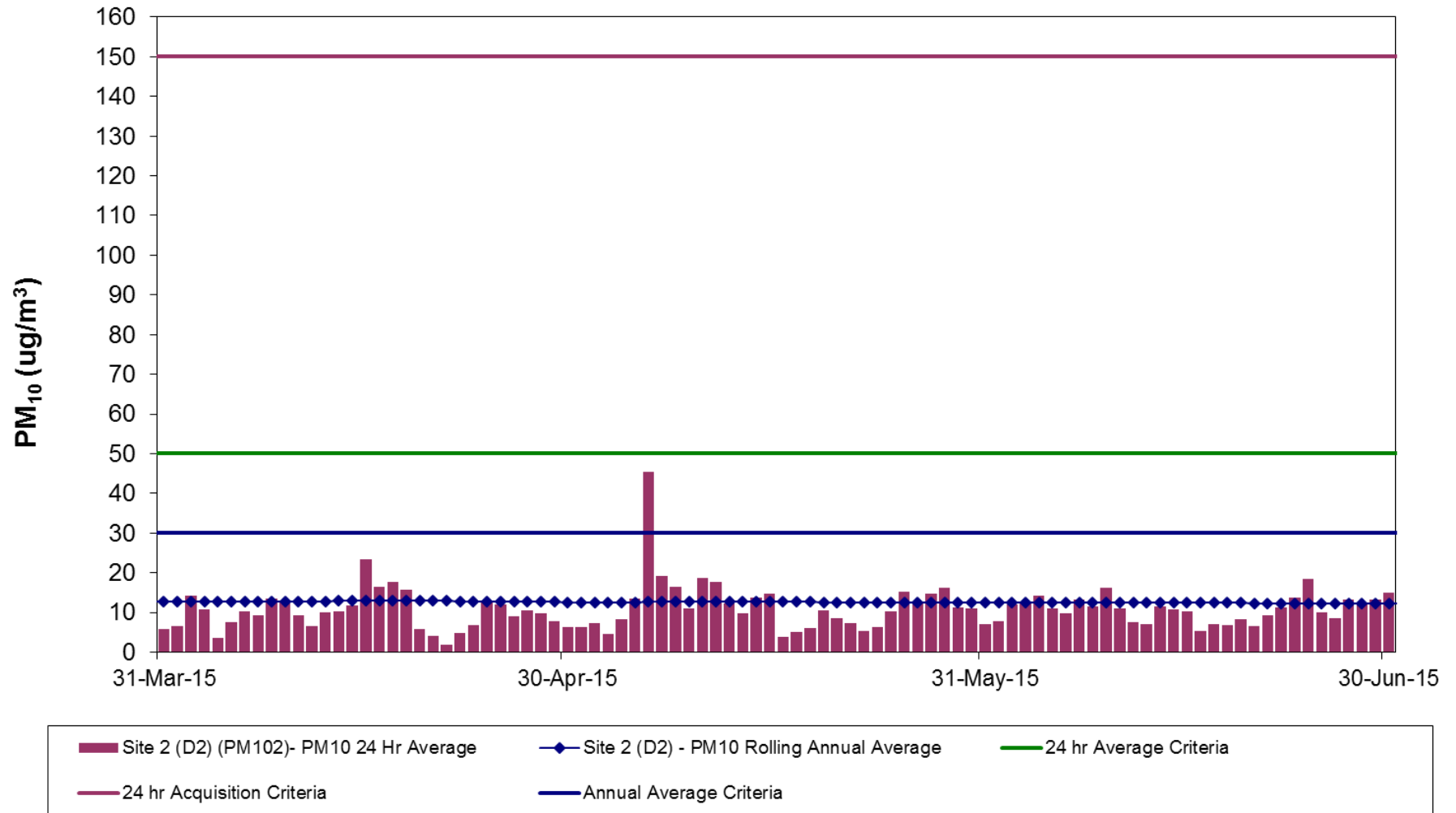
PM₁₀ Dust – Site 1

Site 1 TEOM PM₁₀ Results - Nov 2014 to Feb 15



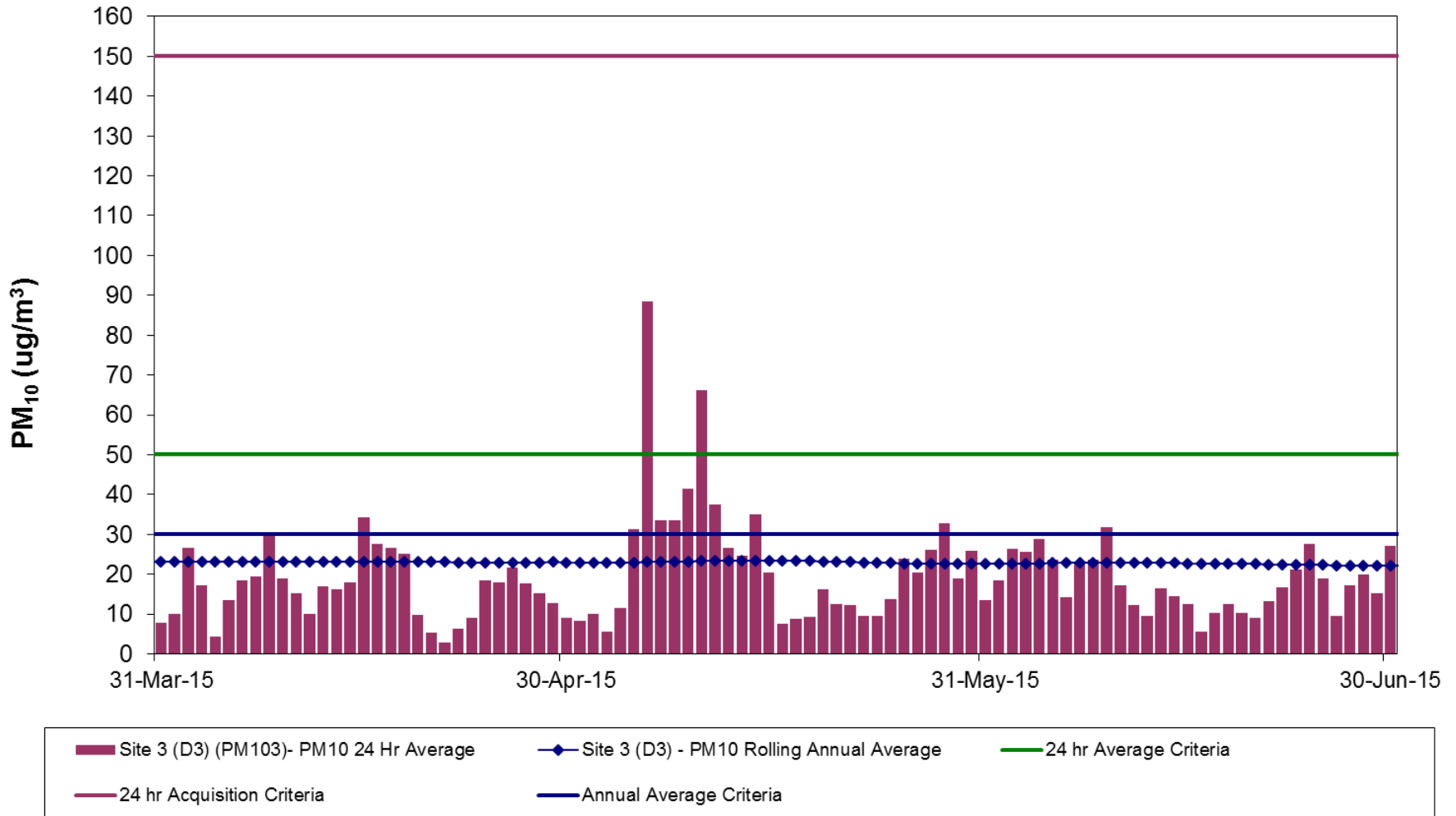
PM₁₀ Dust – Site 2

Site 2 TEOM PM₁₀ Results - Nov 2014 to Feb 15



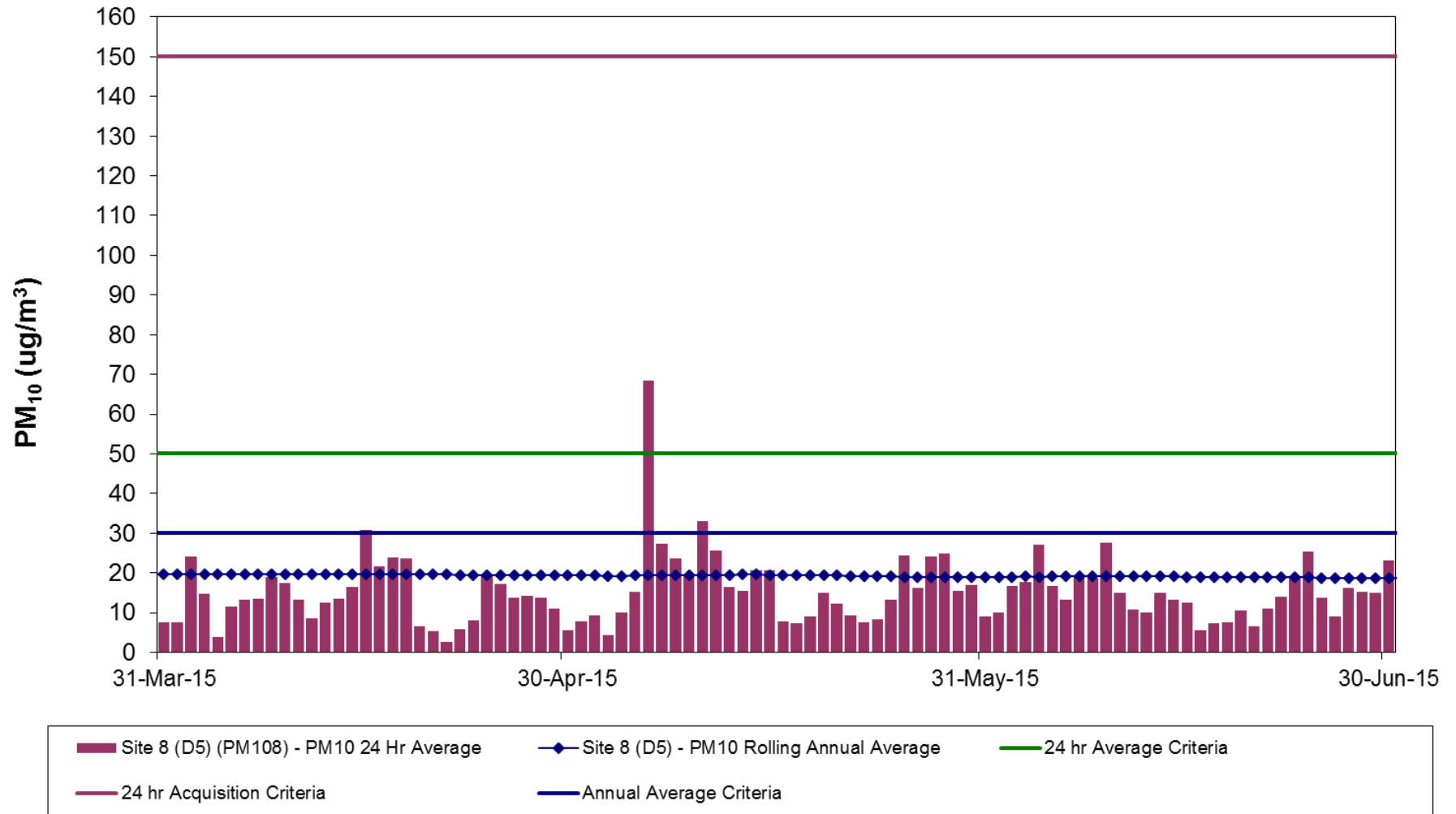
PM₁₀ Dust – Site 3

Site 3 TEOM PM₁₀ Results - Nov 2014 to Feb 15

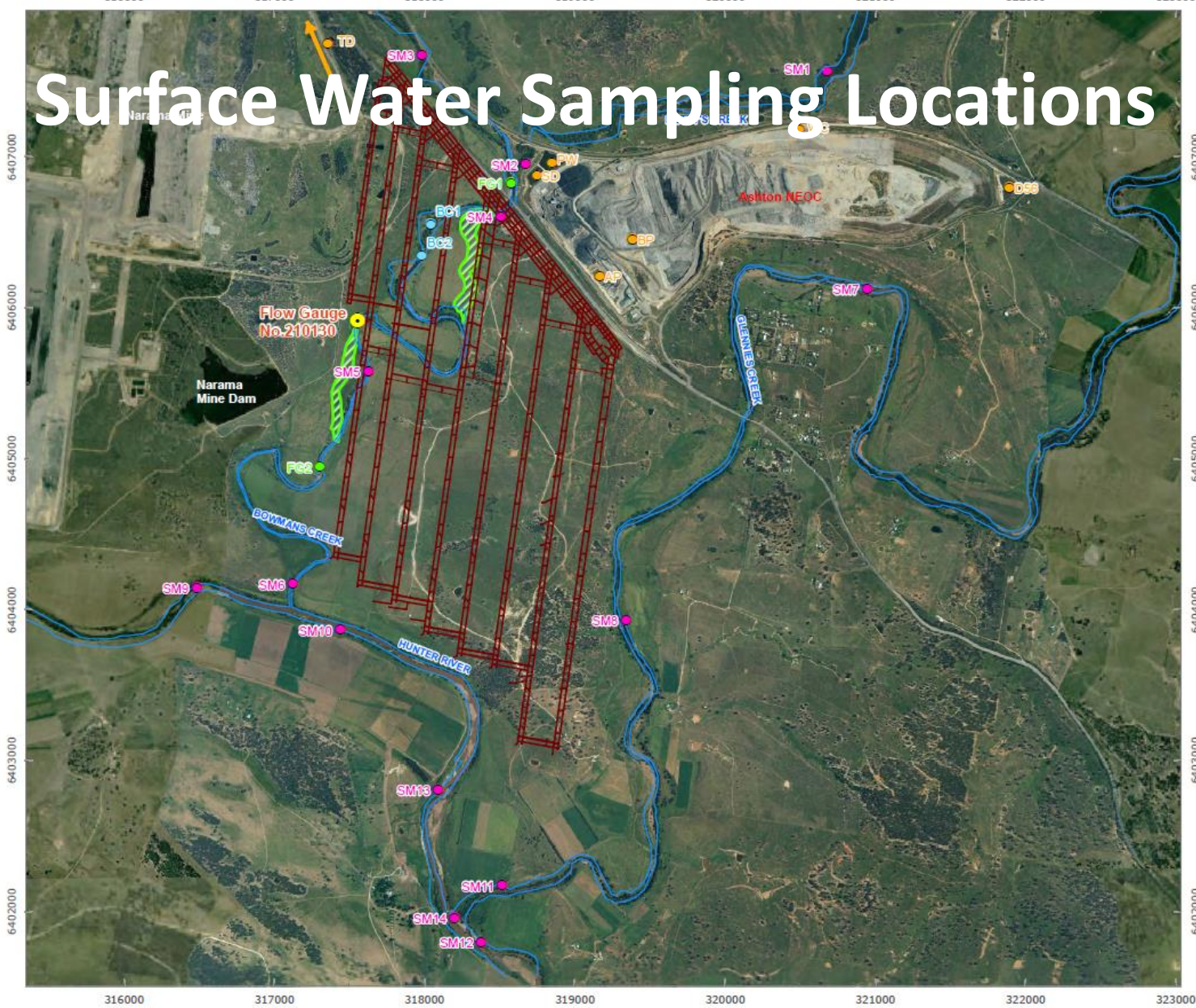


PM₁₀ Dust – Site 8

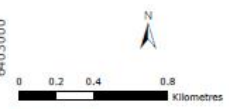
Site 8 TEOM PM₁₀ Results - Aug to Nov 2014



Surface Water Sampling Locations



- LEGEND**
- Surface Water Monitoring Location
 - Onsite Water Management Monitoring Location
 - Bowmans Creek Monitoring Location
 - ACOL Flow Gauge
 - NSW Office of Water Gauge
 - Upper Liddell Mine Plan
 - Creeks or River
 - ▨ Diversion Footprint



RPS Aquaterra

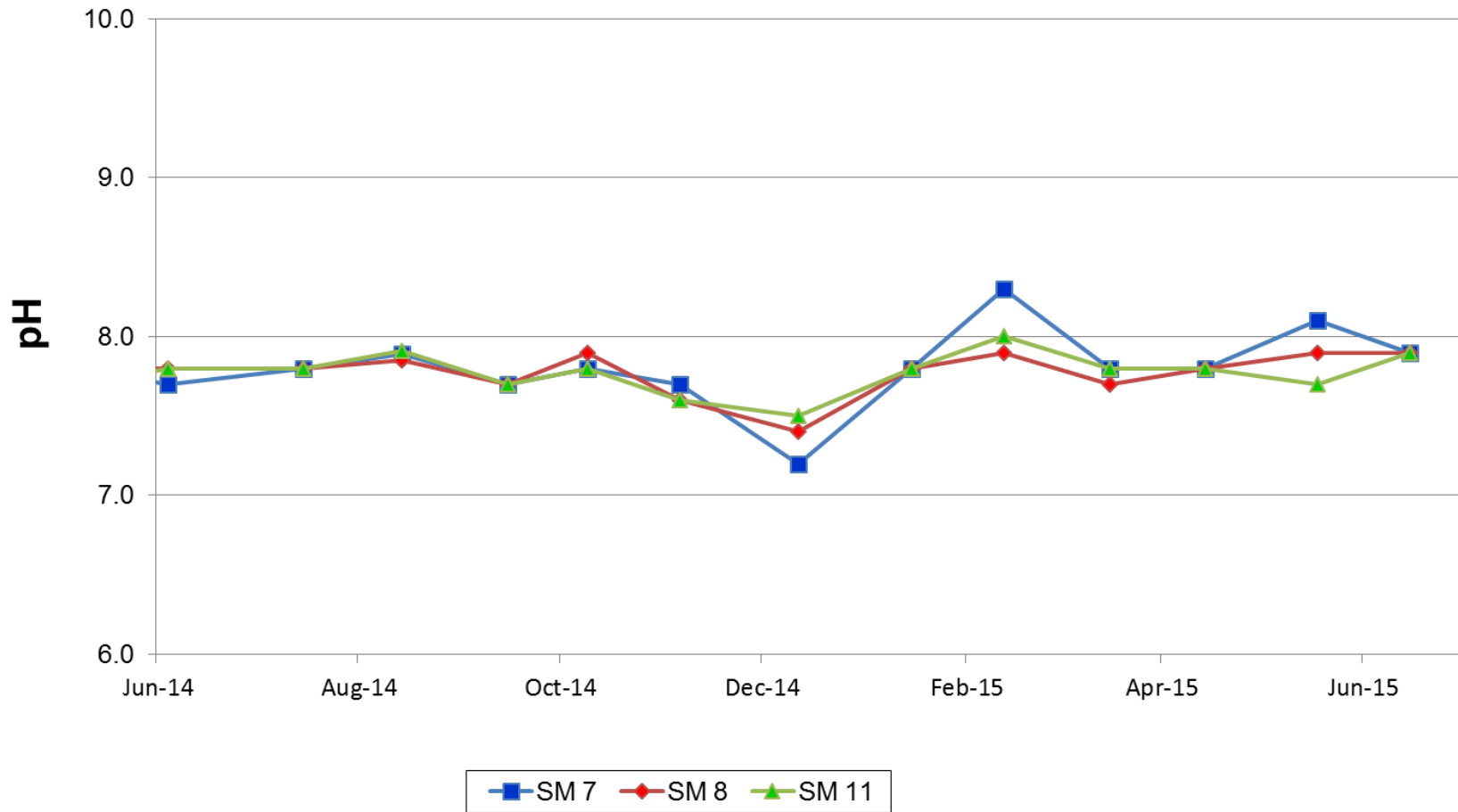
FIGURE 11

Surface Water Monitoring Network

AUTHOR	HZ	PROJECT NO	SSRE
CHECKED BY	JVDA	REVISION	A
DATE	19/07/2011	DRAWING NO	029e

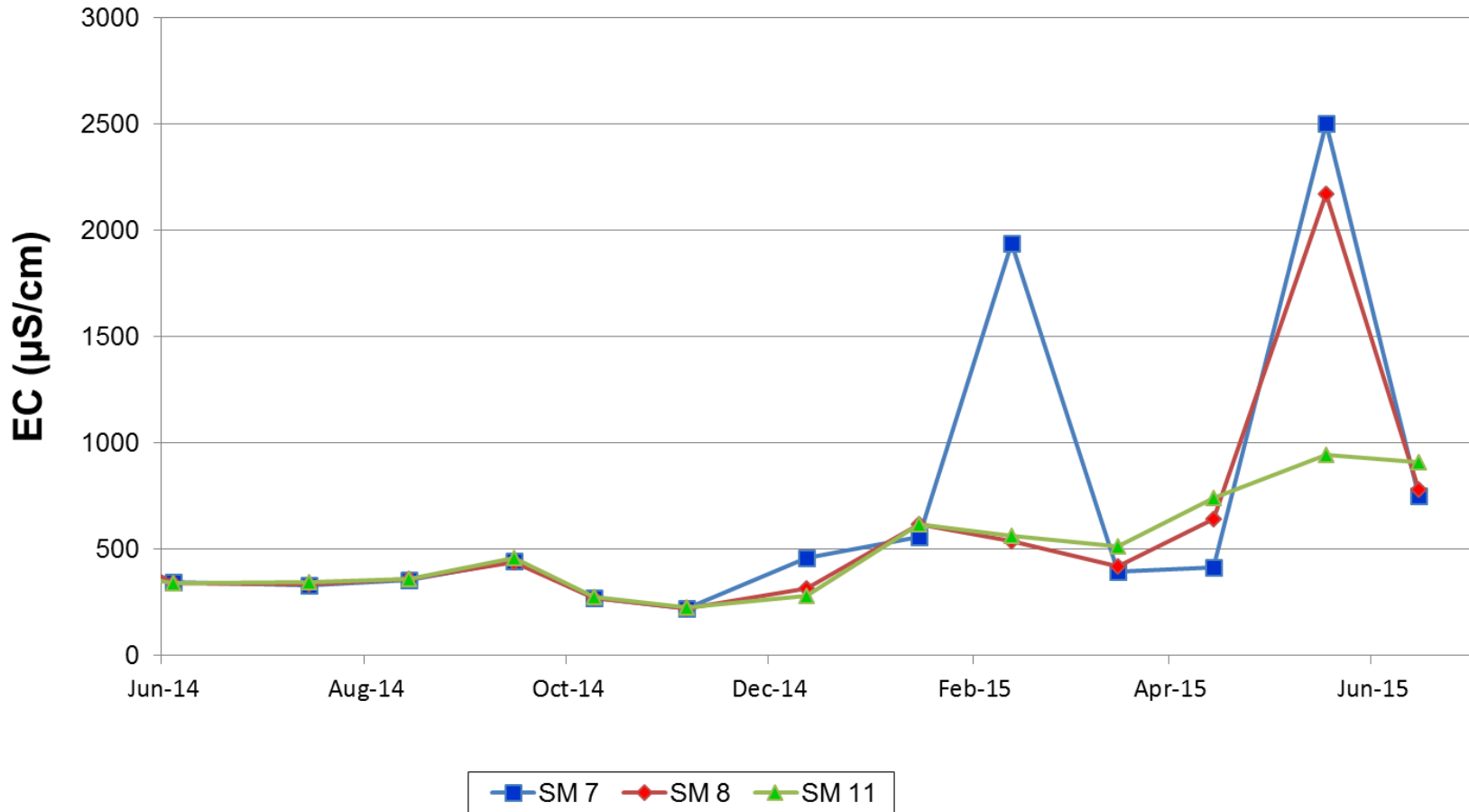
Surface Water Quality – pH

Glennies Creek Monthly pH Levels 2014 - 2015



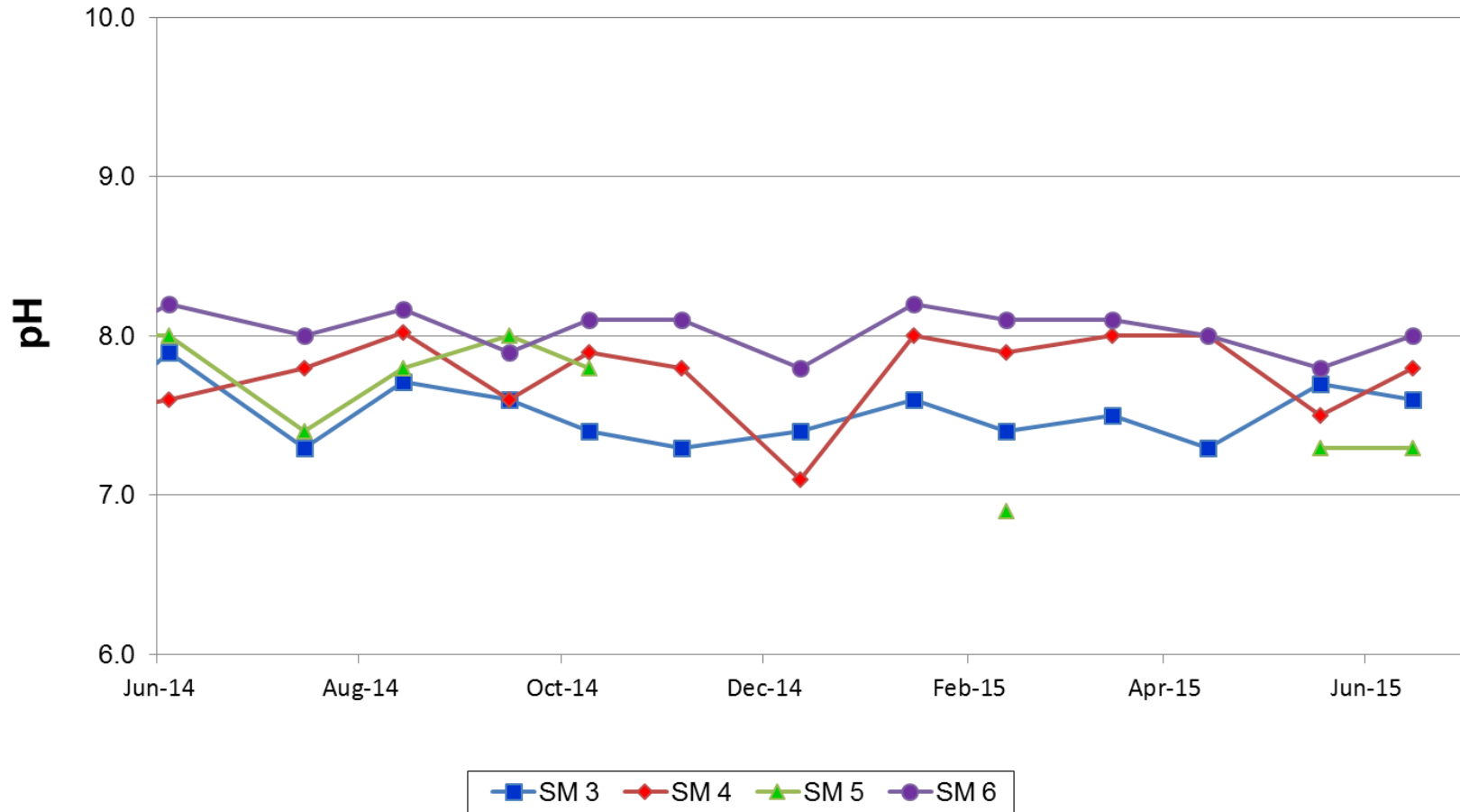
Surface Water Quality – EC

Glennies Creek Monthly Electrical Conductivity Levels 2014 - 2015



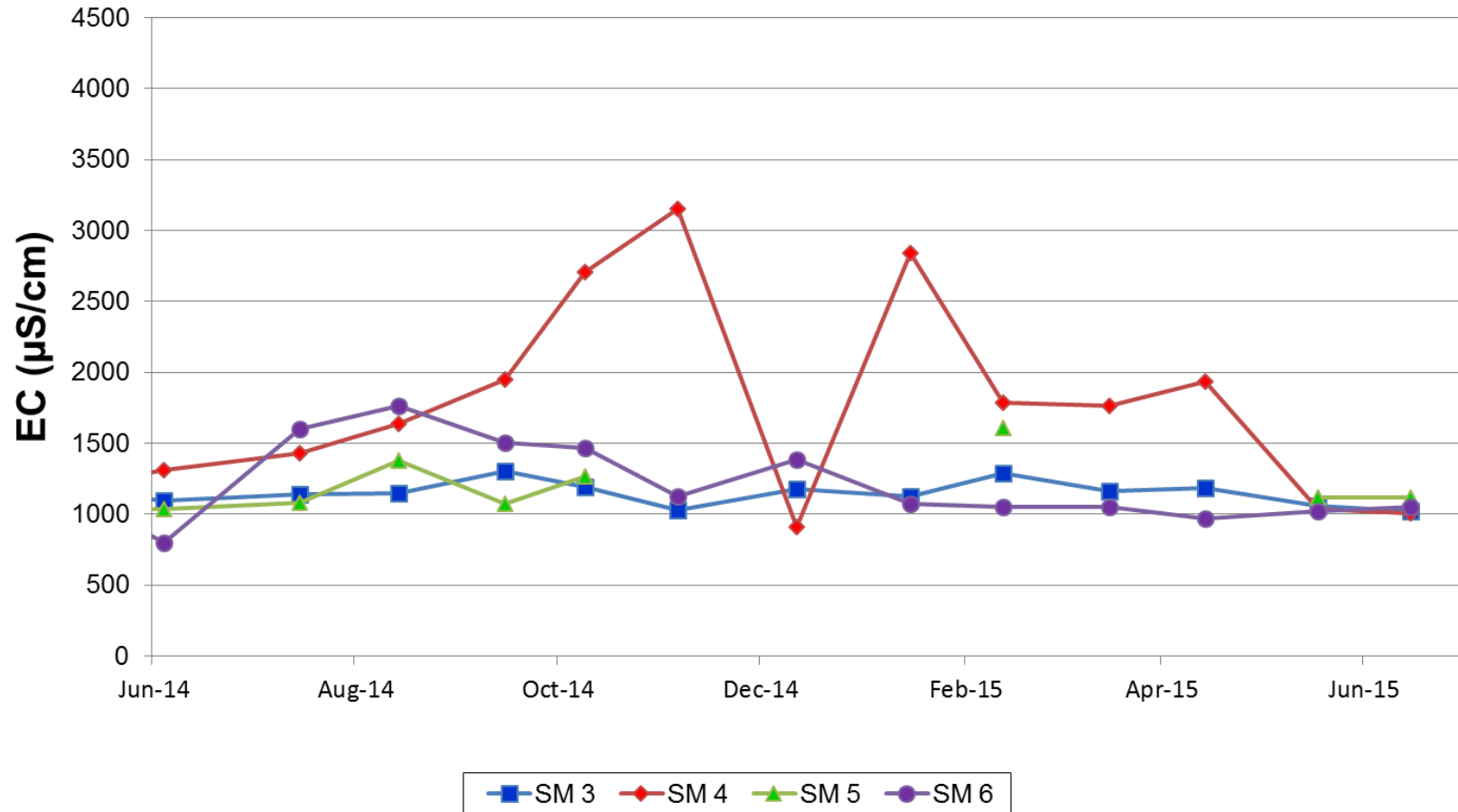
Surface Water Quality – pH

Bowmans Creek Monthly pH Levels 2014 - 2015



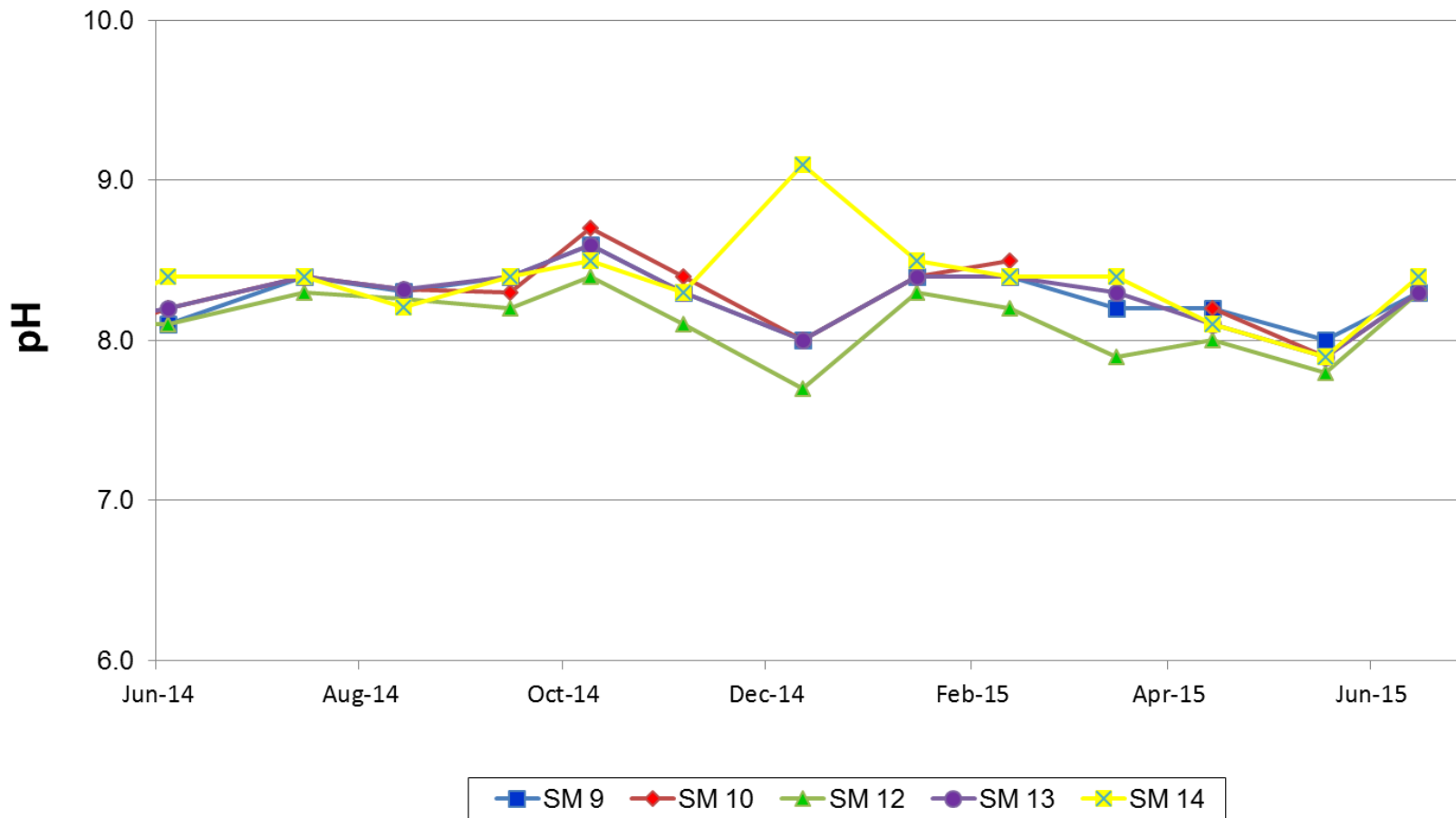
Surface Water Quality – EC

Bowmans Creek Monthly Electrical Conductivity Levels 2014 - 2015



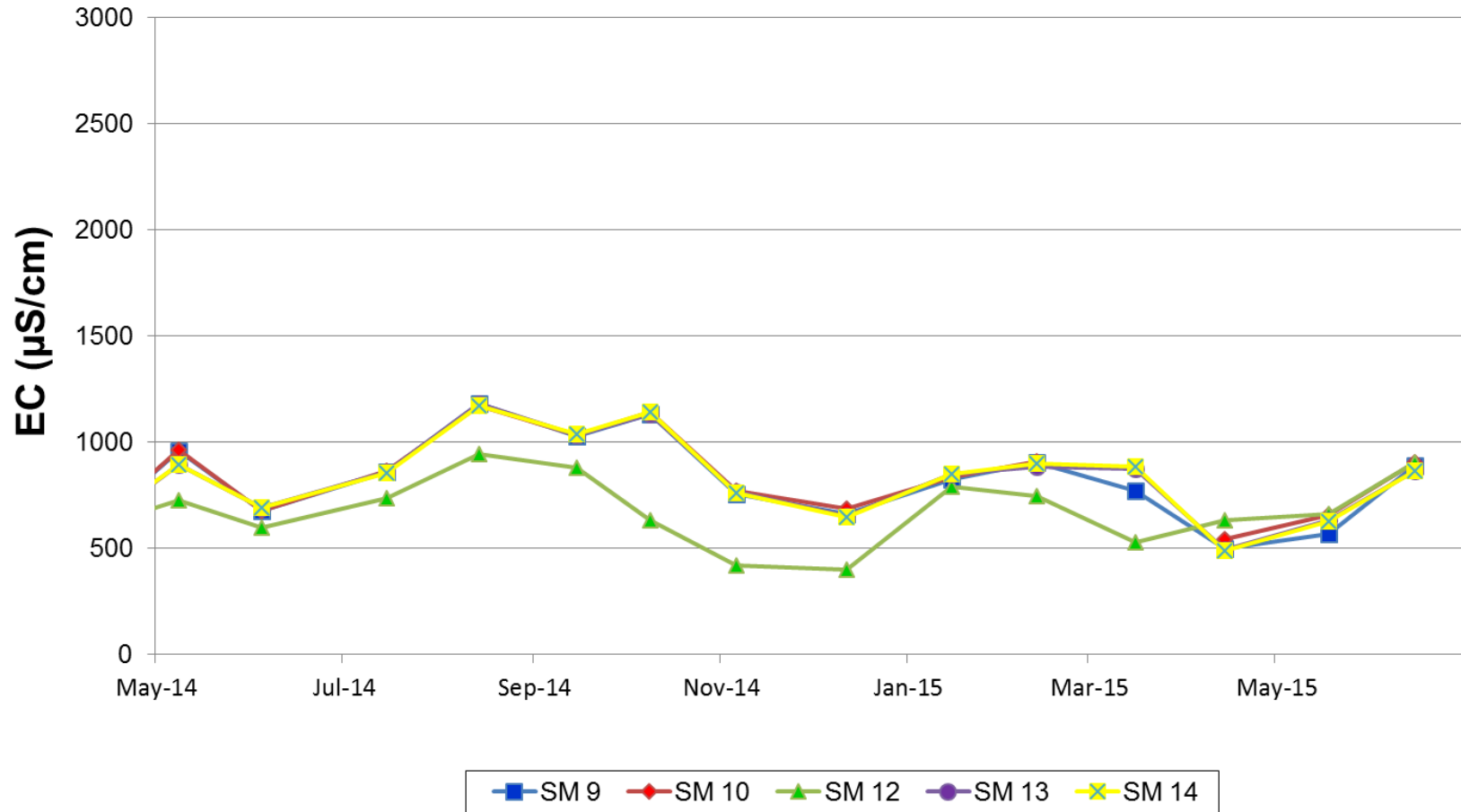
Surface Water Quality – pH

Hunter River Monthly pH Levels 2014 - 2015

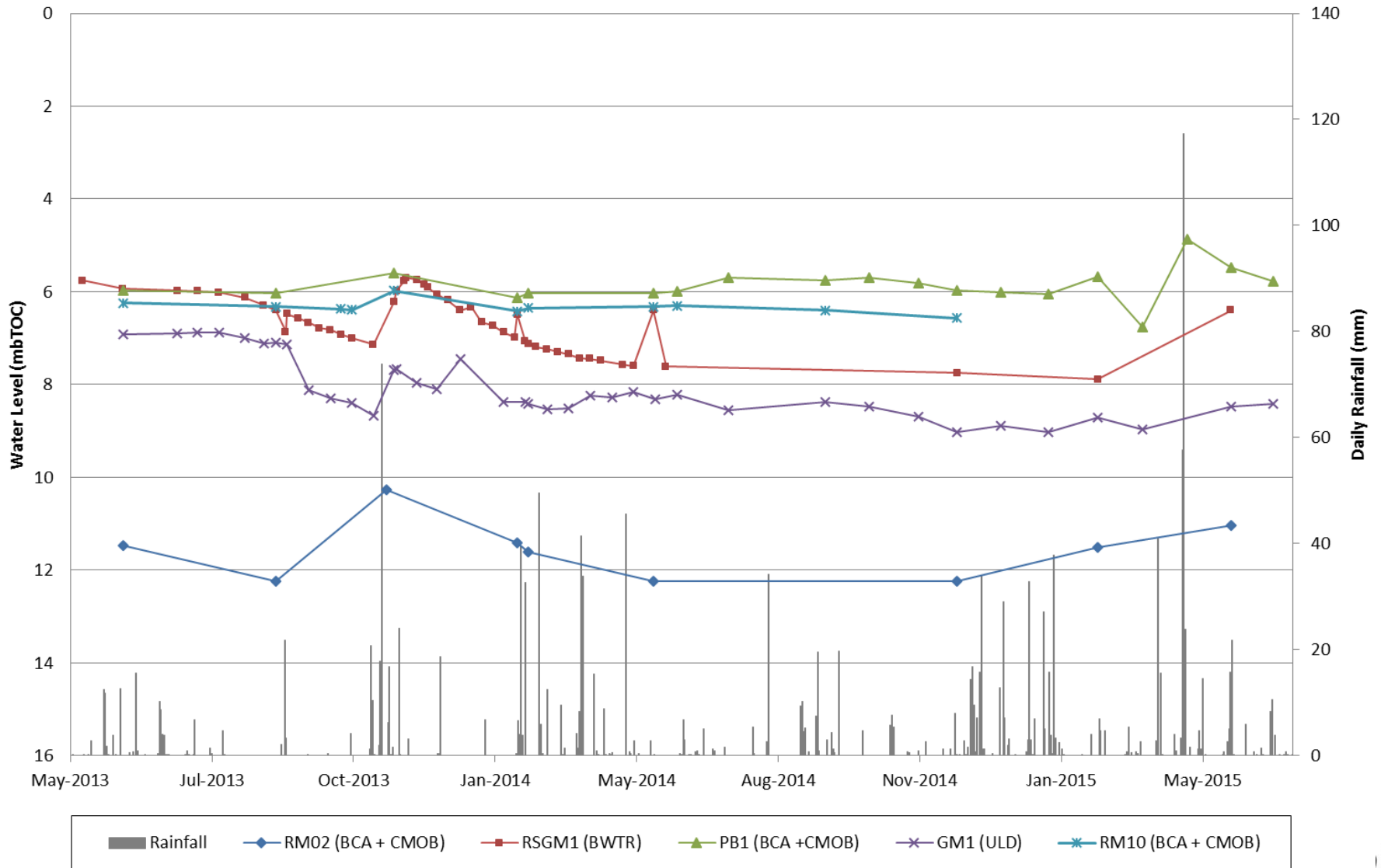


Surface Water Quality – EC

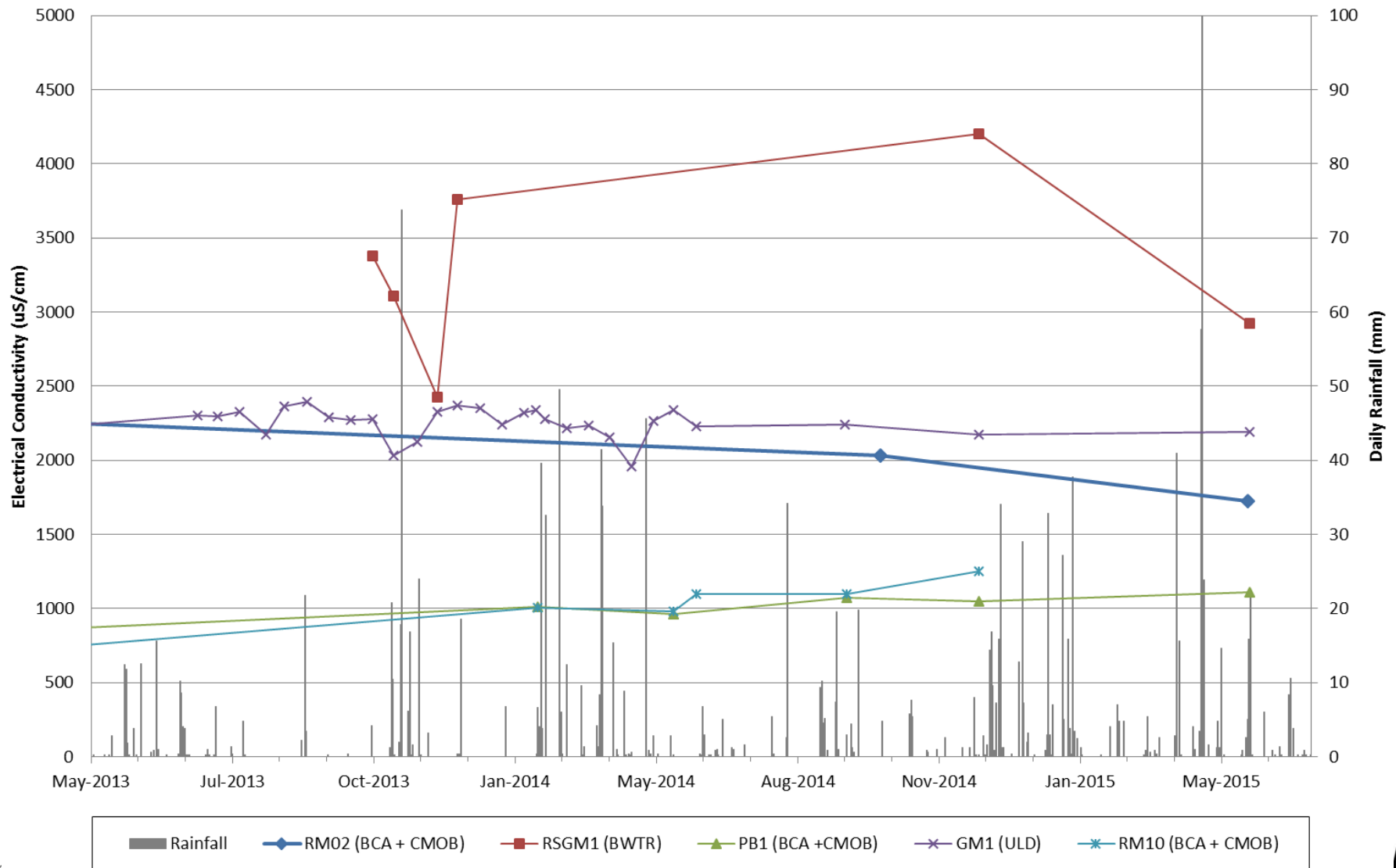
Hunter River Monthly Electrical Conductivity Levels 2014 - 2015



Groundwater – Standing Depth



Groundwater – EC



Noise Monitoring

Attended noise monitoring is conducted Monthly.

There were no exceedences for the reporting period however a period of elevated noise was noted during the May attended monitoring which has been investigated and controls put in place to prevent a recurrence or potential exceedence of noise limits.

Table 1
ACP Noise Monitoring Results – 19 June 2015 – Night

Location	Time	dB(A) Leq	Comments	WS (m/s)/ Direction	Inversion °C/ 100m	ACP Noise Sources
N2	10:40 pm	48	Traffic (48), trains (40), other mine (35), frogs (22), ACP inaudible (<25)	1.8/272	>+3	n/a
N3	10:23 pm	44	Traffic (41), trains (39), other mine (34), frogs (20), ACP inaudible (<25)	1.5/272	>+3	n/a
N4	10:03 pm	38	Traffic (37), frogs (30), other mine (25), ACP inaudible (<20)	1.2/261	>+3	n/a

What else is going on?

■ Weed Management

- Weeds along Bowmans Creek including Boxthorn and Castor Oil Plant.

■ Feral animal control

- Dog baiting and licences shooters

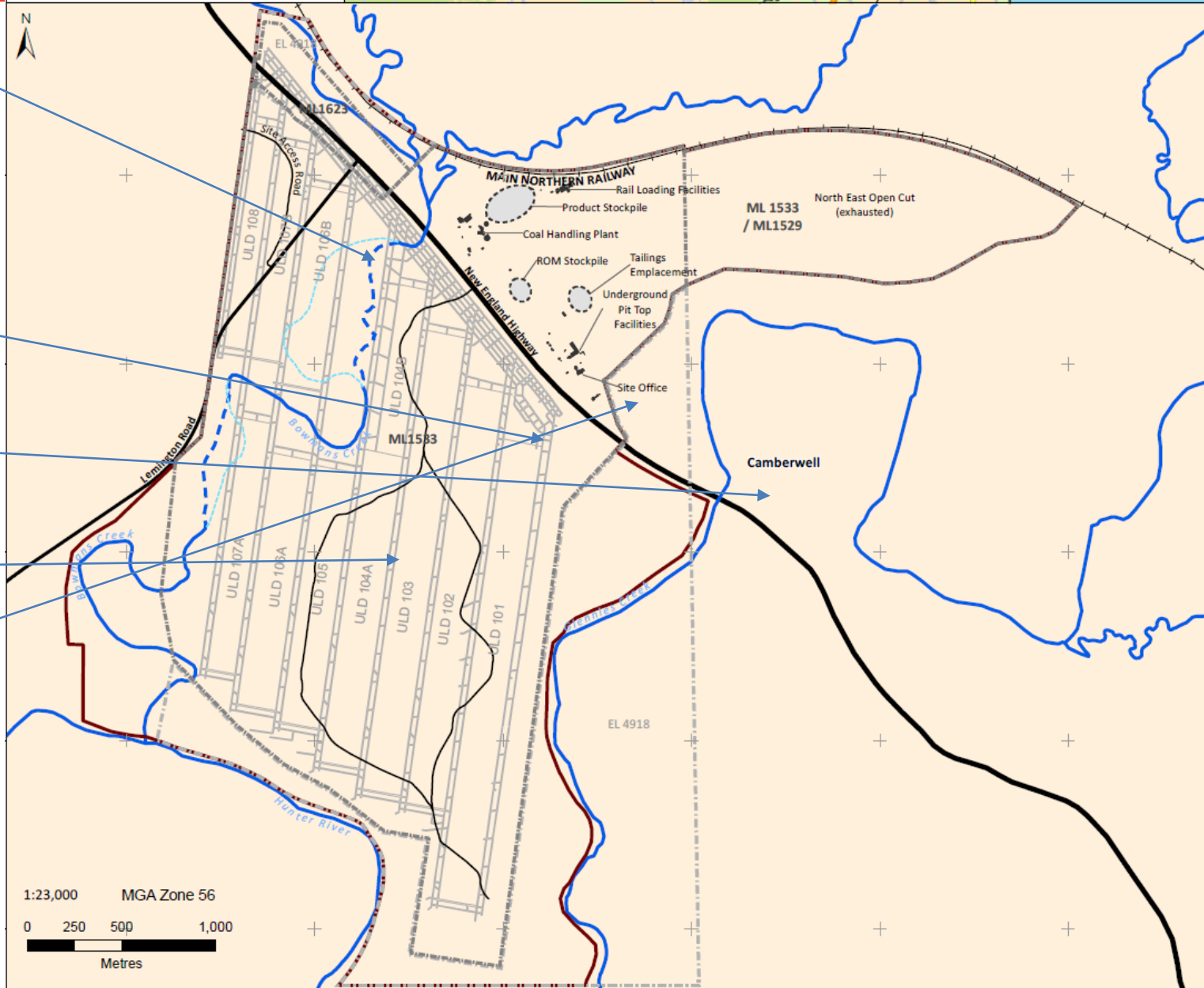
■ Interseam staple shaft construction

■ Wonnarua Mine Rehabilitation Services – 1 Alpha Street

■ Gas wells and pipework construction

■ Glennies Creek – Adopt a Spot

■ Change in personnel – Site Services Contractor (Paul Guy)



Boxthorn Mulching

- During May ACOL undertook a significant program of weed mulching to remove woody weeds such as boxthorn and castor oil plant
- Previous attempts to spray out boxthorn have had limited success especially on larger plants
- The forestry mulcher shredded the plants allowing access for basal spraying and removed the spiny plants



Boxthorn Mulching



Before



After

Boxthorn Mulching



Before



After

Interseam Staple Shafts

- Interseam staple shaft construction has been completed via raised bore drilling methods between the ULD and the ULLD seam.
- The shafts are approximately 30m long and 4-4.5m in diameter.
- They do not reach the surface but rather connect the two seams to facilitate ventilation.



Wonnarua Mine Rehabilitation (WMR)

- In 2003, Ashton Coal signed an agreement with the Wonnarua Nation Aboriginal Corporation.
- Ashton Coal agreed to promote and implement business opportunities for the Wonnarua People.
- WMR is a land management and nursery services company whose primary aim is to provide employment of Wonnarua and Aboriginal people in the Hunter Valley.
- WMR leasing 1 Alpha Street.
- On-going issues with security and plan to use Sea Container for storage!!!



Glennies Creek Road – Adopt-a-spot

- Ashton Coal joined forces with the Singleton Junior Rugby Club to clean up Glennies Creek road.
- On Sunday 19 July, a team of volunteers from the Singleton Junior Rugby Club collected 600 kg of rubbish from a 3.3 km stretch of Glennies Creek Road.



Any Questions?