



## Community Consultative Committee Meeting 70

### AGENDA

**Date:** Tuesday 3 September 2024

**Time:** 2:00 pm

**Location:** Moolarben Coal Complex Open Cut Main Board Room

#### Meeting Agenda:

1. Welcome and Acknowledgement of Country
2. Introductions
3. Apologies
4. Declarations
5. Confirmation of previous minutes (attached)
6. Business arising
7. Correspondence report (below)
8. Minutes and Terms of Reference
9. General business
10. Next meeting.

**MOOLARBEN COAL OPERATIONS - COMMUNITY CONSULTATIVE COMMITTEE  
MEETING No. 70**

**Date:** Tuesday, 3 September 2024  
**Time:** 2:10 pm  
**Location:** Moolarben Coal Open Cut Administration Board Room, Ulan  
**Attendance:** Independent Chairperson  
Deborah Palmer (DP)

Community Members

David Stokes (DS)  
Dr Julia Imrie (JI)  
Bev Smiles (BS)

Moolarben Coal Operations

Brian Wesley (BW)  
Jason Desmond (JD)  
Rebecca Shanks (RS)  
Morgan Yeatman (MY) *{Minute taker}*

Apologies

Aleisha Lonsdale (AL)  
David Lowe (DL)  
Helen Ungaro (HU)  
Mayor MWRC - Cr Des Kennedy (DK)  
MWRC Delegate - Cr Katie Dicker (KD)

***Meeting 70 Agenda and Presentation were provided to all meeting attendees.***

## 1. Welcome and Acknowledgement of Country

Deborah Palmer (DP) provided an Acknowledgement of Country and welcomed all attendees to the Moolarben Coal Operations (MCO) Community Consultative Committee (CCC).

DP acknowledged the previous independent chairperson Lisa Andrews time and efforts over the past years at the Moolarben CCC and thanked Lisa for her handover

## 2. Introductions

The group introduced themselves and provided a background on their involvement in the CCC.

## 3. Apologies

- Aleisha Lonsdale (AL)
- David Lowe (DL)
- Helen Ungaro (HU)
- Mayor MWRC - Cr Des Kennedy (DK)
- MWRC Delegate - Cr Katie Dicker (KD)

## 4. Declarations

DP declared that she is an Independent Chairperson, appointed by the DPHI and engaged by MCO to chair this meeting. She confirmed that all attendees have completed and provided to DP signed hard copies of a *Declaration of interest form for community consultation committees* (Department of Planning, Housing and Infrastructure, 2024) and *Community Consultative Committee code of conduct for committee members (excluding chairperson)* (DPHI, 2024).

## 5. Confirmation of previous finalised minutes

DP confirmed previous meeting minutes finalised and distributed on 26 August 2024.

## 6. Business arising

*Actions from Meeting 69:*

1. MCO to confirm where the UG4 subsidence monitoring line 'J' is in the UG4 EP.
2. MCO to confirm timing of OC4 proximity to Wollar Road.

Dealt with in the CCC Update below.

## 7. Correspondence report

As sent with the Meeting Notice on 26 August 2024 and including:

- 15/03/24 – Email to members with draft minutes for review
- 18/03/24 – Email to members with the Notification of the Submission of the OC3 Extension Project Amendment report and Submissions report to the Department of Planning. (Action Item 4 from meeting # 67).
- 28/03/24 – Email to members with final minutes & presentation.
- 02/04/24 – Email from RPS Group regarding IEA for MCO. Send to members for consideration.
- 16/04/24 – Email to RPS Group advising that no issues received for inclusion in IEA from CCC members.

- 07/05/24 – Email from MCO advising that the 2024 Annual Review has been approved by DPHI and is now available on the project website. Forwarded the members the same day.
- 24/05/24 – Email to members with the Meeting Notice & Agenda for this CCC.
- 03/06/24 – Email to members reminding members of the meeting and to RSVP.
- 27/06/24 – Email to members with final minutes & presentation.
- 26/08/24 – Email to members with correspondence of new independent chairperson, Deborah Palmer.
- 26/08/24 – Email to members with the Meeting Notice & Agenda for this CCC.
- 28/08/24 – Email from JI seeking information on UG4 underground water data
- 28/08/2024 – Email to members notifying of the approval of 2024 Independent Environment Audit of the Moolarben Coal Complex

## 8. CCC update

RS provided the CCC update on behalf of MCO. A copy of the presentation is attached to these minutes.

### Community Support Program

RS provided an update on the 2024 Community Support Program (CSP) and Community Events for the quarter, including the Community Support Program 2025 Call for Applications which close on 27 September 2024. Details on the website at [www.moolarbencoal.com.au](http://www.moolarbencoal.com.au)

### Operational update – Opencut

RS provided an operational update on the opencut. JI asked if the blue lines on the map were where mining was at currently and RS confirmed that was correct (Slide 5).

RS answered Action #2 – OC4 mining would be within 500 metres of Wollar Road in Quarter 3 of 2025.

### Operational update – Underground

RS provided an operational update on the underground (slide 6). JI queried why no correspondence was received from MCO for the management of Saddlers Creek Road under the Built Features Management Plan. RS replied that MCO had not started the process for stakeholder engagement for the roadworks as several Council approvals were required first.

BS asked what additional assessments are required under the Extraction Plan. RS replied the assessment conducted under the Extraction Plan included a review of approval conditions and additional assessments where required. BS asked what do the additional assessments entail for biodiversity. RS answered different assessments were undertaken to ascertain what flora and fauna would need to be managed. RS stated technical reports for the Extraction Plan can be found on the Moolarben website ([www.moolarbencoal.com.au](http://www.moolarbencoal.com.au)). BS asked how much of the assessment is in the field. BS asked which company is undertaking the technical reports. RS stated listed the studies undertaken in the field and the specialists, all who are approved by DPHI. JI asked if the ecologists are assessing the presence of Groundwater Dependent Ecosystems as part of the Extraction Plan. RS confirmed they were.

RS answered Action #1 – Confirming ‘J’ line was a typo and the line was in UG1.

RS answered JI questions that were received on notice ahead of the meeting – Groundwater data was supplied in hardcopy to JI in the meeting. PZ232 has been undermined with no plans to replace the monitoring bore. PZ-A has not been constructed and does not yet have a number. PZ192 and PZ193 have declined as predicted by the groundwater model since the start of UG4 and would be expected to continue declining. A trigger does not apply to these bores due to the model predictions **(Action Item 1)**

### Exploration update

RS provided an update on exploration (slide 7). BS asked if all exploration activities were being conducted under existing approvals. RS stated MCO exploration would be conducted in part under existing approvals and in part under a new assessable prospecting operation (APO) **(Action Item 2)**.

### **Environmental monitoring**

RS provided an update on environmental monitoring (slides 8 – 19).

RS provided an update on water discharge and stream flow. BS asked what SW02 and SW22 monitoring sites were upstream and downstream of. JI answered The Drip.

RS provided an update on surface water quality. JI asked if MCO sample the water of Moolarben Dam. RS confirmed MCO does not sample Moolarben Dam. JI stated the Goulburn River flow became very turbid 2-4 days after recent rain events <25 mm rain. JI requested this is recorded in the minutes and MCO investigates this recent increase in river turbidity following rainfall events to determine if MCO are the source of the muddy runoff. JI noted she had reported this to the MCO complaint line on the 25 August but have not received a call back from MCO (**Action Item 3**).

RS provided an update on air quality and blast results. BS queried why does MCO think dust results are rising in 2024. RS stated dry conditions were contributing to increasing average results.

RS provided an update on noise monitoring and community complaints. BS asked if there has there been an increase in complaints since July 2024. RS stated no.

### **Rehabilitation**

RS provided a rehabilitation update. BS asked if the mine closure plan sets the requirements for rehabilitation. RS confirmed they did. JD further explained the rehabilitation management and forecast planning process. BS requested information on the size of OC4 (**Action Item 4 and 5**).

### **Biodiversity**

RS provided a biodiversity areas update. BS asked if more detail can be provided on where threatened species were found in offsets. RS stated birds are transient and were found in different areas at different times. RS stated the properties where threatened flora has been recorded- property 24/25, Redhills and Elwards.

### **OC3 Extension**

RS provided an update on the OC3 modification (slide 22). BS asked if MCO has seen the Independent Panel report. RS stated MCO has not seen a response at this time and does not have a timeline for when it is expected.

### **NSW EnergyCo Transmission Infrastructure**

RS provided information on the NSW EnergyCo transmission infrastructure modification (slide 23) . BS asked if EnergyCo need to offset the MCO offset as the transmission line goes through this area. RS confirmed yes. BS asked if this was a modification that needs to go to public exhibition. RS confirmed no – the size is too small. JI noted that the transmission infrastructure is being planned for unmined land.

### **Employment update**

RS provided an employment update (slide24).

## **9. General Business**

DP asked if there were any general business from members.

JI queried the intersection upgrades at Saddlers Creek Road and whether she would be consulted. RS confirmed planning was being undertaken with consultation including with JI in future. JI requested her concerns be recorded in the minutes regarding road access and 2 m predicted subsidence from UG4 panels that potentially affect the only access to her family home and rural retreat business. BW noted this was a condition of consent and stated

other public and mining roads have been successfully managed during subsidence and Saddlers Creek Road would be the same.

DS asked if there are outstanding positions at MCO. BW stated MCO was actively recruiting with current numbers required lower than historically.

BS asked how much coal was stockpiled in the opencut and the CHPP. BW replied that coal was fed to the CHPP as operationally required. BS asked if MCO stockpiled as much coal as they like. JD stated MCO Project Approvals dictate what MCO can stockpile and where. BS asked whether MCO had spontaneous combustion issues. BW replied that active management of onsite stockpiles meant spontaneous combustion was not an issue.

BS asked if there were requirements to submit reports under the LW 401-408 EP. RS stated most reporting requirements are covered in the annual report and a separate report at the end of LW404 was submitted to DPHI.

Jl asked how drawdown of the upper groundwater system 250-300 metres outside of the UG4 panels footprint and to the east in Goulburn River national park will be monitored and trigger levels determined?. RS stated monitoring bores along the eastern length of UG4 record groundwater levels.

BS asked what information collected from the LW 401-408 Extraction Plan is included in the LW 409-414 Extraction Plan. RS stated all LW401-408 monitoring results would feed into the technical reports. BS asked if monitoring reports were available online. RS stated they are not provided to DPHI, we refer to them in the annual report. The annual report is provided and presented to the CCC each year once it is approved. Link to the AR on the website: <https://www.moolarbencoal.com.au/page/environment/annual-environmental-management-reports/>

BS stated MCO scope 1 and 2 emissions appeared to be increasing over the last 6 years. BS asked if MCO could provide an update on emissions and if there was a plan to reduce emissions. RS stated MCO was in the bottom emitters in the country, however as the mine is still expanding its operational area and fleet as well as the length of hauling the volume of emissions have increased. BS asked if MCO was a low emitter based on methane. RS confirmed MCO is a very low methane site. BS asked how methane is measured. RS noted that drill samples are taken pre mining to be able to measure pre mining levels.

DP noted the Terms of Reference for the CCC will need to be amended to include DP as the Chairperson. DP also clarified with the CCC the preferred meeting time is 2:00pm not 1:00pm as is in the current Terms of Reference. The CCC agreed that DP should make these changes as suggested.

**10. Next Meeting:** 3 December 2024, on site at 2:00 pm.

Meeting closed at 3:14 pm with DP thanking members for their attendance and participation.

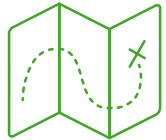
**Action Items:**

Item	Action	Responsibility
1	Provide Triassic triggers for UG4	MCO
2	How many exploration sites are planned for Exploration in the EL6288 current APO.	MCO
3	Complete an investigation into the Goulburn River water turbidity following rainfall events.	MCO
4	How many hectares are in the OC4 rehabilitation area depicted.	MCO
5	Provide slide depicting rehabilitation planning documents and how they feed into each other.	MCO
6	Terms of Reference be updated to include DP as Chairperson and meeting time to commence at 2:00pm	DP

# Deborah Palmer



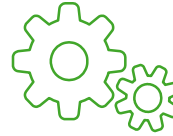
**Background in law;  
community and  
stakeholder engagement**



**25 years of experience**



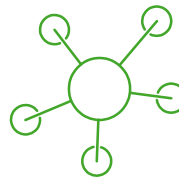
**Part of the Department of  
Planning's pool of CCC  
Chairpersons**



**Independent Chairperson for  
multiple Community Consultative  
Committees (CCCs):**

- **Clarence Colliery CCC**
- **Western Region CCC**
- **Dendrobium Mine CCC**
- **Appin Mine CCC**

**Independent Chairperson for the  
Eraring Community Forum**



**Looking forward to working  
with you**

# Community Consultative Committee Update

September 2024

Moolarben Coal Operations





# 2024 Community Support Program (CSP)

Yancoal-Moolarben Coal CSP Events for the prior quarter included:

- Max Potential
- Mudgee Running Festival



# 2025 CSP - Call for Applications



*em* POWERING  
COMMUNITY  
SUPPORT

## NEED FUNDING TO HELP IMPROVE OUR LOCAL COMMUNITY?

**Yancoal Community Support Program  
call for applications**

Moolarben Coal Operations is a proud and active member of the local community. Yancoal's 2025 Community Support Program offers community groups the opportunity to apply for funding to support projects, events and initiatives that help make a genuine positive difference to the Mid-Western Region.

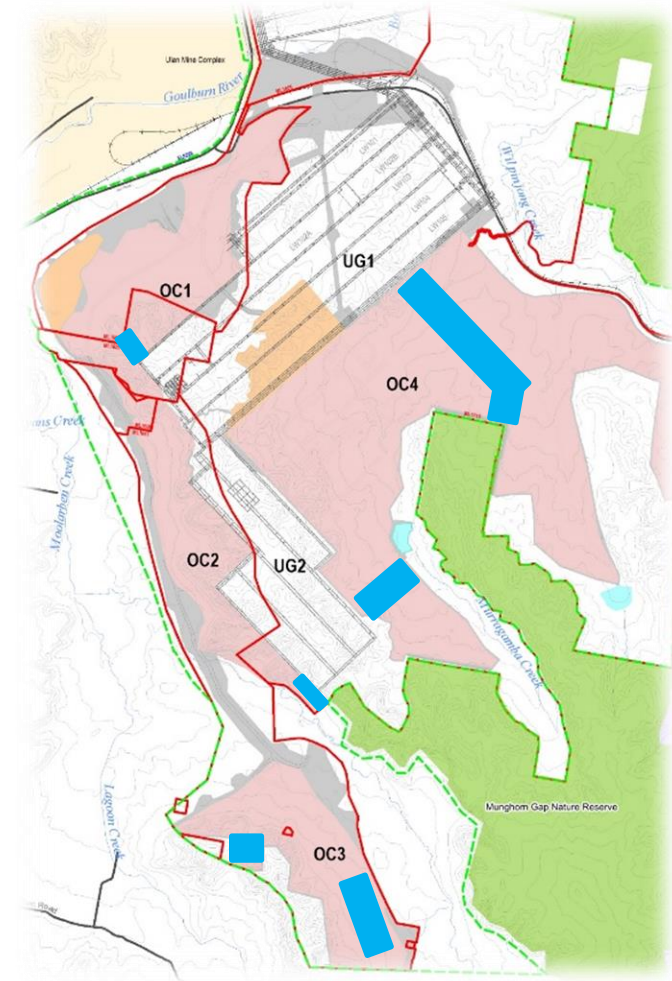
If you have a project or idea with the potential to benefit others across the areas of health, community, environment, arts, culture, education or training, please visit: [www.moolarbencoal.com.au](http://www.moolarbencoal.com.au)

**Applications close  
on 27th September 2024**



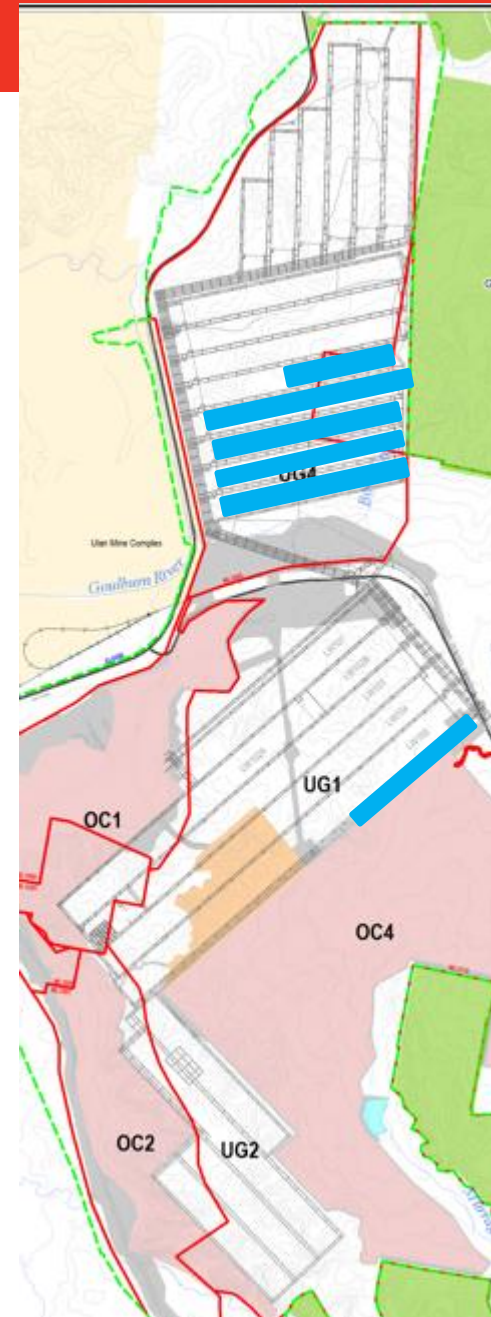
# Operational Update - Opencut

- Open cut operations in OC1, OC2, OC3 & OC4.
- Water Treatment Plant operations continue.
- 2023 Annual Review approved by DPHI.
- 2021-2024 Independent Environmental Audit completed & approved by DPHI.



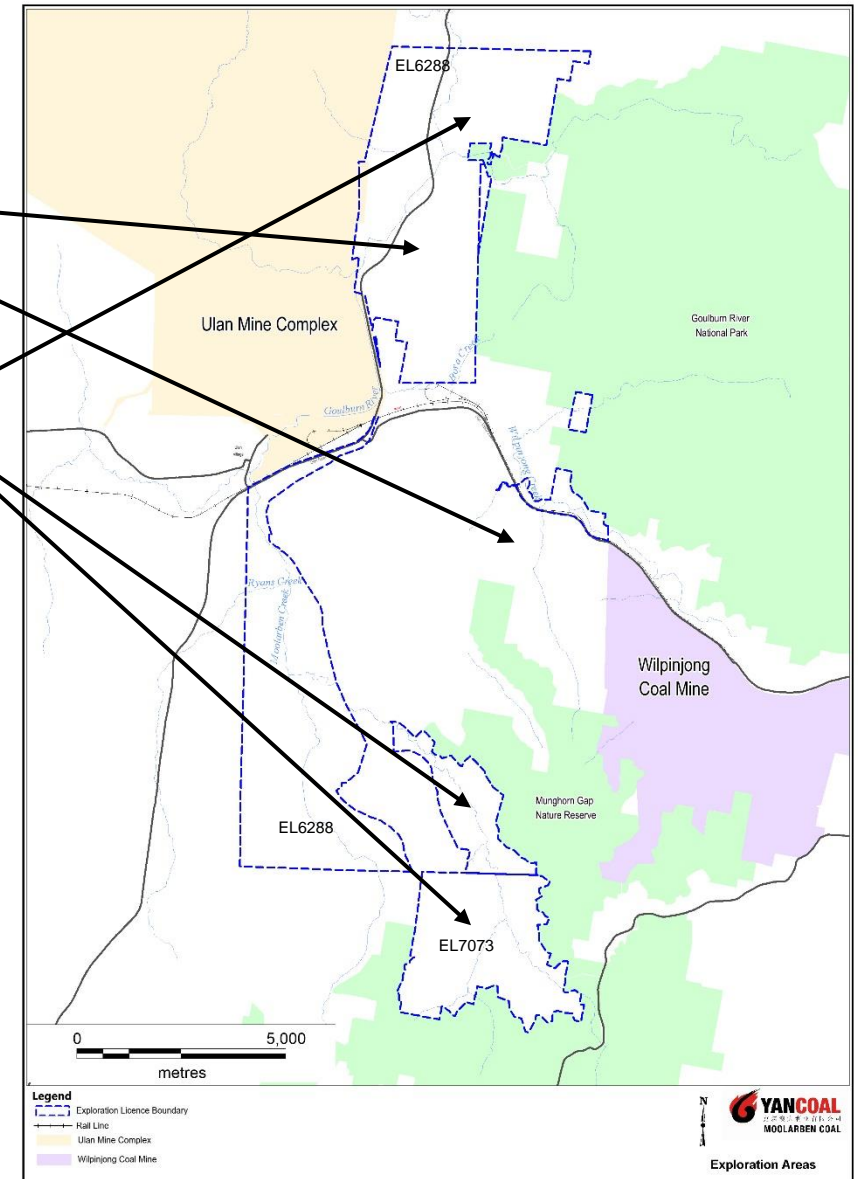
# Operational Update - Underground

- Longwall operations in LW405.
- Continued underground development in UG4 and commencement towards UG2.
- MCO has commenced preparation of Extraction Plan for the next set of Longwalls, LW409-414.
- The LW409-414 Extraction Plan is currently scheduled to be lodged in Q4 2024.
- The extraction of LW409-414 would indicatively occur between 2026 - 2028.



# Exploration Update

- Drilling – Planned to continue in ML1715 and ML1605
- Drilling is planned to commence and continue in EL6288 and EL7073
- Rehabilitation and monitoring activities have continued during the period.







# Environmental Monitoring








## Monitoring network

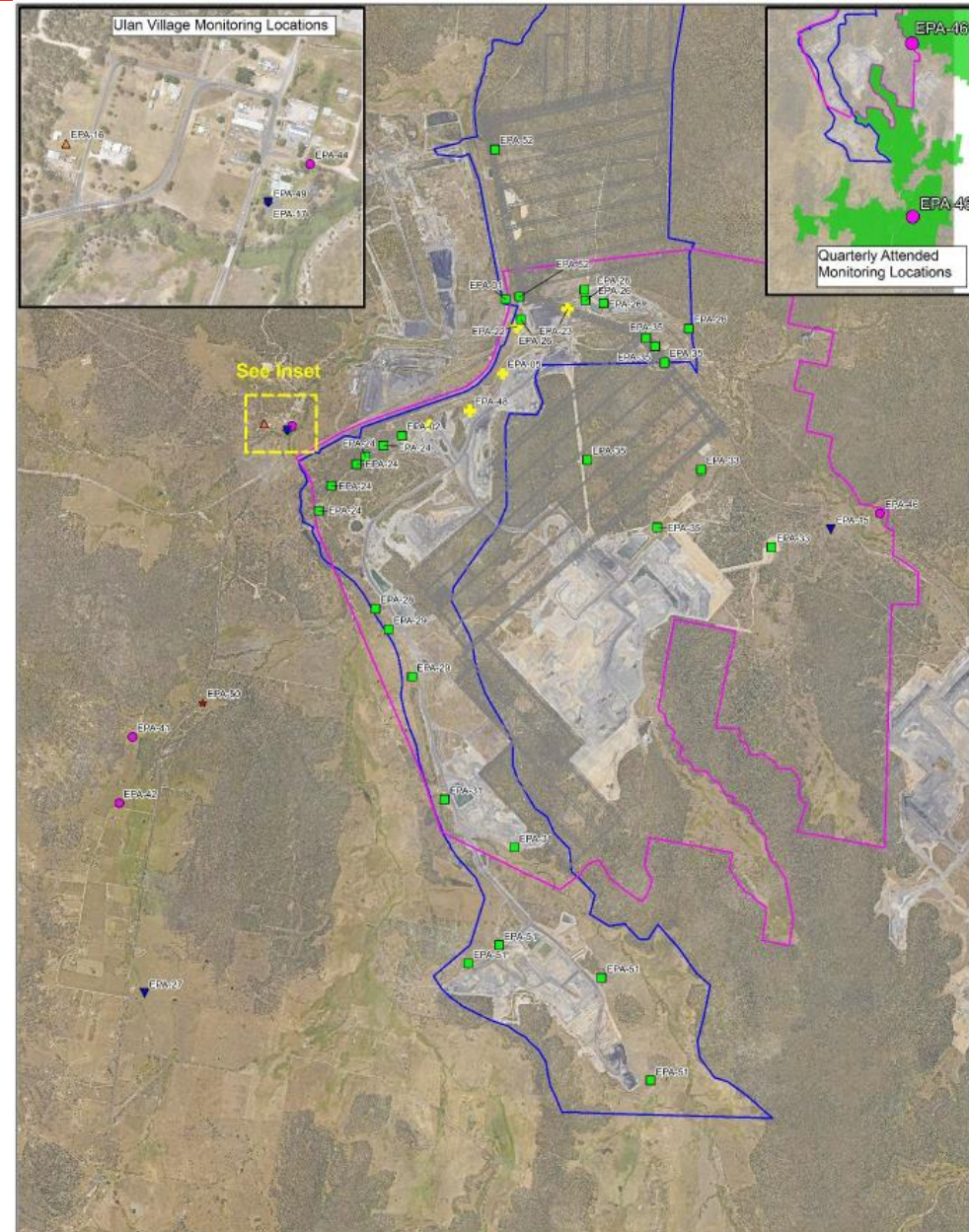
- Water;
- Air Quality;
- Blasting;
- Noise; and
- Meteorology.

### Legend

	Stage 1 DA Boundary
	Stage 2 DA Boundary
	Approved Underground Workings
	Approved_Underground_Workings

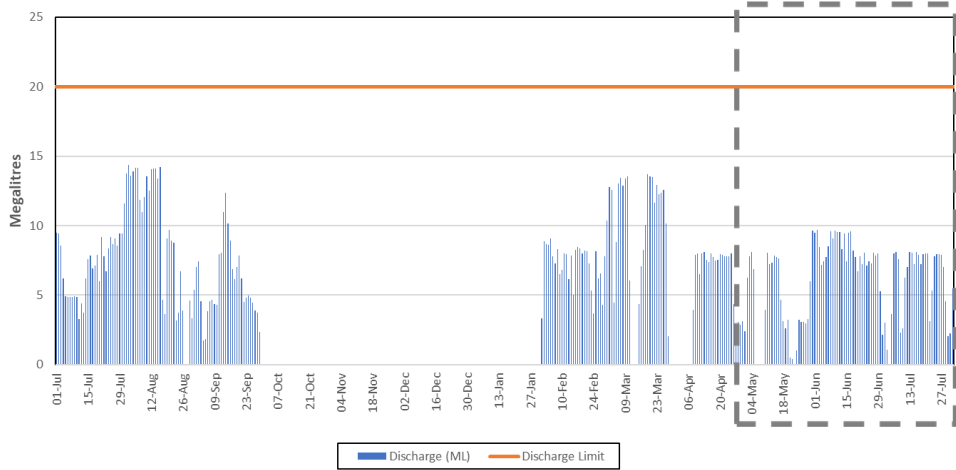
### EPL Monitoring Locations

	Real-time TEOM
	Effluent Monitoring
	Water Discharge Point
	Attended Noise Monitor
	Blast Monitor
	Weather Station
	PM10 Monitor

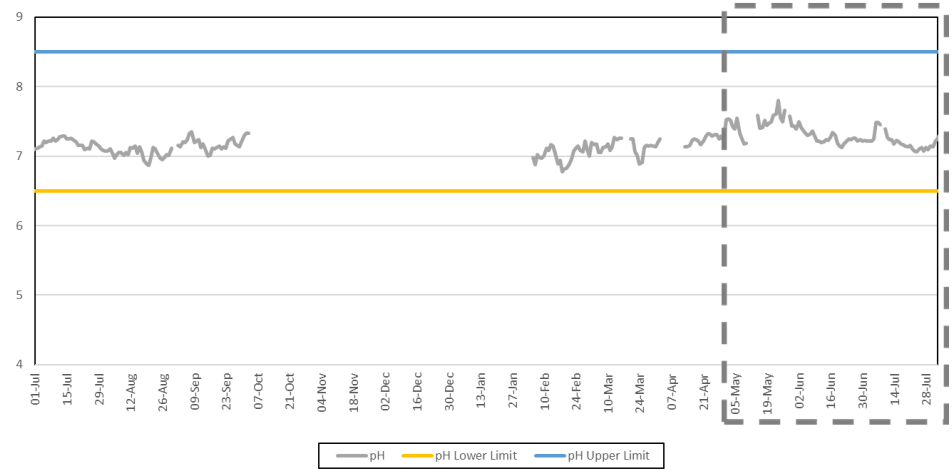


# Water Release – EPA01

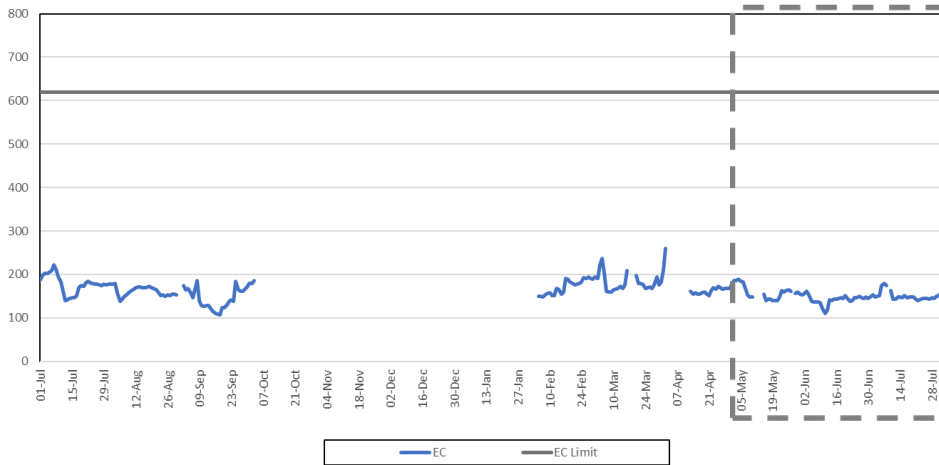
EPA 1 Daily Discharge Volumes  
July 2023 - July 2024



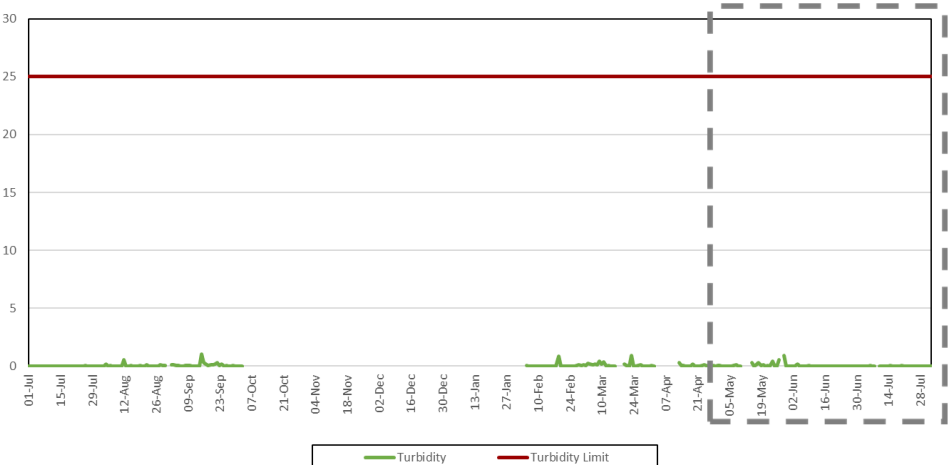
EPA 1 Daily Average pH  
July 2023 - July 2024



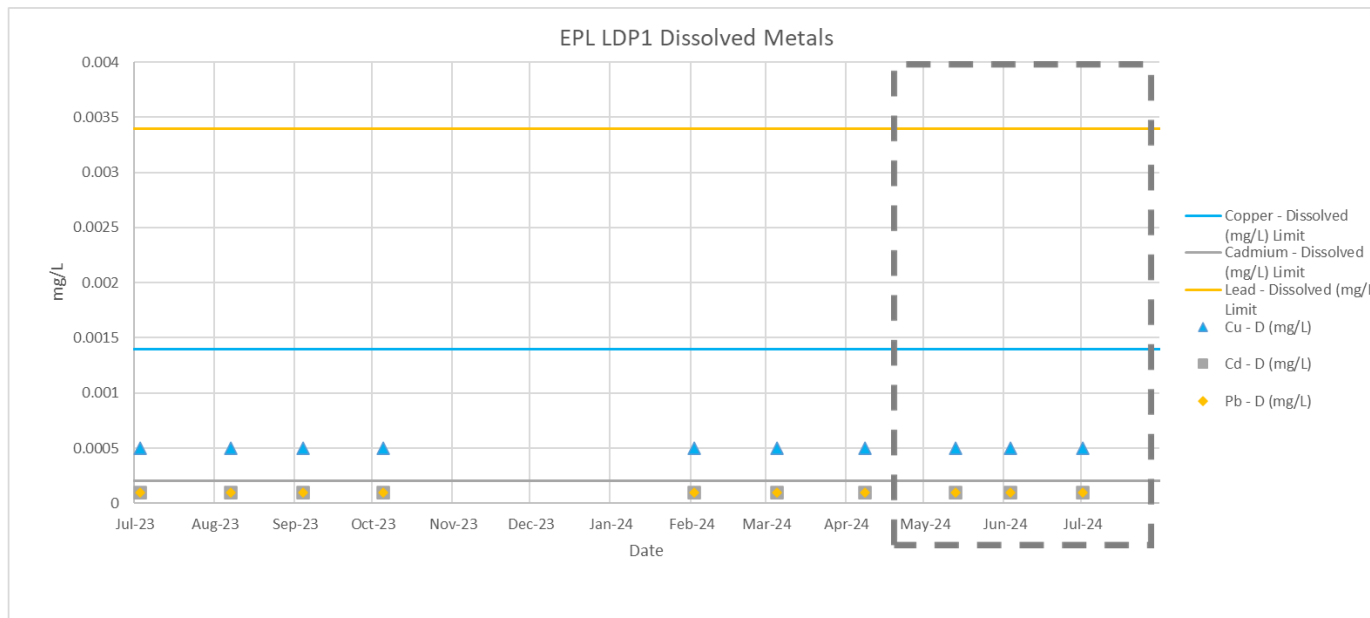
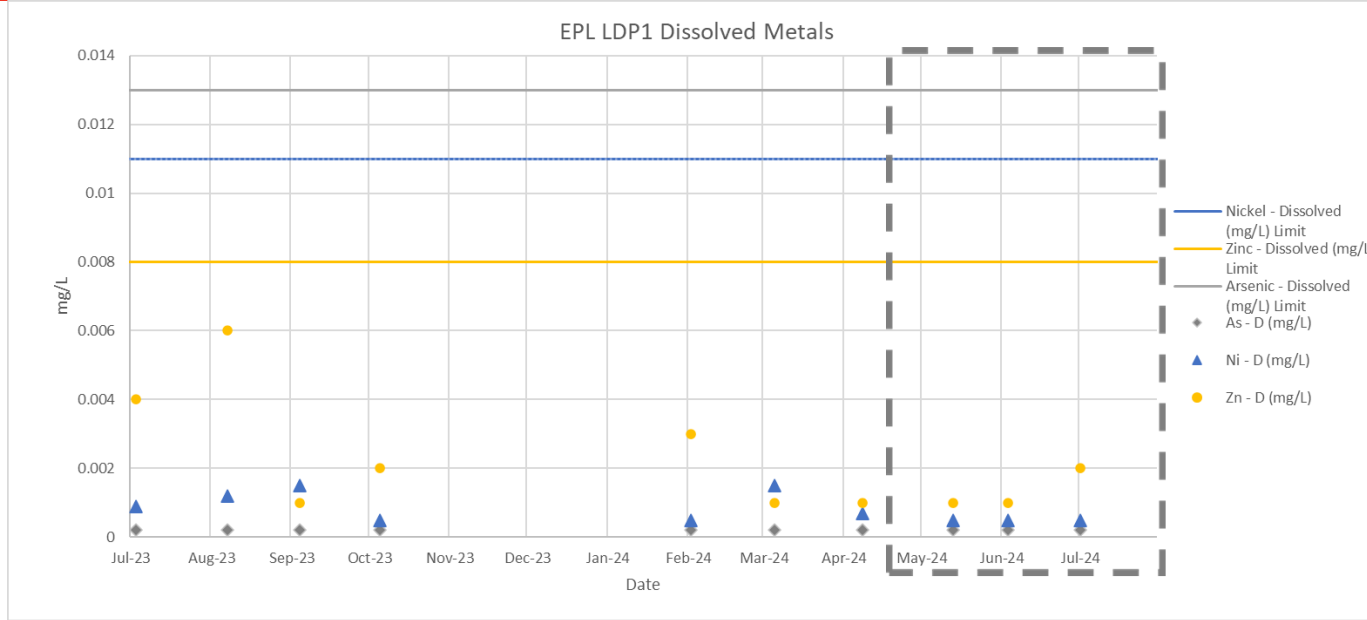
EPA 1 Daily Average EC  
July 2023 - July 2024



EPA 1 Daily Average Turbidity  
July 2023 - July 2024

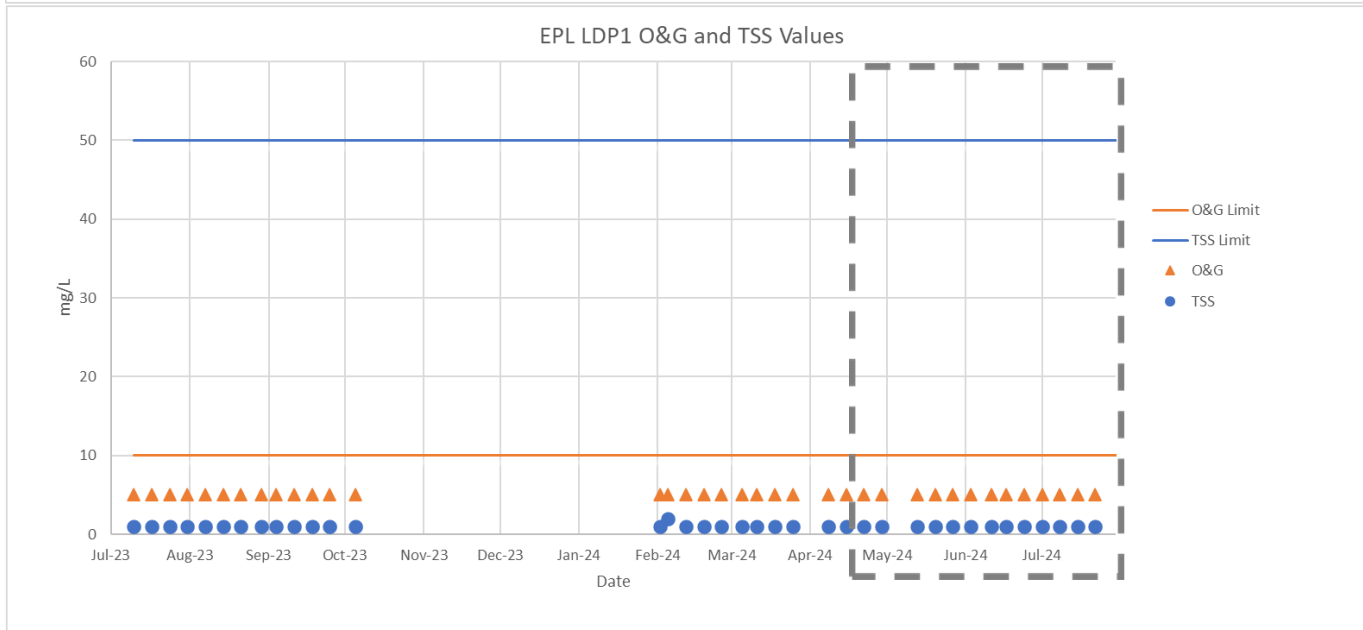
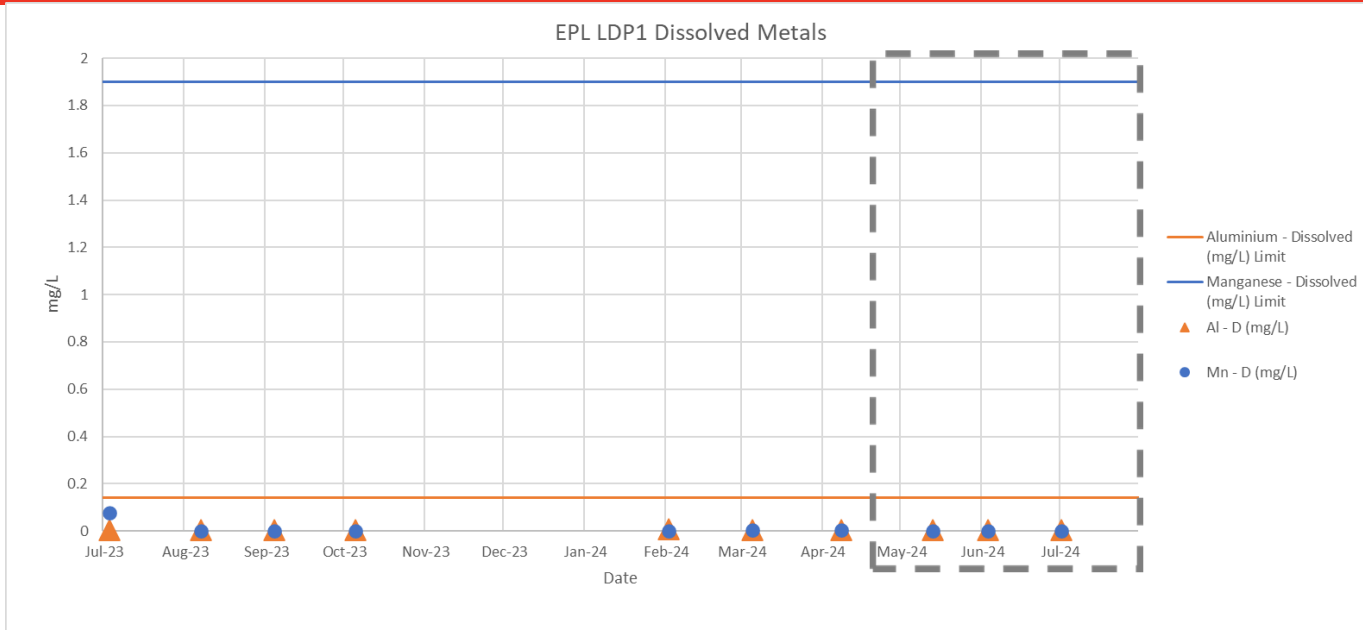


# Water Release – EPA01

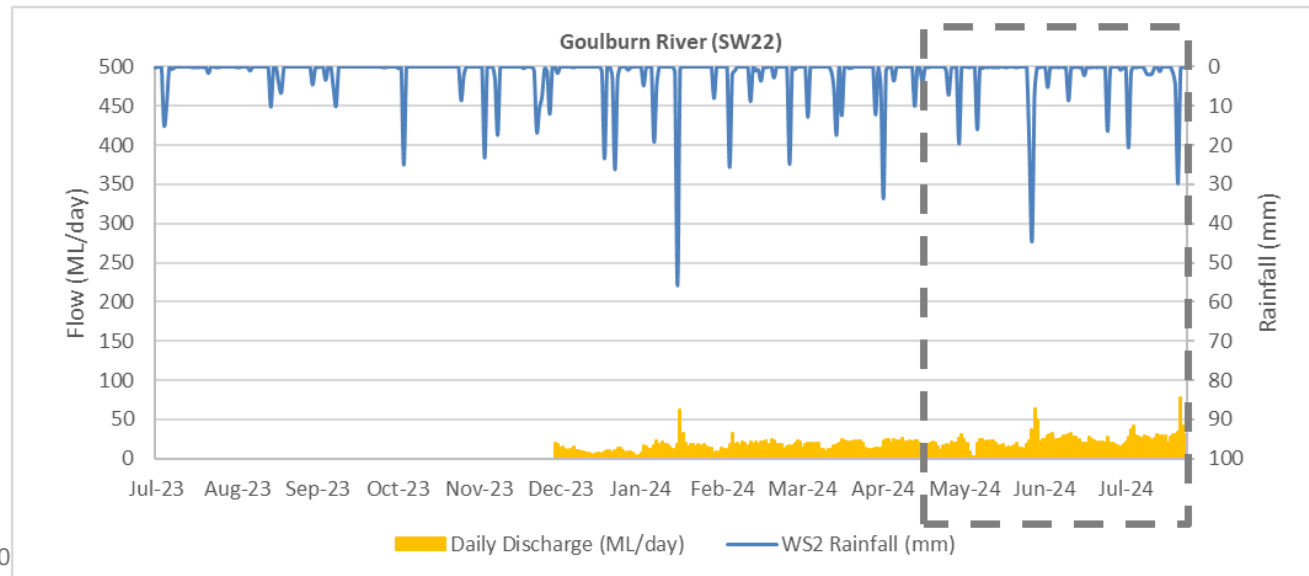
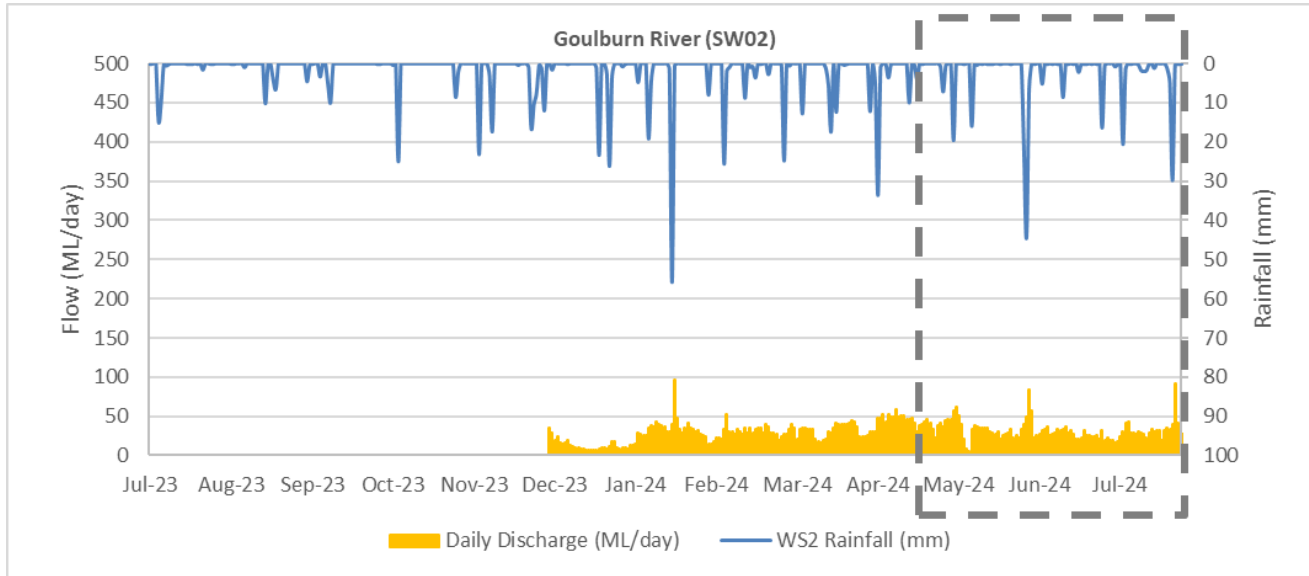




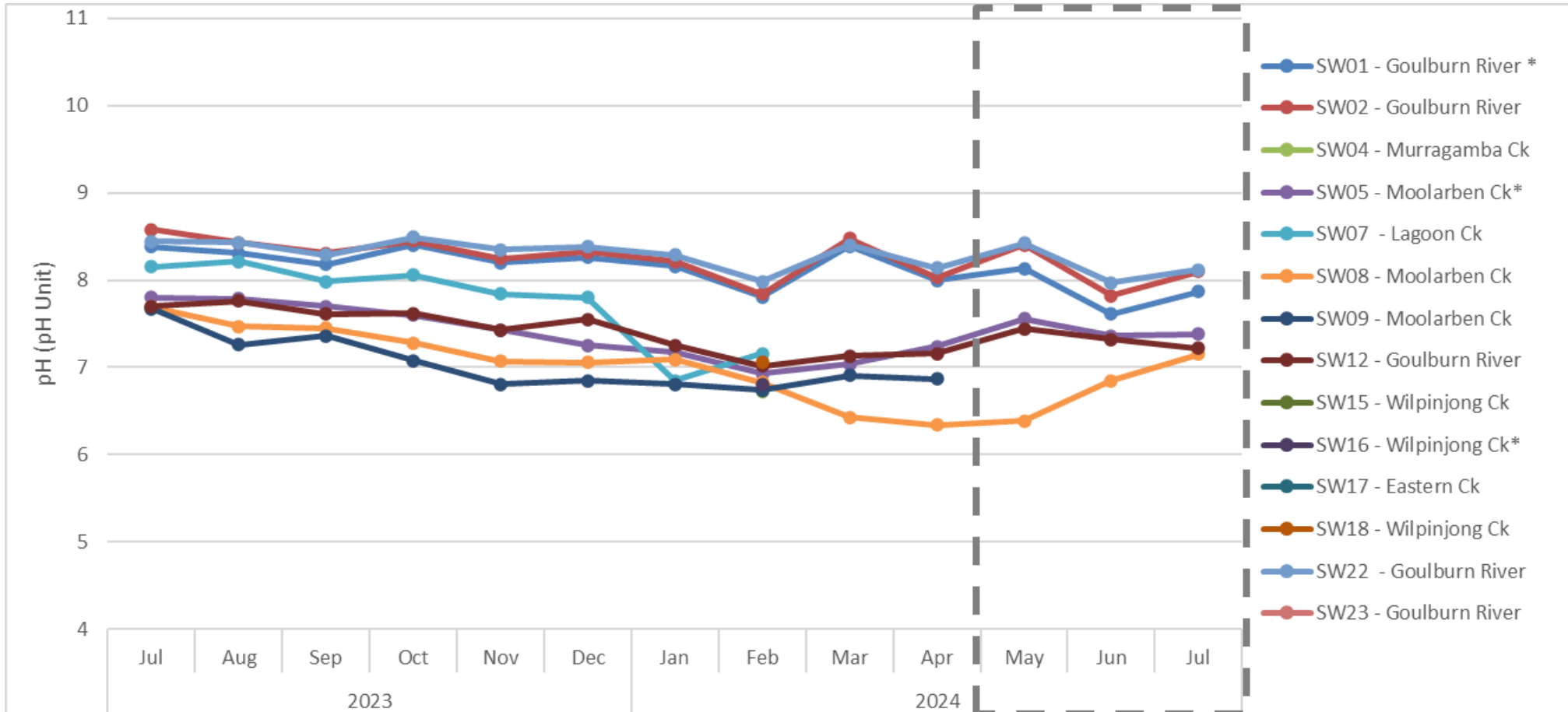
# Water Release – EPA01



# Stream Flow – Goulburn River

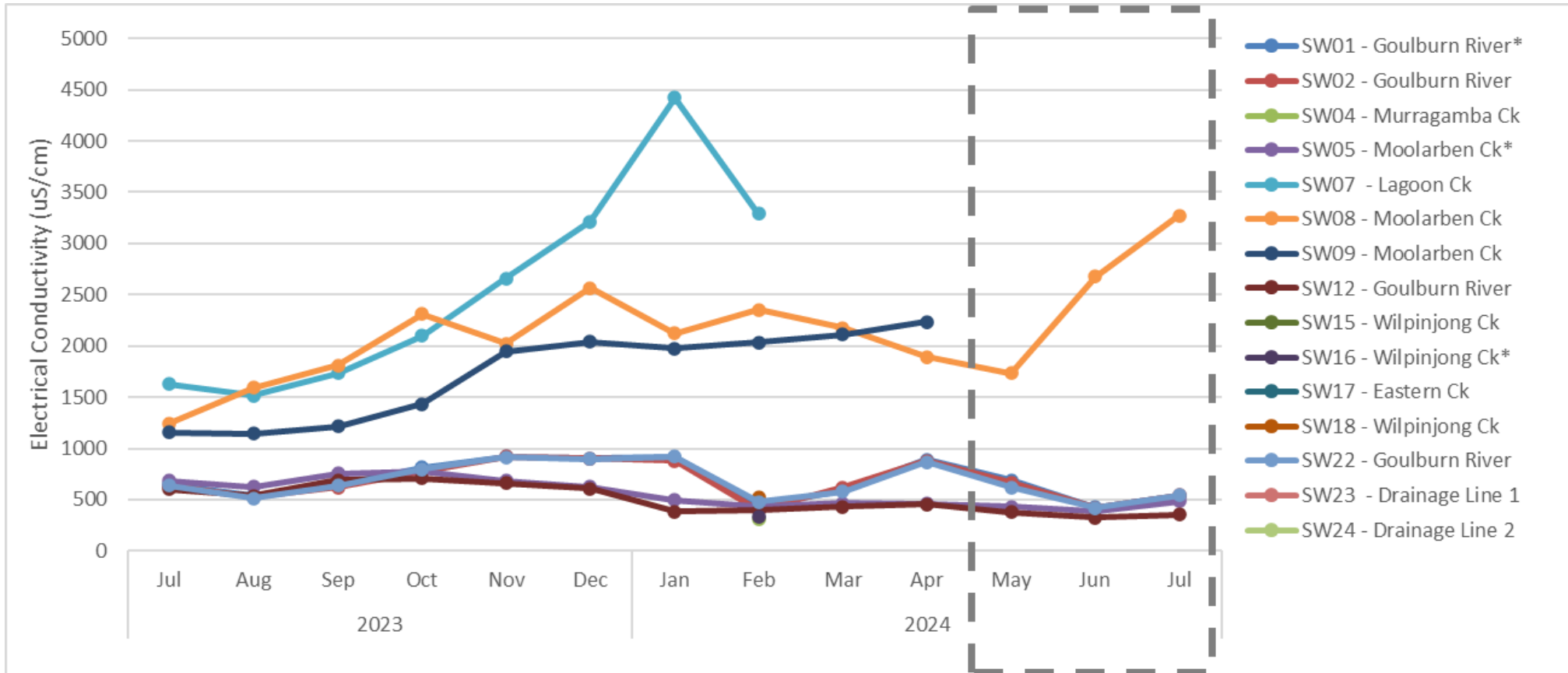


# Water Quality - pH



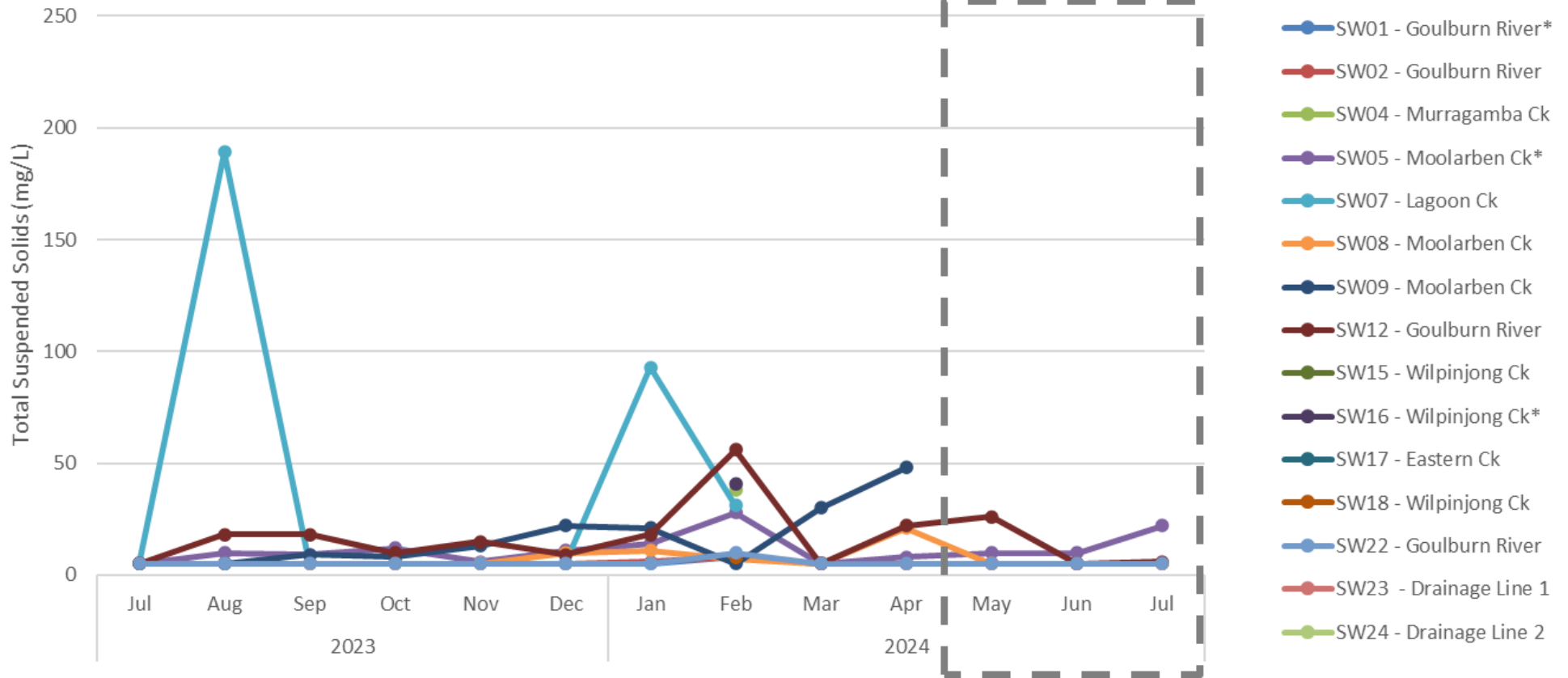
\* Monitoring Locations with associated trigger investigation levels as per the Surface Water Management Plan

# Water Quality - EC



\* Monitoring Locations with associated trigger investigation levels as per the Surface Water Management Plan

# Water Quality - TSS



\* Monitoring Locations with associated trigger investigation levels as per the Surface Water Management Plan

# Air Quality

Site	July 2023 PM10 Annual Average ( $\mu\text{g}/\text{m}^3$ )	July 2024 PM10 Annual Average ( $\mu\text{g}/\text{m}^3$ )	Air Quality PM10 Annual Average Criteria ( $\mu\text{g}/\text{m}^3$ )
TEOM 01	13.2	17.3	25.0
TEOM 04	12.0	14.7	25.0
TEOM 07	8.4	10.5	25.0

Site	July 2023 PM2.5 Annual Average ( $\mu\text{g}/\text{m}^3$ )	July 2024 PM2.5 Annual Average ( $\mu\text{g}/\text{m}^3$ )	Air Quality PM2.5 Annual Average Criteria ( $\mu\text{g}/\text{m}^3$ )
TEOM 07	4.2	4.6	8.0

Monthly monitoring reports are available on our website:

[www.moolarbencoal.com.au/page/environment/environmental-monitoring/](http://www.moolarbencoal.com.au/page/environment/environmental-monitoring/)

# Blasting

Site	May 2024 Blast Overpressure (dBL)		June 2024 Blast Overpressure (dBL)		July 2024 Blast Overpressure (dBL)		Limit (dBL)
	Min	Max	Min	Max	Min	Max	
BM1 Ulan School	78.3	120.3	83.8	103.8	83.2	104.0	115/120
BM5 Ridge Rd	80.9	113.0	79.7	110.5	81.1	107.7	115/120
BM8 Moolarben Rd	78.1	112.1	86.6	108.8	80.6	109.6	115/120

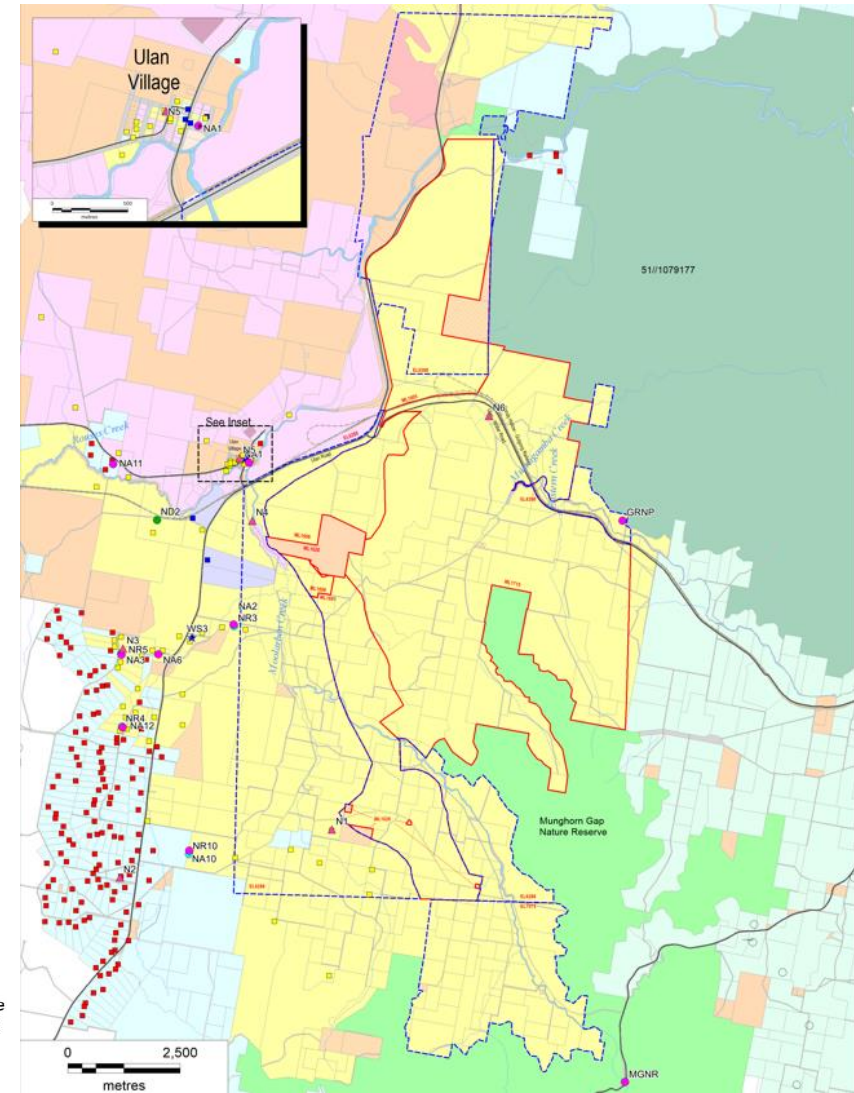
Site	May 2024 Ground Vibration (mm/s)		June 2024 Ground Vibration (mm/s)		July 2024 Ground Vibration (mm/s)		Limit (mm/s)
	Min	Max	Min	Max	Min	Max	
BM1 Ulan School	0.04	2.69	0.04	0.39	0.05	0.76	5/10
BM5 Ridge Rd	0.02	0.50	0.08	0.48	0.05	0.56	5/10
BM8 Moolarben Rd	0.03	0.49	0.05	0.38	0.01	0.60	5/10

Monthly monitoring reports are available on our website:

[www.moolarbencoal.com.au/page/environment/environmental-monitoring/](http://www.moolarbencoal.com.au/page/environment/environmental-monitoring/)

# Noise Monitoring

- All monthly & quarterly attended noise monitoring within criteria.
- Continued implementation of:
  - Planning controls - scheduling
  - Engineering controls - attenuation
  - Operational controls - bunds/screens
  - Real-time monitoring triggers
  - Real-time response protocols



**LEGEND**

- Exploration Licence Boundary
- Mining Lease Boundary
- Rail Line
- Watercourse

**Ownership**

- Yancoal
- Ulan Coal Mines Limited
- Wilpinjong Coal Mine
- Privately Owned
- Crown
- Commercial

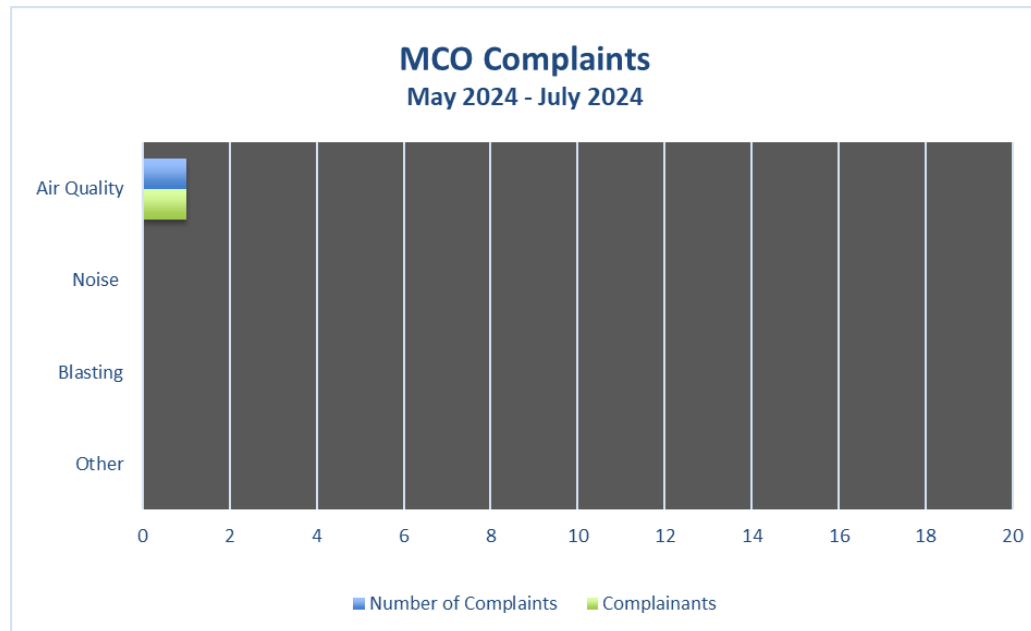
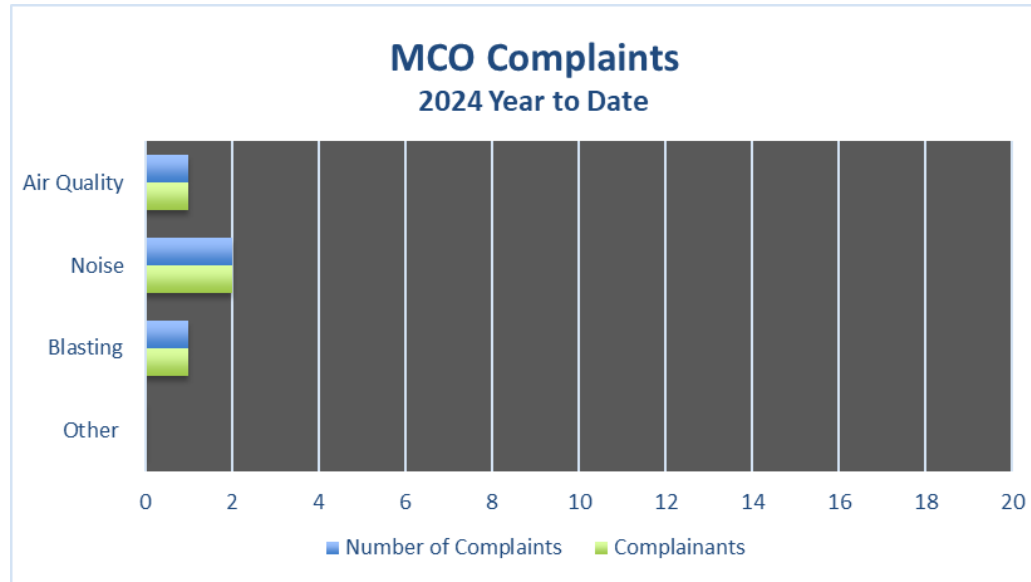
- National Park
- Nature Reserve
- Mine Owned Receiver
- Private Receiver
- Commercial Receiver

**Noise Monitoring Locations**

- Real-time Noise Monitoring Site
- Attended Noise Monitoring Site
- Directional Receiver
- Background Noise Monitoring
- Weather Station



# Community Complaints



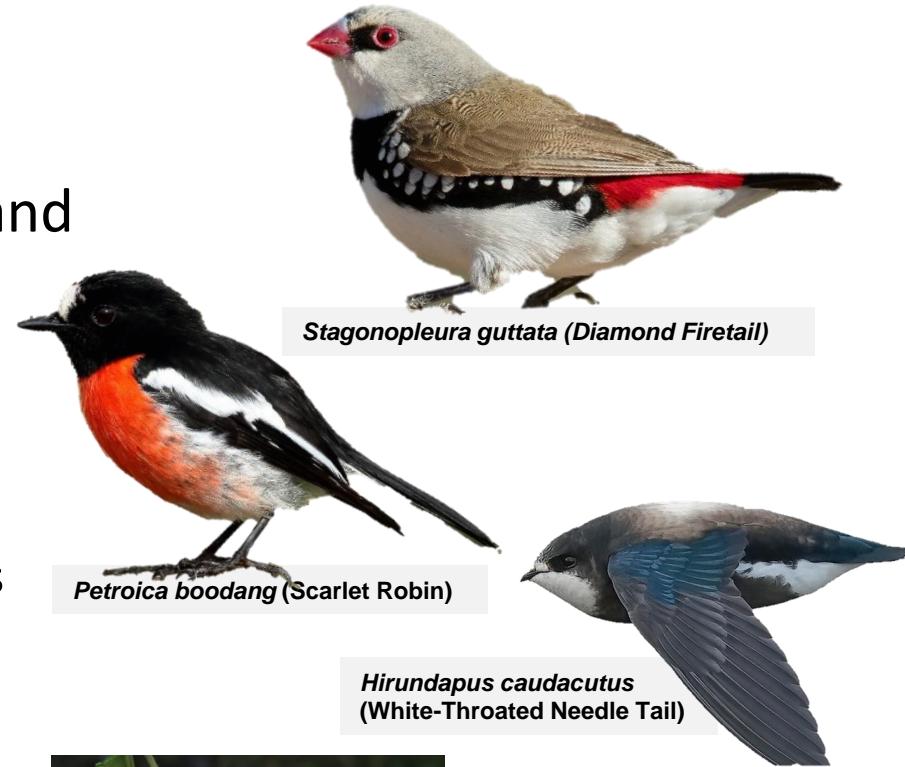
# Rehabilitation Update

- Landform establishment is in progress in OC2, OC3 and OC4.
- Rehabilitation maintenance works are continuing.



# Biodiversity Offset Areas Update

- Offset maintenance works have continued, with feral animal baiting and weed management programs continuing.
- Autumn monitoring completed
  - Identified numerous threatened species
    - Fauna e.g. Glossy Black-Cockatoo, Diamond Firetail, White-Throated Needle tail, Scarlet Robin, Flame Robin, Speckled Warbler etc.
    - Flora e.g. Ausfeld's Wattle and *Androcalva procumbens*
- Spring monitoring to start in October



*Stagonopleura guttata* (Diamond Firetail)

*Petroica boodang* (Scarlet Robin)

*Hirundapus caudacutus*  
(White-Throated Needle Tail)



*Androcalva procumbens*



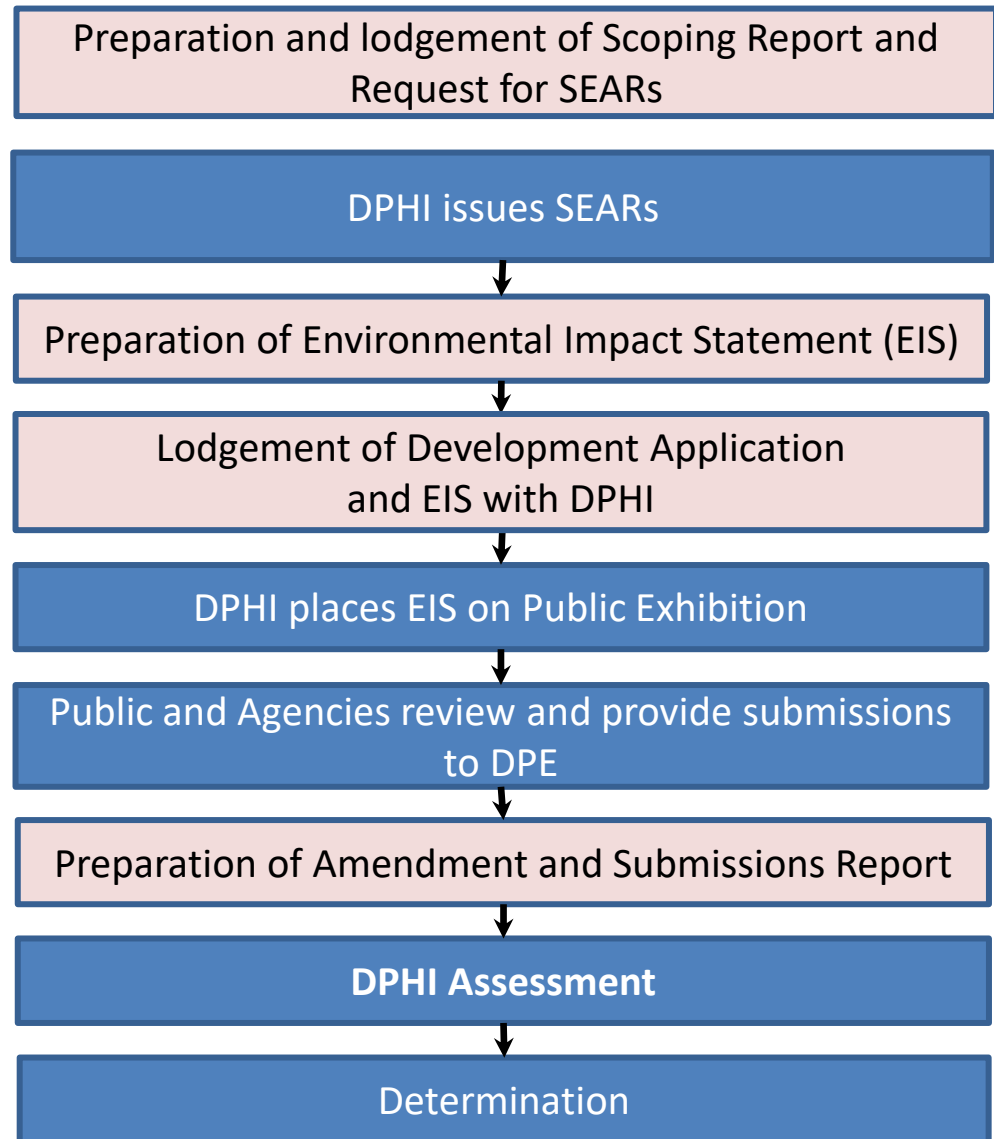
*Acacia ausfeldii* (Ausfeld's Wattle)

# OC3 Extension – Amended Project

## Progress of OC3 Extension Project Assessment

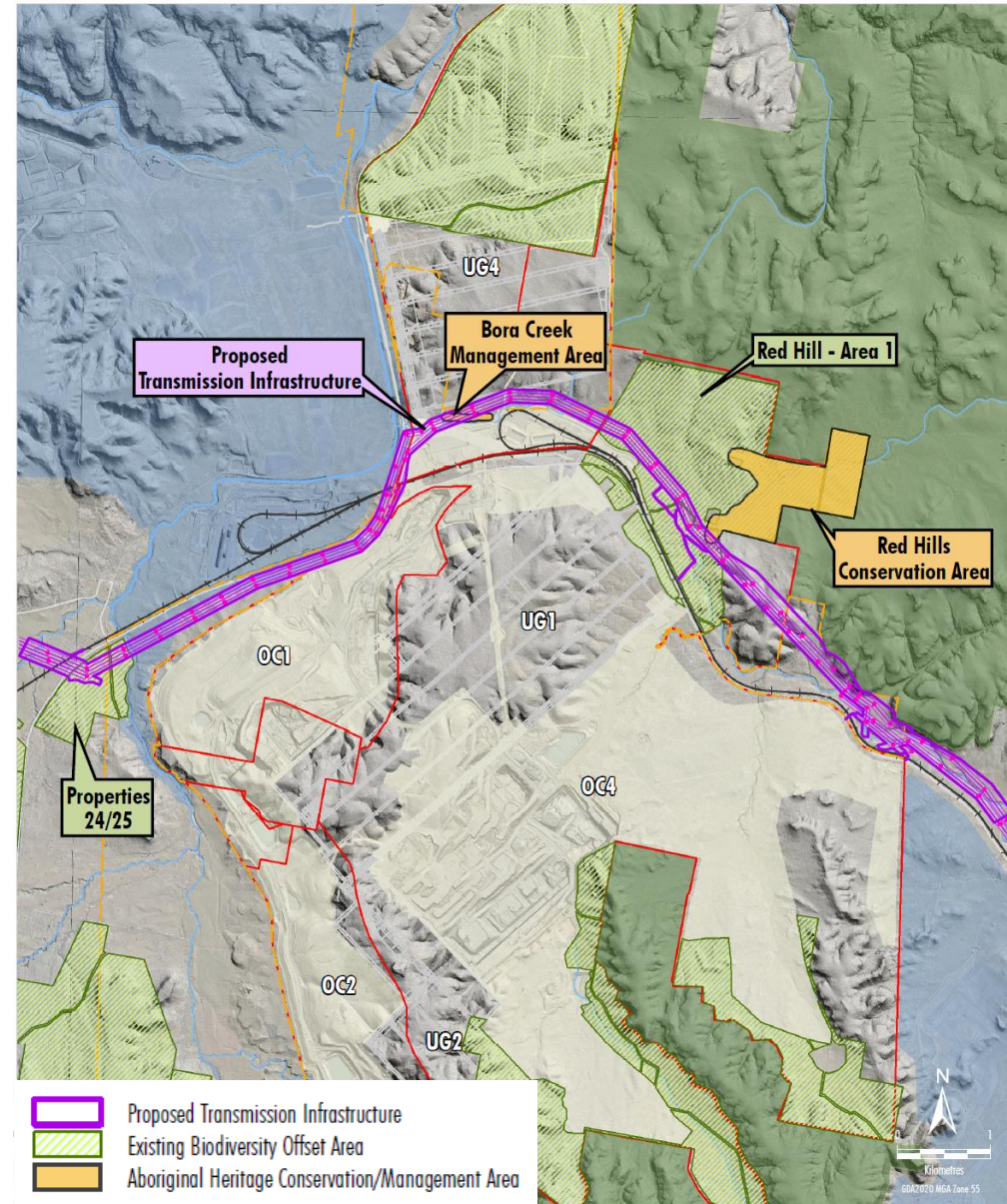
- DPHI undertaking assessment of Amended Project with input from Agencies and Independent Expert Advisory Panel for Mining.
- MCO is currently preparing a consolidated response to all advice received from Agencies and the Independent Expert Advisory Panel for Mining on the Amendment and Submissions Report.

**Current Status** →



# NSW EnergyCo Transmission Infrastructure

- A Modification Report is being prepared for the Stage 1 and Stage 2 Project Approvals to facilitate interactions with EnergyCo's Transmission Project.
- A variation to EPBC 2007/3297 is also in progress to accommodate the proposed infrastructure.



# Employment Update

## Current Traineeships

- 13 Trainees currently onsite
  - 8 Underground Trainees
  - 7 Open Cut Trainees

## Apprentices

- 31 Apprentices currently onsite
  - 11 Underground Apprentices
  - 12 Open Cut Apprentices
  - 8 Coal Handling and Preparation Plant (CHPP) Apprentices



