

# Notice of Modification

## Section 75W of the *Environmental Planning and Assessment Act 1979*

As delegate for the Minister for Planning, I modify the Project Approval referred to in Schedule 1, subject to the conditions in Schedule 2.



**David Kitto**  
**Executive Director**  
**Resource Assessments & Business Systems**

Sydney 21 AUGUST 2015

---

### SCHEDULE 1

Project Approval 05\_0117 for the Moolarben Coal Project Stage 1, granted by the Minister for Planning on 6 September 2007.

---

### SCHEDULE 2

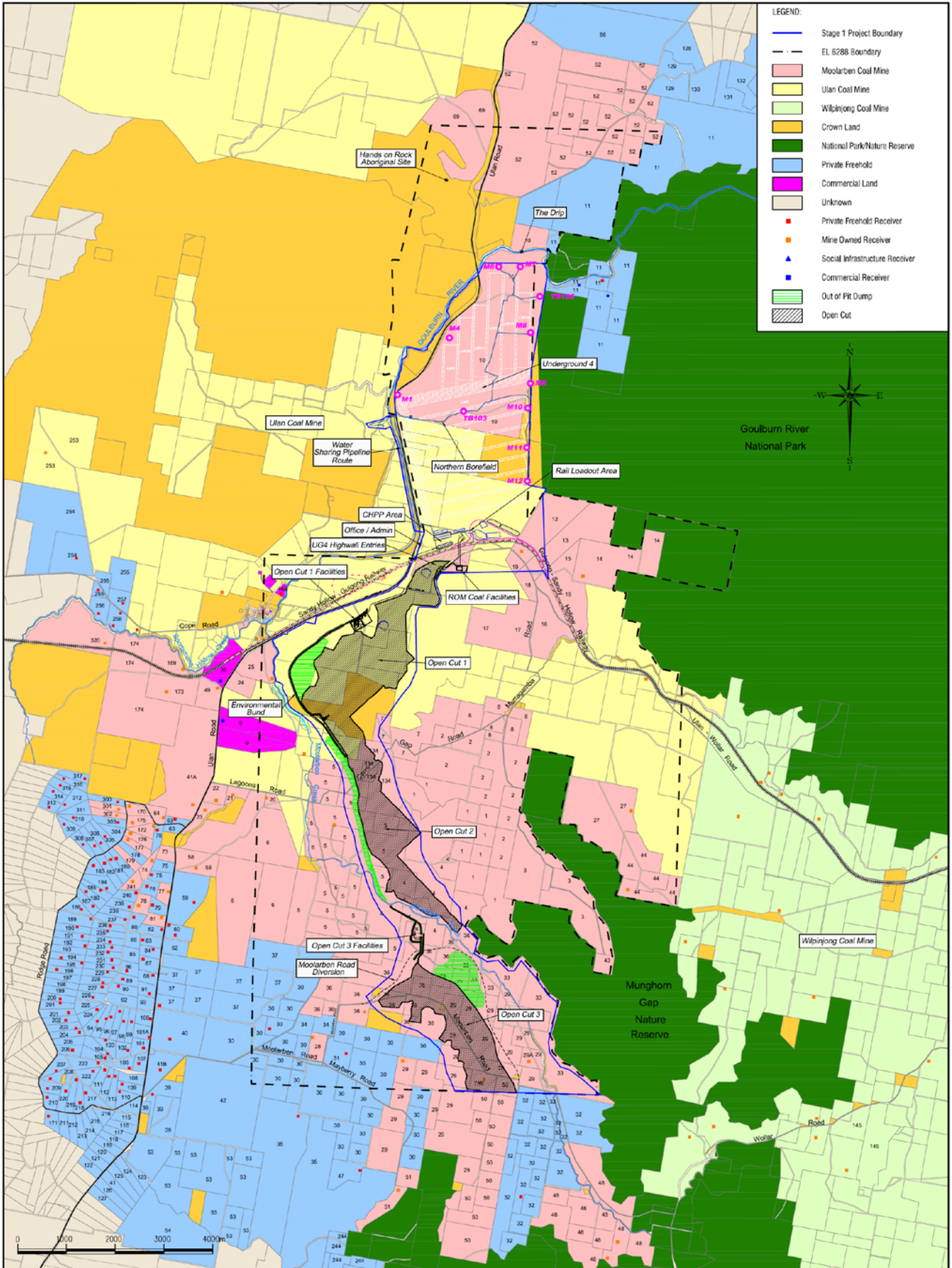
1. In the list of DEFINITIONS, insert:

|             |   |
|-------------|---|
| EA (MOD 11) | Modification Application 05_0117 MOD 11 and accompanying OC4 South West Modification Environmental Assessment from Moolarben Coal Operations Pty Limited dated April 2015 and the response to submission dated June 2015. |
|-------------|---|
  
2. In the list of DEFINITIONS, replace Moolarben Stage 1 mine with :

|                        |   |
|------------------------|---|
| Moolarben Stage 1 mine | The approved mining operations and associated development enclosed within the blue dashed line on the figure in Appendix 2. |
|------------------------|---|
  
3. In the list of DEFINITIONS, replace Moolarben Stage 2 mine with :

|                        |   |
|------------------------|---|
| Moolarben Stage 2 mine | The approved mining operations and associated development enclosed within the yellow dashed line on the figure in Appendix 2. |
|------------------------|---|
  
4. In condition 2 of Schedule 2, delete all words after "EA (MOD 10);" (except the Notes), and insert:

|     |                                   |
|-----|-----------------------------------|
| (l) | EA (MOD 11);                      |
| (m) | statement of commitments; and     |
| (n) | the conditions of this approval." |
  
5. In condition 32 of Schedule 3, delete the row in Table 11 setting performance measures for the Ulan Seam sub-crop line of the most northerly final void.
  
6. In Appendix 2 replace all figures with the following:



**LEGEND:**

- Stage 1 Project Boundary
- EL 6288 Boundary
- Moolarben Coal Mine
- Ulan Coal Mine
- Wilpinjong Coal Mine
- Crown Land
- National Park/Nature Reserve
- Private Freehold
- Commercial Land
- Unknown
- Private Freehold Receiver
- Mine Owned Receiver
- ▲ Social Infrastructure Receiver
- Commercial Receiver
- Out of Pit Dump
- Open Cut

| Rev | Drawn | Description | Approved |
|-----|-------|-------------|----------|
|     |       |             |          |

  
 Prepared by Pegasus Survey & Drafting Ph: 02 65 718888

| Moolarben Coal Operations<br>General Overview of Stage 1 Project |         |       |         |          |  |
|--|---------|-------|---------|----------|--|
| Date   | Scale   | Drawn | Checked | Approved |  |
| 02.12.13   | 1:70000 | CD    | MM      | MM       |  |

|              |       |
|--------------|-------|
| Drawing No.  | 09471 |
| Revision No. | C     |
| Sheet Size   | A3    |



