

Prepared for:  
**THE NEWCASTLE WALLSEND COAL  
COMPANY PTY LIMITED**

**ENVIRONMENTAL IMPACT STATEMENT  
FOR  
PROPOSED EXTENSION OF OPERATIONS  
OF ELLALONG COLLIERY  
INTO BELLBIRD SOUTH**

**VOLUME 3 - FIGURES**

Prepared by

**HLA-ENVIROSCIENCES PTY LIMITED**  
122 Parry Street, Newcastle West NSW 2302  
Phone (049) 262600, Fax (049) 264532

(Offices also in Sydney Tamworth Brisbane Mackay Gladstone and Melbourne)

AUGUST 1995

# VOLUME 3

## LIST OF FIGURES

### SECTION 1

- Figure No. 1.1 Location Plan  
 1.2 Current Mining areas, Infrastructure and Proposed Mining Area  
 1.3 Conceptual Mine Plan

### SECTION 3

- Figure No. 3.1 Greta Seam Structure Contours Bellbird South  
 3.2 Borehole Locations  
 3.3 Seismic Lines  
 3.4 Resource and Reserves Blocks

### SECTION 4

- Figure No. 4.1 Topography  
 4.1a Topography : Reject Emplacement Areas  
 4.2 Wind Roses  
 4.3 Soil Types  
 4.3a Soil Types : Reject Emplacement Areas  
 4.4 Land Capability  
 4.4a Land Capability : Reject Emplacement Areas  
 4.5 Vegetation Types  
 4.6 Regional Drainage Pattern  
 4.7 Drainage Catchments Bellbird South  
 4.8 Environmental Monitoring Sites - Regional  
 4.9 Environmental Monitoring Sites - Pelton  
 4.10 Local Transport Systems  
 4.10a Local Transport Systems : Reject Emplacement Areas  
 4.11 Regional Transport Routes

### SECTION 5

- Figure No. 5.1 Raw Coal Handling Plant Layout  
 5.2 Washed Coal Handling Plant Layout  
 5.3 Water Management System Plan  
 5.4 Water Management System Flow Chart  
 5.5 Reject Emplacement and Disposal Sites  
 5.6 Conceptual Rehabilitation Plan, Aberdare Extended  
 5.7 Underground Tailings Disposal

### SECTION 6

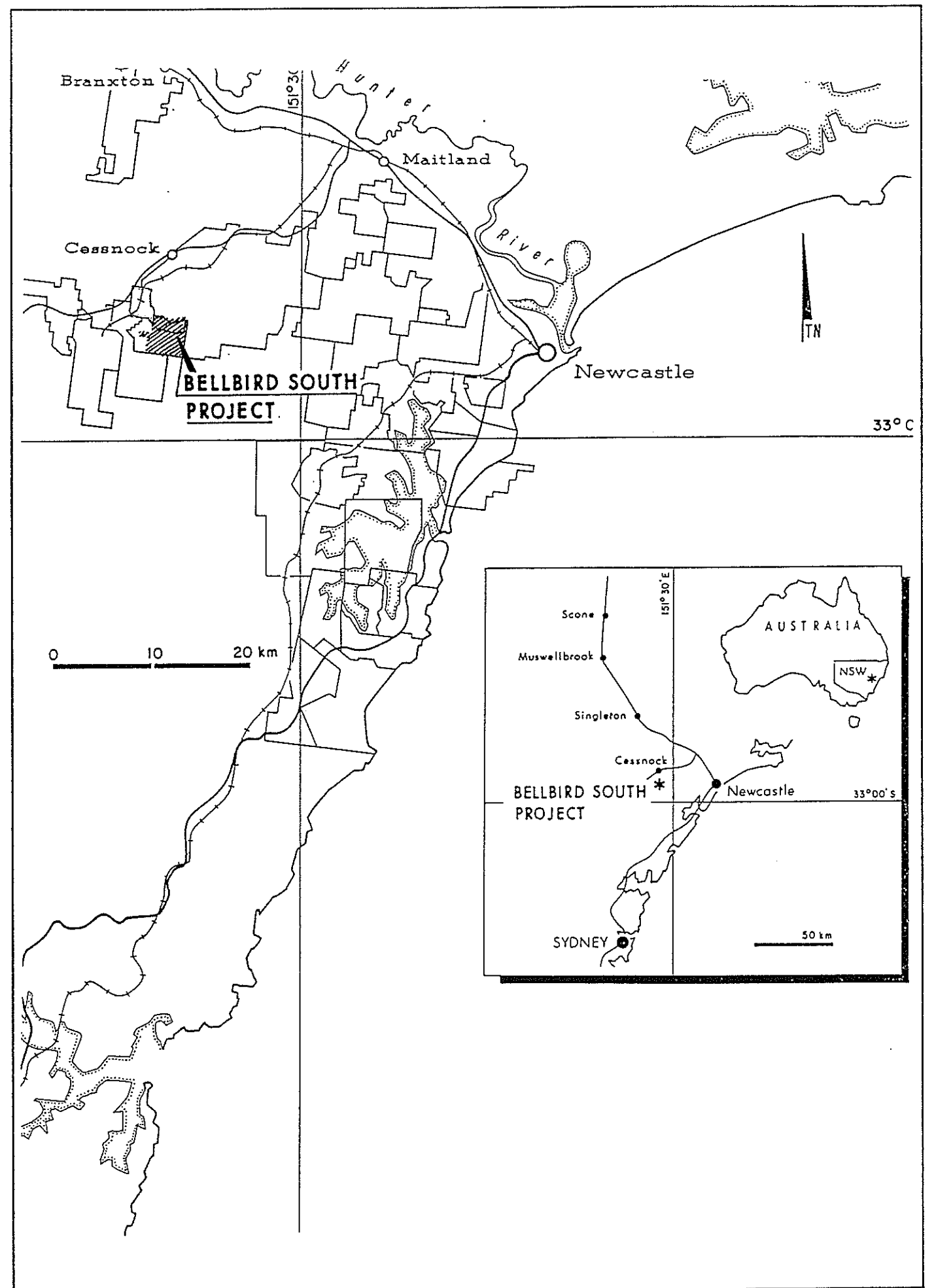
- Figure No. 6.1 Land Use  
 6.2 Land Ownership  
 6.3 Archaeological/Heritage Sites

### SECTION 7

- Figure No. 7.1 Proposed Reject Emplacement Areas  
 7.2 Reject Emplacement Construction  
 7.3 Reject Emplacement Rehabilitation  
 7.4 Conceptual Surface Infrastructure  
 7.5 Potential Tailings Disposal

### SECTION 8

- Figure No. 8.1 Reject Emplacement Area No. 1 Section  
 8.2 Predicted Fan Noise Contours - Cessnock No. 1  
 8.3 Predicted Fan Noise Contours - Sandy Creek Road  
 8.4 Current Mining Areas, Infrastructure and Proposed Mining Areas Noise Sources and Receptors  
 8.5 Properties Overlying Longwall Panels  
 8.6 Predicted Surface Subsidence

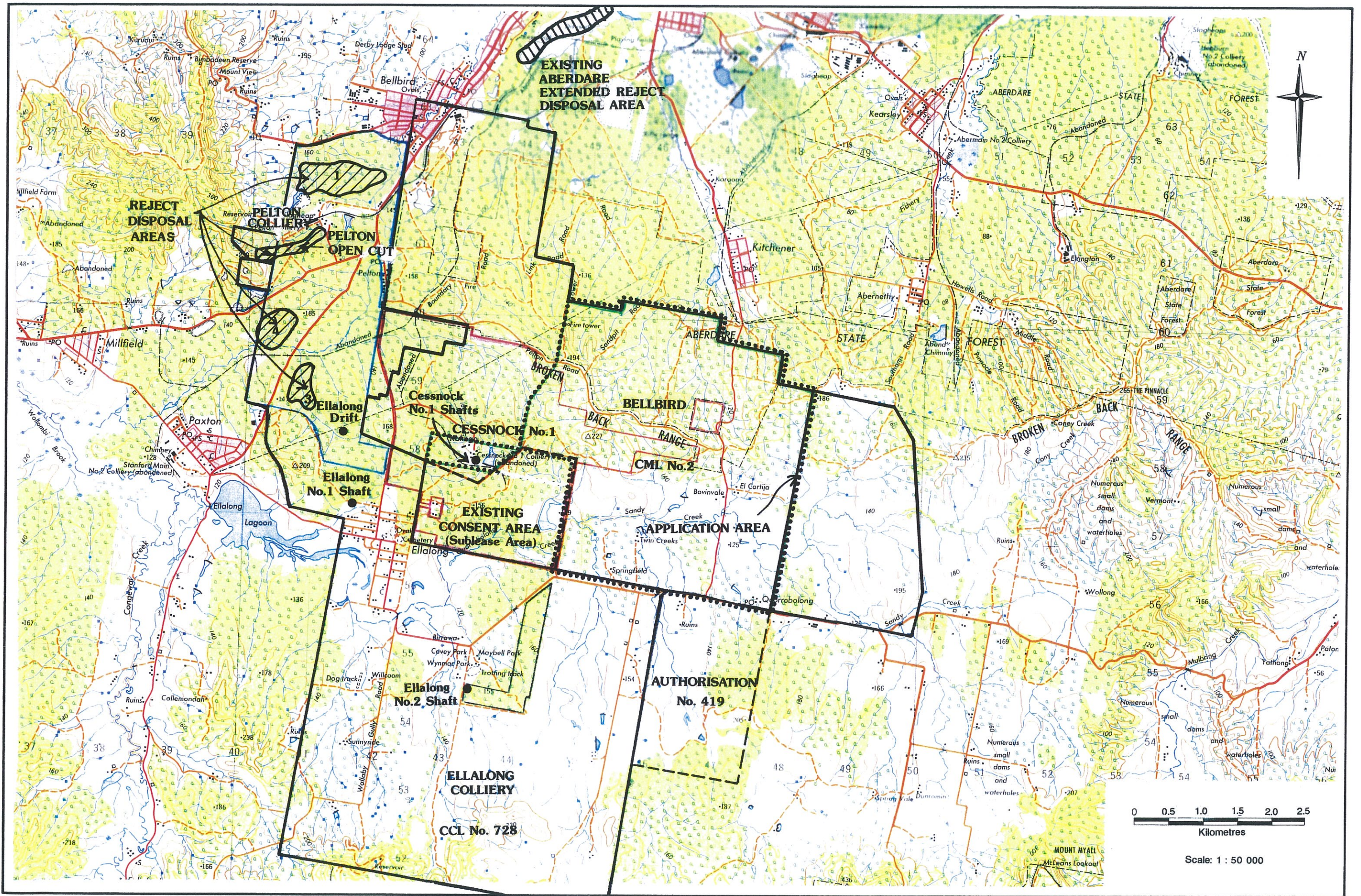


HLA-ENVIROSCIENCES PTY LIMITED

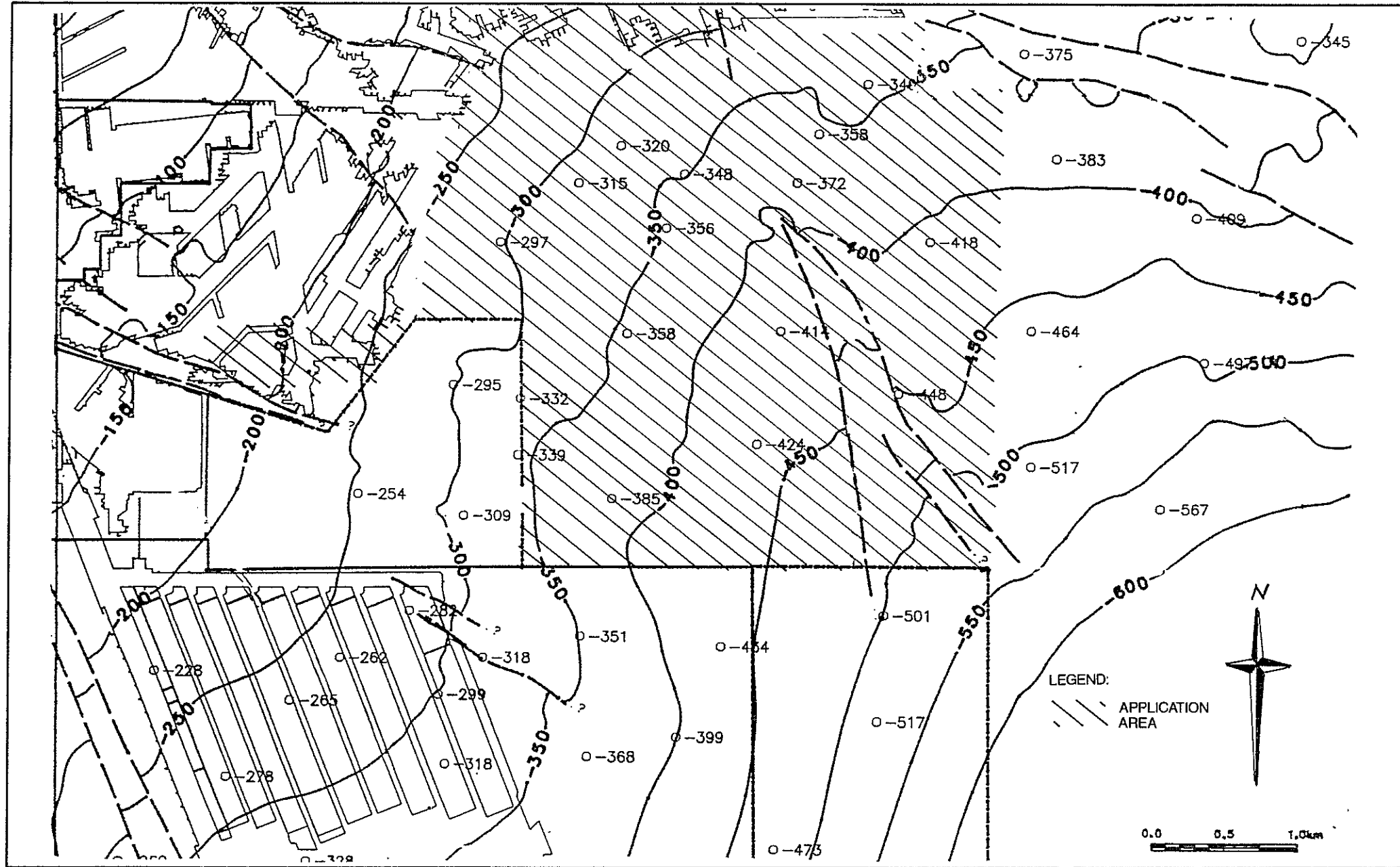
PROJECT No.: F1210


LOCATION  
PLAN

FIG. 1.1

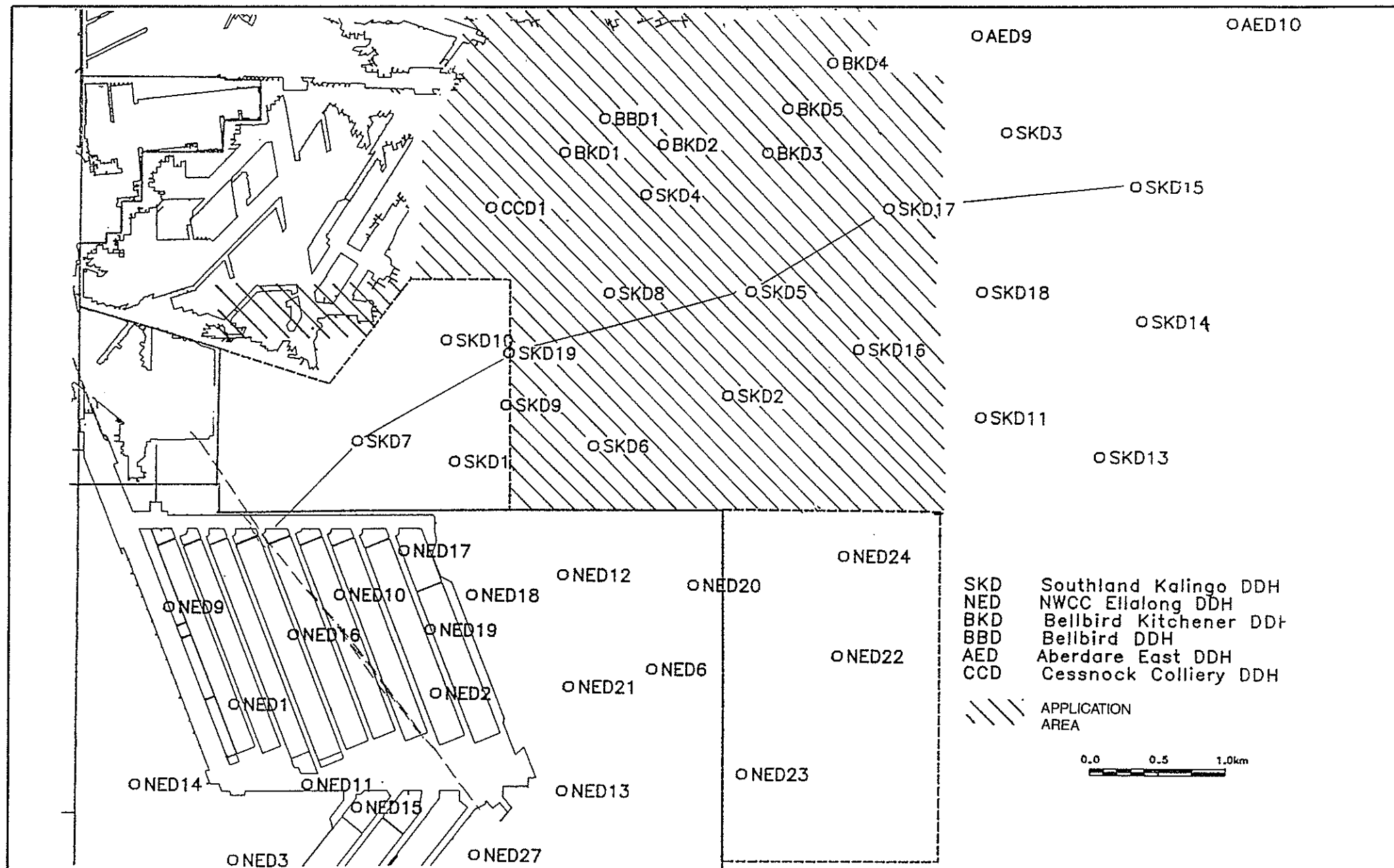


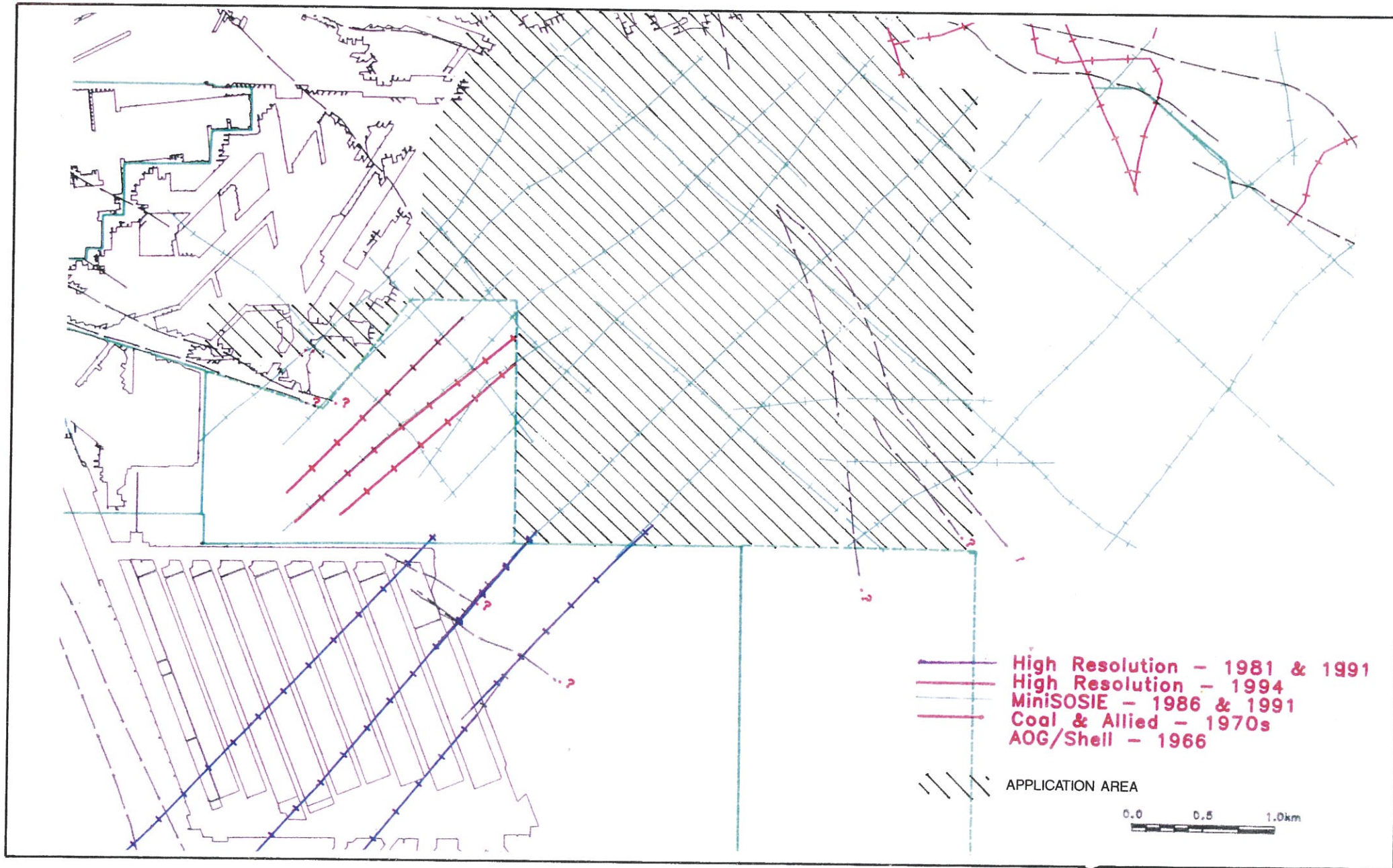





**HLA-ENVIROSCIENCES PTY LIMITED**  
 PROJECT No. F1210

**GRETA SEAM STRUCTURE  
 CONTOURS BELLBIRD SOUTH** *FIG. 3.1*

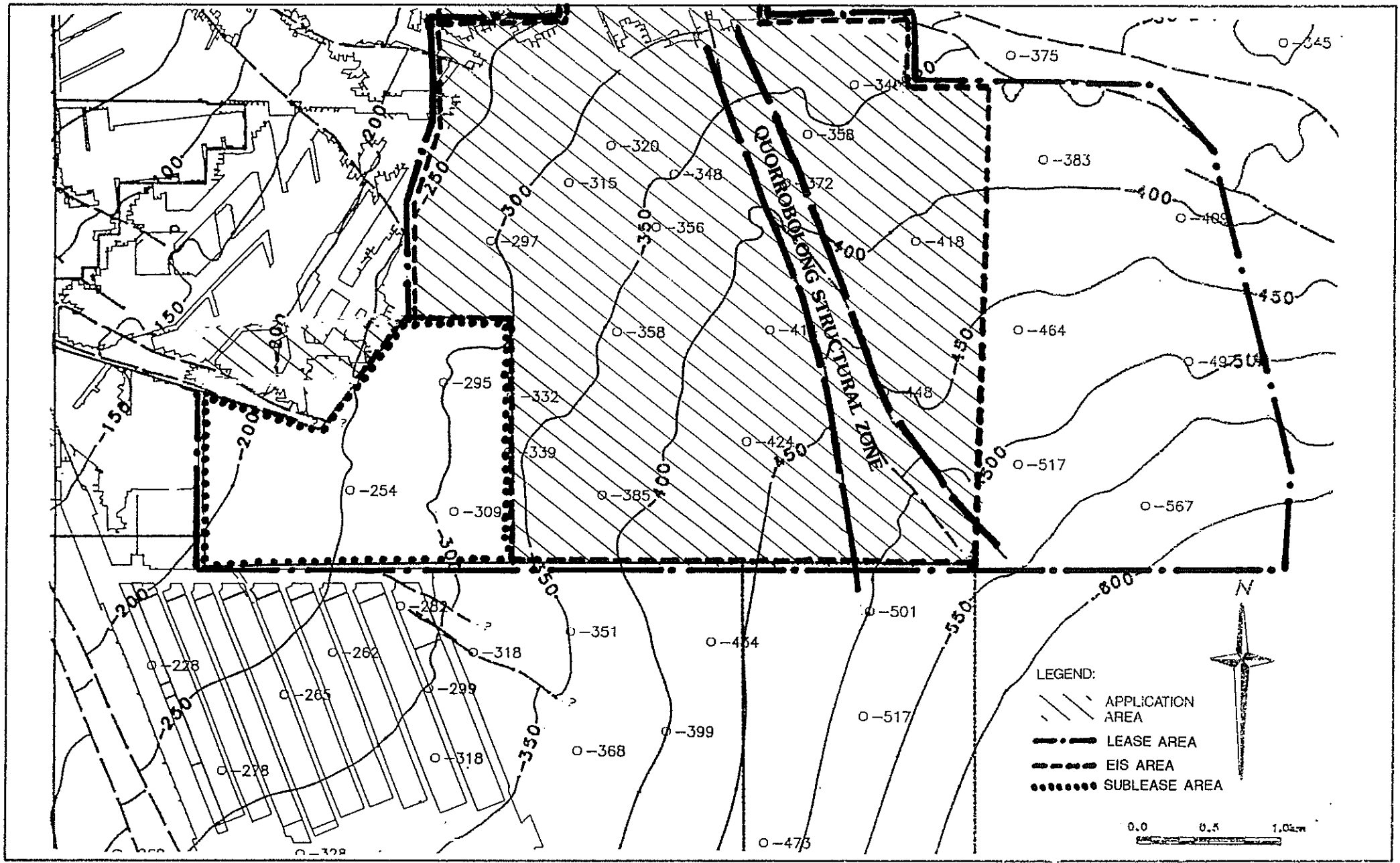





HLA-ENVIROSCIENCES PTY LIMITED  
 PROJECT No. F1210

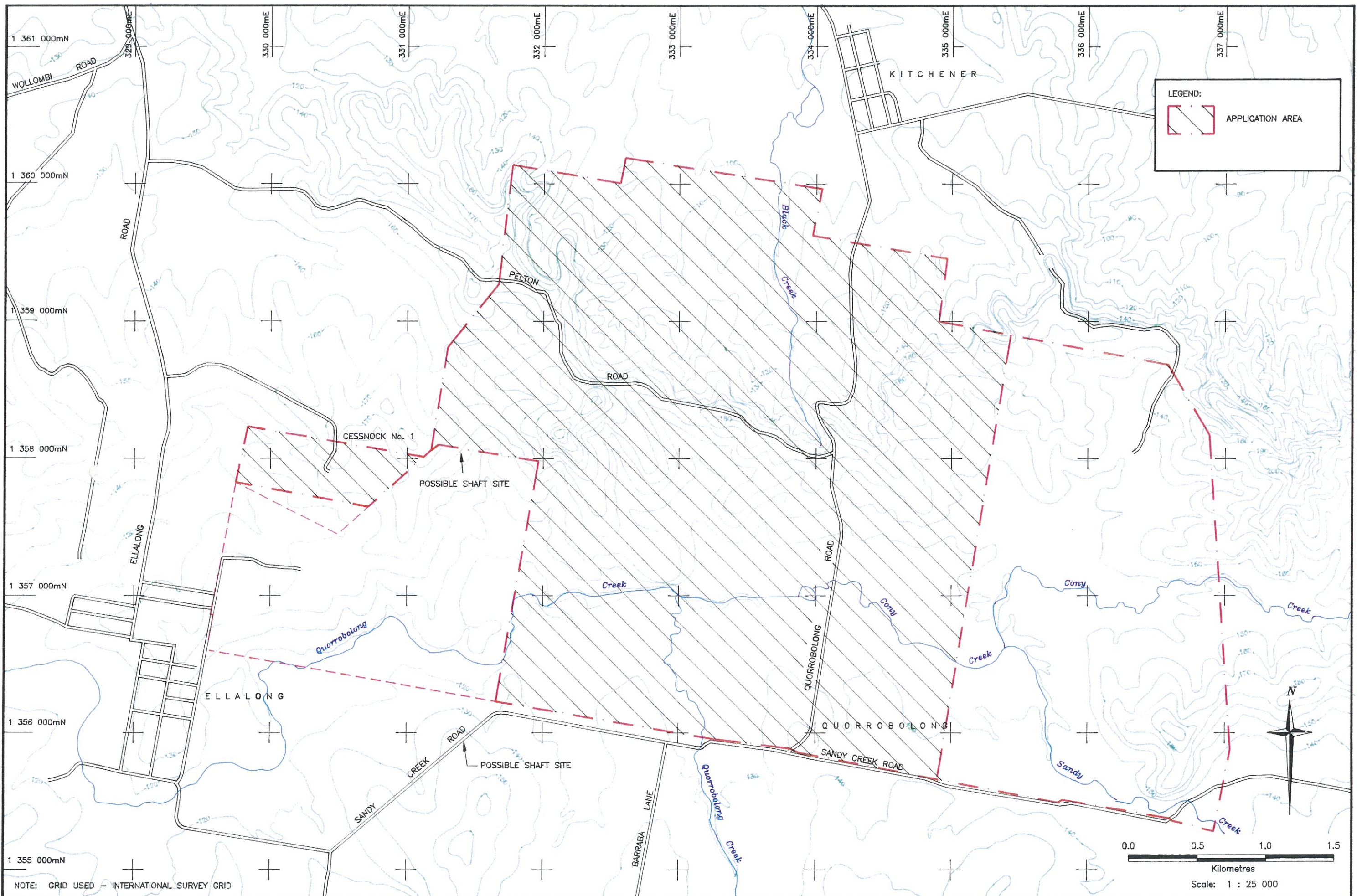
SEISMIC LINES *FIG. 3.3*



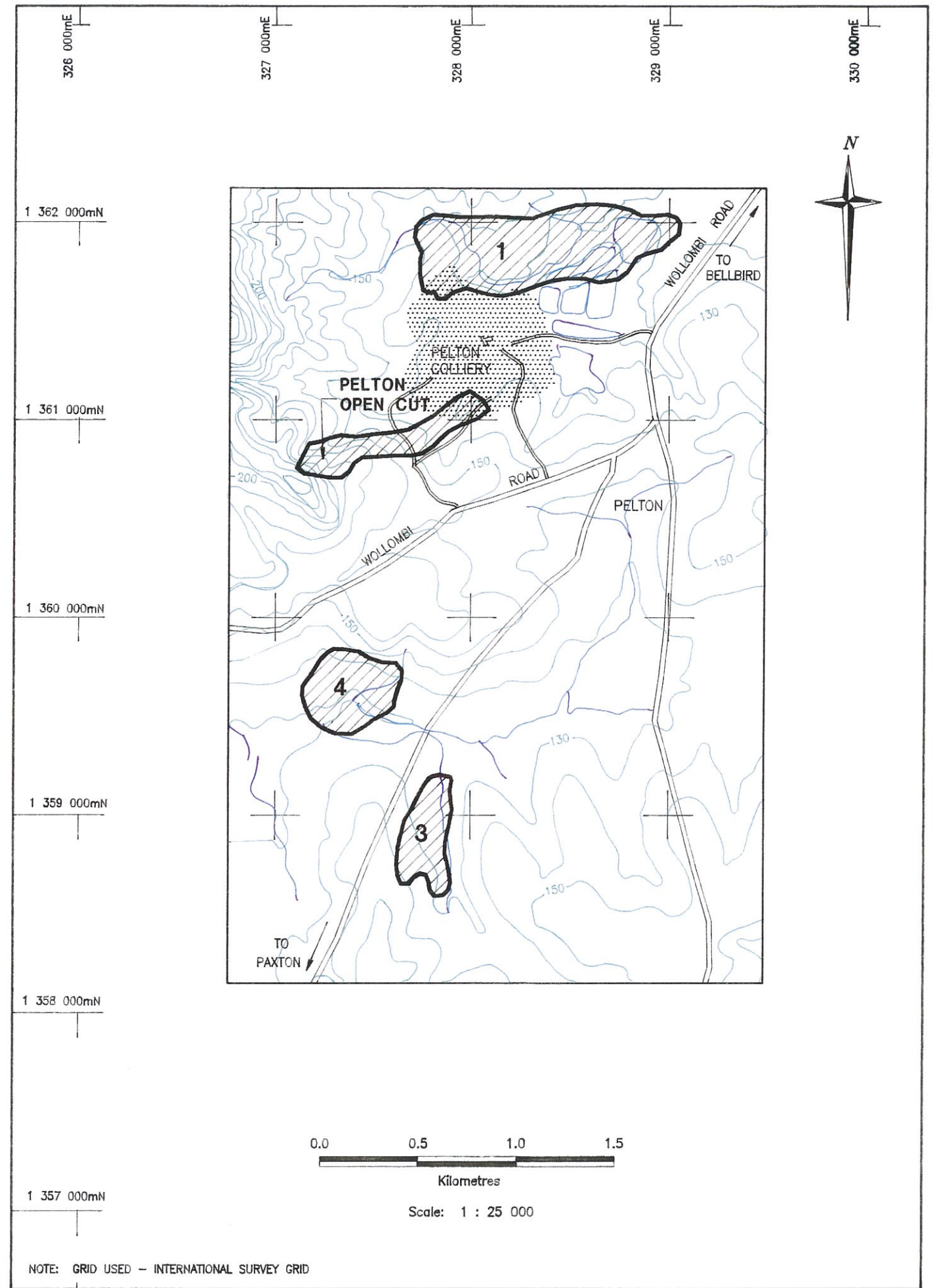



**HLA-ENVIROSCIENCES PTY LIMITED**  
 PROJECT No. 1 F1210

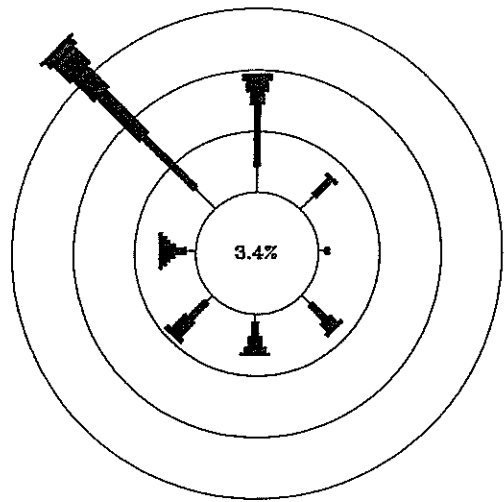
**RESOURCES AND RESERVES BLOCKS** *FIG. 3.4*



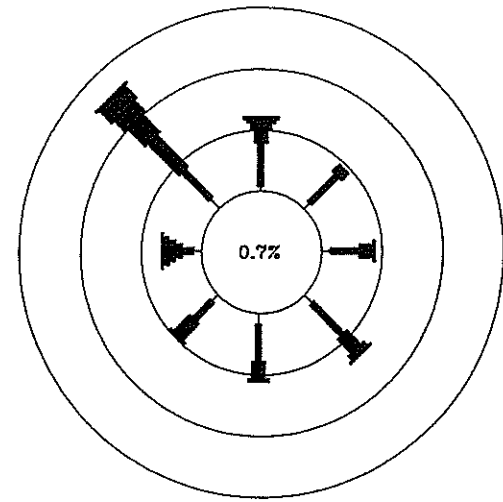
NOTE: GRID USED - INTERNATIONAL SURVEY GRID



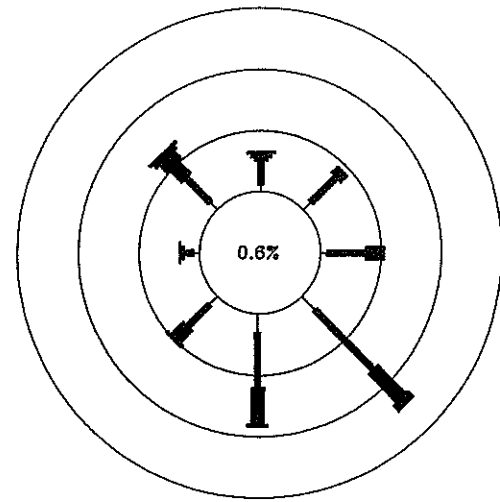
9am



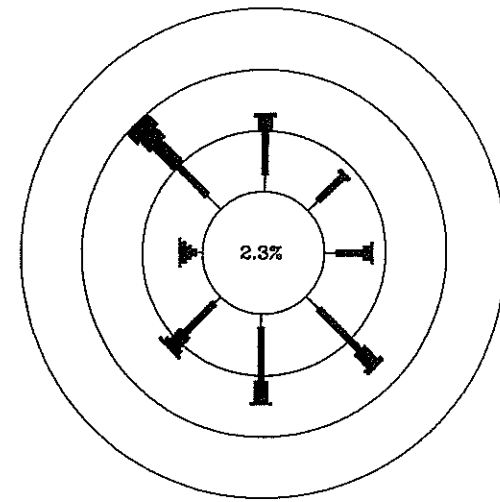
Winter



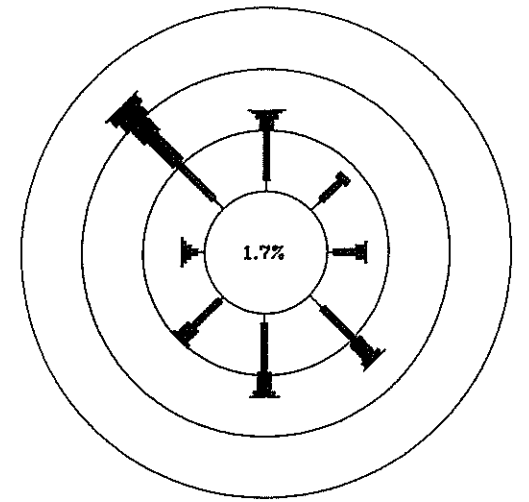
Spring



Summer

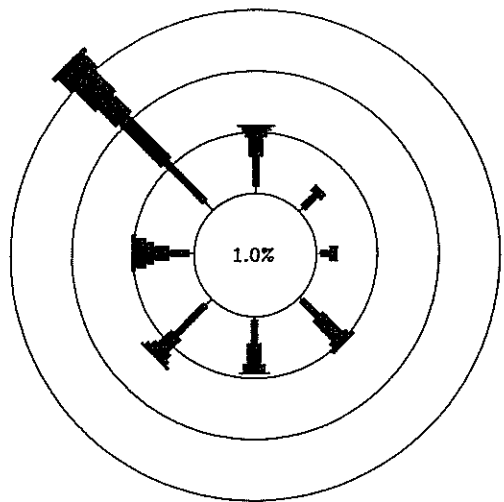


Autumn

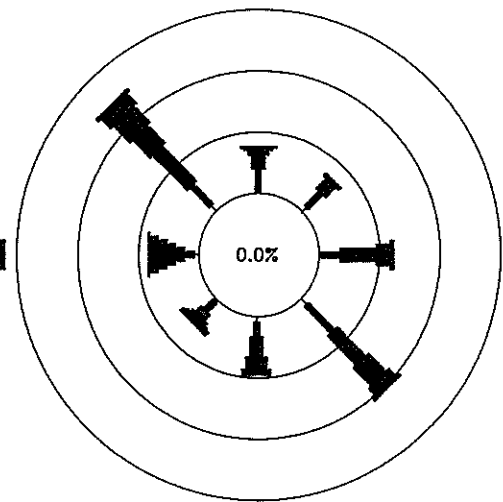


Annual

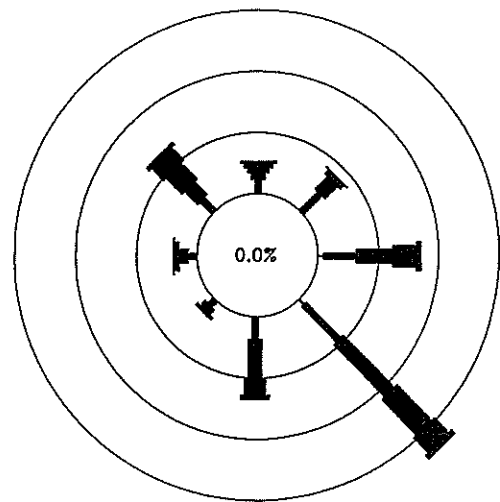
3pm



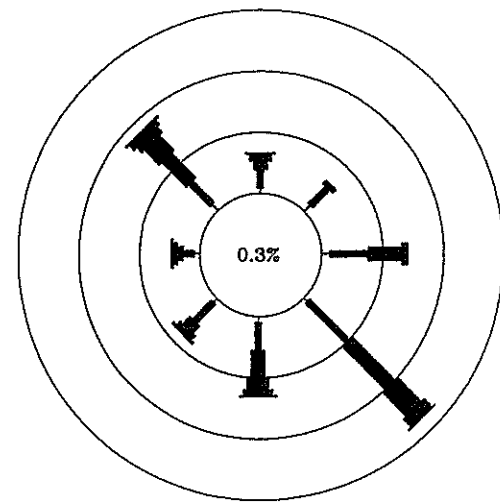
Winter



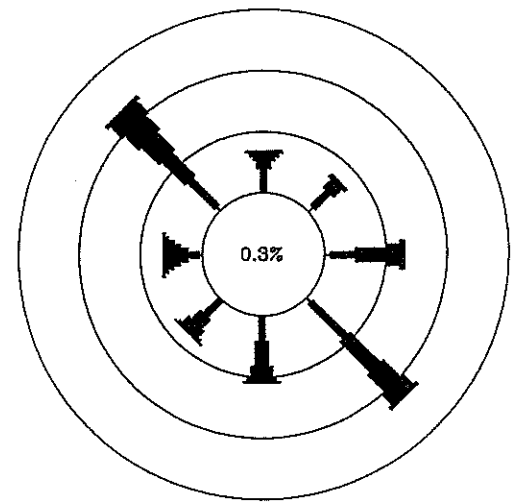
Spring



Summer



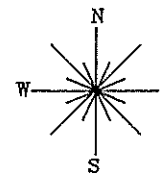
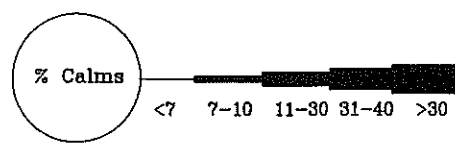
Autumn

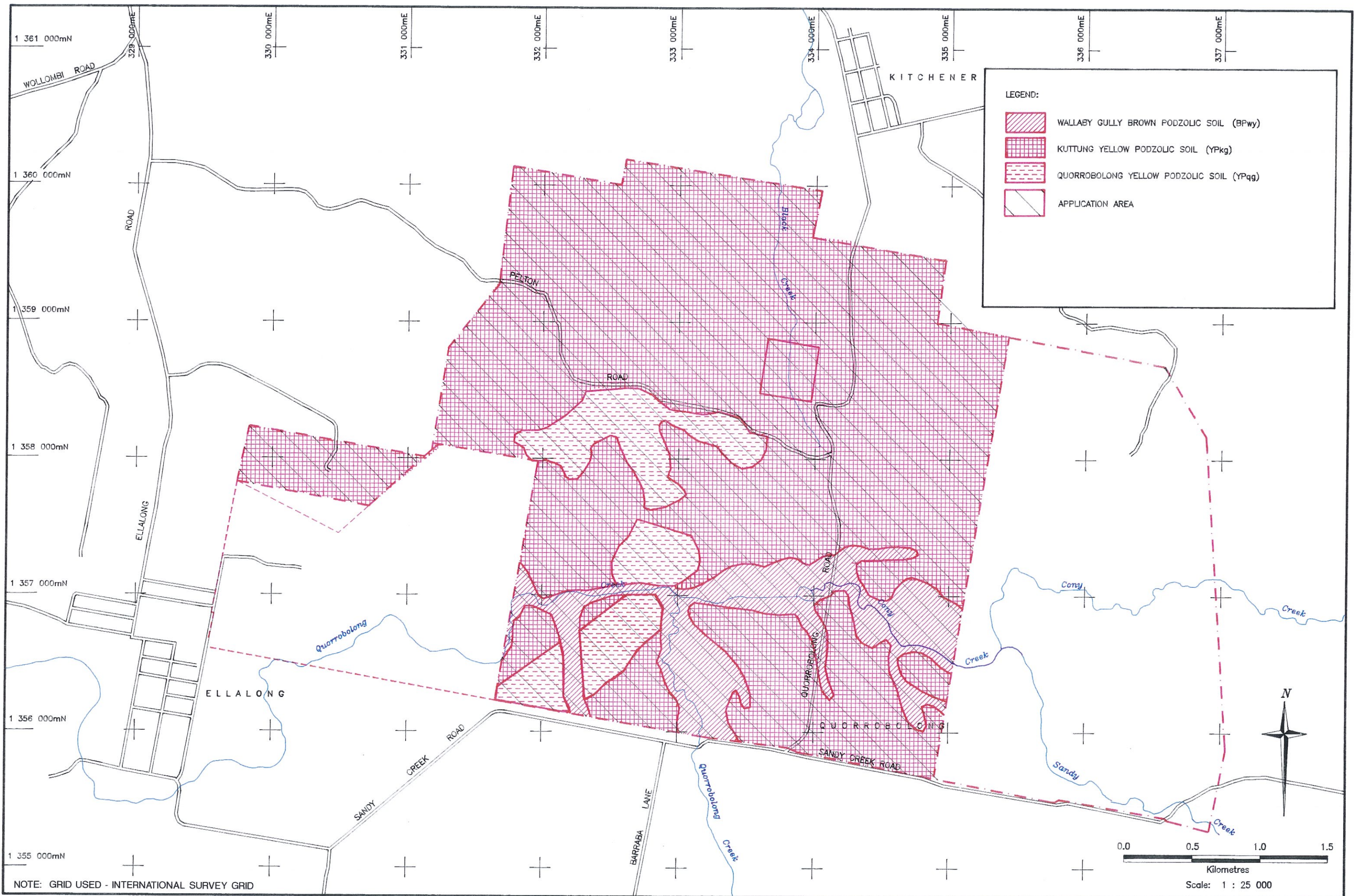


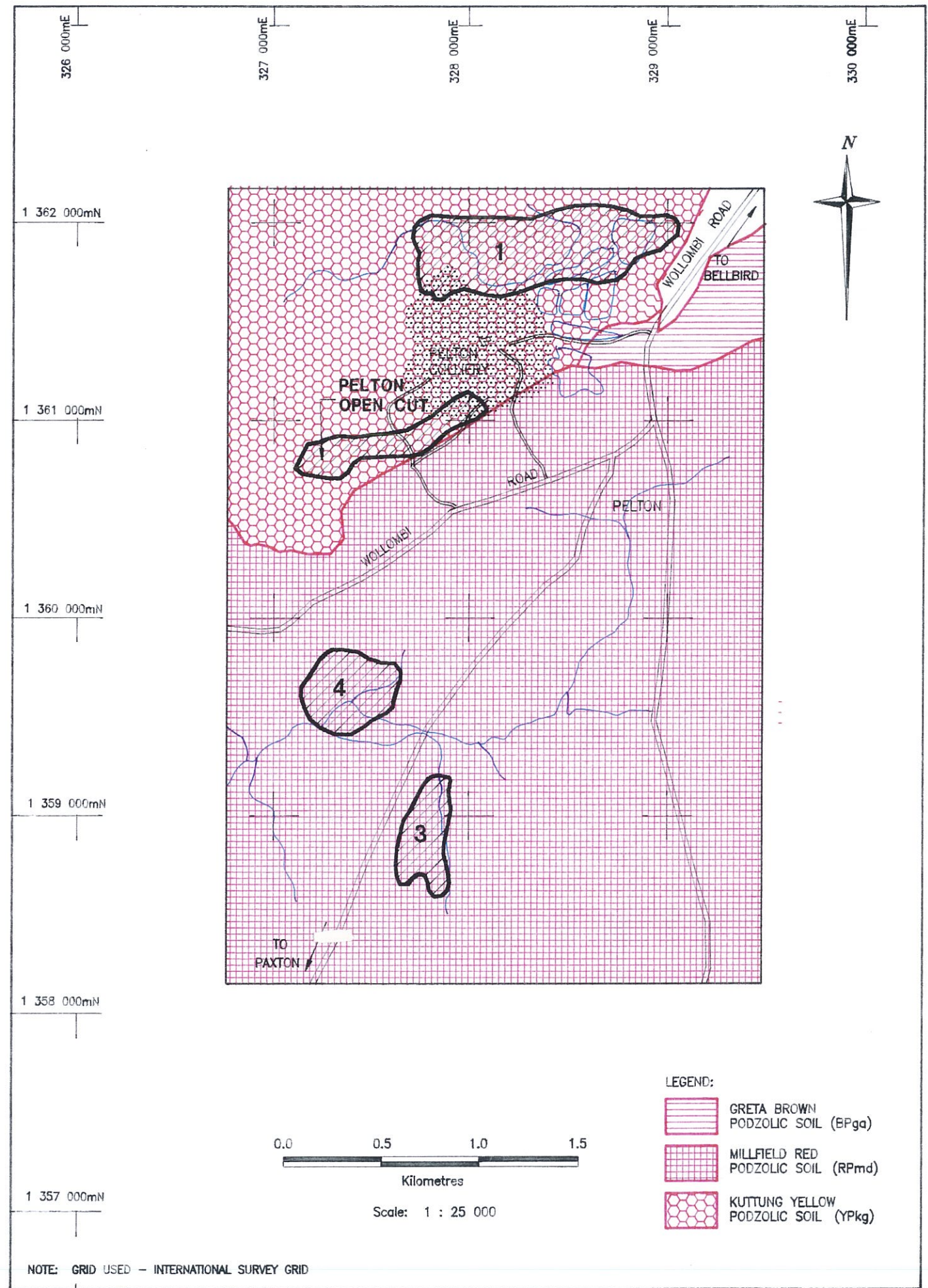
Annual

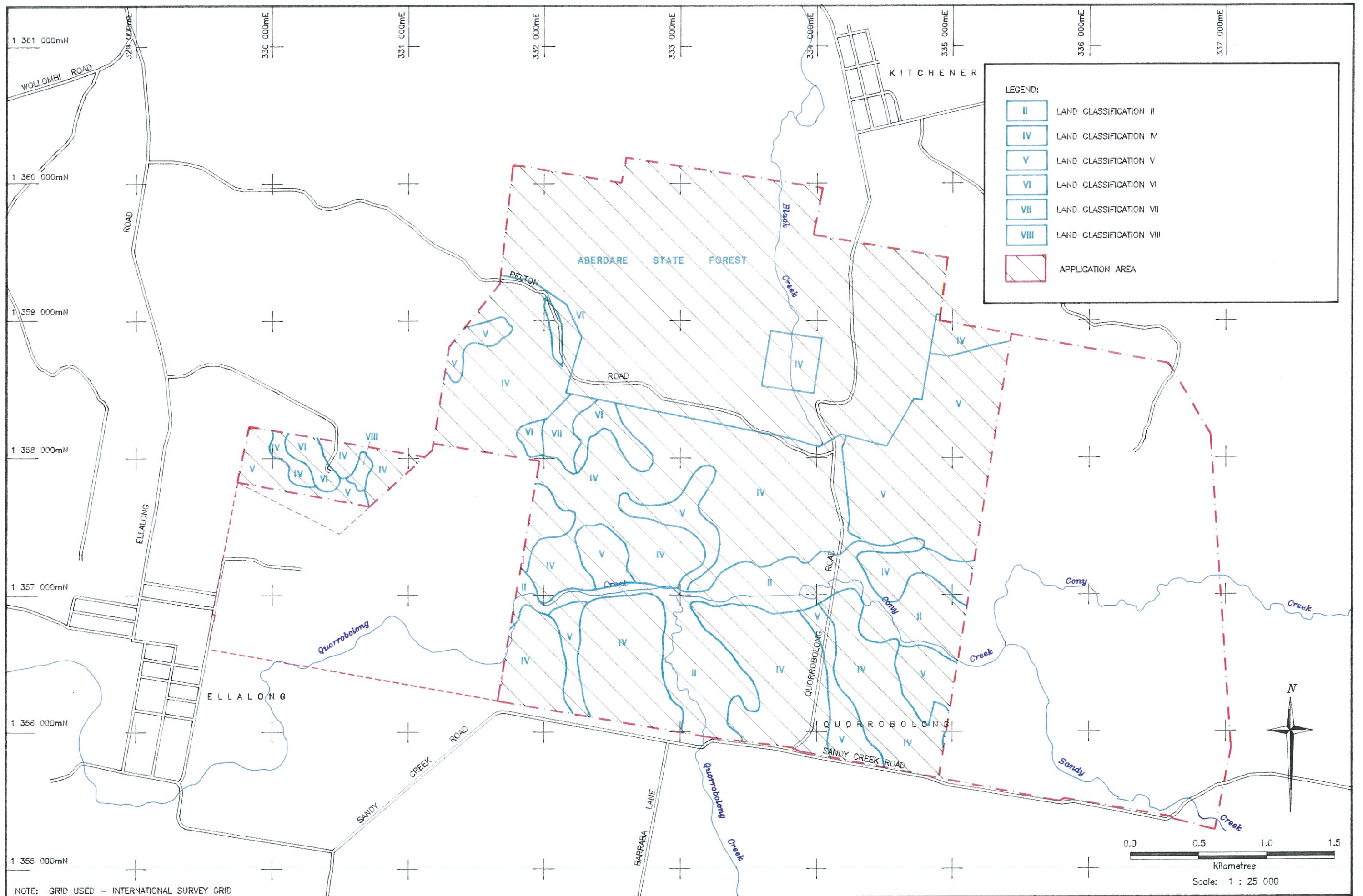
Concentric circles represent 10% frequency intervals

Frequencies for hours 0000 - 2400

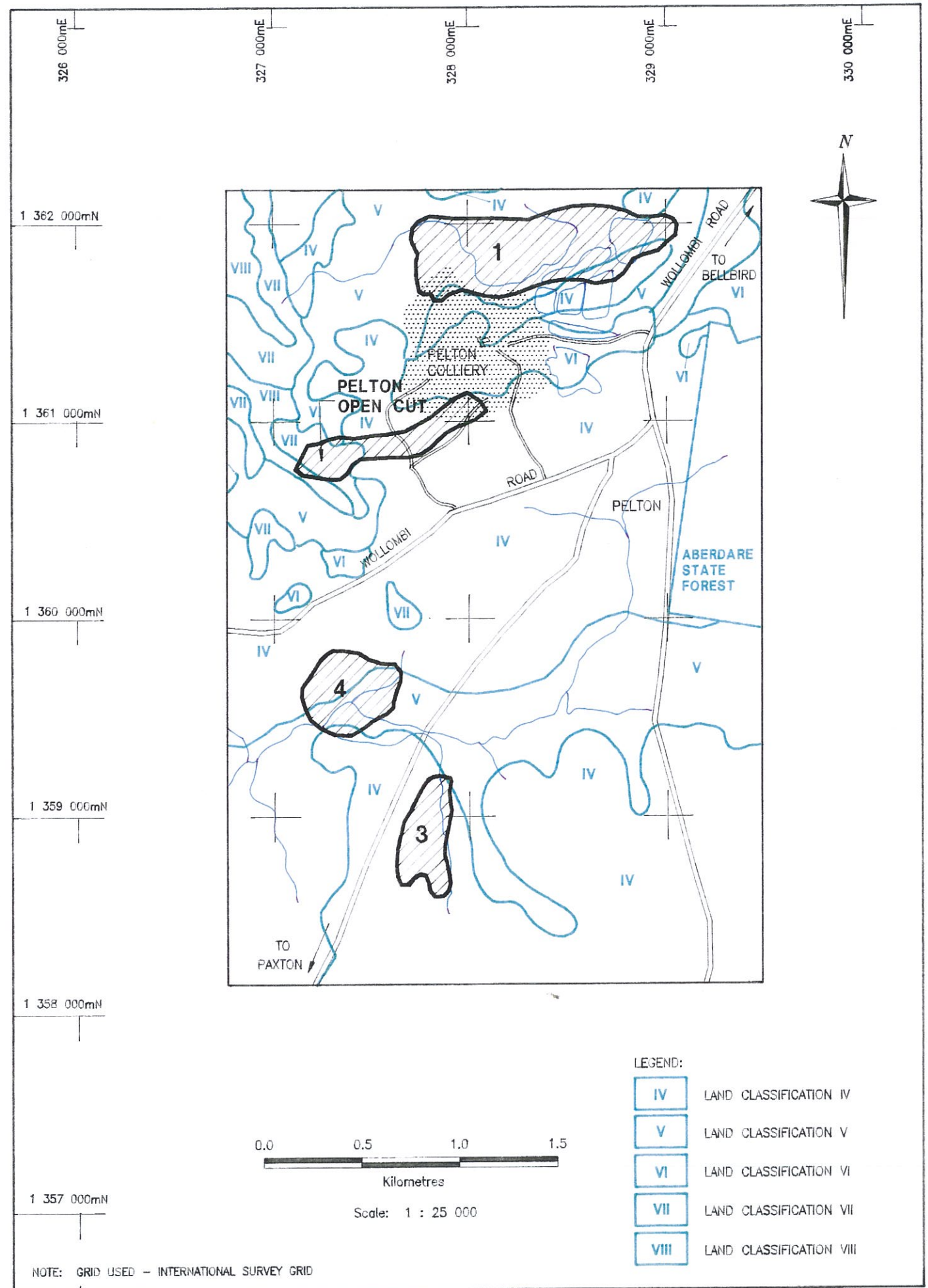








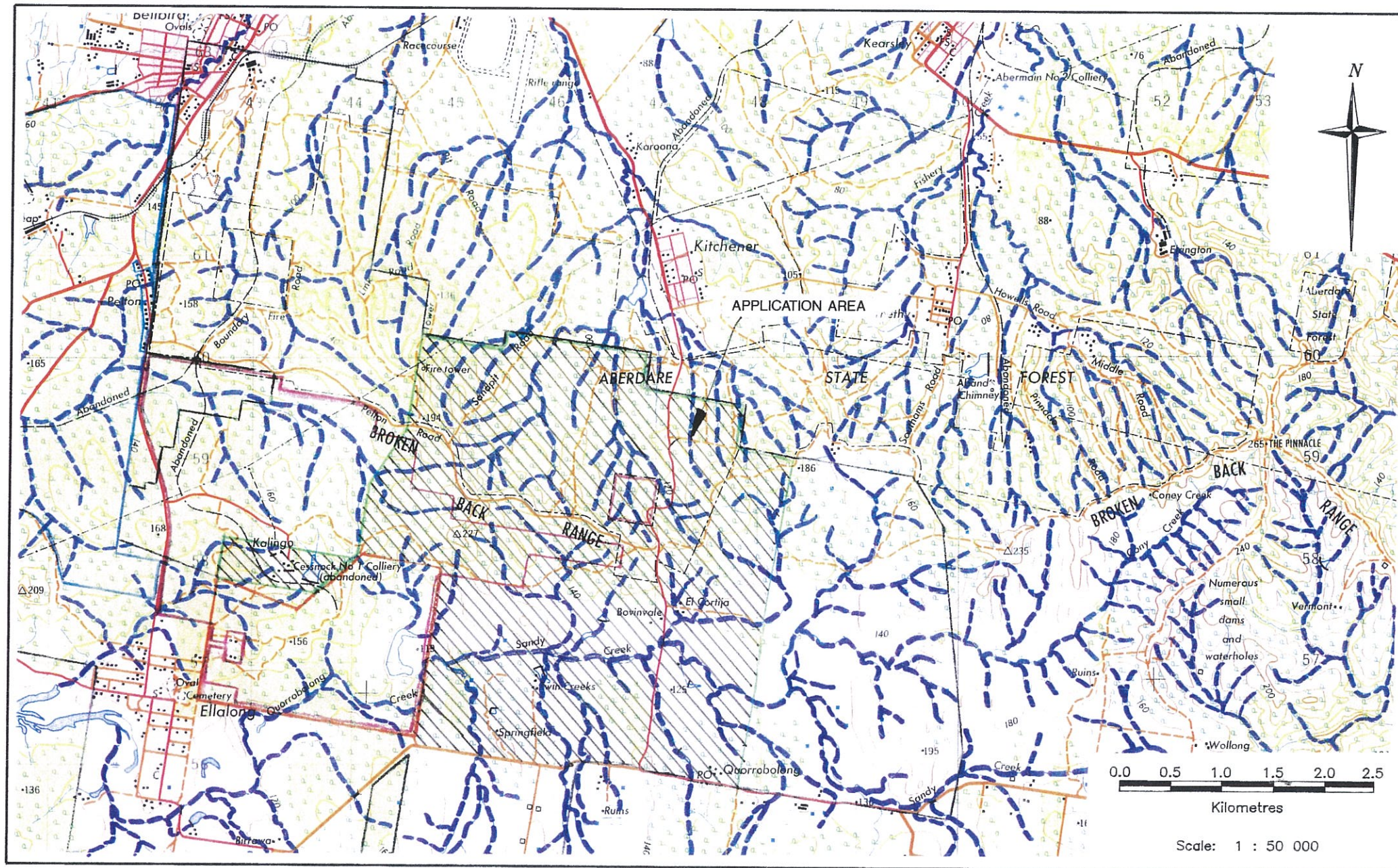
NOTE: GRID USED - INTERNATIONAL SURVEY GRID



NOTE: GRID USED - INTERNATIONAL SURVEY GRID

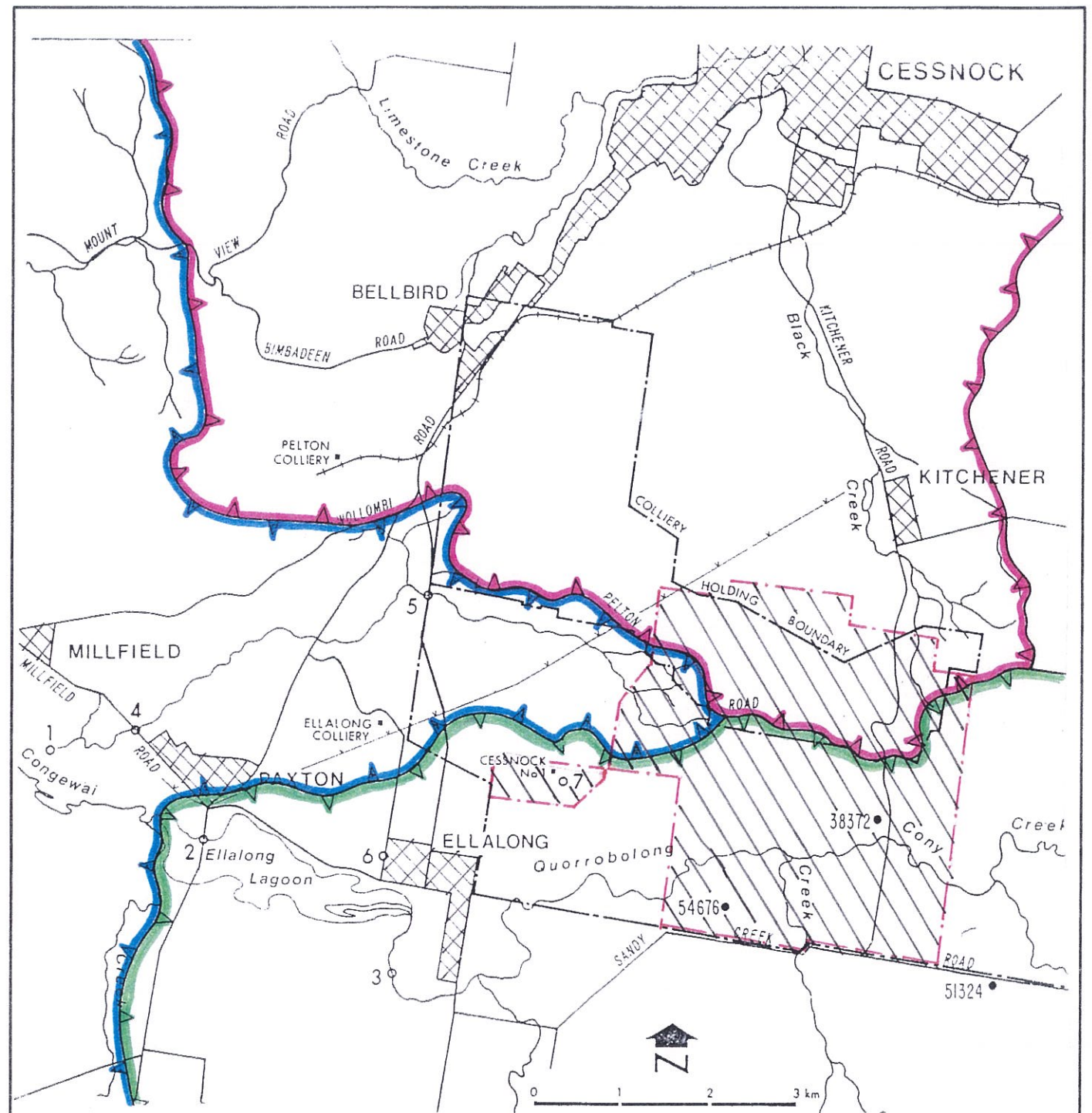






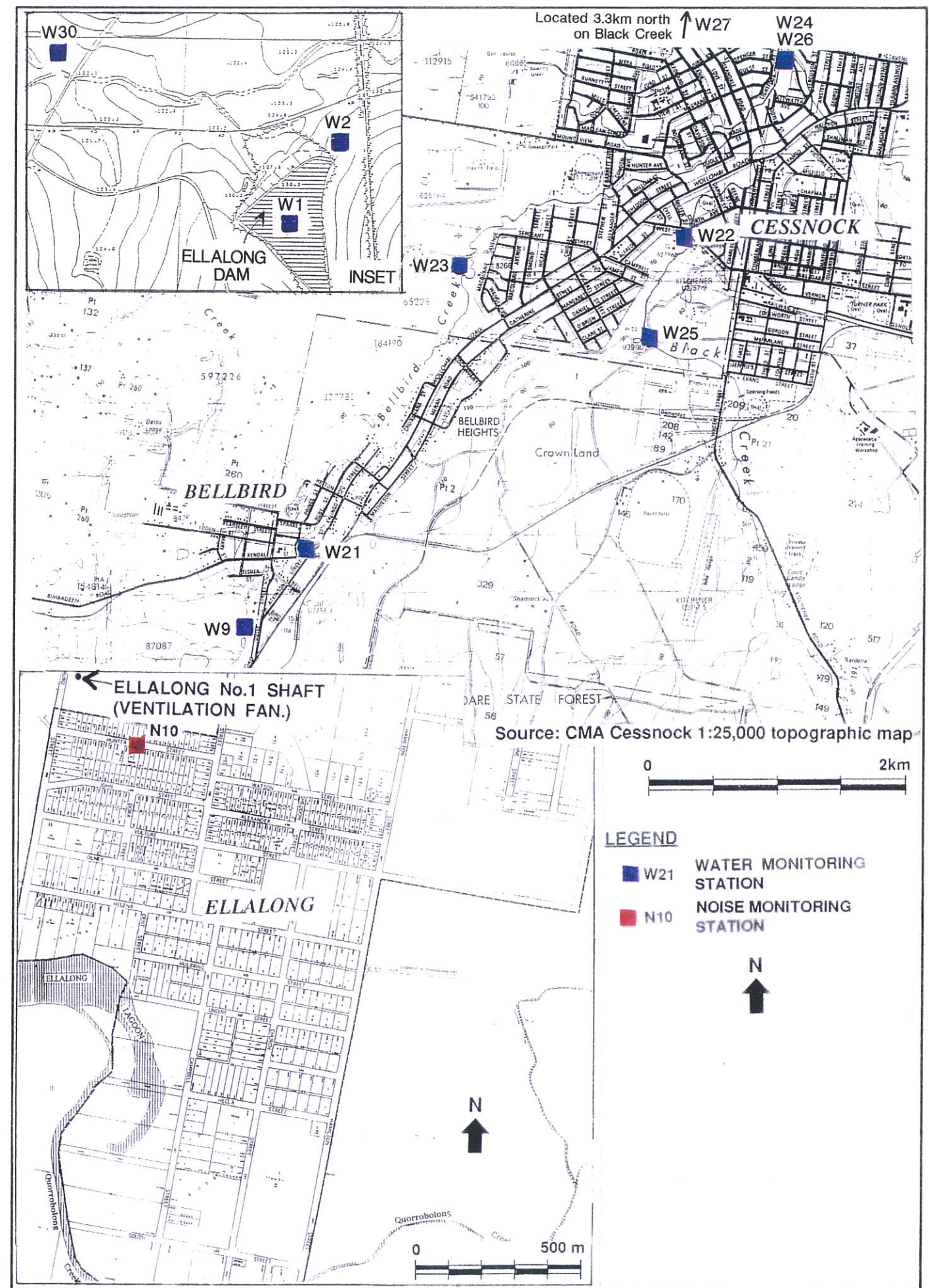
**HLA** HLA-ENVIROSCIENCES PTY LIMITED  
 PROJECT No. F1210

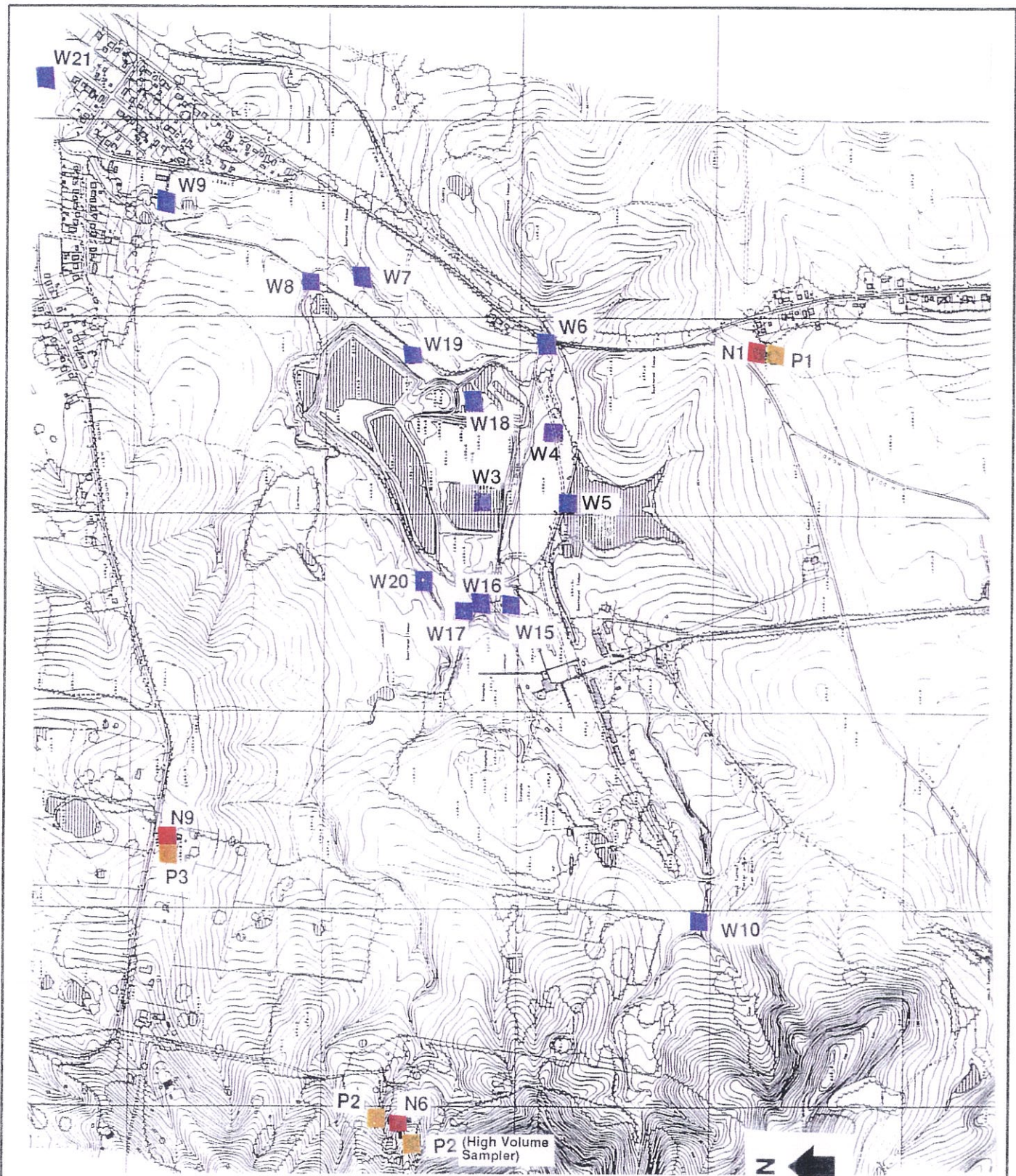
REGIONAL DRAINAGE PATTERN **FIG. 4.6**



**LEGEND**

- 38372 Registered groundwater bores
- 6 Water monitoring station (Epps and Associates, 1988)
- 🟩 Quorrobolong Catchment
- 🟪 Black Creek Catchment
- 🟦 Congewai Creek Catchment
- ▨ APPLICATION AREA

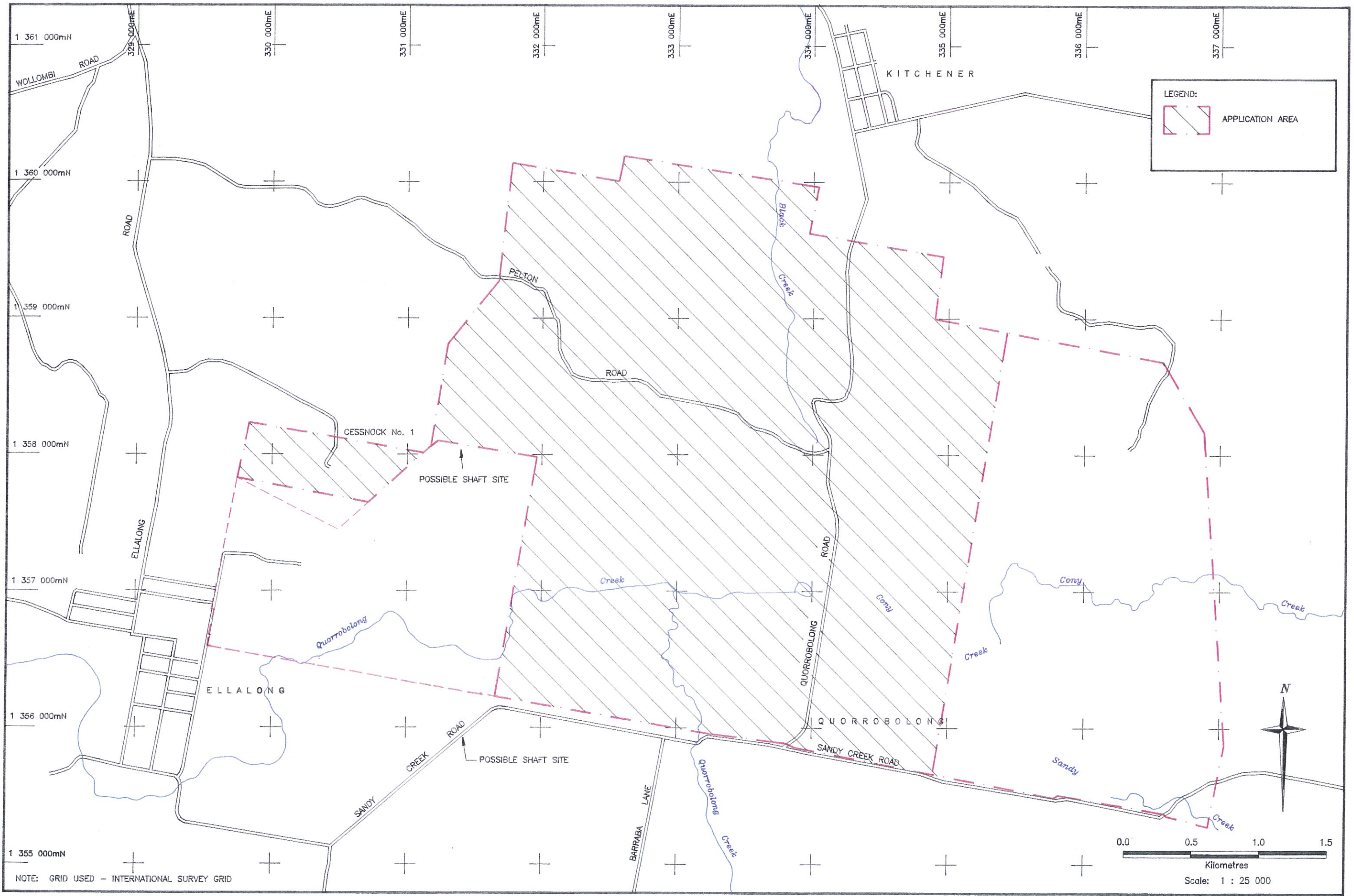


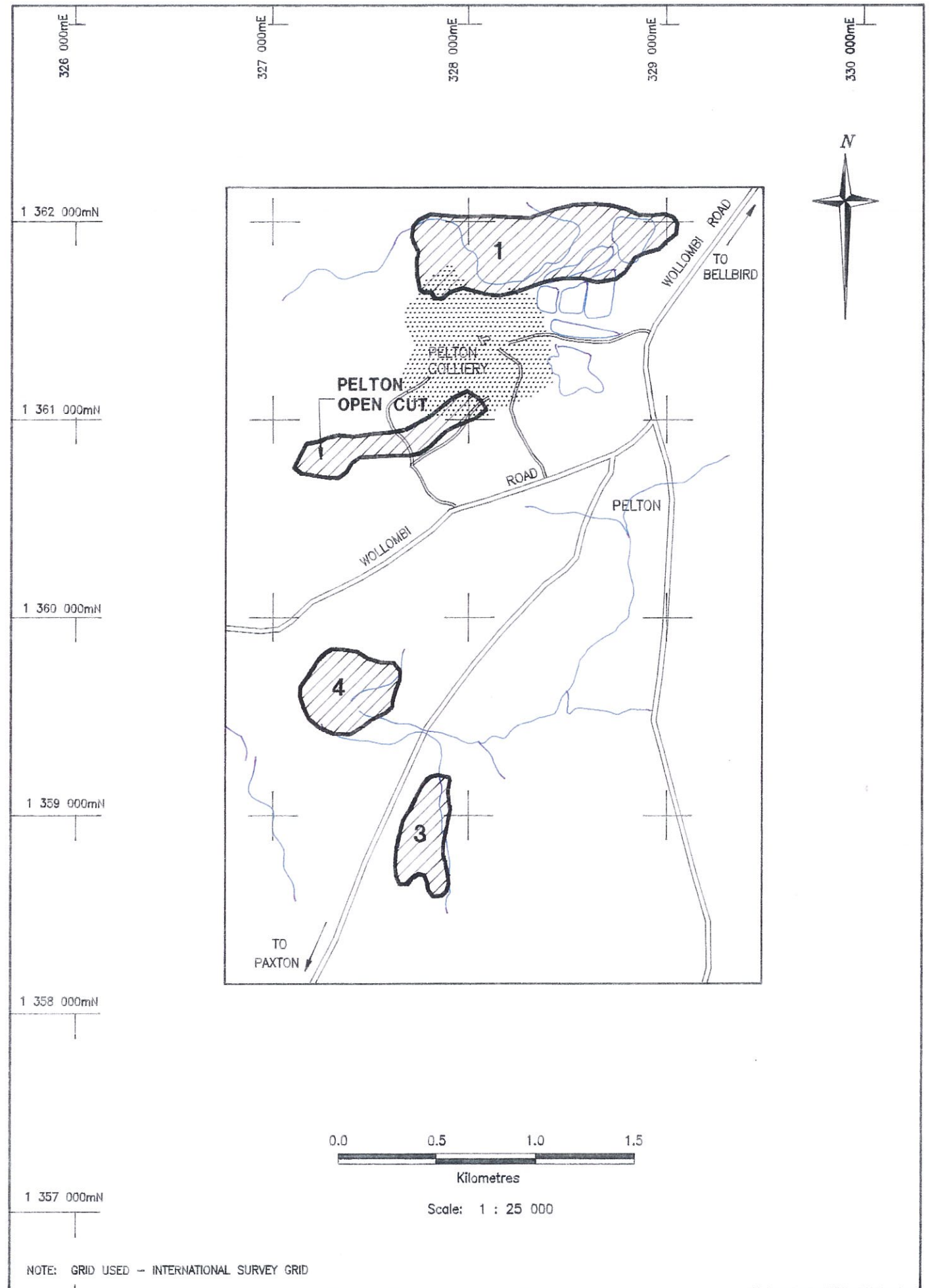


**LEGEND**

- W3 WATER MONITORING STATION
- N3 NOISE MONITORING STATION
- P3 DUST MONITORING STATION







NOTE: GRID USED - INTERNATIONAL SURVEY GRID



HLA-ENVIROSCIENCES PTY LIMITED  
PROJECT No. 1 F1210

LOCAL TRANSPORT  
SYSTEMS

FIG. 4.10a