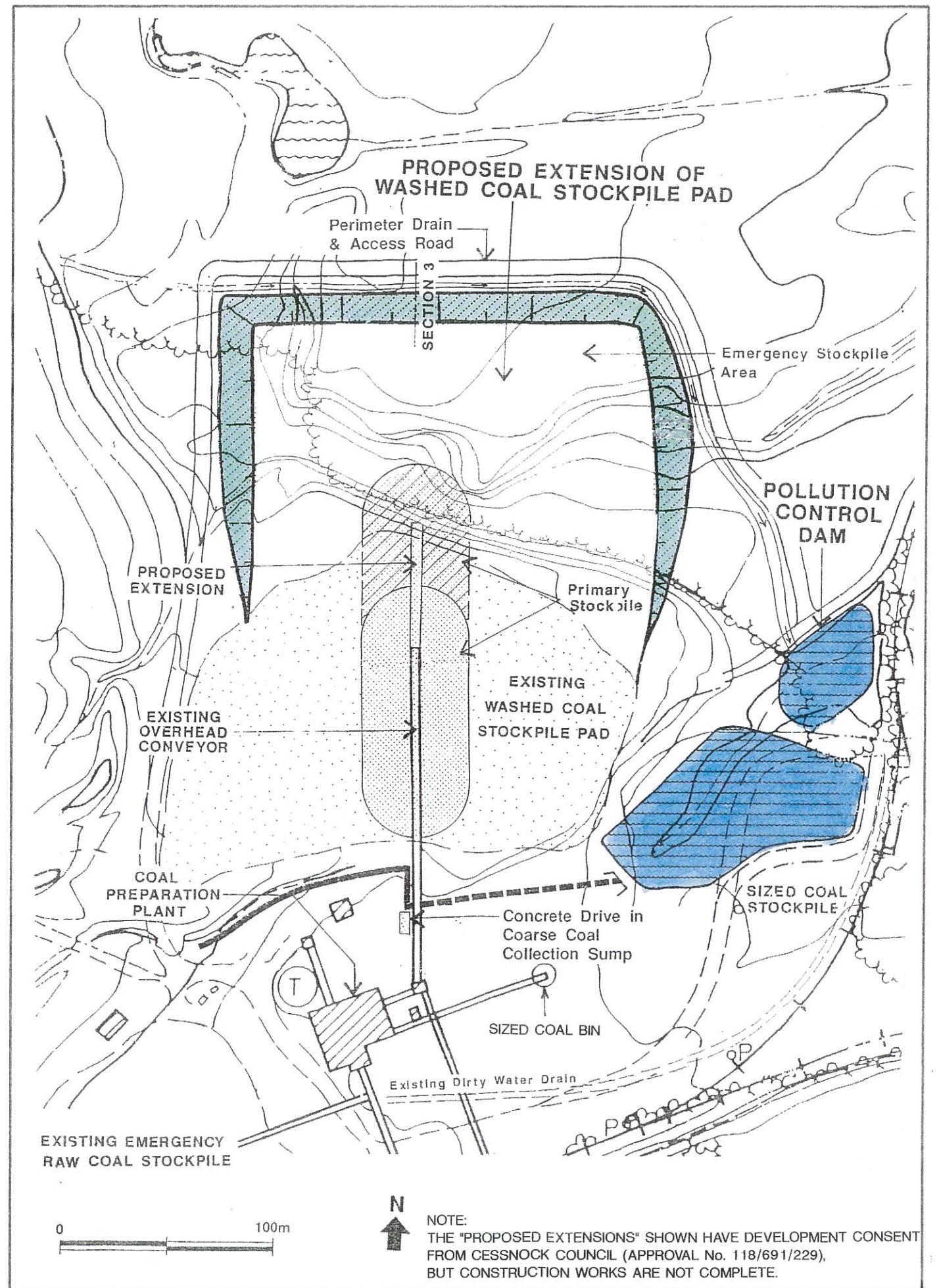
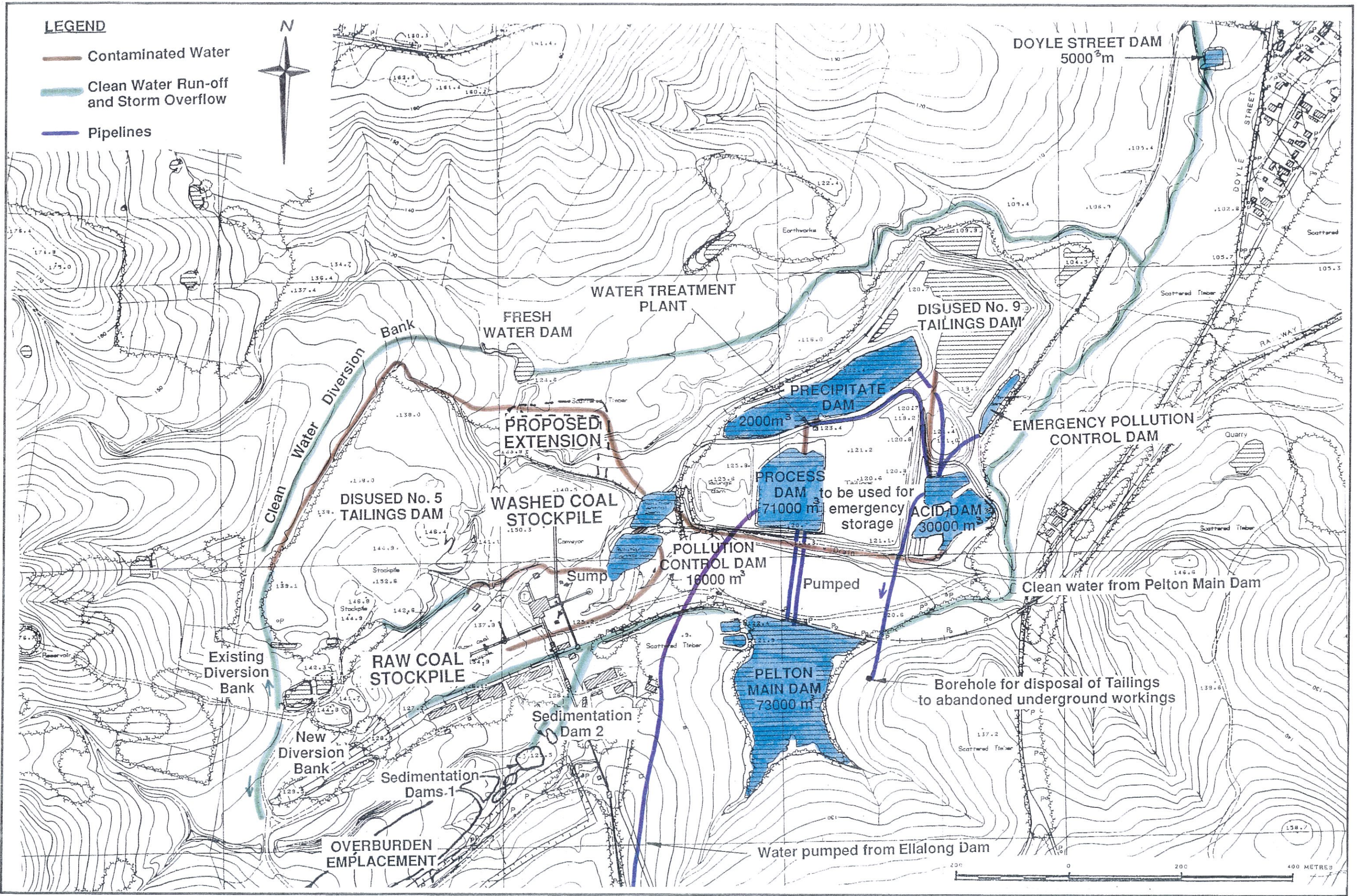
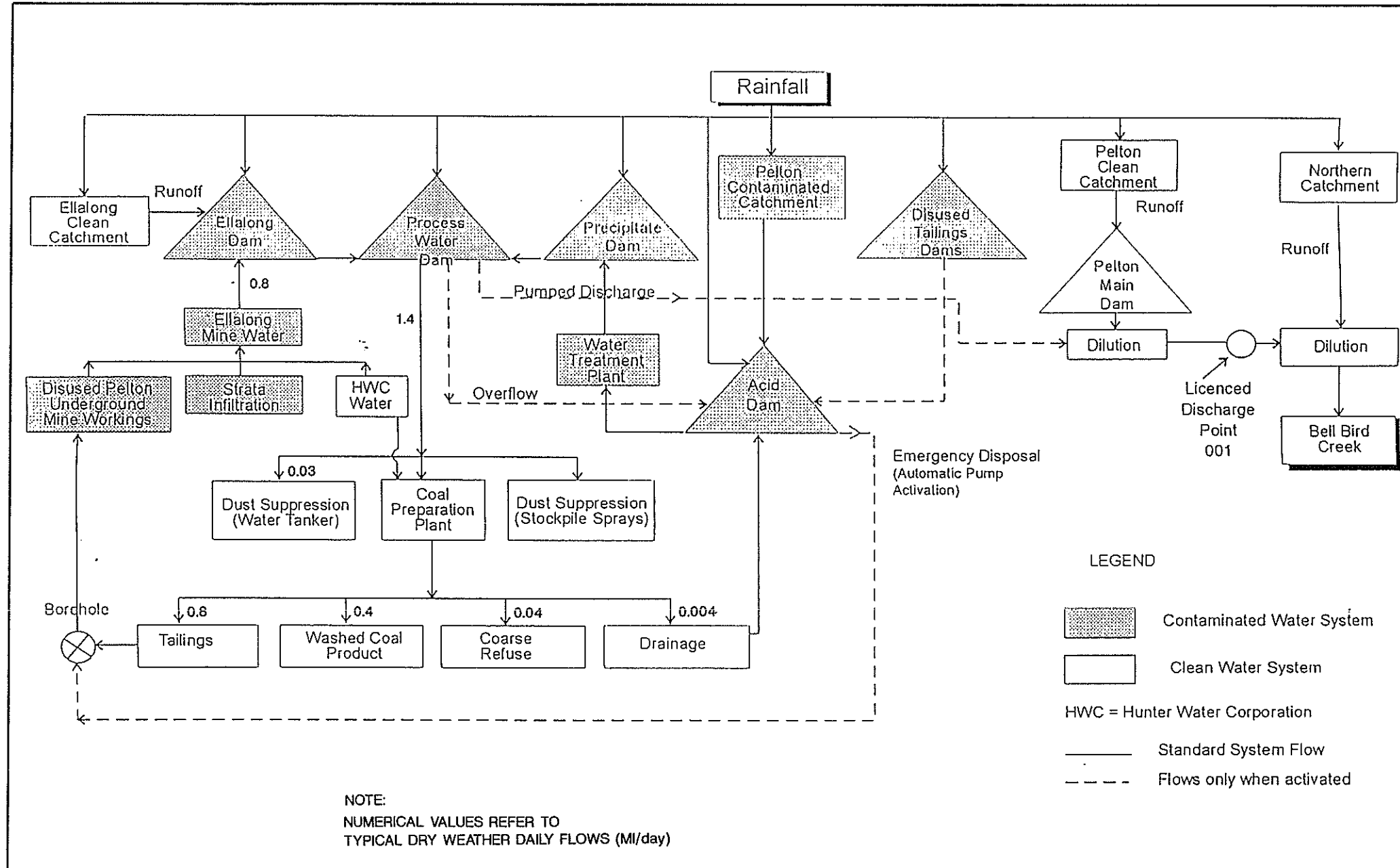

HLA-ENVIROSCIENCES PTY LIMITED
 PROJECT No. F1210

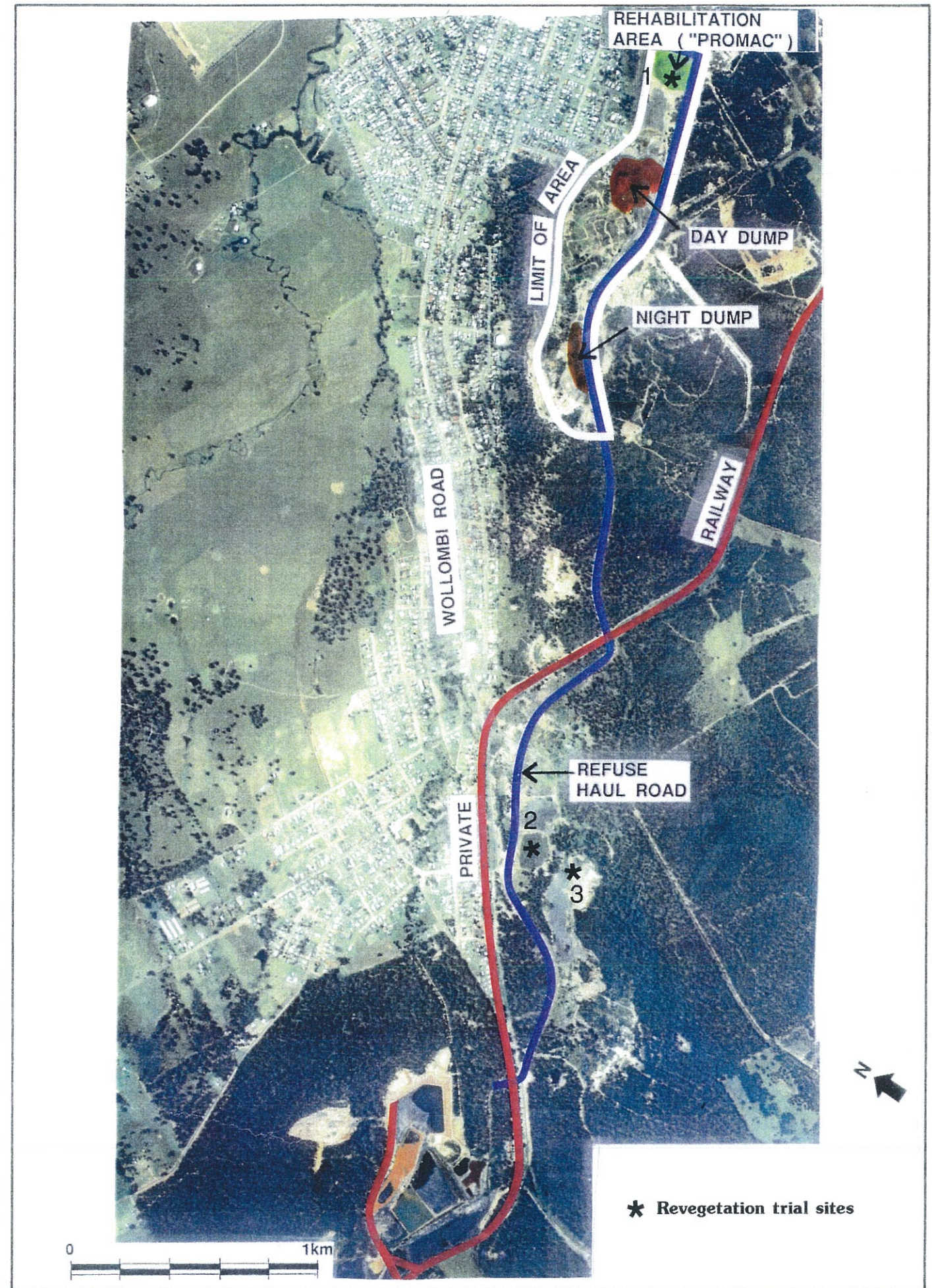
RAW COAL HANDLING PLANT LAYOUT *FIG. 5.1*



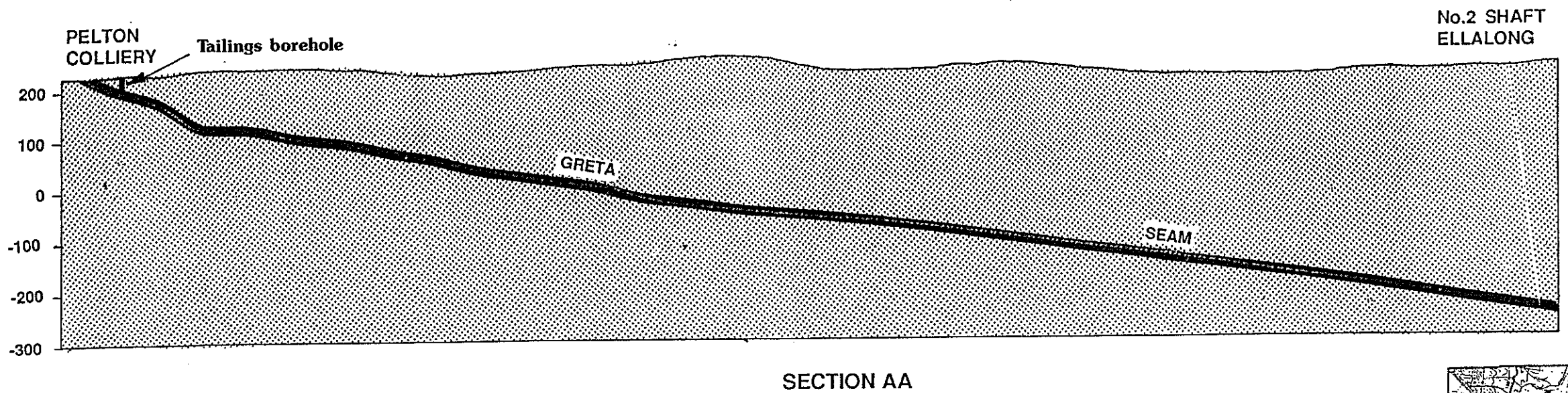




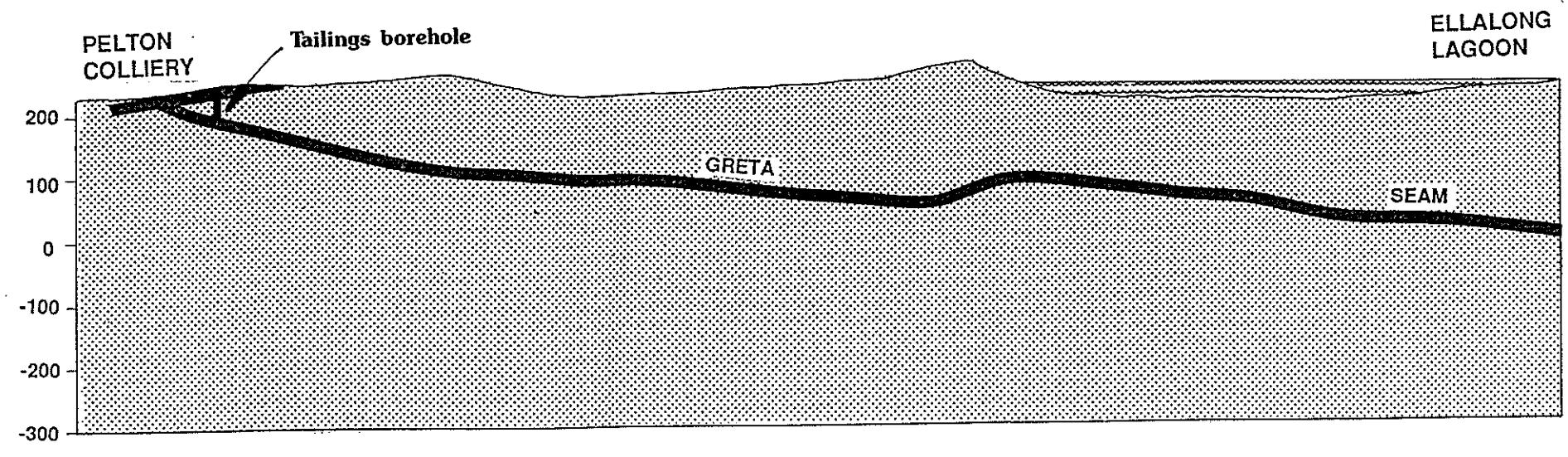
80200 1996.6.3



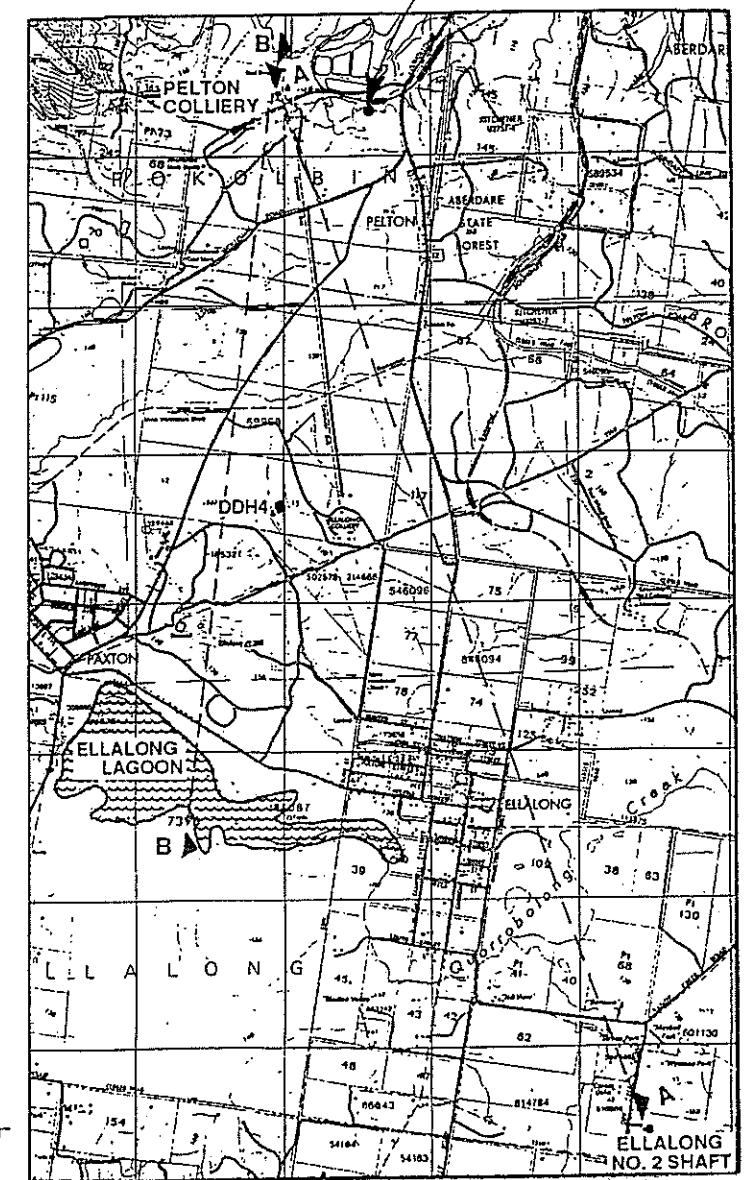




SECTION AA

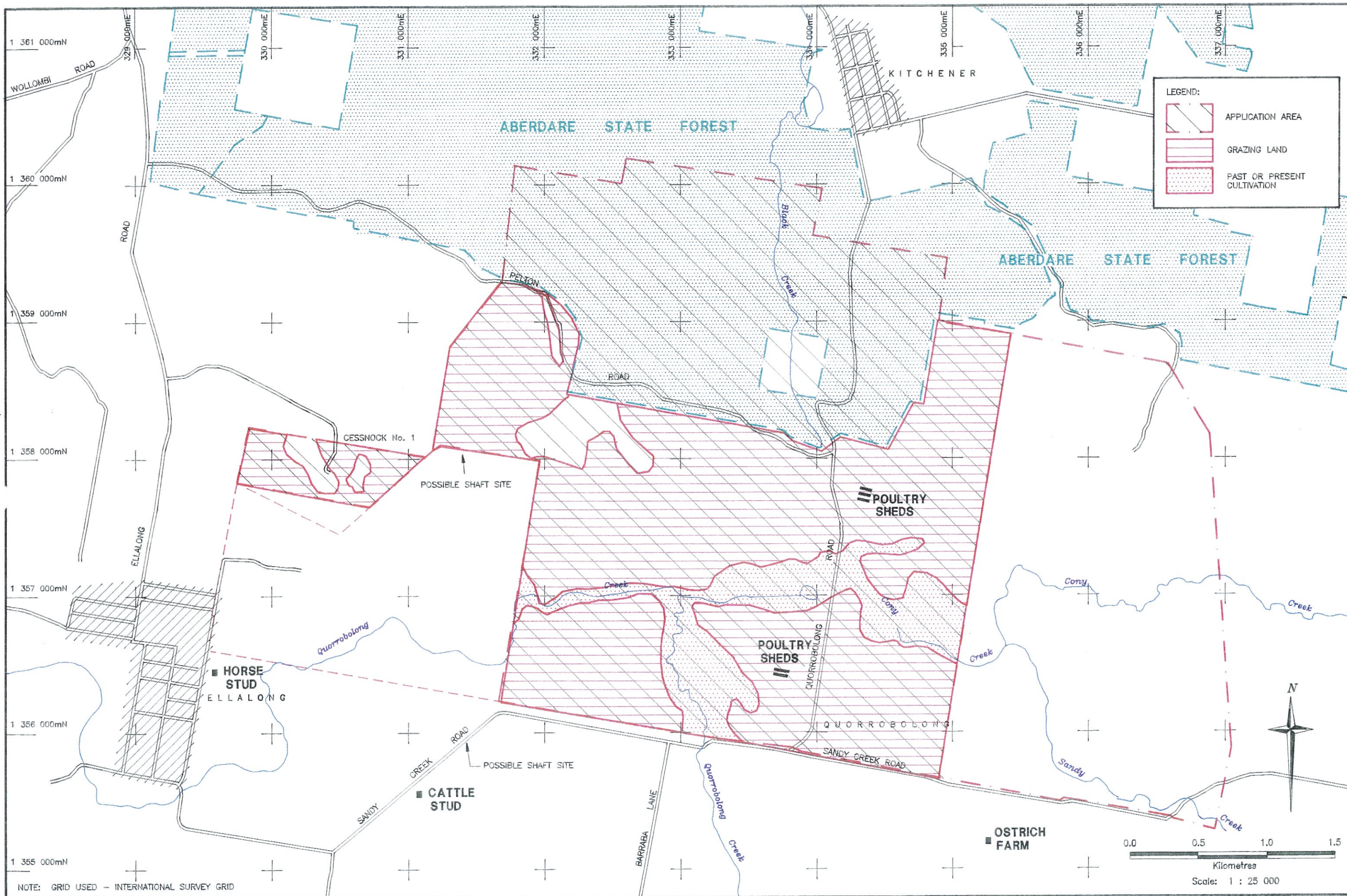


SECTION BB

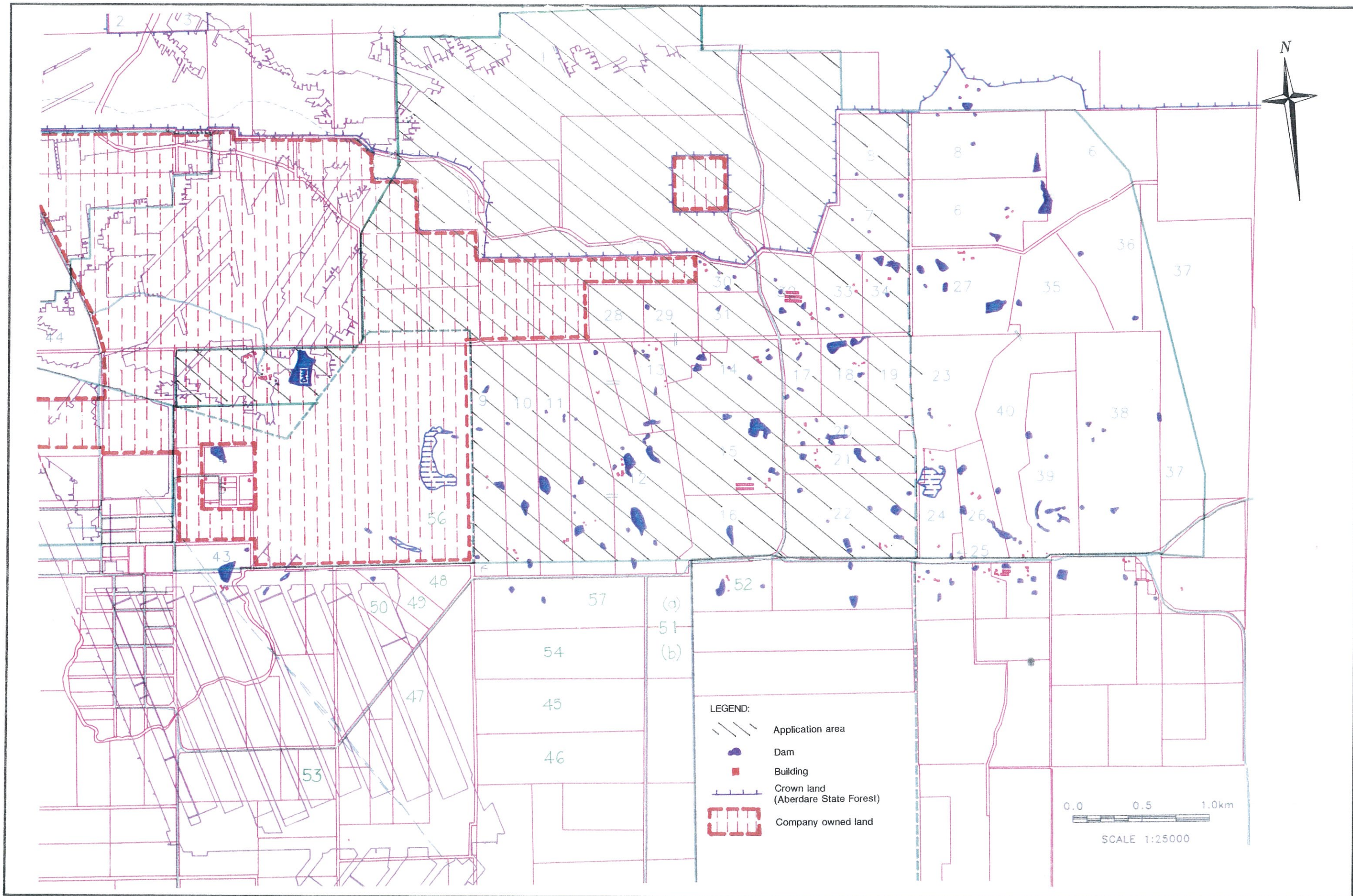


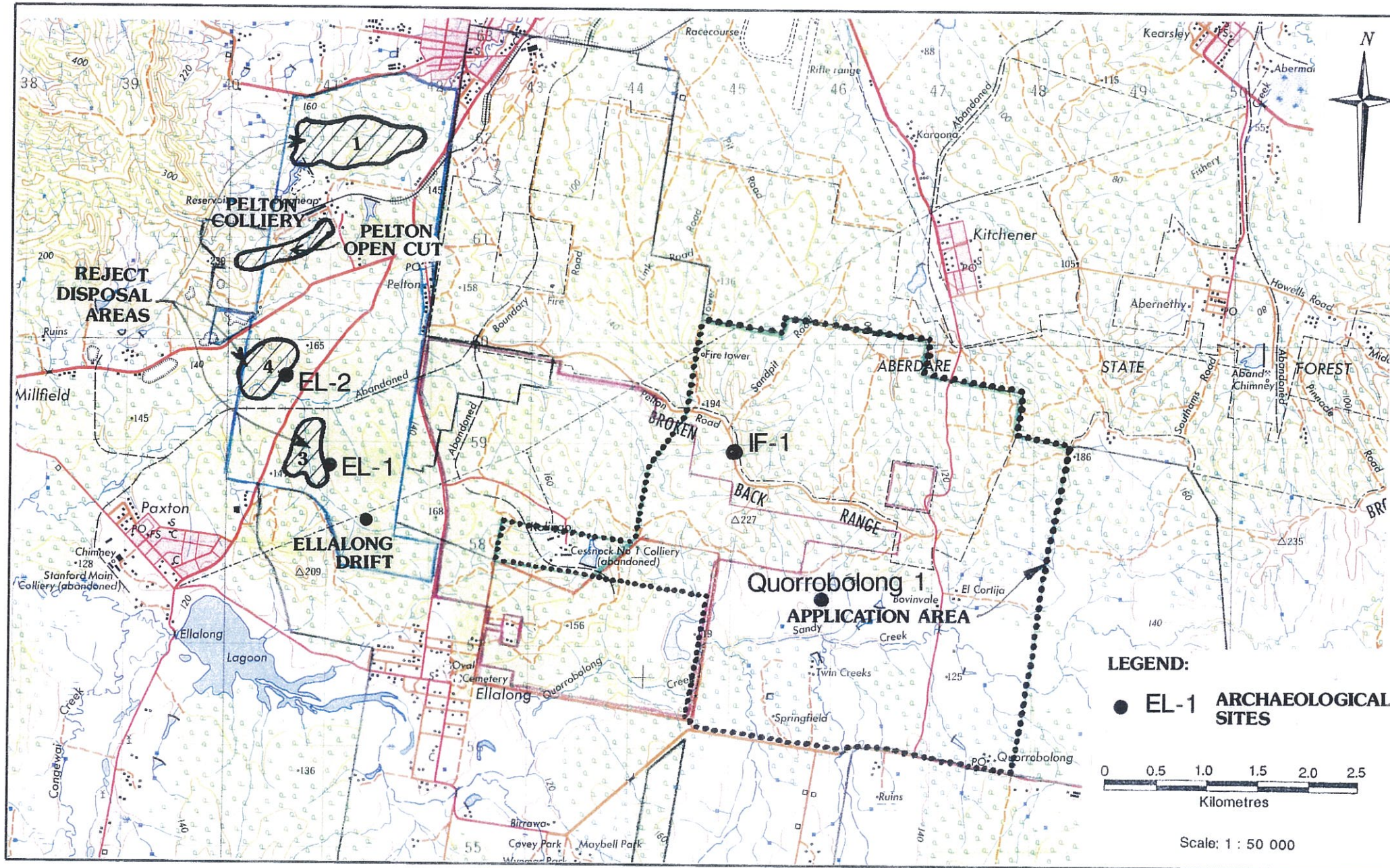
Source: CMA Quorrolong 1:25,000 topographic map






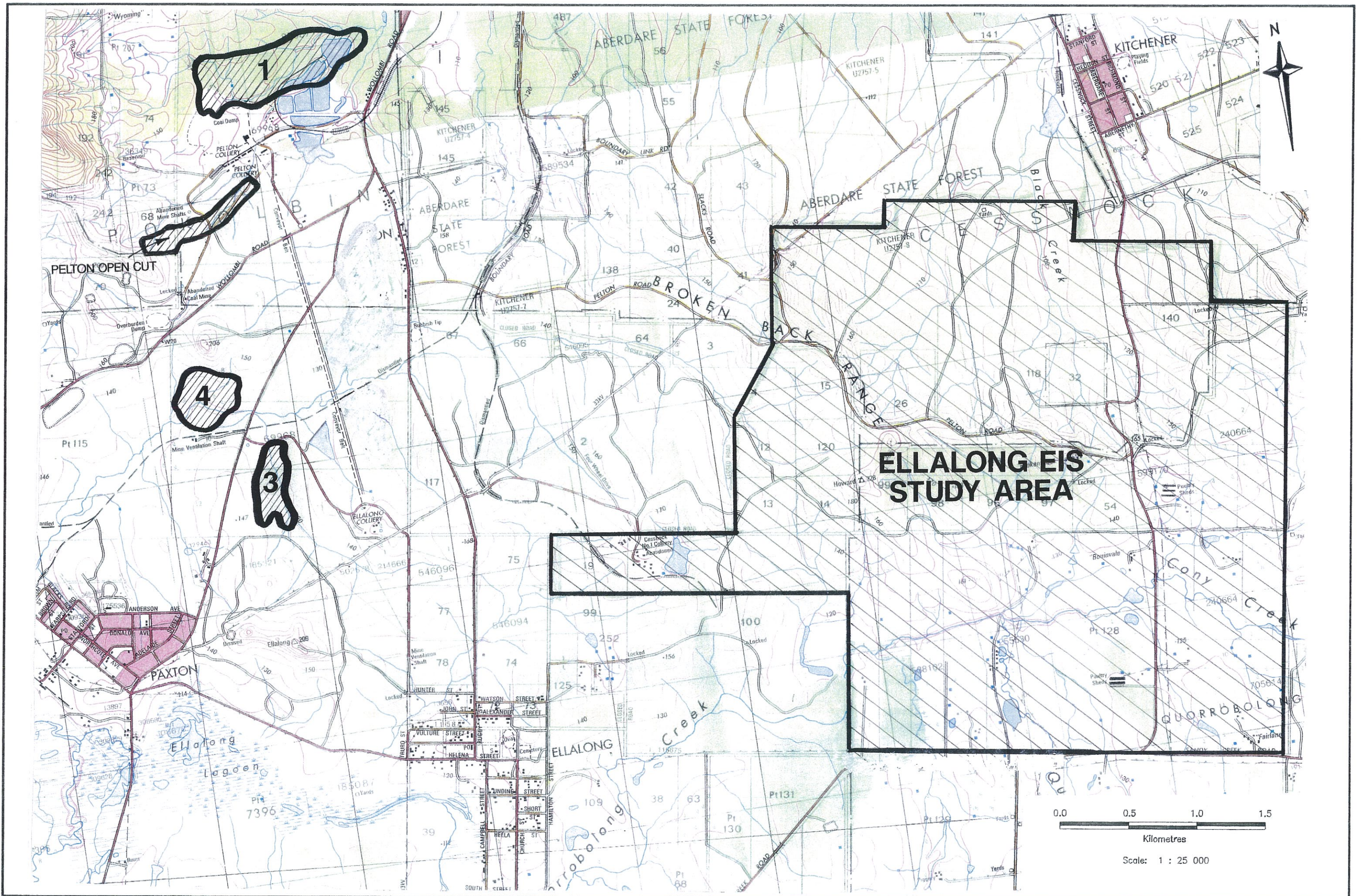
NOTE: GRID USED - INTERNATIONAL SURVEY GRID

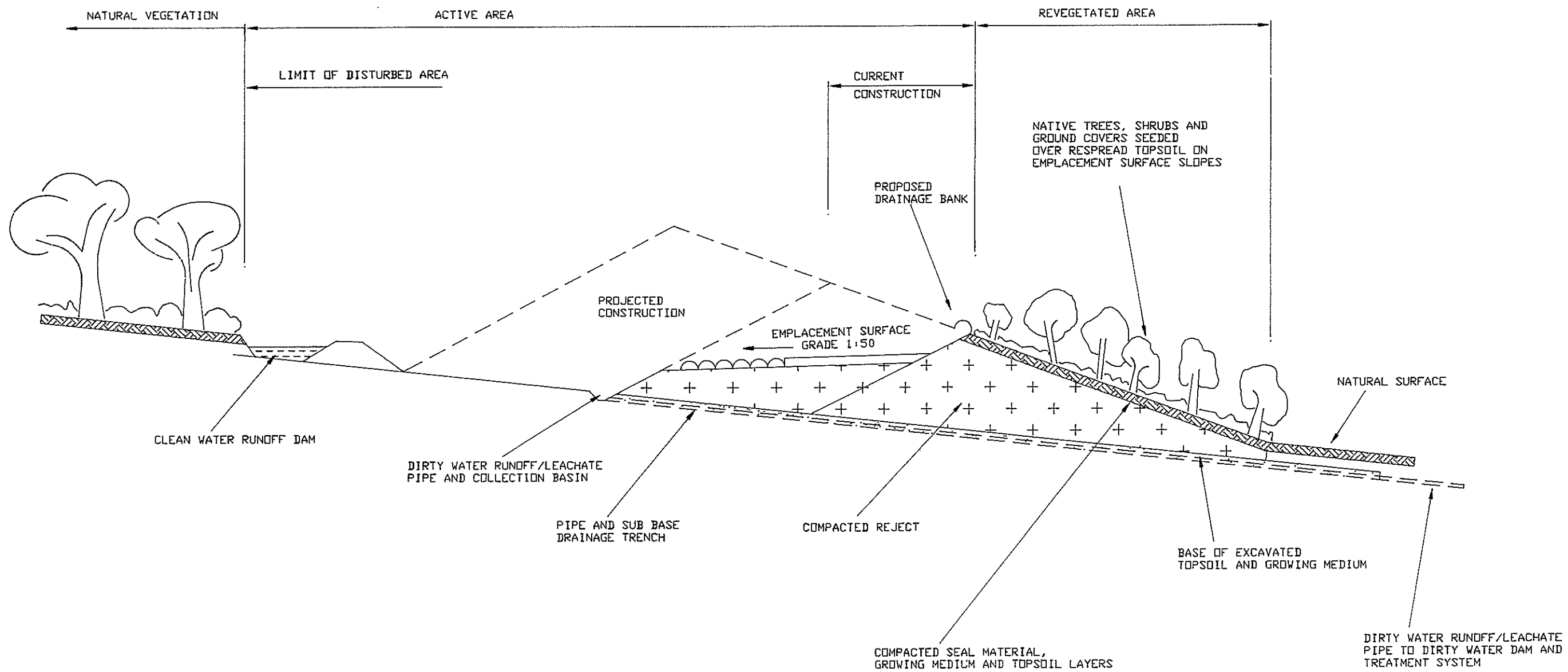





HLA-ENVIROSCIENCES PTY LIMITED
 PROJECT No. 1 F1210

ARCHAEOLOGICAL/ HERITAGE SITES *FIG. 6.3*





NOTE: NOT TO SCALE, FOR DIAGRAMATIC PURPOSES ONLY

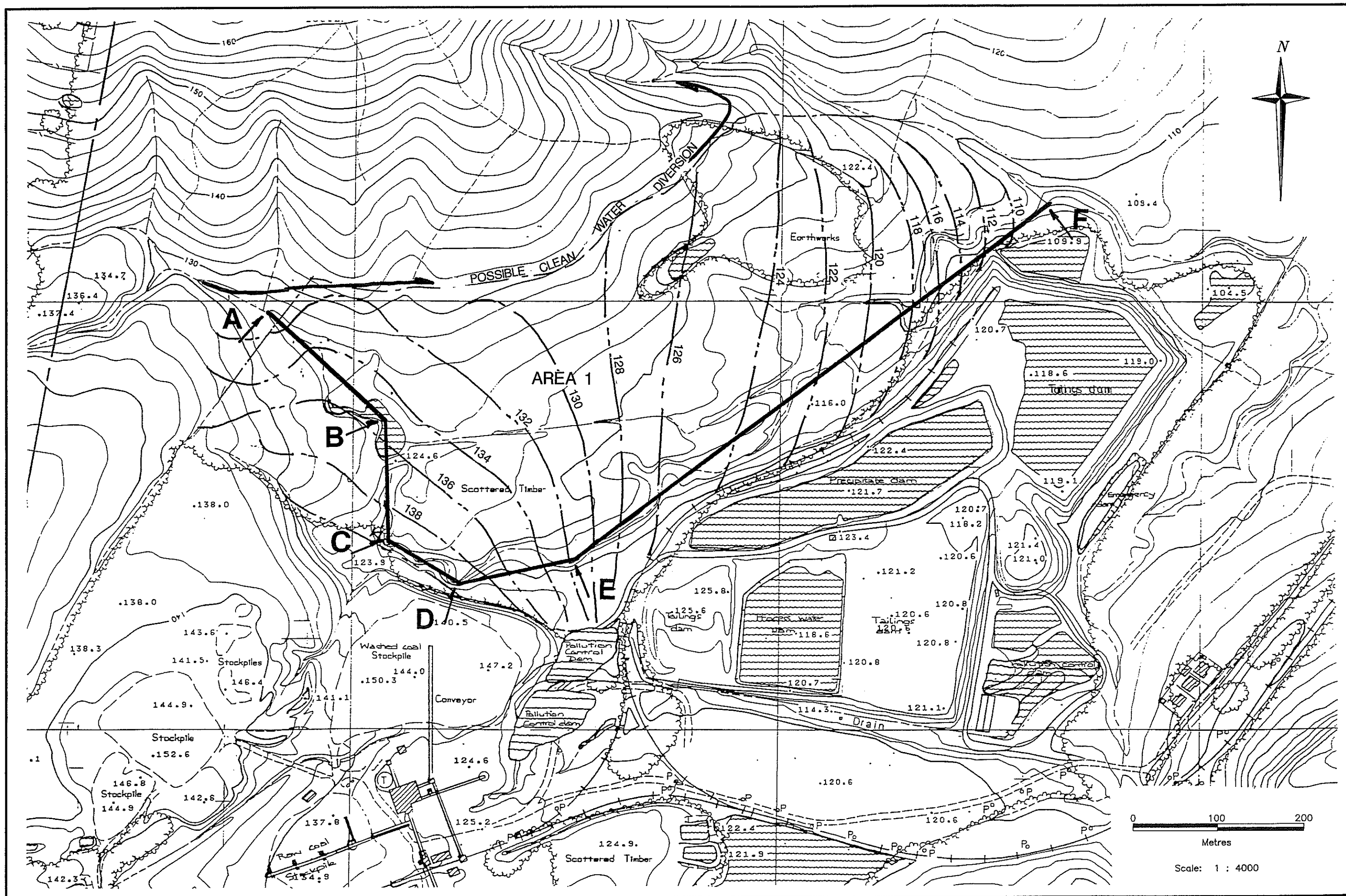


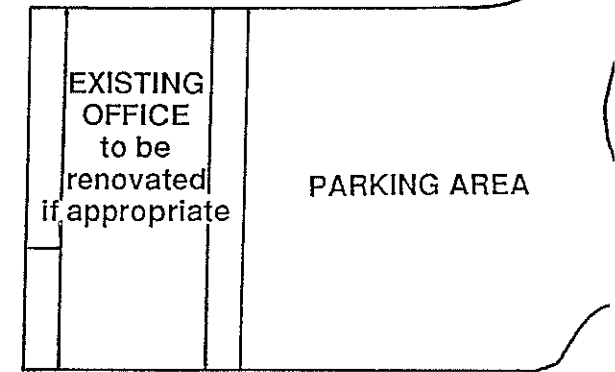
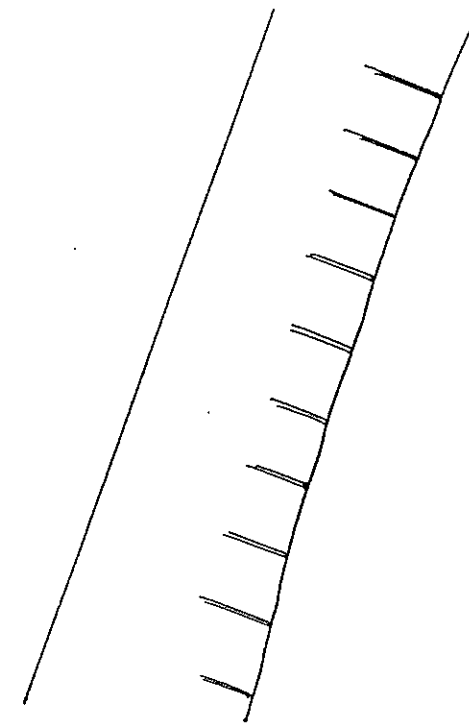
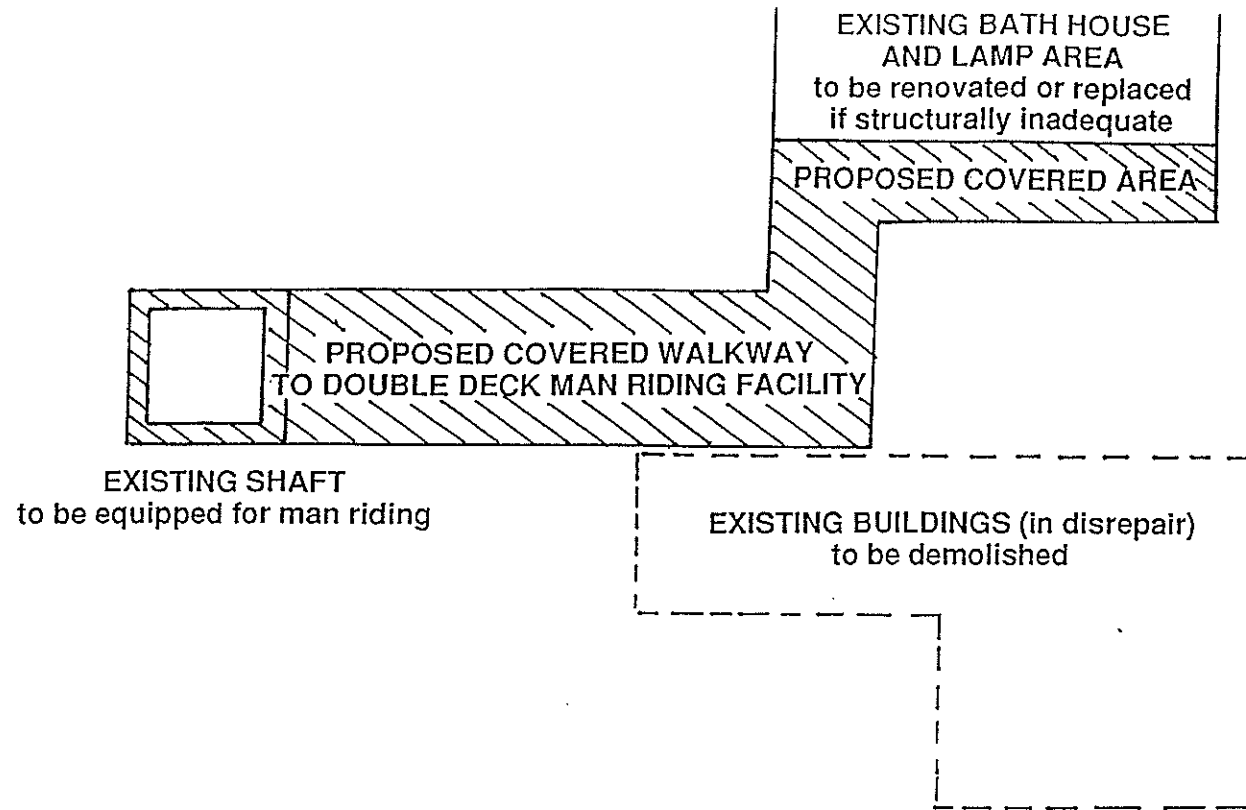
HLA-ENVIROSCIENCES PTY LIMITED

PROJECT No. F1210

REJECT EMPLACEMENT
CONSTRUCTION

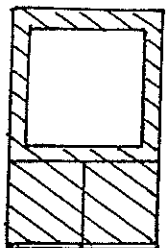
FIG. 7.2



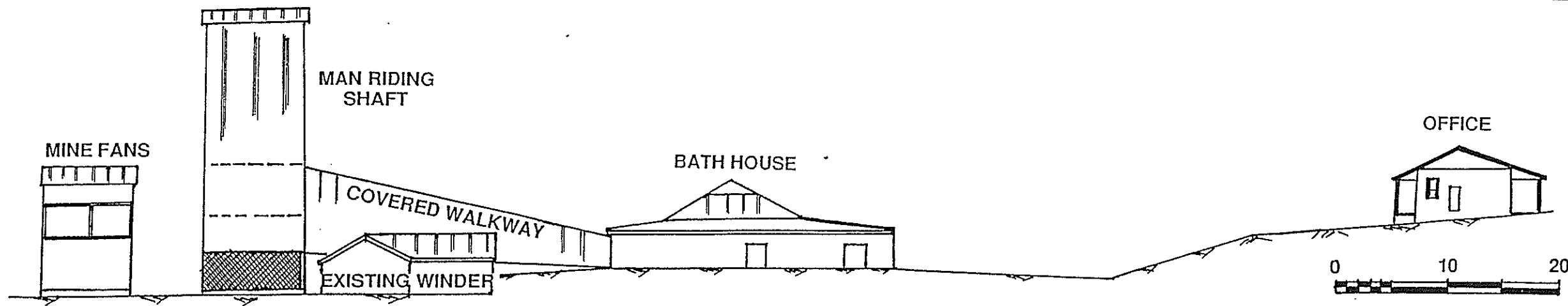


NOTE:
 Conceptual layout includes man riding, bath house and fan facilities.
 These facilities may not all be required at any specific shaft site.

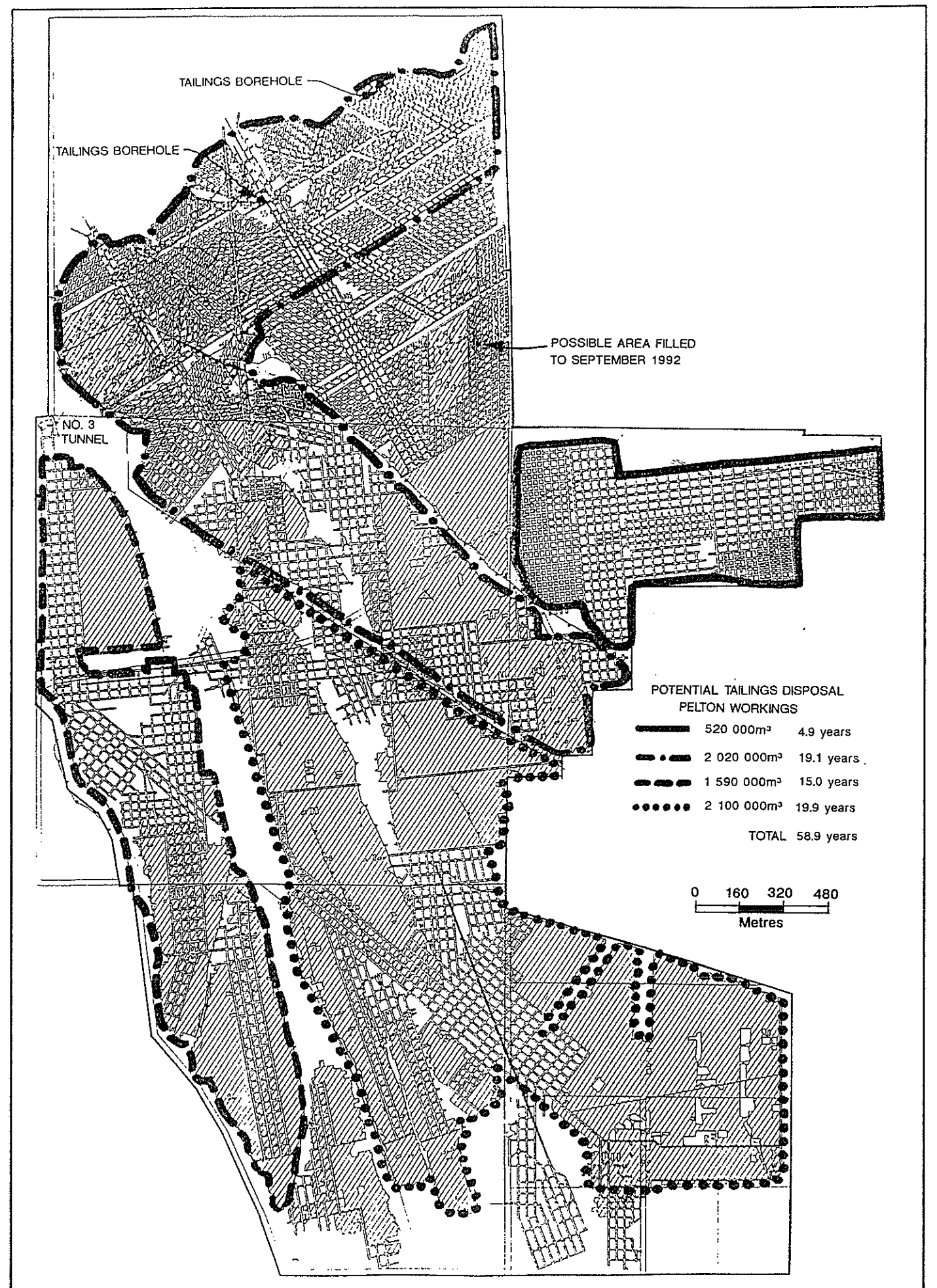
EXISTING SHAFT to be equipped with mine fans

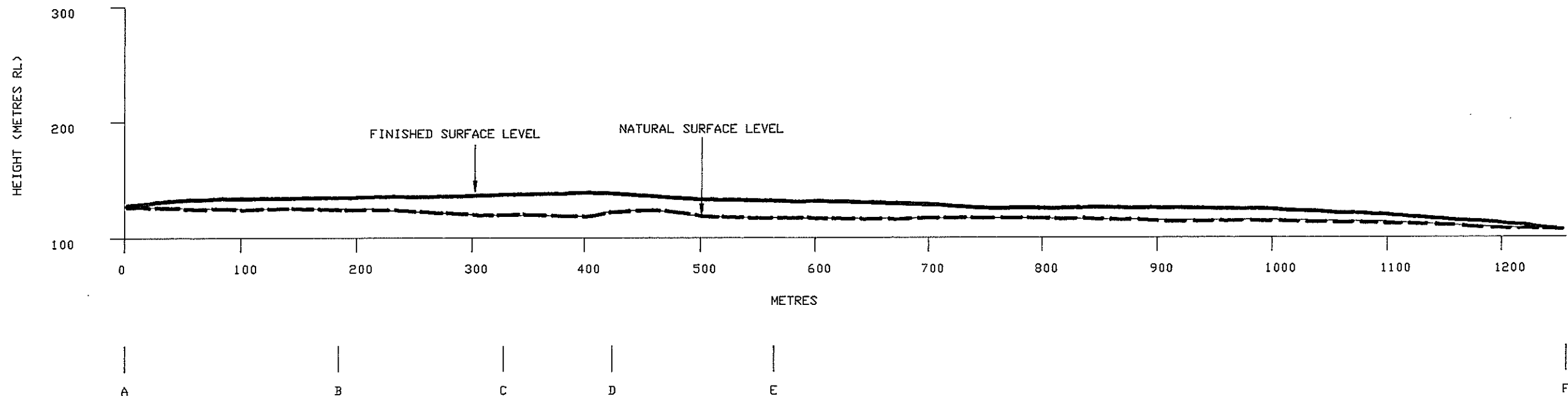


PLAN



ELEVATION





HORIZONTAL SCALE 1:4000
 VERTICAL SCALE 1:4000



