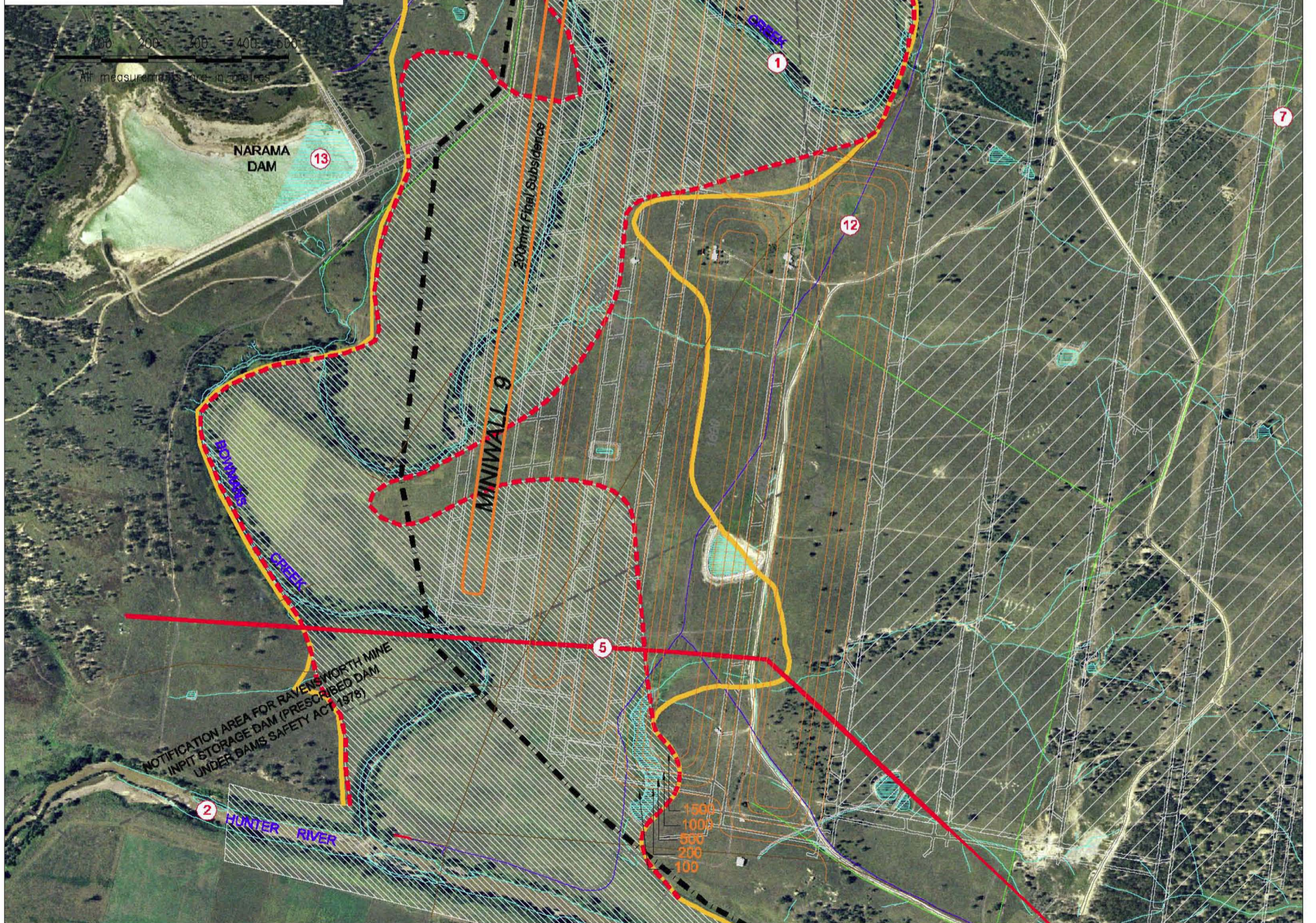


Ref. No.	Subsidence Impacts (per Sect 6.2.4)
1	Bowmans Creek and associated alluvial
2	Hunter River
3	New England Highway
4	Powertel fibre optic cable
5	132kV and 86kV electricity lines
6	Local area electricity line
7	Telstra underground cable
8	Bowmans Creek flow gauging station
9	Brunkers Lane (private road)
10	Macquarie Generation access road
11	Macquarie Generation sedimentation ponds
12	Polyethylene water pipes / tailings pipes
13	Narama Dam
14	Proposed Water Storage Dam (Ravensworth Void 5 flyash dam)
	Ashton Infrastructure comprises fences, a farm access track & tailings pipelines.

Legend	
	Ashton Mining Leases
	Subsidence Contour (depth in mm)
	Powerlines
	Local Powerlines
	Fibre Optic Cable
	Telstra U/G Cable
	Polyethylene Water Pipe
	Road
	Pond / Dam
	Dam Notification Area
	Bowmans Ck. Alluvium Boundary
	Bowmans Ck. Saturated Alluvium Boundary
	Bowmans Ck. Saturated Alluvium



AshtonCoal
 PO Box 699 Singleton NSW 2330
 Phone 61+ 02 6576 1111 Fax 61+ 02 6576 1122

ASHTON UNDERGROUND MINE
Figure 6
Final Predicted Subsidence Contours

Drawing No.
A-9347

Revision No.

Date 06/08/09	Scale: 1:10000/A3	Drawn NM	Checked PF	Approved	Sheet Size A3
------------------	----------------------	-------------	---------------	----------	------------------