



MOOLARBEN COAL PROJECT

S t a g e 2

A P P E N D I X 2A

*Moolarben Coal Project
Newsletters 1 to 6*



Moolarben Coal Exploration Project

Community Newsletter No 1

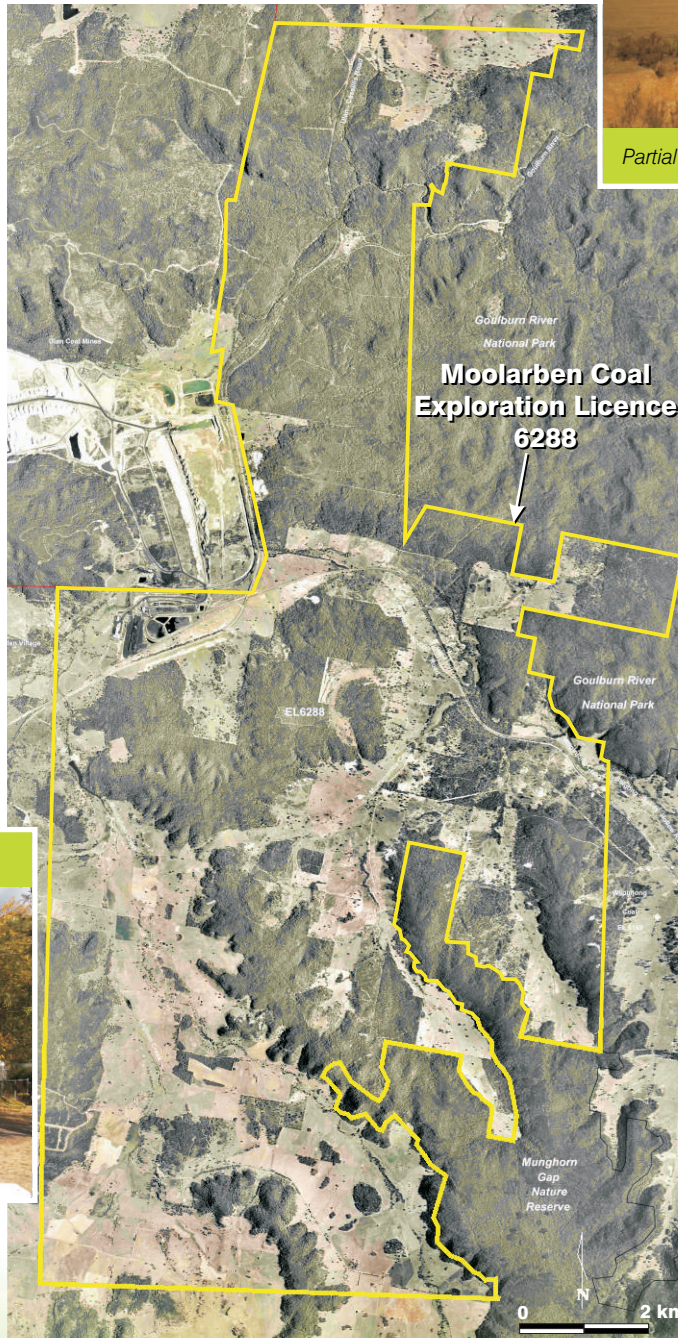
Background

In March 2004, the NSW Minister for Mineral Resources invited Expressions of Interests for an exploration licence in respect to the Moolarben coal exploration area, under the Mining Act 1992.

The Moolarben coal exploration area is located approximately 40 kilometres north-east of the Mudgee township and immediately east of the village of Ulan.

White Mining Limited, in August 2004 was granted Exploration Licence 6288 by the NSW Minister for Mineral Resources. Moolarben Coal Mines Pty Limited is a 100% owned subsidiary of White Mining Limited and is the Exploration Licence Holder. Moolarben Coal Mines Pty Limited is currently undertaking exploration drilling to determine if there is an economic and viable coal resource.

Ulan Public School



Aerial photo showing Moolarben Coal Exploration Area



Partial View of Moolarben Coal Exploration Area

Community Consultative Committee

The Moolarben Community Consultative Committee has been established to provide a forum for open discussion between appointed community representatives, relevant government agencies, other interested stakeholders and Exploration Licence holder concerning exploration drilling.

The Moolarben Community Consultative Committee comprises of an independent Chairperson, representatives from the local community, Mid-Western Regional Council, Department of Primary Industries and Moolarben Coal Mines Pty Limited. The initial meeting of the Moolarben Community Consultative Committee was in September 2004 with meetings held approximately every 3 months.



Exploration Drilling



Drilling Rig

Exploration drilling commenced in the southern sector of the Moolarben coal exploration area in November 2004 and has gradually moved in a northerly direction. The drill rig is currently located in the vicinity of Wollar Road and the private airstrip.

The purpose of the drilling program is to identify the underlying geological conditions which prevail in the area, the location, depth and thickness of coal seams. Coal samples are recovered from the exploration drilling and independently analysed.

The results of the drilling program and coal

testing will assist Moolarben Coal Mines Pty Limited in determining whether or not an economic and viable coal resource exists in the area.

Environmental Program

Moolarben Coal Mines Pty Limited are undertaking baseline environmental studies and monitoring in conjunction with exploration drilling. In the event that the exploration drilling confirms a viable coal resource potentially exists, the data collected from the environmental studies and monitoring would be used in the preparation of an environmental impact statement. Air and surface waters are monitored on a monthly basis whilst the areas ground water is being progressively monitored by the installation of piezometers as exploration drilling progresses.



Weather station

Community Information Sessions

Residents in the Ulan, Cooks Gap, Moolarben and Bobadeen areas and persons interested in the Moolarben Coal Exploration Area are invited to attend community information sessions to be held at the Ulan Community House on Thursday 2nd June and Friday 3rd June 2005 between the hours of 9.00am and 7.30pm.



Surface water monitoring

For further information regarding Moolarben Coal Exploration Project please contact:

Ian Callow



Moolarben Coal Mines Pty Limited

Level 14, 213 Miller Street, North Sydney NSW 2060
Ph: (02) 9922 3777 Fax: (02) 9923 2427
Mobile: 0419 622 155
Email: icallow@whitemining.com.au



Moolarben Coal Exploration Project

Community Newsletter No 2



Background

The Moolarben coal exploration area is located approximately 40 kilometres north-east of the Mudgee township and immediately east of the village of Ulan.

The NSW Minister for Mineral Resources in August 2004 granted White Mining Limited Exploration Licence 6288. Moolarben Coal Mines Pty Limited is a 100% owned subsidiary of White Mining Limited and is the holder of Exploration Licence 6288, Exploration drilling commenced shortly after the granting of the exploration licence.

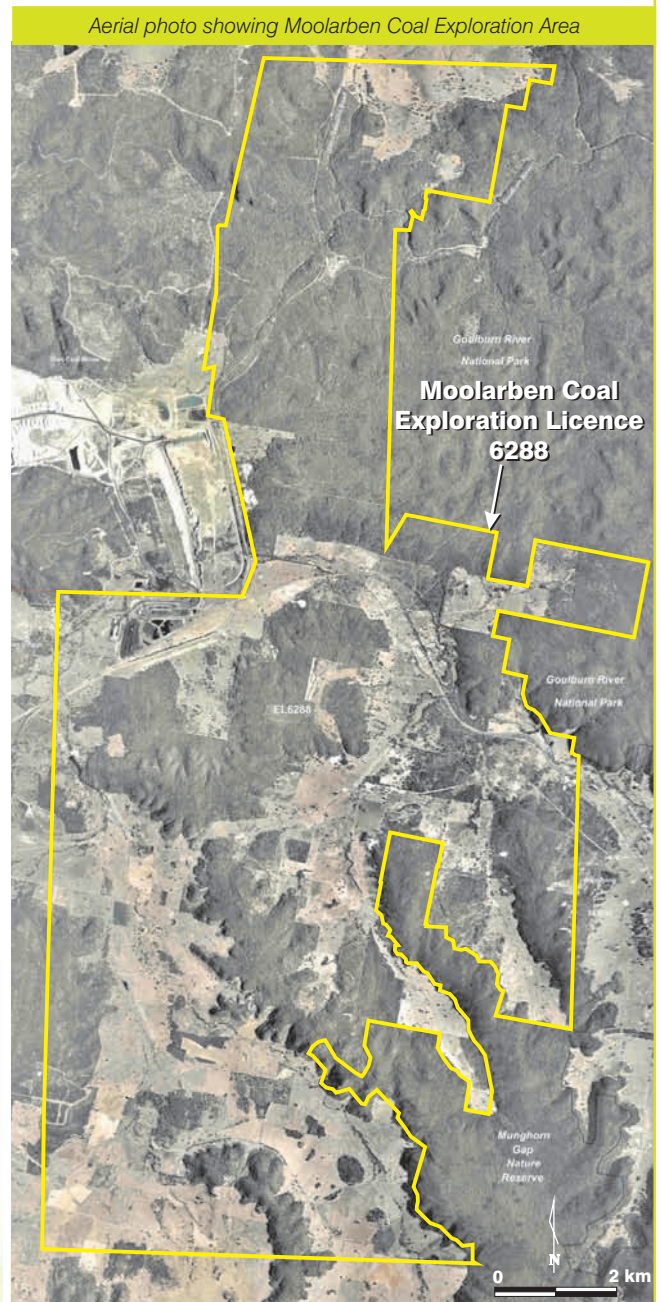
Community Consultative Committee

The Moolarben Community Consultative Committee has been established to provide a forum for open discussion between appointed community representatives, relevant government agencies, land

owners, interested stakeholders and the holder of Exploration Licence 6288 concerning drilling and associated activities.

The Moolarben Community Consultative Committee has

an independent Chairperson and comprises representatives from the local community and government related organisations. The committee generally meets about every 2 to 3 months to discuss with the exploration holder issues and concerns about exploration drilling and associated activities.



Exploration Drilling

Exploration drilling is undertaken to determine the underlying geological conditions which prevail in the exploration area including the location, depth and thickness of coal seams. Drilling and site rehabilitation have been hampered due to recent rains and the exploration geologist has relocated the drill rig to suitable properties in the Murrumbidgee and Moolarben Creek Valleys in an effort to keep the program on schedule.

The assistance of local land owners is acknowledged and we thank you for your support.



Drilling Rig

Notwithstanding the difficulties caused by wet ground conditions the drilling program, involving survey and geophysical logging of exploration holes has identified coal resources sufficient to support a coal mine project comprising of

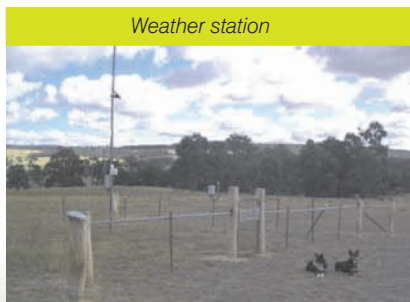
open-cut and underground (longwall) mining with associated infrastructure. Independent laboratories have confirmed that the coal resource consists of export and domestic qualities.

Environmental Program

Moolarben Coal Mines Pty Limited are undertaking baseline environmental studies and monitoring in conjunction with exploration drilling. Air and surface waters are monitored on a monthly basis whilst the areas ground water is being progressively monitored by the installation of piezometers as exploration drilling progresses.

Other specialist studies currently being conducted include aboriginal and european heritage, ecology, soils, surface and ground waters, noise, air quality, traffic, visuals and land use.

The assistance and support of local land owners to conduct the studies, which at times causes an inconvenience to farm operations and family life, is acknowledged and we thank you for your assistance.



Weather station



Surface water monitoring

Part 3A Application for Coal Mine

Based on the results of exploration and laboratory results, Moolarben Coal Mines Pty Limited has made application to the Minister for Planning for project approval under Part 3A of the Environmental Planning and Assessment Act, 1979 for the construction and operation of a coal mine to be known as the Moolarben Coal Project.

The Moolarben Coal Project will be subject to the environmental assessment and public consultation requirements under Part 3A of the Environmental Planning and Assessment Act, 1979.

Community Information Sessions

Residents in the Ulan, Cooks Gap, Moolarben and Bobadeen areas and persons interested in the Moolarben Coal Exploration Licence 6288 area are invited to attend community information sessions to be held at the Ulan Community House, Main Street, Ulan on Thursday, 13th October 2005 and Friday, 14th October 2005 between the hours of 9.00am and 7.30pm.

For further information regarding Moolarben Coal Exploration Project please contact:

Ian Callow



Moolarben Coal Mines Pty Limited

Level 14, 213 Miller Street, North Sydney NSW 2060

Ph: (02) 9922 3777 Fax: (02) 9923 2427

Mobile: 0419 622 155

Email: icallow@whitemining.com.au



Moolarben Coal Exploration Project



Community Newsletter No 3



March 2006

Background

The Moolarben coal exploration area is located approximately 40 kilometres north-east of the Mudgee township and immediately east of the village of Ulan.

The NSW Minister for Mineral Resources in August 2004 granted White Mining Limited Exploration Licence 6288. Moolarben Coal Mines Pty Limited (MCM) is a 100% owned subsidiary of White Mining Limited (which recently merged with Felix Resources Ltd) and is the holder of Exploration Licence 6288. Exploration drilling commenced shortly after the granting of the exploration licence.

Community Consultative Committee

The Moolarben Community Consultative Committee has been established to provide a forum for open discussion between appointed community representatives, relevant government agencies, land owners and the holder of Exploration Licence 6288 concerning exploration drilling and associated activities.

The Moolarben Community Consultative Committee has an independent Chairperson and generally meets every 2 to 3 months.

Exploration Drilling

Exploration drilling is undertaken to determine the underlying geological conditions that prevail in the exploration area including the location, depth, thickness and quality of coal seams. Recent exploration drilling has included:



- Drilling within the area known as Underground No.4, (this is in addition to the significant drilling activities that occurred the 1970 - 80s). This work will assist in predicting subsidence and determining the quality of the underground resource; and
- Drilling within the Murrumbidgee Valley, where there are potentially mineable coal resources.

Drilling in the coming months will also look to further prove coal resources within the northern half of the exploration licence.

The assistance of the local landowners is acknowledged and we thank you for your support.

Environmental Monitoring Program

MCM are undertaking baseline environmental monitoring in conjunction with exploration drilling. Air quality and surface waters are monitored on a monthly basis. Groundwater is also being monitored through existing bores and the installation of piezometers and test bores.



Director-General's Requirements / Environmental Assessment Requirements

The key environmental assessment requirements for the project are briefly described below:

- Surface and groundwater, including water balances and salinity budgets, changes to the groundwater regimes, stream and riparian impacts;
- Subsidence impacts on surface streams, groundwater and Aboriginal and European cultural heritage;
- Threatened species and endangered ecological communities, vegetation offsets, aquatic and groundwater dependant ecosystems and impacts to the adjacent national park estate;
- Noise, blasting and vibration impacts on Ulan village, adjoining landholders and rail transport noise;
- Air quality, in particular dust impacts on Ulan village and greenhouse gas emissions;
- Short and long term impacts on the local and regional community in terms of socio-economics;
- Road traffic and transport impacts, heritage, soils and land capability and visual impacts; and
- An assessment of the potential cumulative impacts that may arise from the combined operation of the various open cut and underground elements of the project during the life of the mine, together with the Ulan Coal Mine and the approved Wilpinjong Coal Mine.

The Environmental Assessment Report

The Moolarben Coal Project is subject to environmental assessment and public consultation requirements under Part 3A of the Environmental Planning and Assessment Act, 1979.

The proponent (MCM) was required to hold a Planning Focus Meeting (PFM). The relevant government agencies at the PFM held on 20 October 2005 identified key environmental assessment requirements associated with the project. These requirements are contained in the Director-General's Requirements (DGR's), which can be viewed at:

<http://www.planning.nsw.gov.au/asp/register.asp>

The environmental assessment requirements must, at a minimum, be sufficiently investigated, answered and reported within the Environmental Assessment Report and lodged for determination with the NSW Minister for Planning.



Environmental Assessment Key Preliminary Findings

Soils

Soil, land and agricultural capability mapping has been completed across the entire Exploration Licence 6288 area. The major soil types encountered in the area are include Yellow Podzolic, Red Podzolic, Earthy Sands, Yellow Solodic, Lithosols and Alluvial soils. Land suitability in the area ranged from discrete areas of Class III land suitable for regular cultivation through to Class VIII land that is best suited to timber.

Traffic

A traffic impact assessment and road safety audit is being prepared in accordance with requirements of the Mid-Western Regional Council and Roads and Traffic Authority to ensure the safety of the travelling public is maintained.

Noise & Vibration

Discussions with the Department of Environment and Conservation have been ongoing to ensure the best outcome is reached for the project and community particularly for the village of Ulan. Modelling of the potential noise and blasting impacts has determined the project will be able to operate within the criteria imposed by the Industrial Noise Policy and ANZECC guidelines.

Surface Water

A surface water assessment of the site has been largely completed. A component of the study calculated the 1 in 100 year flood level for the Moolarben, Bora Creeks and the Goulburn River catchments. Consistent with the previous approval for the Underground No.4 coal mine and associated infrastructure granted in 1985, Bora Creek will require a small diversion to facilitate the construction and operation of the infrastructure in this area. Spring Creek, located within the southern portion of Open Cut 3 will also require a small diversion around the mining operations. The integrity of Moolarben Creek will



be maintained and enhanced through riparian revegetation activities.

Groundwater

The groundwater investigation is ongoing with piezometers installed across the Development Application area. The piezometer density for the Development Application area meets the Department of Natural Resources guidelines for groundwater assessment. These bores are monitored to enable the development of an effective groundwater model of the region and to allow detailed assessment of potential impacts and mitigation measures.

Flora, Fauna and Aquatic

Assessments of flora, fauna and aquatic communities across the Development Application area has been completed and is currently being documented. Some threatened species and endangered ecological communities will potentially be impacted as a result of mining. However a comprehensive rehabilitation and vegetation offset package is being developed that will more than adequately address and make up for these impacts.



Aboriginal and European Heritage

Aboriginal heritage has been assessed across the Development Application area. Over 80 transects were completed that identified a significant number of aboriginal objects and sites. The assessment of impacts, mitigation and management is currently being prepared in conjunction with the local aboriginal communities.

European heritage has been assessed throughout the Development Application area, this comprised interviews with local residents, onsite inspections and research of various archival records. The assessment identified a number of items throughout the area that had significance. Prior to the commencement of mining, potentially impacted sites will be recorded by a qualified archaeologist. These records will be

made available to the public.



Subsidence

The proposed Underground No.4 coal mine and adjoining lands has been assessed for impacts associated with subsidence. The maximum expected subsidence over the longwall panels is predicted to range between 1.6 metres and 2.5 metres for cover depths from 85 to 180 metres. The scenic Drip and Hands on Rock areas north of the underground mine will not be impacted by subsidence.

Socio-Economic

The Moolarben Coal Project will have a positive impact on the local, state and national economies. The project will support up to 200 jobs during construction and potentially 250 during operations.

Community Information Sessions

Residents in the Ulan, Cooks Gap, Moolarben and Bobadeen areas and persons interested in the Moolarben Coal Exploration Project are invited to attend our third Community Information Session to be held at the Ulan Community House on Wednesday 8th March and Thursday 9th March 2006 between the hours of 9:00am and 7:00pm.

For further information regarding Moolarben Coal Exploration Project please contact:

Ian Callow



Moolarben Coal Mines Pty Limited

Level 14, 213 Miller Street, North Sydney NSW 2060 Ph: (02) 9922 3777 Fax: (02) 9923 2427 Mobile: 0419 622 155
Email: icallow@whitemining.com.au





Community Newsletter No 4



September 2007

Background

The Moolarben coal exploration area is located approximately 40 kilometres north-east of the Mudgee township and immediately east of the village of Ulan.

The NSW Minister for Mineral Resources in August 2004 granted White Mining Limited Exploration Licence 6288. Moolarben Coal Mines Pty Limited is a subsidiary of Felix Resources Limited and is the holder of Exploration Licence 6288. Exploration drilling commenced shortly after the granting of the exploration licence.

Community Consultative Committee

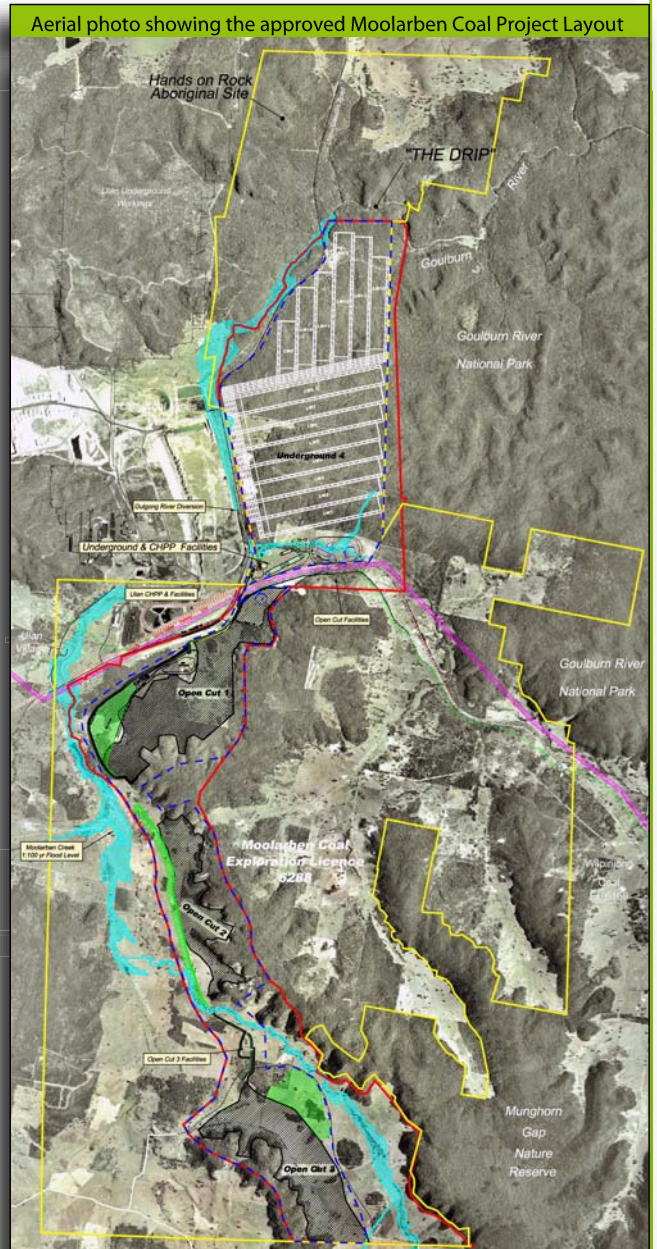
A Moolarben Coal Project Community Consultative Committee was established to provide a forum for open discussion between appointed community representatives, relevant government agencies, land owners and the holder of Exploration Licence 6288 concerning exploration drilling and associated activities. With the granting of approval for the Moolarben Coal Project the Minister for Planning has directed that a newly appointed Community Consultative Committee be established.

Coal Resources

Exploration drilling was undertaken to determine the underlying geological conditions that prevail in the exploration area including the location, depth, thickness and quality of coal seams.

Exploration drilling has been largely completed over Exploration Licence 6288, with follow up drilling now only occurring as required. Moolarben Coal Mines Pty Limited has identified further viable coal resources (primarily in the Murrumbidgee Valley) as a result of the drilling program and is actively preparing a further Environmental Assessment Report.

The assistance of the local landowners is acknowledged and we thank you for your support.



Environmental Program

Moolarben Coal Mines have continued to undertake baseline environmental monitoring. Air quality and surface waters are monitored on a monthly basis. Groundwater is also being monitored through existing bores and the installation of piezometers and test bores. Results of monitoring are presented to landowners on an ongoing basis. With the granting of approval for the Moolarben Coal Project the environmental monitoring program will be expanded to include specific consent conditions and fulfilment of requirements for statutory licences and permits.

Environmental Assessment Process

The Moolarben Coal Project has been the subject of an environmental assessment and public consultation requirements under Part 3A of the Environmental Planning and Assessment Act, 1979.

The proponent (Moolarben Coal Mines Pty Limited) lodged with the NSW Minister for Planning an Environmental Assessment Report in September 2006. The Environmental Assessment Report was exhibited during September and October 2006.

An Independent Hearing and Assessment Panel (IHAP) was formed by the Department of Planning for a hearing in early November 2006 to independently investigate the impacts of the Moolarben Coal Project on noise, groundwater and subsidence and report its findings to the Minister for Planning.

On 7 September 2007, the Minister for Planning made a determination to approve the Moolarben Coal Project subject to stringent conditions. A copy of the determination of approval can be found at <http://www.planning.nsw.gov.au/asp/ndetermination.asp>.

The conditions of approval covered all aspects of the development and included the following special conditions to safeguard the community and environment, these being:

- A Voluntary Planning Agreement with Mid-Western Regional Council to the value of \$4.55 million for community infrastructure and roads including the staged upgrade of the Ulan Road and Ulan-Wollar Road;

- The protection of amenity criteria for local residents in relation to noise and air quality including special measures for noise abatement at Ulan Public School;
- Shift changes to occur outside school bus hours;
- The commitment to where possible employ appropriately qualified persons residing in the local area, and provide traineeships for local youth (enquiries to Natasha Wilkinson at nwilkinson@frl.com.au or the address below);
- The protection and monitoring of "the Drip", the Goulburn River "Corner Gorge"; groundwater and surface waters;
- Greenhouse gas generation from the project is kept to a minimum;
- A 2:1 offset for the critically endangered Yellow Box, White Box, Blakely's Red Gum vegetation via dedication of lands to the National Park estate; and
- The conservation and enhancement of 1262ha of existing native vegetation.

Discussion with Landowners

In the coming weeks, representatives of Moolarben Coal Mines Pty Limited will discuss with landowners property acquisitions consistent with the commitments made at the commencement of the project, and will also discuss the consent conditions with landowners adjacent to the project.

Thanks & Appreciation

The staff and representatives of Moolarben Coal Mines Pty Limited wish to take this opportunity to thank the residents, landowners, Community Consultative Committee and community groups who participated in the environmental assessment process creating a stronger and more environmentally sustainable project.

It is anticipated that construction associated with the Moolarben Coal Project will commence mid 2008.

Moolarben Coal Mines Pty Limited looks forward to working with the local community.

For further information regarding the
Moolarben Coal Project
please contact:

Ian Callow



Moolarben Coal Mines Pty Limited

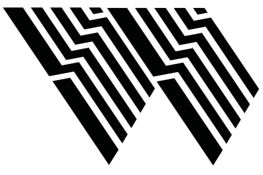
Level 14, 213 Miller Street, North Sydney NSW 2060

Ph: (02) 9922 3777 Fax: (02) 9923 2427

Mobile: 0419 622 155

Email: icallow@whitemining.com.au

Web: moolarbencoal.com.au



Community Newsletter No.5



June 2008

Background

The Moolarben coal exploration area is located approximately 40 kilometres north-east of the Mudgee township and immediately east of the village of Ulan.

On 6 September 2007, the Minister for Planning made a determination to approve Stage 1 of the Moolarben Coal Project subject to stringent conditions. These conditions are available on the MCM website at www.moolarbencoal.com.au.

Community Consultative Committee

The Approval of Stage 1 contained conditions requiring the establishment of a newly appointed Community Consultative Committee (CCC) for the construction and operation of the Moolarben Coal Project. Its purpose is to keep the community informed on matters discussed at meetings and provide a forum for open discussion between representatives of MCM, the community, Mid-Western Regional Council and other stakeholders. The CCC's scope covers approval conditions relating to the Moolarben Coal Projects' construction and operation, environmental performance and community relations.

The newly appointed committee consists of community representatives along with representatives from Mid Western Regional Council and MCM. The seven community representatives are Mesdames Julie Imrie, Helen Swords, Annette Riley, Victoria Tapp and Messrs Malcolm Swords, Ken Mayberry and David Stokes. Mr Noel O'Brien OAM has been appointed as the independent Chair person of the CCC.

Environmental Monitoring Program

MCM have continued to undertake baseline environmental monitoring and the conduct of further specialist studies. Air quality and surface waters are monitored on a monthly basis. Groundwater is also being monitored through existing bores, piezometers and test bores. Results of monitoring are presented to landowners on an ongoing basis.

With the granting of approval for the Moolarben Coal Project the environmental monitoring program has been expanded to include specific approval conditions and fulfilment of requirements for statutory licences and permits.

Environmental Management

MCM are in the process of preparing an Environmental Management Strategy (EMS), Environmental Management Plans (EMP's) and Monitoring Plans (MPs) in consultation with the Department of Planning and other relevant government agencies.

The EMS provides an overall framework for the environmental management of the construction and operation of the Moolarben Coal Project.

EMPs and MPs are being prepared for each of the key environmental areas including noise and vibration, air quality, surface and groundwater, heritage and waste. These EMPs and MPs contain specific objectives and criteria, monitoring procedures, safeguards and ameliorative actions to prevent and/or mitigate potential environmental impacts along with roles and responsibilities and reporting and review procedures. These EMPs and MPs have been prepared to ensure that specific approval conditions and requirements for statutory licences and permits are fulfilled.

The EMS, EMPs and MPs require approval of the Department of Planning before they can be adopted and implemented. The EMS and some EMPs and MPs have been lodged and are currently with the Department of Planning pending approval prior to the commencement of construction of the Moolarben Coal Project. Once the EMS, EMPs and MPs are approved they will be made available on the MCM website.

MCM are also currently in the process of finalising an Environment Protection Licence (EPL) application to the Department of Environment and Climate Change. An EPL licence contains conditions that relate to pollution prevention, monitoring and cleaner production through implementation of best practice.

Legal Challenges

The Court of Appeal judgement in the Ulan Coal Mine Limited's (UCML) appeal against its unsuccessful Supreme Court challenge to the validity of the Moolarben Coal Mine Pty Limited's mining leases is expected in the coming weeks. The Land & Environment Court challenge by UCML of the project approval has been heard and dismissed.

MCM has sought determination of compensation issues by the Mining Warden. Once this is finalised construction will commence.



Voluntary Planning Agreement

MCM and the Mid-Western Regional Council have finalised the Voluntary Planning Agreement (VPA) which will be beneficial to all residents of the shire regarding road improvements and community infrastructure.

Employment Enquires

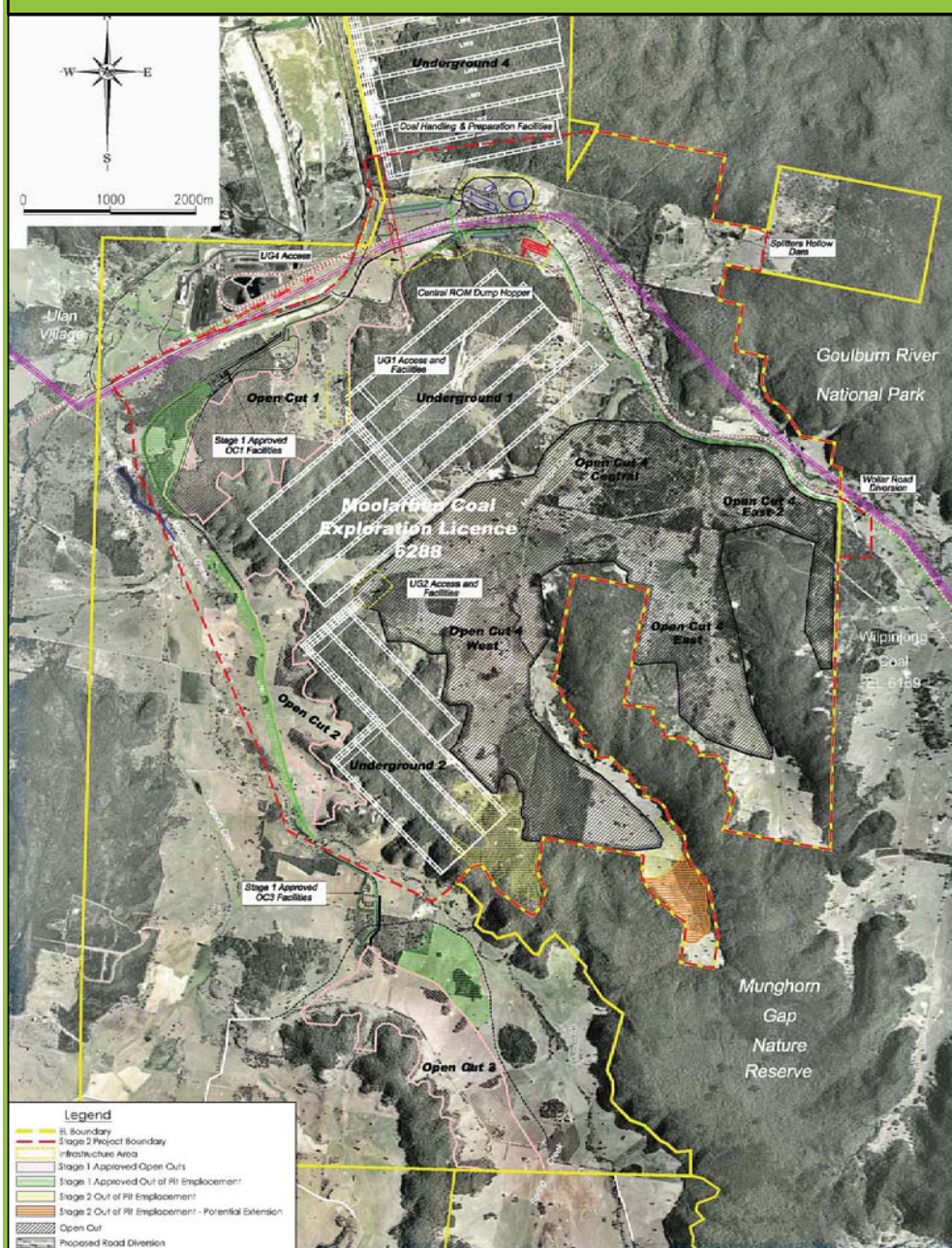
MCM looks forward to working with the local community on the construction and operation of the Moolarben Coal Project. MCM has recently advertised for local businesses interested in the Moolarben Coal Project to submit Expressions of Interest. All enquires should be directed to Natasha Wilkinson via the contact details provided at the end of this newsletter.

Stage 2 of the Moolarben Coal Project

Our last newsletter reported that exploration drilling over Exploration Lease 6288 identified a further viable coal resource, primarily within the Murrumbidgee Valley. This coal resource forms Stage 2 of the Moolarben Coal Project.

Stage 2 of the Moolarben Coal Project will comprise Open Cut 4 and Undergrounds 1 and 2 with supporting infrastructure.

Proposed general arrangement of Stage 2 of the Moolarben Coal Project.



Stage 2 of the Moolarben Coal Project will utilise Stage 1 coal handling, preparation and train loading facilities. Stage 2 is located generally east of the approved Stage 1 towards Wilpinjong Coal Mine.

On 1 May 2008 a Major Project Application and Preliminary Environmental Assessment was lodged by MCM with the Department of Planning for Stage 2.

Stage 2 of the MCP will be subject to environmental assessment and public consultation requirements under Part 3A of the Environmental Planning and Assessment Act, 1979. The Environmental Assessment Report and consultation will be undertaken in accordance with the Director General of Planning's Environmental Assessment requirements which are yet to be provided by the Department of Planning.

There are currently a number of environmental studies being undertaken on the Stage 2 area. The assistance of the local landowners to conduct the studies is acknowledged and we thank you for your support.

Community Information Session

Residents in the Ulan, Cooks Gap, Moolarben and Bobadeen areas and persons interested in the Moolarben Coal Project are invited to attend our fourth Community Information Session to be held at the Ulan Community House in July 2008.

A flyer will be distributed and public notice provided in the Mudgee Guardian notifying the details of the community information session.

Environmental Enquiry Number

MCM has established an environmental enquiries number in readiness for the commencement of construction. The enquiries number is **1800 556 484**. The purpose of this number is to provide the community with a readily accessible contact to the Moolarben Coal Mine for reporting of complaints or other enquiries.

For further information regarding the Moolarben Coal Project please refer to www.moolarbencoal.com.au or contact:

Environmental Enquiry Number: **1800 556 484**

Ian Callow (Project Manager): 0408 701 977

For employment related enquires please contact:

Natasha Wilkinson

Email: nwilkinson@frl.com.au

Fax: (07) 3211 7328

Interested contractors, fabricators, suppliers and business houses should register their interest by logging on to www.felixresources.com.au and then following the Community Awareness and Business Opportunities prompts and enter details under "Moolarben".

Moolarben Coal Mines Pty Limited
Level 14, 213 Miller Street,
NORTH SYDNEY NSW 2060



Community Newsletter No.6



July 2008

Background

On 6 September 2007, the Minister for Planning granted approval to Stage 1 of the Moolarben Coal Project subject to a raft of conditions. These conditions are available to be viewed on the Project's website at www.moolarbencoal.com.au.

Moolarben Coal Mines Pty Limited plans on commencing construction of the Moolarben Coal Project in the last quarter of 2008.

Community Consultative Committee

The inaugural meeting of the Community Consultative Committee (CCC) was held at Cooks Gap Rural Fire Service building on 26 June, 2008. The purpose of the CCC is to keep the community informed on matters discussed at meetings and provide a forum for open discussion between representatives of the mine, the community, Mid-Western Regional Council and other stakeholders.

Should you wish to discuss any issue associated with the project the names and contact details of CCC members are provided below:

- Noel O'Brien OAM (Independent Chairman)
Bus. (02) 6742 6696,
Mobile: 0409 449 741
- Cr Esme Martens Mid-Western Regional Council
(02) 6358 8237
- Julie Imrie
- Annette Riley
- Helen Swords
- Victoria Tapp

- Ken Mayberry
- David Stokes
- Malcolm Swords

Environmental and Community Relations Manager

Ms Edwina White has been appointed as the Moolarben Coal Project – Environment and Community Relations Manager. Edwina joins the team with over 12 years experience in the field of environmental management. Edwina can be contacted on 0427 780 786 or emailed via ewhite@frl.com.au.

Stage 2 of the Moolarben Coal Project

Our last newsletter reported that a Major Project Application and Preliminary Environmental Assessment had been lodged with the NSW Department of Planning for Stage 2 of the project. This application has since been withdrawn.

A fresh Major Project Application (08_0135) and Preliminary Environmental Assessment was lodged on 14 July 2008 with the NSW Department of Planning. Please refer to the plan at the back of this newsletter which shows the proposed general arrangement of Stage 2 for the Moolarben Coal Project.

Community Information Sessions

Residents in the Ulan, Cooks Gap, Moolarben and Bobadeen areas and persons interested in the Moolarben Coal Project are invited to attend our fourth Community Information Session which will be held at the Ulan Community House on the 23rd, 24th and 25th of July 2008 between the hours of 9.00am to 7.00pm.

The purpose of the Community Information Session is to provide the community and interested persons with information on Stage 2 of the Moolarben Coal Project.

Contact Information

Further information regarding the Moolarben Coal Project can be obtained by visiting www.moolarbencoal.com.au or contacting:

Environmental Enquiry Number: **1800 556 484**

Enquires relating to employment associated with the construction and operation of the project should be directed to:

Natasha Wilkinson Fax (07) 3211 7328
nwilkinson@frl.com.au

Interested contractors, fabricators, suppliers and business houses should register their interest by logging on to www.felixresources.com.au and then following the Community Awareness and Business Opportunities prompts and enter details under "Moolarben".

Ian Callow (Project Manager): 0408 701 977

Moolarben Coal Mines Pty Limited
Level 14, 213 Miller Street,
NORTH SYDNEY NSW 2060



