

Stratford Coal CCC Meeting

Presentation –
Company Report & Overview
of Activities

May 2023

Thomas Kirkwood
Senior Environment & Community Advisor

Table of Contents

1. Agenda Item 7a (Progress at the Mine)
2. Agenda Item 7b (Environmental Reporting)
3. Agenda Item 7c (Environmental Management Plans and Monitoring)
4. Agenda Item 7d (Mine Closure Planning update)
5. Agenda Item 7e (Community Complaints)
6. Agenda Item 7f (Community Programs)
7. Agenda Item 7G (Stratford Renewable Energy Hub – Update)

1. Progress at the Mine

Mining 1st Quarter 2023

	Total Waste (BCM)	ROM (T)	Product Coking (T)	Product Thermal (T)
Q1 2023	1,003,105	252,438	51,555	90,425

Note: Total Waste BCM includes mine rehandle

- Mining in Avon North continued during the quarter. Day and evening shift.
- Backfilling of Roseville West Pit continued in Q1 2023 with most waste taken to this pit.
- Minor BRN backfilling has continued during the quarter.

2. Environmental Reporting & Regulators

Management Area	Project	Status
Reporting	<ul style="list-style-type: none"> Stratford Mining Complex Annual Review 2022 Stratford Mining Complex Annual Biodiversity Report 2022 EPBC Approval Annual Compliance Report 	<ul style="list-style-type: none"> The Stratford Mining Complex 2022 Annual Review has been prepared and submitted to DPE and other regulators in March 2023. Once approved, the 2022 Annual Review will be distributed to the CCC members and will be made available on the Stratford Coal website The Stratford Mining Complex 2022 Annual Biodiversity Report has been completed. The Annual Biodiversity Report has been included in the 2022 Annual Review. The EPBC 2022 Annual Compliance Report has been prepared and submitted in March 2023. The report is available on the Stratford Coal website.
Regulator	<ul style="list-style-type: none"> Resources Regulator Rehabilitation Reform Environmental Management Plans 	<ul style="list-style-type: none"> Stratford prepared and submitted data for the first annual Forward Program and Annual Rehabilitation Report to the Resources Regulator. The forward Program and Annual Rehabilitation report will be available on the Stratford Coal website once generated by the Resources Regulator online portal. SCPL has completed revisions of the Stratford Environmental Management Plans to reflect the current status of the SMC. Approved plans have been made publicly available on the Stratford Coal Website.

3. Environmental Management Plans & Monitoring

- a) Air Quality Management
- b) Blast Management
- c) Noise Management
- d) Water Management
- e) Rehabilitation Management
- f) Biodiversity Management

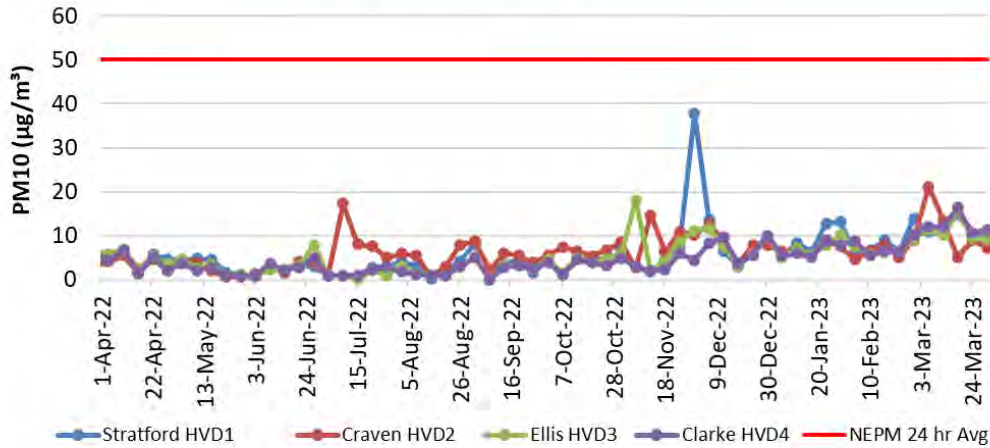


3a. Air Quality Management

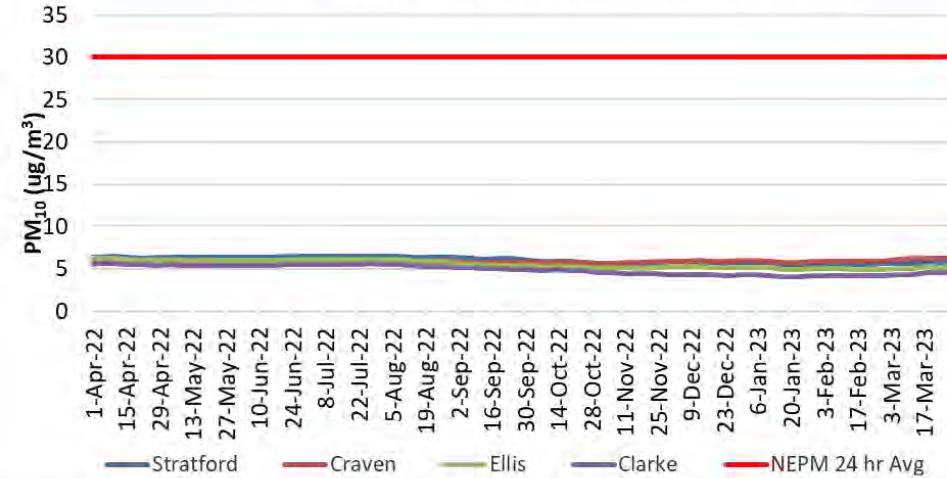
Management Area	Project	Status
Air Quality Monitoring	<ul style="list-style-type: none">Real-time air quality monitoring	<ul style="list-style-type: none">The real-time air quality TEOM monitors in Stratford and Craven villages continue to operate.General ambient PM10 dust levels have been very low throughout Summer/Autumn due to persistent rainfall.The real-time air quality management system analyses monitoring data from the TEOM units and records times when the air quality criteria is likely to be exceeded. The system will then provide alarms to staff to implement additional dust mitigation measures where required.No triggers have been received relating to mining operations.

3a. Air Quality Management

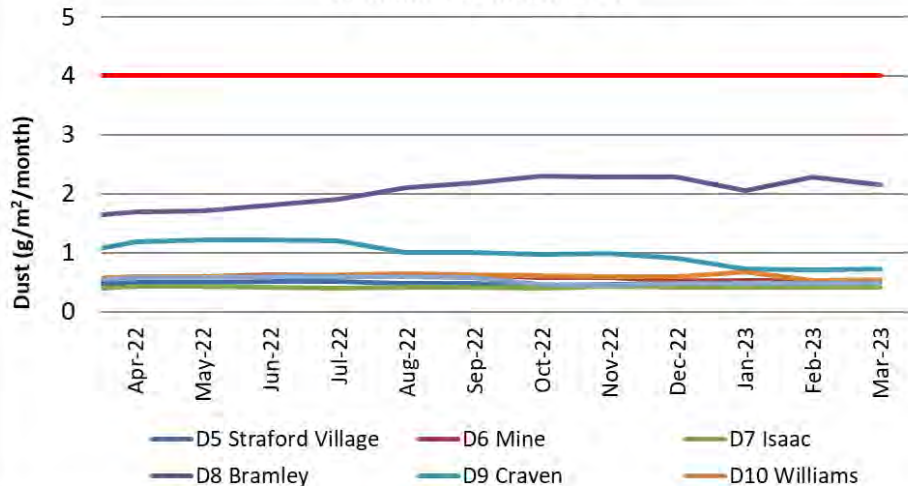
**Stratford HVAS Monitoring - Particulate Matter (PM10)
12 Months to March 2023**



**Stratford HVAS Monitoring (PM₁₀)
Annual Rolling Average - 12 Months to March 2023**



**Stratford Dust Deposition - Annual Rolling Average
12 Months to March 2023**



- Generally good overall air quality.
- All sites below DPIE limit. Air quality results lower during months with higher rainfall.
- Consistent air quality results with elevations seen in HVAS results on hot and windy days.
- HVAS results provide more reliable data compared to dust deposition results and should be referred to when interpreting dust emissions.

3b. Blast Management

Management Area	Project	Status
Blasting	<ul style="list-style-type: none">• Blast Monitoring• Blast Results• Blasting Preparations	<ul style="list-style-type: none">• Blasting activities continued in Avon North Pit.• For the current annual reporting period there have been no blast exceedances (<i>No more than 5% of total blasts allowed to exceed the 115dbl</i>).• No blasts exceeded the 5mm/s during the quarter. For the annual reporting period no blasts have exceed 5mm/s.• Blast notifications have continued.• Additional recipients have been added to the notification list on request.
Building Inspections	<ul style="list-style-type: none">• Baseline condition inspections	<ul style="list-style-type: none">• None requested.

3b. Blast Management

Date	Time	Isaac (B1) 7432		Ex-Judge (B2) 7441		Atkins (B6) 7434		Greenwood 7422		Clarke (B5) (Mine-owned) 7433 (previously 7377)		Overpressure Site Exceedance ¹	Ground Vibration Site Exceedance ¹	Monitored Blasts 2022 - 2023
Friday, 6 January 2023	12:47:24	0.27	83.6	<0.24	<114	<0.24	<114	<0.24	<114	<0.24	<114	0.00%	0.0%	28
Thursday, 12 January 2023	12:40:55	<0.24	<114	<0.24	<114	<0.24	<114	<0.24	<114	0.86	102.8	0.00%	0.0%	29
Friday, 20 January 2023	12:43:51	0.25	89.6	0.25	80.7	<0.24	102.2	<0.24	<114	1.08	106.6	0.00%	0.0%	30
Monday, 30 January 2023	12:36:41	0.25	83.6	<0.24	<114	<0.24	<114	<0.24	<114	0.64	107.5	0.00%	0.0%	31
Friday, 10 February 2023	10:08:34	<0.24	<114	<0.24	<114	<0.24	<114	<0.24	<114	0.53	105.3	0.00%	0.0%	32
Friday, 17 February 2023	12:40:41	<0.24	<114	<0.24	<114	<0.24	<114	<0.24	<114	1.11	106.1	0.00%	0.0%	33
Friday, 24 February 2023	12:37:02	<0.24	<114	<0.24	<114	<0.24	<114	<0.24	<114	0.32	104.8	0.00%	0.0%	34
Friday, 3 March 2023	12:30:06	0.25	83.6	<0.24	<114	<0.24	<114	<0.24	<114	0.52	107.0	0.00%	0.0%	35
Tuesday, 7 March 2023	12:48:44	0.37	87.1	<0.24	<114	0.28	107.0	0.29	86.0	1.11	114.5	0.00%	0.0%	36
Friday, 17 March 2023	12:35:15	0.32	97.5	<0.24	<114	<0.24	<114	<0.24	<114	0.94	113.6	0.00%	0.0%	37
Tuesday, 21 March 2023	12:38:23	<0.24	<114	<0.24	<114	<0.24	<114	<0.24	<114	0.27	99.3	0.00%	0.0%	38
Friday, 24 March 2023	12:40:07	0.29	97.5	<0.24	<114	<0.24	<114	0.24	86.0	0.66	106.6	0.00%	0.0%	39
Tuesday, 28 March 2023	12:40:02	<0.24	<114	<0.24	<114	<0.24	<114	<0.24	<114	0.39	106.3	0.00%	0.0%	40
Thursday, 30 March 2023	12:38:42	<0.24	<114	<0.24	<114	<0.24	<114	<0.24	<114	0.45	103.8	0.00%	0.0%	41

- *Note: Blast Compliance: No more than 5% of total blasts for annual monitoring period to exceed an overpressure of 115 dBL or ground vibration of 5 mm/s. No blast is to exceed an overpressure of 120 dBL or ground vibration of 10 mm/s.*
- *Note: Where no trigger is recorded the results indicate <0.22mm/s and <110.0dBL corresponding to the blast monitor settings.*
- *Note: Blast results for Clarke are extrapolated to the next nearest non-mined owned residence.*

3c. Noise Management

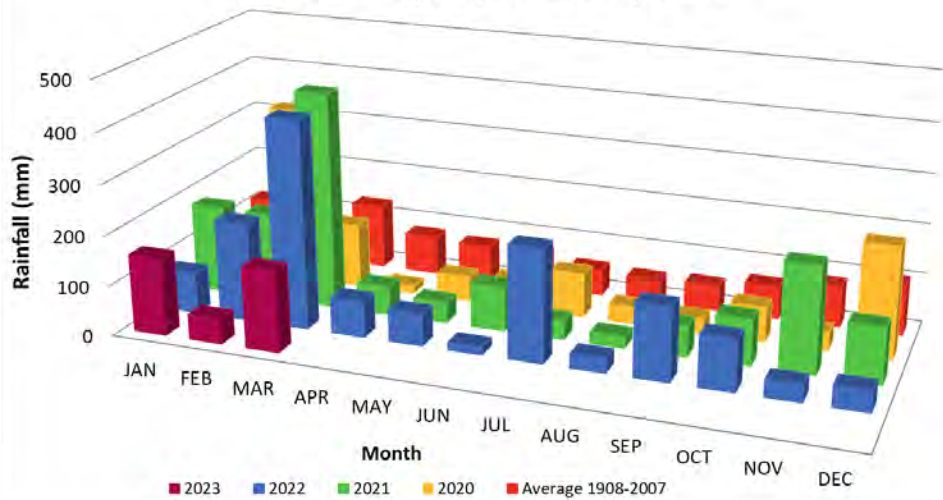
Management Area	Project	Status
Monitoring	<ul style="list-style-type: none"> Monthly Noise Survey Sound Power Monitoring 	<ul style="list-style-type: none"> Monthly attended noise monitoring rounds was undertaken during Q1 2023. No non-compliant results were recorded during the surveys. Reports will be made available on the Stratford Coal website. The next monitoring is scheduled in May 2023. Sound Power Level Noise Monitoring of the mobile plant fleet was undertaken in October 2022 and re-testing scheduled for May 2023.
Real-Time Noise	<ul style="list-style-type: none"> Real-Time Noise System Noise forecast reports 	<ul style="list-style-type: none"> Real-time noise monitors continue to operate near Stratford Village and Craven Village. The integrated real-time noise management system is operational. The system analyses monitoring data from the noise units, the weather station and the inversion towers and records times when either the noise criteria is likely to be exceeded or when noise enhancing weather conditions are present. The system will then provide alarms to staff to implement additional noise mitigation measures where required. Daily predicted noise and dust forecast reports are generated and are issued to the mining supervisors prior to each shift.

3d. Water Management

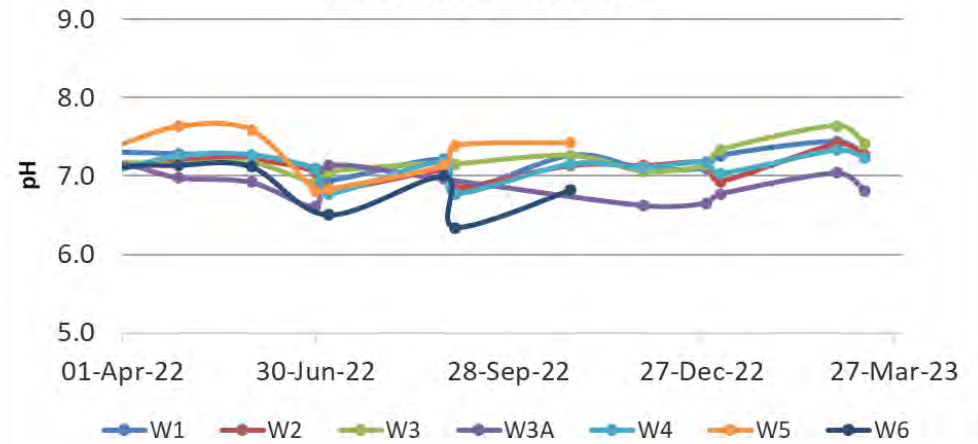
Management Area	Project	Status
Site Water Management	<ul style="list-style-type: none"> Annual Water Balance Review 	<ul style="list-style-type: none"> The 2022 Annual Site Water Balance has been prepared. A summary is included in the 2022 Annual Review and when approved be made available on the Stratford Coal website following approval.
Water Management Structures	<ul style="list-style-type: none"> Avon North and Stratford East Clean Water Diversions 	<ul style="list-style-type: none"> Ongoing inspections and monitoring has been completed in Q1 2023.
Surface Water Monitoring	<ul style="list-style-type: none"> Routine monitoring 	<ul style="list-style-type: none"> Routine water sampling continued. All results consistent with the SMC Environmental Assessment predictions. Above average rainfall was received during January and March 2023 with February 2023 being the driest February since 2000. Elevated Electrical Conductivity results at Surface Water Monitoring Point W5 were observed. Deemed to be due to semi stagnation of the pools of water adjacent to the monitoring point. High TSS (Total Suspended Solids) result observed at Monitoring Point W1 in September, elevated reading observed to be a result of rain runoff from a nearby private and publicly owned land.
Groundwater Monitoring	<ul style="list-style-type: none"> Routine monitoring 	<ul style="list-style-type: none"> Routine groundwater sampling continued. All results consistent with the SMC Environmental Assessment predictions.

3d. Water Management

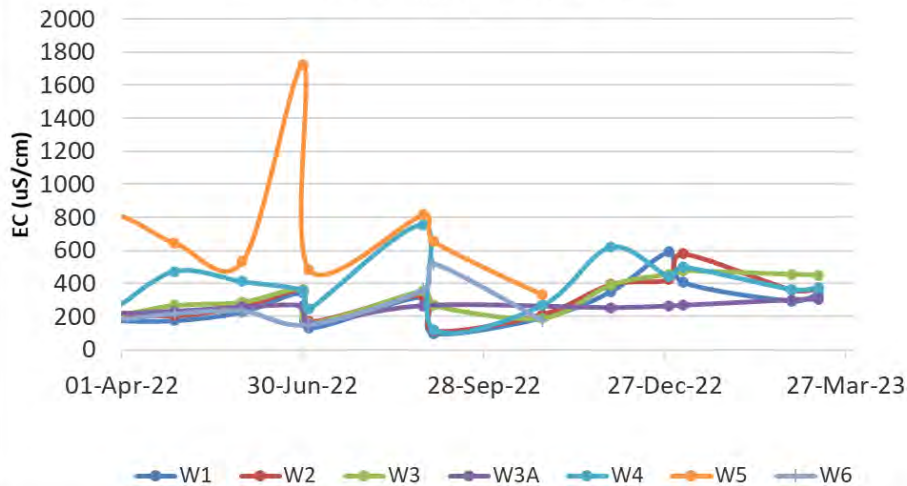
Stratford Mining Complex - Monthly Rainfall



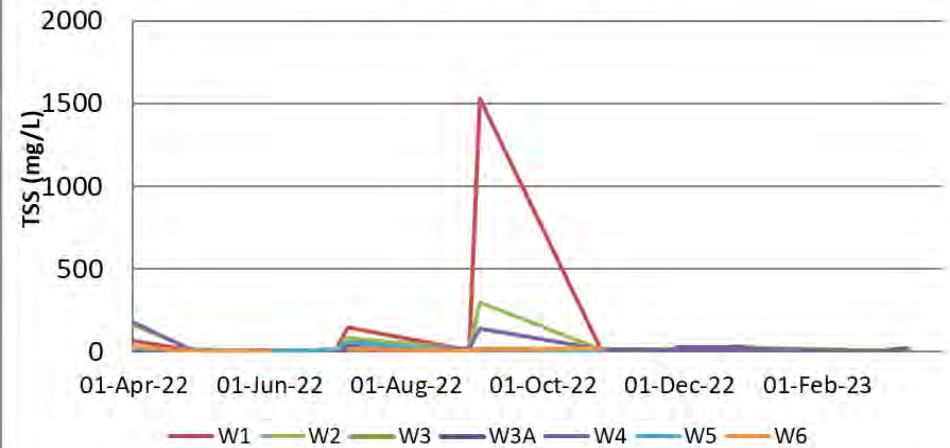
pH - Avon River & Avondale Creek
12 Months to March 2023



EC - Avon River & Avondale Creek
12 Months to March 2023



Surface Water Monitoring -TSS
Avon River/Avondale Creek



3e. Rehabilitation and Biodiversity Management

Management Area	Project	Status
Monitoring	<ul style="list-style-type: none"> Vegetation Monitoring - Ecosystem Function Analysis 	<ul style="list-style-type: none"> Rehabilitation monitoring incorporating landscape function analysis and vegetation dynamics was completed in April 2023. The results will be included in the next 2023 Annual Review.
Biodiversity Offset Area	<ul style="list-style-type: none"> Revegetation Planning 	<ul style="list-style-type: none"> Following postponement due to wet ground conditions, the 2022 Q2 planting program recommenced in April 2023. 18,880 Native Trees and Shrubs are currently being planted in offset properties near Woods Rd and Stratford Village. Additional plantings have been undertaken along Wenham Cox Rd.



Plate 1, Plants in storage to be planted into Stratford Village planting area.



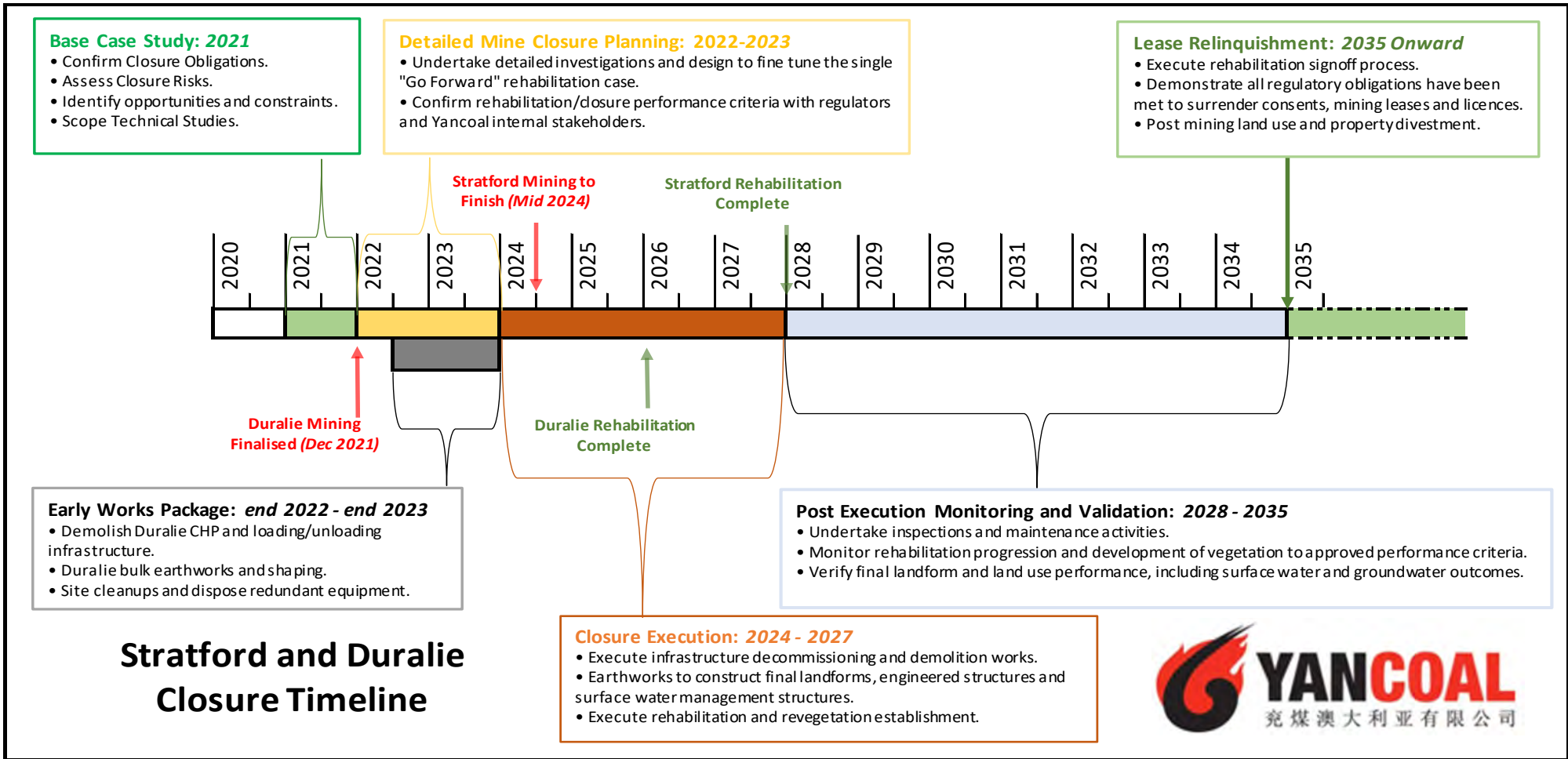
Plate 2, Rip lines installed in preparation for planting at Wenham Cox Rd.

4. Mine Closure – General Information

Mine Closure Progress

- Condition 5, Schedule 2 of the SMC's Development Consent (SSD_4966) authorises mining operations to be carried at the SMC until 31 December 2025.
- Mining operations at Stratford are currently planned to be completed in approximately mid-2024 at which time the site will transition to closure.
- SSD_4966 and the Mining Leases continue to be in force until SCPL rehabilitates the site in accordance with the conditions of the Approval and MLs to the satisfaction of DPIE and the Resources Regulator.
- As the SMC progresses towards the end of its approved mine life, operations and activities at the SMC will progressively change to reflect this.
- Ongoing bulk earthworks and rehabilitation activities are planned for approx. 2-3 years following the completion of coal mining.

4. Detailed Mine Closure Planning – Closure Timeline



4. Infrastructure Decom and Demo

Early decommissioning and demolition works have commenced at Stratford:

- Duralie coal unloader and conveyors scheduled for demo completed in March 2023.
- General scrap clean up during April 2023



Images: Stratford CHPP

4. Mine Closure Planning

Note: *Refer to Stratford Rehabilitation Management Plan Appendix 1 Mine Closure Plan and Schedule.
*Further detail on mine closure planning progress is included in the Annual Review 2022.

Management Area	Project	Status
Mine Closure Planning General	<ul style="list-style-type: none"> Detailed Mine Closure Planning Program 	<ul style="list-style-type: none"> SCPL has updated the Mine Closure Planning Program in the Stratford Mining Complex Rehabilitation Management Plan (RMP). The Mine Closure Planning Program is intended to provide a strategy and a description of all the works required to develop the Detailed Mine Closure Plan. Closure planning will continue throughout 2023.
Rehabilitation Management Plan	<ul style="list-style-type: none"> Rehabilitation Management Plan, including Closure Plan 	<ul style="list-style-type: none"> The RMP, including the updated closure planning program was submitted to the Resources Regulator in July 2022. The RMP was provided for consultation with the CCC. The RMP is available on the Stratford Coal website
Closure Risk Assessment	<ul style="list-style-type: none"> Mine Closure Risk Assessment review 	<ul style="list-style-type: none"> A review of the Stratford Coal Mine Rehabilitation and Mine Closure Risk Assessment was undertaken in August 2021. The outcomes of the risk assessment have been used to develop an updated actions register which forms the basis of the Mine Closure Planning Program. This will be updated again in early-mid 2023 to ensure risks have been considered in the planning process. A post closure public safety risk assessment has been undertaken.
Environmental Management Plans	<ul style="list-style-type: none"> EMP reviews for closure stage 	<ul style="list-style-type: none"> EMPs will be progressively reviewed and updated to reflect the current stage of operations and ongoing rehabilitation and mine closure requirements. EMPs will identify post-closure environmental monitoring and maintenance requirements. Post-closure monitoring and maintenance activities will continue until the specific completion criteria has been met and confirmation has been received from the relevant authority.
Stakeholder and Community	<ul style="list-style-type: none"> Stakeholder engagement strategy 	<ul style="list-style-type: none"> Communications with the CCC regarding mine closure planning is ongoing. This presentation will continue to be updated to provide relevant information through the CCC forum. A Closure Stakeholder Engagement Strategy has been prepared. The Closure Socio-economic impact assessment has been finalised and a presentation for the CCC prepared.



4. Mine Closure Planning

Management Area	Project	Status
Final land use	<ul style="list-style-type: none"> Potential final land-use planning 	<ul style="list-style-type: none"> The target post-mining land uses for previously disturbed mining land are defined in the RMP and shown in Plan 1 of the RMP. SCPL is currently preparing a post-mining land use strategy and property divestment strategy for all company owned land.
Rehabilitated Landforms	<ul style="list-style-type: none"> Landform design and stability 	<ul style="list-style-type: none"> SCPL have prepared the detailed final landform designs for the site. These are now presented in the RMP. Further refinement based on the outcomes of the surface water and groundwater modelling will be required. Preparation of a geotechnical assessment and specifications for the final void design have continued to ensure the long-term void is safe and stable.
Water Management	<ul style="list-style-type: none"> Site water Balance 	<ul style="list-style-type: none"> SCPL will review the site water balance and final landform drainage design to ensure comparable drainage density to local natural landforms.
Final Voids	<ul style="list-style-type: none"> Water management and final void water balance 	<ul style="list-style-type: none"> Void closure criteria have been prepared and are detailed in the RMP. Review of the final voids site water balance models is currently being finalised to ensure the balance incorporates the updated final landform design, surface water inflows and outflows and recently updated groundwater modelling. This work is ongoing and will form an important part of the closure program.
	<ul style="list-style-type: none"> Groundwater Model 	<ul style="list-style-type: none"> Post-mining groundwater model verification has been finalised and the data is being used in the final voids water balance. Additional work may be required to inform the closure project at a later time.
Rehabilitation Resources	<ul style="list-style-type: none"> Topsoil Resources 	<ul style="list-style-type: none"> A topsoil stockpile update was undertaken in July 2022 and confirmed adequate topsoil is available for rehabilitation. The rehabilitation resources register will be updated throughout mining operations and closure.
Biodiversity Offset	<ul style="list-style-type: none"> Biodiversity Offset Integration 	<ul style="list-style-type: none"> Integration of the biodiversity offset strategy is a key component of the rehabilitated final land form and land use. SCPL will undertake an assessment of the SMC Biodiversity Offset Areas and Biodiversity Enhancement Areas to confirm completion of the Biodiversity Offset Strategy completion criteria and integration with the SMC rehabilitation.

5. Community Complaints - Summary

- No complaints to report in Q1 2023

6. Community Programs

Management Area	Project	Status
Support Programs	Stratford Coal Community Support Program	<ul style="list-style-type: none"> The 2023 Stratford Coal Community Support Program presentation night was held on Tuesday 28 March 2023 at the Avon Valley Inn. Stratford Coal has granted over \$93,300 in funding to support 22 local community organisations across Gloucester and Stroud region, aiming to make a positive difference to the community. Applications for the 2024 Community Support Program will re-open in September 2023.
	Stratford Coal Education Support Fund	<ul style="list-style-type: none"> The Stratford Coal Education Support Fund (ESF) applications closed on 31 January 2023. The 2023 ESF has been finalised and the grants confirmed at the annual committee meeting in March 2023. In 2023, a total of \$36,500 has been granted to students and local businesses supporting 11 x Tertiary courses, 4 x TAFE courses and 2 x Apprenticeships.



7. Stratford Renewable Energy Hub (SREH) - Update

- Yancoal is continuing to investigate the potential for a renewable energy hub at the Stratford mine site
- Ongoing activities include:
 - Detailed Feasibility Study (FS)
 - Baseline environmental studies to inform government approvals
 - Stakeholder engagement and distribution of fact sheets
- New activities commencing this month:
 - Investigation of ground conditions including drilling
- Website and contact information:
 - www.stratfordcoal.com.au/page/SREH/
 - SREH.feedback@Yancoal.com.au

OUR PATH TO TRANSITION
Powered in Australian futures

STRATFORD RENEWABLE ENERGY HUB

Fact Sheet
April 2023

Yancoal Australia is currently investigating alternative opportunities to create a sustainable long-term business. The Stratford Mining Complex is an ideal location to establish a renewable energy hub after mining has ended, which could generate investment and other benefits to the Gloucester Valley.

- **WHERE IS THE PROJECT LOCATED?**
The proposed Stratford Renewable Energy Hub (SREH) is located in the Gloucester Valley, 95 kilometres north of Newcastle.
The SREH would be developed on and adjacent to the Stratford Mining Complex, where coal mining will end in 2024.
- **WHAT DOES THE PROJECT INCLUDE?**
The SREH will initially include:
 - **Pumped Hydro Energy Storage** 3600MW hrs over a 12 hour cycle
 - **Solar Farm Facility** 330MWThe SREH will require a connection to the transmission network. Yancoal is currently working with transmission network service providers to identify connection options and network upgrades.
- **WHAT IS YANCOAL'S PLAN FOR ENGAGEMENT?**
Yancoal has been engaging with a range of stakeholders on SREH and welcomes the feedback received to date.
Yancoal will continue to consult with the community, Council, Government agencies and other key stakeholders as the Project progresses.
- **WHY IS PUMPED HYDRO CRITICAL TO THE TRANSITION TO RENEWABLE ENERGY?**
The Australian Energy Market Operator (AEMO) has identified that the closure of coal-fired power stations across the country is likely to lead to considerable electricity shortfalls after 2025.
To address this electricity shortfall and supplement the growing but intermittent renewable energy supply, long duration energy storage is needed.
Pumped Hydro Energy Storage has been endorsed by Federal and State Governments as one of the most effective and reliable forms of long duration energy storage, because it delivers dispatchable power at times of high demand and low supply.
The NSW Government has also set a target of building an additional 2 Giga Watts (GW) of long duration energy storage by 2030. SREH would represent 15% of this target.

If developed within the anticipated timeframe, SREH could play a key role in supplying electricity to offset future energy shortages identified by AEMO and the NSW Government.

OUR PATH TO TRANSITION
Powered in Australian futures

ENERGY HUB

Fact Sheet
December 2022

Opportunities, including investment in other energy related and Mining Complex has been identified as an ideal location for a post-mining land use has the potential to provide:

- **CURRENT STATUS**
Yancoal has completed a Pre-Feasibility Study and commenced the following:
 - Feasibility Study;
 - baseline environmental studies; and
 - stakeholder engagement.
- **STRATEGIC CONTEXT**
Pumped Hydro Energy Storage has been endorsed by Government as one of the most effective and reliable forms of long duration energy storage which will be required to balance the growing supply of intermittent renewable energy sources following the staged closure of coal-fired power stations across the country.
The SREH would help NSW meet its targets to replace 315W of coal-fired electricity by 2030 and build 20W of new long duration storage by 2030.

AN IDEAL LOCATION
The Stratford Mining Complex's proximity to existing electricity transmission infrastructure and demand centres, its expansive landholding and the topography make it an ideal location for a renewable energy hub.

YANCOAL