

Stratford Coal CCC Meeting

Presentation –
Company Report &
Overview of Activities

May 2022

Thomas Kirkwood
Senior Environment & Community Advisor

Table of Contents

1. Agenda Item 7a (Progress at the Mine)
2. Agenda Item 7b (Environmental Reporting)
3. Agenda Item 7c (Environmental Management Plans and Monitoring)
4. Agenda Item 7d (Community Complaints)
5. Agenda Item 7e (Community Programs)

1. Progress at the Mine

Mining 1st Quarter 2022

	Total Waste (BCM)	ROM (T)	Product Coking (T)	Product Thermal (T)
Q1 2022	1,150,480	134,843	52,184	115,248

- Mining in Avon North continued during the quarter. Day and evening shift.
- Mining in Stratford East Pit continued during the quarter. Day and evening shift.
- BRN backfilling has continued during the quarter.
- BRN to Roseville Haul road construction completed.



2. Environmental Reporting & Regulators

Management Area	Project	Status
Reporting	<ul style="list-style-type: none"> Stratford Mining Complex Annual Review 2021 Stratford Mining Complex Annual Biodiversity 2021 EPBC Approval Annual Compliance Report 	<ul style="list-style-type: none"> The Stratford Mining Complex 2021 Annual Review has been prepared and submitted to DPIE and other regulators in March 2022. The Annual Review 2021 will be distributed to the CCC members and will be made available on the Stratford Coal website. The Stratford Mining Complex 2021 Annual Biodiversity has been completed. The Annual Biodiversity Report 2021 will be included in the 2021 Annual Review. The EPBC 2021 Annual Compliance Report has been prepared and submitted in March 2022. The report is available on the Stratford Coal website.
Regulator	<ul style="list-style-type: none"> Resources Regulator Rehabilitation Reform MOP & Rehabilitation Management Plan Environmental Management Plans 	<ul style="list-style-type: none"> The Resource Regulator has released the rehabilitation reform which will require mine sites to comply with new planning and reporting standards. Stratford is required to prepare a new Rehabilitation Management Plan and Mine Closure Plan prior to 2 August 2022. The Stratford Mining Operations & Rehabilitation Management Plan reflects the proposed mining and rehabilitation activities until December 2023. The MOP is available on the Stratford Coal website. This will be superseded by the new RMP in 2022. SCPL has prepared revisions of the Stratford Environmental Management Plans to reflect the current status of the SMC. The revised plans have been progressively submitted to DPIE for approval and will be made publicly available once approved.

3. Environmental Management Plans & Monitoring

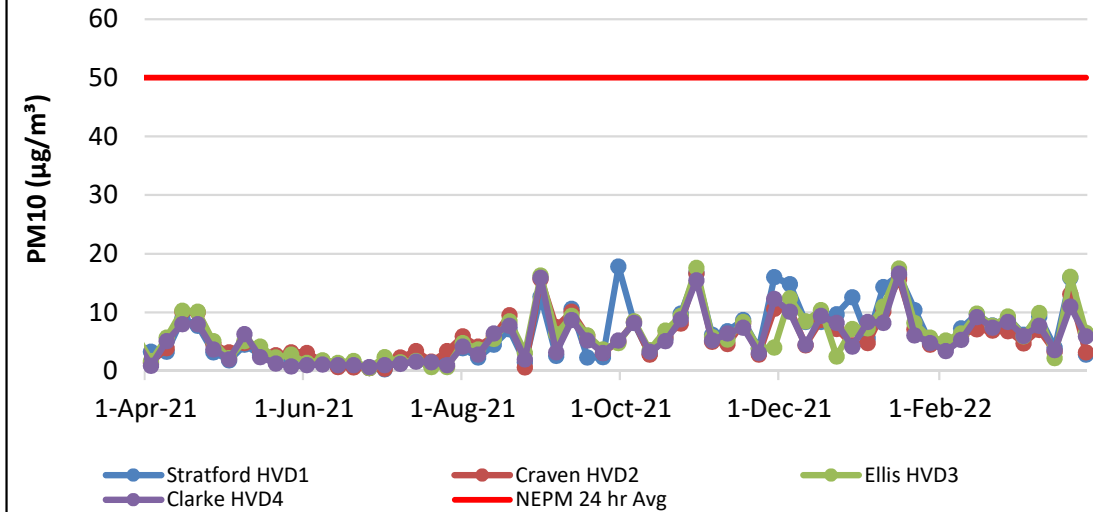
- a) Air Quality Management
- b) Blast Management
- c) Noise Management
- d) Water Management
- e) Rehabilitation Management
- f) Biodiversity Management
- g) Mine Closure Planning

3a. Air Quality Management

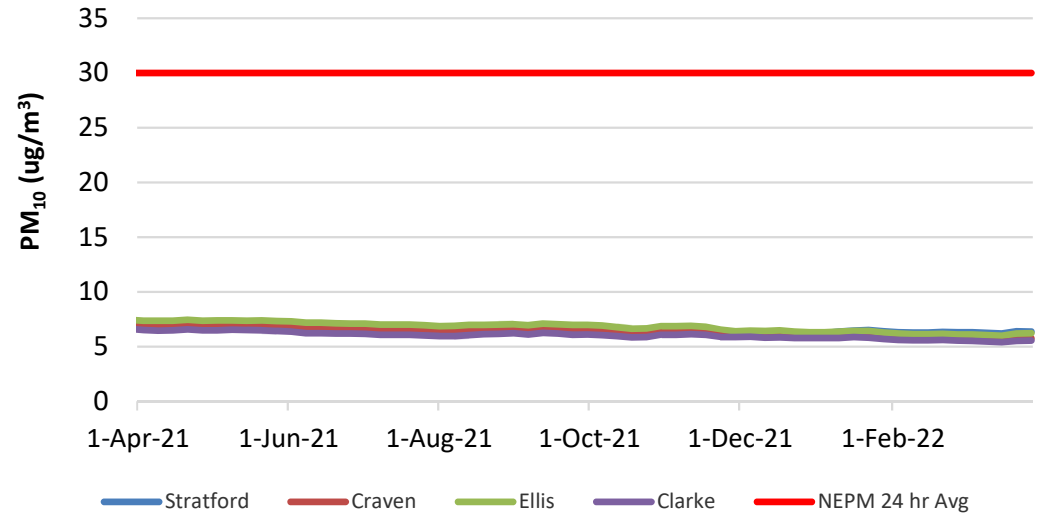
Management Area	Project	Status
Air quality monitoring	<ul style="list-style-type: none">Real-time air quality monitoring	<ul style="list-style-type: none">The real-time air quality TEOM monitors in Stratford and Craven villages continue to operate.General ambient PM10 dust levels have been very low throughout Summer/Autumn due to increased rainfall.The real-time air quality management system analyses monitoring data from the TEOM units and records times when the air quality criteria is likely to be exceeded. The system will then provide alarms to staff to implement additional dust mitigation measures where required.No triggers have been received relating to mining operations.

3a. Air Quality Management

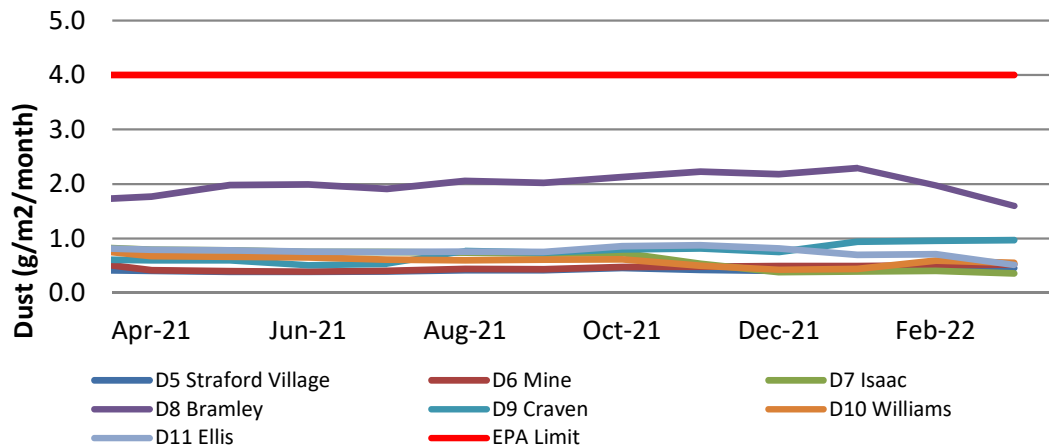
**Stratford HVAS Monitoring - Particulate Matter (PM10)
12 Months to March 2022**



**Stratford HVAS Monitoring (PM₁₀)
Annual Rolling Average - 12 Months to March 2022**



**Stratford Dust Deposition - Annual Rolling Average
12 Months to March 2022**



- Generally good overall air quality.
- All sites below DPIE limit. Air quality results lower during months with higher rainfall.
- Consistent air quality results with minor elevation seen in HVAS results on hot and windy days.
- HVAS results provide more reliable data compared to dust deposition results and should be referred to when interpreting dust emissions.

3b. Blast Management

Management Area	Project	Status
Blasting	<ul style="list-style-type: none"> Blast Monitoring Blast Results 	<ul style="list-style-type: none"> Blasting activities continued in Avon North and Stratford East open cuts. For the current annual reporting period 1.92% of blasts (1 blast on 15/7/2021) has exceeded 115dB(L) (<i>No more than 5% of total blasts allowed to exceed the 115dbl</i>). No blasts exceeded the 5mm/s during the quarter. For the annual reporting period no blasts have exceed 5mm/s.
	<ul style="list-style-type: none"> Blasting Preparations 	<ul style="list-style-type: none"> Blast notifications have continued. Additional recipients have been added to the notification list on request. Blasting in Stratford East and Avon North currently.
Building Inspections	<ul style="list-style-type: none"> Baseline condition inspections 	<ul style="list-style-type: none"> None requested



3b. Blast Management

Location	Date	Time	Isaac (B1) 7432		Ex-Judge (B2) 7441		Atkins (B6) 7434		Greenwood 7422		Clarke (B5) (Mine-owned) 7433 (previously 7377)		Overpressure Site Exceedance ¹	Ground Vibration Site Exceedance ¹	Monitored Blasts ¹
			24hr	mm/s	dBL	mm/s	dBL	mm/s	dBL	mm/s	dBL	mm/s	dBL	%	
Stratford East	Thursday, 13 January 2022	12:41:00	0.23	88.3	<0.24	<114	<0.24	<114	0.64	110.2	0.48	79.4	2.56%	0.0%	39
Avon North	Monday, 24 January 2022	12:43:00	0.34	82.3	0.34	83.0	0.39	97.2	<0.24	<114	1.46	118.6	2.50%	0.0%	40
Avon North	Thursday, 27 January 2022	12:36:00	<0.24	<114	<0.24	<114	<0.24	<114	<0.24	<114	0.65	100.6	2.44%	0.0%	41
Avon North	Thursday, 3 February 2022	13:34:00	<0.24	<114	0.29	89.0	0.31	109.7	<0.24	<114	1.25	117.2	2.38%	0.0%	42
Avon North	Wednesday, 9 February 2022	12:43:00	0.31	82.3	0.27	89.0	0.34	95.3	<0.24	<114	0.84	110.4	2.33%	0.0%	43
Stratford East	Friday, 18 February 2022	12:26:00	0.34	82.3	0.30	83.0	<0.24	<114	1.32	106.3	0.51	82.9	2.27%	0.0%	44
Avon North	Thursday, 3 March 2022	12:20:00	0.37	76.3	0.45	83.0	0.31	98.8	<0.24	<114	1.95	112.1	2.22%	0.0%	45
Avon North	Friday, 11 March 2022	12:41:00	<0.24	<114	<0.24	<114	<0.24	<114	<0.24	<114	0.59	101.3	2.17%	0.0%	46
Avon North	Thursday, 17 March 2022	11:10:00	0.40	82.3	0.38	86.5	0.37	86.8	<0.24	<114	2.18	109.3	2.13%	0.0%	47
Avon North	Friday, 18 March 2022	12:38:00	<0.24	<114	<0.24	<114	<0.24	<114	<0.24	<114	0.59	110.5	2.08%	0.0%	48
Stratford East	Thursday, 24 March 2022	12:34:00	0.22	82.3	0.24	83.0	<0.24	<114	0.90	101.3	<0.24	<114	2.04%	0.0%	49
Avon North	Monday, 4 April 2022	12:38:00	<0.24	<114	0.26	86.5	0.29	86.8	<0.24	<114	0.82	107.8	2.00%	0.0%	50
Stratford East	Wednesday, 6 April 2022	12:40:00	<0.24	<114	0.25	83.0	<0.24	<114	0.55	96.5	0.37	79.4	1.96%	0.0%	51
Avon North	Thursday, 14 April 2022	11:26:00	0.26	82.3	0.38	83.0	0.27	91.2	<0.24	<114	0.98	113.8	1.92%	0.0%	52

- Note: Blast Compliance: No more than 5% of total blasts for annual monitoring period to exceed an overpressure of 115 dBL or ground vibration of 5 mm/s. No blast is to exceed an overpressure of 120 dBL or ground vibration of 10 mm/s.
- Note: Where no trigger is recorded the results indicate <0.22mm/s and <110.0dBL corresponding to the blast monitor settings.
- Note: Blast results for Clarke are extrapolated to the next nearest non-mined owned residence.

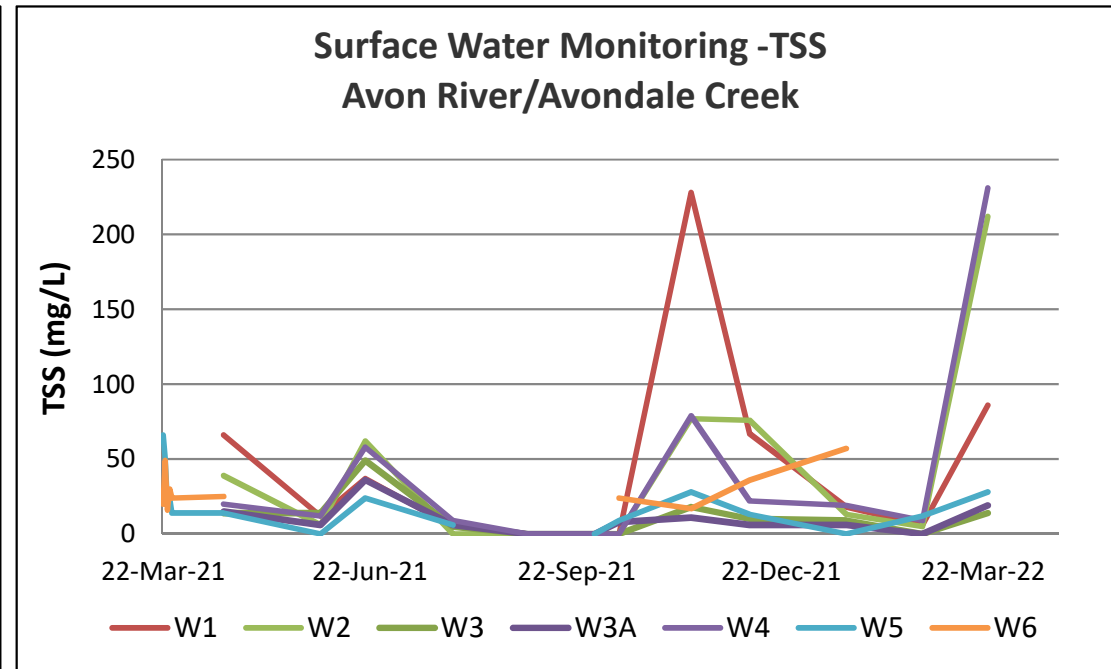
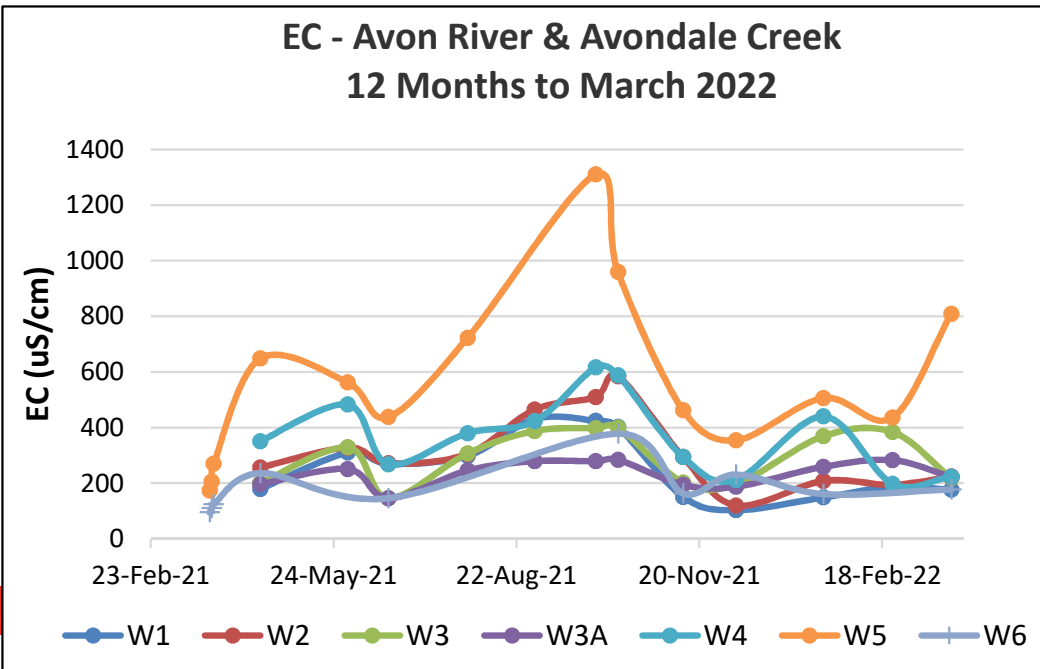
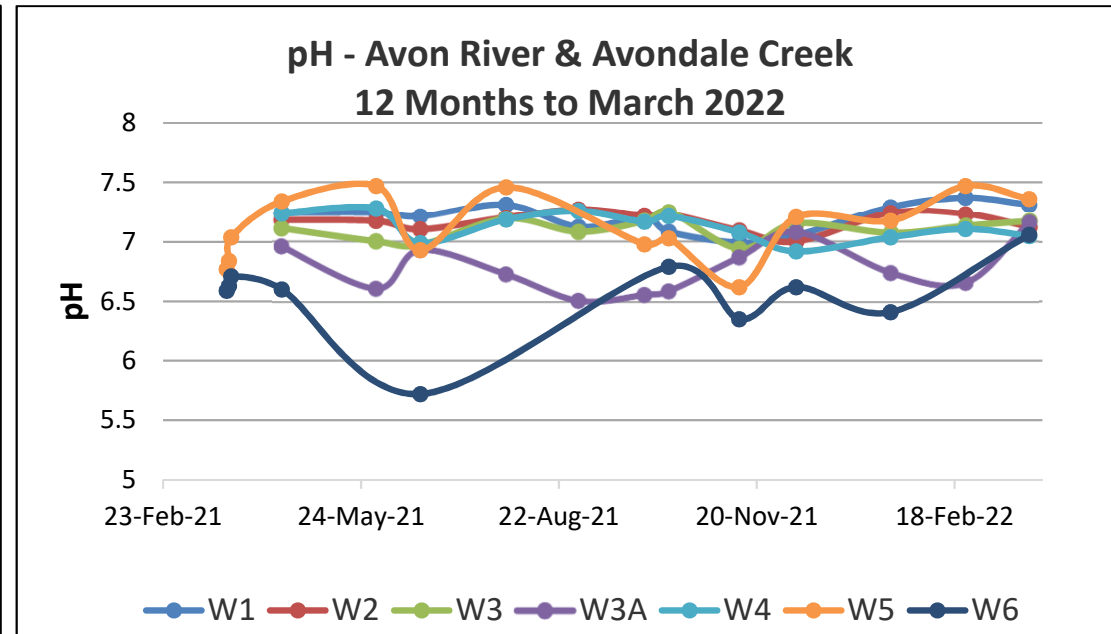
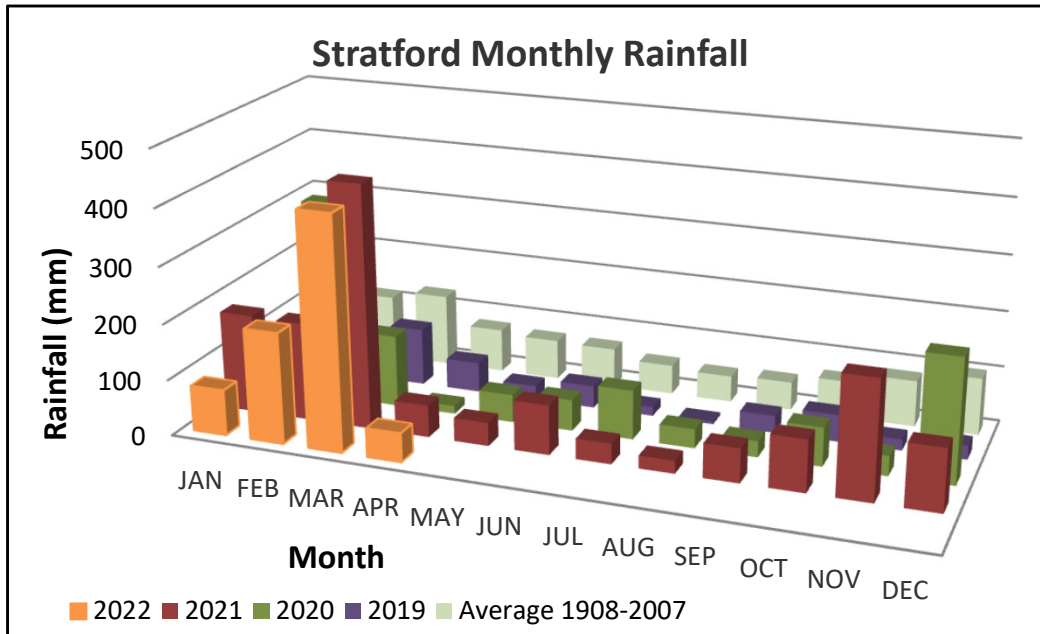
3c. Noise Management

Management Area	Project	Status
Monitoring	<ul style="list-style-type: none">Monthly Noise Survey	<ul style="list-style-type: none">Monthly attended noise monitoring was undertaken during Q1 2022.No non-compliant results were recorded during the surveys. Reports have been made available on the Stratford Coal website.The next monitoring is scheduled in May 2022
Real-Time Noise	<ul style="list-style-type: none">Real-Time Noise SystemNoise forecast reports.	<ul style="list-style-type: none">Real-time noise monitors continue to operate near Stratford village and Craven Village.The integrated real-time noise management system is operational. The system analyses monitoring data from the noise units, the weather station and the inversion towers and records times when either the noise criteria is likely to be exceeded or when noise enhancing weather conditions are present. The system will then provide alarms to staff to implement additional noise mitigation measures where required.Daily predicted noise and dust forecast reports are generated and are issued to the mining supervisors prior to each shift.

3d. Water Management

Management Area	Project	Status
Site Water Management	<ul style="list-style-type: none"> Annual water balance review. 	<ul style="list-style-type: none"> The 2021 annual site water balance has been prepared. A summary is included in the 2021 Annual Review and will be available on the Stratford Coal website.
Water Management Structures	<ul style="list-style-type: none"> Avondale Creek haul road culvert crossing 	<ul style="list-style-type: none"> Construction was completed in Q1 2022 for the new haul road linking BRN and Roseville West pits including a culvert crossing of Avondale Creek.
Surface Water Monitoring	<ul style="list-style-type: none"> Routine monitoring 	<ul style="list-style-type: none"> Routine water sampling continued. All results consistent with the SCM Environmental Assessment predictions. Above average rainfall was received during Q1 2022. Elevated electrical conductivity results were observed at surface water monitoring point 5. Elevated levels deemed to be due to semi stagnation of the pools of water adjacent to the monitoring point.
	<ul style="list-style-type: none"> Macro-invertebrates 	<ul style="list-style-type: none"> Macro-invertebrate monitoring was undertaken in September 2021 and continues to show no identified impacts from the Stratford mining operations on aquatic ecosystems.
Groundwater Monitoring	<ul style="list-style-type: none"> Routine monitoring 	<ul style="list-style-type: none"> Routine groundwater sampling continued. All results consistent with the SCM Environmental Assessment predictions.

3d. Water Management



3e. Rehabilitation Management

Management Area	Project	Status
Rehabilitated Waste Emplacements	<ul style="list-style-type: none"> BRN backfilling and bulk-shaping Rehabilitation Maintenance 	<ul style="list-style-type: none"> Mining in the BRN pit was finalised in June 2021 and backfilling has continued to progress in Q1 2022. Bulk shaping with a D11 dozer is progressing to achieve the final landform design. Manual weed removal rescheduled to Q2 2022.
	<ul style="list-style-type: none"> Native rehabilitation infill planting. 	<ul style="list-style-type: none"> Due to above average persistent rainfall, infill planting with tubestock in existing rehabilitation areas has been postponed until Spring 2022. Planting areas will include BRN Rehabilitation area, Roseville West Rehabilitation area and Stratford Main Pit Rehabilitation area.
Monitoring	<ul style="list-style-type: none"> Vegetation Monitoring - Ecosystem Function Analysis 	<ul style="list-style-type: none"> Rehabilitation monitoring incorporating landscape function analysis and vegetation dynamics was completed in April 2022. The results will be included in the next Annual Review.



3e. Biodiversity Management

Management Area	Project	Status
Biodiversity Offset Area	<ul style="list-style-type: none"> Revegetation Planning Revegetation works 	<ul style="list-style-type: none"> Due to above average persistent rainfall, Q2 planting program has been postponed until Spring 2022. Wet ground conditions have prevented adequate ground preparations. Planting areas will include offset properties near Woods Rd and Stratford Village. Additional plantings will be undertaken along Wenham Cox Rd, BRN Rehabilitation area, Roseville West Rehabilitation area and Stratford Main Pit Rehabilitation area. Tubestock is currently being held by the nurseries over winter. Approximately 21,291 trees over 88.77 hectares will be planted.



3e. Biodiversity Management

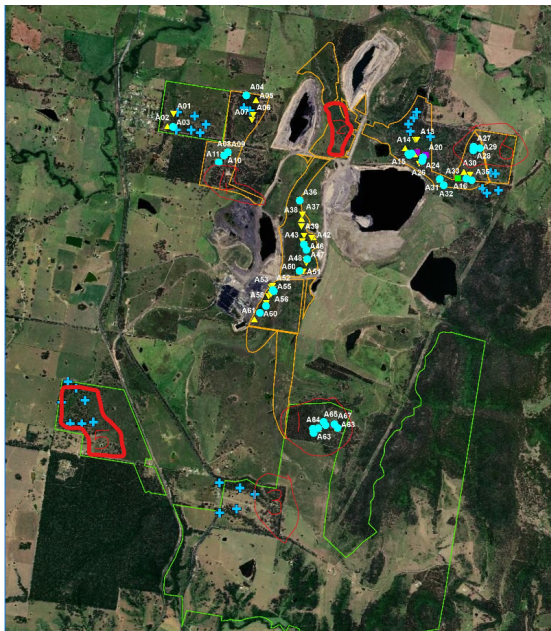
Management Area	Project	Status
Weed Control	<ul style="list-style-type: none"> Weed spraying program 	<ul style="list-style-type: none"> Weed spraying has continued in the Stratford Biodiversity Area and Stratford Mining Lease areas throughout Q1 targeting Blackberry, Crofton weed, Tobacco bush, Privet and Lantana. Weed spraying will continue through autumn while conditions are favourable.
Pest Control	<ul style="list-style-type: none"> Wild Dog control program 	<ul style="list-style-type: none"> Wild dog and fox trapping was completed in October 2021, Trapping efforts covered all Stratford Coal owned properties including biodiversity offsets and Mining Leases. 6 Wild Dogs and 3 Foxes were captured. Opportunistic surveillance and trapping has been conducted in Q1 2022.



Photos: Wild dogs caught on trail cameras during opportunistic trapping in Q1 2022.

3f. Biodiversity Management

Management Area	Project	Status
Nest Box Program	<ul style="list-style-type: none"> Nest Box Installation Nest box Monitoring 	<ul style="list-style-type: none"> An additional 93 Nest boxes were installed in the Stratford Biodiversity Area and Biodiversity Enhancement Area in March 2021. These nest boxes are to specifically target the Squirrel glider and other arboreal fauna. Quarterly nest box monitoring was undertaken in December 2021 and February 2022. The Annual monitoring of all nest boxes was undertaken in October 2021. A summary of the nest box progress is included in the 2021 Annual Review.
Fauna	<ul style="list-style-type: none"> Feral animal monitoring 	<ul style="list-style-type: none"> A feral animal survey was undertaken in September 2021. The results of the feral animal monitoring will be used to guide the implementation of ongoing feral animal control programs.



Map: Current and proposed nest boxes in the Stratford Biodiversity Areas.



Photo: Family of Squirrel Gliders in nest box, October 2021.



3g Mine Closure

Mine Closure Progress

- Condition 5, Schedule 2 of the SMC's Development Consent (SSD_4966) authorises mining operations to be carried at the SMC until 31 December 2025.
- Mining operations at Stratford are currently planned to be completed in approximately mid-2024 at which time the site will transition to closure.
- SSD_4966 and the Mining Leases continue to be in force until SCPL rehabilitates the site in accordance with the conditions of the Approval and MLs to the satisfaction of DPIE and the Resources Regulator.
- New RMP/Closure Plans are being prepared for submission to Resources Regulator on 30 June 2022.
- As the SMC progresses towards the end of its approved mine life, operations and activities at the SMC over the next four years will progressively change to reflect this.



3g Mine Closure Planning

Note: *Refer to Stratford Mining Operations Plan & Rehabilitation Management Plan Table 13 Mine Closure Planning Schedule.
*Further detail on mine closure planning progress is included in the Annual Review 2022.

Management Area	Project	Status
Mine Closure Planning General	<ul style="list-style-type: none"> Mine Closure Planning Program 	<ul style="list-style-type: none"> SCPL has established a Mine Closure Planning Program in the MOP in Section 10 and Table 13. IEMA was engaged in June 2021 to assist preparing an updated Mine Closure Planning Program. The Mine Closure Planning Program is intended to provide a strategy and a description of all the works required to develop the Final Closure Plan.
Rehabilitation Management Plan	<ul style="list-style-type: none"> Rehabilitation Management plan, including closure plan 	<ul style="list-style-type: none"> The Stratford Mining Complex Rehabilitation Management Plan, including closure plan is due for submission to the Resources Regulator prior to 02 August 2022. The RMP will be provided for consultation with the CCC.
Closure Risk Assessment	<ul style="list-style-type: none"> Mine Closure Risk Assessment review 	<ul style="list-style-type: none"> A review of the Duralie Coal Mine Rehabilitation and Mine Closure Risk Assessment was undertaken in August 2021. The outcomes of the risk assessment have been used to develop an updated actions register which forms the basis of the Mine Closure Planning Program.
Environmental Management Plans	<ul style="list-style-type: none"> EMP reviews for closure stage 	<ul style="list-style-type: none"> The EMPs will be progressively reviewed and updated as required, to reflect the current stage of operations and the ongoing rehabilitation and mine closure requirements. Identify post-closure environmental monitoring and maintenance requirements. Prepare detailed performance and completion criteria for mine closure.
Final land use	<ul style="list-style-type: none"> Potential final land-use planning 	<ul style="list-style-type: none"> The target post-mining land uses are defined in the RMP and shown in Figure 4 of the RMP.

3g Mine Closure Planning

Management Area	Project	Status
Stakeholder and Community	<ul style="list-style-type: none"> Stakeholder engagement 	<ul style="list-style-type: none"> Communications with the CCC regarding mine closure planning is ongoing through the life of the project. This presentation will continue to be updated to provide relevant information through the CCC forum. The Mine Closure Planning Program includes requirements for the development of the following strategies: <ul style="list-style-type: none"> Stakeholder Consultation Strategy, Community Engagement Strategy, Human Resources Strategy
Rehabilitated Landforms	<ul style="list-style-type: none"> Landform design and stability 	<ul style="list-style-type: none"> SCPL have continued to prepare the detailed final landform designs for the site. Xenith Consulting has prepared a refined final landform design based on the latest aerial survey and proposed mining schedules for the remaining life of mine. This landform will be included in the new RMP.
Water Management	<ul style="list-style-type: none"> Site water Balance 	<ul style="list-style-type: none"> SCPL will review the site water balance and final landform drainage design to ensure comparable drainage density to local natural landforms.
Final Voids	<ul style="list-style-type: none"> Water management and final void water balance 	<ul style="list-style-type: none"> SCPL is currently reviewing the final void closure requirements and preparing final void closure criteria for inclusion in the new RMP. Review of the final void site water balance is currently being prepared to ensure the balance incorporates the final landform design, surface water inflows and outflows to/from final void. Further review work is required.
	<ul style="list-style-type: none"> Groundwater Model 	<ul style="list-style-type: none"> Post-mining groundwater model verification is currently being undertaken to incorporate final void design and update the groundwater model. This work is being undertaken in conjunction with the final void water balance.
Rehabilitation Resources	<ul style="list-style-type: none"> Topsoil Resources 	<ul style="list-style-type: none"> A topsoil stockpile update was undertaken in July 2021 to ensure adequate topsoil is available for rehabilitation. The rehabilitation resources register will be updated throughout mining operations and closure.
Biodiversity Offset	<ul style="list-style-type: none"> Biodiversity Offset Integration 	<ul style="list-style-type: none"> Integration of the biodiversity offset strategy is a key component of the rehabilitated final land form and land use. SCPL will undertake an assessment of the SMC Biodiversity Offset Areas and Biodiversity Enhancement Areas to confirm completion of the Biodiversity Offset Strategy completion criteria and integration with the SMC rehabilitation.

4. Community Complaints - Summary

Stratford Complaint Summary

Period: 31/1/2022 - 20/04/2022

Period: 3 Months

Total No. of Complaints: 1

Total No. of Complainants: 1

Date/Time of Complaint	Complainant Location	Method of Complaint	Nature of Complaint	Investigation/Outcome
24/03/2022 16:37hrs	8.8km South of SCPL CHPP	Community Hotline	Various	<ul style="list-style-type: none"> • Senior Environment & Community Advisor (SECA) returned complainants call at 4:25PM. No answer. • The Complainant returned SECAs call at 4:37PM. • The Complainant listed his concerns to be dust, lighting, noise, blasting and damage to his property from blasting from both Stratford and Duralie Coal mines. • The Complainant stated that he had contacted the complaints line multiple times and had not received a call back. SECA informed The Complainant that the complaints line has been functioning and all complaints received by the complaints line are forwarded directly to the SECA and no complaints from The Complainant had been received by Stratford Coal or Duralie Coal. SECA advised that he would investigate the call logs of the complaints line and investigate any potential failure of the complaints line process. • SECA requested specific dates for the listed noise, dust and blasting concerns, the complainant said that he had a record and would be able to provide the specific details at a later date. • The Complainant stated that there was a constant glow of lights from Stratford CHPP and the constant glow was penetrating his bedroom window. SECA advised that investigation of the light source would need to be undertaken but would be difficult to identify due to distance. SECA agreed to investigate further. • The complainant stated that cracking had appeared in his home and believed it was due to blasting at Stratford and Duralie Coal. SECA offered to arrange a property investigation to investigate the cracking. Complainant thanked SECA and said he would confer with his wife and respond to the offer of the property investigation. • SECA thanked The complainant for their call.



5. Community Programs

Management Area	Project	Status
Support Programs	Stratford Coal Community Support Program	<ul style="list-style-type: none">The 2022 Stratford Coal Community Support Program presentation night was held on Thursday, 24th March 2022 at the Avon Valley Inn. Stratford Coal has granted over \$81,000 in funding to support 18 local community organisations across the Gloucester and Stroud region, aiming to make a positive difference to the community.
	Stratford Coal Education Support Fund	<ul style="list-style-type: none">The 2022 Stratford Coal Education Support Fund has been finalised and the grants confirmed at the annual committee meeting in March 2022. In 2022 a total of \$41,000 has been granted to students and local businesses for 8 x Tertiary courses, 2 x TAFE courses and 7 x Apprenticeships.

