

Stratford Coal CCC Meeting

Presentation –
Company Report & Overview
of Activities

May 2024

Thomas Kirkwood
Environment & Community Superintendent

Table of Contents

1. Agenda Item 7a (Progress at the Mine)
2. Agenda Item 7b (Environmental Reporting)
3. Agenda Item 7c (Environmental Management Plans and Monitoring)
4. Agenda Item 7d (Mine Closure Planning update)
5. Agenda Item 7e (Community Complaints)
6. Agenda Item 7f (Community Programs)
7. Agenda Item 7g (Stratford Renewable Energy Hub Update)

1. Progress at the Mine

Mining 1st Quarter 2024

Total Waste (BCM)	ROM (T)	Product Coking (T)	Product Thermal (T)
499,857	99,222	21,322	46,377

Note: Total Waste BCM includes mine rehandle

- Mining in Avon North continued. Single excavator and truck fleet operating day and evening shift.
- Backfilling of Roseville West Pit continued.
- BRN pit used as secondary dump.
- Last coal expected to be mined in Q3 2024.



Photo: Avon North Pit, Taken March 2024.



2. Environmental Reporting & Regulators

Management Area	Project	Status
Reporting	<ul style="list-style-type: none"> Stratford Mining Complex Annual Review 2023 Stratford Mining Complex Annual Biodiversity Report 2023 Stratford Mining Complex Annual Rehabilitation Report EPBC Approval Annual Compliance Report 	<ul style="list-style-type: none"> The 2023 Stratford Mining Complex Annual Review has been prepared and submitted to the DPHI and other regulators in March 2024. Once approved, the 2023 Annual Review will be distributed to the CCC members and will be made available on the Stratford Coal website. The Stratford Mining Complex 2023 Annual Biodiversity Report has been completed. The Annual Biodiversity Report has been included in the 2023 Annual Review. The Stratford Mining Complex 2023 Annual Rehabilitation Report has been completed and is available on the Stratford Coal website The EPBC 2023 Annual Compliance Report has been prepared and submitted in March 2024. The report is available on the Stratford Coal website.
Regulator	<ul style="list-style-type: none"> Environmental Management Plans (EMPs) Stratford Mining Complex Forward Program 	<ul style="list-style-type: none"> SCPL has prepared revised Environmental Management Plans to reflect the current status of the SMC. As the site moves into closure we will review the EMPs and transition into a closure focus. The 2024 Stratford Mining Complex Rehabilitation Forward Program has been updated for 2024 and is available on the Stratford Coal website.

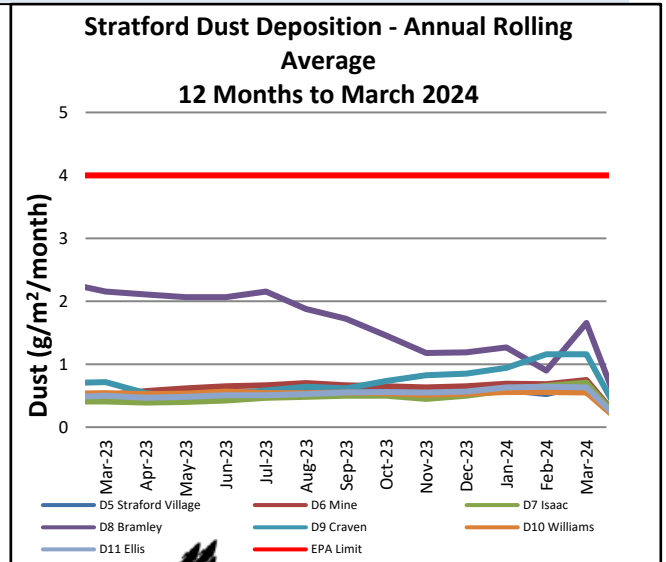
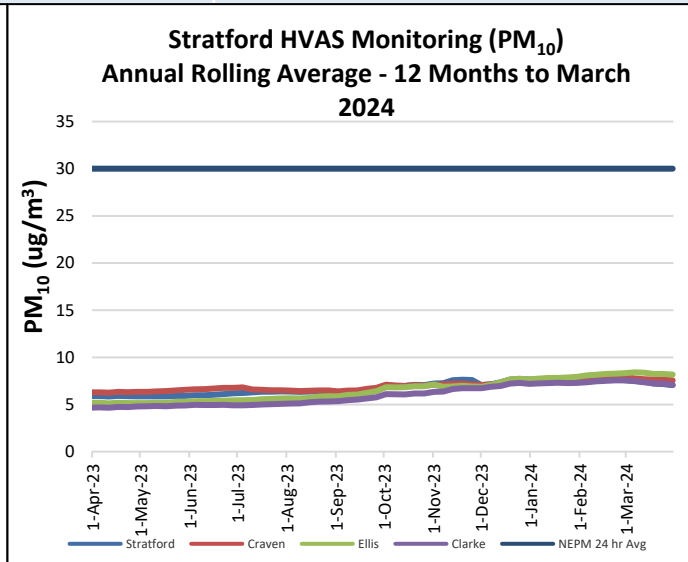
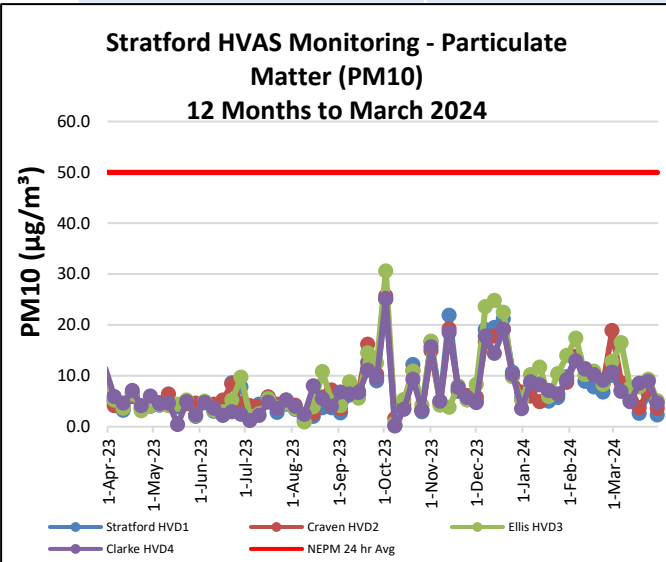
3. Environmental Management Plans & Monitoring

- a) Air Quality Management
- b) Blast Management
- c) Noise Management
- d) Water Management
- e) Rehabilitation Management
- f) Biodiversity Management
- g) Mine Closure Planning



3a. Air Quality Management

Management Area	Project	Status
Air Quality Monitoring	<ul style="list-style-type: none"> Real-time air quality monitoring 	<ul style="list-style-type: none"> The real-time air quality TEOM monitors in Stratford and Craven villages continue to operate. Generally good overall air quality. All sites below DPIE limit. Air quality results lower during months with higher rainfall. HVAS results provide more reliable data compared to dust deposition results and should be referred to when interpreting dust emissions. The real-time air quality management system analyses data from the TEOM units and records times when the air quality criteria is likely to be exceeded. The system will then provide alarms to staff to implement additional dust mitigation measures where required. No triggers have been received relating to mining operations.



3b. Blast Management

Management Area	Project	Status
Blasting	<ul style="list-style-type: none"> Blast Monitoring 	<ul style="list-style-type: none"> Blasting activities continued in Avon North Pit. For the current annual reporting period there have been no blast exceedances (<i>No more than 5% of total blasts allowed to exceed the 115dbI</i>). No blasts have exceeded the 5mm/s during the quarter and annual reporting period to date.

Date	Time	Isaac (B1) <u>7432</u>		Ex-Judge (B2) <u>7441</u>		Atkins (B6) <u>7434</u>		Greenwood <u>7422</u>		Clarke (B5) (Mine-owned) <u>7433</u> (previously 7377)		Overpressure Site Exceedance ¹	Ground Vibration Site Exceedance ¹	Monitored Blasts ¹
		mm/s	dBL	mm/s	dBL	mm/s	dBL	mm/s	dBL	mm/s	dBL	%	%	
	24hr													
Thursday, 8 February 2024	12:30:49	0.25	94.7	<0.24	<114	0.25	101.0	<0.24	<114	0.94	102.5	0.00%	0.0%	31
Wednesday, 14 February 2024	12:36:12	<0.24	<114	<0.24	<114	<0.24	<114	<0.24	<114	0.99	91.4	0.00%	0.0%	32
Thursday, 22 February 2024	12:51:06	<0.24	<114	<0.24	<114	<0.24	<114	<0.24	<114	1.61	95.5	0.00%	0.0%	33
Monday, 26 February 2024	12:35:00	<0.24	<114	<0.24	<114	<0.24	<114	<0.24	<114	0.64	89.5	0.00%	0.0%	34
Wednesday, 6 March 2002	12:43:00	<0.24	<114	<0.24	<114	<0.24	<114	<0.24	<114	0.41	91.4	0.00%	0.0%	35
Wednesday, 20 March 2024	12:52:00	<0.24	<114	<0.24	<114	<0.24	<114	<0.24	<114	1.54	91.4	0.00%	0.0%	36
Wednesday, 27 March 2024	13:07:00	<0.24	<114	<0.24	<114	<0.24	<114	<0.24	<114	<0.24	<114	0.00%	0.0%	37

- Note: Blast Compliance: No more than 5% of total blasts for annual monitoring period to exceed an overpressure of 115 dBL or ground vibration of 5 mm/s. No blast is to exceed an overpressure of 120 dBL or ground vibration of 10 mm/s.
- Note: Where no trigger is recorded the results indicate <0.22mm/s and <110.0dBL corresponding to the blast monitor settings.
- Note: Blast results for Clarke are extrapolated to the next nearest non-mined owned residence.

3c. Noise Management

Management Area	Project	Status
Monitoring	<ul style="list-style-type: none"> Monthly Noise Survey 	<ul style="list-style-type: none"> Three monthly attended noise monitoring rounds were undertaken during Q1. No non-compliant results were recorded during the surveys. Q1 reports are available on the Stratford Coal website. The next monitoring is scheduled for May 2024.
Real-Time Noise	<ul style="list-style-type: none"> Real-Time Noise System Noise forecast reports 	<ul style="list-style-type: none"> Real-time noise monitors continue to operate near Stratford Village and Craven Village. The integrated real-time noise management analyses data from the noise units, the weather station and the inversion towers and records times when either the noise criteria is likely to be exceeded or when noise enhancing weather conditions are present. The system provides alarms to staff to implement additional noise mitigation measures where required. Daily predicted noise and dust forecast reports are generated and are issued to the mining supervisors prior to each shift.



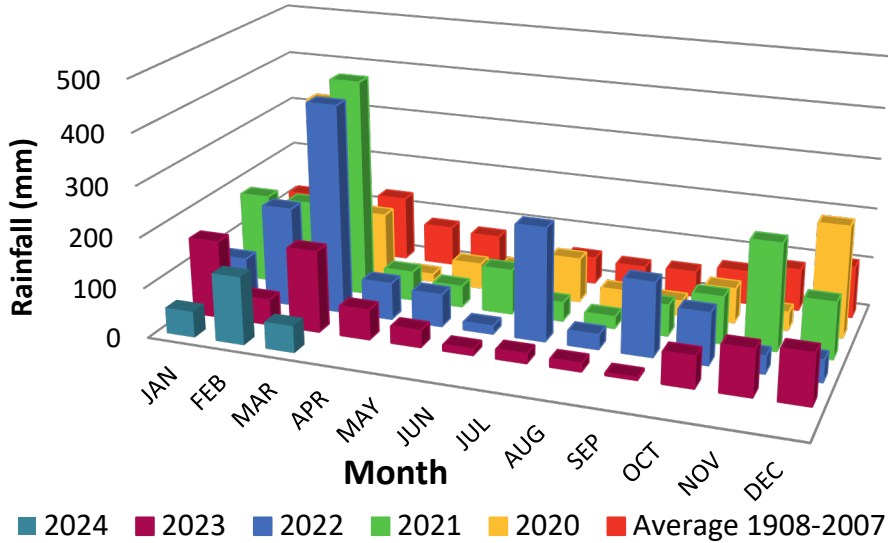
3d. Water Management

Management Area	Project	Status
Water Management Structures	<ul style="list-style-type: none">• Avon North and Stratford East Clean Water Diversions	<ul style="list-style-type: none">• Ongoing inspections, monitoring and maintenance have been completed in Q1 2024.
Surface Water Monitoring	<ul style="list-style-type: none">• Routine monitoring	<ul style="list-style-type: none">• Routine water sampling continued.• All results consistent with the SMC Environmental Assessment predictions.• Below average rainfall was received during Q1 2024.

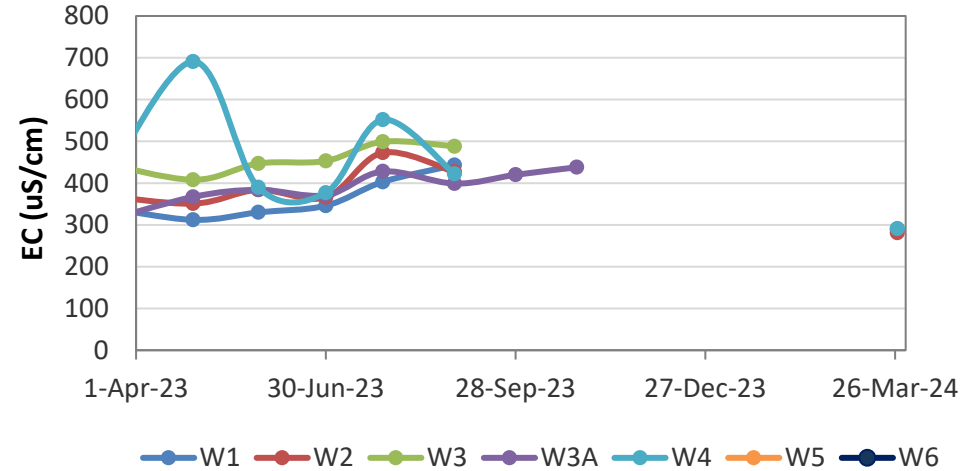


3d. Water Management

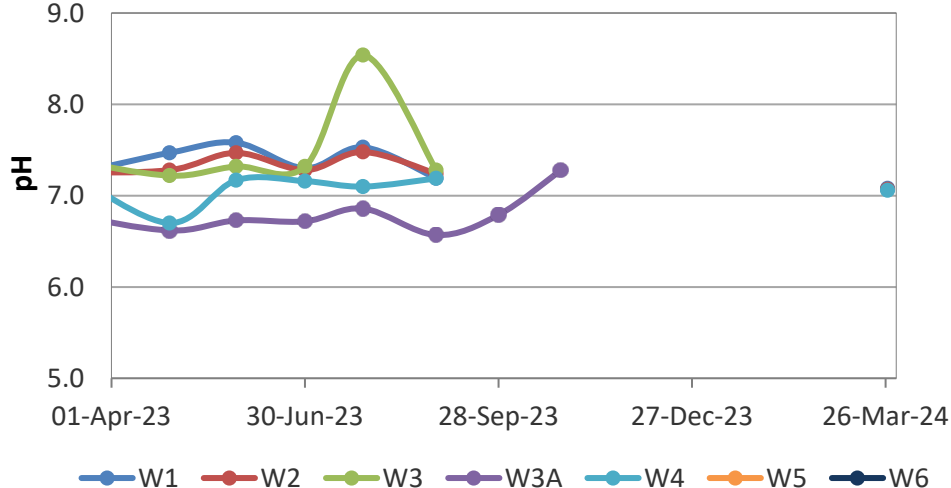
Stratford Mining Complex - Monthly Rainfall



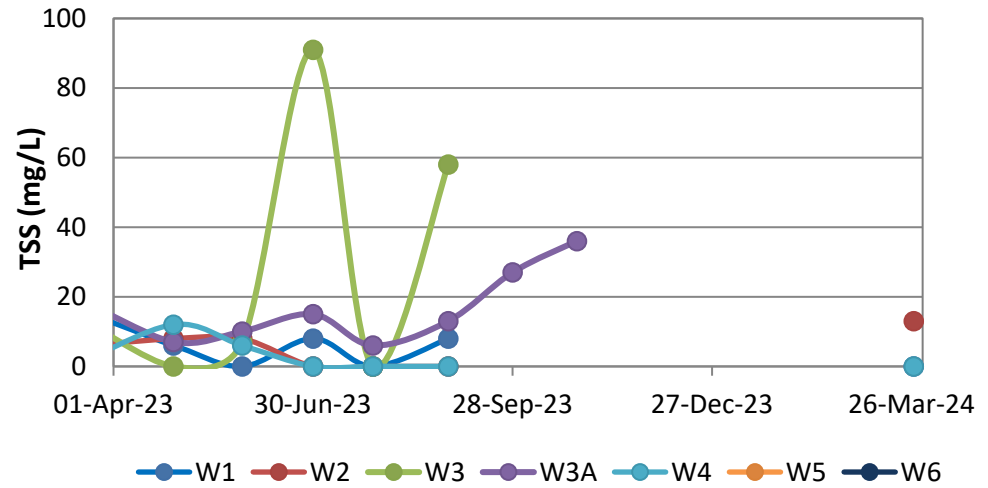
EC - Avon River & Avondale Creek 12 Months to March 2024



pH - Avon River & Avondale Creek 12 Months to March 2024



TSS - Avon River & Avondale Creek 12 Months to March 2024



3e. Rehabilitation Management

Management Area	Project	Status
Rehabilitated Waste Emplacements	<ul style="list-style-type: none">• Backfilling and bulk-shaping• Maintenance	<ul style="list-style-type: none">• Backfilling in Roseville West Pit and Bowens Road North has continued in Q1 2024.• Slashing of Old Main Pit Rehabilitation was completed in March 2024
Monitoring	<ul style="list-style-type: none">• Vegetation Monitoring - Ecosystem Function Analysis	<ul style="list-style-type: none">• Rehabilitation monitoring incorporating landscape function analysis and vegetation dynamics was completed in April 2023. A summary of the results have been included in the 2023 Annual Review.



Plate 1: OMP Rehabilitation Maintenance. March 2024.



3f. Biodiversity Management

Management Area	Project	Status
Biodiversity Offset Area	<ul style="list-style-type: none"> Revegetation Planning Revegetation Works 	<ul style="list-style-type: none"> Three-year revegetation planting and infill plan has been completed. Approximately 3000 plants are to be planted into four areas in May 2024 to complete revegetation in the Biodiversity Offsets and Biodiversity Enhancement Areas.
Nest Box Program	<ul style="list-style-type: none"> Nest Box Monitoring 	<ul style="list-style-type: none"> Nest box monitoring was completed in Q4 2023 in the Stratford Biodiversity Offset and Enhancement areas. Annual Nest Box monitoring has found 93% of nest boxes were either occupied or showing signs of occupancy after approximately 3 years.
Weed Control	<ul style="list-style-type: none"> 2023/24 SMC Weed Control Program 	<ul style="list-style-type: none"> 2023/24 Biodiversity Offset Weed Control Program continued to target areas including Biodiversity offset areas, SMC operational areas and minor agricultural areas targeting Blackberry, Crofton weed, Tobacco bush, Privet and Lantana. Comprehensive weed mapping and construction of targeted action plan has been completed in the SMC Biodiversity Offset Areas



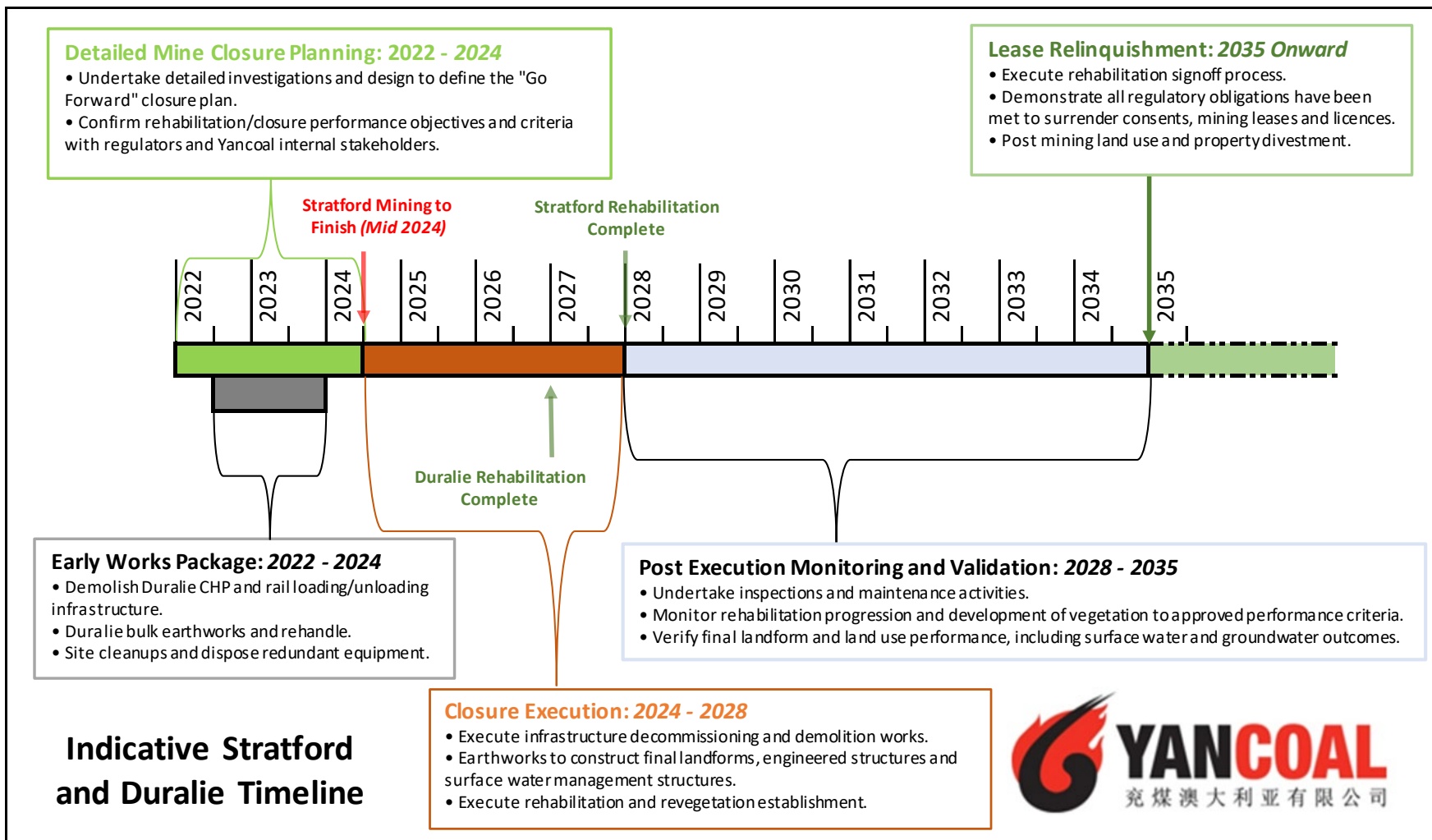
4. Mine Closure – General Information

Mine Closure Progress

- Detailed Mine Closure Studies - Expected completion in second half of 2024.
- Final Landform Rehabilitation Plan - Update following internal Detailed Mine Closure Plan.
- Detailed Mine Closure Plan will inform closure execution works.
- Ongoing bulk earthworks and rehabilitation activities following the completion of coal mining are planned until approximately 2028.

Consent (SSD_4966) and Mining Leases continue to be in force until the site is rehabilitated to the satisfaction of DPIE and Resources Regulator.

4. Detailed Mine Closure Planning – Timeline



4. Mine Closure – Transition to Closure

Focus for 2024

- Detailed Mine Closure Studies then Revise Final Landform Rehabilitation Plan
- Finish coal extraction in mid-2024
- Rehandling and reshaping
 - Use current excavator, supported by trucks and dozers.
 - Rehandle utilises excavator and truck fleet after last coal.
 - Expected to take until approximately end of 2027.
 - Bulk water transfer to commence in coming months to dewater Stratford East Pit.
- Rehabilitation
 - Progressive rehabilitation as areas become available.
- CHPP
 - Continues until last coal.
 - Decommissioning and power/services augmentation works commence following last coal
 - Currently for sale.
 - CHPP removal (if sold) or demolition proposed for 2025.
- Other
 - Augmentation design and construction works to enable decommissioning works.
 - Progressive updates of EMPs.

4. Mine Closure Planning

Aspect	Status
General	<ul style="list-style-type: none">• Detailed Mine Closure studies currently expected to be completed in the second half of 2024.• On-going iterations to optimise landform outcomes.
Rehabilitation	<ul style="list-style-type: none">• The Rehabilitation Management Plan (RMP) is available on the Stratford Coal website.• Yancoal and the Resources Regulator acknowledge that the currently proposed landforms may change as the closure planning evolves.• Final Landform and Rehabilitation Plans (FLRP) will be revised following completion of Detailed Mine Closure Plan.
Environmental Management, Monitoring & Maintenance	<ul style="list-style-type: none">• Approved EMPs are publicly available on the SMC website.• EMPs will be progressively reviewed and updated to reflect the stage of operations and closure works.• EMPs will identify post-closure environmental monitoring and maintenance requirements.
Stakeholder and Community	<ul style="list-style-type: none">• Communications with the workforce, CCC and other stakeholders will continue throughout closure.• Closure updates to the CCC will continue to be provided.• Community Support Program to prioritise community socio-economic transition projects.

4. Mine Closure Planning

Aspect	Status
Final land use	<ul style="list-style-type: none"> • The target post-mining land uses are agricultural grazing, native vegetation and water bodies. • Land uses are shown and defined in the RMP.
Final Landforms	<ul style="list-style-type: none"> • Landform refinements are continuing as part of the on-going mine closure planning. • Refinements are iterative, consider mine planning, landform stability, landscape evolution modelling, geochemistry and water management. • Final Landform Design revisions will be included in future FLRP revisions.
Final Voids	<ul style="list-style-type: none"> • Final void design detailed refinements are continuing. • Void water modelling iterations are being undertaken considering external drainage, landform refinements and groundwater predictions.
Water	<ul style="list-style-type: none"> • Water management and predictive water balance modelling is progressively being revised for rehabilitation and post rehabilitation phases. • Considerations include water storages, water diversions, drainage construction, rehabilitation sequencing and erosion and sediment control. • Water infrastructure design work is continuing (bunds, drains and sediment dams etc).
Infrastructure	<ul style="list-style-type: none"> • Options for sale, reuse and recycling of resources and infrastructure are being investigated. • Staged decommissioning and demolition planning is in progress. • Infrastructure will be progressively decommissioned where not required to support closure works. • Infrastructure to be retained will be subject to approval by the Resources Regulator.

5. Community Complaints - Summary

- No complaints to report in Q1 2024

6. Community Programs

Management Area	Project	Status
Support Programs	Stratford Coal Community Support Program (CSP)	<ul style="list-style-type: none">• Since 2010, Stratford Coal has granted over \$1,000,000 to local community groups.• 26 local community groups have been granted support as part of the 2024 CSP funding round with total funding of \$86,000.• The CSP is a voluntary initiative and will continue to run until approximately 2028.• The CSP will prioritise projects that support the community's socio-economic transition.
	Stratford Coal Education Support Fund	<ul style="list-style-type: none">• The 2023 ESF have been finalised and the grants confirmed at the annual committee meeting in March 2024. In 2024, a total of \$34,500 has been granted to students and local businesses supporting 10 x Tertiary courses, 5 x TAFE courses and 2 x Apprenticeships.



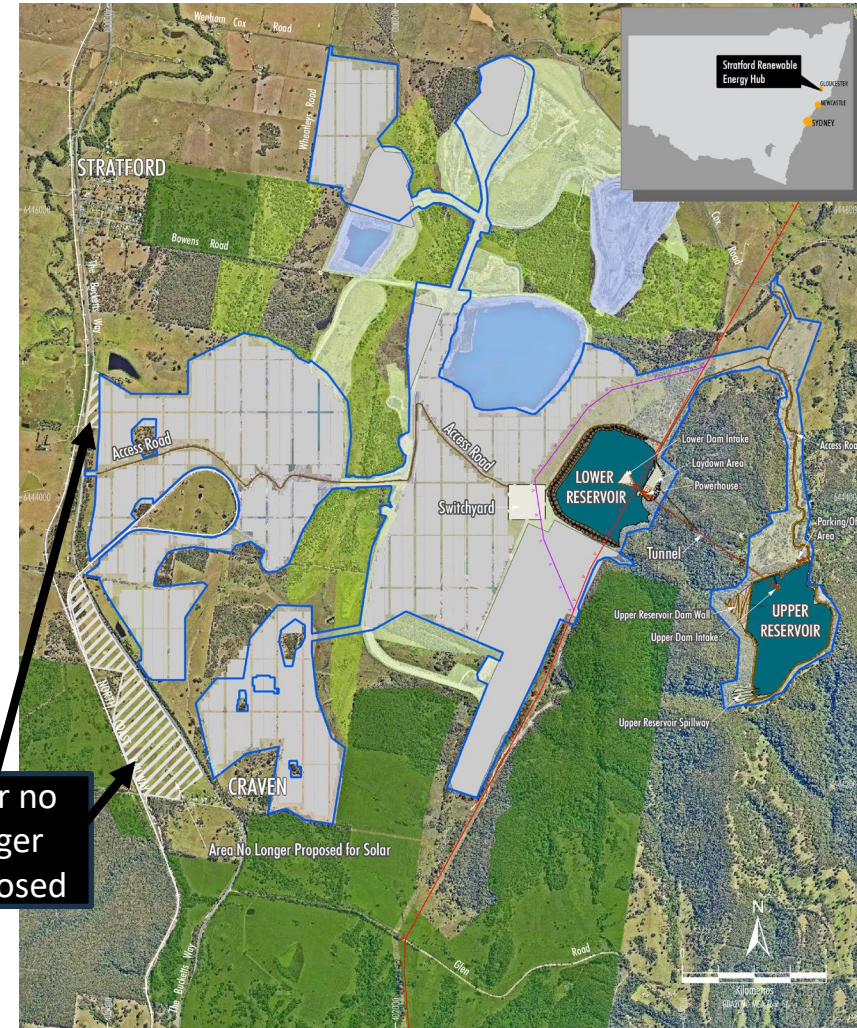
Plate 4: Community Support Program (CSP) recipients at the 2024 CSP presentation night.

7. Stratford Renewable Energy Hub (SREH) - Update

- The Department of Planning issued Secretary's Environmental Assessment Requirements (SEARs) in February 2024, these are publicly available on the Department's website: <https://www.planningportal.nsw.gov.au/major-projects/projects/stratford-pumped-hydro-and-solar>
- Specialist studies to address the SEARs and inform an Environmental Impact Statement (EIS) are progressing, including (among other studies):
 - Biodiversity Assessment
 - Visual Assessment
 - Social Assessment
 - Traffic and Transport Assessment
 - Noise and vibration
 - Cultural heritage

7. Stratford Renewable Energy Hub (SREH) - Update

- Community information sessions were held in Stratford and Gloucester in March.
- Approximately 20 community members attended each session.
- The predominant expressed concern was the proximity of solar panels to the Buckets Way.
- Yancoal has amended the solar layout in response to these concerns.
- Yancoal is aiming to lodge the EIS and development application for the Project in late June.
- The community and other interested stakeholders will have further opportunity to comment on the proposal when the EIS is publicly exhibited, which is expected in July/August 2024



7. Stratford Renewable Energy Hub (SREH) - Update

Project as proposed in Scoping Report



Project as currently proposed

