

Stratford Coal CCC Meeting

Presentation –
Company Report & Overview
of Activities

February 2023

Thomas Kirkwood
Senior Environment & Community Advisor

Table of Contents

1. Agenda Item 7a (Progress at the Mine)
2. Agenda Item 7b (Environmental Reporting)
3. Agenda Item 7c (Environmental Management Plans and Monitoring)
4. Agenda Item 7d (Mine Closure Planning update)
5. Agenda Item 7e (Community Complaints)
6. Agenda Item 7f (Community Programs)

1. Progress at the Mine

Mining 4th Quarter 2022

	Total Waste (BCM)	ROM (T)	Product Coking (T)	Product Thermal (T)
Q4 2022	1,224,407	318,741	61,545	136,662

Note: Total Waste BCM includes mine rehandle

- Mining in Avon North continued during the quarter. Day and evening shift.
- Backfilling of Roseville West Pit commenced in April 2022 with most waste taken to this pit.
- Minor BRN backfilling has continued during the quarter.



2. Environmental Reporting & Regulators

Management Area	Project	Status
Reporting	<ul style="list-style-type: none"> Stratford Mining Complex Annual Review 2022 Stratford Mining Complex Annual Biodiversity Report 2022 	<ul style="list-style-type: none"> The Stratford Mining Complex 2022 Annual Review is currently being compiled. The Annual Review 2022 will be distributed to the CCC members and will be made available on the Stratford Coal website The Stratford Mining Complex 2022 Annual Biodiversity report is currently being compiled. The Annual biodiversity report will be included in the 2022 Annual Review.
Regulator	<ul style="list-style-type: none"> Resources Regulator Rehabilitation Reform Environmental Management Plans 	<ul style="list-style-type: none"> Stratford prepared and submitted a new Rehabilitation Management Plan and Mine Closure Plan to the Resource Regulator in August 2022 to comply with the Resource Regulators new planning and reporting standards. SCPL has prepared revisions of the Stratford Environmental Management Plans to reflect the current status of the SMC. The revised plans have been progressively submitted to DPIE for approval and approved plans have been made publicly available on the Stratford Coal Website.

3. Environmental Management Plans & Monitoring

- a) Air Quality Management
- b) Blast Management
- c) Noise Management
- d) Water Management
- e) Rehabilitation Management
- f) Biodiversity Management
- g) Mine Closure Planning

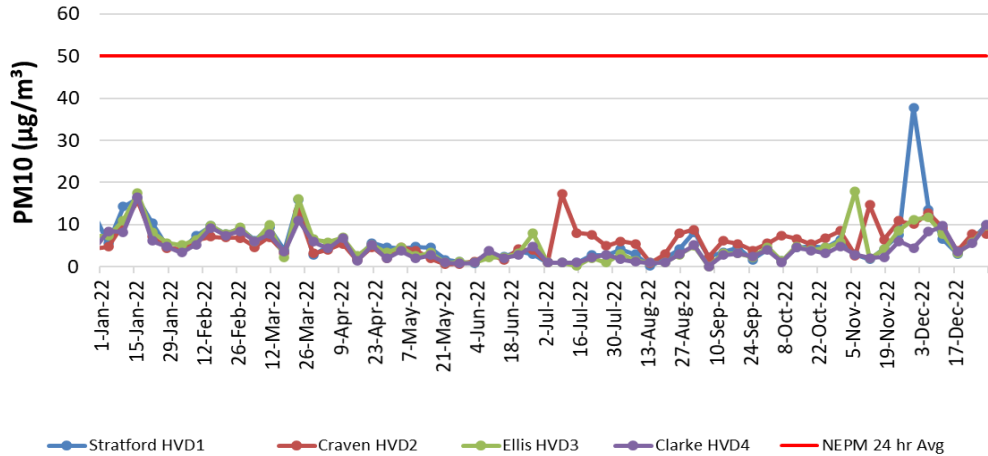


3a. Air Quality Management

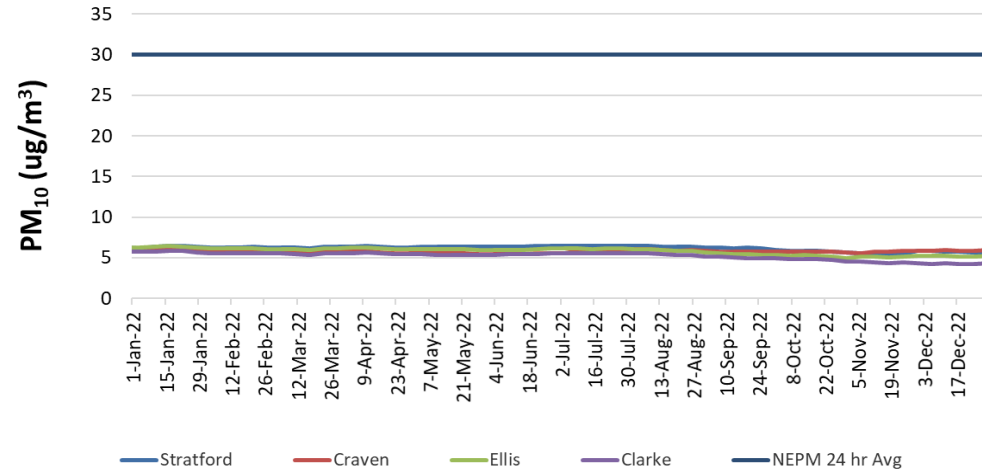
Management Area	Project	Status
Air Quality Monitoring	<ul style="list-style-type: none">Real-time air quality monitoring	<ul style="list-style-type: none">The real-time air quality TEOM monitors in Stratford and Craven villages continue to operate.General ambient PM10 dust levels have been very low throughout Spring/Summer due to increased rainfall.The real-time air quality management system analyses monitoring data from the TEOM units and records times when the air quality criteria is likely to be exceeded. The system will then provide alarms to staff to implement additional dust mitigation measures where required.No triggers have been received relating to mining operations.

3a. Air Quality Management

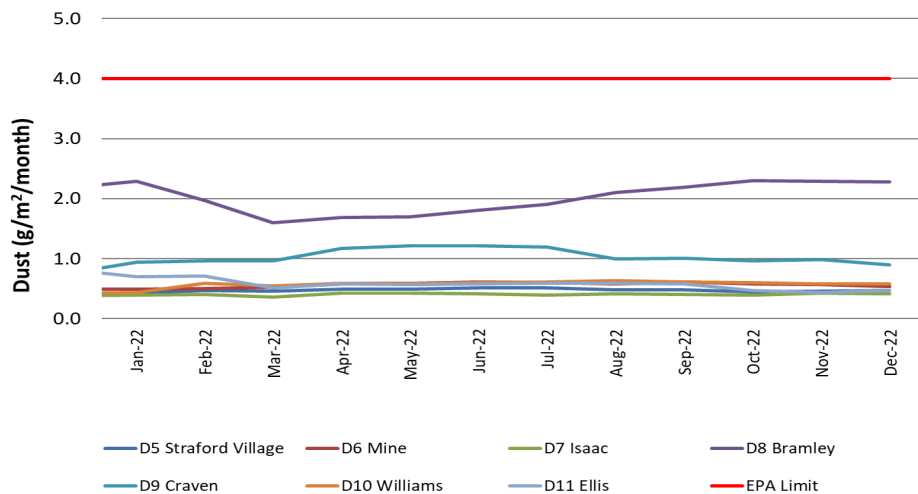
**Stratford HVAS Monitoring - Particulate Matter (PM10)
12 Months to December 2022**



**Stratford HVAS Monitoring (PM₁₀)
Annual Rolling Average - 12 Months to December 2022**



**Stratford Dust Deposition - Annual Rolling Average
12 Months to December 2022**



- Generally good overall air quality.
- All sites below DPIE limit. Air quality results lower during months with higher rainfall.
- Consistent air quality results with minor elevation seen in HVAS results on hot and windy days.
- HVAS results provide more reliable data compared to dust deposition results and should be referred to when interpreting dust emissions.

3b. Blast Management

Management Area	Project	Status
Blasting	<ul style="list-style-type: none">• Blast Monitoring• Blast Results• Blasting Preparations	<ul style="list-style-type: none">• Blasting activities continued in Avon North Pit.• For the current annual reporting period there have been no blast exceedances (<i>No more than 5% of total blasts allowed to exceed the 115dbl</i>).• No blasts exceeded the 5mm/s during the quarter. For the annual reporting period no blasts have exceed 5mm/s.• Blast notifications have continued.• Additional recipients have been added to the notification list on request.
Building Inspections	<ul style="list-style-type: none">• Baseline condition inspections	<ul style="list-style-type: none">• None requested.



3b. Blast Management

Date	Time	Isaac (B1) <u>7432</u>		Ex-Judge (B2) <u>7441</u>		Atkins (B6) <u>7434</u>		Greenwood <u>7422</u>		Bagnall (Extrapolated result)		Overpressure Site Exceedance ¹	Ground Vibration Site Exceedance ¹	Monitored Blasts ¹
		mm/s	dBL	mm/s	dBL	mm/s	dBL	mm/s	dBL	mm/s	dBL	%	%	
	24hr													
Friday, 4 November 2022	12:57:03	0.25	91.5	0.25	92.7	<0.24	<114	<0.24	<114	0.93	104.6	0.00%	0.0%	18
Wednesday, 9 November 2022	12:37:11	0.52	87.1	<0.24	<114	0.36	98.5	<0.24	<114	1.64	101.8	0.00%	0.0%	19
Friday, 11 November 2022	12:44:00	<0.24	<114	<0.24	<114	<0.24	<114	<0.24	<114	<0.24	<114	0.00%	0.0%	20
Monday, 14 November 2022	9:05:00	0.25	87.1	0.35	80.7	<0.24	<114	<0.24	<114	0.35	107.7	0.00%	0.0%	21
Tuesday, 22 November 2022	9:29:00	<0.24	<114	<0.24	<114	<0.24	<114	<0.24	<114	0.72	103.0	0.00%	0.0%	22
Monday, 28 November 2022	12:57:00	<0.24	<114	<0.24	<114	<0.24	<114	<0.24	<114	0.68	104.6	0.00%	0.0%	23
Friday, 2 December 2022	12:33:37	0.30	93.1	0.32	84.2	<0.24	<114	<0.24	<114	0.55	108.2	0.00%	0.0%	24
Friday, 9 December 2022	12:47:22	0.26	83.6	0.26	80.7	<0.24	<114	<0.24	<114	0.41	103.8	0.00%	0.0%	25
Friday, 16 December 2022	12:52:00	0.29	95.6	0.25	90.2	0.26	102.2	0.23	94.8	0.96	112.1	0.00%	0.0%	26
Wednesday, 21 December 2022	12:42:34	0.30	95.6	0.29	80.7	<0.24	<114	<0.24	<114	1.16	107.2	0.00%	0.0%	27
Friday, 6 January 2022	12:47:24	0.27	83.6	<0.24	<114	<0.24	<114	<0.24	<114	<0.24	<114	0.00%	0.0%	28

- *Note: Blast Compliance: No more than 5% of total blasts for annual monitoring period to exceed an overpressure of 115 dBL or ground vibration of 5 mm/s. No blast is to exceed an overpressure of 120 dBL or ground vibration of 10 mm/s.*
- *Note: Where no trigger is recorded the results indicate <0.22mm/s and <110.0dBL corresponding to the blast monitor settings.*
- *Note: Blast results for Clarke are extrapolated to the next nearest non-mined owned residence.*



3c. Noise Management

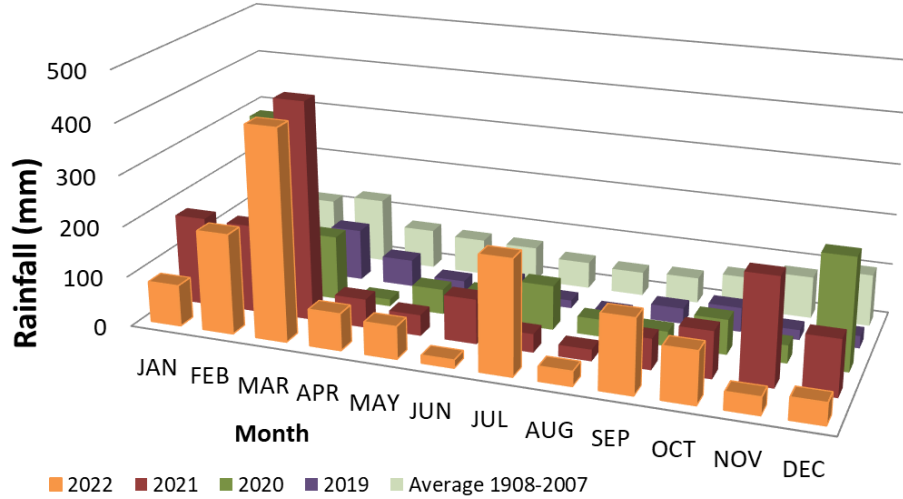
Management Area	Project	Status
Monitoring	<ul style="list-style-type: none"> Monthly Noise Survey Sound Power Monitoring 	<ul style="list-style-type: none"> Monthly attended noise monitoring rounds was undertaken during Q4 2022. No non-compliant results were recorded during the surveys. Reports will be made available on the Stratford Coal website. The next monitoring is scheduled in February 2023. Sound Power Level Noise Monitoring of the mobile plant fleet was undertaken in October 2022.
Real-Time Noise	<ul style="list-style-type: none"> Real-Time Noise System Noise forecast reports 	<ul style="list-style-type: none"> Real-time noise monitors continue to operate near Stratford Village and Craven Village. The integrated real-time noise management system is operational. The system analyses monitoring data from the noise units, the weather station and the inversion towers and records times when either the noise criteria is likely to be exceeded or when noise enhancing weather conditions are present. The system will then provide alarms to staff to implement additional noise mitigation measures where required. Daily predicted noise and dust forecast reports are generated and are issued to the mining supervisors prior to each shift.

3d. Water Management

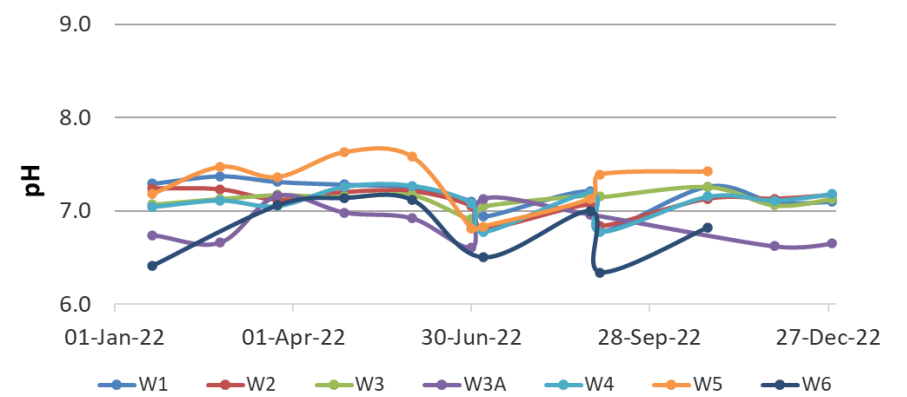
Management Area	Project	Status
Site Water Management	<ul style="list-style-type: none"> Annual Water Balance Review 	<ul style="list-style-type: none"> The 2021 annual Site Water Balance has been prepared. A summary is included in the 2021 Annual Review and has been made available on the Stratford Coal website. The 2022 Site Water Balance report is currently being prepared.
Water Management Structures	<ul style="list-style-type: none"> Avon North and Stratford East Clean Water Diversions 	<ul style="list-style-type: none"> Ongoing inspections, monitoring and maintenance has been completed in Q4 2022.
Surface Water Monitoring	<ul style="list-style-type: none"> Routine monitoring 	<ul style="list-style-type: none"> Routine water sampling continued. All results consistent with the SMC Environmental Assessment predictions. <u>Below</u> average rainfall was received during Q4 2022. Elevated Electrical Conductivity results at Surface Water Monitoring Point W5 were observed. Deemed to be due to semi stagnation of the pools of water adjacent to the monitoring point. High TSS (Total Suspended Solids) result observed at Monitoring Point W1 in September, elevated reading observed to be a result of rain runoff from a nearby private and publicly owned land.
Groundwater Monitoring	<ul style="list-style-type: none"> Routine monitoring 	<ul style="list-style-type: none"> Routine groundwater sampling continued. All results consistent with the SMC Environmental Assessment predictions.

3d. Water Management

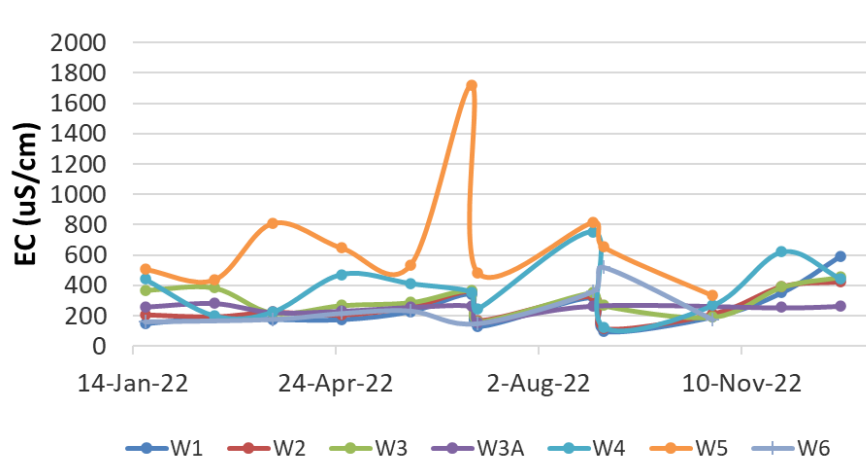
Stratford Monthly Rainfall



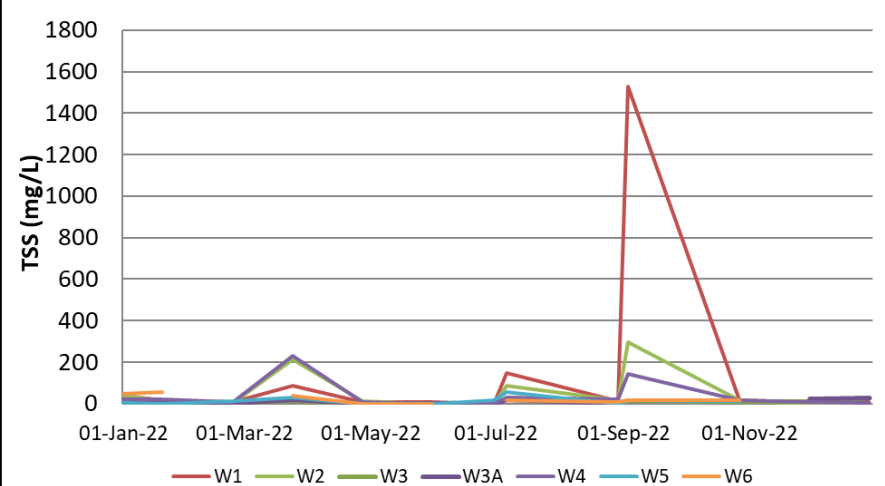
pH - Avon River & Avondale Creek 12 Months to December 2022



EC - Avon River & Avondale Creek 12 Months to December 2022



TSS - Avon River/Avondale Creek 12 Months to December 2022



3e. Rehabilitation and Biodiversity Management

Management Area	Project	Status
Rehabilitated Waste Emplacements	<ul style="list-style-type: none"> • Backfilling and bulk-shaping 	<ul style="list-style-type: none"> • Backfilling in Roseville West Pit and Bowens Road North has continued in Q1 2022.
Monitoring	<ul style="list-style-type: none"> • Vegetation Monitoring - Ecosystem Function Analysis 	<ul style="list-style-type: none"> • Rehabilitation monitoring incorporating landscape function analysis and vegetation dynamics was completed in April 2022. The results will be included in the next Annual Review which is currently being prepared.
Biodiversity Offset Area	<ul style="list-style-type: none"> • Revegetation Planning • Revegetation works 	<ul style="list-style-type: none"> • Following postponement due to wet ground conditions, the 2022 Q2 planting program will recommence in February 2023. • Planting areas will include offset properties near Woods Rd and Stratford Village. Additional plantings have been undertaken along Wenham Cox Rd, BRN Rehabilitation area and Roseville West Rehabilitation area.

4. Mine Closure

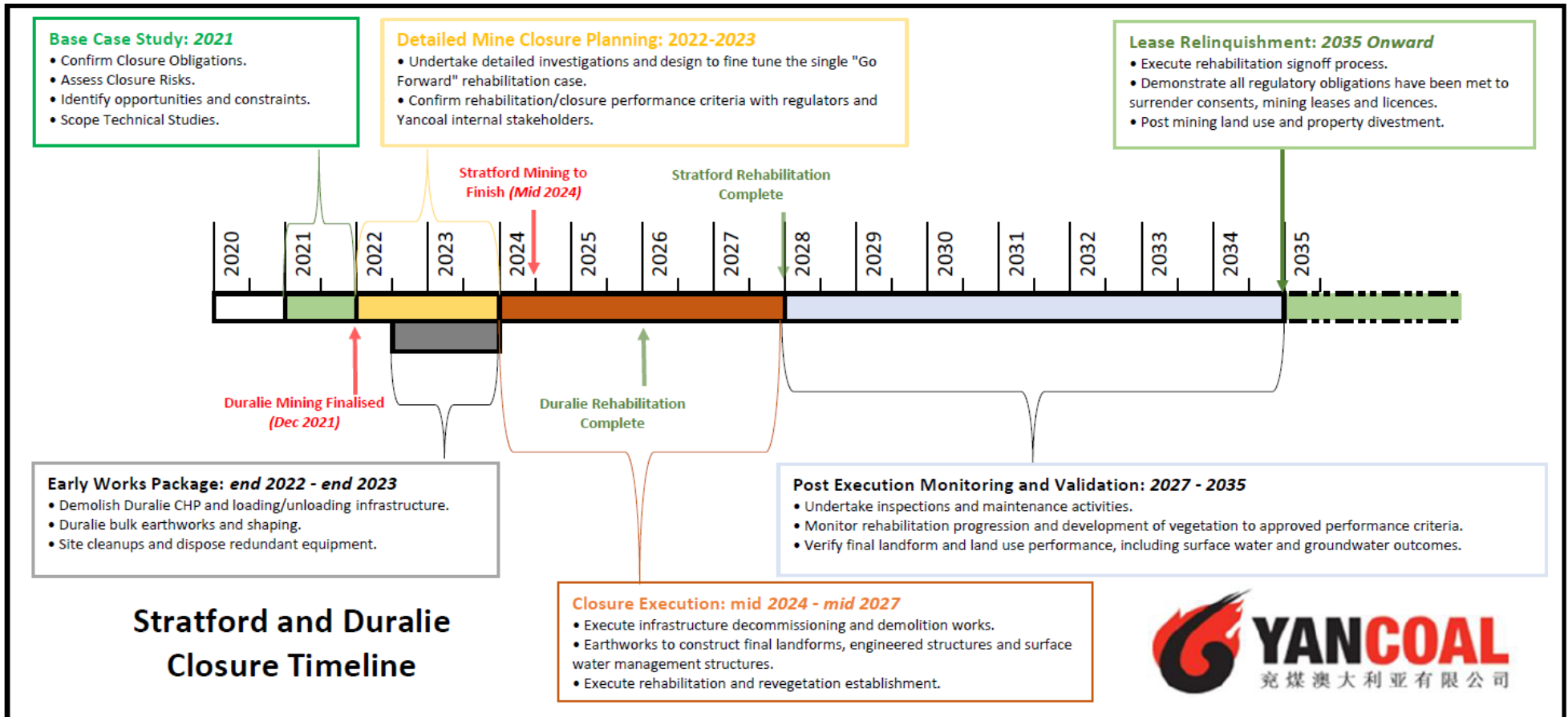
Mine Closure Progress

- Condition 5, Schedule 2 of the SMC's Development Consent (SSD_4966) authorises mining operations to be carried at the SMC until 31 December 2025.
- Mining operations at Stratford are currently planned to be completed in approximately mid-2024 at which time the site will transition to closure.
- SSD_4966 and the Mining Leases continue to be in force until SCPL rehabilitates the site in accordance with the conditions of the Approval and MLs to the satisfaction of DPIE and the Resources Regulator.
- New RMP/Closure Plans have been submitted to Resources Regulator.
- As the SMC progresses towards the end of its approved mine life, operations and activities at the SMC over the next three years will progressively change to reflect this.
- Ongoing bulk earthworks and rehabilitation activities planned for 2-3 years following the completion of coal mining.

4. Closure Planning Approach



4. Detailed Mine Closure Planning – Closure Timeline



4. Mine Closure Planning

Note: *Refer to Stratford Mining Operations Plan & Rehabilitation Management Plan Table 13 Mine Closure Planning Schedule.
*Further detail on mine closure planning progress is included in the Annual Review 2022.

Management Area	Project	Status
Mine Closure Planning General	<ul style="list-style-type: none"> Detailed Mine Closure Planning Program 	<ul style="list-style-type: none"> SCPL has updated the Mine Closure Planning Program in the Stratford Mining Complex Rehabilitation Management Plan (RMP). The Mine Closure Planning Program is intended to provide a strategy and a description of all the works required to develop the Detailed Mine Closure Plan. IEMA was engaged in June 2021 to assist preparing the Detailed Mine Closure Plan.
Rehabilitation Management Plan	<ul style="list-style-type: none"> Rehabilitation Management Plan, including Closure Plan 	<ul style="list-style-type: none"> The RMP, including the updated closure planning program was submitted to the Resources Regulator in July 2022. The RMP has been provided for consultation with the CCC. The RMP is available on the Stratford Coal website
Closure Risk Assessment	<ul style="list-style-type: none"> Mine Closure Risk Assessment review 	<ul style="list-style-type: none"> A review of the Stratford Coal Mine Rehabilitation and Mine Closure Risk Assessment was undertaken in August 2021. The outcomes of the risk assessment have been used to develop an updated actions register which forms the basis of the Mine Closure Planning Program. This will be updated again in early-mid 2023 to ensure risks have been considered in the planning process. A post closure public safety risk assessment will be undertaken over coming months.
Environmental Management Plans	<ul style="list-style-type: none"> EMP reviews for closure stage 	<ul style="list-style-type: none"> EMPs will be progressively reviewed and updated to reflect the current stage of operations and ongoing rehabilitation and mine closure requirements. EMPs will identify post-closure environmental monitoring and maintenance requirements. Post-closure monitoring and maintenance activities will continue until the specific completion criteria has been met and confirmation has been received from the relevant authority.
Final land use	<ul style="list-style-type: none"> Potential final land-use planning 	<ul style="list-style-type: none"> The target post-mining land uses for previously disturbed mining land are defined in the RMP and shown in Figure 4 of the RMP. SCPL is currently preparing and post-mining land use strategy and property divestment strategy for all company owned land.

4. Mine Closure Planning

Management Area	Project	Status
Stakeholder and Community	<ul style="list-style-type: none"> Stakeholder engagement strategy 	<ul style="list-style-type: none"> Communications with the CCC regarding mine closure planning is ongoing. This presentation will continue to be updated to provide relevant information through the CCC forum. The Mine Closure Planning Program includes requirements for the development of the following strategies: Stakeholder Consultation Strategy, Human Resources Strategy and a Closure Socio-Economic Impact Assessment. Stakeholder and HR strategies have been finalised. The Socio-economic impact assessment has been finalised and a presentation for the CCC prepared.
Rehabilitated Landforms	<ul style="list-style-type: none"> Landform design and stability 	<ul style="list-style-type: none"> SCPL have prepared the detailed final landform designs for the site. These are now presented in the RMP. Further refinement based on the outcomes of the surface water and groundwater modelling will be required. Preparation of a geotechnical assessment and specifications for the final void design have continued to ensure the long-term void is safe and stable.
Water Management	<ul style="list-style-type: none"> Site water Balance 	<ul style="list-style-type: none"> SCPL will review the site water balance and final landform drainage design to ensure comparable drainage density to local natural landforms.
Final Voids	<ul style="list-style-type: none"> Water management and final void water balance 	<ul style="list-style-type: none"> Void closure criteria have been prepared and are detailed in the RMP. Review of the final voids site water balance models is currently being finalised to ensure the balance incorporates the updated final landform design, surface water inflows and outflows and recently updated groundwater modelling. This work is ongoing and will form an important part of the closure program.
	<ul style="list-style-type: none"> Groundwater Model 	<ul style="list-style-type: none"> Post-mining groundwater model verification has been finalised and the data is being used in the final voids water balance. Additional work may be required to inform the closure project at a later time.
Rehabilitation Resources	<ul style="list-style-type: none"> Topsoil Resources 	<ul style="list-style-type: none"> A topsoil stockpile update was undertaken in July 2022 and confirmed adequate topsoil is available for rehabilitation. The rehabilitation resources register will be updated throughout mining operations and closure.
Biodiversity Offset	<ul style="list-style-type: none"> Biodiversity Offset Integration 	<ul style="list-style-type: none"> Integration of the biodiversity offset strategy is a key component of the rehabilitated final land form and land use. SCPL will undertake an assessment of the SMC Biodiversity Offset Areas and Biodiversity Enhancement Areas to confirm completion of the Biodiversity Offset Strategy completion criteria and integration with the SMC rehabilitation.



4. Community Complaints - Summary

- No complaints to report in Q4 2022

5. Community Programs

Management Area	Project	Status
Support Programs	Stratford Coal Community Support Program	<ul style="list-style-type: none">• Applications have closed for the 2023 Stratford Coal Community Support Program.• Applications are currently being assessed with successful applicants being notified by email and post in February 2023.• Applications for the 2024 community support program will re-open in September 2023.
	Stratford Coal Education Support Fund	<ul style="list-style-type: none">• The Stratford Coal Education Support Fund applications closed on 31 January 2023.• Successful applicants will be notified by the fund committee following assessment.