

# Stratford Coal CCC Meeting

Presentation –  
Company Report & Overview  
of Activities

August 2024

Thomas Kirkwood  
Environment & Community Superintendent

# Table of Contents

1. Agenda Item 7a (Progress at the Mine)
2. Agenda Item 7b (Environmental Reporting)
3. Agenda Item 7c (Environmental Management Plans and Monitoring)
4. Agenda Item 7d (Mine Closure Planning update)
5. Agenda Item 7e (Community Complaints)
6. Agenda Item 7f (Community Programs)
7. Agenda Item 7g (Stratford Renewable Energy Hub Update)

# 1. Progress at the Mine

## Mining 2<sup>nd</sup> Quarter 2024

Total Waste (BCM)	ROM (T)	Product Coking (T)	Product Thermal (T)
639,158	21,825	5,089	16,645

Note: Total Waste BCM includes mine rehandle

- Coal extraction in Avon North ceased in May.
- Excavator re-handle commenced at Roseville West and BRN.
- Last coal railed in July.
- 121,048 ROM (T) for the year.



Photo: Bowens Road North Pit, Taken July 2024.

# 1. Progress at the Mine

## Final Coal Extraction

After almost 30 years, coal extraction at Stratford ended in May 2024.

Coal extraction ceased slightly ahead of schedule due to geotechnical challenges and the site has now commenced the transition to mine closure.



Photo: Avon North Final Pit, Taken June 2024.

# 1. Progress at the Mine

## Final Coal Railed

- Final coal train loaded July 2024.
- Over 65 million tonnes railed.
- CHPP decommissioning commenced.



Photo: Final Coal Train Being Loaded, Taken July 2024.



Photo: Yancoal Employees and Contractors on Site Following Final Coal Train, Taken July 2024.

# 2. Environmental Reporting & Regulators

Management Area	Project	Status
<b>Reporting</b>	<ul style="list-style-type: none"> <li>Stratford Mining Complex Annual Review 2023</li> <li>Stratford Mining Complex Annual Biodiversity Report 2023</li> </ul>	<ul style="list-style-type: none"> <li>The Stratford Mining Complex 2023 Annual Review has been prepared and submitted to DPHI and other regulators in March 2024. Once approved, the 2023 Annual Review will be distributed to the CCC member and made available on the Stratford Coal website.</li> <li>The Stratford Mining Complex 2023 Annual Biodiversity Report has been completed. The Annual Biodiversity Report has been included in the 2023 Annual Review.</li> </ul>
<b>Regulator</b>	<ul style="list-style-type: none"> <li>Environmental Management Plans (EMPs)</li> <li>Resource Regulator</li> </ul>	<ul style="list-style-type: none"> <li>SCPL has prepared revised Environmental Management Plans to reflect the current status of the SMC.</li> <li>As the site moves into closure we will review the EMPs and transition into a closure focus.</li> <li>The Regulator (Mining Act Inspectorate) completed a site inspection following final coal extraction from the Avon N pit.</li> </ul>

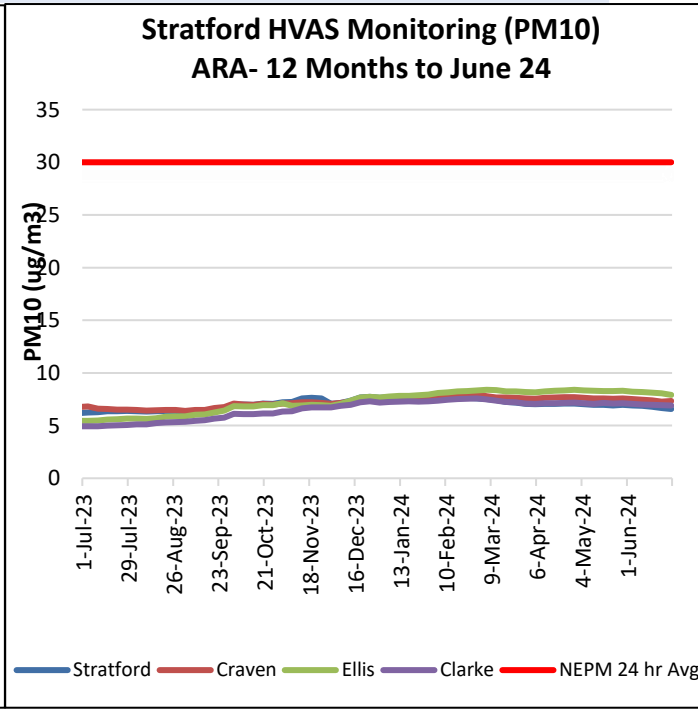
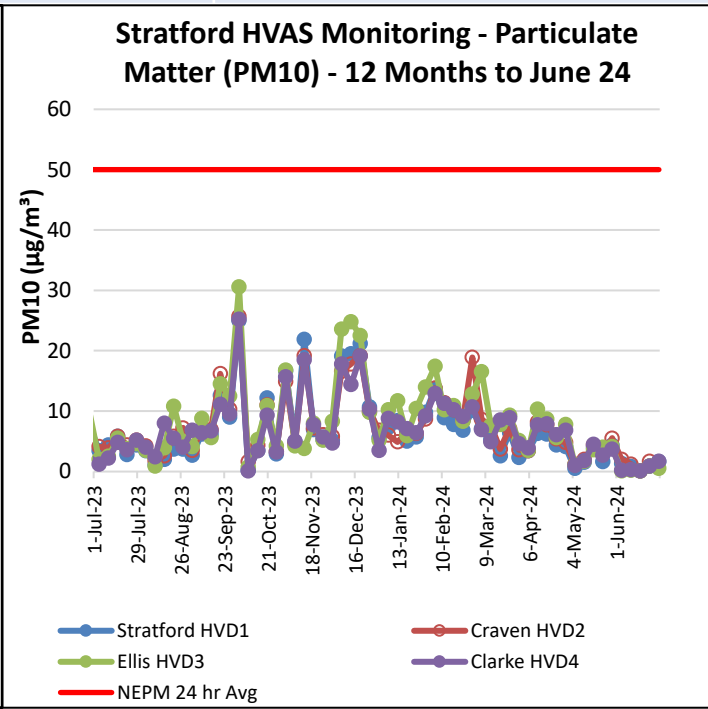
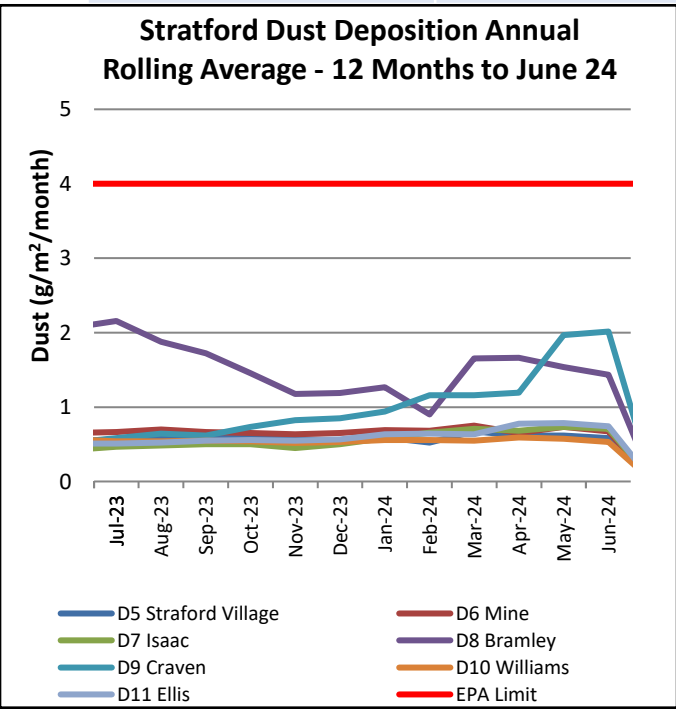
# 3. Environmental Management Plans & Monitoring

- a) Air Quality Management
- b) Blast Management
- c) Noise Management
- d) Water Management
- e) Rehabilitation Management
- f) Biodiversity Management
- g) Mine Closure Planning



# 3a. Air Quality Management

Management Area	Project	Status
<b>Air Quality Monitoring</b>	<ul style="list-style-type: none"> <li>Real-time air quality monitoring</li> </ul>	<ul style="list-style-type: none"> <li>The real-time air quality TEOM monitors in Stratford and Craven villages continue to operate.</li> <li>Generally good overall air quality. All sites below DPIE limit. Air quality results lower during months with higher rainfall.</li> <li>HVAS results provide more reliable data compared to dust deposition results and should be referred to when interpreting dust emissions.</li> <li>The real-time air quality management system analyses data from the TEOM units and records times when the air quality criteria is likely to be exceeded. The system will then provide alarms to staff to implement additional dust mitigation measures where required.</li> <li>No triggers have been received relating to mining operations.</li> </ul>





# 3b. Blast Management

Management Area	Project	Status
Blasting	<ul style="list-style-type: none"> <li>Blast Monitoring</li> </ul>	<ul style="list-style-type: none"> <li>Blasting activities ceased in Avon North Pit. Final blast 2<sup>nd</sup> May 2024.</li> <li>For the current annual reporting period there have been no blast exceedances (<i>No more than 5% of total blasts allowed to exceed the 115dbl</i>).</li> <li>No blasts have exceeded the 5mm/s during the quarter and annual reporting period to date.</li> </ul>

Date	Time	Isaac (B1) <u>7432</u>		Ex-Judge (B2) <u>7441</u>		Atkins (B6) <u>7434</u>		Greenwood <u>7422</u>		Clarke (B5) (Mine-owned) <u>7433</u> (previously 7377)		Overpressure Site Exceedance <sup>1</sup>	Ground Vibration Site Exceedance <sup>1</sup>	Monitored Blasts <sup>1</sup>
		mm/s	dBL	mm/s	dBL	mm/s	dBL	mm/s	dBL	mm/s	dBL			
	24hr													
Tuesday, 9 April 2024	12:38:13	<0.24	<114	<0.24	<114	<0.24	<114	<0.24	<114	1.78	99.0	0.00%	0.0%	38
Wednesday, 17 April 2024	12:35:56	<0.24	<114	<0.24	<114	<0.24	<114	<0.24	<114	2.88	94.3	0.00%	0.0%	39
Tuesday, 23 April 2024	13:25:15	<0.24	<114	<0.24	<114	<0.24	<114	<0.24	<114	0.55	93.0	0.00%	0.0%	40
Thursday, 2 May 2024	12:27:30	<0.24	<114	<0.24	<114	0.32	94.2	<0.24	<114	0.75	95.5	0.00%	0.0%	41

- Note: Blast Compliance: No more than 5% of total blasts for annual monitoring period to exceed an overpressure of 115 dBL or ground vibration of 5 mm/s. No blast is to exceed an overpressure of 120 dBL or ground vibration of 10 mm/s.
- Note: Where no trigger is recorded the results indicate <0.22mm/s and <110.0dBL corresponding to the blast monitor settings.
- Note: Blast results for Clarke are extrapolated to the next nearest non-mined owned residence.

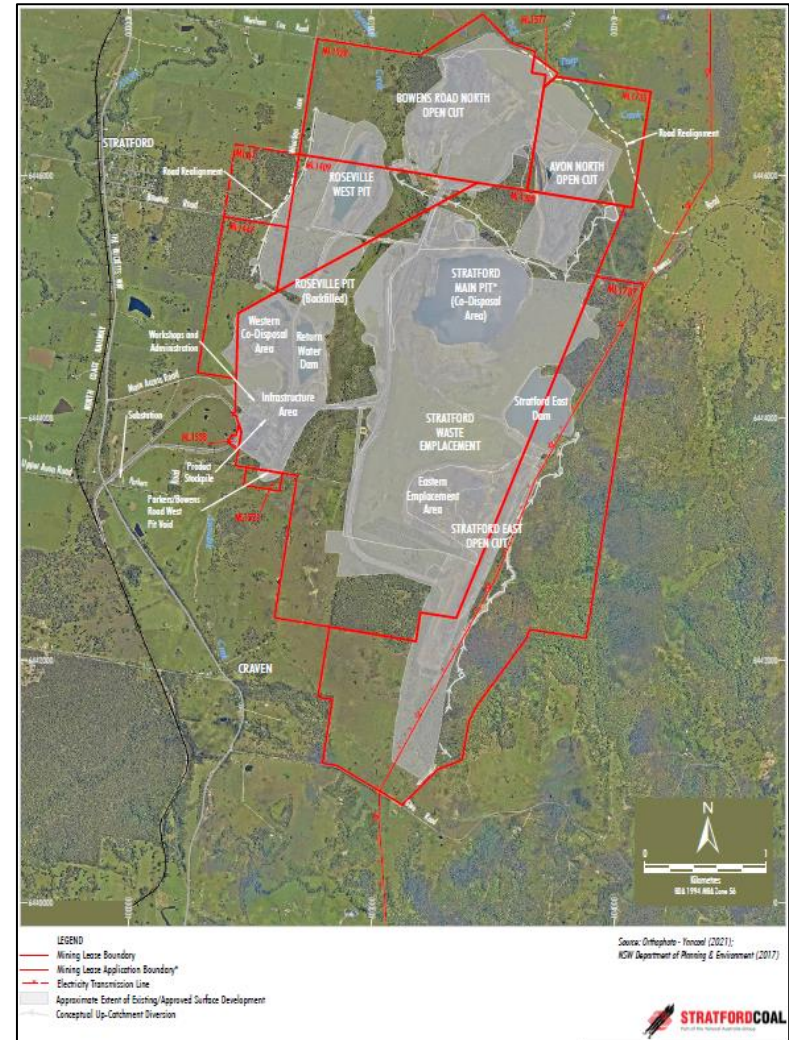


# 3c. Noise Management

Management Area	Project	Status
<b>Monitoring</b>	<ul style="list-style-type: none"> <li>Monthly Noise Survey</li> </ul>	<ul style="list-style-type: none"> <li>Three monthly attended noise monitoring rounds were undertaken during Q2.</li> <li>No non-compliant results were recorded during the surveys. April and May reports are available on the Stratford Coal website.</li> <li>The next monitoring is scheduled for August 2024.</li> </ul>
<b>Real-Time Noise</b>	<ul style="list-style-type: none"> <li>Real-Time Noise System</li> <li>Noise forecast reports</li> </ul>	<ul style="list-style-type: none"> <li>Real-time noise monitors continue to operate near Stratford Village and Craven Village.</li> <li>The integrated real-time noise management analyses data from the noise units, the weather station and the inversion towers and records times when either the noise criteria is likely to be exceeded or when noise enhancing weather conditions are present. The system provides alarms to staff to implement additional noise mitigation measures where required.</li> <li>Daily predicted noise and dust forecast reports are generated and are issued to the mining supervisors prior to each shift.</li> </ul>

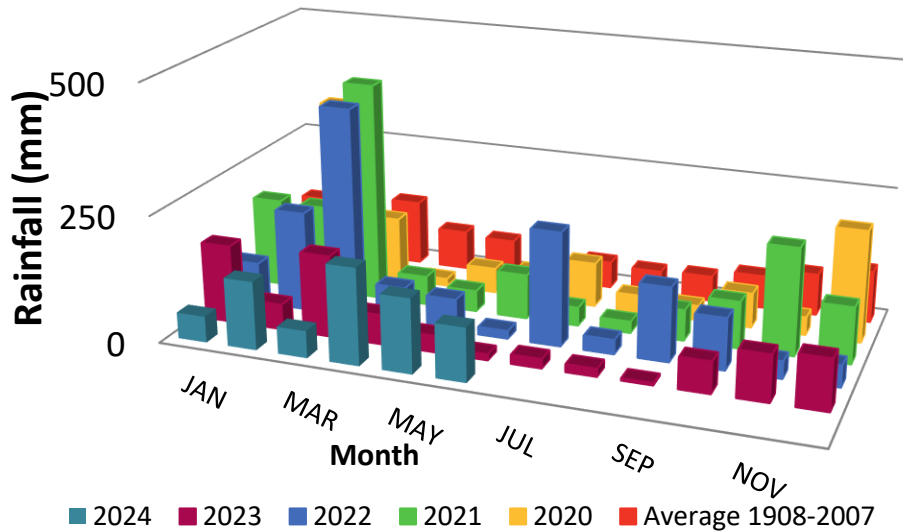
# 3d. Water Management

Management Area	Project	Status
<b>Water Management</b>	<ul style="list-style-type: none"> <li>Avon North and Stratford East Pumping</li> </ul>	<ul style="list-style-type: none"> <li>Dewatering of Stratford East has commenced.</li> <li>Water transfer from OMP to Avon North commenced in 2024</li> </ul>
<b>Surface Water Monitoring</b>	<ul style="list-style-type: none"> <li>Routine monitoring</li> </ul>	<ul style="list-style-type: none"> <li>Routine water sampling continued.</li> <li>All results consistent with the SMC Environmental Assessment predictions.</li> <li>Above average rainfall was received during Q2 2024.</li> </ul>

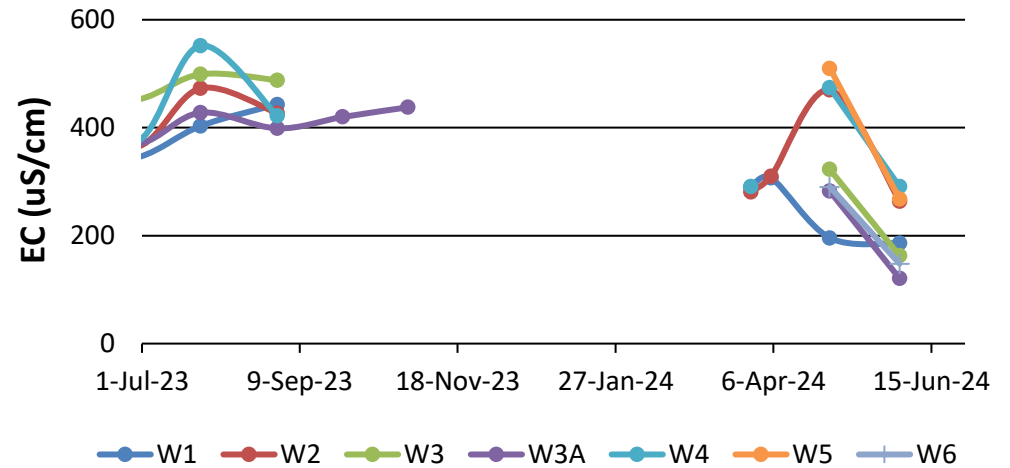


# 3d. Water Management

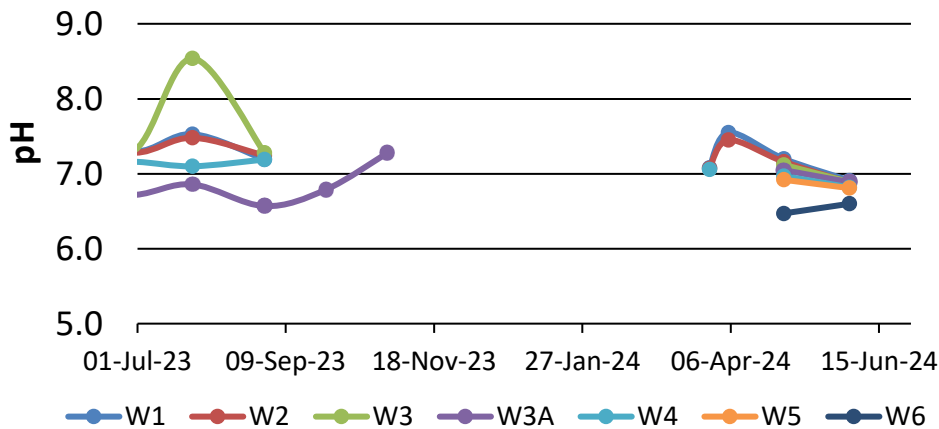
**Stratford Mining Complex - Monthly Rainfall**



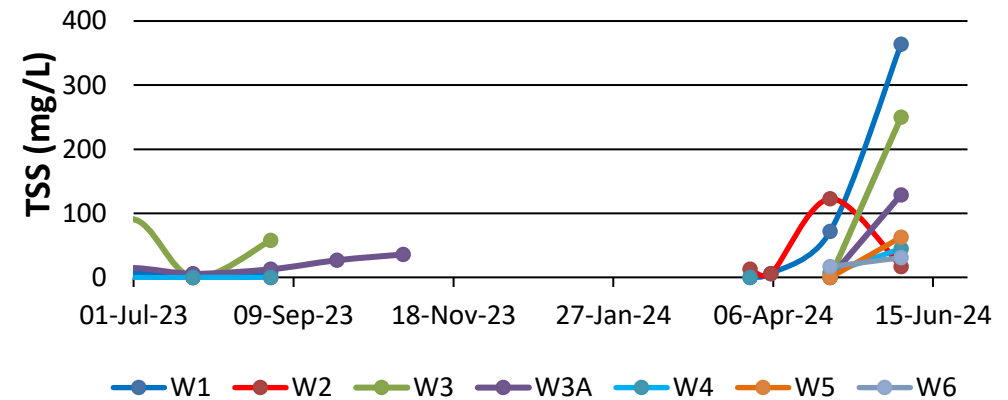
**Electrical Conductivity (EC) - Avon River & Avondale Creek July 2023 to June 2024**



**pH - Avon River & Avondale Creek July 2023 to June 2024**



**Total Suspended Solids (mg/L) - Avon River & Avondale Creek July 2023 to June 2024**



\*No results when sampling location is dry/not flowing.

# 3f. Rehabilitation and Biodiversity Management

Management Area	Project	Status
<b>Rehabilitated Waste Emplacements</b>	<ul style="list-style-type: none"> <li>• Backfilling and bulk-shaping</li> <li>• Maintenance</li> </ul>	<ul style="list-style-type: none"> <li>• Backfilling in Roseville West Pit and Bowens Road North has continued in Q2 2024.</li> <li>• Rehabilitated pasture has been used for grazing over the quarter.</li> </ul>
<b>Monitoring</b>	<ul style="list-style-type: none"> <li>• Vegetation Monitoring - Ecosystem Function Analysis</li> </ul>	<ul style="list-style-type: none"> <li>• Rehabilitation monitoring incorporating landscape function analysis and vegetation dynamics was completed in July 2024. A summary of the results will be included in the 2024 Annual Review.</li> </ul>
<b>Biodiversity Project Works</b>	<ul style="list-style-type: none"> <li>• Fencing</li> <li>• Weed management</li> </ul>	<ul style="list-style-type: none"> <li>• Fencing review and works planning commenced in June 2024</li> <li>• Manual weed removal work commenced following the completion of the 23/24 Weed spaying program</li> </ul>
<b>Biodiversity Offset Area</b>	<ul style="list-style-type: none"> <li>• Revegetation Planning</li> <li>• Revegetation Works</li> </ul>	<ul style="list-style-type: none"> <li>• Three-year revegetation planting and infill plan has been completed.</li> <li>• Approximately 3000 plants are to be planted into four areas in May 2024 to complete revegetation in the Biodiversity Offsets and Biodiversity Enhancement Areas.</li> </ul>
<b>Weed Control</b>	<ul style="list-style-type: none"> <li>• 2023/24 SMC Weed Control Program</li> </ul>	<ul style="list-style-type: none"> <li>• 2023/24 Biodiversity Offset Weed Control Program continued to target areas including Biodiversity offset areas, SMC operational areas and minor agricultural areas targeting Blackberry, Crofton weed, Tobacco bush, Privet and Lantana.</li> <li>• Comprehensive weed mapping and construction of targeted action plan has been completed in the SMC Biodiversity Offset Areas</li> </ul>

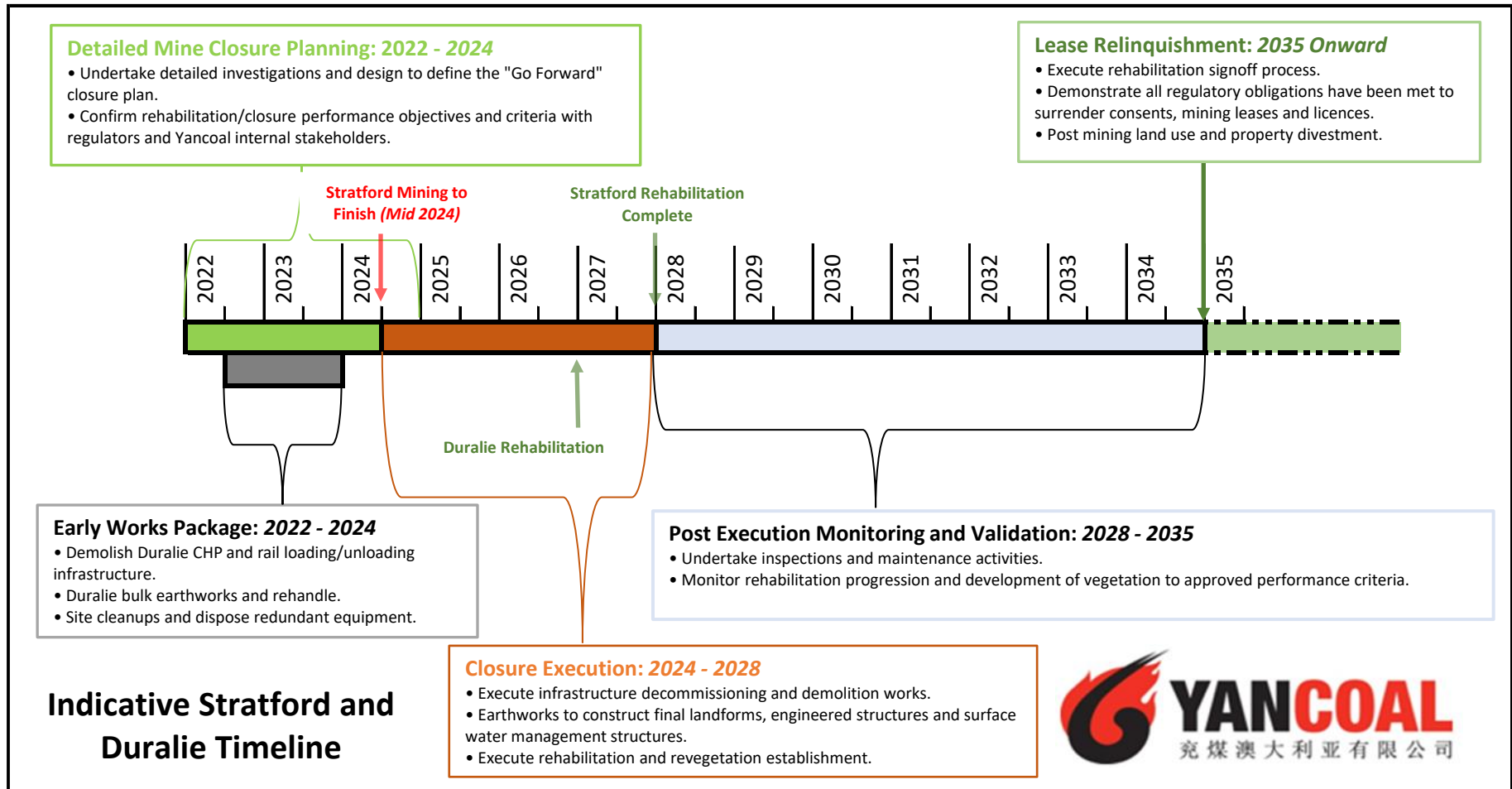
# 4. Mine Closure – General Information

## Mine Closure Progress

- Detailed Mine Closure Studies - Expected completion in second half of 2024.
- Final Landform Rehabilitation Plan - Update following internal Detailed Mine Closure Plan.
- Detailed Mine Closure Plan will inform closure execution works.
- Ongoing bulk earthworks and rehabilitation activities following the completion of coal mining are planned until approximately 2028.

Consent (SSD\_4966) and Mining Leases continue to be in force until the site is rehabilitated to the satisfaction of DPHI and Resources Regulator.

# 4. Detailed Mine Closure Planning – Timeline



# 4. Mine Closure – Transition to Closure

## Focus for Rest of 2024

- Detailed Mine Closure Studies then Revise Final Landform Rehabilitation Plan
- Rehandling and reshaping BRN and Roseville West
  - Excavator, supported by trucks and dozers.
  - Expected to take until approximately end of 2027.
  - Bulk water transfer to dewater Stratford East Pit.
- Rehabilitation
  - Progressive rehabilitation as areas become available.
- CHPP
  - Decommissioning and power/services augmentation works.
  - Currently for sale.
- Other
  - Augmentation design and construction works to enable decommissioning works.
  - Preparing to dewater Return Water Dam



# 4. Mine Closure Planning

Aspect	Status
<b>General</b>	<ul style="list-style-type: none"><li>• Detailed Mine Closure studies currently expected to be completed in the second half of 2024.</li><li>• On-going iterations to optimise landform outcomes.</li></ul>
<b>Rehabilitation</b>	<ul style="list-style-type: none"><li>• Final Landform and Rehabilitation Plans (FLRP) will be revised following completion of Detailed Mine Closure Plan.</li><li>• Yancoal and the Resources Regulator acknowledge that the currently proposed landforms may change as the closure planning evolves.</li></ul>
<b>Environmental Management, Monitoring &amp; Maintenance</b>	<ul style="list-style-type: none"><li>• EMPs will be progressively reviewed and updated to reflect the stage of operations and closure works.</li><li>• EMPs will identify post-closure environmental monitoring and maintenance requirements.</li></ul>
<b>Stakeholder and Community</b>	<ul style="list-style-type: none"><li>• Communications with the workforce, CCC and other stakeholders will continue throughout closure.</li><li>• Closure updates to the CCC will continue to be provided.</li><li>• Community Support Program to prioritise community socio-economic transition projects.</li></ul>

# 4. Mine Closure Planning

Aspect	Status
<b>Final land use</b>	<ul style="list-style-type: none"> <li>• The target post-mining land uses are agricultural grazing, native vegetation and water bodies.</li> <li>• Land uses are shown and defined in the RMP.</li> </ul>
<b>Final Landforms</b>	<ul style="list-style-type: none"> <li>• Landform refinements are continuing as part of the on-going mine closure planning.</li> <li>• Refinements are iterative, consider mine planning, landform stability, landscape evolution modelling, geochemistry and water management.</li> <li>• Final Landform Design revisions will be included in future FLRP revisions.</li> </ul>
<b>Final Voids</b>	<ul style="list-style-type: none"> <li>• Final void design detailed refinements are continuing.</li> <li>• Void water modelling iterations are being undertaken considering external drainage, landform refinements and groundwater predictions.</li> </ul>
<b>Water</b>	<ul style="list-style-type: none"> <li>• Water management and predictive water balance modelling is progressively being revised for rehabilitation and post rehabilitation phases.</li> <li>• Considerations include water storages, water diversions, drainage construction, rehabilitation sequencing and erosion and sediment control.</li> <li>• Water infrastructure design work is continuing (bunds, drains and sediment dams etc).</li> </ul>
<b>Infrastructure</b>	<ul style="list-style-type: none"> <li>• Options for sale, reuse and recycling of resources and infrastructure are being investigated.</li> <li>• Staged decommissioning and demolition planning is in progress.</li> <li>• Infrastructure will be progressively decommissioned where not required to support closure works.</li> <li>• Infrastructure to be retained will be subject to approval by the Resources Regulator.</li> </ul>

# 4. Community Complaints - Summary

Period: 1/5/24 – 1/08/24

Period: 3 Months

Total No. of Complaints: 2

Total No. of Complainants: 2

Date/Time of Complaint	Complainant Location	Method of Complaint	Nature of Complaint	Investigation/Outcome
22/05/24 14:00	Approx. 3.8 km north of operations	Complaints Line.	Noise	<ul style="list-style-type: none"> <li>Complainant called the Stratford Coal complaint hotline at 2:00 PM on the 22/05/2024.</li> <li>The Community Liaison Advisor (CLA) returned the call at 3:57 PM on 22/05/2024. Complainant stated that there has been consistent humming noise over the last few days, and he couldn't sleep due to the noise at night, and it continued into the day.</li> <li>CLA explained the recent change in operations at site and machinery now working at higher elevations.</li> <li>Weather conditions: Light wind conditions from the south at the time of the complaint. Inversion present from 5:30 PM 19/5/2024 to 9:45 AM on the 20/05/2024.</li> <li>Comments from Mining Superintendent: EX06 has been working in the Roseville West Pit area, double benching. Dozers in 1st gear after 10pm. limiting noise with hornless systems in trucks and reverse quackers. Higher bunding is being left in areas, where possible, to help with noise mitigation measures.</li> <li>CLA contacted complainant to confirm times/dates of the noise complaint.</li> <li>Complainant stated he was fairly certain that the noise was on Sunday night/ Monday morning but could have been Monday night/ Tuesday morning. CLA informed complainant there was a strong inversion present from 5:30 PM on Sunday. Complainant was informed of the hours of operation at SMC and that no operations were undertaken on the Sunday night. Complainant was pleased with the update and stated it may well have been one of the surrounding farmers on the Sunday night.</li> </ul>
25/06/24 12:00	Approx. 2.5km west of Operations	In person	Noise	<ul style="list-style-type: none"> <li>Complainant contacted SMC Environment &amp; Community Superintendent (ECS) at 11:55AM 25/6/2024.</li> <li>The Complainant stated the excavator noise coming the general direction of the mine was a lot louder than it had been previously and was intrusive. The complainant highlighted that the noise was bad on the evening of 20/6/2024 and the morning of 24/6/2024.</li> <li>ECS explained the recent changes to the operations on site and explained the current and short term work plan involving Roseville West and BRN rehandle works.</li> <li>The complainant continued that the noise was continuous loud noises that sounded like rocks being picked up by the excavator bucket followed by a loud noise that sounded like rocks hitting the floor of a haul truck body. The complainant also noted that the recent changes to the operational areas were consistent with the changes in noise levels received at their residence.</li> <li>ECS stated that the SMC will continue to minimise loading noise on site and mitigate potential noise levels where possible and will communicate the complaint to the mining team.</li> </ul>



# 6. Community Programs

Management Area	Project	Status
Support Programs	Stratford Coal Community Support Program (CSP)	<ul style="list-style-type: none"> <li>• Applications for the 2025 Community Support Program will re-open on <b>19th August 2024</b>.</li> <li>• The CCC, previous applicants and the wider community will be notified via Email, social media, newsletters and community notice boards.</li> <li>• The CSP guidelines have been updated to prioritise projects that support the community's socio-economic transition.</li> </ul>
	Stratford Coal Education Support Fund	<ul style="list-style-type: none"> <li>• The Stratford Coal Education Support Fund will be running again during 2024, applications are available from Gloucester High School or the MidCoast Council Gloucester office.</li> <li>• Applications will open in December 2024 and close on 31 January 2025.</li> </ul>



## NEED FUNDING TO HELP IMPROVE OUR LOCAL COMMUNITY?

### Yancoal Community Support Program call for applications

Stratford Duralie Coal Mine is a proud and active member of the Local community. Yancoal's 2025 Community Support Program offers community groups the opportunity to apply for funding to support projects, events and initiatives that help make a genuine positive difference to Gloucester, Stroud and District.

If you have a project or idea with the potential to benefit others across the areas of health, community, environment, arts, culture, education or training, please visit: [www.stratfordcoal.com.au](http://www.stratfordcoal.com.au) or [www.duraliecoal.com.au](http://www.duraliecoal.com.au)

Applications close  
on 27th September 2024



# Stratford Renewable Energy Hub (SREH) - Update

- On 28 June 2024, the Stratford Renewable Energy Hub (SREH) was declared Critical State Significant Infrastructure (CSSI) by the NSW Government
- This recognises that the Project is “essential to NSW for economic, social and environmental reasons” and “will help maintain the state’s critical energy security and continue the essential energy supply to homes and businesses during peak-demands periods as coal fired sources close.”



# Stratford Renewable Energy Hub (SREH) - Update

- Yancoal is now awaiting revised Secretary's Environmental Assessment Requirements (SEARs) to reflect this new infrastructure approval pathway (Part 5 of the *Environmental Planning and Assessment Act 1979*).
- The Environmental Impact Assessment (EIS) is currently being finalised and Yancoal is aiming to lodge the EIS shortly after the SEARs are re-issued.
- Yancoal is preparing a wider stakeholder engagement campaign (including newsletters and community information sessions) to coincide with this lodgement and public exhibition of the EIS.

