

# Stratford Coal CCC Meeting

Presentation –  
Company Report &  
Overview of Activities

August 2022

Thomas Kirkwood  
Senior Environment & Community Advisor

# Table of Contents

1. Agenda Item 7a (Progress at the Mine)
2. Agenda Item 7b (Environmental Reporting)
3. Agenda Item 7c (Environmental Management Plans and Monitoring)
4. Agenda Item 7d (Community Complaints)
5. Agenda Item 7e (Community Programs)

# 1. Progress at the Mine

## Mining 2<sup>nd</sup> Quarter 2022

	Total Waste (BCM)	ROM (T)	Product Coking (T)	Product Thermal (T)
Q2 2022	1,340,630	195,243	51,406	81,901

- Mining in Avon North continued during the quarter. Day and evening shift.
- Mining in Stratford East Pit continued during the quarter. Day and evening shift.
- Minor BRN backfilling has continued during the quarter.
- Backfilling of Roseville West Pit commenced in April 2022 with most waste taken to this pit.

# 2. Environmental Reporting & Regulators

Management Area	Project	Status
Reporting	<ul style="list-style-type: none"> <li>Stratford Mining Complex Annual Review 2021</li> <li>Stratford Mining Complex Annual Biodiversity Report 2021</li> </ul>	<ul style="list-style-type: none"> <li>The Stratford Mining Complex 2021 Annual Review has been accepted by the DPIE in May 2022. The Annual Review 2021 has been distributed to the CCC members and is also available on the Stratford Coal website.</li> <li>The Stratford Mining Complex 2021 Annual Biodiversity has been completed. The Annual Biodiversity Report 2021 is included in the 2021 Annual Review and is also available on the Stratford Coal website.</li> </ul>
Regulator	<ul style="list-style-type: none"> <li>Resources Regulator Rehabilitation Reform</li> <li>Rehabilitation Management Plan</li> <li>Environmental Management Plans</li> </ul>	<ul style="list-style-type: none"> <li>Stratford has prepared and submitted a new Rehabilitation Management Plan and Mine Closure Plan to the Resource Regulator to comply with the Resource Regulators new planning and reporting standards.</li> <li>The Stratford Rehabilitation Management Plan reflects the proposed mining and rehabilitation activities associated with the Stratford Mining Complex. The new RMP is available on the Stratford Coal website.</li> <li>SCPL has prepared revisions of the Stratford Environmental Management Plans to reflect the current status of the SMC.</li> <li>The revised plans have been progressively submitted to DPIE for approval and approved plans have been made publicly available on the Stratford Coal Website.</li> </ul>

# 3. Environmental Management Plans & Monitoring

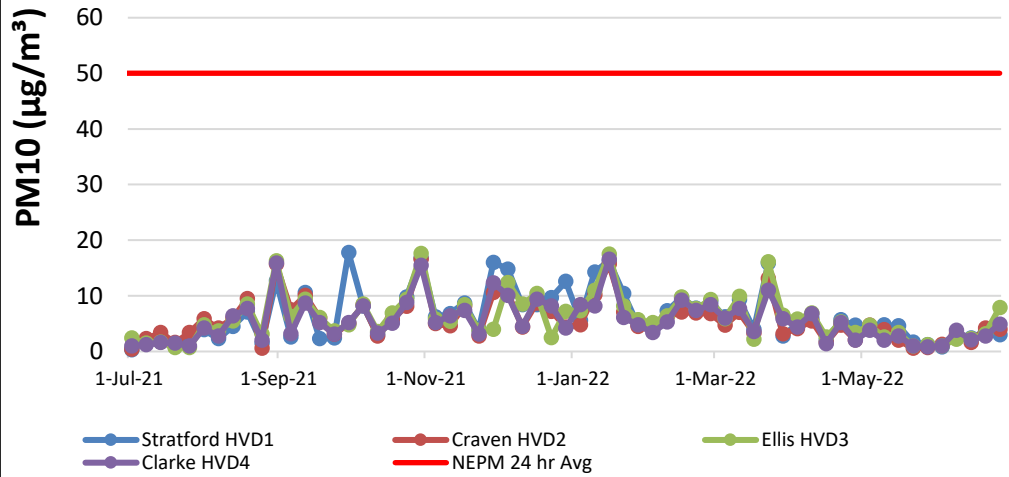
- a) Air Quality Management
- b) Blast Management
- c) Noise Management
- d) Water Management
- e) Rehabilitation Management
- f) Biodiversity Management
- g) Mine Closure Planning

# 3a. Air Quality Management

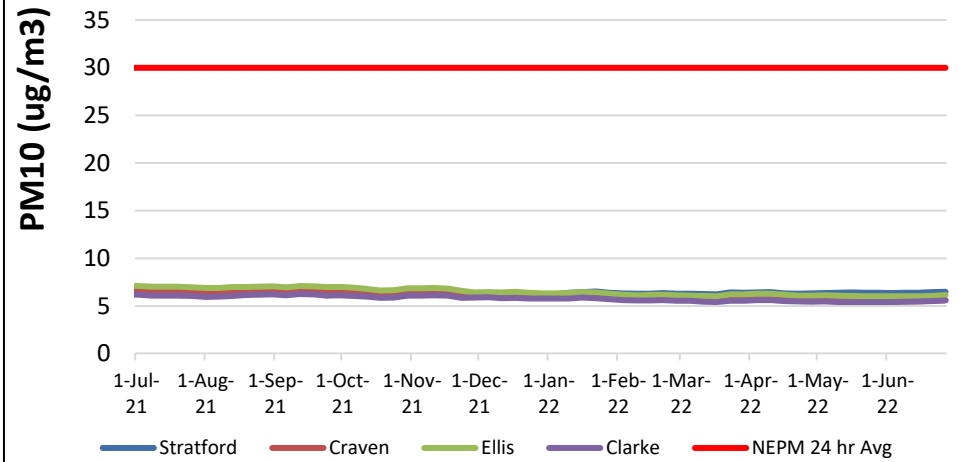
Management Area	Project	Status
Air quality monitoring	<ul style="list-style-type: none"><li>Real-time air quality monitoring</li></ul>	<ul style="list-style-type: none"><li>The real-time air quality TEOM monitors in Stratford and Craven villages continue to operate.</li><li>General ambient PM10 dust levels have been very low throughout Autumn/Winter due to increased rainfall.</li><li>The real-time air quality management system analyses monitoring data from the TEOM units and records times when the air quality criteria is likely to be exceeded. The system will then provide alarms to staff to implement additional dust mitigation measures where required.</li><li>No triggers have been received relating to mining operations.</li></ul>

# 3a. Air Quality Management

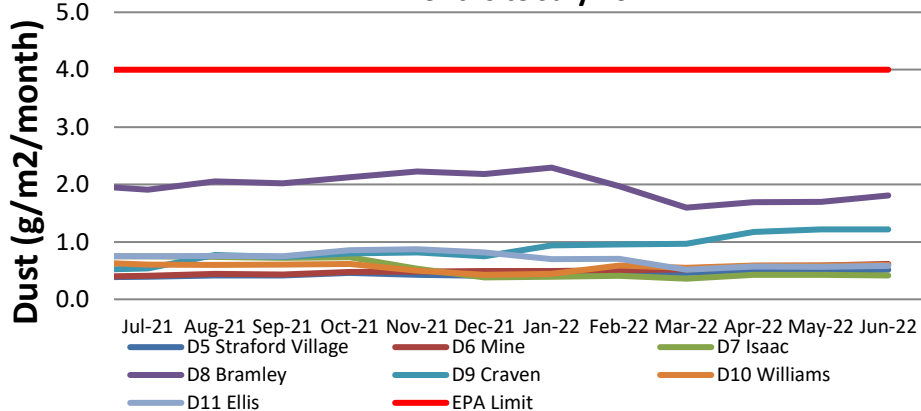
**Stratford HVAS Monitoring - Particulate Matter (PM10) - 12 Months to July 2022**



**Stratford HVAS Monitoring (PM10) Annual Rolling Average - 12 Months to July 2022**



**Stratford Dust Deposition - Annual Rolling Average 12 Months to July 2022**



- Generally good overall air quality.
- All sites below DPIE limit. Air quality results lower during months with higher rainfall.
- Consistent air quality results with minor elevation seen in HVAS results on hot and windy days.
- HVAS results provide more reliable data compared to dust deposition results and should be referred to when interpreting dust emissions.

# 3b. Blast Management

Management Area	Project	Status
Blasting	<ul style="list-style-type: none"><li>• Blast Monitoring</li><li>• Blast Results</li></ul>	<ul style="list-style-type: none"><li>• Blasting activities continued in Avon North and Stratford East open cuts.</li><li>• For the current annual reporting period no blasts have exceeded 115dB(L) (<i>No more than 5% of total blasts allowed to exceed the 115dbl</i>).</li><li>• No blasts exceeded the 5mm/s during the quarter. For the annual reporting period no blasts have exceed 5mm/s.</li></ul>
	<ul style="list-style-type: none"><li>• Blasting Preparations</li></ul>	<ul style="list-style-type: none"><li>• Blast notifications have continued.</li><li>• Additional recipients have been added to the notification list on request.</li><li>• Blasting in Avon North currently. No blasts are expected in Stratford East in Q3.</li></ul>
Building Inspections	<ul style="list-style-type: none"><li>• Baseline condition inspections</li></ul>	<ul style="list-style-type: none"><li>• None requested</li></ul>



# 3b. Blast Management

Shot #	Location	Date	Time	Isaac (B1) 7432		Ex-Judge (B2) 7441		Atkins (B6) 7434		Greenwood 7422		Clarke (B5) (Mine-owned) 7433 (previously 7377)		Overpre ssure Site Exceed ance <sup>1</sup>	Ground Vibratio n Site Exceed ance <sup>1</sup>	Monitor ed Blasts <sup>1</sup>
				mm/s	dBL	mm/s	dBL	mm/s	dBL	mm/s	dBL	mm/s	dBL	mm/s	dBL	
			24hr													
AN250	Avon North	Friday, 6 May 2022	12:43:00	0.34	89.6	<0.24	<114	<0.24	<114	<0.24	<114	2.10	112.1	1.82%	0.0%	55
AN251	Avon North	Thursday, 19 May 2022	12:50:37	0.29	87.1	0.25	84.2	<0.24	<114	<0.24	<114	1.82	116.6	1.79%	0.0%	56
STR098	Stratford East	Wednesday, 25 May 2022	12:29:00	<0.24	<114	<0.24	<114	<0.24	<114	<0.24	<114	<0.24	<114	1.75%	0.0%	57
AN253	Avon North	Friday, 27 May 2022	12:34:00	0.39	83.6	<0.24	<114	<0.24	<114	<0.24	<114	2.96	118.6	1.72%	0.0%	58
AN248	Avon North	Monday, 30 May 2022	13:04:00	0.24	89.6	<0.24	<114	0.32	99.0	<0.24	<114	1.23	111.1	1.69%	0.0%	59
STR097	Stratford East	Friday, 3 June 2022	9:07:00	0.37	83.6	0.28	80.7	<0.24	<114	0.87	112.7	0.57	84.8	1.67%	0.0%	60
AN255	Avon North	Monday, 6 June 2022	12:39:00	<0.24	<114	<0.24	<114	<0.24	<114	<0.24	<114	0.49	104.8	1.64%	0.0%	61
STR099	Stratford East	Tuesday, 14 June 2022	12:38:00	<0.24	<114	0.27	84.2	<0.24	<114	1.31	109.9	0.43	81.2	1.61%	0.0%	62
AN257	Avon North	Friday, 17 June 2022	12:41:00	0.31	87.1	0.33	80.7	0.28	102.2	<0.24	<114	0.71	114.4	1.59%	0.0%	63
STR101	Stratford East	Tuesday, 21 June 2022	12:34:00	<0.24	<114	<0.24	<114	<0.24	<114	0.47	108.4	0.32	81.2	1.56%	0.0%	64
AN259	Avon North	Friday, 24 June 2022	12:44:00	0.32	83.6	0.30	80.7	0.33	113.6	<0.24	<114	2.32	115.0	1.54%	0.0%	65
AN254	Avon North	Friday, 1 July 2022	12:46:00	0.35	83.6	0.31	84.2	0.33	113.6	<0.24	<114	1.35	116.2	1.52%	0.0%	1
AN263	Avon North	Wednesday, 13 July 2022	12:43:00	0.24	91.5	<0.24	<114	<0.24	<114	<0.24	<114	0.76	119.0	0.00%	0.0%	2
AN265	Avon North	Wednesday, 27 July 2022	13:42:00	0.24	91.5	<0.24	<114	<0.24	<114	<0.24	<114	1.39	112.6	0.00%	0.0%	3
AN270 AN269	Avon North	Thursday, 28 July 2022	12:41:00	<0.24	<114	<0.24	<114	<0.24	<114	<0.24	<114	<0.24	<114	0.00%	0.0%	4

- Note: Blast Compliance: No more than 5% of total blasts for annual monitoring period to exceed an overpressure of 115 dBL or ground vibration of 5 mm/s. No blast is to exceed an overpressure of 120 dBL or ground vibration of 10 mm/s.
- Note: Where no trigger is recorded the results indicate <0.22mm/s and <110.0dBL corresponding to the blast monitor settings.
- Note: Blast results for Clarke are extrapolated to the next nearest non-mined owned residence.

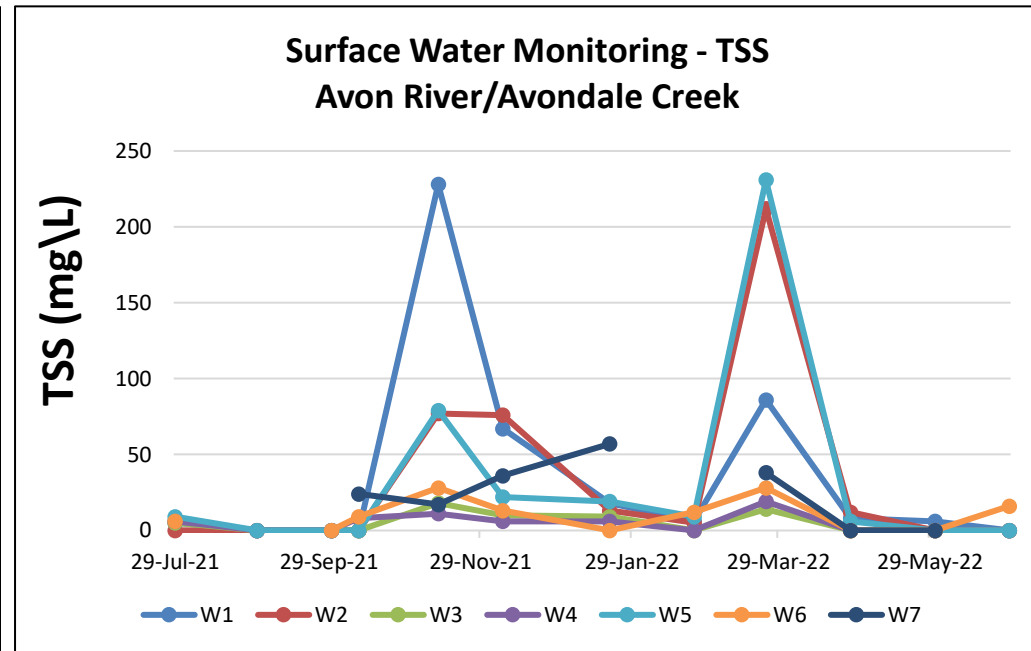
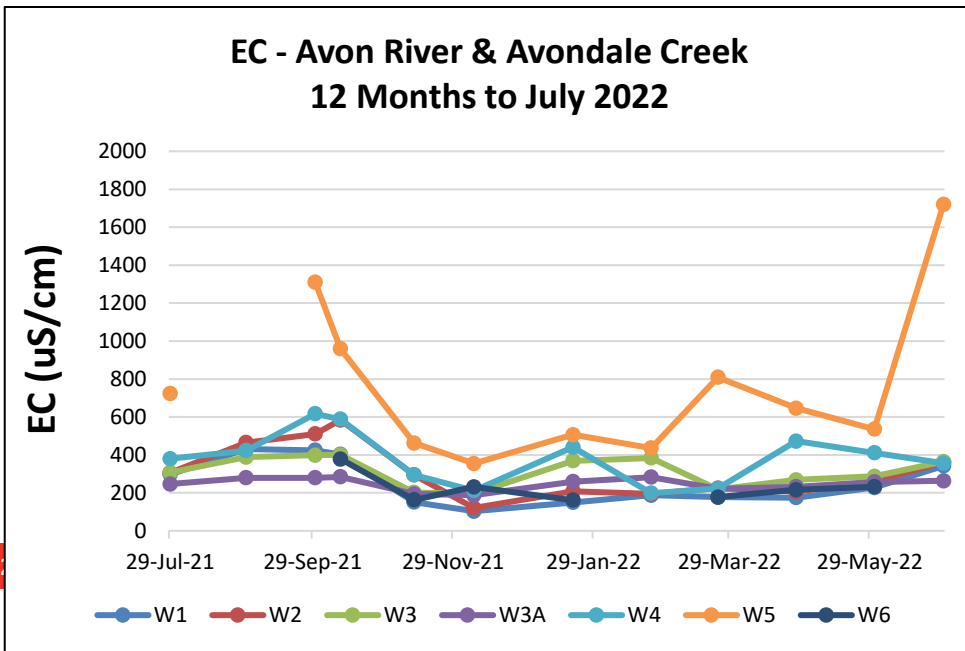
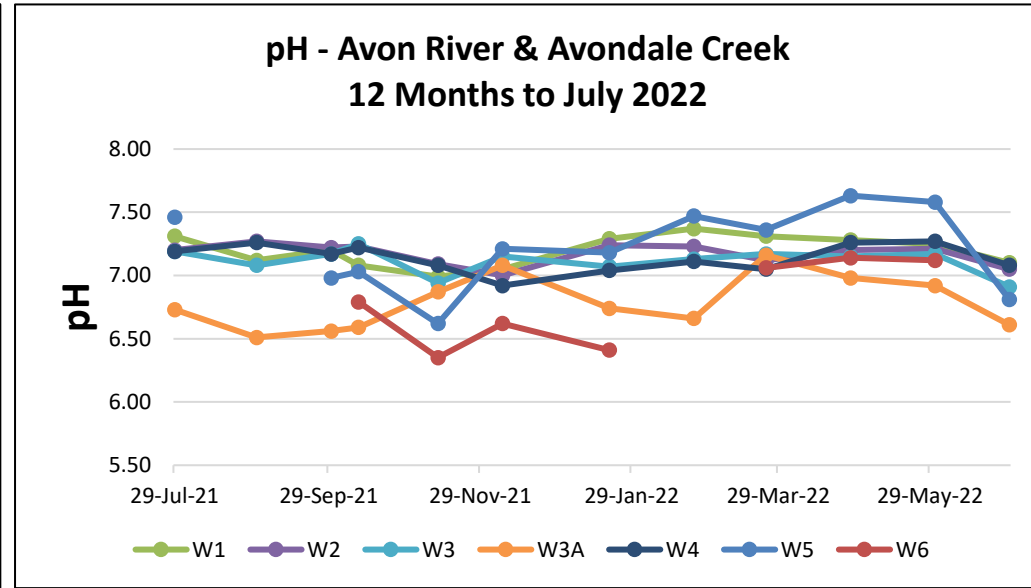
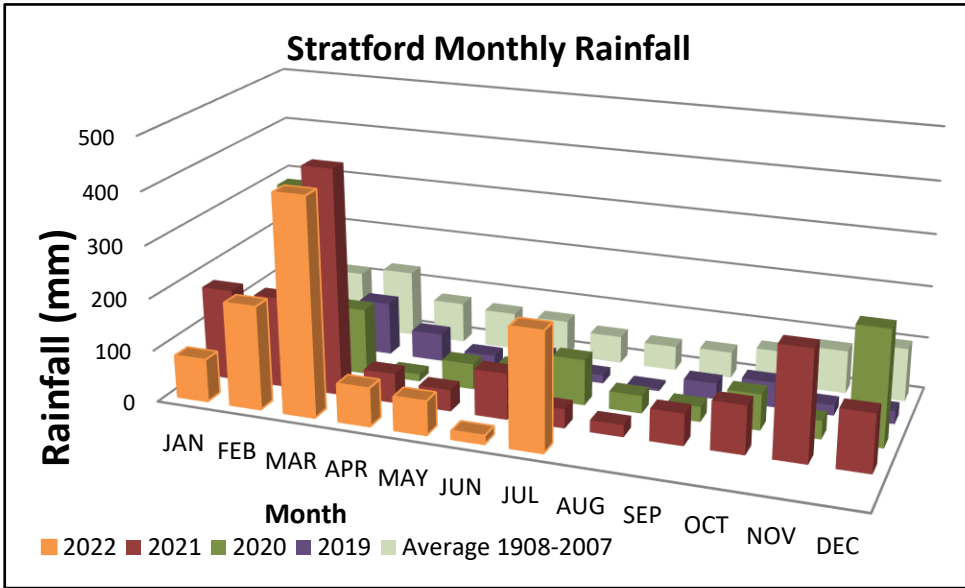
# 3c. Noise Management

Management Area	Project	Status
Monitoring	<ul style="list-style-type: none"><li>Monthly Noise Survey</li></ul>	<ul style="list-style-type: none"><li>Three monthly attended noise monitoring rounds were undertaken during Q2 2022.</li><li>No non-compliant results were recorded during the surveys. Reports have been made available on the Stratford Coal website.</li><li>The next monitoring is scheduled in August 2022</li></ul>
Real-Time Noise	<ul style="list-style-type: none"><li>Real-Time Noise System</li><li>Noise forecast reports.</li></ul>	<ul style="list-style-type: none"><li>Real-time noise monitors continue to operate near Stratford village and Craven Village.</li><li>The integrated real-time noise management system is operational. The system analyses monitoring data from the noise units, the weather station and the inversion towers and records times when either the noise criteria is likely to be exceeded or when noise enhancing weather conditions are present. The system will then provide alarms to staff to implement additional noise mitigation measures where required.</li><li>Daily predicted noise and dust forecast reports are generated and are issued to the mining supervisors prior to each shift.</li></ul>

# 3d. Water Management

Management Area	Project	Status
Site Water Management	<ul style="list-style-type: none"> <li>Annual water balance review</li> </ul>	<ul style="list-style-type: none"> <li>The 2021 annual site water balance has been prepared. A summary is included in the 2021 Annual Review and has been made available on the Stratford Coal website.</li> </ul>
Water Management Structures	<ul style="list-style-type: none"> <li>Avon N and Stratford East Clean Water Diversions</li> </ul>	<ul style="list-style-type: none"> <li>Ongoing inspections, monitoring and maintenance has been completed in Q2 2022.</li> </ul>
Surface Water Monitoring	<ul style="list-style-type: none"> <li>Routine monitoring</li> </ul>	<ul style="list-style-type: none"> <li>Routine water sampling continued.</li> <li>All results consistent with the SCM Environmental Assessment predictions.</li> <li>Average rainfall was received during Q2 2022.</li> <li>Elevated electrical conductivity results were observed at surface water monitoring point 5. Elevated levels deemed to be due to semi stagnation of the pools of water adjacent to the monitoring point.</li> </ul>
	<ul style="list-style-type: none"> <li>Macro-invertebrates</li> </ul>	<ul style="list-style-type: none"> <li>Macro-invertebrate monitoring is scheduled to commence in September 2022 and continues to show no identified impacts from the Stratford mining operations on aquatic ecosystems.</li> </ul>
Groundwater Monitoring	<ul style="list-style-type: none"> <li>Routine monitoring</li> </ul>	<ul style="list-style-type: none"> <li>Routine groundwater sampling continued. All results consistent with the SCM Environmental Assessment predictions.</li> </ul>

# 3d. Water Management



# 3e. Rehabilitation Management

Management Area	Project	Status
Rehabilitated Waste Emplacements	<ul style="list-style-type: none"> <li>BRN backfilling and bulk-shaping</li> <li>Rehabilitation Maintenance</li> </ul>	<ul style="list-style-type: none"> <li>Mining in the BRN pit was finalised in June 2021 and minor backfilling has continued to progress in Q2 2022.</li> <li>Bulk shaping with a D11 dozer is progressing to achieve the final landform design.</li> <li>Manual weed removal rescheduled to Q3 2022.</li> </ul>
	<ul style="list-style-type: none"> <li>Native rehabilitation infill planting.</li> </ul>	<ul style="list-style-type: none"> <li>Due to above average persistent rainfall, infill planting with tubestock in existing rehabilitation areas has been postponed until September 2022. Planting areas will include BRN Rehabilitation area, Roseville West Rehabilitation area and Stratford Main Pit Rehabilitation area.</li> </ul>
Monitoring	<ul style="list-style-type: none"> <li>Vegetation Monitoring - Ecosystem Function Analysis</li> </ul>	<ul style="list-style-type: none"> <li>Rehabilitation monitoring incorporating landscape function analysis and vegetation dynamics was completed in June 2022. The results will be included in the next Annual Review.</li> </ul>



# 3e. Biodiversity Management

Management Area	Project	Status
Biodiversity Offset Area	<ul style="list-style-type: none"> <li>Revegetation Planning</li> <li>Revegetation works</li> </ul>	<ul style="list-style-type: none"> <li>Due to above average persistent rainfall, Q2 planting program has been postponed until September 2022. Wet ground conditions have prevented adequate ground preparations.</li> <li>Planting areas will include offset properties near Woods Rd and Stratford Village. Additional plantings will be undertaken along Wenham Cox Rd, BRN Rehabilitation area, Roseville West Rehabilitation area and Stratford Main Pit Rehabilitation area.</li> <li>Ground preparations methodology trials have been completed in Q2.</li> <li>Tubestock currently being held by the nurseries over winter have maintained good health.</li> <li>Approximately 21,291 trees over 88.77 hectares will be planted.</li> </ul>



# 3e. Biodiversity Management

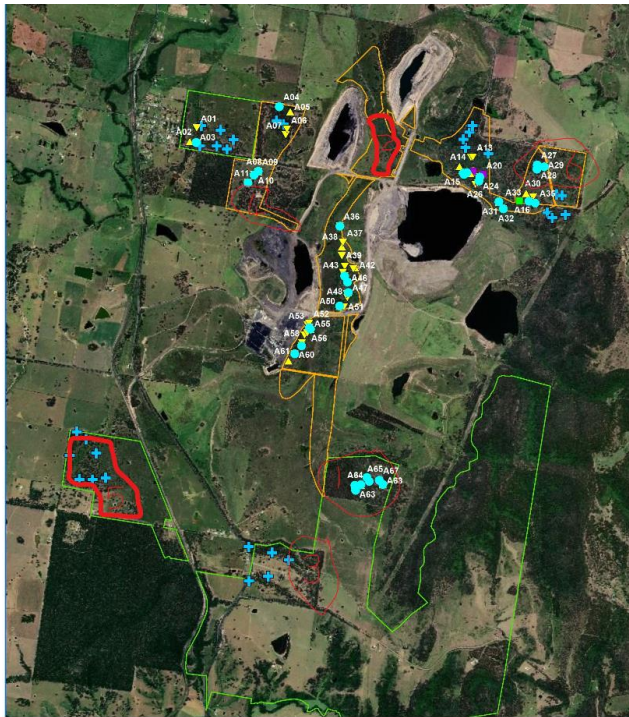
Management Area	Project	Status
Weed Control	<ul style="list-style-type: none"><li>• Weed spraying program</li></ul>	<ul style="list-style-type: none"><li>• Weed spraying has continued in the Stratford Biodiversity Area and Stratford Mining Lease areas throughout Q2 targeting Blackberry, Crofton weed, Tobacco bush, Privet and Lantana. The Cadaghi Tree has been included in target species.</li><li>• Weed spraying will recommence in Spring 2022.</li></ul>
Pest Control	<ul style="list-style-type: none"><li>• Wild Dog control program</li></ul>	<ul style="list-style-type: none"><li>• Wild dog and fox trapping is scheduled for October 2022, Trapping efforts will cover all Stratford Coal owned properties including biodiversity offsets and Mining Leases. Opportunistic surveillance and trapping was completed in June 2022. 2 wild dogs were captured as part of this program.</li></ul>



Photos: Cagaghi tree removal Q2 2022.

# 3f. Biodiversity Management

Management Area	Project	Status
Nest Box Program	<ul style="list-style-type: none"><li>Nest box Monitoring</li></ul>	<ul style="list-style-type: none"><li>Quarterly nest box monitoring was undertaken in December 2021, February-March 2022 and June 2022.</li><li>Quarterly monitoring has found 91% of nest boxes were either occupied or showing signs of occupancy after approximately 1 year of installation.</li><li>The Annual monitoring of all nest boxes is schedule to be undertaken in October 2022. A summary of the nest box progress will be included in the 2022 Annual Review.</li></ul>



Map: Current and proposed nest boxes in the Stratford Biodiversity Areas.



Photo: Squirrel Glider in nest box, March 2022.

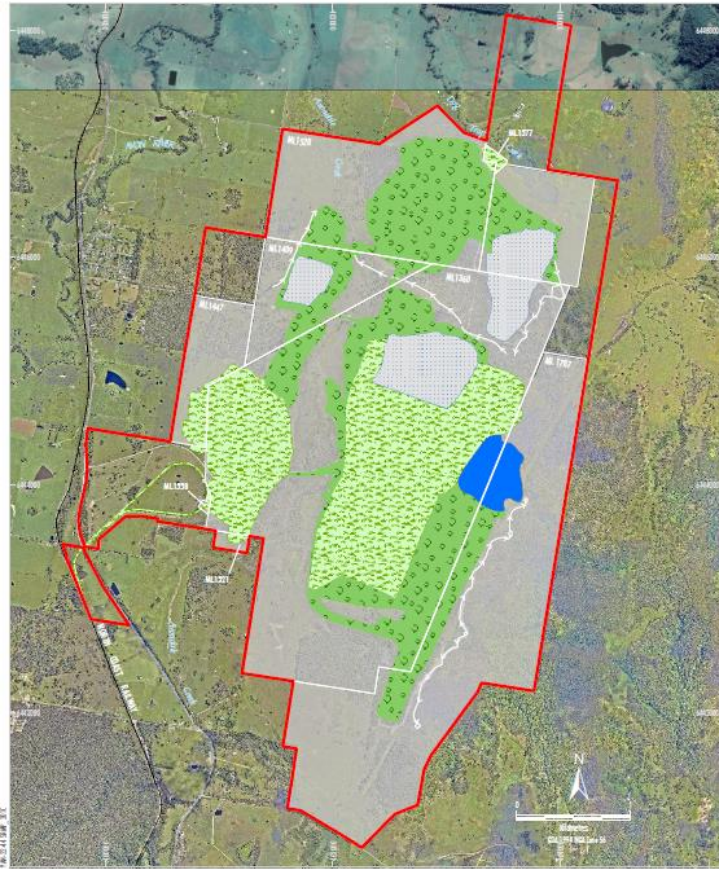


# 3g Mine Closure

## Mine Closure Progress

- Condition 5, Schedule 2 of the SMC's Development Consent (SSD\_4966) authorises mining operations to be carried at the SMC until 31 December 2025.
- Mining operations at Stratford are currently planned to be completed in approximately mid-2024 at which time the site will transition to closure.
- SSD\_4966 and the Mining Leases continue to be in force until SCPL rehabilitates the site in accordance with the conditions of the Approval and MLs to the satisfaction of DPIE and the Resources Regulator.
- New RMP/Closure Plans have been submitted to Resources Regulator prior to 1 August 2022.
- As the SMC progresses towards the end of its approved mine life, operations and activities at the SMC over the next four years will progressively change to reflect this.

# 3g Mine Closure



- LEGEND
- Project Approval Boundary\*
  - Coal - Current Titles
  - Final Land Use
  - Agricultural - Grazing
  - Final Void
  - Native Ecosystem
  - Water Storage (Including Final Void)

Source: Orthophoto - Yancoal (2021);  
 LP (2016); NSW Department of Planning & Environment (2017)

**STRATFORDCOAL**  
 Part of the Yancoal Australia Group

STRATFORD EXTENSION PROJECT  
 Final Landform Features



- LEGEND
- Project Approval Boundary\*
  - Coal - Current Titles
  - Final Landform Contours (5 m Interval)

Source: Orthophoto - Yancoal (2021);  
 LP (2016); NSW Department of Planning & Environment (2017)

**STRATFORDCOAL**  
 Part of the Yancoal Australia Group

STRATFORD EXTENSION PROJECT  
 Final Landform Contours

**STRATFORDCOAL**  
 Part of the Yancoal Australia Group

# 3g Mine Closure Planning

Note: \*Refer to Stratford Mining Operations Plan & Rehabilitation Management Plan Table 13 Mine Closure Planning Schedule.  
\*Further detail on mine closure planning progress is included in the Annual Review 2022.

Management Area	Project	Status
Mine Closure Planning General	<ul style="list-style-type: none"> <li>Mine Closure Planning Program</li> </ul>	<ul style="list-style-type: none"> <li>SCPL has established a Mine Closure Planning Program in the MOP in Section 10 and Table 13.</li> <li>IEMA was engaged in June 2021 to assist preparing an updated Mine Closure Planning Program.</li> <li>The Mine Closure Planning Program is intended to provide a strategy and a description of all the works required to develop the Final Closure Plan.</li> </ul>
Rehabilitation Management Plan	<ul style="list-style-type: none"> <li>Rehabilitation Management plan, including closure plan</li> </ul>	<ul style="list-style-type: none"> <li>The Stratford Mining Complex Rehabilitation Management Plan, including closure plan was submitted to the Resources Regulator in July 2022.</li> <li>The RMP has been provided for consultation with the CCC.</li> </ul>
Closure Risk Assessment	<ul style="list-style-type: none"> <li>Mine Closure Risk Assessment review</li> </ul>	<ul style="list-style-type: none"> <li>A review of the Duralie Coal Mine Rehabilitation and Mine Closure Risk Assessment was undertaken in August 2021.</li> <li>The outcomes of the risk assessment have been used to develop an updated actions register which forms the basis of the Mine Closure Planning Program.</li> </ul>
Environmental Management Plans	<ul style="list-style-type: none"> <li>EMP reviews for closure stage</li> </ul>	<ul style="list-style-type: none"> <li>The EMPs will be progressively reviewed and updated as required, to reflect the current stage of operations and the ongoing rehabilitation and mine closure requirements.</li> <li>Identify post-closure environmental monitoring and maintenance requirements.</li> <li>Prepare detailed performance and completion criteria for mine closure.</li> </ul>
Final land use	<ul style="list-style-type: none"> <li>Potential final land-use planning</li> </ul>	<ul style="list-style-type: none"> <li>The target post-mining land uses are defined in the RMP and shown in Figure 4 of the RMP.</li> </ul>

# 3g Mine Closure Planning

Management Area	Project	Status
Stakeholder and Community	<ul style="list-style-type: none"> <li>Stakeholder engagement</li> </ul>	<ul style="list-style-type: none"> <li>Communications with the CCC regarding mine closure planning is ongoing through the life of the project. This presentation will continue to be updated to provide relevant information through the CCC forum.</li> <li>The Mine Closure Planning Program includes requirements for the development of the following strategies: Stakeholder Consultation Strategy, Community Engagement Strategy, Human Resources Strategy.</li> <li>Stakeholder and HR strategies are currently being prepared.</li> </ul>
Rehabilitated Landforms	<ul style="list-style-type: none"> <li>Landform design and stability</li> </ul>	<ul style="list-style-type: none"> <li>SCPL have continued to prepare the detailed final landform designs for the site.</li> <li>Xenith Consulting has prepared a refined final landform design based on the latest aerial survey and proposed mining schedules for the remaining life of mine. This landform will be included in the new RMP.</li> </ul>
Water Management	<ul style="list-style-type: none"> <li>Site water Balance</li> </ul>	<ul style="list-style-type: none"> <li>SCPL will review the site water balance and final landform drainage design to ensure comparable drainage density to local natural landforms.</li> </ul>
Final Voids	<ul style="list-style-type: none"> <li>Water management and final void water balance</li> </ul>	<ul style="list-style-type: none"> <li>SCPL is currently reviewing the final void closure requirements and preparing final void closure criteria for inclusion in the new RMP.</li> <li>Review of the final void site water balance is currently being prepared to ensure the balance incorporates the final landform design, surface water inflows and outflows to/from final void.</li> <li>This work is ongoing and will form an important part of the Mine Closure Planning Program.</li> </ul>
	<ul style="list-style-type: none"> <li>Groundwater Model</li> </ul>	<ul style="list-style-type: none"> <li>Post-mining groundwater model verification is currently being undertaken to incorporate final void design and update the groundwater model. This work is being undertaken in conjunction with the final void water balance.</li> </ul>
Rehabilitation Resources	<ul style="list-style-type: none"> <li>Topsoil Resources</li> </ul>	<ul style="list-style-type: none"> <li>A topsoil stockpile update was undertaken in July 2021 to ensure adequate topsoil is available for rehabilitation. The rehabilitation resources register will be updated throughout mining operations and closure.</li> </ul>
Biodiversity Offset	<ul style="list-style-type: none"> <li>Biodiversity Offset Integration</li> </ul>	<ul style="list-style-type: none"> <li>Integration of the biodiversity offset strategy is a key component of the rehabilitated final land form and land use. SCPL will undertake an assessment of the SMC Biodiversity Offset Areas and Biodiversity Enhancement Areas to confirm completion of the Biodiversity Offset Strategy completion criteria and integration with the SMC rehabilitation.</li> </ul>



# 4. Community Complaints - Summary

## Stratford Complaint Summary

Period: 1/05/2022 - 31/07/2022

Period: 3 Months

Total No. of Complaints:

Total No. of Complainants:

Date/Time of Complaint	Complainant Location	Method of Complaint	Nature of Complaint	Investigation/Outcome

# 5. Community Programs

Management Area	Project	Status
Support Programs	Stratford Coal Community Support Program	<ul style="list-style-type: none"><li>The Stratford Coal Community Support Program will run again in 2022. Applications will open in October 2022.</li></ul>
	Stratford Coal Education Support Fund	<ul style="list-style-type: none"><li>The Stratford Coal Education Support Fund will be running again during 2022 and applications are available from Gloucester High School or the MidCoast Council Gloucester office. Applications will open in December 2022.</li></ul>