

Mount Thorley Warkworth Community Consultative Committee

Monday 14 November 2016

Independent Chair: Col Gellatly

Agenda

1. Welcome
2. Apologies
3. Declaration of pecuniary interests / conflicts of interest
4. Correspondence
5. Matters arising from previous meeting (Actions)
6. Company reports
7. VPA Forum Overview
8. Community feedback
9. General business & Future Dates

1.0 Welcome



Warkworth Mining Limited EMERGENCY EVACUATION PROCEDURES



ACTION TO BE TAKEN ON DISCOVERING A FIRE OR OTHER EMERGENCY

1. ALERT PERSONS NEARBY OF THE SITUATION.
2. EXTINGUISH THE FIRE IF ABLE TO DO SO WITH SAFETY
3. IF NOT ABLE TO PERFORM 2) NOTIFY RECEPTION OF THE EMERGENCY
3. FOLLOW THE EVACUATION PROCEDURES.

ACTION TO BE TAKEN TO EVACUATE THE BUILDING.

1. FOLLOW INSTRUCTIONS OF THE WARDENS.
2. CLOSE YOUR OFFICE DOOR AND TAKE THIS SIGN WITH YOU.
3. WALK TO THE NEAREST EXIT - DO NOT RUN.
4. PROCEED TO THE EMERGENCY MUSTER POINT ABOVE THE FIRE DAM
4. DO NOT RETURN TO WORK AREA FOR ANY REASON.

2.0 Apologies & others

Apologies

3.0 Declaration of interests

PECUNIARY AND OTHER INTERESTS

Members should declare any pecuniary or other interest which may be considered to prevent them undertaking their role impartially and in the best interests of the local and broader communities. Examples include holding a private contract with the company or holding voluntary acquisition rights. These guidelines establish no requirement in respect of personal interests other than declaration. However, the committee may determine that a personal interest is sufficient that a member should withdraw from discussion on a particular issue.

Source: *Guidelines for establishing and operating community consultative committees for mining projects, June 2007*

5.0 Correspondence

5.1 Business papers

5.2 Previous Minutes

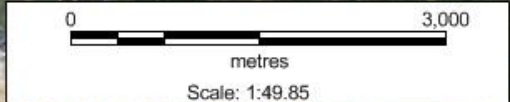
6.0 Matters arising from previous meetings

Item	Action
1	<p>MTW to invite representative from Telstra to discuss mobile reception in Bulga. <i>[Ongoing: Rep couldn't come to this meeting, discuss options]</i></p>
2	<p>MTW to report future plans for Wallaby Scrub Rd to CCC at either a CCC Meeting or via email. <i>[Complete: Ongoing.]</i></p>
3	<p>MTW to present the criteria and processes regarding property affectation and acquisition. <i>[Complete: See Business Paper.]</i></p>
4	<p>MTW to confirm how the Air & Noise Information Session was advertised. <i>[Complete: The session was advertised in the near neighbour letter.]</i></p>
5	<p>MTW to ramp up Kangaroo Management Program. <i>[Complete: The Kangaroo Management Program was restarted on the 06/09/2016. 120 Kangaroos have been harvested over 3 nights.]</i></p>
6	<p>MTW to provide an overview of the tendering process for grazing opportunities on C&A land. <i>[Complete: This meeting.]</i></p>

7.0 Company Reports

7.1 GM Overview of activities

Morgan Costello – General Manager



Rehabilitation Progress

Rehabilitation target for 2016 = 83.3 ha (outlined in red)

Works completed 2016:

97.3 ha bulk shaped

65.9 ha topsoiled

64.0 ha composted

42.3 ha seeded

TD2 Capping

Following success of works to cap Tailings Dam 1 (WML), work will shortly commence on nearby TD2:

Start date: December 2016

Expected end date: 2018

Total area: 48ha

Minimum cap of 2m

Plan of: Seeded 2016

Date: Oct16

Location: MTW

Plan By: RPC

Version: 1.0

**COAL
&
ALLIED**



Legend

Total Claimed Rehab YTD = 42.3 ha

Planned 2016 seeding (83.3 ha)

Seeding claimed YTD (42.3 ha)

- Blasting
- Visual Bund along the Putty Rd

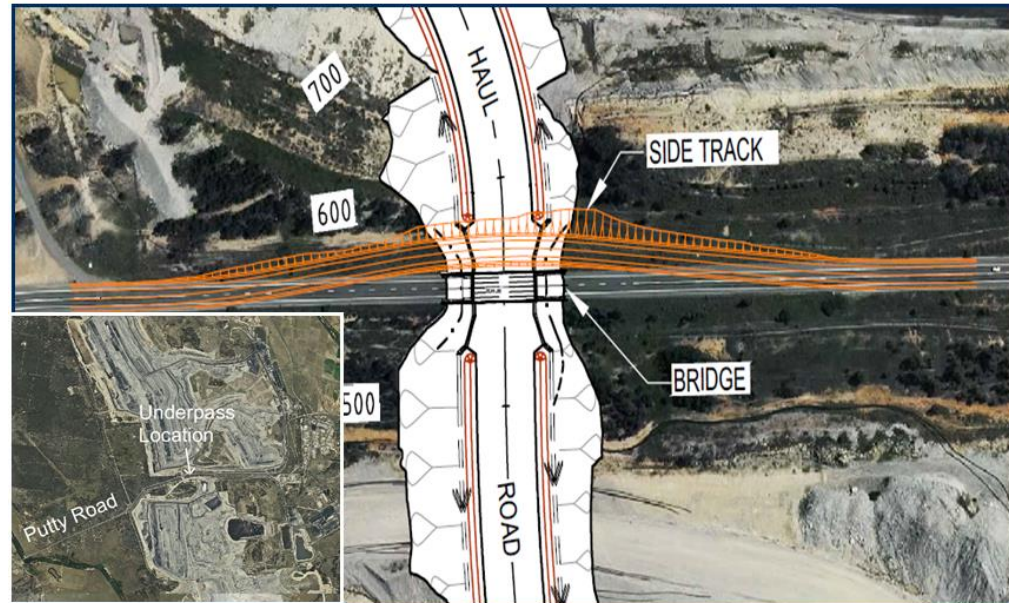
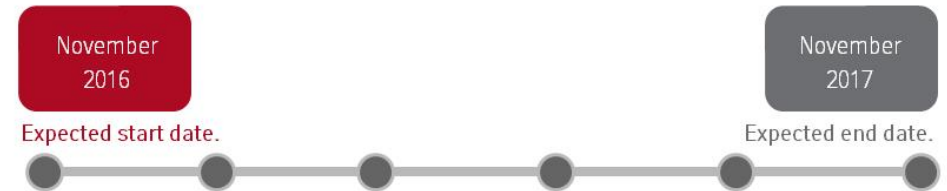


Operational Update – Putty Road Underpass

Coal & Allied is building an underpass beneath a section of Putty Road between the Mount Thorley Operations and Warkworth Mining Limited mines to the north-east of Bulga (see map below). The underpass is needed to allow our haul trucks to safely move between the mining areas of Mount Thorley and Warkworth as we work to backfill the Mount Thorley mining void in line with the conditions of the Mount Thorley Continuation Project.

You can call our community information line on 1800 727 745 for information and updates on the works.

Key dates...



Important information:



This project will take approximately
12 months



600m
of road affected



Traffic controls
at certain times



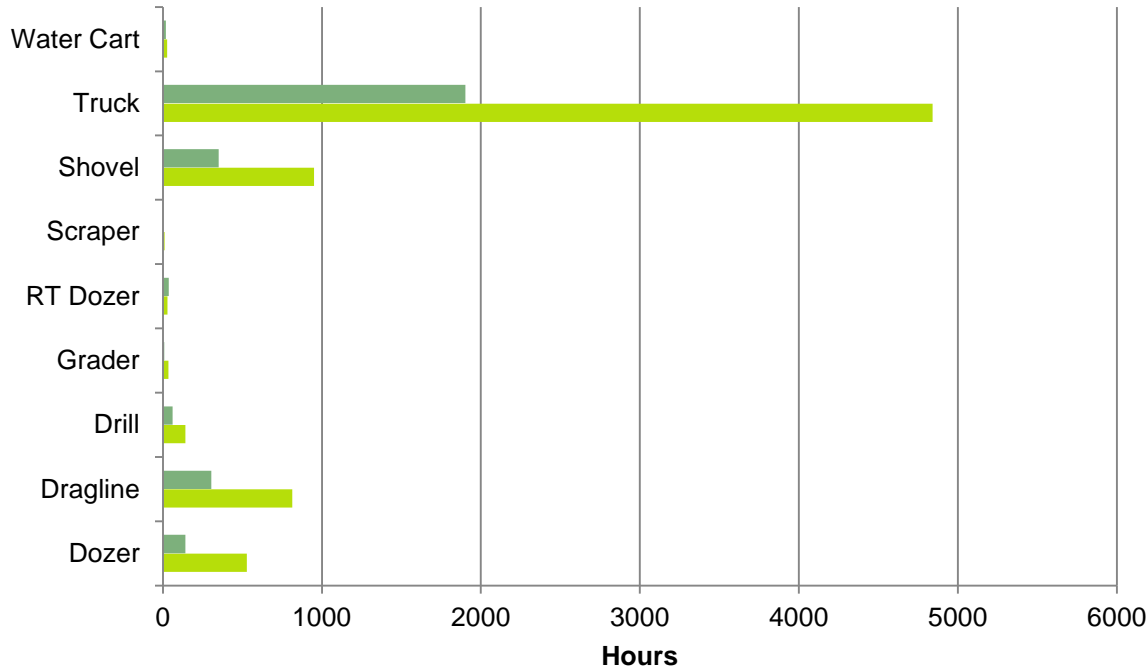
80km/hr
speed limit whilst traffic
travels on side-road

- Inter-Agency Audit program: Dam Safety
 - Joint audit completed on Tuesday 18th October
 - Audit comprised NSW EPA, Resources Regulator and DPE
 - Audit of MTO under the Dams at NSW Mines Audit Program
 - Audit report from the NSW EPA will be available to the public via the NSW EPA Website
- Theft on C&A Properties

- Transition to new noise criteria (WML Consent)
 - Tied to the completion of the sound attenuation program
 - New noise criteria come into force on 1st January 2017
 - Once in place, all noise criteria will have transitioned across from old consent to new consent
 - Requires submission and approval of a revised Noise Management Plan. This will be submitted to DP&E before the end of November

Location	Mount Thorley Approval		Warkworth Approval	
	Old approval	New approval	Old approval	New approval
Bulga Village	40	38	38	38
Bulga RFS	38	37	35	37
Inlet Road	38	37	38	37
Inlet Road West	35	35	35	35
South Bulga	37	36	35	35
Wambo Road	40	38	38	38
Gouldsville Road	44	35	37	38
Long Point	39	35	36	35

Operational Downtime



YTD 2016 = 2822.5 hours
Same period 2015 = 4984.9 hours

■ 2016
■ 2015

	# CRO Assessments	# Above trigger	# Nights above trigger
YTD 2015	5820	172	55
YTD 2016	4407	81	32

MTW Fleet Percentages Fitted with Full Sound Kit

Trucks	Water Carts	Dozers	Excavators	Drills
93%	86%	77%	100%	100%

Fleet requiring sound attenuation prior to end of 2016:

- 4x Trucks
- 1x Water Cart
- 4x Dozers

8.0 General Business

8.1 VPA Forum Overview

Social Impact Management Plan

8.0 General Business

8.2 Process for Land Tendering

9.0 Feedback from community representatives

10.0 Future Dates

10.1 Meeting Dates for 2017

*Meetings nominally held **2nd Monday of the 2nd month of each quarter** (pending confirmation at each meeting)*

- 13th February 2017
- 8th May 2017
- 14th August 2017
- 13th November 2017

10.2 Next Meeting (confirm today)

13th February 2017

14:00-16:00

Warkworth Boardroom

Focus Topic Suggestions?

End of meeting – please travel safely



Mount Thorley Warkworth
Community Consultative Committee

Business Papers – November 2016

Materials ahead of meeting of the committee on 14 November 2016

Contents page

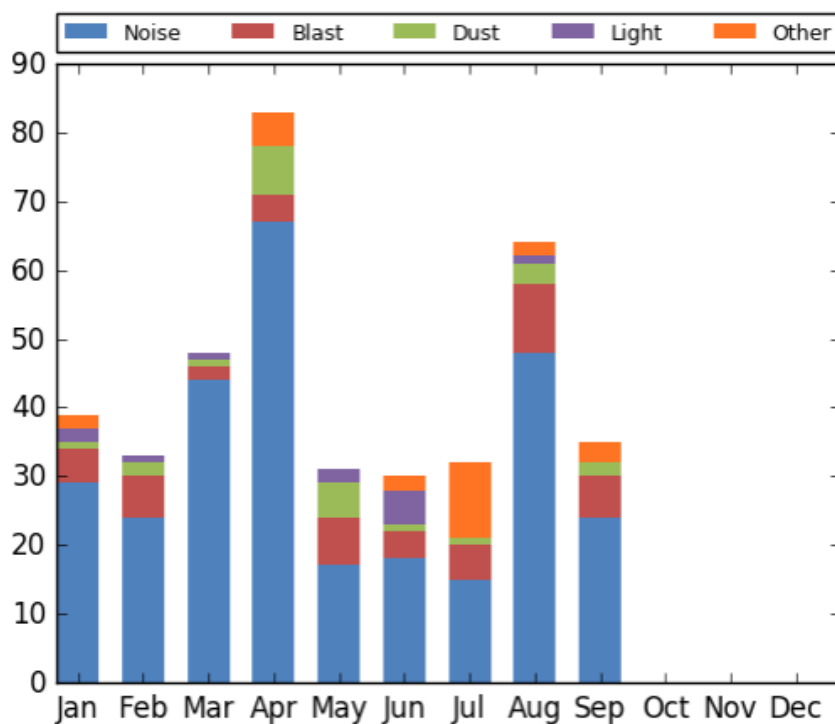
1.0 Complaints	3
2.0 Incidents	4
3.0 Environmental monitoring	6
July 2016	6
August 2016	6
September 2016	6
4.0 Rehabilitation plan	7
5.0 Sound Attenuation Update	12
6.0 Acquisition Update	13
7.0 Website Uploads	14
8.0 Community investment & support	16
Mount Thorley Warkworth (MTW) site donations	16
Coal & Allied Community Development Fund (CDF)	17
Coal & Allied Aboriginal Community Development Fund (ACDF)	19
9.0 Property Acquisitions Overview	20
Appendices	
Appendix A – Environmental Monitoring Report July 2016	
Appendix B – Environmental Monitoring Report August 2016	
Appendix C – Environmental Monitoring Report September 2016	
Appendix D – Acquisition Update – Mount Thorley Warkworth Property Portfolio	

1.0 Complaints

Complaints overview for period 1 January to 30 September 2016

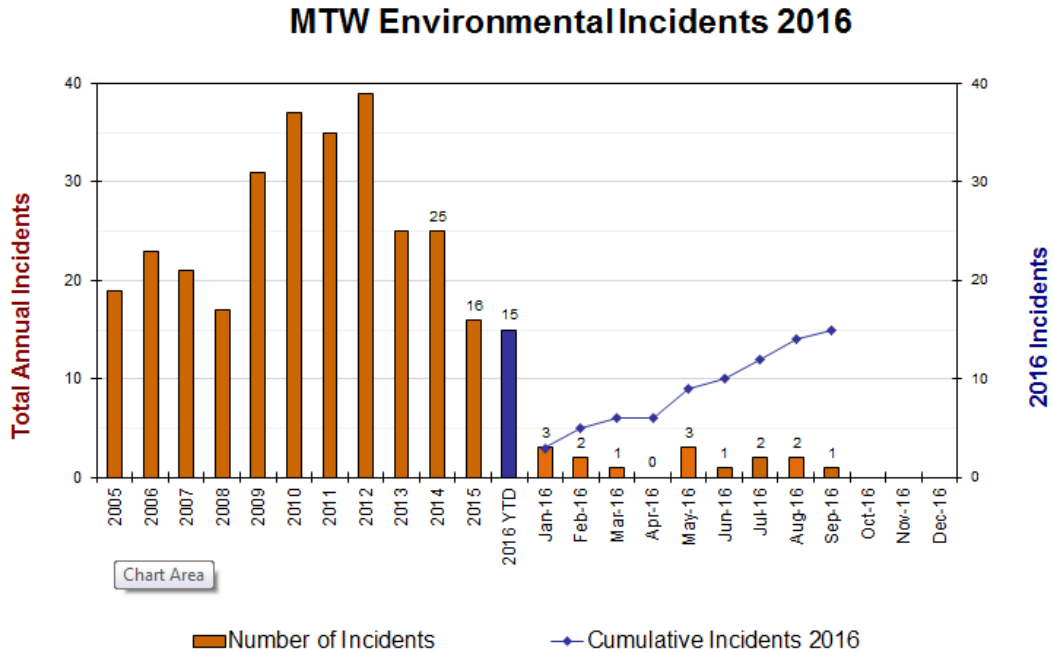
Mount Thorley Warkworth Monthly Complaints Summary

	Noise	Dust	Blast	Lighting	Other	Total
January	29	1	5	2	2	39
February	24	2	6	1	0	33
March	44	1	2	1	0	48
April	67	7	4	0	5	83
May	17	5	7	2	0	31
June	18	1	4	5	2	30
July	15	1	5	0	11	32
August	48	3	10	1	2	64
September	24	2	6	0	3	35
October	-	-	-	-	-	-
November	-	-	-	-	-	-
December	-	-	-	-	-	-
Total	286	23	49	12	25	395



2.0 Incidents

Overview of environmental incidents for period 1 January to 30 September 2016



Incident summary for the period 1 July to 30 September 2016

Date	Details	Key Actions	Aspect
8-July-2016	<p>Oil Spill at 120 Fuel Farm</p> <p>Delivery driver unloaded engine oil into the hydraulic oil tank leading to a spill of 500L of oil into a bunded area.</p>	<p>Oil was collected and disposed of in the Waste Hydrocarbon Tank.</p> <p>Delivery operators to ensure they use and follow SWP.</p>	Spill-Hydrocarbons
15-July-2016	<p>Hydraulic oil spill at South Reject Bin</p> <p>Hydraulic hose blew spilling approximately 40L of hydraulic oil onto hardstand area.</p>	<p>Hydraulic hose replaced and contaminated material taken to bioremediation pad.</p>	Spill-Hydrocarbons

Date	Details	Key Actions	Aspect
9-Aug-2016	<p>Miscapture of Blast Data</p> <p>A GPS fault on the Bulga Village blast monitor caused the monitor to assign the incorrect time to the event. As a consequence the blast data was not recorded for the event.</p>	<p>Software updated such that an alert is now sent if the GPS co-ordinates of any unit change (+200m).</p> <p>Blast results for Bulga Village were calculated by the MTW Drill & Blast Engineer using AS2187.2 and sonic decay laws.</p> <p>Reported to EPA and DPE.</p>	Administration
25-Aug-2016	<p>Grease Spill at VSB</p> <p>Approximately 20L of grease spilt when an operator failed to disconnect the grease hose.</p>	<p>All grease was collected and disposed in the waste grease bin.</p>	Spill-Hydrocarbons
13-Sep-2016	<p>Topsoil stripping without correct environmental controls</p> <p>During a work area inspection it was identified that the full erosion and sediment control plan required for an area of topsoil clearing had not been implemented. The sedimentation fence and bund that was in place did not meet the correct specification. All water in contact with the cleared area was captured behind the bund.</p>	<p>Work was immediately ceased and the correct controls put in place before work recommenced.</p> <p>Retrained workers on the importance of water management and environmental compliance</p>	Administration

3.0 Environmental monitoring

Monthly summaries of environmental monitoring for the period
1 July 2016 to 30 September 2016

July 2016

Attached as **Appendix A**

August 2016

Attached as **Appendix B**

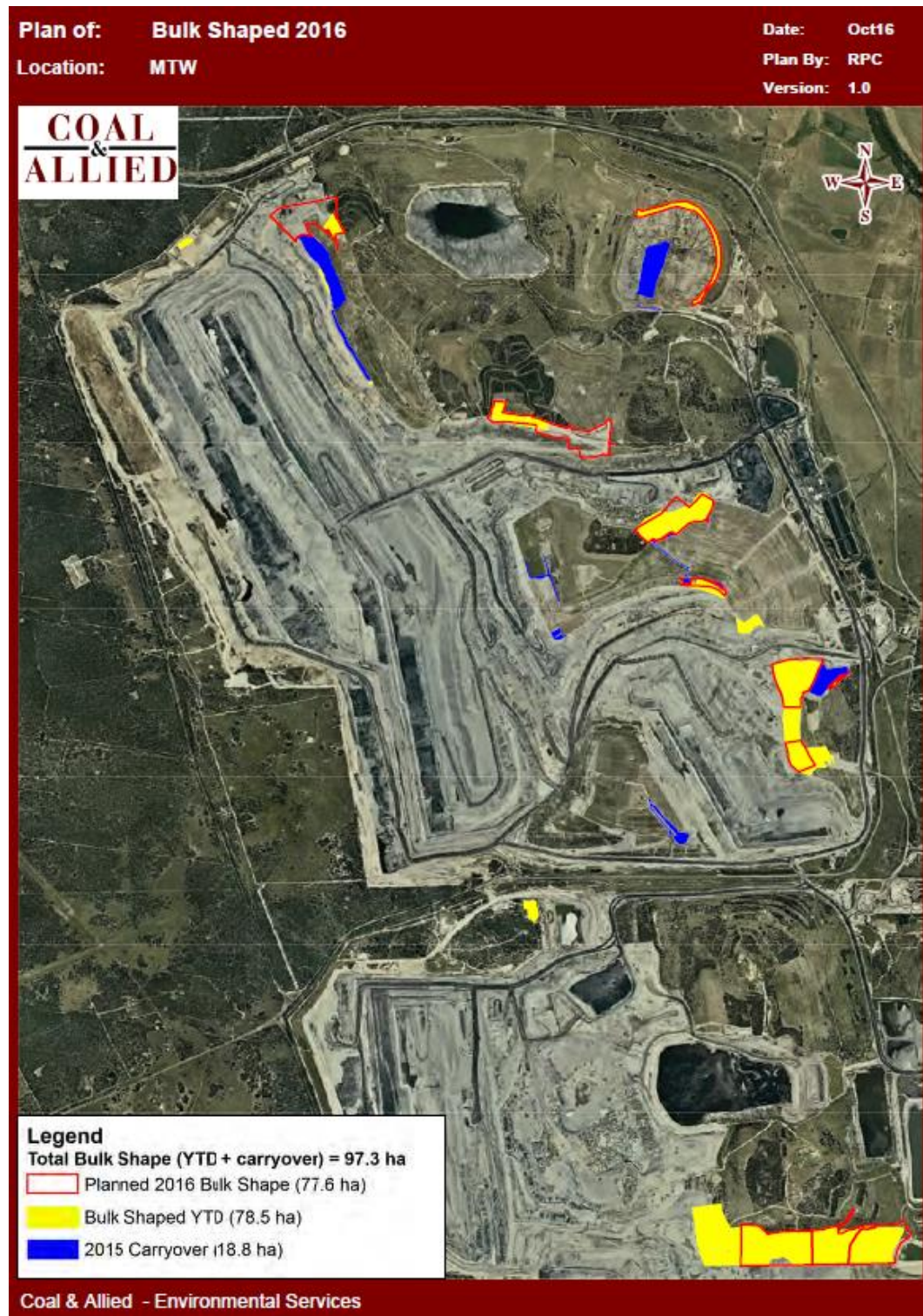
September 2016

Attached as **Appendix C**

4.0 Rehabilitation plan

At the end of the October rehabilitation is progressing well with 97.3 ha of the targeted areas bulk shaped, 65.9 ha of topsoiled, 64.0 ha composted and 42.3 ha seeded.

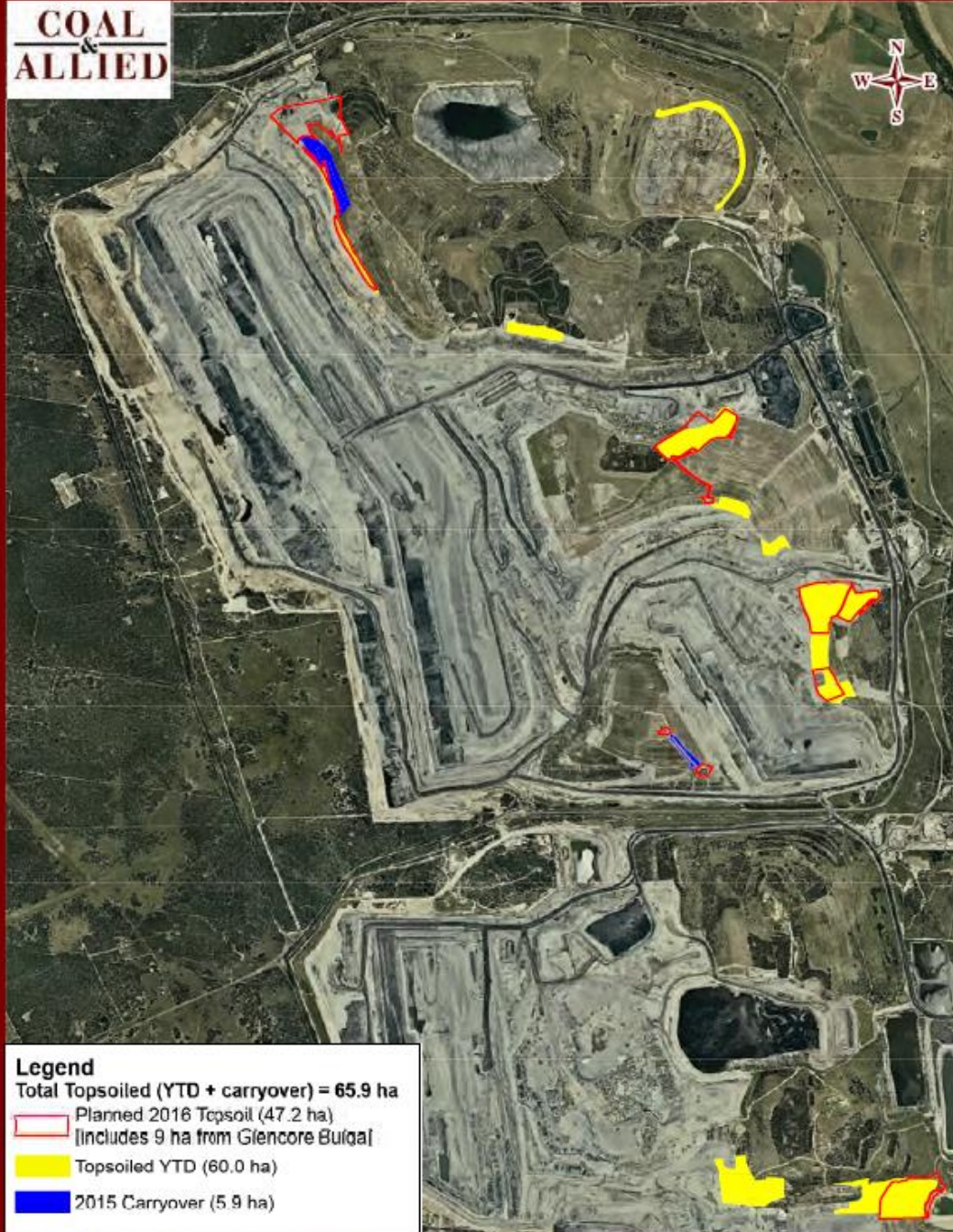
Disturbance was predominantly in Warkworth's West Pit area, for mine advance, and to construct a water management contour along the western extent of the disturbance to manage water off pre-strip activities. A total of 105.5 ha has been disturbed at the end of October.



Plan of: **Topsoiled 2016**
Location: **MTW**

Date: **Oct16**
Plan By: **RPC**
Version: **1.0**

**COAL
&
ALLIED**

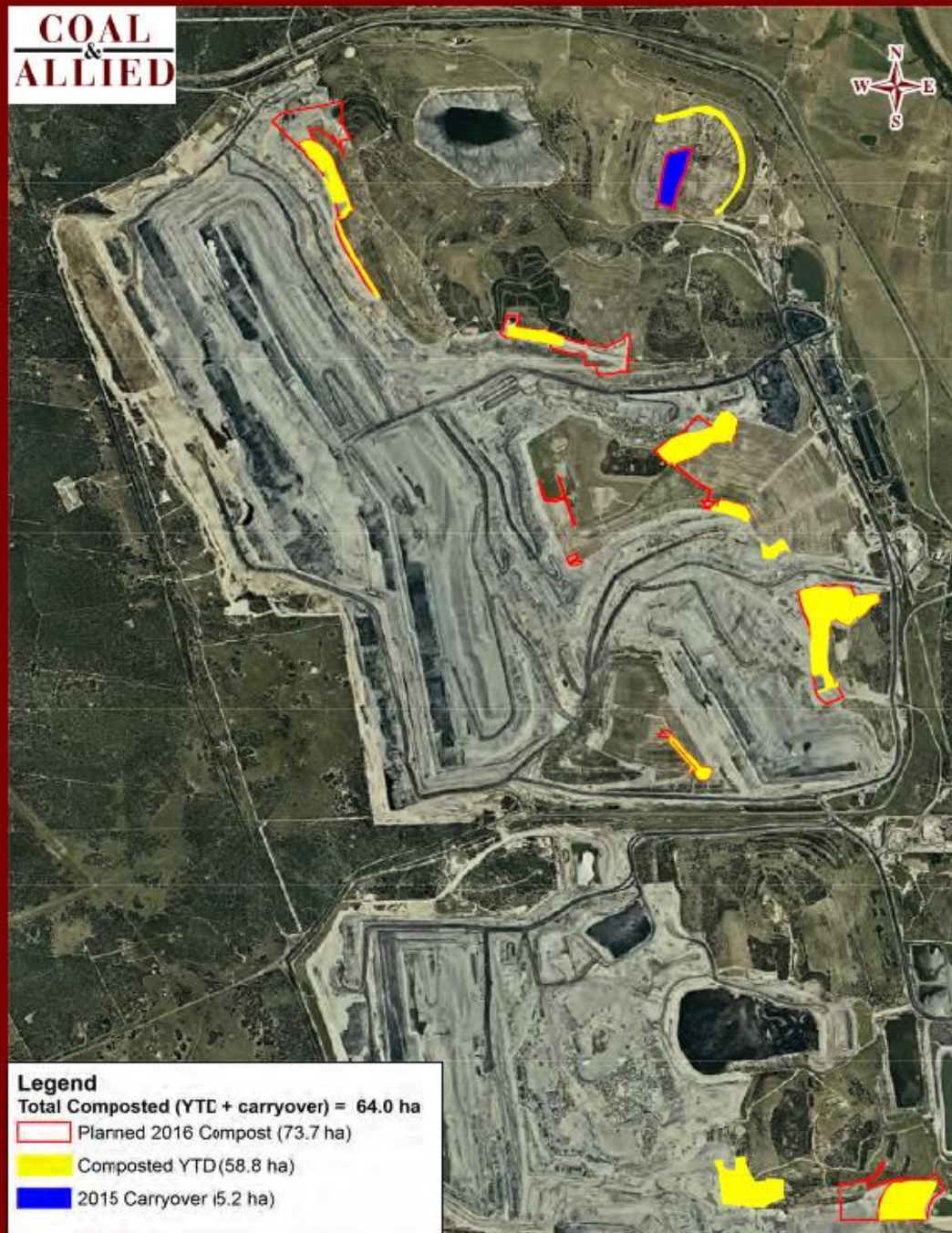


Legend
Total Topsoiled (YTD + carryover) = **65.9 ha**
Planned 2016 Topsoil (47.2 ha)
[Includes 9 ha from Glencore Bulqa]
Topsoiled YTD (60.0 ha)
2015 Carryover (5.9 ha)

Coal & Allied - Environmental Services

Plan of: **Composted 2016**
Location: **MTW**

Date: **Oct16**
Plan By: **RPC**
Version: **1.0**



Coal & Allied - Environmental Services

Plan of: Seeded 2016

Date: Oct16

Location: MTW

Plan By: RPC

Version: 1.0

**COAL
&
ALLIED**



Coal & Allied - Environmental Services

Plan of: Disturbance 2016
Location: MTW

Date: Oct16
Plan By: RPC
Version: 1.0

**COAL
&
ALLIED**



Legend

- Total Planned Disturbance 2016 = 149 ha
- Planned 2016 New Disturbance (140.4 ha)
- Planned 2016 Rehab Disturbance (8.6 ha)
- Disturbance YTD (105.5 ha)

Coal & Allied - Environmental Services

5.0 Sound Attenuation Update

Year to date, MTW has attenuated 19 haul trucks bringing the total attenuated to 71. Overall approximately 90% of the heavy mobile equipment has been attenuated.

MTW Fleet Percentages Fitted with Full Sound Kit					
Haul Trucks	Water Carts	Dozers	Excavator	Drill	Total
93%	86%	77%	100%	100%	90%

6.0 Acquisition Update

A presentation with a property acquisition update for Mount Thorley Warkworth is included in **Appendix D** of this Business Paper. A third property at 1946 Putty Road was added to the property portfolio on the 14/09/2016.

7.0 Website Uploads

The following is a list of all documents uploaded to the MTW library of the Rio Tinto website between the period of 1 July 2016 to 30 September 2016. Uploads have been characterised as Additions, being a new document, or a Change, meaning a new version of an existing document. Please refer to the library page of the website for document contents: <http://www.riotinto.com/copperandcoal/documents-10401.aspx>

Table 1: Uploaded Documents

Document Title	Upload type
Mount Thorley Warkworth Environmental Protection Licence 1376 1976 Monthly Meaningful Summary June 2016	Addition
Mount Thorley Warkworth Environmental Protection Licence 1376 1976 Monthly Obtained Data Summary June 2016	Addition
Mount Thorley Warkworth Environmental Monitoring Report June 2016	Addition
Mount Thorley Warkworth Noise Management Plan	Change
Mount Thorley Warkworth Complaints Register 2016	Change
Mount Thorley Warkworth Community Consultative Committee Meeting Minutes November 2015	Addition
Mount Thorley Warkworth Community Consultative Committee Meeting Business Papers August 2016	Addition
Mount Thorley Warkworth Community Consultative Committee Meeting Presentation August 2016	Addition
Mount Thorley Warkworth Blast Management Plan	Change
Mount Thorley Warkworth Environmental Protection Licence 1376 1976 Monthly Meaningful Summary July 2016	Addition
Mount Thorley Warkworth Environmental Protection Licence 1376 1976 Monthly Obtained Data Summary July 2016	Addition
Mount Thorley Warkworth Environmental Monitoring Report July 2016	Addition
Mount Thorley Warkworth Blast Management Plan	Change
Coal and Allied Environmental Management Strategy	Addition
Mount Thorley Warkworth Environmental Protection Licence 1376 1976 Monthly Meaningful Summary August 2016	Addition
Mount Thorley Warkworth Environmental Protection Licence 1376 1976 Monthly Obtained Data Summary August 2016	Addition
Mount Thorley Warkworth Environmental Monitoring Report August 2016	Addition

Mount Thorley Warkworth Community Consultative Committee Meeting Minutes December 2015	Addition
Mount Thorley Warkworth Community Consultative Committee Meeting Business Papers May 2016	Addition
Mount Thorley Warkworth Community Consultative Committee Meeting Minutes May 2016	Addition

8.0 Community investment & support

Mount Thorley Warkworth (MTW) site donations

The site donations committee provides an opportunity for employees to assess and make recommendations on requests for sponsorship and donations received by MTW.

Funding is provided in the form of sponsorship or a donation to assist local, community-based organisations. The funding criteria for site donations has been updated to reflect MTW's focus on funding projects and initiatives from the Bulga, Milbrodale, Broke and Singleton area.

Application forms can be requested by emailing CNACommunityRelation@riotinto.com. Alternatively, potential projects and opportunities for support from Coal & Allied can be discussed with Travis Bates – Community Relations Specialist, Singleton.

Year to date, MTW site donations committee has invested \$38,692 to 16 local projects and initiatives, including:

- Singleton Council
- Hunter Safety Award
- Singleton Rotary Club on Hunter
- Hunter Valley Group 21 JRL
- Singleton Junior Bulls
- AFOM
- Singleton Theatrical Society
- Wildlife Aid Inc.
- Cancer Council NSW
- Singleton Golf Club Lady Members
- Heights Pet Hospital
- Singleton Beef & Land Management
- Singleton Hospital
- Hunter River Community School
- Branxton Public School
- Mid Hunter Palliative Care Volunteers Inc.
- Singleton SES
- Northern Agriculture Association Inc.
- Milbrodale Public School P&C Association
- Hunter Valley Off Road Racing Association

Coal & Allied Community Development Fund (CDF)

The year 2016 marks 18 years of operation of the CDF, which has invested over \$14.5 million to support over 120 community projects in the Hunter Valley since its establishment in 1999, across the areas of health, education, environment and economic development.

In 2014, Coal & Allied announced that a further \$3 million would be made available to the CDF over a three year period (2015 – 2017) for projects in the Singleton, Muswellbrook and Upper Hunter LGAs. Strategic priority areas have been refined for the 2015-2017 funding cycle to enable a more targeted approach to addressing identified community need and to leverage other resources Coal and Allied may be able to offer to strengthen community partnerships.

Priority areas for the 2015-2017 funding cycle include:

- Economic Development: encouraging the diversity and competitiveness of the Upper
- Hunter economy
- Community Health: Supporting projects which target health, safety and social wellbeing of the community
- Education: Promoting the value of education and building skills within our community
- Environment and Land Management: Supporting projects that can make a difference on a greater scale. i.e. beyond C&A mining operations

In 2015/2016, the CDF has committed more than \$1 million to 13 new programmes aimed at delivering long term benefits for communities in the CDF catchment, which include the Singleton, Muswellbrook and Upper Hunter LGAs. A further \$1.5 million is available for allocation in 2016-2017.

Table 2: Coal & Allied CDF projects approved in 2015/2016

Programme	Partner
Enterprise Facilitation	Sirrolli Institute
Supporting Children’s Developing Social Competence	Early Links Inclusion Support Service
Science and Engineering Challenge, and SMART Program (2015 - 2017)	University of Newcastle
Upper Hunter Education Fund Scholarships (2015 - 2017)	Upper Hunter Education Fund
Upper Hunter Beef Bonanza	Upper Hunter Beef Bonanza
Singleton High School Agricultural Course	Singleton High School
University of Newcastle Scholarships	University of Newcastle
Singleton Community College Strategic Plan	Singleton Community College
HSC Study Camps	Upper Hunter Education Fund
Business Development Officer	Singleton Business Chamber

Early Learning Program	Milbrodale Public School
Book Week	Singleton Primary Schools
Ready 4 School Program	Jerrys Plains Public School

Table 3: Active Coal & Allied CDF programmes running throughout 2015/2016.

Programme	Partner
Upper Hunter Shire Council Community Engagement	Upper Hunter Shire Council
Building Skills and Leadership Capacity in Rural NSW	Royal Agricultural Society (NSW) Foundation
Hunter Youth Leadership Program	The Australian Outward Bound Development Fund
People in Your Neighbourhood- Sustainability Street	Muswellbrook Shire Council
Tocal Schools Steer Challenge	Department of Primary Industries Tocal College
Local SME Supply Chain Participant project	HunterNet
Scholarship Program	University of Newcastle
Economic Development and Funding Coordinator	Singleton Council
Business Development Officer	Singleton Business Chamber
Singleton Place Making (ended in July 2015)	Singleton Council
Science and Engineering Challenge and SMART Program	University of Newcastle
Enterprise Facilitation	Sirolli Institute
Upper Hunter Beef Bonanza	UHBB
Supporting Children's Developing Social Competence	Early Links
Upper Hunter Education Fund Scholarships	UHEF

Coal & Allied Aboriginal Community Development Fund (ACDF)

The ACDF has transferred to the new owners of the Mount Pleasant Project, MACH Energy Australia. There are not expected to be any significant changes in the medium term to the operation of the ACDF and it will continue to be accessible to any Aboriginal person living in the Upper Hunter Valley (UHV) or organisations undertaking a project to benefit specific Aboriginal groups or the wider Aboriginal community in the UHV.

9.0 Property Acquisitions Overview

MTW has received a number of enquiries from community members regarding the property acquisition process. The following summarises information contained in the MTW Project Approvals documentation.

Property Acquisitions – MTW (November 2016)

- Under the 2015 MTW Consents a number of properties were given the right to request that their property be acquired according to the process outlined below. Each of these property owners were advised of their rights in writing in December 2015. These properties are those referred to in the Table below.
- Additionally, Warkworth also advised (in writing) a number of property owners that their former voluntary acquisition rights (granted under the now disapproved Warkworth Extension 2012 Planning Approval) would be reinstated, subject to all the relevant approvals being in place.

The process for property acquisition is outlined below, and is applicable to both types of landowners described above.

ACQUISITION UPON REQUEST

Upon receiving a written request for acquisition from an owner prescribed in the 2015 MTW Consents or who has former (2012) voluntary acquisition rights, Warkworth Mining Limited or Mount Thorley Operations (as applicable) shall acquire the land in accordance with the procedures below.

Table 4: Properties listed as having Acquisition rights for Warkworth 2015 Consents

<i>Acquisition Basis</i>	<i>Land</i>
Noise & Air	77, 102, D, E, F
Noise	34, 81, 148, 150, 190, 192, J
Air	A, B

Table 5: Properties listed as having Acquisition rights for Mount Thorley 2015 Consents

<i>Acquisition Basis</i>	<i>Land</i>
Noise	144, 146, 149, 915
Air	K

Tables 6-8: Properties with Reinstated Acquisition rights - former voluntary acquisition rights (granted under the now disapproved Warkworth Extension 2012 Planning Approval)

Table 6: WML 2012 Consent

<i>Acquisition Basis</i>	<i>Land</i>
Noise & Air	77, 102, D, E, F
Noise	81, 87, 97, 144, 146, 147, 148, 149, 150, 153, ,189, 190, 192, J
Air	A, B, K

Table 7: WML 2012 – Additional land subject to acquisition

Period of additional acquisition entitlement	Land
Until Cessation of Mining Operations under Project Approval 09_0202	25, 27, 29, 34,
Until 31 December 2020	42, 50, 53, 55, 56, 57, 58, 59, 60, 62, 63, 64, 65, 66, 68, 69, 71, 72, 73, 82

Table 8: MTO 2012 Consent

<i>Acquisition Basis</i>	<i>Land</i>
Noise	81, 87, 97, 144, 146, 148, 149, 150, 153, 189, 190, K

LAND ACQUISITION

After receiving a written request from a landowner with acquisition rights, the Project Proponent will make a written offer to the landowner (in certain circumstances within a prescribed time-frame), which may or may not be conditional upon all the relevant approvals being in place; with such an offer to be based on:

(a) the current market value of the landowner’s interest in the land at the date of their written request, as if the land was unaffected by the development, having regard to the:

- Existing and permissible use of the land, in accordance with the applicable planning instruments at the date of the written request; and
- Presence of improvements on the land and/or any approved building or structure which has been physically commenced at the date of the landowner’s written request, and is due to be completed subsequent to that date, but excluding any improvements that have resulted from the implementation of the additional noise and/or air quality mitigation measures in the relevant Consent;

(b) the reasonable costs associated with:

- Relocating within the Muswellbrook, Singleton or Cessnock local government area, or to any other local government area determined by the Secretary; and

- Obtaining legal advice and expert advice for determining the acquisition price of the land, and terms upon which it is to be acquired; and

(c) a fixed or reasonable amount of compensation for any disturbance caused by the land acquisition process.

If agreement cannot be reached on the acquisition price of the land and/or the terms upon which the land is to be acquired, then the landowner should contact the Project Proponent to understand the next steps.

For more information or to ask a question

For more information please do not hesitate to phone our Singleton Shopfront on 1800 727 745 (select option two). You are also more than welcome to visit our Shopfront (127 John Street, Singleton), which is staffed 8:00am to 4:00pm on business days, to discuss any other matters relating to MTW.

You can also find a copy of the 2015 MTW Project Approvals at <http://majorprojects.planning.nsw.gov.au/> (type Warkworth Continuation or Mount Thorley Continuation into the Project Title or Location search tool).

Please also see <http://www.planning.nsw.gov.au/Policy-and-Legislation/~media/E785D4AFFE7B447487FF9D96111C502B.ashx> for the NSW Government's Voluntary Land Acquisition and Mitigation Policy.