



Monthly Environmental Monitoring Report

Yancoal Mount Thorley Warkworth

May 2019

CONTENTS

1.0	INTRODUCTION.....	4
2.0	AIR QUALITY.....	4
2.1	Meteorological Monitoring.....	4
2.1.1	Rainfall.....	4
2.1.2	Wind Speed and Direction.....	4
2.2	Depositional Dust.....	6
2.3	Suspended Particulates.....	6
2.3.1	HVAS PM ₁₀ Results.....	6
2.3.2	TSP Results.....	7
2.3.3	Real Time PM ₁₀ Results.....	7
2.3.4	Real Time Alarms for Air Quality.....	7
3.0	WATER QUALITY.....	8
3.1	Surface Water.....	8
3.2	Groundwater Monitoring.....	8
3.3	HRSTS Discharge.....	8
4.0	BLAST MONITORING.....	9
4.1	Blast Monitoring Results.....	9
5.0	NOISE.....	12
5.1	Attended Noise Monitoring Results.....	12
5.1.1	WML Noise Assessment.....	12
5.1.3	MTO Noise Assessment.....	13
5.1.4	NPfi Low Frequency Assessment.....	13
5.2	Noise Management Measures.....	16
6.0	OPERATIONAL DOWNTIME.....	16
7.0	REHABILITATION.....	17
8.0	ENVIRONMENTAL INCIDENTS.....	17
9.0	COMPLAINTS.....	17
	Appendix A: Meteorological Data.....	18

Figures

Figure 1: Rainfall Trend YTD	4
Figure 2: Charlton Ridge Wind Rose – May 2019	4
Figure 3: Air Quality Monitoring Locations	5
Figure 4: Depositional Dust – May 2019	6
Figure 5: Individual PM ₁₀ Results – May 2019	6
Figure 6: Annual Average PM ₁₀ – May 2019	7
Figure 7: Annual Average Total Suspended Particulates – May 2019	7
Figure 8: Real Time PM ₁₀ daily 24hr average (line graphs) and YTD annual average (column graphs) – May 2019	8
Figure 9: Abbey Green Blast Monitoring Results – May 2019	9
Figure 10: Bulga Village Blast Monitoring Results – May 2019	9
Figure 11: MTIE Blast Monitoring Results – May 2019	10
Figure 12: Wollemi Peak Road Blast Monitoring Results – May 2019	10
Figure 13: Wambo Road Blast Monitoring Results – May 2019	10
Figure 14: Warkworth Blast Monitoring Results – May 2019	10
Figure 15: MTW Blast Monitoring Location Plan	11
Figure 16: Noise Monitoring Location Plan	15
Figure 17: Operational Downtime by Equipment Type – May 2019	16
Figure 18: Rehabilitation YTD – May 2019	17

Tables

Table 1: Monthly Rainfall MTW	4
Table 2: Blasting Limits	9
Table 3: L _{Aeq, 15 minute} Warkworth Impact Assessment Criteria – May 2019	12
Table 4: L _{A1, 1 minute} Warkworth - Impact Assessment Criteria – May 2019	12
Table 5: L _{Aeq, 15minute} Mount Thorley - Impact Assessment Criteria – May 2019	13
Table 6: L _{A1, 1Minute} Mount Thorley - Impact Assessment Criteria – May 2019	13
Table 7: Low Frequency Noise Modifying Factor Assessment – May 2019	14
Table 8: Supplementary Attended Noise Monitoring Data – May 2019	16
Table 9: Complaints Summary YTD	17
Table 10: Meteorological Data – Charlton Ridge Meteorological Station – May 2019	19

Revision History

Version No.	Version Details	Document Status	Date
1.0	Environmental Advisor	Final	18/07/2019

1.0 INTRODUCTION

This report has been compiled to provide a monthly summary of environmental monitoring results for Mount Thorley Warkworth (MTW). This report includes all monitoring data collected for the period 1 May to 31 May 2019.

2.0 AIR QUALITY

2.1 Meteorological Monitoring

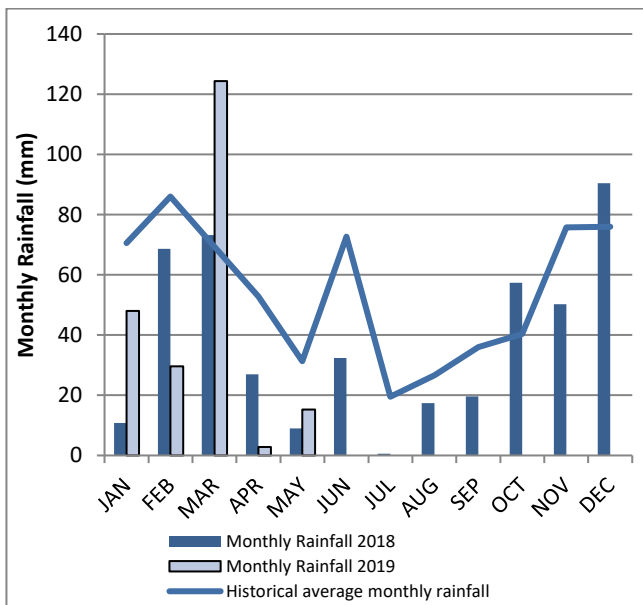
Meteorological data is collected at MTW's 'Charlton Ridge' meteorological station (refer to **Figure 3: Air Quality Monitoring Locations**).

2.1.1 Rainfall

Rainfall for the reporting period is summarised in **Table 1**, the year-to-date monthly rainfall totals, 2018 monthly rainfall totals and historical average monthly rainfall trend are shown in **Figure 1**.

Table 1: Monthly Rainfall MTW

2019	Monthly Rainfall (mm)	Cumulative Rainfall (mm)
May	15.2	220.0



Note: The historical average monthly rainfall is calculated from 2007 to 2018 monthly totals

Figure 1: Rainfall Trend YTD

2.1.2 Wind Speed and Direction

Winds from the north-west were dominant throughout the reporting period as shown in **Figure 2**.

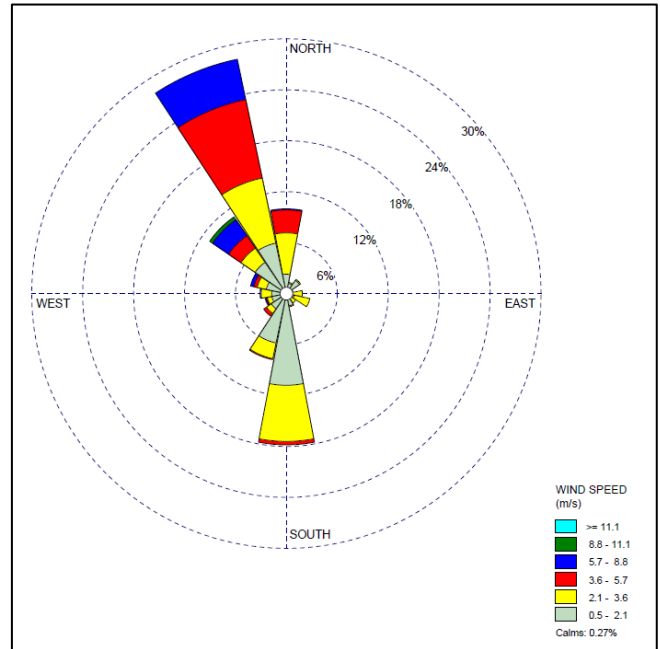


Figure 2: Charlton Ridge Wind Rose – May 2019

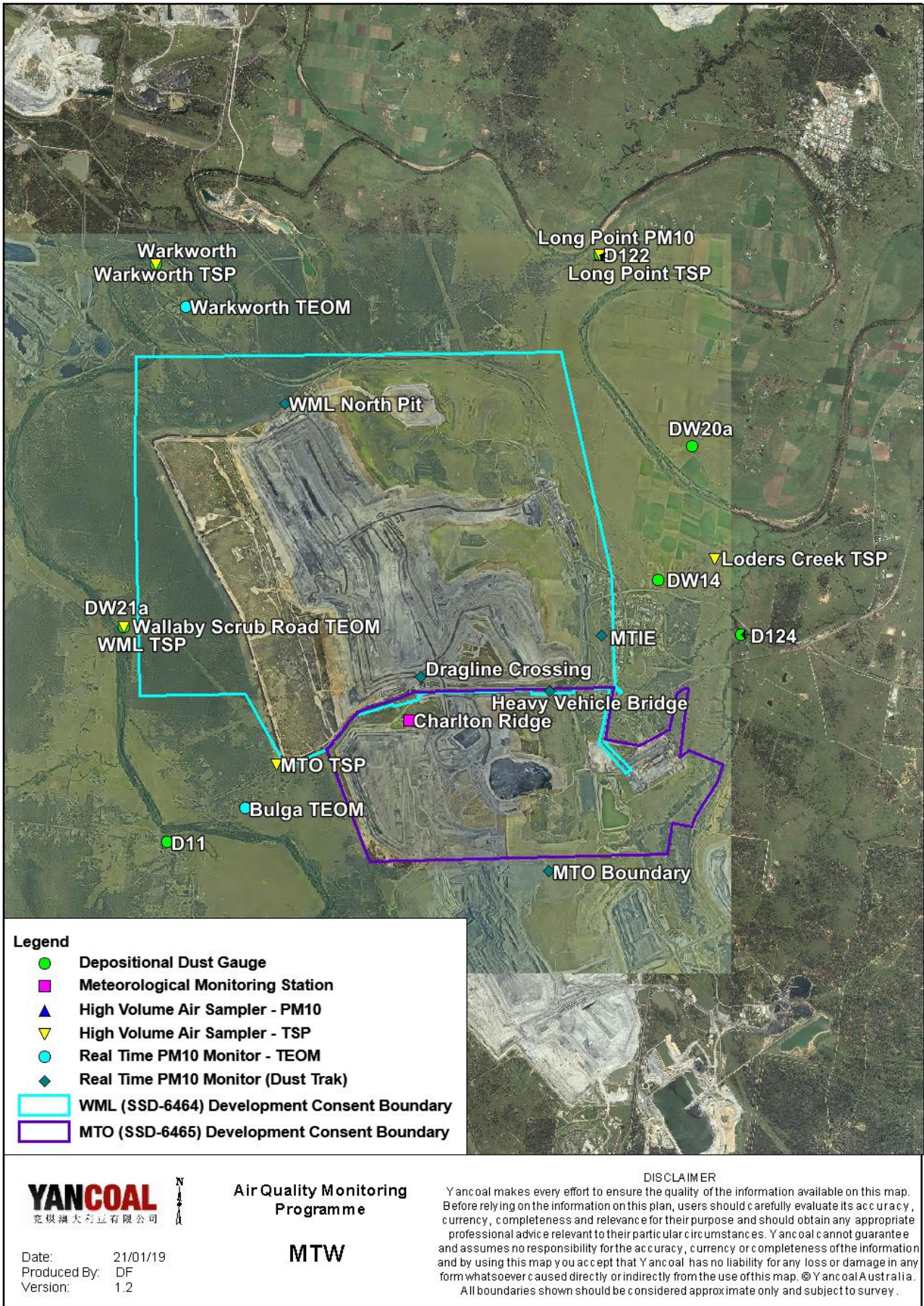


Figure 3: Air Quality Monitoring Locations

2.2 Depositional Dust

To monitor air quality, MTW operates and maintains a network of seven depositional dust gauges, situated on private and mine owned land surrounding MTW.

Figure 4 displays insoluble solids results from depositional dust gauges during the reporting period compared against the year-to-date average and the annual impact assessment criteria.

During the reporting period the D124 monitor recorded a monthly result above the long-term impact assessment criteria of 4.0 g/m² per month. Field notes associated with D124 confirm the presence of insects. As such the result is considered contaminated and will be excluded from calculation of the annual average.

An annual assessment of MTW’s compliance with the Long-Term Impact Assessment Criteria will be provided in the 2019 Annual Review Report.

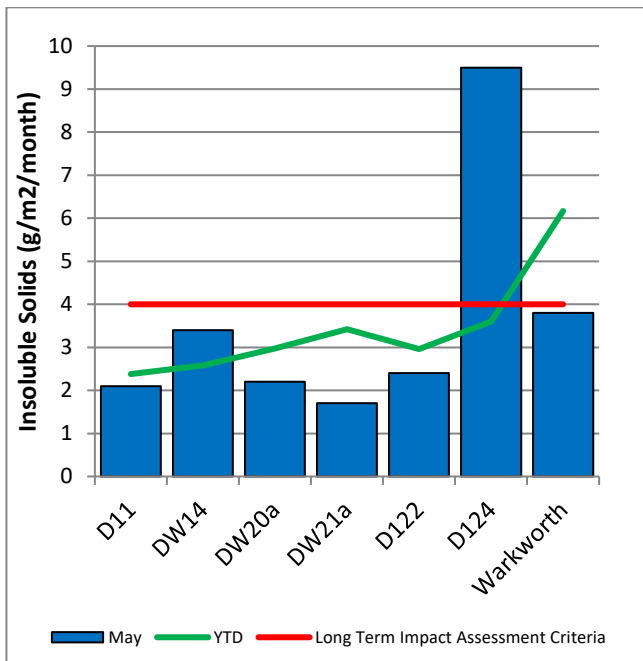


Figure 4: Depositional Dust – May 2019

2.3 Suspended Particulates

Suspended particulates are measured by a network of High Volume Air Samplers (HVAS) measuring Total Suspended Particulates (TSP) and Particulate Matter <10µm (PM₁₀). The location of these monitors can be found in **Figure 3**. Each HVAS was run for 24 hours on a six-day cycle in accordance with EPA requirements.

2.3.1 HVAS PM₁₀ Results

Figure 5 shows the individual PM₁₀ results at each monitoring station against the short-term impact assessment criteria of 50µg/m³.

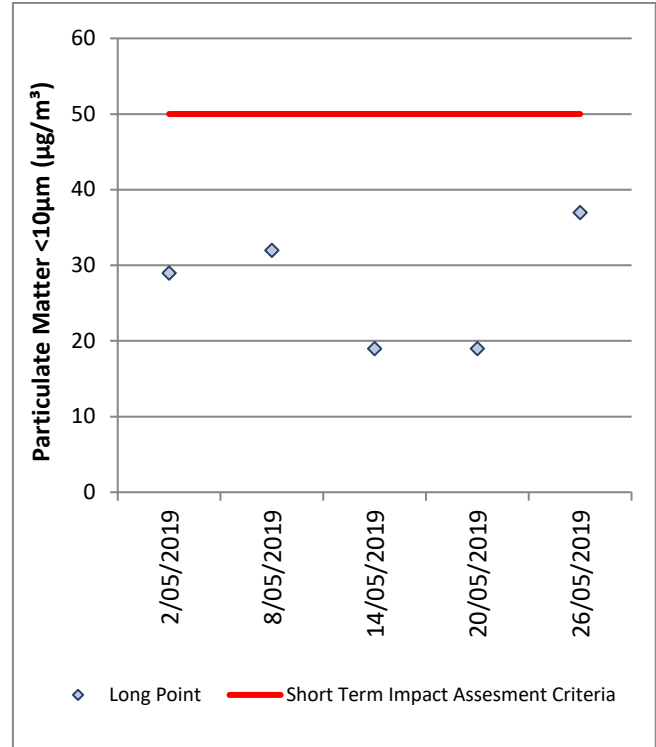


Figure 5: Individual PM₁₀ Results – May 2019

Figure 6 shows the annual average PM₁₀ results against the long term impact assessment criteria.

An assessment of MTW’s contribution to the long term assessment criteria will be reported in the 2019 Annual Review Report.

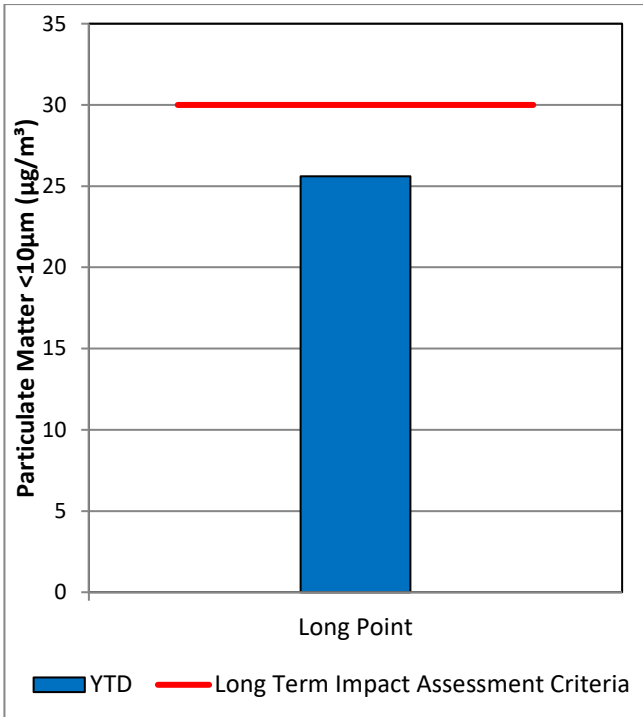


Figure 6: Annual Average PM₁₀ – May 2019

2.3.2 TSP Results

Figure 7 shows the annual average TSP results compared against the long-term impact assessment criteria of 90µg/m³.

An assessment of MTW’s contribution to the long-term assessment criteria will be reported in the 2019 Annual Review Report.

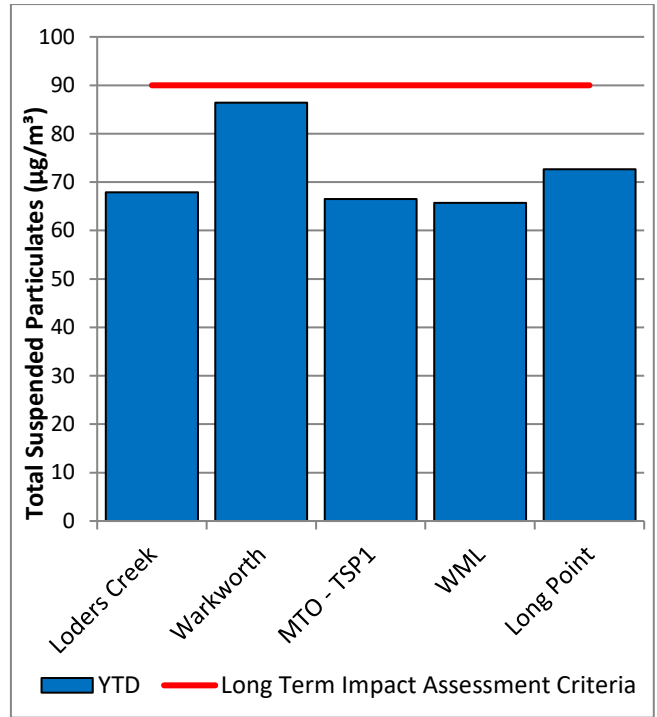


Figure 7: Annual Average Total Suspended Particulates – May 2019

2.3.3 Real Time PM₁₀ Results

MTW maintains a network of real time PM₁₀ monitors. The real time air quality monitoring stations continuously log information and transmit data to a central database, generating internal alerts when particulate matter levels exceed internal trigger limits.

Results for real time dust sampling are shown in Figure 8, including the daily 24-hour average PM₁₀ result and the annual PM₁₀ average.

2.3.4 Real Time Alarms for Air Quality

During May, the real time monitoring system generated 88 automated air quality related alerts, including 10 alerts for adverse meteorological conditions and 78 alerts for elevated PM₁₀ levels.

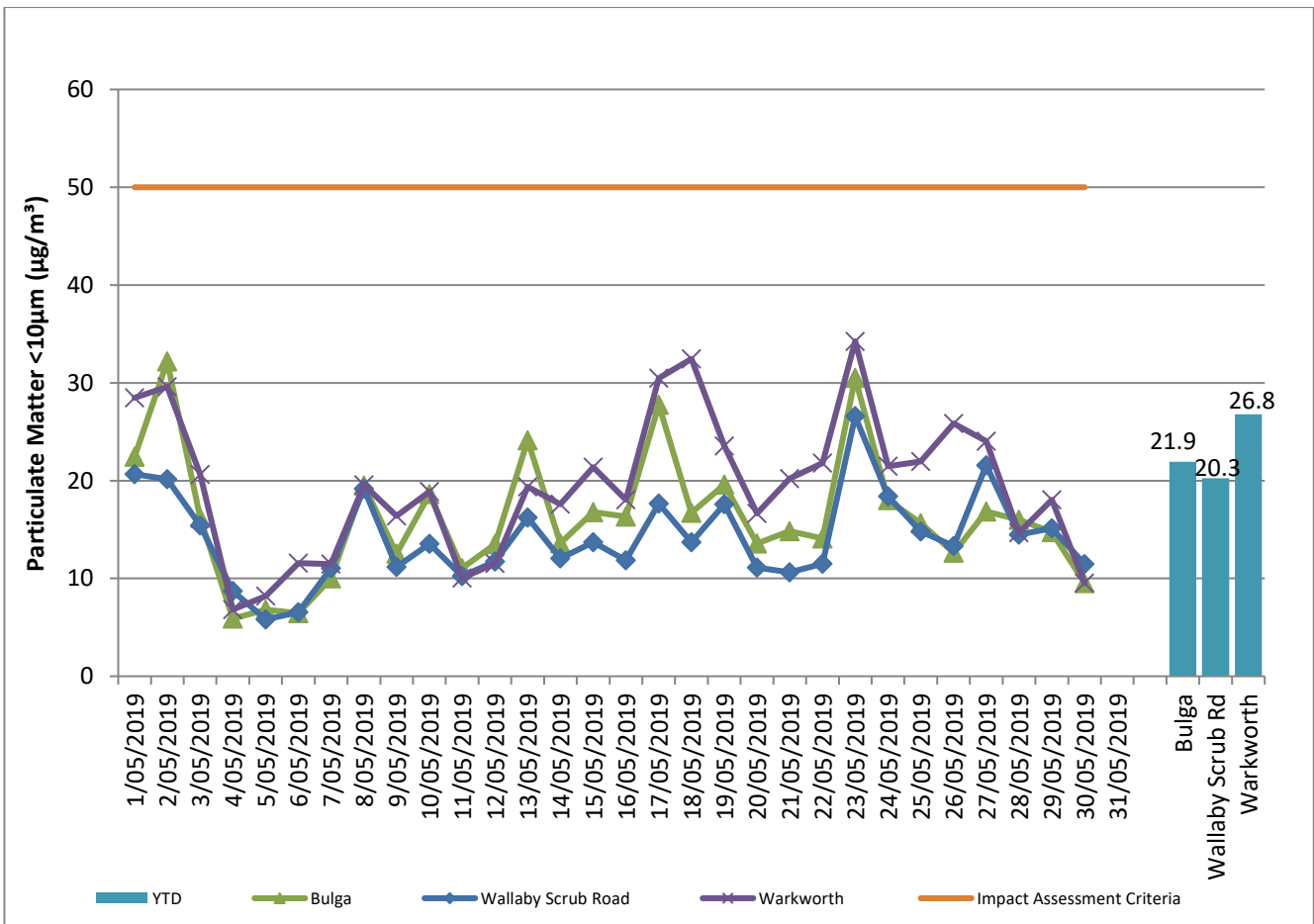


Figure 8: Real Time PM₁₀ daily 24hr average (line graphs) and YTD annual average (column graphs) – May 2019

3.0 WATER QUALITY

MTW maintains a network of surface water and groundwater monitoring sites.

3.1 Surface Water

Monitoring is conducted at mine site dams and surrounding natural watercourses.

Surface water courses are sampled on a monthly or quarterly sampling regime. Water quality is evaluated through the parameters of pH, Electrical Conductivity (EC) and Total Suspended Solids (TSS). The Hunter River and the Wollombi Brook are sampled both upstream and downstream of mining operations, to monitor the potential impact of mining on the river system. Other Hunter River tributaries are also monitored.

Results of monitoring are reported quarterly, next available in the June 2019 report.

3.2 Groundwater Monitoring

Groundwater monitoring is undertaken on a quarterly basis in accordance with the MTW Groundwater Monitoring Programme.

Groundwater results are reported quarterly, next available in the June 2019 report.

3.3 HRSTS Discharge

MTW participates in the Hunter River Salinity Trading Scheme (HRSTS), allowing discharge from licensed discharge points located at Dam 1N and Dam 9S. Discharges can only take place subject to HRSTS regulations.

During the reporting period no water was discharged under the HRSTS.

4.0 BLAST MONITORING

MTW have a network of six blast monitoring units. These are located at nearby privately owned residences and function as regulatory compliance monitors.

The location of these monitors can be found in **Figure 15**.

4.1 Blast Monitoring Results

During May 2019, 22 blasts were initiated at MTW. **Figure 9** to **Figure 14** show the blast monitoring results for the reporting period against the impact assessment criteria. The criteria are summarised in **Table 2**.

Table 2: Blasting Limits

Airblast Overpressure (dB(L))	Comments
115	5% of the total number of blasts in a 12 month period
120	0%
Ground Vibration (mm/s)	Comments
5	5% of the total number of blasts in a 12 month period
10	0%

During the reporting period two blasts exceeded the 115dB(L) threshold for airblast overpressure, one at the MTIE monitoring location and one at the Abbey Green monitoring location. No blast exceeded the 5mm/s criteria for ground vibration.

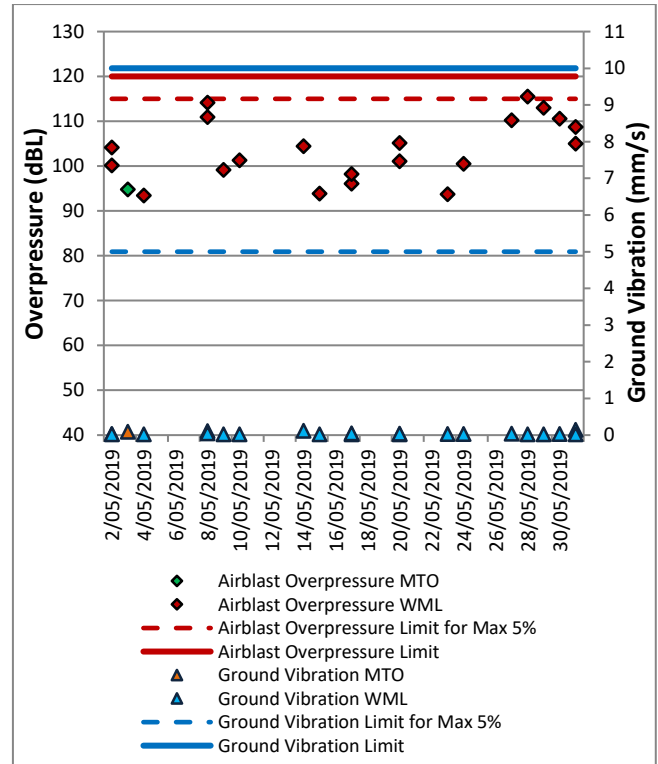


Figure 9: Abbey Green Blast Monitoring Results – May 2019

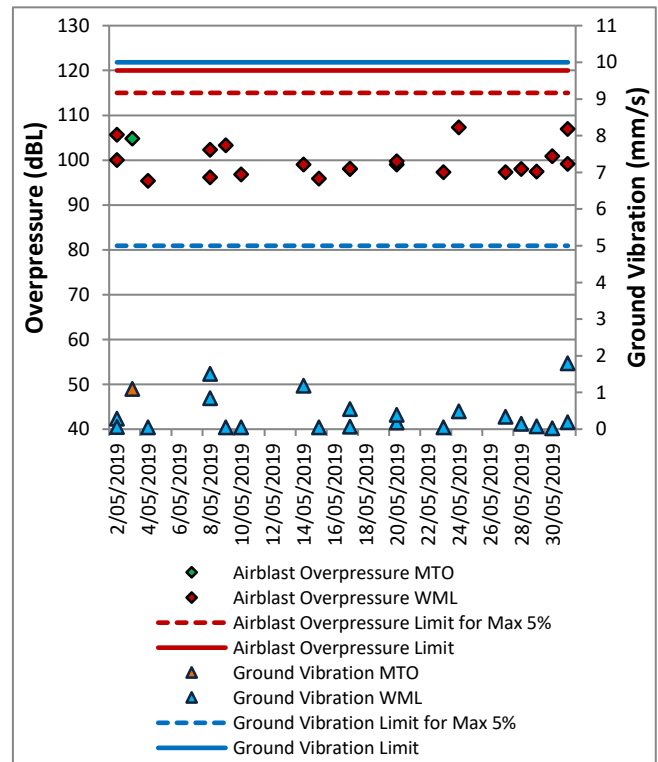


Figure 10: Bulga Village Blast Monitoring Results – May 2019

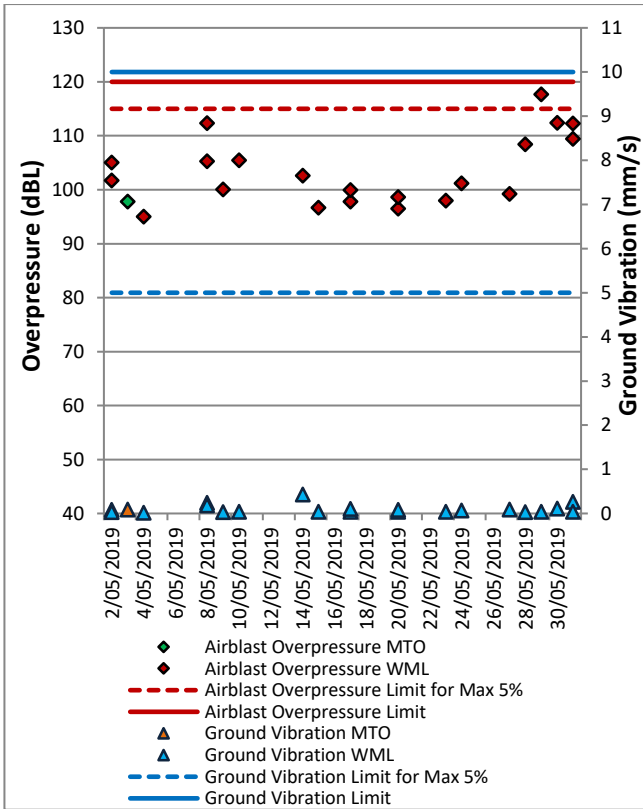


Figure 11: MTIE Blast Monitoring Results – May 2019

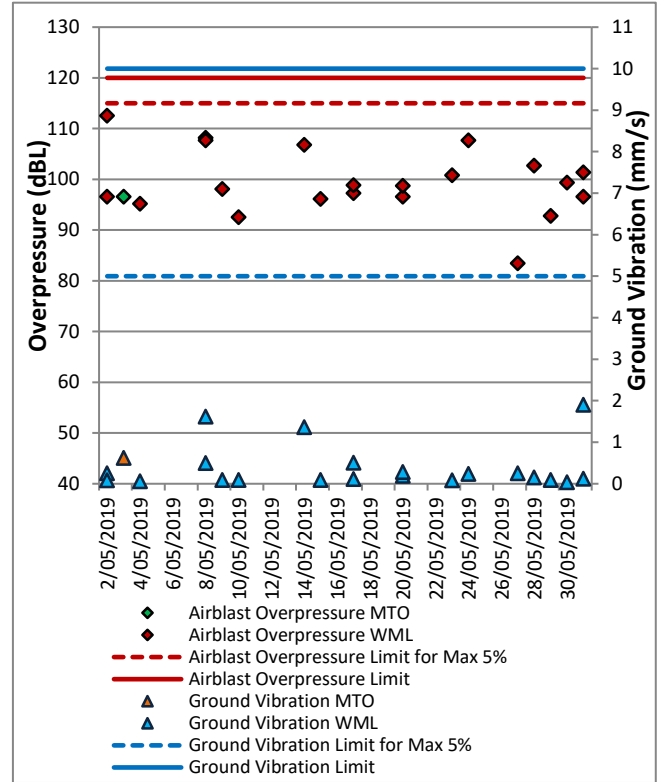


Figure 13: Wambo Road Blast Monitoring Results – May 2019

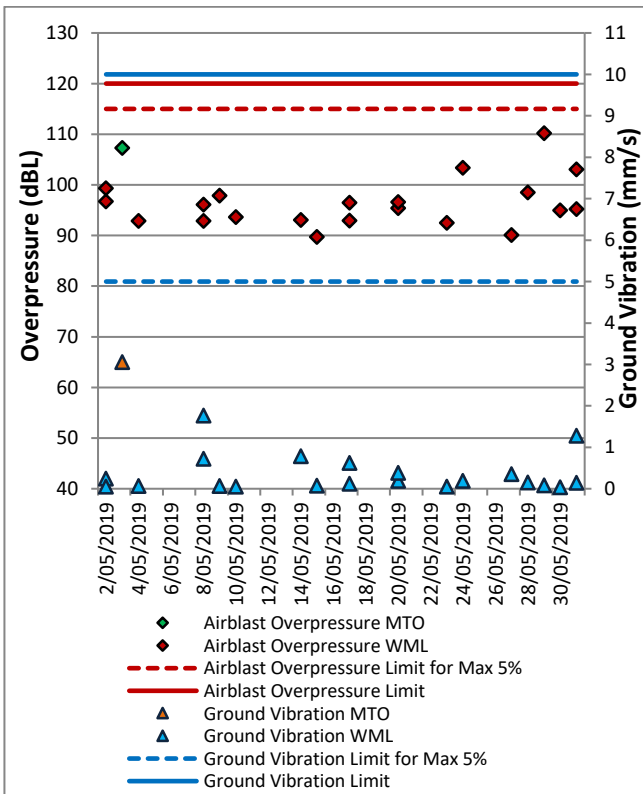


Figure 12: Wollemi Peak Road Blast Monitoring Results – May 2019

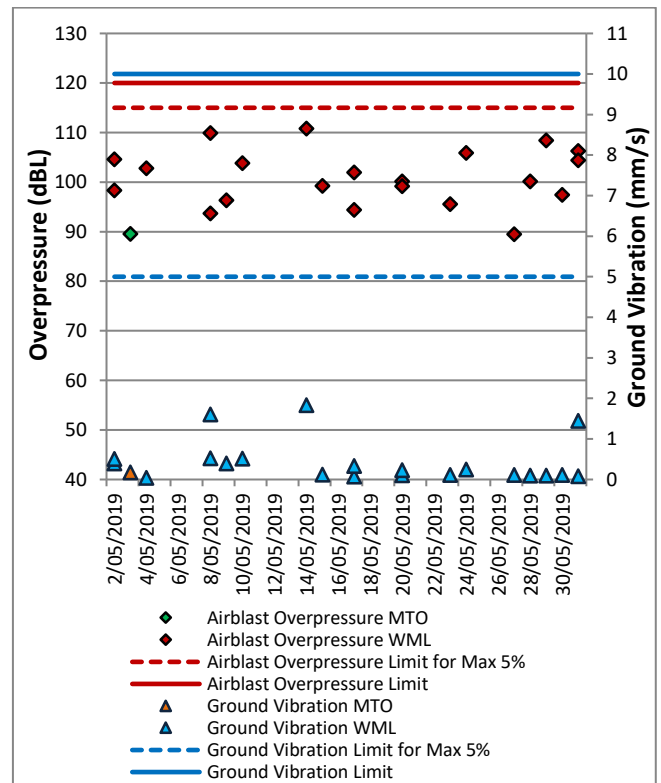


Figure 14: Warkworth Blast Monitoring Results – May 2019

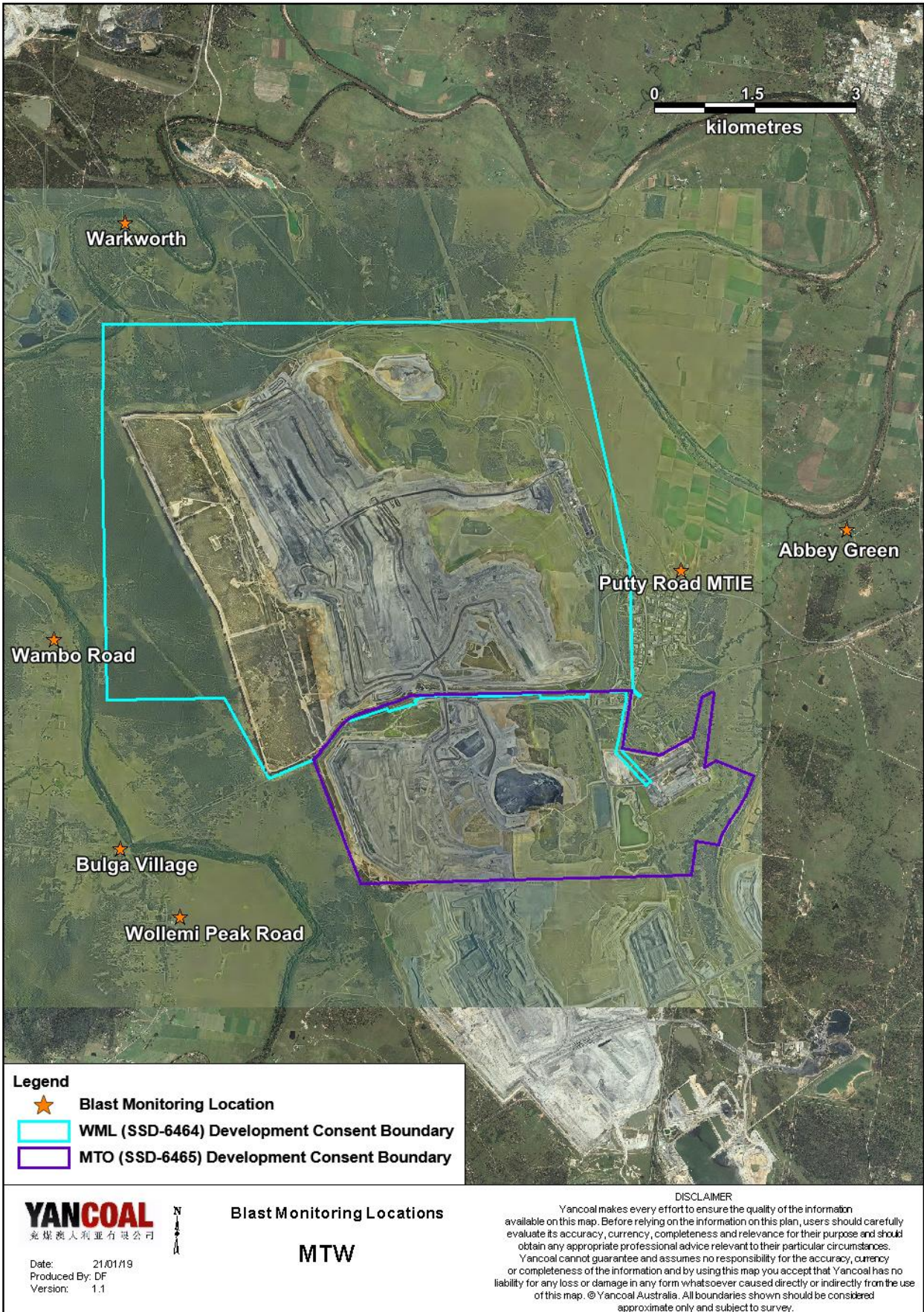


Figure 15: MTW Blast Monitoring Location Plan

5.0 NOISE

Routine attended noise monitoring is carried out in accordance with the MTW Noise Management Plan. A review against EIS predictions will be reported in the Annual Review. The purpose of the noise surveys is to quantify and describe the acoustic environment around the site and compare results with specified limits. Real time noise monitoring also occurs at five sites surrounding MTW. Noise monitoring locations are displayed in **Figure 16**.

Attended monitoring was conducted at receiver locations surrounding MTW on the night of 7 May 2019. All measurements complied with the relevant criteria. Results are detailed in **Table 3 to Table 6**.

5.1.1 WML Noise Assessment

Compliance assessments undertaken against the WML noise criteria are presented in **Tables 3 and 4**.

5.1 Attended Noise Monitoring Results

Table 3: L_{Aeq, 15 minute} Warkworth Impact Assessment Criteria – May 2019

Location	Date and Time	Wind Speed (m/s)	Stability Class	Criterion dB(A)	Criterion Applies? ¹	WML L _{Aeq} dB ^{2,3}	Exceedance ^{3,4}
Bulga RFS	7/05/2019 21:00	2.4	D	37	Yes	29	Nil
Bulga Village	7/05/2019 23:07	4.7	D	38	No	<25	NA
Gouldsville	8/05/2019 0:48	2.9	D	38	Yes	<25	Nil
Inlet Rd	7/05/2019 21:21	2.4	D	37	Yes	IA	Nil
Inlet Rd West	7/05/2019 21:00	2.4	D	35	Yes	IA	Nil
Long Point	8/05/2019 0:27	2.7	F	35	No	IA	NA
South Bulga	7/05/2019 21:22	2	F	35	Yes	NM	Nil
Wambo Road	7/05/2019 22:45	5.3	D	38	No	<25	NA

Notes:

1. Noise emission limits apply during all meteorological conditions except the following: during periods of rain or hail; average wind speed at microphone height exceeds 5 m/s; wind speeds greater than 3 m/s measured at 10 metres above ground level; stability category F temperature inversion conditions and wind speeds greater than 2m/s at 10m above ground level; or stability category G temperature inversion conditions. Criterion may or may not apply due to rounding of meteorological data values;
2. Estimated or measured L_{Aeq,15minute} attributed to WML;
3. Bold results in red are possible exceedances of relevant criteria; and
4. NA in exceedance column means atmospheric conditions outside conditions specified in development consent and so criterion is not applicable.

Table 4: L_{A1, 1 minute} Warkworth - Impact Assessment Criteria – May 2019

Location	Date and Time	Wind Speed (m/s)	Stability Class	Criterion dB(A)	Criterion Applies? ¹	WML L _{A1, 1min} dB ^{2,3}	Exceedance ^{3,4}
Bulga RFS	7/05/2019 21:00	2.4	D	47	Yes	35	Nil
Bulga Village	7/05/2019 23:07	4.7	D	48	No	36	NA
Gouldsville	8/05/2019 0:48	2.9	D	48	Yes	<25	Nil
Inlet Rd	7/05/2019 21:21	2.4	D	47	Yes	IA	Nil
Inlet Rd West	7/05/2019 21:00	2.4	D	45	Yes	IA	Nil
Long Point	8/05/2019 0:27	2.7	F	45	No	IA	NA
South Bulga	7/05/2019 21:22	2	F	45	Yes	NM	Nil
Wambo Road	7/05/2019 22:45	5.3	D	48	No	<25	NA

Notes:

1. Noise emission limits apply during all meteorological conditions except the following: during periods of rain or hail; average wind speed at microphone height exceeds 5 m/s; wind speeds greater than 3 m/s measured at 10 metres above ground level; stability category F temperature inversion conditions and wind speeds greater than 2m/s at 10m above ground level; or stability category G temperature inversion conditions. Criterion may or may not apply due to rounding of meteorological data values;
2. Estimated or measured L_{A1,1minute} attributed to WML;
3. Bold results in red are possible exceedances of relevant criteria; and
4. NA in exceedance column means atmospheric conditions outside conditions specified in development consent and so criterion is not applicable.

5.1.3 MTO Noise Assessment

Compliance assessments undertaken against the MTO noise criteria are presented in **Table 5** and **6**.

Table 5: L_{Aeq, 15minute} Mount Thorley - Impact Assessment Criteria – May 2019

Location	Date and Time	Wind Speed (m/s)	Stability Class	Criterion dB	Criterion Applies? ¹	MTO L _{Aeq} dB ^{2,3}	Exceedance ^{3,4}
Bulga RFS	7/05/2019 21:00	2.4	D	37	Yes	IA	Nil
Bulga Village	7/05/2019 23:07	4.7	D	38	No	IA	NA
Gouldsville	8/05/2019 0:48	2.9	D	35	Yes	IA	Nil
Inlet Rd	7/05/2019 21:21	2.4	D	37	Yes	IA	Nil
Inlet Rd West	7/05/2019 21:00	2.4	D	35	Yes	IA	Nil
Long Point	8/05/2019 0:27	2.7	F	35	No	IA	NA
South Bulga	7/05/2019 21:22	2	F	36	Yes	25	Nil
Wambo Road	7/05/2019 22:45	5.3	D	38	No	IA	NA

Notes:

1. Noise emission limits apply during all meteorological conditions except the following: during periods of rain or hail; average wind speed at microphone height exceeds 5 m/s; wind speeds greater than 3 m/s measured at 10 metres above ground level; stability category F temperature inversion conditions and wind speeds greater than 2m/s at 10m above ground level; or stability category G temperature inversion conditions. Criterion may or may not apply due to rounding of meteorological data values;

2. Estimated or measured L_{Aeq,15minute} attributed to MTO;

3. Bold results in red are possible exceedances of relevant criteria; and

4. NA in exceedance column means atmospheric conditions outside conditions specified in project approval and so criterion is not applicable.

Table 6: L_{A1, 1Minute} Mount Thorley - Impact Assessment Criteria – May 2019

Location	Date and Time	Wind Speed (m/s)	Stability Class	Criterion dB	Criterion Applies? ¹	MTO L _{A1, 1min} dB ^{2,3}	Exceedance ^{3,4}
Bulga RFS	7/05/2019 21:00	2.4	D	47	Yes	IA	Nil
Bulga Village	7/05/2019 23:07	4.7	D	48	No	IA	NA
Gouldsville	8/05/2019 0:48	2.9	D	45	Yes	IA	Nil
Inlet Rd	7/05/2019 21:21	2.4	D	47	Yes	IA	Nil
Inlet Rd West	7/05/2019 21:00	2.4	D	45	Yes	IA	Nil
Long Point	8/05/2019 0:27	2.7	F	45	No	IA	NA
South Bulga	7/05/2019 21:22	2	F	46	Yes	30	Nil
Wambo Road	7/05/2019 22:45	5.3	D	48	No	IA	NA

Notes

1. Noise emission limits apply during all meteorological conditions except the following: during periods of rain or hail; average wind speed at microphone height exceeds 5 m/s; wind speeds greater than 3 m/s measured at 10 metres above ground level; stability category F temperature inversion conditions and wind speeds greater than 2m/s at 10m above ground level; or stability category G temperature inversion conditions. Criterion may or may not apply due to rounding of meteorological data values;

2. Estimated or measured L_{A1,1minute} attributed to MTO;

3. Bold results in red are possible exceedances of relevant criteria; and

4. NA in exceedance column means atmospheric conditions outside conditions specified in project approval and so criterion is not applicable.

5.1.4 NPfI Low Frequency Assessment

In accordance with the requirements of the EPA's Noise Policy for Industry (NPfI), the applicability of the low frequency

modification penalty has been assessed. There were no noise measurements taken during the reporting period which required the penalty to be applied. The assessment for low frequency noise is shown in **Table 7**.

Table 7: Low Frequency Noise Modifying Factor Assessment – May 2019

Location	Date and Time	Measured Site Only LA _{eq} dB (WML/MTO)	Site Only L _{Ceq} dB ¹ (WML/MTO)	Site Only L _{Ceq} – LA _{eq} dB ^{1,2} (WML/MTO)	Result Max exceedance of ref spectrum dB (WML/MTO) ^{1,3}	Penalty dB(A) ¹	Exceedance
Bulga RFS	7/05/2019 21:00	29/IA	NA/NA	NA/NA	NA/NA	NA/NA	NA
Bulga Village	7/05/2019 23:07	<25/IA	NA/NA	NA/NA	NA/NA	NA/NA	NA
Gouldsville	8/05/2019 0:48	<25/IA	NA/NA	NA/NA	NA/NA	NA/NA	NA
Inlet Rd	7/05/2019 21:21	IA/IA	NA/NA	NA/NA	NA/NA	NA/NA	NA
Inlet Rd West	7/05/2019 21:00	IA/IA	NA/NA	NA/NA	NA/NA	NA/NA	NA
Long Point	8/05/2019 0:27	IA/IA	NA/NA	NA/NA	NA/NA	NA/NA	NA
South Bulga	7/05/2019 21:22	NM/25	NA/NA	NA/NA	NA/NA	NA/NA	NA
Wambo Road	7/05/2019 22:45	<25/IA	NA/NA	NA/NA	NA/NA	NA/NA	NA

Notes:

1. Where it is not possible to determine the site-only result due to the presence of other low-frequency noise sources occurring during the measurement, or where criteria were not applicable due to meteorological conditions, this is noted as NA (not available) and no further assessment has been undertaken;
2. As per NPfI, if L_{Ceq} – LA_{eq} ≥ 15 dB further assessment of low-frequency noise required; and
3. As per NPfI, compare measured spectrum against reference spectrum to determine if the low-frequency modifying factor is triggered and application of penalty is required.

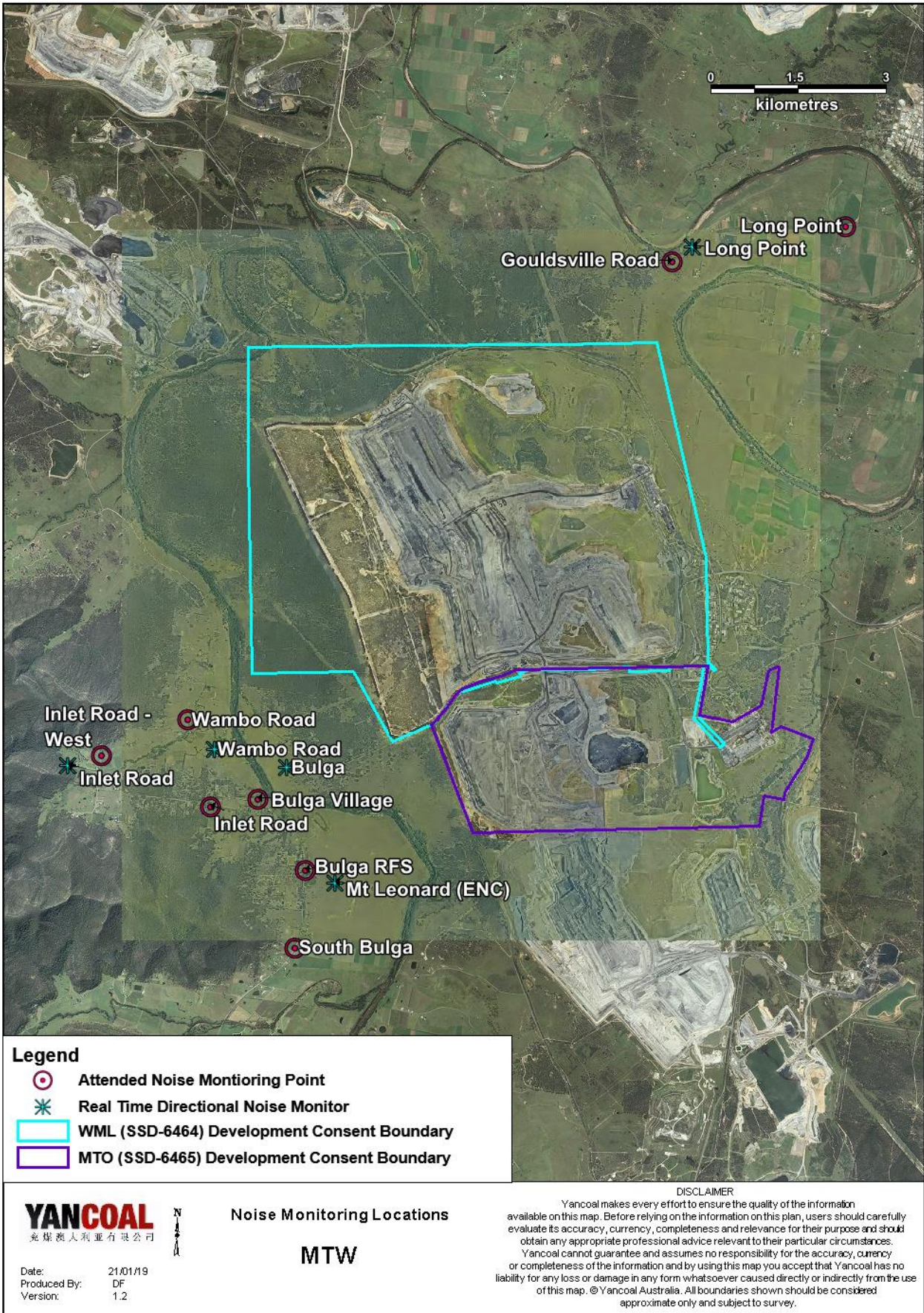


Figure 16: Noise Monitoring Location Plan

5.2 Noise Management Measures

A program of targeted supplementary attended noise monitoring is in place at MTW, supported by the real-time directional monitoring network and ensuring the highest level of noise management is maintained. The supplementary program is undertaken by MTW personnel and involves:

- Routine inspections from both inside and outside the mine boundary;
- Routine and as-required handheld noise assessments (undertaken in response to noise alarm and/or community complaint), comparing measured levels against consent noise limits; and
- Validation monitoring following operational modifications to assess the adequacy of the modifications.

Where a noise assessment identifies noise emissions which are exceeding the relevant noise limit(s) for any particular residence, modifications will be made so as to ensure that the noise event is resolved within 75 minutes of identification. The actions taken are commensurate with the nature and severity of the noise event, but can include:

- Changing the haul route to a less noise sensitive haul;
- Changing dump locations (in-pit or less exposed dump option);
- Reducing equipment numbers;
- Shut down of task; or
- Site shut down.

A summary of these assessments undertaken during May are provided in **Table 8**.

Table 8: Supplementary Attended Noise Monitoring Data – May 2019

No. of assessments	No. of assessments > trigger	No. of nights where assessments > trigger	% greater than trigger
715	5	3	0.7

Note: Measurements are taken under all meteorological conditions, including conditions under which the consent noise criteria do not apply.

6.0 OPERATIONAL DOWNTIME

During May, a total of 403 hours of equipment downtime was logged in response to environmental events such as dust, noise and adverse meteorological conditions. Operational downtime by equipment type is shown in **Figure 17**.

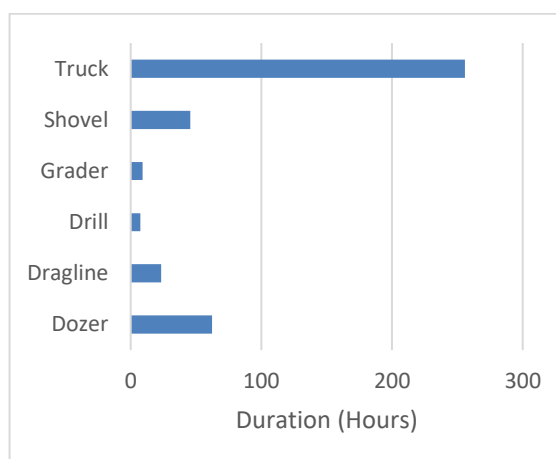


Figure 17: Operational Downtime by Equipment Type – May 2019

7.0 REHABILITATION

During May 2019, 22.8 Ha of land was released, 8.6 Ha of land was bulk shaped and 15.9 Ha of land was composted.

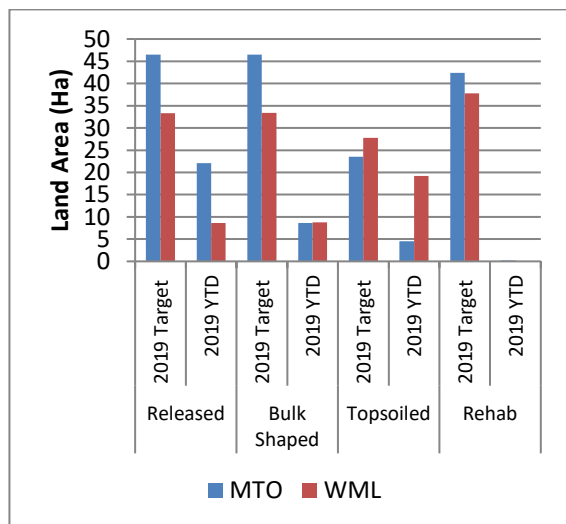


Figure 18: Rehabilitation YTD – May 2019

8.0 ENVIRONMENTAL INCIDENTS

There were no environmental incidents recorded during the reporting period.

9.0 COMPLAINTS

During the reporting period 32 complaints were received. Details of these complaints are shown in Table 9 below.

Table 9: Complaints Summary YTD

	Noise	Dust	Blast	Lighting	Other	Total
January	7	6	9	3	0	25
February	14	16	11	2	0	43
March	20	8	4	2	0	34
April	15	5	3	6	0	29
May	15	8	6	3	0	32
June						
July						
August						
September						
October						
November						
December						
Total	71	43	33	16	0	163

Appendix A: Meteorological Data

Table 10: Meteorological Data – Charlton Ridge Meteorological Station – May 2019

Date	Air Temperature Maximum (°C)	Air Temperature Minimum (°C)	Relative Humidity Maximum (%)	Relative Humidity Minimum (%)	Wind Direction Average (°)	Wind Speed Average (m/sec)	Rainfall(mm)
1/05/2019	24	12	93	52	177	1.6	0.0
2/05/2019	24	14	89	53	157	1.3	0.0
3/05/2019	25	14	94	46	240	2.5	9.0
4/05/2019	22	11	97	32	190	2.0	4.8
5/05/2019	20	9	76	42	203	2.4	0.0
6/05/2019	21	8	83	37	238	2.0	0.0
7/05/2019	21	7	83	31	300	3.8	0.0
8/05/2019	21	9	56	27	283	2.7	0.0
9/05/2019	20	4	80	30	243	2.2	0.0
10/05/2019	17	5	87	47	257	3.0	0.6
11/05/2019	20	7	75	31	284	4.4	0.0
12/05/2019	21	5	82	34	223	2.3	0.0
13/05/2019	22	7	89	45	169	1.3	0.0
14/05/2019	25	11	89	21	208	2.0	0.0
15/05/2019	23	8	87	42	161	2.0	0.0
16/05/2019	22	9	91	43	156	2.3	0.0
17/05/2019	23	9	88	42	167	1.6	0.0
18/05/2019	24	9	94	36	175	1.8	0.0
19/05/2019	22	11	94	41	175	2.1	0.0
20/05/2019	23	9	95	39	223	2.3	0.0
21/05/2019	25	9	88	35	228	2.0	0.0
22/05/2019	26	10	84	27	253	2.0	0.0
23/05/2019	23	12	91	45	178	1.5	0.0
24/05/2019	24	9	95	33	249	2.1	0.0
25/05/2019	23	6	84	24	297	2.7	0.0
26/05/2019	23	8	71	32	287	3.2	0.0
27/05/2019	19	6	80	30	298	5.3	0.8
28/05/2019	15	4	69	34	300	5.3	0.0
29/05/2019	16	9	59	40	309	6.7	0.0
30/05/2019	16	5	64	20	271	3.3	0.0
31/05/2019	17	2	76	35	295	3.7	0.0

“-“ Indicates that data was not available due to technical issues.