

ENVIRONMENTAL ASSESSMENT

Duralie Extension Project

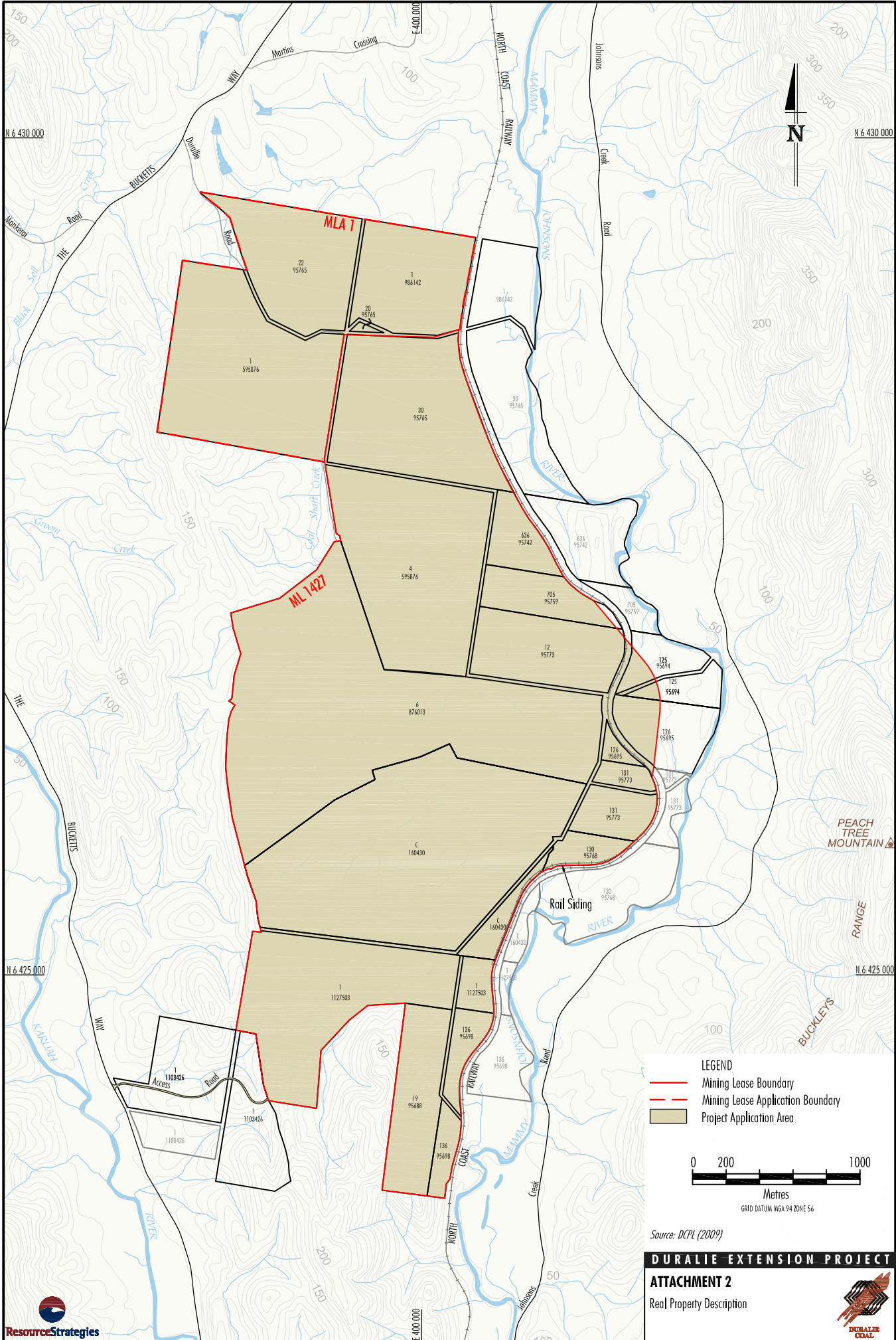
ATTACHMENT 2 PROJECT APPLICATION AREA AND REAL PROPERTY DESCRIPTIONS



GLOUCESTER
COAL



ResourceStrategies



Tenure Type	Lot Number	Deposited Plan Number
FREEHOLD	1	595876
FREEHOLD	4	595876
FREEHOLD	6	876013
FREEHOLD	12	95773
FREEHOLD	19	95688
FREEHOLD	22	95765
FREEHOLD	Part of 1	1103426
FREEHOLD	Part of 1	1127503
FREEHOLD	Part of 1	986142
FREEHOLD	Part of 30	95765
FREEHOLD	Part of 125	95694
FREEHOLD	Part of 126	95695
FREEHOLD	Part of 130	95768
FREEHOLD	Part of 131	95773
FREEHOLD	Part of 136	95698
FREEHOLD	Part of 636	95742
FREEHOLD	Part of 705	95759
FREEHOLD	Part of C	160430
FREEHOLD (Great Lakes Council)	Severed land resumed for public road	N/A
FREEHOLD (Private subdivision road reserves or owned by Great Lakes Council)	Roads located within and between the above parcels of land	N/A
STATE RAIL AUTHORITY OF NSW	Rail corridor located within and adjacent to the above titles.	N/A