

Duralie Coal CCC Meeting

Presentation –
Company Report & Overview
of Activities

August 2024

Thomas Kirkwood
Environment & Community Superintendent

Table of Contents

1. Agenda Item 7a – Activities at the Mine
2. Agenda Item 7b – Environmental Reporting
3. Agenda Item 7c – Environmental Management Plans and Monitoring
4. Agenda Item 7d – Community Complaints
5. Agenda Item 7e – Community Programs



1. Activities at The Mine

Activities: December 2023 – June 2024

- Water management and dam dewatering works continued in H1 2024
- AD2 embankments seeded
- Geotechnical drilling completed
- Progressive irrigation infrastructure removal
- Topsoil sampling and analysis
- Rehabilitation maintenance
- Environmental monitoring and maintenance continues



Photo: Clareval Pit, June 2024.

2. Environmental Reporting & Regulators

Management Area	Project	Status
Reporting	<ul style="list-style-type: none"> Duralie Coal Mine Annual Review 2024 Duralie EPL 11701 Annual Return 2024 NPI and NGER reporting 2023 	<ul style="list-style-type: none"> The 2024 Duralie Coal Mine Annual Review is due for completion in September 2024. Once accepted by The Department of Planning and Environment the Annual Review will be distributed to the CCC members and placed on the Duralie Coal website. The Duralie EPL 11701 Annual Return is due for completion in September 2024. The Annual Return will be made available on the EPA's public register. The NPI and NGER annual reporting requirements for the Duralie Coal Mine are due for completion at the end of the financial year, NPI and NGER data is currently being prepared and will be lodged with the relevant government agencies.
Regulator	<ul style="list-style-type: none"> Environmental Management Plans – revision for closure Resource Regulator 	<ul style="list-style-type: none"> DCPL have completed revisions to the Duralie Environmental Management Plans to reflect the current closure status of the DCM. The revised plans have been progressively submitted to DPIE for approval, all submitted plans have now been approved and have been made public on the Duralie Coal Website. The Regulator (Mining Act Inspectorate) completed a site inspection in June 2024.

3. Environmental Management Plans & Monitoring

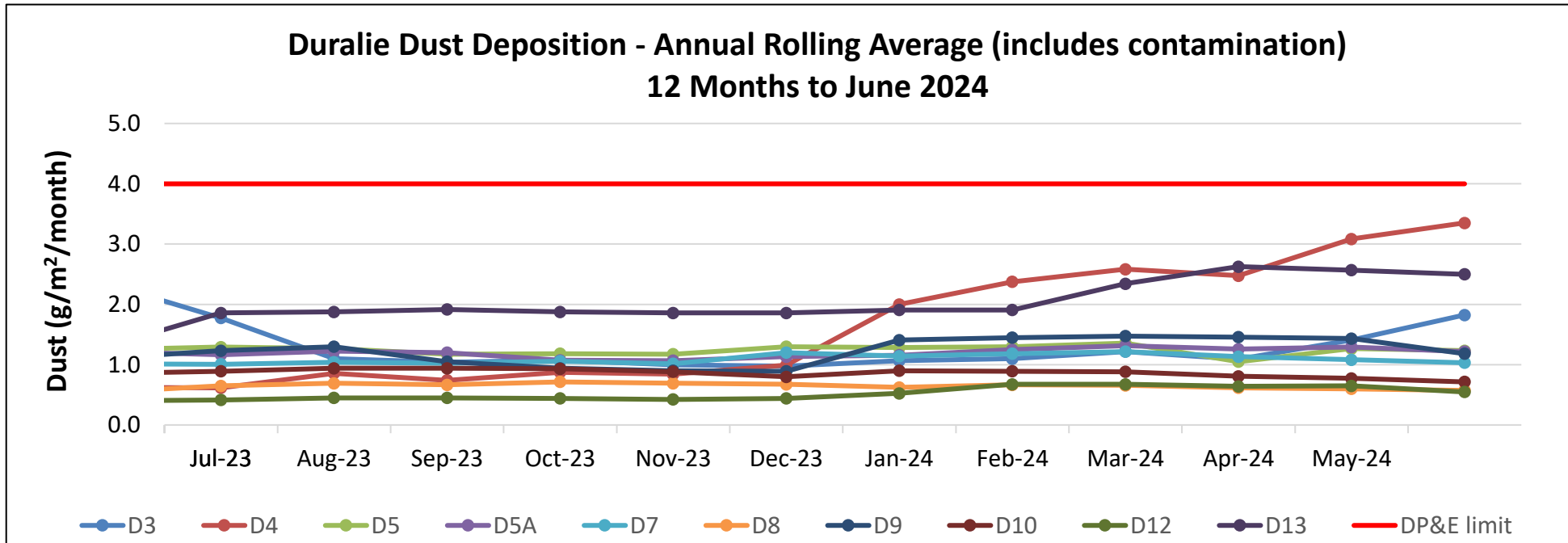
- a) Air Quality Management
- b) Water Management
- c) Rehabilitation Management
- d) Biodiversity Management
- e) Mine Closure Planning

contents



3a. Air Quality Management

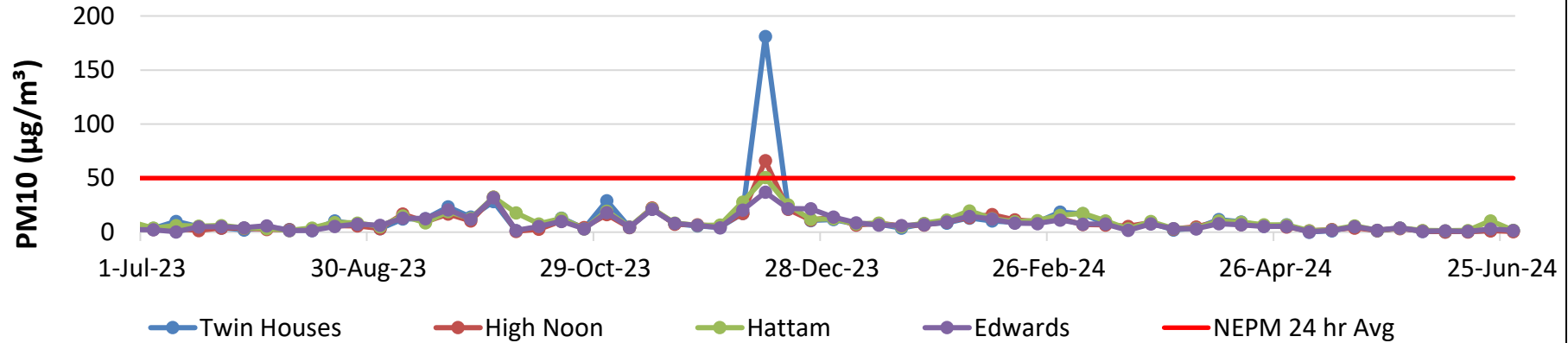
Management Area	Project	Status
Air quality monitoring	<ul style="list-style-type: none"> Real-time air quality system HVAS & dust gauge monitoring network. 	<ul style="list-style-type: none"> The real-time air quality TEOM monitor on Martins Crossing Rd continues to operate. General ambient PM10 dust levels have been slowly increasing due to decreased rainfall. No triggers have been received relating to bulk earthworks including rehandle and rehabilitation.



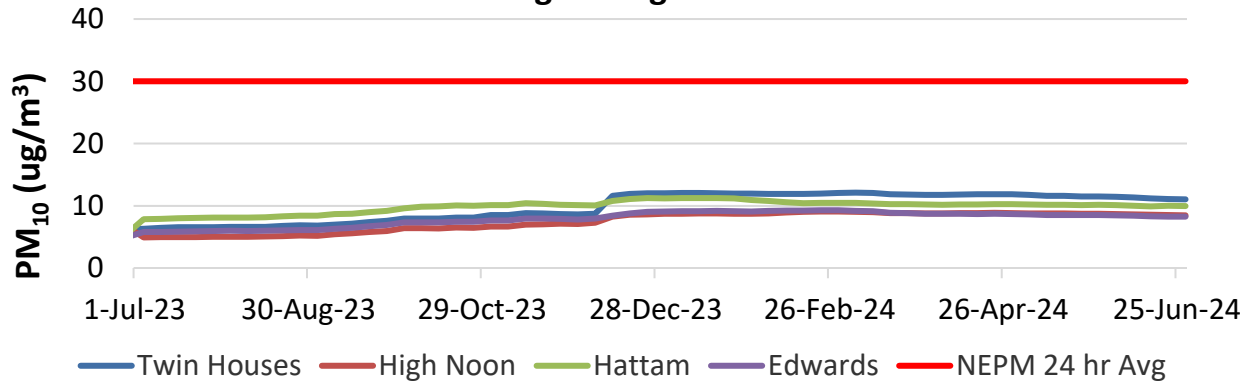
• Due to frequent contamination of dust gauges the HVAS results should also be used when interpreting results.

3a. Air Quality Management

**Duralie HVAS Monitoring - Particulate Matter (PM₁₀)
12 Months to June 2024**



**Duralie HVAS Monitoring (PM₁₀)
Annual Rolling Average - 12 Months to June 2024**



- Majority sites below DPIE limit. Typically low results during winter and higher during spring/summer.
- December 2023 elevated results attributed to bushfire on Johnsons Creek Road.
- HVAS results provide more reliable data compared to dust deposition results and should be referred to when interpreting dust emissions.

3b. Water Management

Management Area	Project	Status
Site Water Management	<ul style="list-style-type: none"> Water storage dewatering 	<ul style="list-style-type: none"> Dewatering of Main Water Dam (MWD) to Clareval Pit continued. AD2 minimum water level maintained. Clean water diversion drain maintenance completed.
Surface Water	<ul style="list-style-type: none"> Routine monitoring 	<ul style="list-style-type: none"> Above average rainfall has been received in the first half of the year. Routine and event surface water monitoring has been completed. All sites generally within Duralie water quality performance indicators. No obvious trending towards performance indicators.
Groundwater	<ul style="list-style-type: none"> Routine monitoring 	<ul style="list-style-type: none"> Routine monitoring has been completed and the results continue to indicate consistency with the model trends in the Environmental Assessment.



Photo: AD2 dewatered, August 2024.

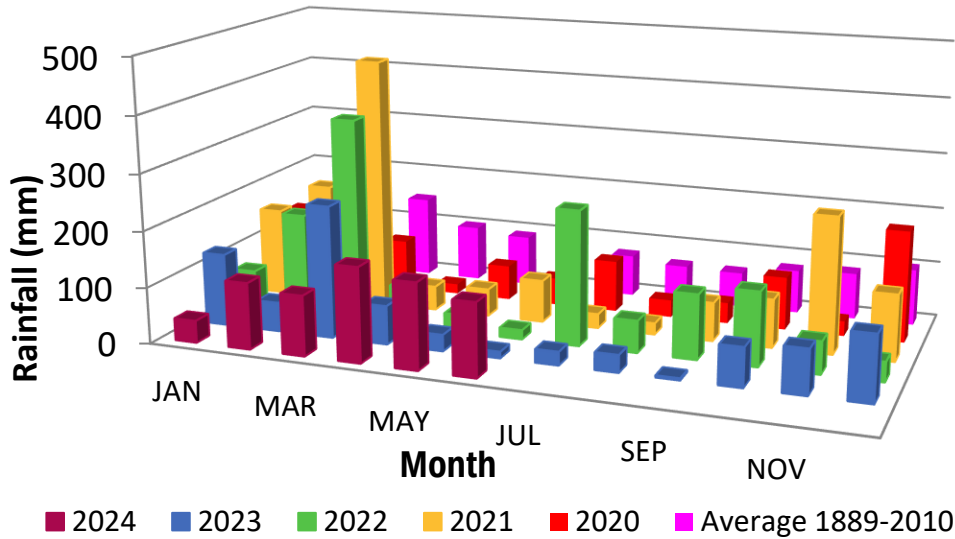


Photo: MWD, August 2024.

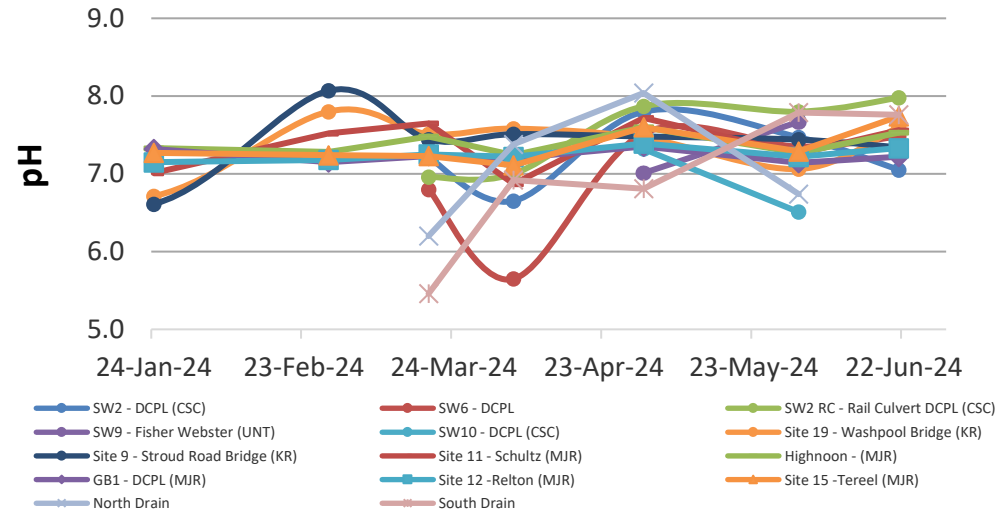


3b. Water Management

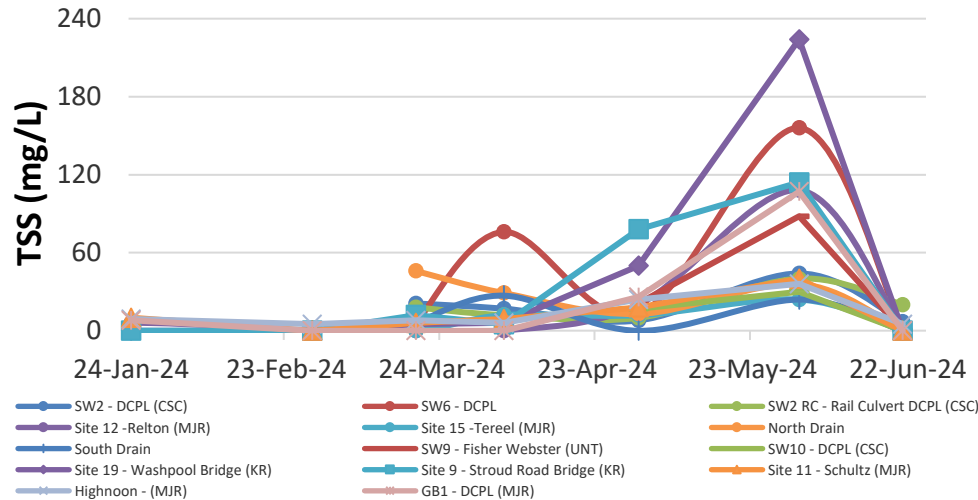
Duralie Mine - Monthly Rainfall



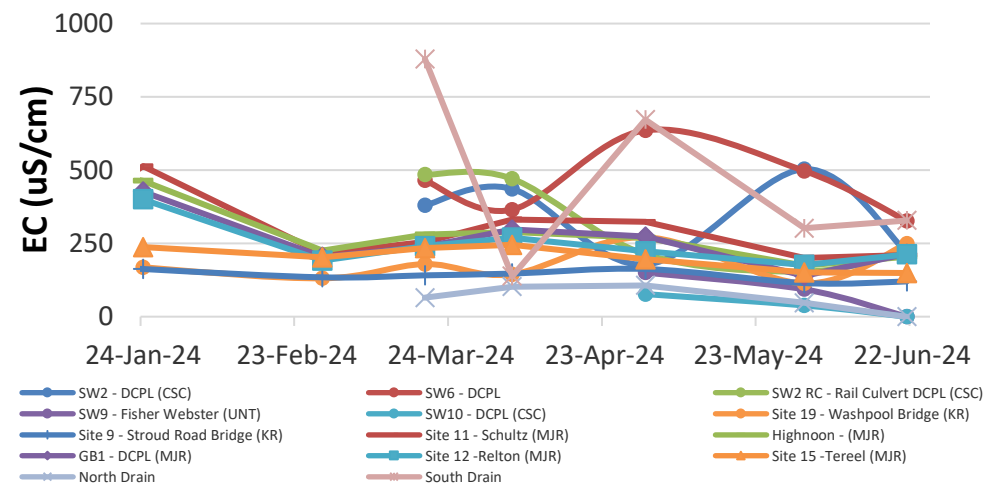
Duralie Surface Water Monitoring - pH 6 months to June 2024



Duralie Surface Water Monitoring - TSS 6 months to June 2024

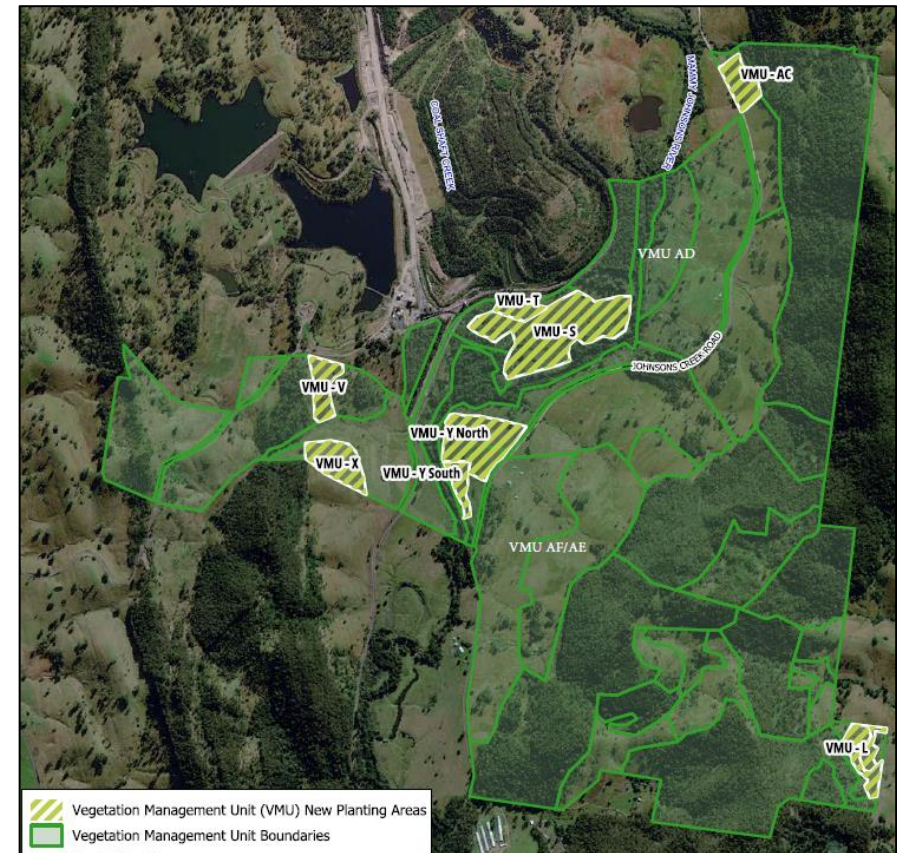


Duralie Surface Water Monitoring - EC 6 months to June 2024



3c. Rehabilitation and Biodiversity Management

Management Area	Project	Status
Biodiversity Offset	<ul style="list-style-type: none"> Revegetation Planning 	<ul style="list-style-type: none"> During May 2024 infill planting was completed within the Biodiversity Offsets, in total 7,632 plants were planted across the Duralie Offsets.
Rehabilitated Waste emplacements	<ul style="list-style-type: none"> Rehabilitation Maintenance 	<ul style="list-style-type: none"> Slashing of the Duralie pasture rehabilitation and removal of Acacia regrowth was completed in September 2023. Weed control including hand removal in the established native rehabilitation completed in July 2024.
Rehabilitation Monitoring	<ul style="list-style-type: none"> Vegetation Monitoring - Ecosystem Function Analysis 	<ul style="list-style-type: none"> Rehabilitation monitoring was completed in June 2024. The report findings and recommendations will be included within the Annual Rehabilitation report.



Map: 2024 Biodiversity Offset Revegetation Planting Areas

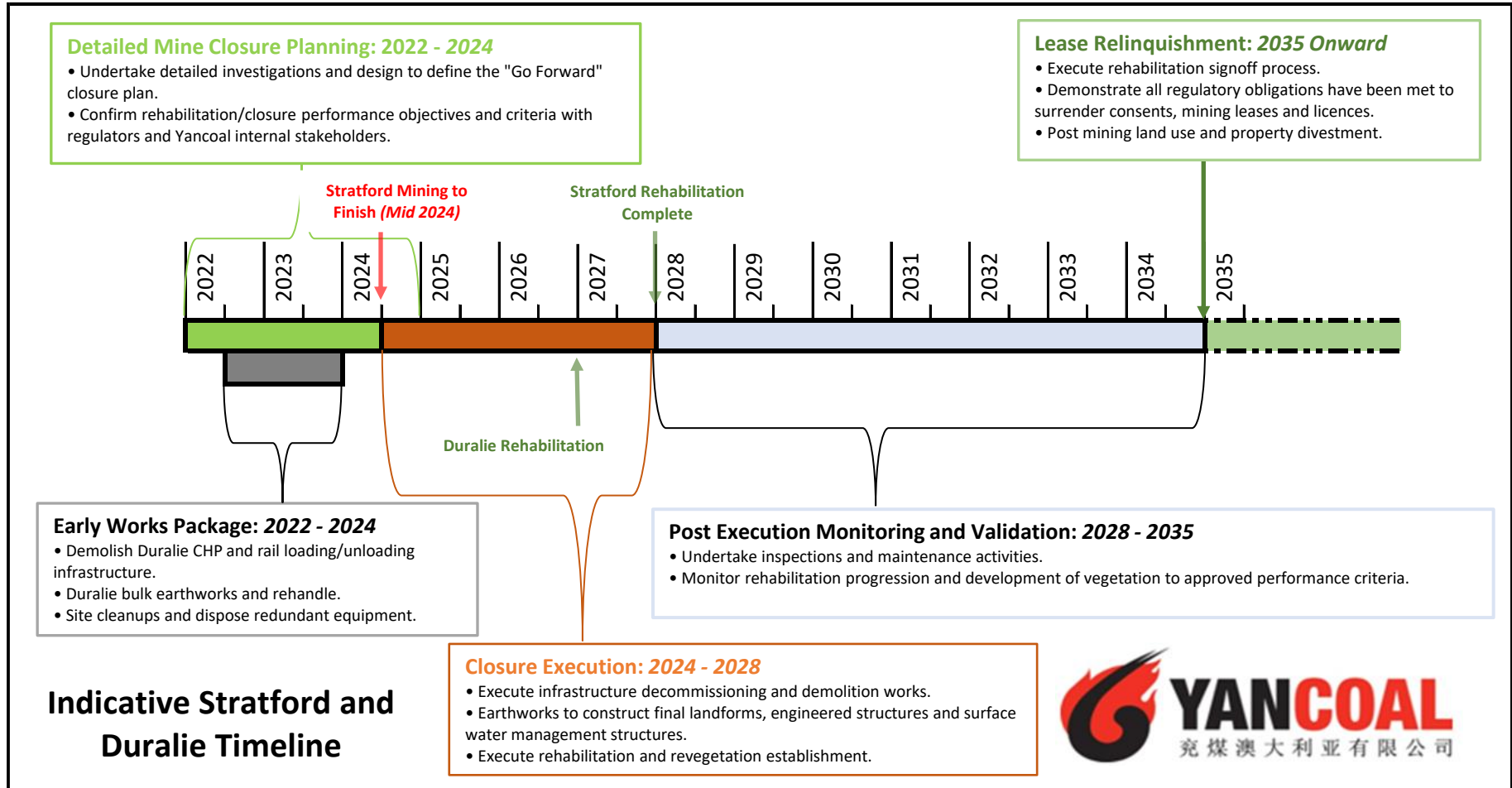
3e. Mine Closure – General Information

Mine Closure Progress

- Detailed Mine Closure Studies expected to be completed late 2024.
- Final Landform Rehabilitation Plan will be updated following completion of internal Detailed Mine Closure Plan.
- Detailed Mine Closure Plan will inform closure works with rehabilitation works to recommence following closure planning.
- Earthworks and rehabilitation activities are planned until approximately 2027.

Consent (SSD_4966) and Mining Leases continue to be in force until the site is rehabilitated to the satisfaction of DPHI and Resources Regulator.

3e. Mine Closure Planning



3e. Mine Closure Planning

Aspect	Status
Mine Closure Planning General	<ul style="list-style-type: none"> • Detailed Mine Closure studies currently expected to be completed in late 2024. • On-going iterations to optimise landform outcomes. • Detailed Mine Closure Planning will inform closure execution works with rehabilitation works to recommence following closure planning.
Rehabilitation	<ul style="list-style-type: none"> • Final Landform and Rehabilitation Plans (FLRP) will be revised following completion of Detailed Mine Closure Plan. • Yancoal and the Resources Regulator acknowledge that the currently proposed landforms may change as the closure planning program evolves.
Environmental Management Plans, Monitoring & Maintenance	<ul style="list-style-type: none"> • Further revision following completion of Detailed Mine Closure Plan. • DCPL will refine its monitoring and maintenance programs in consultation with the relevant government agencies as mine closure planning is finalised. • Post-closure monitoring and maintenance activities will continue until the specific completion criteria has been met.
Stakeholder and Community	<ul style="list-style-type: none"> • Communications with the workforce, CCC and other stakeholders will continue throughout closure. • Closure updates to the CCC will continue to be provided. • Community Support Program to prioritise community socio-economic transition projects.

3e. Mine Closure Planning

Aspect	Status
Final land use	<ul style="list-style-type: none">• The target post-mining land uses are Agricultural grazing, native vegetation and water bodies• Land uses are shown and defined in the RMP.
Final Landform	<ul style="list-style-type: none">• Landform refinements are continuing as part of the on-going mine closure planning.• Refinements are iterative, consider mine planning, landform stability, landscape evolution modelling, geochemistry and water management.• Final Landform Design revisions will be included in future FLRP revisions.
Final Voids	<ul style="list-style-type: none">• Final Void design and water modelling is progressively being revised as part of the Mine closure plans.• Design revisions and water modelling iterations will consider any landform refinements and study findings.

3e. Mine Closure Planning

Aspect	Status
Water	<ul style="list-style-type: none">• AD2 reseeded has commenced, with works to de-declared dam next year.• Investigating an option of further dam capacity reductions of MWD and AD2 as part of closure works.• Water management, surface water and groundwater modelling is progressively being revised for rehabilitation and post rehabilitation phases.
Coal Shaft Creek Reconstruction	<ul style="list-style-type: none">• Re-construction of the lower reaches of Coal Shaft Creek is required.• A conceptual Coal Shaft Creek Reconstruction Plan was prepared in 2012.• An updated draft design has been prepared. The design is being reviewed including the integration with the broader closure plan prior to finalisation, including options to revised the Main Water Dam capacity.• Coal Shaft Creek reconstruction and decommissioning of the dams requires further regulatory approvals. These approvals are expected to be finalised following the detailed Mine closure Plan.
Infrastructure	<ul style="list-style-type: none">• Staged decommissioning and demolition planning is in progress. Infrastructure will be progressively decommissioned where not required to support closure works.• Infrastructure to be retained will be subject to approval by the Resources Regulator



4. Community Complaints

- No complaints received by the Duralie Coal Mine in H1 2023.

6. Community Programs

Management Area	Project	Status
Support Programs	Stratford Coal Community Support Program (CSP)	<ul style="list-style-type: none"> • Applications for the 2025 Community Support Program will re-open on 19th August 2024. • The CCC, previous applicants and the wider community will be notified via Email, social media, newsletters and community notice boards. • The CSP guidelines have been updated to prioritise projects that support the community's socio-economic transition.
	Stratford Coal Education Support Fund	<ul style="list-style-type: none"> • The Stratford Coal Education Support Fund will be running again during 2024, applications are available from Gloucester High School or the MidCoast Council Gloucester office. • Applications will open in December 2024 and close on 31 January 2025.



NEED FUNDING TO HELP IMPROVE OUR LOCAL COMMUNITY?

Yancoal Community Support Program call for applications

Stratford Duralie Coal Mine is a proud and active member of the Local community. Yancoal's 2025 Community Support Program offers community groups the opportunity to apply for funding to support projects, events and initiatives that help make a genuine positive difference to Gloucester, Stroud and District.

If you have a project or idea with the potential to benefit others across the areas of health, community, environment, arts, culture, education or training, please visit: www.stratfordcoal.com.au or www.duraliecoal.com.au

Applications close
on 27th September 2024

