



# DURALIE COAL MINE Annual Rehabilitation Report and Forward Program

**JULY 2022**

### Rehabilitation Management Plan Summary Table

DURALIE COAL MINE REHABILITATION MANAGEMENT PLAN SUMMARY TABLE		
<b>Name of Mine:</b>	Duralie Coal Mine	
<b>Name of Lease Holder(s):</b>	CIM Duralie Pty Ltd / CIM Services Pty Ltd	
<b>Name of Mine Operator:</b>	Duralie Coal Pty Ltd	
<b>Annual Rehabilitation Report Commencement Date:</b>	N/A	
<b>Annual Rehabilitation Report Revision Dates and Version Numbers:</b>	N/A	
<b>Forward Program Commencement Date:</b>	1 July 2022	
<b>Forward Program Revision Dates and Version Numbers:</b>	Version 1 – Original 01144377	July 2022
<b>Mining Lease(s) / Lease Numbers / Expiry Dates:</b>	Mining Lease 1427	Expiry Date: 6 April 2019
	Mining Lease 1646	Expiry Date: 4 January 2032
<b>Date of Submission:</b>	30 June 2022	

## TABLE OF CONTENTS

<b>1</b>	<b>ANNUAL REHABILITATION REPORT .....</b>	<b>1</b>
1.1.	COMPLAINTS REGISTER .....	1
1.2.	CURRENT DEVELOPMENT CONSENTS, LEASES AND LICENCES .....	1
1.3.	LAND OWNERSHIP AND LAND USE .....	1
1.4.	STAKEHOLDER CONSULTATION.....	1
1.5.	SURFACE DISTURBANCE AND REHABILITATION ACTIVITIES DURING THE ANNUAL REPORTING PERIOD.....	1
1.6.	PLAN 1 – STATUS OF MINING AND REHABILITATION AT COMPLETION OF ANNUAL REPORTING PERIOD .....	1
1.6.1.	Submission of Plan 1 Spatial Data to Mine Rehabilitation Portal .....	1
1.6.2.	Submission of Plan 1 Electronic Copy .....	1
1.7.	DISTURBANCE AND REHABILITATION STATISTICS.....	1
1.7.1.	Current Disturbance and Rehabilitation Progression .....	1
1.7.2.	Rehabilitation Key Performance Indicators (KPIs).....	1
1.7.3.	Progressive Achievement of Established Rehabilitation.....	1
1.7.4.	Variation to the Rehabilitation Schedule .....	1
1.8.	REHABILITATION MONITORING AND RESEARCH FINDINGS .....	1
1.8.1.	Rehabilitation Monitoring.....	1
1.8.2.	Status of Performance against Rehabilitation Objectives and Rehabilitation Completion Criteria .....	2
1.8.3.	Outcomes of Rehabilitation Research and Trials.....	2
<b>2</b>	<b>FORWARD PROGRAM .....</b>	<b>3</b>
2.1.	THREE-YEAR FORECAST – SURFACE DISTURBANCE ACTIVITIES.....	3
2.1.1.	Project Description .....	3
2.1.2.	Description of Surface Disturbance Activities .....	3
2.2.	THREE-YEAR REHABILITATION FORECAST .....	7
2.2.1.	Rehabilitation Planning Schedule .....	7
2.2.2.	Rehabilitation Research and Trials .....	8
2.2.3.	Rehabilitation Maintenance and Corrective Actions .....	8
2.2.4.	Rehabilitation Schedule .....	9
2.2.5.	Subsidence Remediation for Underground Operations .....	10
2.3.	PLAN 2 – MINING AND REHABILITATION THREE-YEAR FORECAST.....	10
2.3.1.	Submission of Plan 2 Spatial Data to the Mine Rehabilitation Portal .....	10
2.3.2.	Submission of Plan 2 Electronic Copy .....	10
2.4.	PROGRESSIVE MINING AND REHABILITATION STATISTICS .....	14
2.4.1.	Three-yearly Forecast Cumulative Disturbance and Rehabilitation Progression .....	14
2.4.2.	Rehabilitation Key Performance Indicators (KPIs).....	14
2.5.	REHABILITATION COST ESTIMATE .....	15
<b>3</b>	<b>REFERENCES .....</b>	<b>16</b>

## **LIST OF FIGURES**

- Figure 1 Regional Location.  
Figure 2 DCM General Arrangement.

## **LIST OF PLANS**

- Plan 2A Mining and Rehabilitation – Year 1 (July 2023).  
Plan 2B Mining and Rehabilitation – Year 2 (July 2024).  
Plan 2C Mining and Rehabilitation – Year 3 (July 2025).

## **LIST OF TABLES**

- Table 1 Material production schedule during the next three years.  
Table 2 Predicted cumulative disturbance and rehabilitation progression during the next three-year term.  
Table 3 Progressive rehabilitation key performance indicators during the next three-year term.

## **LIST OF APPENDICES**

- Appendix 1 Regulatory Requirements for Annual Rehabilitation Report and Forward Program.

## **1 ANNUAL REHABILITATION REPORT**

In accordance with Part 1 of the New South Wales (NSW) Resources Regulator Form and Way – *Annual Rehabilitation Report and Forward Program for Large Mines (2021)*, and clauses 9 and 13 of Schedule 8A of the *Mining Regulation 2016*, the Annual Rehabilitation Report will be developed for Duralie Coal Mine (DCM). Relevant conditions are addressed in Appendix 1.

Requirements under the *Annual Rehabilitation Report and Forward Program for Large Mines (2021)* commenced in July 2021. Considering this is the first Annual Rehabilitation Report and Forward Program (ARRFP) prepared for the DCM under the new policy, no current applicable ‘reporting period’ exists. The first annual rehabilitation report will be prepared at the conclusion of the first (i.e. 2022) reporting period for the DCM:

Notwithstanding, section headings and subsections in accordance with the ARRFP requirements have been retained in Sections 1.1 to 1.8.3 for format consistency and will be populated at the conclusion of the first reporting period.

### **1.1. COMPLAINTS REGISTER**

### **1.2. CURRENT DEVELOPMENT CONSENTS, LEASES AND LICENCES**

### **1.3. LAND OWNERSHIP AND LAND USE**

### **1.4. STAKEHOLDER CONSULTATION**

### **1.5. SURFACE DISTURBANCE AND REHABILITATION ACTIVITIES DURING THE ANNUAL REPORTING PERIOD**

### **1.6. PLAN 1 – STATUS OF MINING AND REHABILITATION AT COMPLETION OF ANNUAL REPORTING PERIOD**

#### **1.6.1. Submission of Plan 1 Spatial Data to Mine Rehabilitation Portal**

#### **1.6.2. Submission of Plan 1 Electronic Copy**

### **1.7. DISTURBANCE AND REHABILITATION STATISTICS**

#### **1.7.1. Current Disturbance and Rehabilitation Progression**

#### **1.7.2. Rehabilitation Key Performance Indicators (KPIs)**

#### **1.7.3. Progressive Achievement of Established Rehabilitation**

#### **1.7.4. Variation to the Rehabilitation Schedule**

### **1.8. REHABILITATION MONITORING AND RESEARCH FINDINGS**

#### **1.8.1. Rehabilitation Monitoring**

**1.8.2. Status of Performance against Rehabilitation Objectives and Rehabilitation Completion Criteria**

**1.8.3. Outcomes of Rehabilitation Research and Trials**

## 2 FORWARD PROGRAM

In accordance with Part 2 of the NSW Resources Regulator Form and Way – *Annual Rehabilitation Report and Forward Program for Large Mines* (2021), and clauses 9 and 13 of Schedule 8A of the *Mining Regulation 2016*, the Forward Program component of the ARRF for the DCM has been prepared. Relevant conditions are addressed in Appendix 1.

The DCM ARRF provides details of the scheduled surface disturbance and rehabilitation activities at the DCM from 1 July 2022 to 30 June 2025.

### 2.1. THREE-YEAR FORECAST – SURFACE DISTURBANCE ACTIVITIES

#### 2.1.1. Project Description

Duralie Coal Pty Ltd (DCPL), a wholly owned subsidiary of Yancoal Australia Limited, owns and operates the DCM. The DCM is an existing mine situated approximately 35 kilometres (km) south of Gloucester in the Gloucester Valley, NSW (Figure 1). The DCM is situated adjacent to Mammy Johnsons River within the Karuah River Catchment, between the townships of Wards River and Stroud Road. The NSW Minister for Urban Affairs and Planning granted Development Consent for the DCM in August 1997 and coal production commenced in 2003.

Development of the DCM is approved under Mining Leases (MLs) 1427 and 1646 and NSW Project Approval (08\_0203). Other key approvals, licences and permits for the DCM are described in Section 1.2.

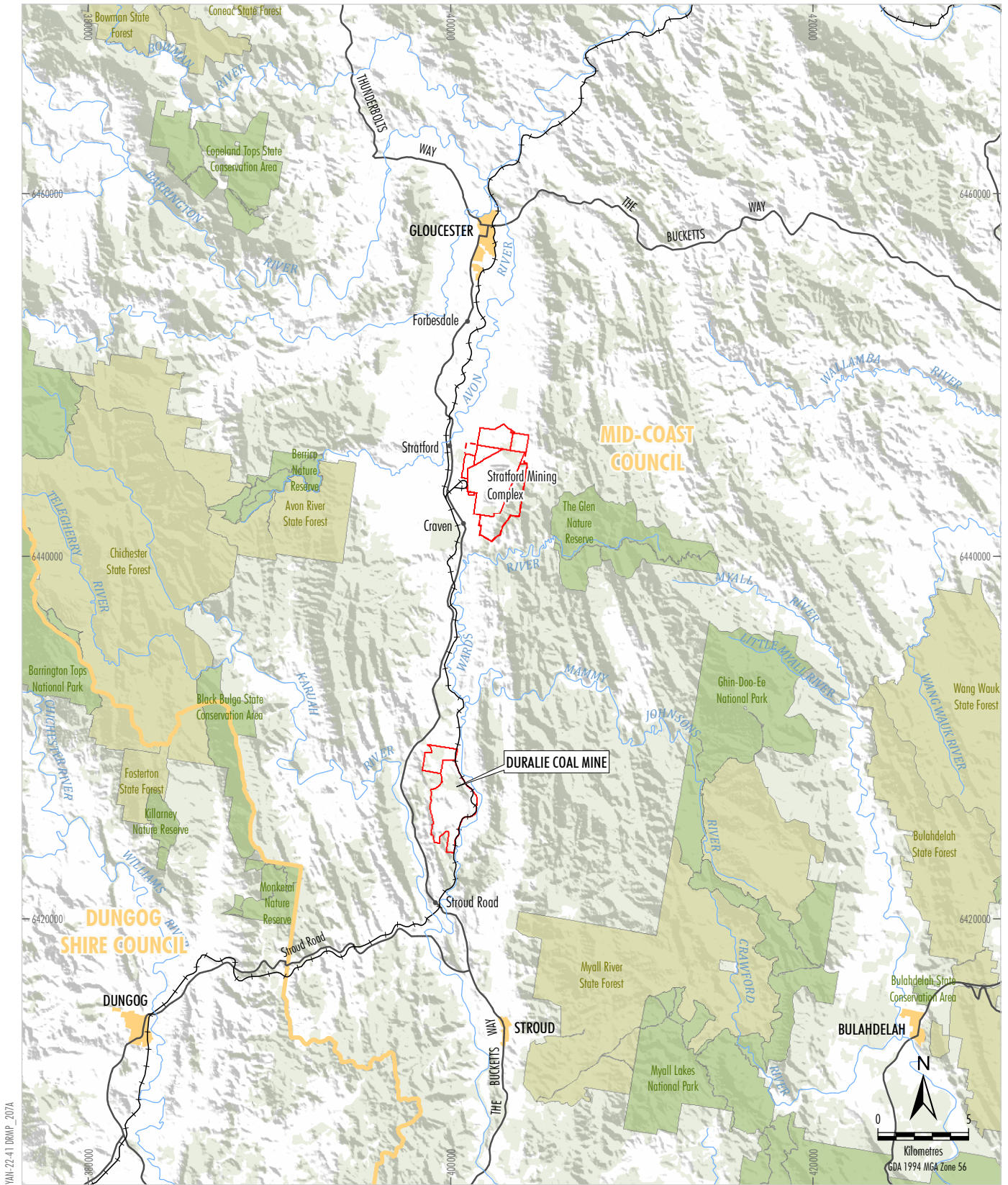
Condition 5, Schedule 2 of the Project Approval (PA 08\_0203) authorised mining operations to be carried at the DCM until 31 December 2021. Accordingly, coal mining at the DCM ceased in December 2021 and DCPL has commenced the mine closure phase.

#### 2.1.2. Description of Surface Disturbance Activities

As described in Section 2.1.1, mining operations at the DCM ceased on 31 December 2021 and the DCM has commenced the mine closure phase. This ARRF describes the proposed rehabilitation activities for the DCM consistent with DCM's Rehabilitation Management Plan (RMP) over the next three years.

Operations at the DCM now reflect the transition towards mine closure:

- **Vegetation Clearance and Surface Disturbance:** No new surface disturbance areas (within approved surface disturbance areas) are proposed.
- **Clareval Open Pit:** mining of the Clareval Open Pit is completed, and dewatering of the pit has ceased. Partial backfilling with waste rock mined from the Weismantel Open Pit has been completed, and shaping of the pit area to its final landform design has commenced. Mining of the Clareval Open Pit was finalised to a shallower depth than the maximum approved depth as modelled in 2014 DCM Open Pit Modification.
- **Weismantel Open Pit:** mining of the Weismantel Open Pit continued up to 31 December 2021, however, did not occur to the maximum approved depth as modelled in 2014 DCM Open Pit Modification. Progressive backfilling of completed areas of the Weismantel Open Pit has been undertaken and shaping of the pit and waste emplacement area to its final landform design has commenced.



IAN-22-41 DRMP\_207A



**LEGEND**

- Mining Lease Boundary
- NSW State Forest
- National Park, Nature Reserve or State Conservation Area
- Local Government Area Boundary

Source: Geoscience Australia (2006);  
NSW Department of Planning & Environment (2017)



**DURALIE COAL**  
Part of the Yancoal Australia Group

---

**DURALIE COAL MINE**  
Regional Location

Figure 1



- **DCM Water Management System Changes:**

- Following the cessation of mining of both the Clareval Open Pit and Weismantel Open Pit (now final voids), the voids are now available as water storage, and water is no longer transferred to the Main Water Dam. As a result, all irrigation activities for the purpose of reducing the total site water inventory at the DCM have ceased and the DCM's Irrigation Area irrigation system has been decommissioned and removed.
- Decommissioning of other redundant water management structures has also commenced. Consistent with the approved DCM final landform design, Auxiliary Dam No. 1 has been dewatered, decommissioned and rehabilitated.

Following the completion of mining operations (and the cessation of rail movements of run-of-mine coal) on 31 December 2021, key activities at the DCM include:

- infrastructure decommissioning and demolition;
- bulk rehandle, shaping and rehabilitation earthworks (which may include final blasting to achieve final landform design);
- growth medium establishment activities including topsoil spreading;
- revegetation of the final landform in accordance with the DCM RMP;
- removal of all mining fleet, major earthworks fleet and drilling fleet from the DCM;
- phase out of workforce (including transition of partial workforce to Stratford Mining Complex [SMC]); and
- refinement of monitoring programs and environmental management plans to reflect rehabilitated site.

**a. Exploration Activities**

As described in Section 2.1.1, mining operations at the DCM ceased on 31 December 2021 and the DCM has accordingly commenced the mine closure phase. Therefore, no further exploration activities are proposed at the DCM.

**b. Construction Activities**

As described in Section 2.1.1, mining operations at the DCM ceased on 31 December 2021 and the DCM has accordingly commenced the mine closure phase. Therefore, no construction activities are proposed at the DCM.

**c. Mining Schedule**





In accordance with Condition 5, Schedule 2 of the Project Approval (PA 08\_0203), mining activities at the DCM have ceased. Accordingly, no mining schedule is proposed at the DCM.

The general arrangement of the DCM is provided in Figure 2.

As the DCM is in closure and all works are occurring in areas disturbed during previous reporting periods, Table 1 is provided for completeness against the NSW Resources Regulator Form and Way – *Annual Rehabilitation Report and Forward Program for Large Mines (2021)* and the values presented in Table 1 are all zero.



YAN-22-41 DCMAP\_20BA

- LEGEND**
-  Mining Lease Boundary
  -  Approximate Extent of Existing/Approved Surface Development
  -  Existing/Approved First Flush Protocol Pump Back System
  -  Existing/Approved Up-catchment Diversion System

Source: © NSW Spatial Services (2019)  
 Orthophoto: Google Earth CENS/Airbus (2020)



**DURALIE COAL MINE**  
 DCM General Arrangement

Figure 2

**Table 1:  
Material production schedule during the next three years.**

Material	Unit	Year 1 (ending 1 July 2023)	Year 2 (ending 1 July 2024)	Year 3 (ending 1 July 2025)
Stripped topsoil	Cubic metres (m <sup>3</sup> )	0	0	0
Rock/overburden	m <sup>3</sup>	0	0	0
Ore	Mega tonne (Mt)	0	0	0
Reject material	Mt	0	0	0
Product	Mt	0	0	0

\* Mining operations at the DCM have ceased and no mining schedule is proposed.

## 2.2. THREE-YEAR REHABILITATION FORECAST

### 2.2.1. Rehabilitation Planning Schedule

DCPL has prepared a RMP which describes the rehabilitation activities for the DCM, and has been prepared in accordance with the new standard rehabilitation conditions on MLs imposed through an amendment to the Regulation under the *Mining Act 1992*. The RMP details rehabilitation activities and associated timeframes for completion, including key rehabilitation objectives, performance indicators and rehabilitation closure criteria in line with this ARRF.

The *Duralie Coal Mine: Closure & Rehabilitation Risk Assessment* (IEMA, 2021) was undertaken to review and update the DCM Environmental Risk Register for the mine closure and rehabilitation stage of operations and to provide guidance for the Mine Closure Plan and Schedule (Appendix 1 of the DCM RMP). For each of the key rehabilitation and mine closure risks identified, appropriate risk reduction strategies/actions were developed to adequately control the risk. Identified risks and control measures are detailed in the DCM RMP.

A Mine Closure Plan and Schedule was developed for the DCM and was included in previous versions of the Mining Operations Plan (MOP)/RMP. The purpose of this Mine Closure Plan and Schedule was to provide a strategy and a description of all the works required to develop the Mine Closure Plan. The technical assessments identified in the Mine Closure Plan and Schedule have been informed by the key risks and risk reduction strategies associated with rehabilitation and mine closure of the DCM, as identified in the rehabilitation and closure risk assessments.

The majority of the assessments/studies required by the Mine Closure Plan and Schedule have been completed progressively during the previous MOP/RMP term. The remaining components of the Program will continue to be developed. The outcomes of completed components of the Mine Closure Plan and Schedule have informed or been considered in the preparation of the RMP.

Key components of the Mine Closure Plan and Schedule include:

- Preparation of a detailed final landform design, including final void design.
- Review and update of the site groundwater model and site water balance (including final void water balance) based on the refined final landform design.
- Preparation of other key strategies and assessments (including a detailed Decommissioning Strategy for Mine Water Dams; and preparation of the final Coal Shaft Creek Reconstruction Plan).

- Undertaking Stakeholder Engagement to communicate the DCM’s mine closure process with relevant stakeholders.
- Review and update as required, existing environmental management plans for the rehabilitation and mine closure stage of operations.

DCPL has undertaken consultation with various stakeholders throughout the mine life and during mine closure. Ongoing consultation will continue regarding the mine closure process, objectives and concepts via direct engagements with regulators and other stakeholders, the Community Consultative Committee, DCM website and DCPL’s community information line.

The consultation undertaken during the preparation of all previous DCM MOP/RMPs, including the most recent MOP/RMP (1 January 2020 – 31 December 2021) was considered relevant to the preparation of the DCM RMP as the overarching final land use, rehabilitation procedures, monitoring and completion criteria were unchanged. A summary of consultation completed for rehabilitation and transition to mine closure at the DCM is provided in the DCM RMP.

### **2.2.2. Rehabilitation Research and Trials**

DCPL has extensive experience in both native ecosystem rehabilitation and agricultural (pasture) rehabilitation, with successful rehabilitation areas completed over the past 20 years at both the DCM and SMC. Learnings from the rehabilitation works undertaken onsite to date along with industry best practice guidelines are employed in the methodology for new rehabilitation areas.

#### ***Current Research and Trials***

No active rehabilitation research, modelling or trials are undertaken at the DCM. Learnings from rehabilitation works undertaken at both the DCM and SMC will continue to guide rehabilitation at the DCM for new rehabilitation areas.

#### ***Future Research and Trials***

Rehabilitation at the DCM has occurred progressively during the active mining phase and has continued throughout the post-mine closure phase, as shown in Plan 3A of the DCM RMP. These well-established rehabilitation methods have placed the DCM on a trajectory to achieve the rehabilitation outcomes. As such, there are no rehabilitation trials proposed at the DCM over the next three years.

### **2.2.3. Rehabilitation Maintenance and Corrective Actions**

Rehabilitation is monitored on a regular basis as described in the RMP Section 8, to ensure vegetation in the rehabilitation areas is establishing and to determine the need for any maintenance and/or contingency measures (e.g. supplementary plantings, weed or erosion control). The monitoring also aims to demonstrate the effectiveness of the rehabilitation techniques and track the progression towards achieving the rehabilitation performance and completion criteria, as per Section 4.1 of the DCM RMP.

A detailed monitoring report will continue to be prepared annually, including a summary of previous monitoring results, results of the current year’s monitoring and any planned remedial works, if required.

A Rehabilitation Trigger Action Response Plan has been developed in the RMP Section 10, based on identified threats to rehabilitation at the DCM. Any emerging threats to rehabilitation success will be identified through the ongoing monitoring programs described in RMP.

Results from the monitoring programs will be used to inform the ongoing rehabilitation maintenance requirements (e.g. the requirement for erosion control, supplementary rehabilitation plantings or offset area revegetation plantings, weed and pest control activities). It is expected that any maintenance requirements will be undertaken on a campaign / as required basis.

Post-closure maintenance activities will continue until the specific completion criteria has been met and confirmation has been received from the relevant authority.

Amendments to the monitoring programs during the post-closure phase, following identification of any rehabilitation performance issues or knowledge gaps in the Annual Rehabilitation Report, will be reflected in the relevant environmental management plan revisions as well as future iterations of the ARRF. It is expected that the residual monitoring programs will be undertaken for approximately ten years following mine closure.

#### **2.2.4. Rehabilitation Schedule**

Section 6.1 of the RMP and Plans 3A to 3D of the RMP outlines the proposed rehabilitation schedule over the life of the DCM, from the commencement of the RMP (i.e. 1 July 2022) until mine closure and the achievement of the completion criteria for each final land use domain

This ARRF provides further details of the scheduled rehabilitation activities at the DCM from 1 July 2022 to 30 June 2025.

Historically, areas disturbed by the DCM were progressively rehabilitated throughout mining activities. Rehabilitation at the DCM is undertaken progressively, behind the advancing open cut or once areas become available for rehabilitation and aims to create a structurally stable landform capable of sustaining the agreed post-mining land use(s).

Following the completion of mining operations on 31 December 2021, key activities at the DCM now include:

- infrastructure decommissioning and demolition;
- bulk rehandle, shaping and rehabilitation earthworks (which may include final blasting to achieve final landform design);
- growth medium establishment activities including topsoil spreading;
- revegetation of the final landform in accordance with the DCM RMP;
- removal of all mining fleet, major earthworks fleet and drilling fleet from the DCM;
- phase out of workforce (including transition of partial workforce to SMC); and
- refinement of monitoring programs and environmental management plans to reflect rehabilitated site.

Rehabilitation is implemented in accordance with the methodologies described in Section 6.2 of the RMP.

Decommissioning of infrastructure that is not required to support final rehabilitation activities and ongoing maintenance will be commenced before rehabilitation of relevant areas. Infrastructure anticipated to be removed from sites includes:

- fixed equipment and infrastructure (for re-use at another location [e.g. the SMC] or recycling); and
- non-salvageable/non-recyclable and non-contaminated infrastructure (for disposal at an off-site licensed facility or on-site subject to relevant approvals being obtained).

Rehabilitation continues to involve progressive bulk shaping, ground preparation techniques, , topsoil spreading and seeding/planting with native ecosystem or pasture species. Species to be planted in the rehabilitated landforms are described in the RMP.

In areas intended for native ecosystem as the proposed final land use, ongoing activities will include habitat enhancement, controlling weeds and fauna pests as required. The requirement of these activities will be based on the Rehabilitation Monitoring Program (Section 8 of the DCM RMP), opportunistic inspections and as required by the DCM Biodiversity Management Plan.

In developing the rehabilitation schedule, several assumptions were made to ensure that rehabilitation is undertaken progressively and as soon as reasonably practicable, including:

- There are no extreme weather events that would prohibit landform establishment or rehabilitation progression (e.g. severe and prolonged dry or wet periods).
- Availability of suitable seed and tubestock.
- Workforce constraints (e.g. COVID-19 or another pandemic).

#### **2.2.5. Subsidence Remediation for Underground Operations**

The DCM is an open cut mining operation and therefore has no areas affected by underground mining subsidence.

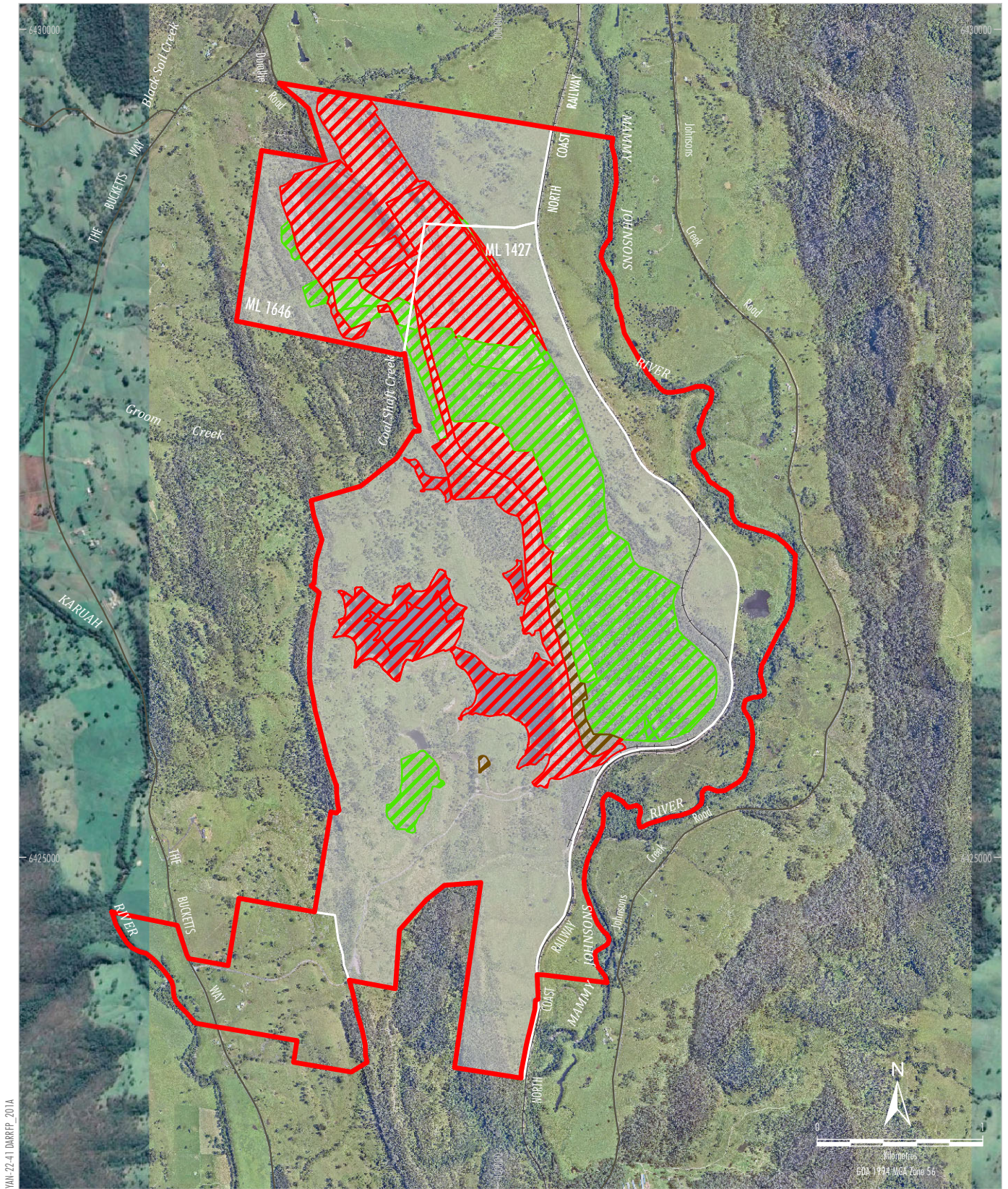
### **2.3. PLAN 2 – MINING AND REHABILITATION THREE-YEAR FORECAST**

#### **2.3.1. Submission of Plan 2 Spatial Data to the Mine Rehabilitation Portal**

In accordance with the NSW Resources Regulator Form and Way – *Annual Rehabilitation Report and Forward Program for Large Mines* (2021), DCPL has prepared and submitted spatial theme data to the NSW Resources Regulator through the mine rehabilitation portal. Plan 2 is provided in Section 2.3.2.






#### **2.3.2. Submission of Plan 2 Electronic Copy**

In line with the spatial data submitted to the NSW Resources Regulator through the mine rehabilitation portal, Plan 2 is provided in a series of subplans (i.e. Plans 2A, 2B and 2C). These Plans represent the proposed DCM rehabilitation schedule for Years 1, 2 and 3 of the DCM ARFP, respectively.



YAN-22-41 DARFP\_201A

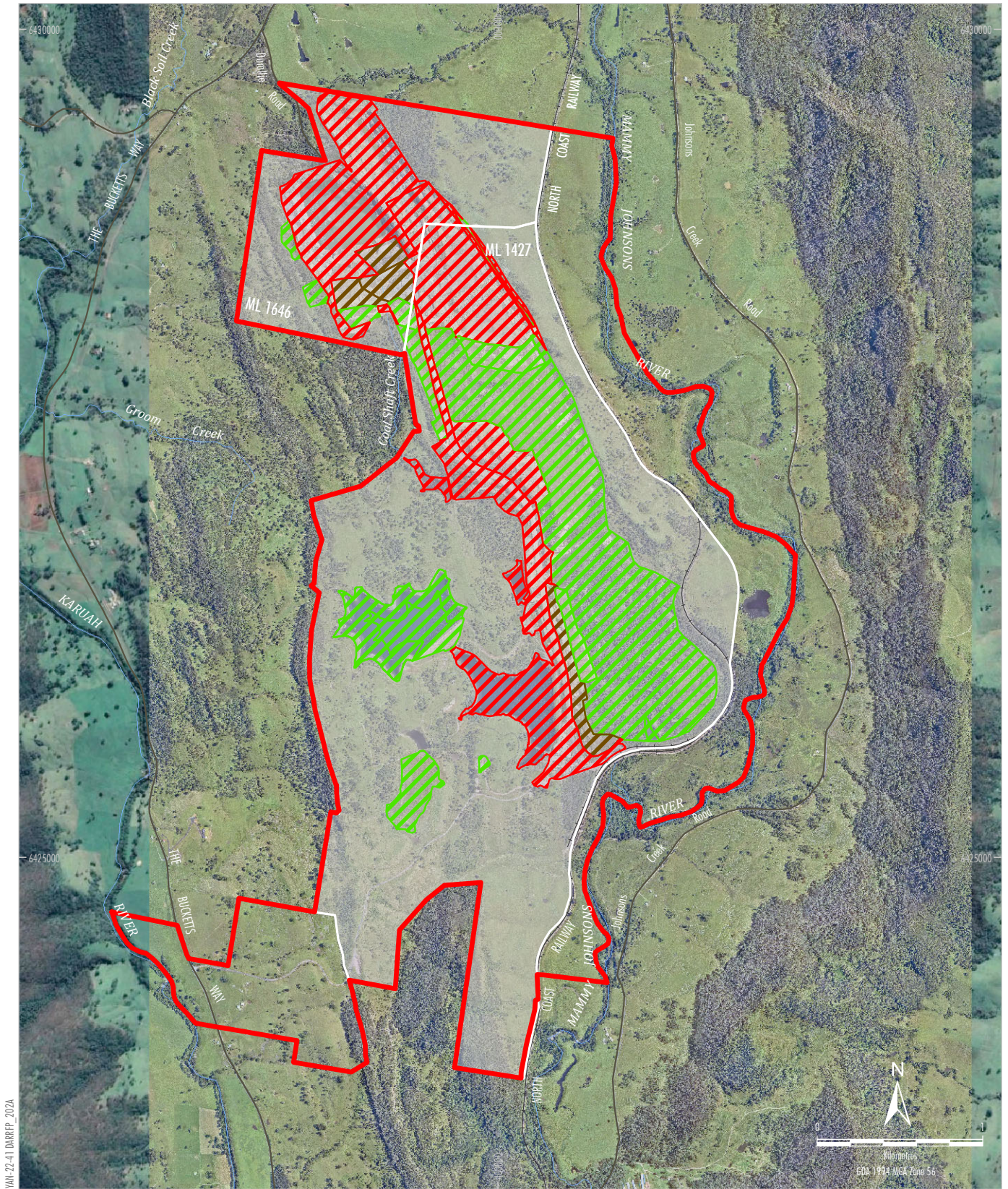
Source: © NSW Spatial Services (2019)  
 Orthophoto: Google Earth CENS/Airbus (2020)

- LEGEND**
-  Project Approval Boundary\*
  -  Coal - Current Title
  -  Forecast Area
  -  Forecast Land Prepared for Rehabilitation
  -  Forecast Disturbance

\* Note: Appendix 1 Schedule of Land in Project Approval (08\_0203) includes some part lots. For simplicity, whole lots are included in the graphical representation shown on this figure.



**DURALIE COAL MINE**  
 Mining and Rehabilitation – Year 1  
 (July 2023)



YAN-22-41 DARFP\_2024

- LEGEND**
- Project Approval Boundary\*
  - Coal - Current Title
  - Forecast Area
  - Forecast Land Prepared for Rehabilitation
  - Ecosystem and Land Use Establishment
  - Forecast Disturbance

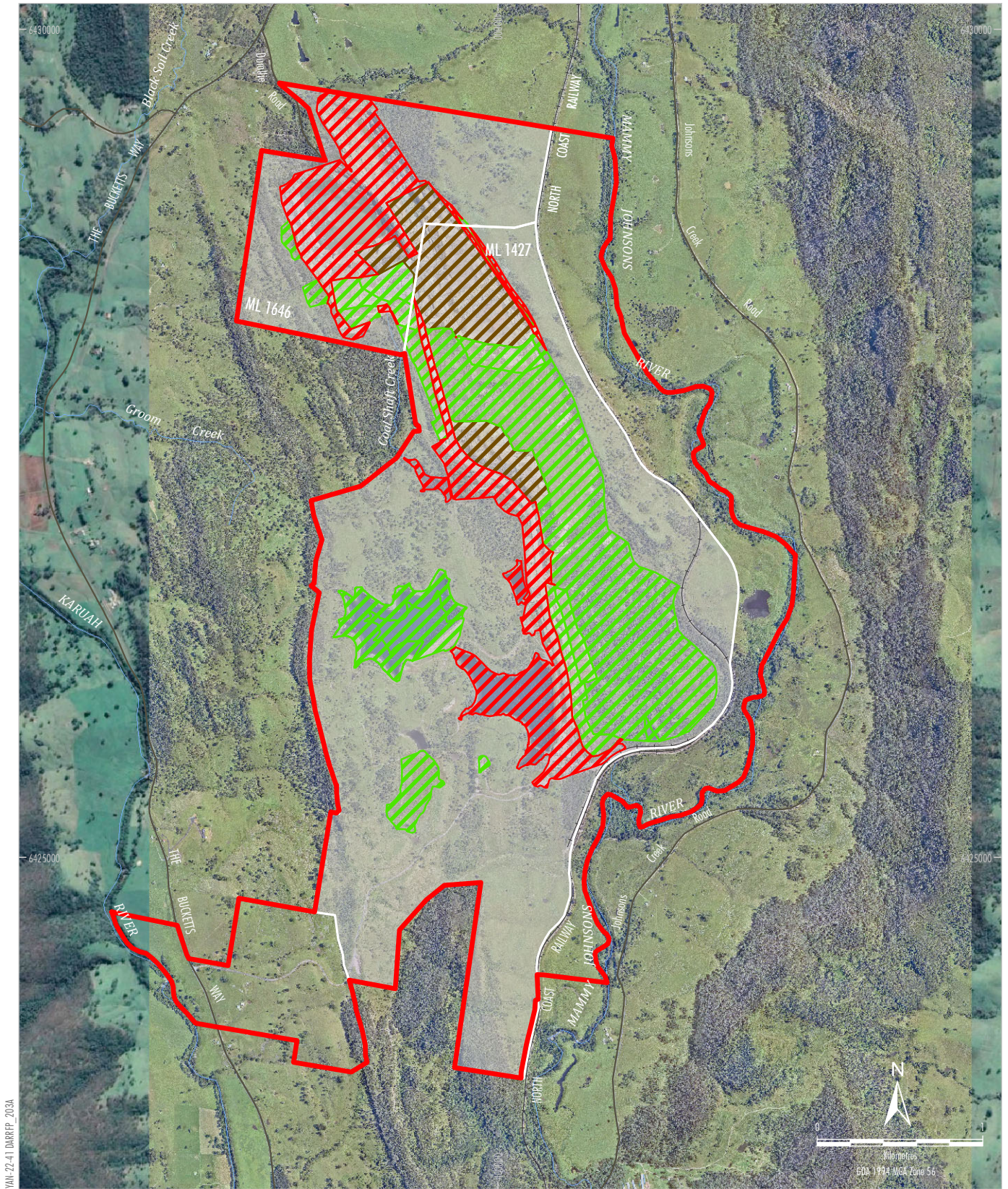
\* Note: Appendix 1 Schedule of Land in Project Approval (08\_0203) includes some part lots. For simplicity, whole lots are included in the graphical representation shown on this figure.

Source: © NSW Spatial Services (2019)  
 Orthophoto: Google Earth CENS/Airbus (2020)



**DURALIE COAL MINE**  
 Mining and Rehabilitation – Year 2  
 (July 2024)





YAN-22-41 DARFP\_203A

Source: © NSW Spatial Services (2019)  
 Orthophoto: Google Earth CENS/Airbus (2020)

- LEGEND**
- Project Approval Boundary\*
  - Coal - Current Title
  - Forecast Area
  - Forecast Land Prepared for Rehabilitation
  - Ecosystem and Land Use Establishment
  - Forecast Disturbance

\* Note: Appendix 1 Schedule of Land in Project Approval (08\_0203) includes some part lots. For simplicity, whole lots are included in the graphical representation shown on this figure.



**DURALIE COAL MINE**  
 Mining and Rehabilitation – Year 3  
 (July 2025)

## 2.4. PROGRESSIVE MINING AND REHABILITATION STATISTICS

### 2.4.1. Three-yearly Forecast Cumulative Disturbance and Rehabilitation Progression

As part of preparing the DCM ARRF, the rehabilitation schedule spatial data presented in Section 2.3 was submitted to NSW Resources Regulator through the NSW Resources Regulator's Mine Rehabilitation Portal. The Mine Rehabilitation Portal has subsequently generated the predicted cumulative disturbance and rehabilitation progression to be undertaken over the next three years at the DCM (Table 2).

**Table 2:**  
**Predicted cumulative disturbance and rehabilitation progression during the next three-year term.**

YEAR	1 (ending 1 July 2023)	2 (ending 1 July 2024)	3 (ending 1 July 2025)
Total disturbance footprint – surface disturbance (ha)	397.5	397.5	397.5
Underground mining area (ha)	0	0	0
Total active disturbance (ha)	214.3	176.1	120.1
Rehabilitation – land preparation (ha)	9.4	22.3	59.9
Ecosystem and land use establishment (ha)	173.8	199.1	217.6

### 2.4.2. Rehabilitation Key Performance Indicators (KPIs)

In addition to the data generated as part of Section 2.4.1, the NSW Resource Regulator's Mine Rehabilitation Portal has generated the progressive rehabilitation key performance indicators for the next three years of activity at the DCM (Table 3).

**Table 3:**  
**Progressive rehabilitation key performance indicators during the next three-year term.**

YEAR	1 (ending 1 July 2023)	2 (ending 1 July 2024)	3 (ending 1 July 2025)
Total new active disturbance area during reporting period (ha)	0	0	0
Area of land proposed for active rehabilitation during reporting period (ha)	3.1	38.2	56.1
Annual rehabilitation to disturbance ratio	1 : 0	1 : 0	1 : 0

## **2.5. REHABILITATION COST ESTIMATE**

A Rehabilitation Cost Estimate (RCE), as defined in the *Mining Regulation 2016*, has been developed for the DCM in accordance with the NSW Resources Regulator's Rehabilitation Cost Estimate Tool.

The current Assessed Security Deposit for the DCM dated 11 December 2017, is determined to be \$12,220,000.

The revised RCE (June 2022) prepared for the DCM utilising the NSW Resources Regulator's Rehabilitation Cost Estimate Tool is \$12,610,230.

### **3 REFERENCES**

IEMA (2021). *Duralie Coal Mine: Closure & Rehabilitation Risk Assessment*.

NSW Resources Regulator (2021). *Form and Way – Annual Rehabilitation Report and Forward Program for Large Mines*.

APPENDIX 1

REGULATORY REQUIREMENTS FOR FORWARD PROGRAM  
AND ANNUAL REHABILITATION REPORT

**Table A-1:  
Regulatory Requirements for Annual Rehabilitation Report and Forward Program**

Condition	Requirement	Relevant Section
<b>ML 1427 and 1646</b>		
Condition 13, Schedule 8A	<p><b><i>Forward program and annual rehabilitation report</i></b></p> <p>(1) <i>The holder of a mining lease must prepare a program (a forward program) for the mining lease that includes the following:</i></p> <p>(a) <i>schedule of mining activities for the mining area for the next 3 years,</i></p> <p>(b) <i>a summary of the spatial progression of rehabilitation through its various phases for the next 3 years,</i></p> <p>(c) <i>a requirement that the rehabilitation of land and water disturbed by mining activities under the mining lease must occur as soon as reasonably practicable after the disturbance occurs.</i></p>	<p>Section 2</p> <p>Section 2.3</p> <p>Section 2.4</p>
	<p>(2) <i>The holder of a mining lease must prepare a report (an annual rehabilitation report) for the mining lease that includes:</i></p> <p>(a) <i>a description of the rehabilitation undertaken over the annual reporting period,</i></p> <p>(b) <i>a report demonstrating the progress made through the phases of rehabilitation provided for in the forward program applying to the reporting period,</i></p> <p>(c) <i>a report demonstrating progress made towards the achievement of the following—</i></p> <p>(i) <i>the objectives set out in the rehabilitation objectives statement,</i></p> <p>(ii) <i>the criteria set out in the rehabilitation completion criteria statement,</i></p> <p>(iii) <i>for large mines—the final land use as spatially depicted in the final landform and rehabilitation plan.</i></p>	Section 1
	<p>(3) <i>If a rehabilitation outcome document has not been approved by the Secretary, the holder of the mining lease must rely on a proposed version of the document.</i></p>	To date, Rehabilitation Outcome Documents are yet to be approved by the Secretary. Following approval, proposed Rehabilitation Outcome Documents will be amended to reflect approval.
	<p>(4) <i>The holder of the mining lease must give the forward program and annual rehabilitation report to the Secretary</i></p>	Refer to the Summary Table for date of submission.
	<p>(5) <i>In this clause— annual reporting period means each period of 12 months commencing on:</i></p> <p>(a) <i>the date on which the mining lease is granted, or</i></p> <p>(b) <i>if the Secretary approves</i></p>	Section 1