

Stratford Extension Project Environmental Impact Statement

ATTACHMENT 4

COMMUNITY INFORMATION



Part of Gloucester Coal

ABOUT GLOUCESTER COAL

Gloucester Coal owns the Stratford Coal Mine and Bowens Road North Open Cut located approximately 10 km south of Gloucester (known collectively as the Stratford Mining Complex).

Gloucester Coal has more than a 15 year operational history in the Gloucester Basin with a strong environmental management record. The Stratford Mining Complex has directly created more than 125 local jobs and indirectly supported hundreds of additional jobs through the use of local contractors and service providers. The company's Gloucester Basin operations (Stratford Mining Complex and Duralie Coal Mine) provide significant economic

stimulus to Gloucester through direct and indirect means.

Gloucester Coal is committed to continued, responsible environmental management and productive co-existence with agricultural and tourism enterprises in the region. Gloucester Coal's development focus is on the existing Stratford Mining Complex and this is reflected in our exploration programme which is conducted significantly south of Gloucester.

As a major employer in the Gloucester Basin, the company continues to support local events and recently established a Community Support Program to benefit a wider range of community needs.

STRATFORD EXTENSION PROJECT

The Stratford Extension Project (the Project) is a proposed extension of open cut mining operations in areas immediately adjacent to the current operations of the Stratford Mining Complex.

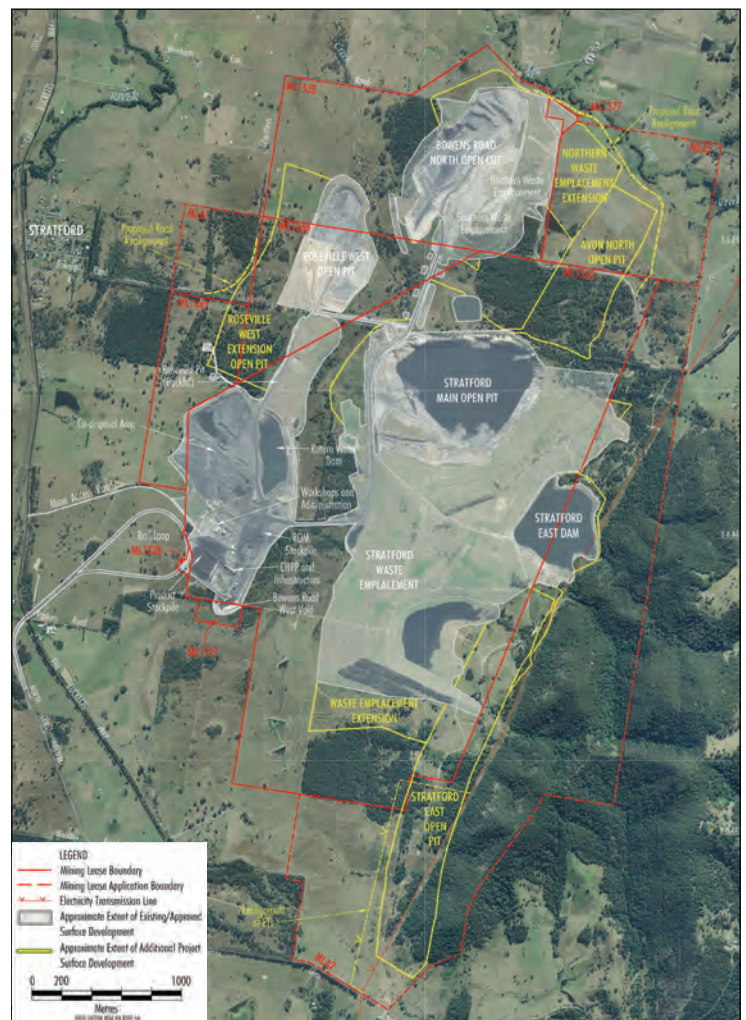
The Project will secure the future of the mine well into the next decade, providing job security for local mine employees and contractors. It will also continue our contribution to the regional economy and local community.

The Project would provide approximately 250 direct jobs in the local area.

OVERVIEW OF THE PROPOSED STRATFORD EXTENSION PROJECT

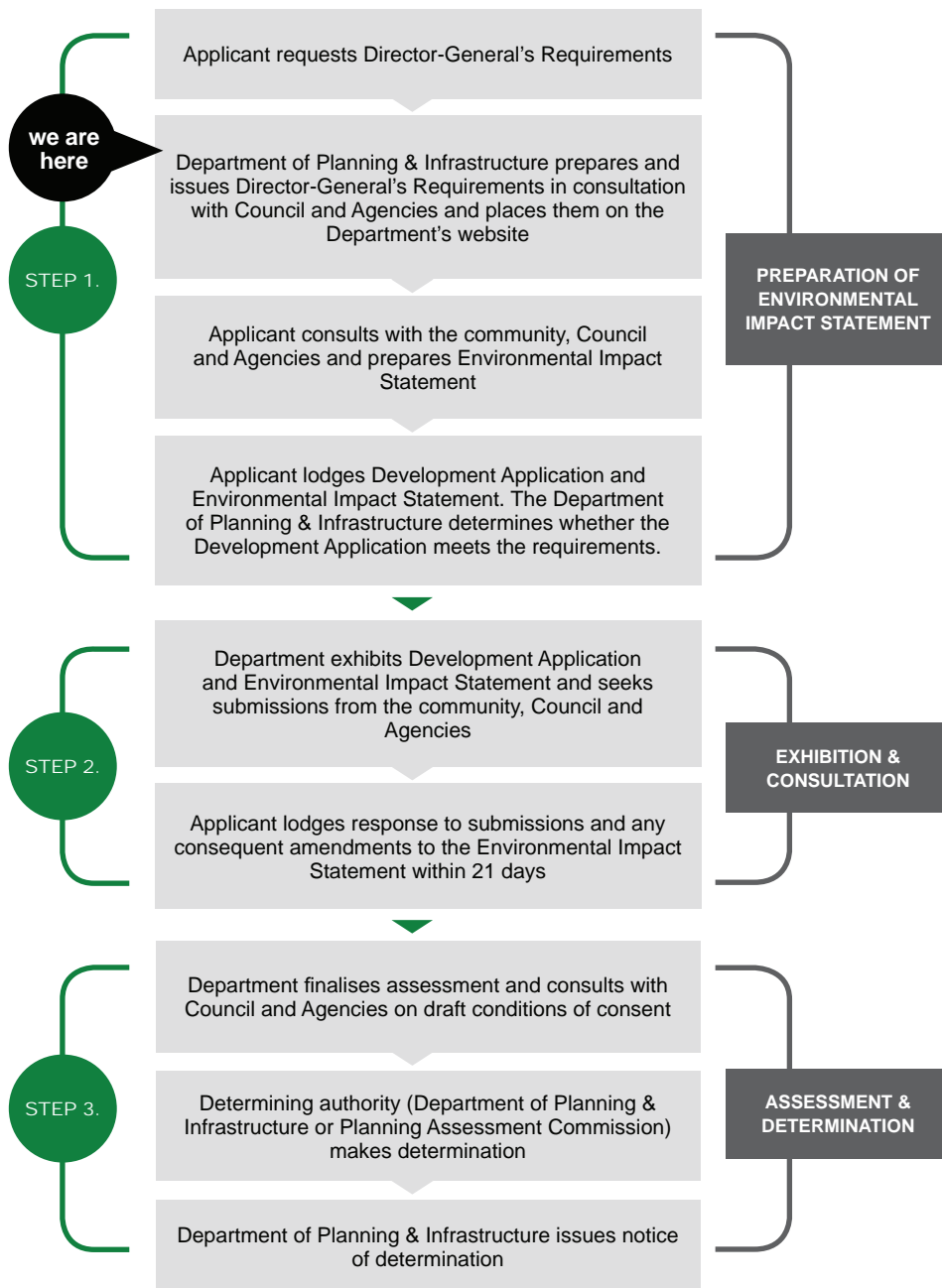
The main components of the proposed Project include:

- Raw coal production up to 2.6 million tonnes per annum.
- An extension of open cut mining operations for an additional 11 years (approx.)
- Extension of the existing Roseville West open pit.
- Construction of two new open pits - Avon North and Stratford East.
- Extension of existing mine waste rock emplacements.
- Ongoing coal processing at the existing Coal Handling and Preparation Plant.
- Realignment of a 132kV power line.
- Realignment of Wenham Cox Road and Bowens Road/Wheatley's Lane to the north and north-west of the project.
- Construction of new dams, channels and other control measures to manage groundwater and surface water.
- Increasing the capacity of the Stratford East Dam to enable containment and management of mine water within the boundaries of the site (zero discharge).
- Ongoing rail transport of coal to Newcastle, using existing rail loading/unloading infrastructure.



State Significant Development Assessment Typical Steps

Under Division 4.1 of Part 4 of the *Environmental Planning and Assessment Act, 1979*



COMMUNITY CONSULTATION

Ongoing community consultation will include sessions for landholders, individual consultation, open and regular Project updates through leaflets and Gloucester Coal's website.

The Stratford Coal Mine Community Consultative Committee (CCC) will be kept informed through allocated meetings and specific Project updates.

THE APPROVAL PROCESS

Approval for the Project will be sought under Division 4.1 of Part 4 of the *Environmental Planning and Assessment Act 1979*.

Gloucester Coal has submitted a Development Application and supporting Project Description and Preliminary Environmental Assessment (PEA) to the Department of Planning and Infrastructure (DP&I). The PEA can be viewed on the DP&I website: majorprojects.planning.nsw.gov.au

An Environmental Impact Statement (EIS) is being prepared by recognised experts to determine the environmental, social and economic effects of the Project. The EIS will be prepared in accordance with the Director-General's Requirements to be issued by the Director-General of the DP&I.

Gloucester Coal expects to complete the EIS in early 2012. It will be lodged with the DP&I for assessment. After the EIS has been accepted by the DP&I, it will be placed on exhibition for public review and submissions. The EIS will be on public exhibition for a minimum of 30 days and this is anticipated to occur in mid 2012.

STRATFORD MINING COMPLEX ENVIRONMENTAL AND COMMUNITY ENQUIRIES

Rachael Windrum (nee Urselmann)
Manager - Community Liaison
Phone: (02) 6538 4201
Rachael.Windrum@stratfordcoal.com.au

For more information on Gloucester Coal, please visit:
www.gloucestercoal.com.au



Part of Gloucester Coal

ABOUT GLOUCESTER COAL

Gloucester Coal owns the Stratford Coal Mine and Bowens Road North Open Cut located approximately 10 km south of Gloucester (known collectively as the Stratford Mining Complex).

Gloucester Coal has more than an 18 year operational history in the Gloucester Basin with a strong environmental management record. Gloucester Coal is committed to continued, responsible environmental management and continued productive co-existence with agricultural and tourism enterprises in the region.

The company's Gloucester Basin operations (Stratford Mining Complex and Duralie Coal Mine) provide significant economic stimulus to Gloucester through direct and indirect means. The Stratford Mining Complex has directly created more than 125 local jobs and indirectly supports hundreds of additional jobs through the use of local contractors and service providers.

As a major employer in the Gloucester Basin, the company continues to support local events and recently established a Community Support Program to benefit a wider range of community needs.

OVERVIEW OF THE PROPOSED STRATFORD EXTENSION PROJECT

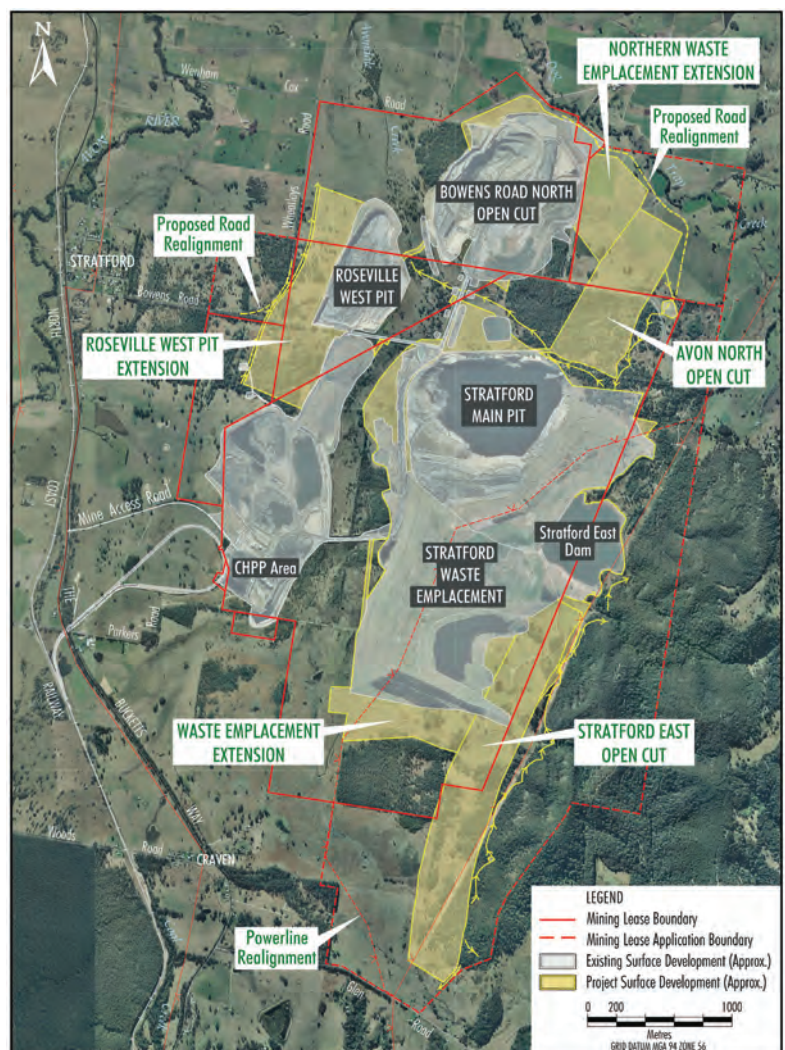
The main components of the proposed Project include:

- Maximum raw coal production of 2.6 million tonnes per annum.
- An extension of open cut mining operations for an additional 11 years (approximately).
- Extension of the existing Roseville West open pit.
- Construction of two new open pits - Avon North and Stratford East.
- Extension of existing mine waste rock emplacements.
- Ongoing coal processing at the existing Coal Handling and Preparation Plant (CHPP).
- Realignment of a 132kV power line.
- Realignments of Wheatleys Lane, Bowens Road, and Wenham Cox/Bowens Road.
- Construction of new dams, channels and other control measures to manage groundwater and surface water.
- Preservation of containment and management strategy to contain mine water within the boundaries of the site (zero discharge).
- Ongoing rail transport of coal to Newcastle, using existing rail loading/unloading infrastructure.

STRATFORD EXTENSION PROJECT

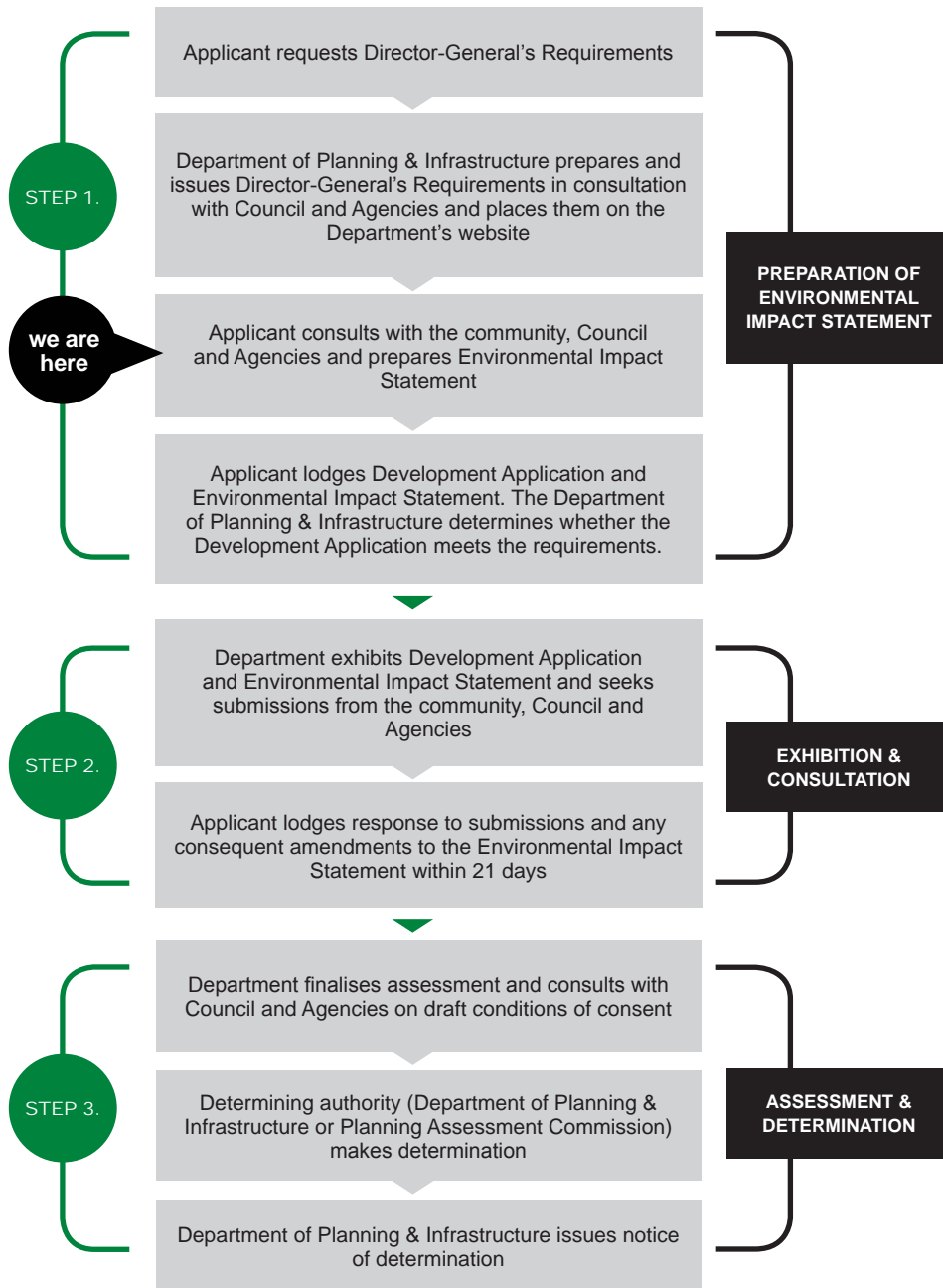
As described in the November 2011 Community Leaflet, the Stratford Extension Project (the Project) is a proposed extension of open cut mining operations in areas immediately adjacent to the current operations of the Stratford Mining Complex.

The Project will secure the immediate future of the mine, providing job security for local mine employees and contractors. It will also continue our contribution to the regional economy and local community.



State Significant Development Assessment Typical Steps

Under Division 4.1 of Part 4 of the *Environmental Planning and Assessment Act, 1979*



COMMUNITY INFORMATION SESSIONS

As part of Gloucester Coal's ongoing commitment to community consultation, Community Information Sessions will be open to the public on March 7 and 8 at Stratford Hall. Members of the local community are invited to attend anytime between 4:00pm and 8:00pm and will be given the opportunity to raise questions and receive Project information directly from Gloucester Coal representatives and its consultants.

KEY INFORMATION / DATES:

Location: Stratford Hall, Anne St Stratford

When: Wednesday 7 March 2012
4:00 pm - 8:00 pm

Thursday 8 March 2012
4:00 pm - 8:00 pm

For more information, please contact Rachael Windrum (see contact details bottom of page).

THE APPROVAL PROCESS

Director-General's Requirements (DGRs) were issued by the Department of Planning and Infrastructure (DP&I) on 14 December 2011. The Project DGRs are available from the DP&I's website:

<http://majorprojects.planning.nsw.gov.au/>

An Environmental Impact Statement (EIS) is being prepared by recognised experts to determine the environmental, social and economic effects of the Project and will include, but not be limited to, the following key studies:

- Groundwater Assessment
- Surface Water Assessment
- Noise and Blasting Assessment
- Air Quality and Greenhouse Gas Assessment
- Flora and Fauna Assessment
- Socio-Economic Assessment

Once complete, the EIS will be lodged with the DP&I for assessment. After the EIS has been accepted by the DP&I, it will be placed on exhibition for public review and submissions. The EIS will be on public exhibition for a minimum of 30 days and this is anticipated to occur in mid 2012.

STRATFORD MINING COMPLEX ENVIRONMENTAL AND COMMUNITY ENQUIRIES

Rachael Windrum

Manager - Community Liaison

Phone: (02) 6538 4201

Rachael.Windrum@stratfordcoal.com.au

For more information on Gloucester Coal, please visit: www.gloucestercoal.com.au



Part of Gloucester Coal

ABOUT GLOUCESTER COAL

Gloucester Coal owns the Stratford Coal Mine and Bowens Road North Open Cut located approximately 10 km south of Gloucester (known collectively as the Stratford Mining Complex).

Gloucester Coal has more than an 18 year operational history in the Gloucester Basin with a strong environmental management record. Gloucester Coal is committed to continued, responsible environmental management and continued productive co-existence with agricultural and tourism enterprises in the region.

The company's Gloucester Basin operations (Stratford Mining Complex and Duralie Coal Mine) provide significant economic stimulus to Gloucester through direct and indirect means. The Stratford Mining Complex has directly created more than 125 local jobs and indirectly supports hundreds of additional jobs through the use of local contractors and service providers.

As a major employer in the Gloucester Basin, the company continues to support local events and recently established a Community Support Program to benefit a wider range of community needs.

STRATFORD EXTENSION PROJECT

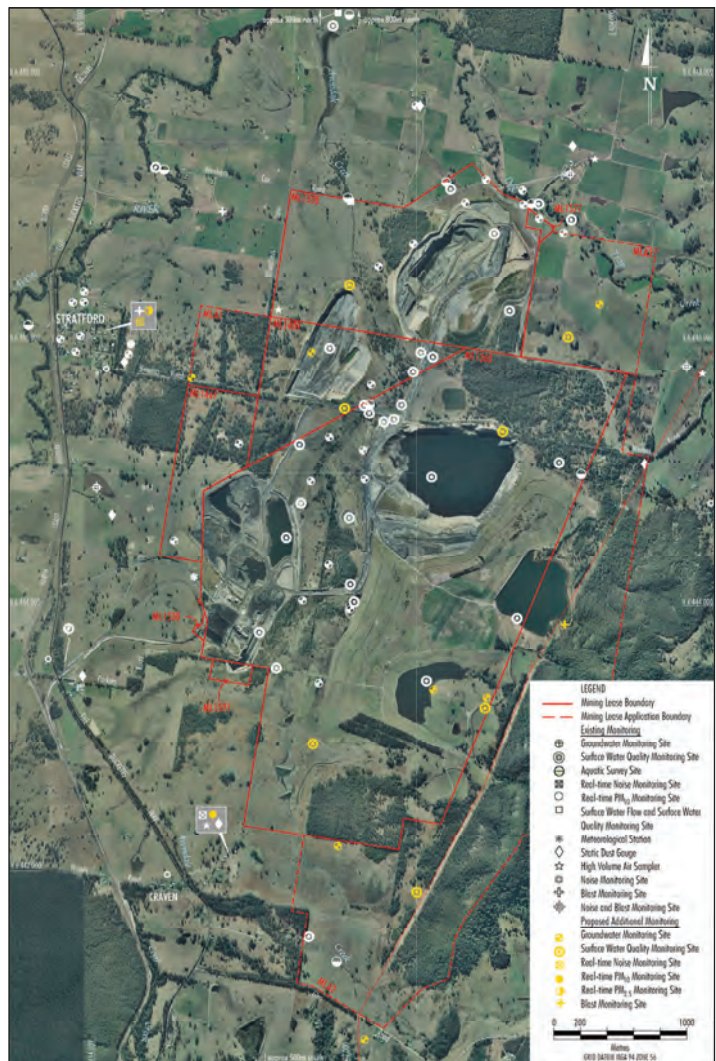
As described in the November 2011 and February 2012 Community Leaflets, the Stratford Extension Project (the Project) is a proposed extension of open cut mining operations in areas immediately adjacent to the current operations of the Stratford Mining Complex.

The Project will secure the immediate future of the mine, providing job security for local mine employees and contractors. It will also continue our contribution to the regional economy and local community

OVERVIEW OF THE PROPOSED STRATFORD EXTENSION PROJECT

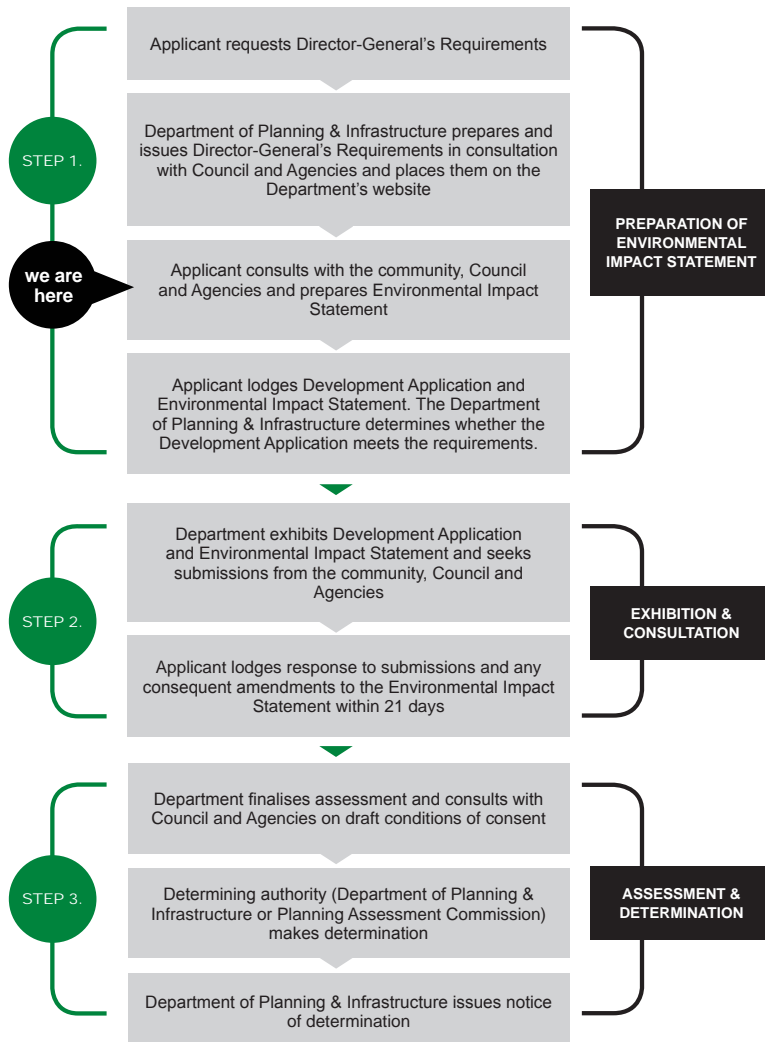
The main components of the proposed Project include:

- Maximum raw coal production of 2.6 million tonnes per annum.
- An extension of open cut mining operations for an additional 11 years (approximately).
- Extension of the existing Roseville West open pit.
- Construction of two new open pits - Avon North and Stratford East.
- Extension of existing mine waste rock emplacements.
- Ongoing coal processing at the existing Coal Handling and Preparation Plant.
- Realignment of a 132kV power line.
- Realignments of Wheatleys Lane, Bowens Road, and Wenham Cox/Bowens Road.
- Construction of new dams, channels and other control measures to manage groundwater and surface water.
- Preservation of containment and management strategies to contain mine water within the boundaries of the site (zero discharge).
- Ongoing rail transport of coal to Newcastle, using existing rail loading/unloading infrastructure.



State Significant Development Assessment Typical Steps

Under Division 4.1 of Part 4 of the *Environmental Planning and Assessment Act, 1979*



Environmental Impact Statement and Community Consultation

An Environmental Impact Statement (EIS) is being prepared by recognised experts to determine the environmental, social and economic effects of the Project. Once complete, the EIS will be lodged with the Department of Planning and Infrastructure (DP&I) for assessment. After the EIS has been accepted by the DP&I, it will be placed on exhibition for public review and submissions. The EIS will be on public exhibition for a minimum of 30 days and this is anticipated to occur in mid 2012.

Environmental Management and Monitoring

Environmental performance is critical to the success of Gloucester Coal and the company conducts its operations to the highest environmental standards across all sites. Gloucester Coal's environmental management plans are focussed on minimising the impacts of mining and set high standards for noise, air quality, water management and land rehabilitation.

Quarterly environmental monitoring reports are presented to Community Consultative Committees and Government agencies, plus comprehensive Annual Environmental Management Reports (AEMR) are also compiled and submitted. The AEMRs are available from the Gloucester Coal website (www.gloucestercoal.com.au).

The Stratford Mining Complex was one of nine New South Wales (NSW) mines selected to work with the NSW Office of Environment and Heritage to improve air quality through a number of dust mitigation measures such as minimising wind erosion from exposed areas, improved dust suppression on haul roads and strict monitoring around blasting. These mitigation measures are reported in the Pollution Reduction Program which is a requirement of the Stratford Coal Mine Environmental Protection Licenses and is also available on the Gloucester Coal website. These mitigation measures will be implemented and will continue in force for the duration of the Project.

The Project will expand the existing monitoring network as shown on the Monitoring Network Figure. Monitoring of relevant parameters for the assessment of performance of the following environmental management aspects would be undertaken:

- Noise
- Blasting (vibration and overpressure)
- Air quality
- Surface water quality and flows
- Groundwater quality and levels
- Land rehabilitation
- Flora, fauna and aquatic ecology; and
- Aboriginal Heritage.

The Project will establish a 24/7 noise monitoring system and real-time PM₁₀ and PM_{2.5} dust monitoring system. These systems will be integrated with environmental models and weather data to help manage and minimise noise and dust across all operations.

STRATFORD MINING COMPLEX ENVIRONMENTAL AND COMMUNITY ENQUIRIES

Rachael Windrum

Manager - Community Liaison

Phone: (02) 6538 4201

Rachael.Windrum@gcl.com.au

For more information on Gloucester Coal, please visit: www.gloucestercoal.com.au





Part of Gloucester Coal

Stratford Extension Project Environmental Impact Statement

COMMUNITY INFORMATION SESSIONS

7-8 March 2012

4.00 - 8.00 pm

