

ASHTON COAL PROJECT  
FORWARD PROGRAM  
31 December 2023– 30 DECEMBER 2026



APRIL 2024

## SUMMARY TABLE

ASHTON COAL OPERATIONS PTY LIMITED		
FORWARD PROGRAM SUMMARY TABLE		
<b>Name of Operation:</b>	Ashton Coal Project	
<b>Name of Lease Holder(s):</b>	White Mining (NSW) Pty Limited	
<b>Name of Operator:</b>	Ashton Coal Operations Pty Limited	
<b>Forward Program Period:</b>	31 December 2023– 30 December 2026	
<b>Forward Program Revision Dates and Version Numbers:</b>	Version 1	March 2024
<b>Mining Lease(s) / Lease Numbers / Expiry Dates:</b>	ML 1533	Expiry: 26/02/2024
	ML 1529	Expiry: 11/11/2030
	ML 1623	Expiry: 30/10/2029
	ML 1834	Expiry: 03/06/2033
	ML 1835	Expiry: 31/12/2023
	ML 1836	Expiry: 31/12/2023
	ML 1837	Expiry: 01/10/2043
	ML 1861	Expiry: 14/09/2044
<b>Date of Submission:</b>	12 April 2024	

**APPROVED DOCUMENT IS UNCONTROLLED WHEN PRINTED**

Title: Ashton Coal Forward Program		
Owner: Phil Brown		
Last Review: 12/04/2024	Next Review: 01/01/2025	Revision Number: 1

## TABLE OF CONTENTS

<b>1</b>	<b>APPLICANT DETAILS .....</b>	<b>1</b>
1.1	Applicant.....	1
<b>2</b>	<b>SURFACE DISTURBANCE ACTIVITIES .....</b>	<b>2</b>
2.1	Project Description .....	2
2.2	Exploration Activities.....	2
2.3	Construction Activities.....	2
2.4	Mining Schedule .....	3
2.5	Key Production Milestones.....	5
<b>3</b>	<b>REHABILITATION FORECAST .....</b>	<b>6</b>
3.1	Rehabilitation Planning Schedule .....	6
3.2	Rehabilitation Maintenance and Corrective Actions.....	7
3.3	Rehabilitation Schedule.....	8
3.4	Subsidence Remediation For Underground Operations.....	9
3.5	Rehabilitation Research and Trials .....	9
<b>4</b>	<b>PLAN 2 .....</b>	<b>10</b>
4.1	Submission Of Plan 2 Spatial Data to The Mine Rehabilitation Portal .....	10
4.2	Submission Of Plan 2 Electronic Copy (Pdf).....	10
<b>5</b>	<b>MINING AND REHABILITATION .....</b>	<b>11</b>
5.1	Progressive Mining and Rehabilitation Statistics.....	11
<b>6</b>	<b>REHABILITATION COST ESTIMATE .....</b>	<b>12</b>

### LIST OF PLANS

Plan 2A	Mining and Rehabilitation – Year 1
Plan 2B	Mining and Rehabilitation – Year 2
Plan 2C	Mining and Rehabilitation – Year 3

### LIST OF TABLES

Table 1	Material Production Schedule During the Next Three Years
Table 2	List of Active Rehabilitation Research and Trials
Table 3	List of Inactive Rehabilitation Research and Trials
Table 4	Forecast Cumulative Disturbance and Rehabilitation Progression During the Next Three Years
Table 5	Progressive Rehabilitation Key Performance Indicators

**APPROVED DOCUMENT IS UNCONTROLLED WHEN PRINTED**

Title: Ashton Coal Forward Program		
Owner: Phil Brown		
Last Review: 12/04/2024	Next Review: 01/01/2025	Revision Number: 1

## 1 APPLICANT DETAILS

---

### 1.1 Applicant

#### 1.1.1 Applicant's Name

White Mining (NSW) Pty Limited

#### 1.1.2 Australian Company Number

+089 414 595

#### 1.1.3 Mine

Ashton Coal Mine

#### 1.1.4 Is this an amendment to an already submitted Forward Program (pursuant to clause 14 in Schedule 8A of the Mining Regulation 2016?)

No.

**APPROVED DOCUMENT IS UNCONTROLLED WHEN PRINTED**

Title: Ashton Coal Forward Program		
Owner: Phil Brown		
Last Review: 12/03/2024	Next Review: 01/01/2025	Revision Number: 1



## 2 SURFACE DISTURBANCE ACTIVITIES

### 2.1 Project Description

#### 2.1.1 Provide a description of the mining project. The description must be consistent with the development consent for the mine.

1,000 CHARACTERS

Ashton Coal Operations Pty Limited (ACOL) operates the ACP, located approximately 14km north-west of Singleton, NSW. The approved ACP includes:

- A now exhausted and predominantly rehabilitated North East Open Cut (NEOC), where the final void is utilised for reject and tailings disposal
- Multi-seam underground mine using longwall mining methods (Ashton Underground and ACOL-operated Ravensworth Underground Mine)
- Associated surface infrastructure for the underground mine that includes gas management and extraction infrastructure
- A CHPP, rail siding, site office and associated infrastructure
- Bowmans Creek Diversion which allows coal recovery from the underground mine while protecting surface water

The ACP was granted planning approval under Development Consent 309-11-2001-i, in October 2002 (as modified 6 July 2022). The current approval (approved in 2022) allows for extraction of ROM coal at a rate of up to 5.45Mtpa and for the undertaking of associated coal mining activities.

### 2.2 Exploration Activities

#### 2.2.1 Identify and describe exploration activities that are proposed or likely to be proposed to be carried out in areas within the mining leases in the next three years.

1,500 CHARACTERS

No further exploration activities for the NEOC area are scheduled to occur during the Forward Program Term. Exploration activities within the Ashton Underground area will provide base line geological and coal quality data for modelling and planning purposes. Current exploration projects at the ACP include seam continuity and splitting exploration.

### 2.3 Construction Activities

#### 2.3.1 Identify and describe any construction activities scheduled in the next three years.

1,500 CHARACTERS

Construction activities at the ACP and ACOL-operated RUM during the Forward Program term will include the installation of goaf and dewatering boreholes and surface pipelines. Borehole locations are indicative and consist of a surface pad approximately 30 metres (m) x 30 m above the Pikes Gully Seam.

**APPROVED DOCUMENT IS UNCONTROLLED WHEN PRINTED**

Title: Ashton Coal Forward Program		
Owner: Phil Brown		
Last Review: 12/03/2024	Next Review: 01/01/2025	Revision Number: 1

During Year 1, activities include construction of 5 boreholes above the Pikes Gully Seam associated with Longwall 403, one de-watering borehole and surface pipelines. During Year 2, activities include construction of 10 boreholes above the Pikes Gully Seam associated with Longwall 403, Longwall 404, Longwall 405 and Longwall 406, one de-watering borehole and surface pipe lines. No construction activities are proposed during Year 3.

## 2.4 Mining Schedule

### 2.4.1 Describe the method of mining development and sequencing and general mine features.

1,500 CHARACTERS

Underground mining during this Forward Program term intends to recover coal reserves from Panels LW207A, LW207B and LW208 within the Upper Lower Liddell Seam (ULLD) Seam. Extraction of coal reserves from the Pikes Gully Seam from the RUM area will also commence during this Forward Program term. Mining will be progressive, using longwall mining methods. The main headings of the ULLD Seam are aligned parallel to the New England Highway with longwall panels aligned parallel to the eastern boundary of Mining Lease (ML) 1533, extending from the New England Highway in the north to the Hunter River in the south. The western limit of mining is defined by the western limit of ML 1533.

Mining within the ULLD Seam at the ACP has continued and is expected to be completed in approximately May 2025. Longwall mining operations will transition to the ACOL-operated RUM area with first workings planned to be developed in early 2023. Secondary extraction of the Pikes Gully Seam at the RUM will commence in September 2025 and continue until 2028.

Future longwall mining will occur in the Middle Liddell Seam in the RUM area, followed by the Lower Barrett Seam in the Ashton Underground Mine area.

### 2.4.2 Describe the areas identified for emplacements, the sequencing of emplacements, construction and management.

1,500 CHARACTERS

ROM coal from the mine contains varying amounts of stone and ash that needs to be removed prior to sale into the export market. ROM coal from the underground mine is processed through the CHPP which results in the production of product coal, coarse rejects and fine rejects (tailings).

Coarse rejects have a bulk density of approximately 2.0 tonnes per cubic metre. Coarse rejects are currently used to fill available void space in the NEOC void. Coarse rejects may also be used for the construction of tailings pond walls within the NEOC void to act as a filter medium to enhance the recovery of process water from the tailings for use in the CHPP. Rejects trucks servicing the CHPP operate 24 hours per day, seven days per week in accordance with Condition 2.8 of Development Consent DA 309-11-2001-i.

Previously, the NEOC area was utilised as an emplacement area for overburden material. Since cessation of open cut mining operations, the NEOC area (excluding the NEOC Void) has been rehabilitated to a native ecosystem area.

Monitoring of the NEOC rehabilitation area includes assessment of areas rehabilitated to mixed woodland habitat (formerly "Trees Over Grass") and exotic pastures.

**APPROVED DOCUMENT IS UNCONTROLLED WHEN PRINTED**

Title: Ashton Coal Forward Program		
Owner: Phil Brown		
Last Review: 12/03/2024	Next Review: 01/01/2025	Revision Number: 1

### 2.4.3 Identify processing infrastructure activities and the location of tailings facilities and schedule for emplacement.

1,500 CHARACTERS

Tailings were previously processed through a thickener and are pumped to the old Ravensworth Void 4 Tailings Dam, where they are treated with coagulants and allowed to settle. Water is decanted from the tailings dam and pumped back to the process water dam for reuse on-site. Operations of the Ravensworth Void 4 Tailings Dam ceased in December 2022 with tailings generated from the processing of ROM coal currently being co-emplaced with coarse rejects at the NEOC void.

The deposition of the coarse rejects and tailings will take place only in the designated NEOC emplacement area on a 24-hour, 7 day week basis.

The emplacement process will utilise existing available equipment including rear dump haul trucks, D10 dozer, grader and water cart. Emplacement will continue until the specified stages have been filled to the finished surface level.

### 2.4.4 Describe waste disposal and materials handling operations over the next three years. This should include a discussion of disposal of putrescible waste, hydrocarbons, and management of contaminated soils.

1,500 CHARACTERS

Waste segregation and recycling is encouraged through providing appropriate recycling facilities. Materials that are available for recycling are collected and recycled off-site.

Materials that cannot be recycled are disposed of to a licensed landfill. Licenced contractors remove waste off-site to licensed landfills that may accept the category of waste.

Three on-site sewage management systems are used to service the underground mine bathhouse and administration facilities, the CHPP facilities, and the NEOC Workshop and bathhouse.

Acid mine drainage is not considered to be a concern at the ACP. As an ongoing precautionary measure, groundwater seepage and drainage from emplaced materials will be periodically tested for signs of acid rock drainage.

There are no currently defined areas of contaminated land within the ACP boundaries.

ACOL has an Operations Hazardous Chemicals Management Procedure and ChemAlert for all products stored and handled on the premises. All chemicals at the ACP are included in a chemical register set up on ChemAlert for hazardous goods stored and handled at the site (for Open Cut, CHPP and Underground operations). Oils, fuels, greases and chemicals are labelled and stored in designated, impermeable bunded areas or approved storage facilities and are only used on a prescribed basis. Appropriate barriers are in place to eliminate the potential for soil contamination. Bunded fuel and oil storage areas are located near the NEOC Workshop, CHPP Store and the Underground Pit Top Workshop.

**APPROVED DOCUMENT IS UNCONTROLLED WHEN PRINTED**

Title: Ashton Coal Forward Program		
Owner: Phil Brown		
Last Review: 12/03/2024	Next Review: 01/01/2025	Revision Number: 1

## 2.5 Key Production Milestones

**Table 1:  
Material Production Schedule During the Next Three Years**

Material	Unit	Year 1 Ending 30 December 2024	Year 2 Ending 30 December 2025	Year 3 Ending 30 December 2026
Stripped topsoil	Cubic metres (m <sup>3</sup> )	0	0	0
Rock/overburden	m <sup>3</sup>	0	0	0
Ore	Mega tonne (Mtn)	2.7	2.0	2.9
Reject material	Mtn	1.5	1.0	1.3
Product	Mtn	1.2	1.0	1.6

**APPROVED DOCUMENT IS UNCONTROLLED WHEN PRINTED**

Title: Ashton Coal Forward Program		
Owner: Phil Brown		
Last Review: 12/03/2024	Next Review: 01/01/2025	Revision Number: 1

## 3 REHABILITATION FORECAST

### 3.1 Rehabilitation Planning Schedule

#### 3.1.1 Provide a schedule, with defined milestones, outlining the rehabilitation planning activities (where applicable) that will be carried out over the next three years, to address potential knowledge gaps and to ensure that rehabilitation is undertaken as soon as reasonably practicable.

1,500 CHARACTERS

Coal extraction will continue at the ACP during this Forward Program term. Rehabilitation at the ACP is expected to be minimal until cessation of mining activities as the majority of disturbance is required for the life of the mine. Rehabilitation of subsidence impacts of the underground mining area will continue to be undertaken on a case-by-case basis during mining operations.

In previously rehabilitated areas, ongoing maintenance activities will include controlling weeds and pests, repairing landforms, re-seeding and application of maintenance fertilisers as required.

Rehabilitation of subsidence impacts will also be undertaken, as required, including surface crack backfilling, compaction, and vegetation enhancement. Ongoing repairs will be made to any subsidence-damaged infrastructure, including the right of way access road, in accordance with the approved subsidence monitoring and management plans.

Maintenance works, such as erosion and sediment control, and ongoing control of weeds and feral pests will also be undertaken as required. Additional feral pest control options may also be investigated including those targeting feral cats, hares, rabbits and feral pigs.

Ongoing weed control will continue to be undertaken, including manual methods and use of cut and paste herbicide where existing native trees and shrubs are present to minimise collateral mortality associated with broadcast spraying.

#### 3.1.2 Provide an overview of relevant stakeholder consultation that will be carried out over the next three years.

1,500 CHARACTERS

Consultation with landowners, residents, stakeholders and regulatory bodies surrounding and associated with ACOL has been consistent and open through personal contact, newsletters and public meetings. ACOL has committed to a community program which includes undertaking activities that aim to reduce the impact of mining on the residents of Camberwell.

ACOL has a Community Consultative Committee that monitors compliance with conditions of consent and provides a forum for important community discussion. Members are from the local Camberwell community and Singleton Council (SC). DPE officers have an open invitation to all meetings, which are conducted every four months and provide a direct forum for the community to communicate environmental and operational concerns with site management, SC and regulatory authorities. ACOL has also implemented a community enquiry and complaints telephone line (1800 657 639) to enable direct contact with ACOL personnel.

**APPROVED DOCUMENT IS UNCONTROLLED WHEN PRINTED**

Title: Ashton Coal Forward Program		
Owner: Phil Brown		
Last Review: 12/03/2024	Next Review: 01/01/2025	Revision Number: 1

ACOL works closely with local Aboriginal people through professional engagement and consultation on cultural heritage management.

An Aboriginal Community Consultative Forum is held twice per year with the representatives of the Registered Aboriginal Parties to provide an update of activities at Ashton Coal.

Ongoing consultation will continue through this Forward Program term including regular discussions with the parties mentioned above.

**3.1.3 Provide an overview of rehabilitation studies, risk assessments and/or design work associated with finalising the rehabilitation methodologies relating to establishment of the final landform, surface water management, final void management, and tailings dam decommissioning that will be carried out over the next three years.**

1,500 CHARACTERS

Risks associated with rehabilitation were identified during a rehabilitation risk assessment undertaken in July 2022 and February 2023, which is detailed in the ACP's RMP. Therefore, no rehabilitation studies, risk assessments and/or design work associated with finalising rehabilitation methodologies relating to establishment of the final landform, surface water management, final void management and tailings dam decommissioning are proposed within this Forward Program term.

**3.2 Rehabilitation Maintenance and Corrective Actions**

**3.2.1 Include a detailed description of the rehabilitation maintenance and corrective action measures that will be carried out to address all rehabilitation performance issues and/or knowledge gaps identified in the latest annual rehabilitation report.**

1,500 CHARACTERS

The ongoing annual rehabilitation monitoring program will continue throughout this Forward Program term. The program will assess the recovery of rehabilitation areas across the site. The program will be based on the performance indicators outlined in ACP's RMP and will utilise methodologies that can provide quantitative data to assess changes occurring over time.

The program compares the progress of a number of rehabilitation sites, against a set of completion criteria obtained from measurement made in areas of remnant woodland and grassland communities in the local area.

The monitoring methodology adopted is a standard and simple procedure that can be replicated over any vegetation community or rehabilitation area and allows results to compare similar communities. The monitoring methodologies utilise a combination of the following:

- Landscape Function Analysis;
- Soil Analysis;
- Assessment of Ecosystem Characteristics;
- Pasture Productivity Assessment;
- Land Capability Assessment;

**APPROVED DOCUMENT IS UNCONTROLLED WHEN PRINTED**

Title: Ashton Coal Forward Program		
Owner: Phil Brown		
Last Review: 12/03/2024	Next Review: 01/01/2025	Revision Number: 1

- Photographic Monitoring; and
- Subsidence Monitoring

Amendments to the monitoring programs during the post-closure phase, following identification of any rehabilitation performance issues or knowledge gaps in the Annual Rehabilitation Report, will be reflected in the relevant environmental management plan revisions as well as future iterations of the ARFP. It is expected that the residual monitoring programs will be undertaken for approximately ten years following mine closure.

### 3.3 Rehabilitation Schedule

#### 3.3.1 Outline the key activities required to implement the mining and rehabilitation schedule for the next three years. The information in this section must be consistent with the spatial depiction of progressive rehabilitation shown on Plan 2. Note: This section must describe how the mining and rehabilitation schedule has been developed to minimise disturbance and progressively rehabilitate as soon as reasonably practicable.

1,500 CHARACTERS

Rehabilitation during this Forward Program term will principally relate to rehabilitation of disturbance associated with gas drainage network development and other minor infrastructure projects, as needed. Should favourable meteorological conditions persist, the first block of the woodlands rehabilitation conversion program may be undertaken within the NEOC area.

Rehabilitation activities forecast for this Forward Program term include:

- progressively rehabilitate any lands within the ACP site boundaries which may have been disturbed by mining related operations;
- continue maintenance on completed rehabilitation of the NEOC area (including ongoing weed and pest control);
- progressive rehabilitation, including revegetation works, of Bowmans Creek in line with the Bowmans Creek Diversion, Construction Mining Operations Plan and Bowmans Creek Diversion Rehabilitation Strategy;
- progressive remediation of disturbed areas above the underground mining area including rehabilitation of subsidence troughs and if required, temporary drainage works;
- continued monitoring and remediation (if required as a result of subsidence impacts) of the Southern Woodland Conservation Area;
- further investigation into elevated soil sulfur and iron levels at a number of monitoring sites and the casuarina and eucalypt reference sites is also planned; and
- rehabilitation of constructed goaf and dewatering boreholes proposed at the ACOL-operated RUM area.

**APPROVED DOCUMENT IS UNCONTROLLED WHEN PRINTED**

Title: Ashton Coal Forward Program		
Owner: Phil Brown		
Last Review: 12/03/2024	Next Review: 01/01/2025	Revision Number: 1

### 3.4 Subsidence Remediation For Underground Operations

#### 3.4.1 Provide an overview of the nature and scope of any subsidence monitoring and expected remediation works proposed to be conducted over the next three years.

1,000 CHARACTERS

Mine subsidence impacts are identified via the Subsidence Monitoring Program prepared by ACOL.

Where required, surface cracks will be reshaped, scarified and stabilised, topsoil applied if necessary and then direct seeded. Interim erosion control devices such as hay bales and geotextile barriers will be provided as necessary to divert surface runoff away from the remediated area until sufficient ground cover has been established. Nick points in grassland or woodland areas will be reshaped and remediated in a similar manner or may be managed by the use of coir log dams which may be installed at nick points to assist in slowing surface water flows allowing siltation upslope of the log.

Minor ephemeral drainage lines may develop nick points that will require reshaping to ensure velocities and scour characteristics are not altered. Once reshaped, any steepened areas that may remain unstable will be lined with loosely placed rock to dissipate runoff energy.

### 3.5 Rehabilitation Research and Trials

#### 3.5.1 List of Active Rehabilitation Research and Trials

**Table 2:  
List of Active Rehabilitation Research and Trials**

Project/trial name	Objective of trial/project 200 CHARACTERS	Methodology 500 CHARACTERS	Expected date of completion dd/mm/yyyy	Status	On track
-	-	-	-	-	-

#### 3.5.2 List of Inactive Rehabilitation Research and Trials.

**Table 3:  
List of Inactive Rehabilitation Research and Trials**

Project/trial name	Objective of trial/project 200 CHARACTERS	Methodology 500 CHARACTERS	Expected date of completion dd/mm/yyyy	Status	On track
-	-	-	-	-	-

**APPROVED DOCUMENT IS UNCONTROLLED WHEN PRINTED**

Title: Ashton Coal Forward Program		
Owner: Phil Brown		
Last Review: 12/03/2024	Next Review: 01/01/2025	Revision Number: 1



## 4 PLAN 2

---

### 4.1 Submission Of Plan 2 Spatial Data to The Mine Rehabilitation Portal

Spatial data themes to be submitted to support Plan 2:

1. Forecast data – Year 1 submitted
2. Forecast data – Year 2 submitted
3. Forecast data – Year 3 submitted

### 4.2 Submission Of Plan 2 Electronic Copy (Pdf)

*Attach electronic copies (PDF) of Plan 2, which must be prepared using the spatial data submitted through the mine rehabilitation portal.*

*The Plan 2 electronic copy (PDF) must reference the mine rehabilitation portal submission ID numbers for each theme. Submission ID numbers are unique identifiers generated by the mine rehabilitation portal to identify the current data submission for each data theme uploaded by the lease holder and can be found in the 'Files Submitted' tab following successful submission of data.*

#### 4.2.1 Attach Plan 2A Mining and Rehabilitation – Year 1. Please compress your files into one file (i.e. zip folder) if you have multiple files to attach.

Plan 2A attached.

#### 4.2.2 Attach Plan 2B Mining and Rehabilitation – Year 2. Please compress your files into one file (i.e. zip folder) if you have multiple files to attach.

Plan 2B attached.

#### 4.2.3 Attach Plan 2C Mining and Rehabilitation – Year 3. Please compress your files into one file (i.e. zip folder) if you have multiple files to attach.

Plan 2C attached.

**APPROVED DOCUMENT IS UNCONTROLLED WHEN PRINTED**

Title: Ashton Coal Forward Program		
Owner: Phil Brown		
Last Review: 12/03/2024	Next Review: 01/01/2025	Revision Number: 1

## 5 MINING AND REHABILITATION

### 5.1 Progressive Mining and Rehabilitation Statistics

#### 5.1.1 Three-yearly forecast cumulative disturbance and rehabilitation progression

AUTO-GENERATED FROM SPATIAL DATA

**Table 4:**  
**Forecast Cumulative Disturbance and Rehabilitation Progression During the Next Three Years**

	<b>Year 1</b> Ending 31 December 2023	<b>Year 2</b> Ending 31 December 2024	<b>Year 3</b> Ending 31 December 2025
Total Disturbance Footprint – Surface Disturbance	AUTO-GENERATED	AUTO-GENERATED	AUTO-GENERATED
Total Active Disturbance (ha)	AUTO-GENERATED	AUTO-GENERATED	AUTO-GENERATED
Rehabilitation – Land Preparation (ha)	AUTO-GENERATED	AUTO-GENERATED	AUTO-GENERATED
Ecosystem and Land Use Establishment (ha)	AUTO-GENERATED	AUTO-GENERATED	AUTO-GENERATED

#### 5.1.2 Rehabilitation key performance indicators (KPIs)

AUTO-GENERATED FROM SPATIAL DATA

**Table 5:**  
**Progressive Rehabilitation Key Performance Indicators**

	<b>Year 1</b> Ending 31 December 2023	<b>Year 2</b> Ending 31 December 2024	<b>Year 3</b> Ending 31 December 2025
Total New Active Disturbance Area During Reporting Period (ha)	AUTO-GENERATED	AUTO-GENERATED	AUTO-GENERATED
Total New Area of Land Proposed for Active Rehabilitation During the Reporting Period (ha)	AUTO-GENERATED	AUTO-GENERATED	AUTO-GENERATED
Annual Rehabilitation to Disturbance Ratio (ha)	AUTO-GENERATED	AUTO-GENERATED	AUTO-GENERATED

**APPROVED DOCUMENT IS UNCONTROLLED WHEN PRINTED**

Title: Ashton Coal Forward Program		
Owner: Phil Brown		
Last Review: 12/03/2024	Next Review: 01/01/2025	Revision Number: 1

## 6 REHABILITATION COST ESTIMATE

All authority holders are required to lodge a security deposit with the department to cover the government's full costs in undertaking rehabilitation in the event of default by the authority holder.

The Rehabilitation Cost Estimate is used by the department to help determine the amount of the security. Refer to [Rehabilitation cost estimate guidelines](#) for more information.

The Rehabilitation Cost Estimate must include the cost of fulfilling all rehabilitation liabilities, including liabilities associated with previous and on-going surface disturbance activities.

The following documents must be emailed separately to [nswresourcesregulator@service-now.com](mailto:nswresourcesregulator@service-now.com):

- a Rehabilitation Cost Estimate using the Department's [Rehabilitation Cost Estimation Tool](#), and
- a completed Form [Rehabilitation Completion and/or Review of Rehabilitation Cost Estimate](#) (only required where there is a decrease in the security deposit and/or you are seeking confirmation from the department that rehabilitation has been completed).

### 6.1.1 Latest assessed deposit determination for is \$.

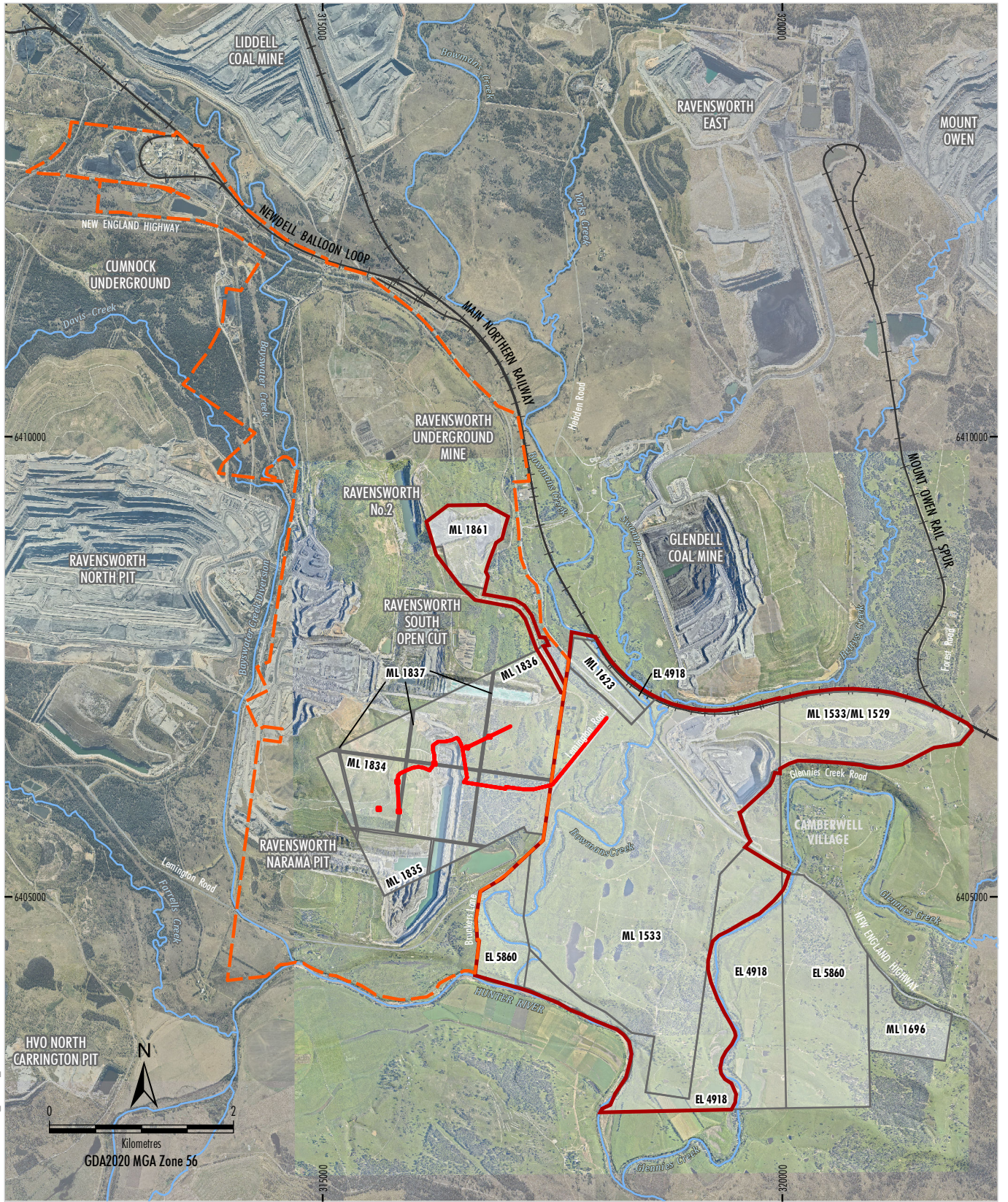
The RCE is to be submitted using the online form on the Resources Regulator Portal.

**APPROVED DOCUMENT IS UNCONTROLLED WHEN PRINTED**

Title: Ashton Coal Forward Program		
Owner: Phil Brown		
Last Review: 12/03/2024	Next Review: 01/01/2025	Revision Number: 1



ACQ-18-03A-FMP 2024 v1\_PLAN 2A\_Rev A



- LEGEND**
- DA 309-11-2001-i Project Approval Boundary
  - DA 104/96 RUM Project Approval Boundary
  - Coal - Current Titles
  - Railway
  - Watercourse
  - Forecast Disturbance

Source: ACOL (2024); RUM (2024); NSW Spatial Services (2024)  
 Orthophoto Mosaic: Ashton Coal (Dec 2021); Ravensworth (2021)

Date prepared: 12-04-2024

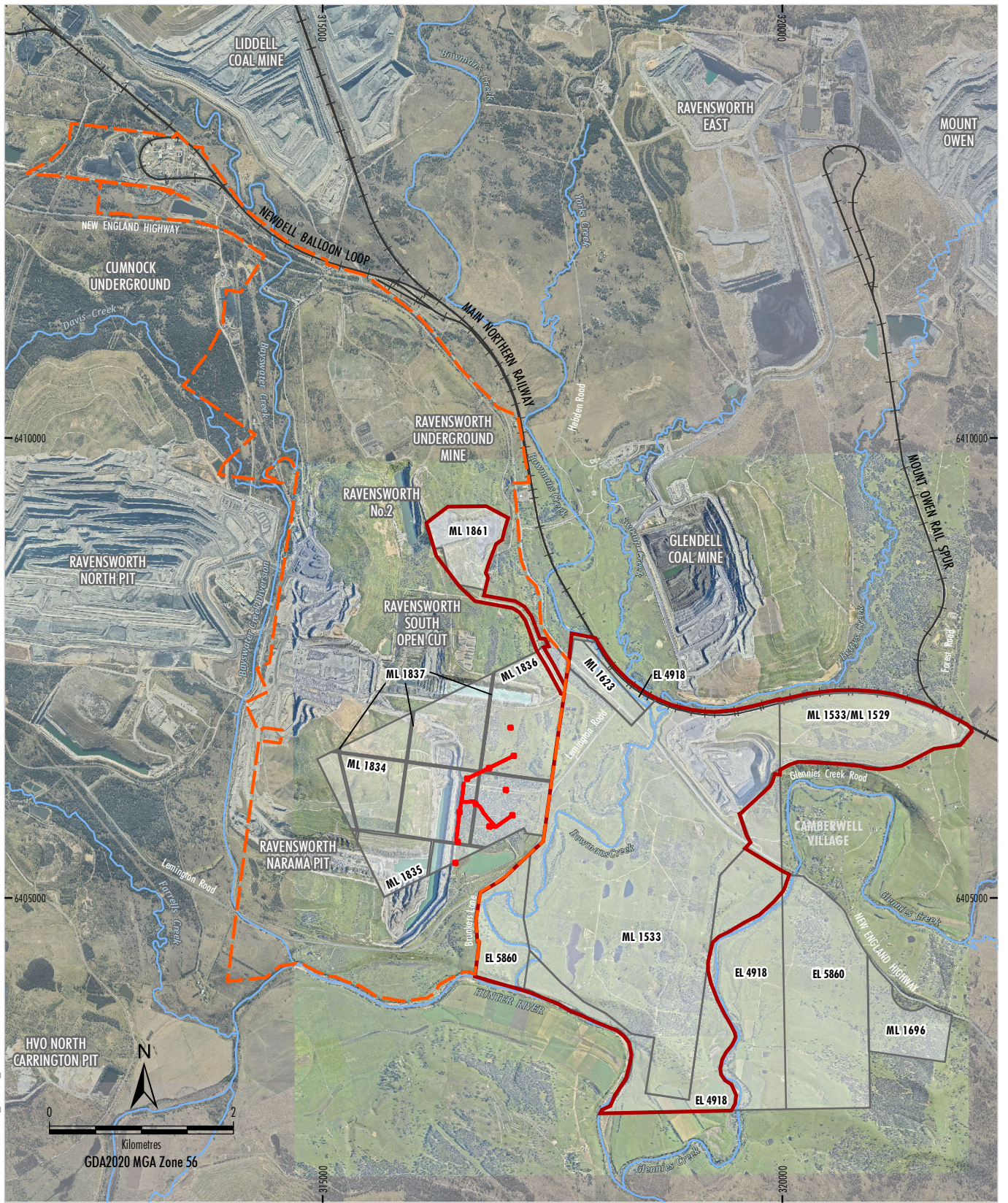


**ASHTON COAL MINE  
 FORWARD PROGRAM 2024 - 2026**

Mining and Rehabilitation  
 - Year 1 (December 2024)



ACQ-18-03A-FMP 2024 v1\_PLAN 2B\_Rev A



- LEGEND**
- DA 309-11-2001-i Project Approval Boundary
  - DA 104/96 RUM Project Approval Boundary
  - Coal - Current Titles
  - Railway
  - Watercourse
  - Forecast Disturbance

Source: ACOL (2024); RUM (2024); NSW Spatial Services (2024)  
 Orthophoto Mosaic: Ashton Coal (Dec 2021); Ravensworth (2021)

Date prepared: 12-04-2024

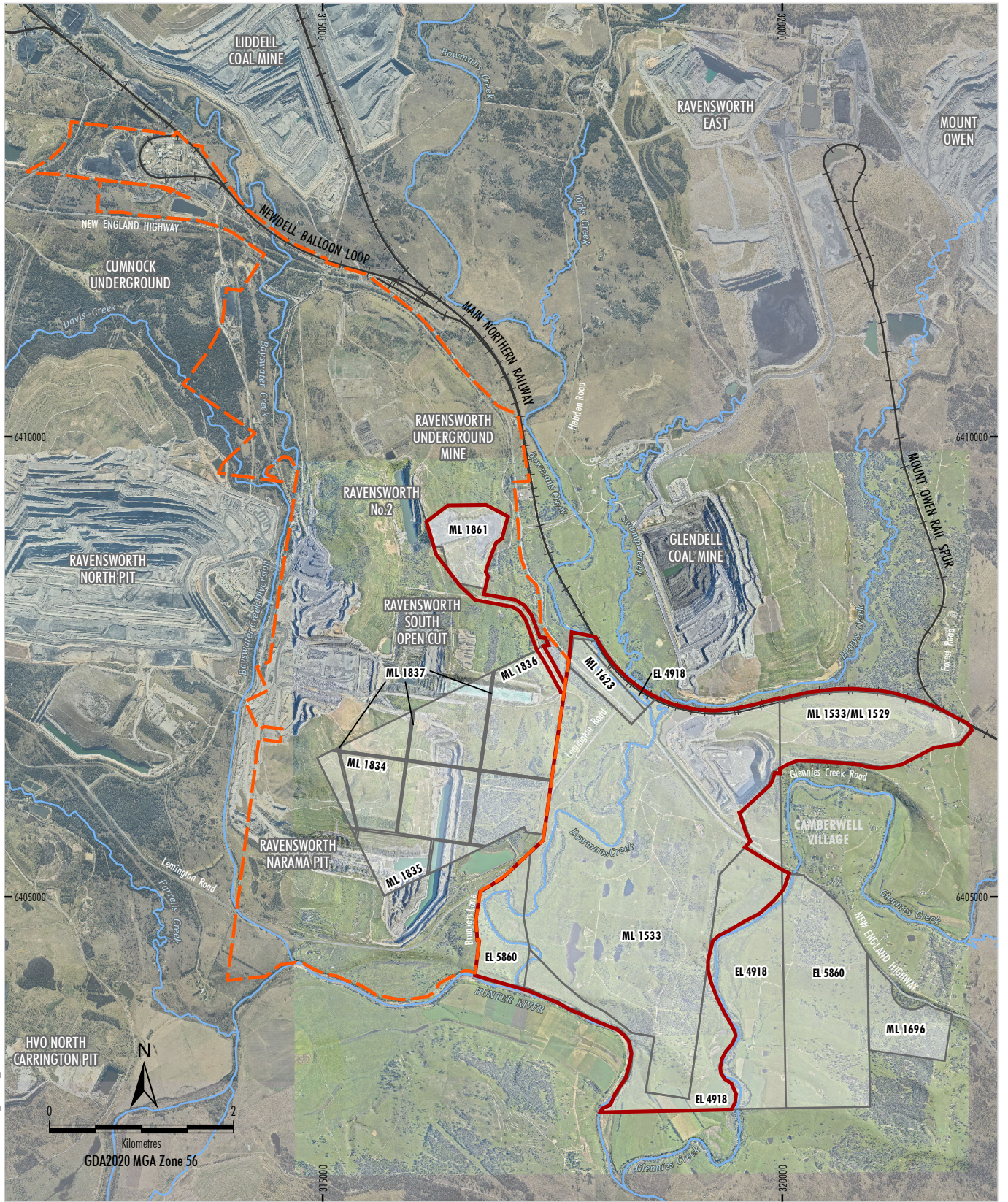







**ASHTON COAL MINE  
 FORWARD PROGRAM 2024 - 2026**

Mining and Rehabilitation  
 - Year 2 (December 2025)



ACQ-18-03A FMP 2024 v1\_PLAN 2C\_Rev B



- LEGEND**
-  DA 309-11-2001-i Project Approval Boundary
  -  DA 104/96 RUM Project Approval Boundary
  -  Coal - Current Titles
  -  Railway
  -  Watercourse

Source: ACOL (2024); RUM (2024); NSW Spatial Services (2024)  
 Orthophoto Mosaic: Ashton Coal (Dec 2021); Ravensworth (2021)  
 Date prepared: 15-04-2024



**ASHTON COAL MINE  
 FORWARD PROGRAM 2024 - 2026**

Mining and Rehabilitation  
 - Year 3 (December 2026)