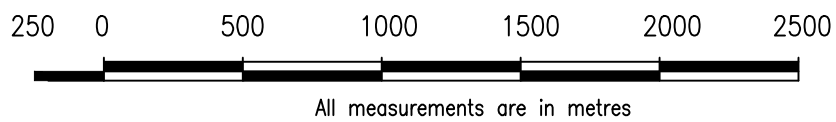
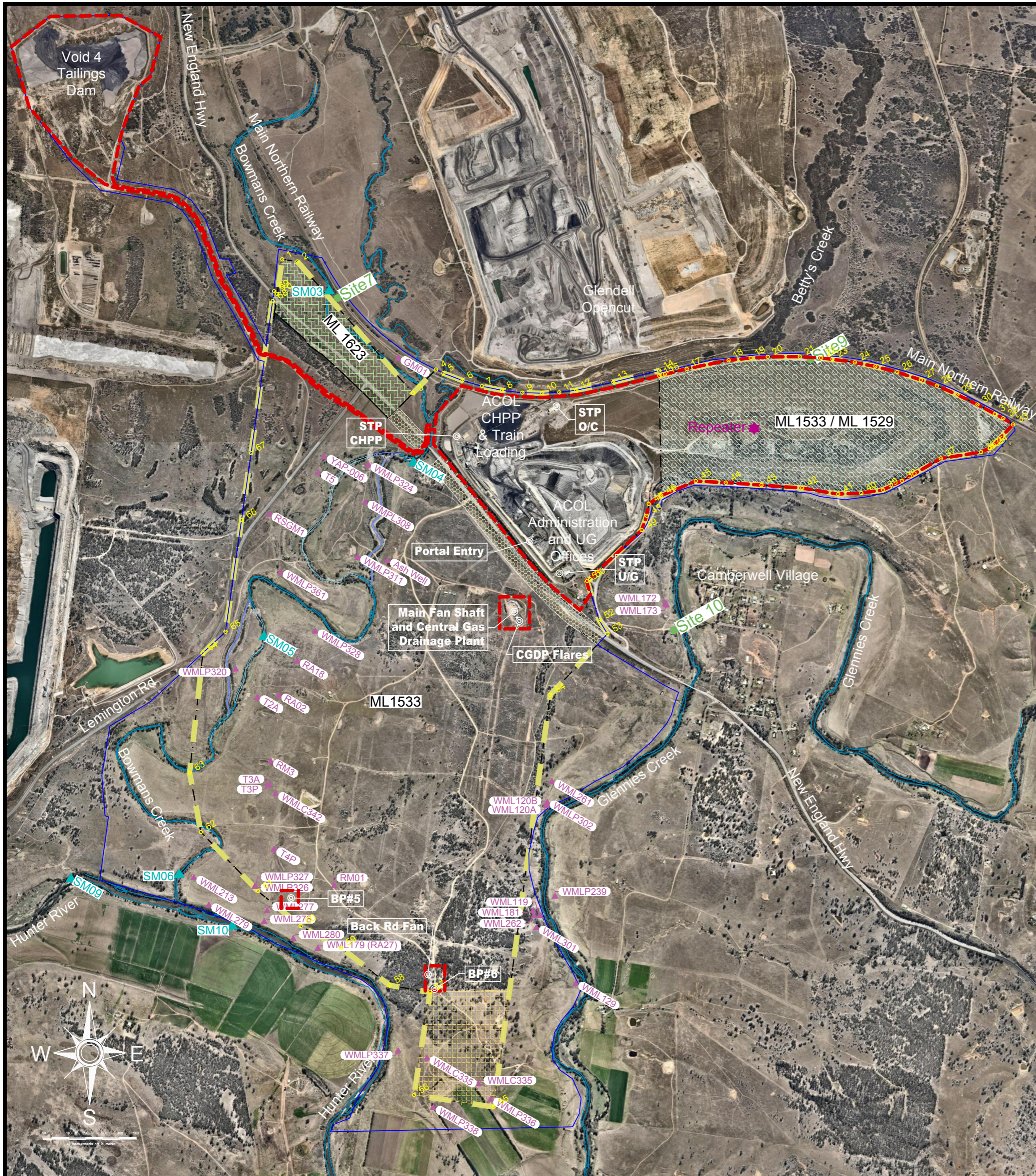


CO-ORDINATE TABLE					
MGA2020 ZONE 56					
Point #	Easting	Northing	Point #	Easting	Northing
1	316131.7	6409072.2	51	321944.8	6406902.3
2	316362.9	6409252.5	52	321994.6	6406875.7
3	316780.3	6409257.2	53	322051.9	6406838.7
4	317016.2	6409129.8	54	321932.0	6406710.3
5	316951.9	6408892.3	55	321862.9	6406675.6
6	316889.1	6408843.0	56	321625.4	6406637.6
7	316811.2	6408643.1	57	321395.3	6406505.7
8	316789.2	6408581.2	58	321282.9	6406452.2
9	316775.6	6408531.9	59	321154.8	6406432.7
10	316801.7	6408477.2	60	321018.7	6406427.4
11	316756.2	6408287.5	61	320805.9	6406462.8
12	317095.6	6408226.8	62	320565.0	6406480.2
13	317196.9	6408164.3	63	320354.6	6406494.6
14	317279.8	6408050.3	64	320177.4	6406504.2
15	317365.2	6407819.0	65	319973.7	6406418.1
16	317418.9	6407816.1	66	319898.8	6406369.4
17	317442.0	6407768.2	67	319887.0	6406299.3
18	317488.3	6407804.6	68	319857.7	6406214.8
19	317676.7	6407568.8	69	319552.5	6405924.0
20	317684.9	6407626.4	70	319534.6	6405913.8
21	317703.7	6407608.9	71	319607.3	6405679.9
22	317733.0	6407815.4	72	319655.3	6405601.5
23	317822.7	6407803.1	73	319317.5	6405240.6
24	318505.8	6407024.4	74	319077.4	6403495.3
25	318641.3	6407163.8	75	318982.2	6402803.5
26	318685.6	6407142.8	76	318512.4	6402873.7
27	318798.2	6407099.2	77	318606.8	6403481.4
28	318914.1	6407065.2	78	318367.4	6403522.9
29	319032.4	6407041.1	79	318081.5	6403745.0
30	319152.5	6407027.1	80	317841.7	6403873.4
31	319270.0	6407023.6	81	317590.3	6404079.4
32	319370.5	6407029.2	82	317252.7	6404429.0
33	319471.1	6407042.0	83	317186.1	6404779.7
34	319689.4	6407088.9	84	317264.8	6405488.4
35	319960.5	6407158.0	85	317398.1	6405613.3
36	319961.1	6407127.0	86	317407.5	6405674.9
37	320123.5	6407168.2	87	317216.7	6405702.1
38	320371.2	6407218.5	88	317191.4	6405753.8
39	320501.2	6407232.4	89	315671.8	6405011.6
40	320602.3	6407238.7	90	314940.6	6406508.6
41	320791.6	6407240.0	91	317314.2	6407667.8
42	320918.2	6407231.9	92	317333.4	6407682.9
43	320985.4	6407225.1	93	317325.0	6407697.0
44	321117.5	6407205.9	94	317208.9	6408011.8
45	321238.4	6407181.9	95	317141.9	6408104.2
46	321367.5	6407148.6	96	317066.5	6408150.7
47	321507.1	6407102.6	97	316659.2	6408223.7
48	321602.4	6407068.3	98	316491.1	6408383.1
49	321723.1	6407015.7	99	316237.3	6408716.2
50	321841.4	6406956.8			

LEGEND

- Ashton Environmental Protection Licence Area
- Surface Infrastructure Area
- Indicative Location of Dewatering Pipeline





Schedule of Colliery Holding Corners											
Corner	Easting	Northing	Corner	Easting	Northing	Corner	Easting	Northing	Corner	Easting	Northing
1	317732.5	6407814.0	19	320500.7	6407231.0	37	321624.9	6406636.2	55	318981.7	6402802.1
2	317822.2	6407801.7	20	320601.8	6407237.3	38	321394.8	6406504.3	56	318511.9	6402872.3
3	318505.3	6407023.0	21	320791.1	6407238.6	39	321282.4	6406450.8	57	318606.3	6403480.0
4	318640.8	6407162.4	22	320917.7	6407230.5	40	321154.3	6406431.3	58	318366.9	6403521.5
5	318685.1	6407141.4	23	320984.9	6407223.7	41	321018.2	6406426.0	59	318081.0	6403743.6
6	318797.7	6407097.8	24	321117.0	6407204.5	42	320805.4	6406461.4	60	317841.2	6403872.0
7	318913.6	6407063.8	25	321237.9	6407180.5	43	320564.5	6406478.8	61	317589.8	6404078.0
8	319031.9	6407039.7	26	321367.0	6407147.2	44	320354.1	6406493.2	62	317252.2	6404427.6
9	319152.0	6407025.7	27	321506.6	6407101.2	45	320176.9	6406502.8	63	317185.6	6404778.3
10	319269.5	6407022.2	28	321601.9	6407066.9	46	319973.2	6406416.7	64	317264.3	6405486.9
11	319370.0	6407027.7	29	321722.6	6407014.3	47	319898.3	6406368.0	65	317397.6	6405611.9
12	319470.6	6407040.5	30	321840.9	6406955.4	48	319886.5	6406297.9	66	317492.0	6406272.0
13	319688.9	6407087.5	31	321944.3	6406900.9	49	319857.2	6406213.3	67	317548.7	6406667.5
14	319960.0	6407156.6	32	321994.1	6406874.3	50	319552.0	6405922.5	68	317676.2	6407567.3
15	319960.6	6407125.6	33	322051.4	6406837.3	51	319534.1	6405912.4	69	317684.4	6407625.0
16	319993.9	6407134.1	34	321931.5	6406708.9	52	319606.8	6405678.5	70	317703.2	6407607.5
17	320123.0	6407166.8	35	321914.6	6406697.5	53	319654.8	6405600.1			
18	320370.7	6407217.1	36	321862.4	6406674.2	54	319317.0	6405239.2			

Schedule of Methane Flares Sewage Treatment Plants Dewatering Boreholes / Points		
Easting	Northing	Name
319135	6405675	Methane Flares
319380	6405955	STP - U/G
318765	6406765	STP - CHPP
319355	6406945	STP - O/C
317783	6404028	BP#5
318633	6403499	BP#6
319195	6406148	Portal Entry

- Key**
- Ashton Colliery Holding Boundary
 - Existing Lease Boundaries
 - Surface Infrastructure Areas subject to EPL
 - Development Consent Boundary
 - Land is subject to the surface mining lease but Ashton is not the occupier in respect of it. No scheduled activities occur on the surface of this land. Accordingly, it is not part of EPL
 - SM7 - Surface Water Monitoring location
 - Site 8 - Air Quality TEOM Station (PM10)
 - Repeater - Meteorological Station.
 - RM01 - Ground Water Monitoring location

Title	Limitations
ML1533	New England Highway Road reserve from 5m to unlimited depth
	Area of 128.7ha covered by ML1529 from surface to a depth of 20m
ML1529	from 20m to unlimited depth
ML1623	From 5m below surface to 900m below AHD

All unhatched areas within the bounds of the colliery holding includes the surface and land below to an unlimited depth

Jeff Peck
 Jeff Peck
 Registered Mining Surveyor

AshtonCoal
 PO Box 699 Singleton NSW 2330
 Phone 61+ 02 6576 1111 Fax 61+ 02 6576 1122

**ASHTON UNDERGROUND MINE
 Environment Protection Licence 11879
 Premises Boundary, Surface Infrastructure**

Date	Scale:	Drawn	Checked	Approved	Drawing No.
30/08/19	1:20000	JIP	LC	PB	A-1005_Surf
					Revision No.
					2019
					Sheet Size
					A2



Schedule of Colliery Holding Corners											
Corner	Easting	Northing	Corner	Easting	Northing	Corner	Easting	Northing	Corner	Easting	Northing
1	317732.5	6407814.0	19	320500.7	6407231.0	37	321624.9	6406636.2	55	318981.7	6402802.1
2	317822.2	6407801.7	20	320601.8	6407237.3	38	321394.8	6406504.3	56	318511.9	6402872.3
3	318505.3	6407023.0	21	320791.1	6407238.6	39	321282.4	6406450.8	57	318606.3	6403480.0
4	318640.8	6407162.4	22	320917.7	6407230.5	40	321154.3	6406431.3	58	318366.9	6403521.5
5	318685.1	6407141.4	23	320984.9	6407223.7	41	321018.2	6406426.0	59	318081.0	6403743.6
6	318797.7	6407097.8	24	321117.0	6407204.5	42	320805.4	6406461.4	60	317841.2	6403872.0
7	318913.6	6407063.8	25	321237.9	6407180.5	43	320564.5	6406478.8	61	317589.8	6404078.0
8	319031.9	6407039.7	26	321367.0	6407147.2	44	320354.1	6406493.2	62	317252.2	6404427.6
9	319152.0	6407025.7	27	321506.6	6407101.2	45	320176.9	6406502.8	63	317185.6	6404778.3
10	319269.5	6407022.2	28	321601.9	6407066.9	46	319973.2	6406416.7	64	317264.3	6405486.9
11	319370.0	6407027.7	29	321722.6	6407014.3	47	319898.3	6406368.0	65	317397.6	6405611.9
12	319470.6	6407040.5	30	321840.9	6406955.4	48	319886.5	6406297.9	66	317492.0	6406272.0
13	319688.9	6407087.5	31	321944.3	6406900.9	49	319857.2	6406213.3	67	317548.7	6406667.5
14	319960.0	6407156.6	32	321994.1	6406874.3	50	319552.0	6405922.5	68	317676.2	6407567.3
15	319960.6	6407125.6	33	322051.4	6406837.3	51	319534.1	6405912.4	69	317684.4	6407625.0
16	319993.9	6407134.1	34	321931.5	6406708.9	52	319606.8	6405678.5	70	317703.2	6407607.5
17	320123.0	6407166.8	35	321914.6	6406697.5	53	319654.8	6405600.1			
18	320370.7	6407217.1	36	321862.4	6406674.2	54	319317.0	6405239.2			

Schedule of ACOL Water, Noise, Air and Weather Monitoring			
Easting	Northing	Name	Purpose
318011	6407623	SM03	Water_Surface
318507	6406607	SM04	Water_Surface
317625	6405580	SM05	Water_Surface
317124	6404172	SM06	Water_Surface
316484	6404147	SM09	Water_Surface
317438	6403869	SM10	Water_Surface
320554	6405839	N3	Noise
320297	6405670	N2	Noise
319776	6404101	N4	Noise
320049	6405620	Site 10	Air Quality
318060	6407586	Site7	Air Quality
320263	6405140	Site 2	Air Quality
320854	6407223	Site9	Air Quality
320522	6406815	Repeater	Weather Stn

Schedule of Methane Flares Sewage Treatment Plants Dewatering Boreholes / Points		
Easting	Northing	Name
319135	6405675	Methane Flares
319380	6405955	STP - U/G
318765	6406765	STP - CHPP
319355	6406945	STP - O/C
317783	6404028	BP#5
318633	6403499	BP#6
319195	6406148	Portal Entry

NAG	Associated Noise Monitoring Location	Day (LAeq 15 min)	Evening (LAeq 15 min)	Night (LAeq 15 min)	Night (LA1 1 min)
01	N2				
02	N3	38	38	36	46
03	N4				

- Key
- Ashton Colliery Holding Boundary
 - Existing Lease Boundaries
 - Development Consent Boundary
 - Noise Assessment Group
 - RM01 - Ground Water Monitoring location
 - SM7 - Surface Water Monitoring location
 - Site 8 - Air Quality TEOM Station (PM10)
 - Repeater - Meteorological Station
 - N3 - Noise Monitoring
 - DG6 - Depositional Dust monitoring
 - Land is subject to the surface mining lease but Ashton is not the occupier in respect of it. No scheduled activities occur on the surface of this land. Accordingly, it is not part of EPL.

Note: Noise levels are applicable while no open cut operations, as per DA 309-11-201-1, Appendix 6, Condition 2.

Jeff Peck
 Jeff Peck
 Registered Mining Surveyor

AshtonCoal
 PO Box 699 Singleton NSW 2330
 Phone 61+ 02 6576 1111 Fax 61+ 02 6576 1122

**ASHTON UNDERGROUND MINE
 Environment Protection Licence 11879
 Premises Boundary, Monitoring**

Date 30/08/19	Scale: 1:20000	Drawn JIP	Checked LC	Approved PB	Drawing No. A-1005_Mon
					Revision No. 2019
					Sheet Size A2