

**MOOLARBEN COAL OPERATIONS - COMMUNITY CONSULTATIVE COMMITTEE
MEETING No. 43**

Date: Tuesday 5th December 2017
Time: 4:06pm
Location: Moolarben Coal Open Cut Administration Board Room, Ulan
Attendance: Independent Chairperson
Lisa Andrews (LA)

Community Members

Aleisha Lonsdale (AL)
Andrew Palmer (AP)
Bev Smiles (BS)
David Stokes (DS)
Cr (Mayor) Des Kennedy (DK)
Helen Ungaro (HU)
Julia Imrie (JI)

Moolarben Coal Operations

Steve Archinal (SA)
Graham Chase (GC)
Mathew Croake (MCR)
Michelle Cavanagh (MCA)
Trent Cini (TC)

Apologies

Councillor O'Neil (Mid-Western Regional Council)
Councillor Cavalier (Mid-Western Regional Council)

A hard copy of the Agenda and Meeting 43 Presentation was provided to all meeting attendees.

1. Introduction and Welcome

Lisa Andrews (LA) confirmed she is engaged by Moolarben Coal Operations (MCO) to chair the CCC meeting.

2. Apologies

Councillor O'Neil and Councillor Cavalier (Mid-Western Regional Council).

3. Business Arising from Finalised Minutes

There was no business arising from the minutes of Meeting 42.

4. Correspondence

Correspondence to the CCC since meeting 42 included the following:

- 20/9/17 – Draft minutes sent to CCC members from LA for review/comment, however, resent on 30/9/17 with an extended time frame due to a technical difficulty. Comments received back from BS & JI.
- 17/10/17 – Finalised minutes sent from LA to CCC members.
- 18/10/17 – Email from Mid-Western Regional Council advising that on 20th September 2017 it resolved to appoint Cr Paul Cavalier and Cr John O’Neill as Council’s representatives on the CCC until the end of August 2018. Both Councilors are on the CCC email distribution list.
- 18/10/17 – Acknowledgement email back to MWRC from LA.
- 9/11/17 – Email/Letter from Subsidence Advisory NSW, advising of the changes to the mine subsidence compensation system.
- 10/11/17 – Mine Subsidence Compensation information forwarded from LA to CCC members
- 11/11/17 – Email from BS to LA advising that MOD 14 was on exhibition & requesting a hard copy of the EA for the Mudgee District Environment Group.
- 11/11/17 – Email to CCC members from LA with Modification information and advising that the closing date for submissions is 7/12/17.
- 13/11/17 – Email from JI to LA regarding water issues associated with the MOD.
- 29/11/17 – Email form DS to LA with his completed Declaration of Interest forms
- 5/12/17 - Email from MWRC to LA advising that Mayor Des Kennedy would be representing the Council at Meeting 43.

LA moved the Correspondence. AP seconded the Correspondence.

5. CCC Update Presentation

GC provided an update on community, the opening of the Coal Services Moolarben Mines Rescue Station and Moolarben Underground, an operational update, exploration, environmental monitoring, complaints, rehabilitation, an Underground Project update and an employment update.

JI questioned the nature of works being carried out between Bobadeen Creek and the Ulan Road. TC advised trees were being planted on the offset property.

BS questioned where the noise complaints were coming from. GC advised the complaints were primarily coming from the Cooks Gap region.

BS requested a copy of the area of disturbance compared to the areas of rehabilitation. GC confirmed that the disturbance and rehabilitation areas would be provided in the Annual Review.

Meeting 43 Action – Include a slide in the Annual Review presentation on rehabilitation.

BS questioned when the Underground operation would start extraction. GC confirmed that extraction commenced with the start of the longwall with ongoing commissioning.

BS questioned when the Underground would be fully operational. GC confirmed early 2018.

BS questioned whether additional trains associated with the proposed Modification would occur immediately following approval. GC advised the ramp up in train numbers would be progressive.

JI asked what was the current water make and take in Underground One and what month groundwater increased to 65L/s advised in the June CCC meeting. GC advised the increase was experienced progressively and the volumes would be reported in the Annual Review.

Jl questioned the groundwater model inputs. GC advised that MCO completes a groundwater model, monitors groundwater levels, reviews the model, and re-validates the model.

BS questioned the connection between Open Cut 1 void and the Underground 1 water. GC confirmed that the water from Open Cut 1 void moves through to the Underground operation; and that water transfer to and from the location.

Jl expressed her concerns regarding the MCO Groundwater Model including assumptions made and differences with Ulan's model.

An update was provided on the Open Cut Optimisation Modification.

BS noted that the CCC was not advised of the Modification lodgement and request that the CCC be advised in future. GC explained that DP&E provided a list of stakeholders which the Modification must be provided to, which did not include the CCC and apologised for the oversight. GC committed to notifying the CCC of Modification lodgement dates in future.

Meeting 43 Action 2 – Advise CCC Chairperson once MCO receives notification from DP&E that a Modification has been referred to the independent Planning Assessment Commission (PAC).

BS questioned how the haul road between Open Cut 2 and 3 would interact with Moolarben Creek. GC advised that the Creek would run under the haul road through culverts.

BS questioned whether MCO water is currently treated. GC advised that it is not and that MCO has not released water offsite in recent years.

GC advised that rehabilitation in OC2 is proposed to change from a final land use of agriculture, to a final land use of native forest/woodland with the Modification. BS questioned whether MCO intends to use the rehabilitation as offsets. GC advised that the majority of offset requirements are met by the Gilgal property and residual offsets requirements may be met alternative offset mechanisms which may include rehabilitation. BS questioned why the final land use had changed. GC advised that the change had come about following discussions with the Department of Resources and Geosciences in order to improve the final land use outcome.

Jl questioned whether a void would remain in Open Cut 3. GC advised that the modification did not include any change to the final void.

6. General Business

BS noted that the CCC would appreciate a copy of the Spring Newsletter and would appreciate a copy of future Newsletters.

A hardcopy of the Spring 2017 Newsletter was subsequently provided to all members of the CCC.

DS raised a community concern that trees were being planted in proximity to Ulan-Cassilis Road on the Bobadeen property and whether the trees could be planted greater than 500m from the road to discourage Kangaroos from crossing the Ulan Road. GC advised that the majority of the property includes regeneration for biodiversity offset purposes and that this would be consistent with Ulan road immediately to the south which has vegetation adjacent to road on both sides.

Meeting 43 Action 3 – GC to provide map of offset areas to LA.

Jl inquired about the Spring and Seeps survey referred to in the 2016 Annual Review and for CCC to be provided with the report. GC confirmed the Springs and Seeps report would be provided in the 2017 Annual Review. Jl noted she believed that the original Springs and Seeps studies did not identify all springs and seeps and GDEs in the area, including in Munghorn Gap near Open Cut 3.

Jl referred to her surface water complaint lodged to MCO and UCML and the source of surface water turbidity flowing under Ulan road following recent rainfall, and commented there was a significant delay of up to 20 hours between the rain event and turbidity in the Goulburn River. GC noted that some exposed areas were present near the old airstrip and that the paddocks had been heavily grazed by kangaroos recently during the dry winter.

Jl asked whether MCO tested mine water for organic pollutants such as TPH, BTEX and phenols which are reported to be present in Permian Coal Measures.

Jl advised that Google Maps directs visitors to Goulburn River Stone Cottages through Moolarben Coal private property and requested the MCO also contact Google Maps to rectify the map error which places the public at risk.

7. Proposed 2018 CCC Meetings

The following dates were proposed for the 2018 CCC meetings, commencing at 4pm.

- Tuesday 13 March;
- Tuesday 12 June;
- Tuesday 11 September; and
- Tuesday 27 November

8. Next Meeting: 13th March 2017 – 4:00pm.

Meeting closed at 5:05pm with LA thanking all CCC members for their contribution and commitment throughout 2017. She wished all members a happy festive season and safe new year.

Action Items

Item	Action	By Whom
1	Include a slide in the Annual Review presentation on rehabilitation	GC
2	Advise CCC Chairperson when modification is referred to PAC	GC
3	Map of offset area to be distributed to CCC members	GC/LA
4	Moolarben Coal to contact Google Maps to support Jl's representations regarding incorrect road directions (passing through Moolarben mine site)	GC/Jl

Community Consultative Committee Update

December 2017



Community Support Program

- \$1 Million Milestone Reached!
- Donations spanning 7 years and over 200 local organisations to support local sporting, educational, cultural and environmental projects in the Mid-Western region.
- 31 community organisations have been granted over \$80,000 for local initiatives and projects in 2017 alone.

Community Support Update

Mid-Western Dance Festival



Hargraves-Triamble Pony Club



M3 Maths Challenge



Spring 2017 Newsletter

MOOLARBEN NEWS
SPRING 2017



Community Support Program - \$1 million Milestone reached!

The completion of 2017's first round of Community Support funding saw Moolarben Coal reach the milestone of \$1 million donated to local community, sporting, cultural and environmental initiatives.

Since 2010 more than \$1 million has gone a long way, helping a wide array of community organisations and events. The donations have been used to run community events, purchase new technology and equipment, and hold educational days for young people in the Mid-Western Region.

The Community Support Program this year has seen over \$80,000 go to 51 not-for-profit organisations, including the Watershed Landcare Green Day, the purchase of 'SoftPlay' equipment for LifeSkills Plus and water infrastructure for the Gulgong Polocross Club. Moolarben Coal General Manager Steve Archinal said "It's wonderful to be able to help build a stronger community through the support of such a diverse range of organisations".

For more information on the Community Support Program, please visit www.moolarbencoal.com.au.

Planning and Approvals Update

Moolarben Coal continually strives to improve, and has identified opportunities to optimise its operations. To realise these improvement opportunities Moolarben Coal will be seeking approval from the NSW Department of Planning & Environment and Federal Department of the Environment and Energy to modify its Project Approval.

- The proposed Modification involves:
- Minor extensions to disturbance limits to facilitate safe and efficient mining.
 - Removal of OC3 permanent out-of-pit emplacement from the final landform and re-equipping of some approved disturbance areas.
 - Increased peak open cut production, coal loading and rilling.
 - Installation of water treatment facilities and associated increase in rate of controlled releases.
 - Site infrastructure refinements, such as conveyors and haul road locations.

An environmental assessment is being prepared to support the Modification, which will describe existing environmental baseline data, potential impacts of the Modification when compared to the approved operations, and assistance monitoring, rehabilitation and management measures. This environmental assessment will be supported by specialist studies, including biodiversity, heritage, noise, air quality, and water. The environmental assessment will be lodged with the Department of Planning and Environment in Quarter 4, 2017.

Moolarben Coal's existing licences and approvals are available at www.moolarbencoal.com.au. Comments are welcome and can be provided via feedback@moolarbencoal.com.au.



Message from the General Manager

Welcome to the Spring 2017 edition of the Moolarben Community Newsletter.

I'm delighted to announce that since our last edition, our Community Support Program has ticked over the \$1 million mark. Since 2010 we have helped over 240 local initiatives in a range of areas including environment, sport, education and safety. Reaching the \$1 million is a significant milestone demonstrating Moolarben's on-going role in the local community.

The Moolarben Underground Operation is continuing towards the commencement of the Longwall, with numerous pieces of equipment arriving on site over the past few months. It is exciting to see many months of planning starting to take shape, and I commend all involved. We are also progressing well with the onboarding and training of our permanent underground workforce and it's great to have so many new faces on site.

All the best,
Steve Archinal

Finally, I would like to congratulate all those who participated in the recent Mudgee Running Festival and congratulate the fantastic efforts of the organising committee. It was pleasing to see such strong community support for the event this year, and even better to bring home the Coal Miners Cup for Moolarben and the Benevolent Society. Well done to all.



Phone: 02 6376 1500
Email: feedback@yancoal.com.au
Web: www.moolarbencoal.com.au

Moolarben brings home the Coal Miners Cup

On Sunday 20th August, over 800 people participated in the annual Mudgee Running Festival, competing across a range of events including a full marathon, half marathon, 10km and 5km fun run.

For the second year in a row, Moolarben Coal, Wilpinyong Coal and Ulan Coal battled it out for the Coal Miners Cup in support of local charities including the Benevolent Society, Riding for the Disabled and Little Wings. The friendly competition sees each mine support a local charity with the team that accumulates the most kilometres throughout the festival taking home the Coal Miners Cup. With more than 40 employees and families running over 350km for the Moolarben team, we managed to bring home the Cup, ahead of last year's winner Wilpinyong Coal.

Moolarben's victory saw \$1,500 donated to the Benevolent Society. The Benevolent Society conducts Personal Helpers and Mentor programs to help people with mental illness regain their independence as well as Brighter Futures programs to support families experiencing issues like domestic violence, mental health or difficult child behaviour.

The Running Festival also saw Moolarben continue their association with the Clontarf Foundation, with several young men from Clontarf joining the Moolarben team.

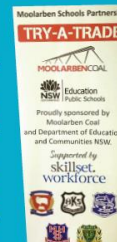


Try A Trade

In May, Moolarben Coal teamed up with the Department of Education, Communities NSW and Skillset to sponsor the Try-A-Trade fair at Mudgee High School.

The Try-A-Trade fair was attended by local high school students who were given the opportunity to get a feel for a wide range of trades and professions. At the fair, students rotated through various trades, talking to people working in fields that interest them. There was a wide range of games on display this year, with students able to try their hand at everything from butchery, hairdressing and floristry to electrical and mechanical engineering.

In collaboration with Skillset, Moolarben Coal apprentices were at the fair, speaking with students and giving them first hand insight into working in the mining industry.



Drone seeding trials underway in Rehabilitation areas

Approximately 27ha of rehabilitation was completed in the first half of 2017 within the Moolarben Coal Complex. Areas within the Open Cut 1 and Open Cut 4 region of the complex were targeted with further works planned in Open Cut 2 for later in the year.

All areas completed during this campaign were seeded with Sedimentary Inonback Forest species, with seed collected from the local area. As part of our recent rehabilitation campaign, areas within Open Cut 1 and

Open Cut 4 had sections seeded using drones to assist in creating stands of Allocasuarina, a food tree for the Glossy Black-Cockatoo. Suitable locations for Allocasuarina stands were defined within the final landform. These areas were then programmed into the purpose-built drone for seeding. The use of this highly innovative and industry leading technology will assist Moolarben in meeting our commitments to mine site rehabilitation.



The use of this highly innovative and industry leading technology will assist Moolarben in meeting our commitments to mine site rehabilitation.

Underground Longwall update

The construction of the new underground Longwall machine is well underway at Moolarben. Over the past few months, various components of the Longwall have been delivered to site and installed underground, and testing and commissioning of this equipment is now in progress. Our crews have been busily training and preparing for longwall commencement.



Scott Fitter Community Relations Coordinator
Phone: 02 6376 1500 or email scott.fitter@yancoal.com.au

MOOLARBEN COAL
PART OF THE YANCOAL AUSTRALIA GROUP

Moolarben Mine Rescue Station Update

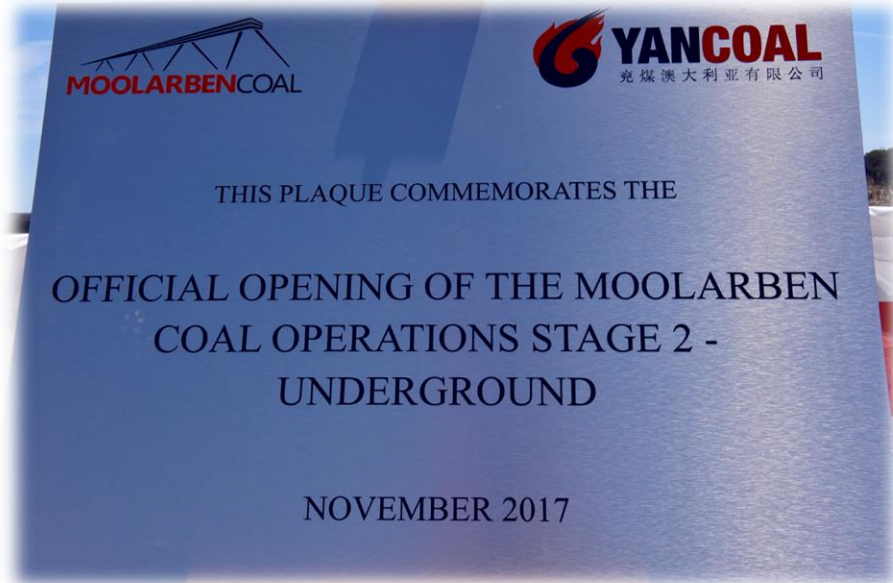
- Moolarben Mines Rescue Station officially opened on 1st December
- Coal Services Western Region First Aid competition
 - 9 teams from 5 operations.
 - Congratulations to the winning Ulan Underground Team



Underground Opening

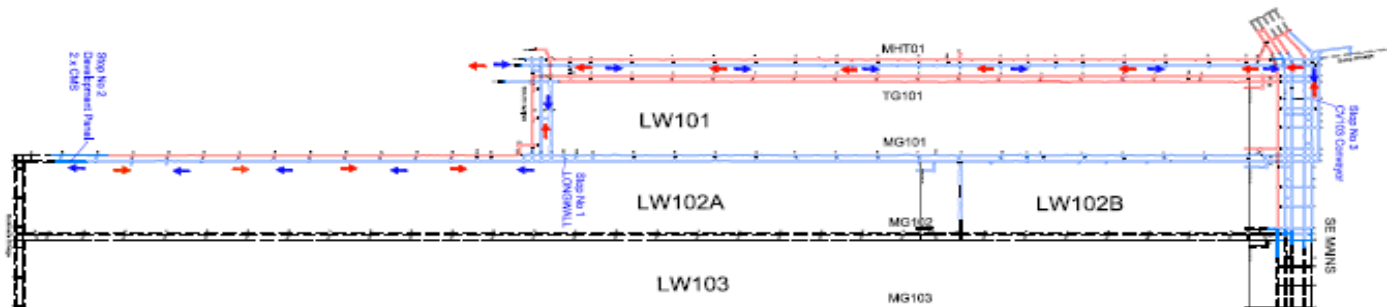
■ Opening

- Delegation attended from Caterpillar, Downer, Yankuang, Yanzhou and Yancoal



Operational Update

- Open Cut operations in OC2 and OC4.
- Landform shaping OC2 and OC4.
- UG1 development continues
- Longwall commenced in October
- Northern Borefield – Drilling complete. Pipe/electrical works in progress.



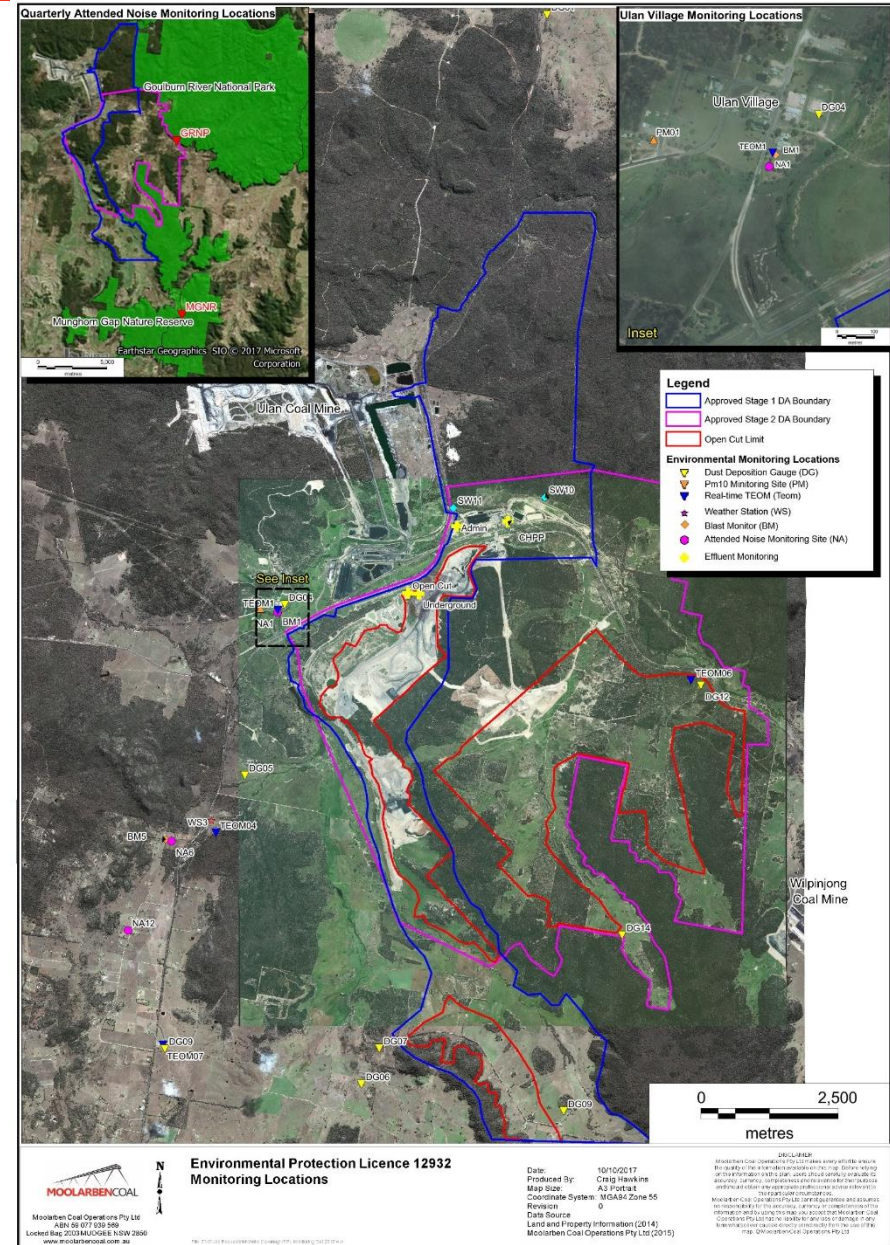
Drilling Update

- Drilling program undertaken in UG4 and OC4.
- Exploration program in progress in EL6288 south areas.
- Rehabilitation and monitoring activities have continued during the period.

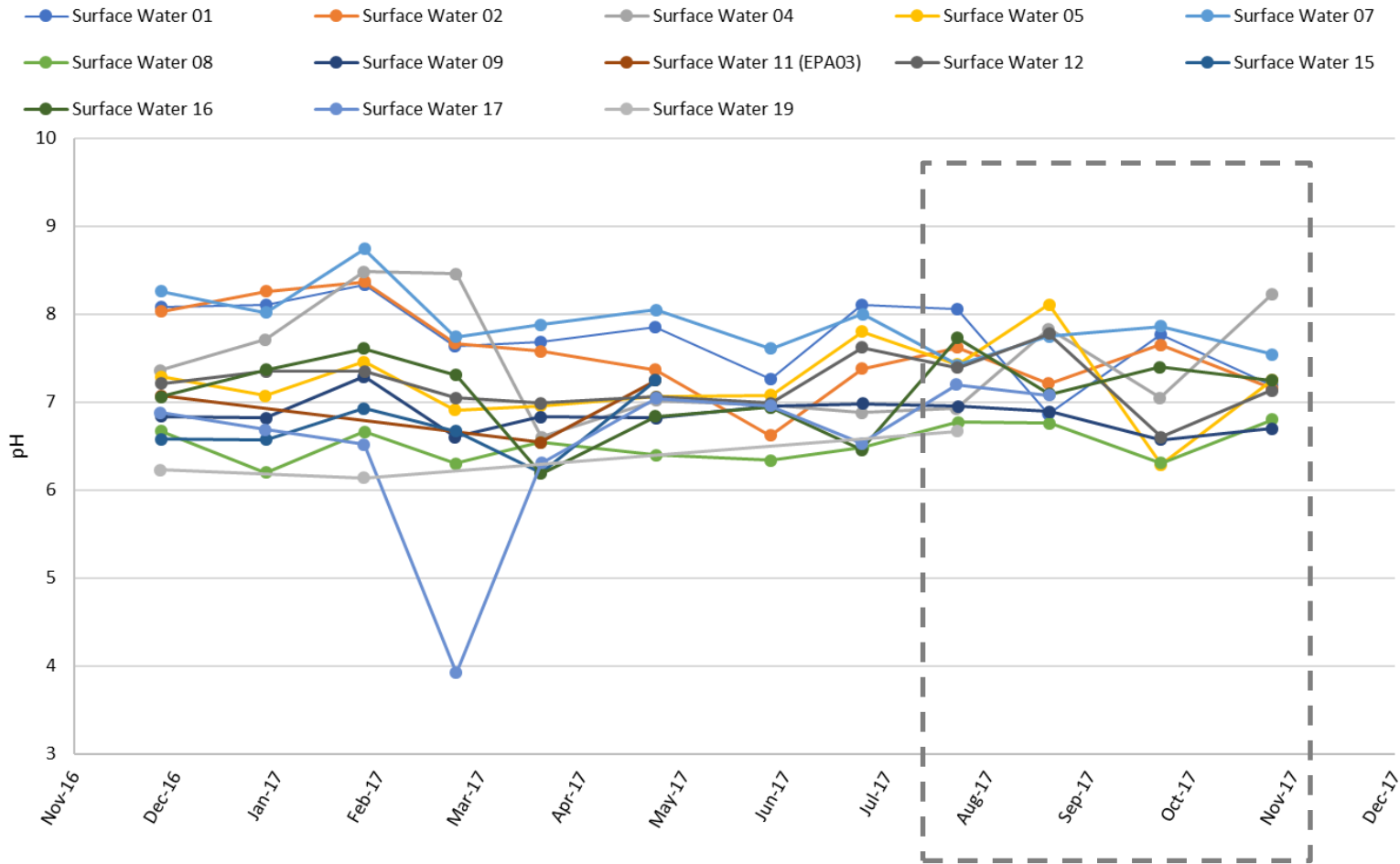


Environmental Monitoring

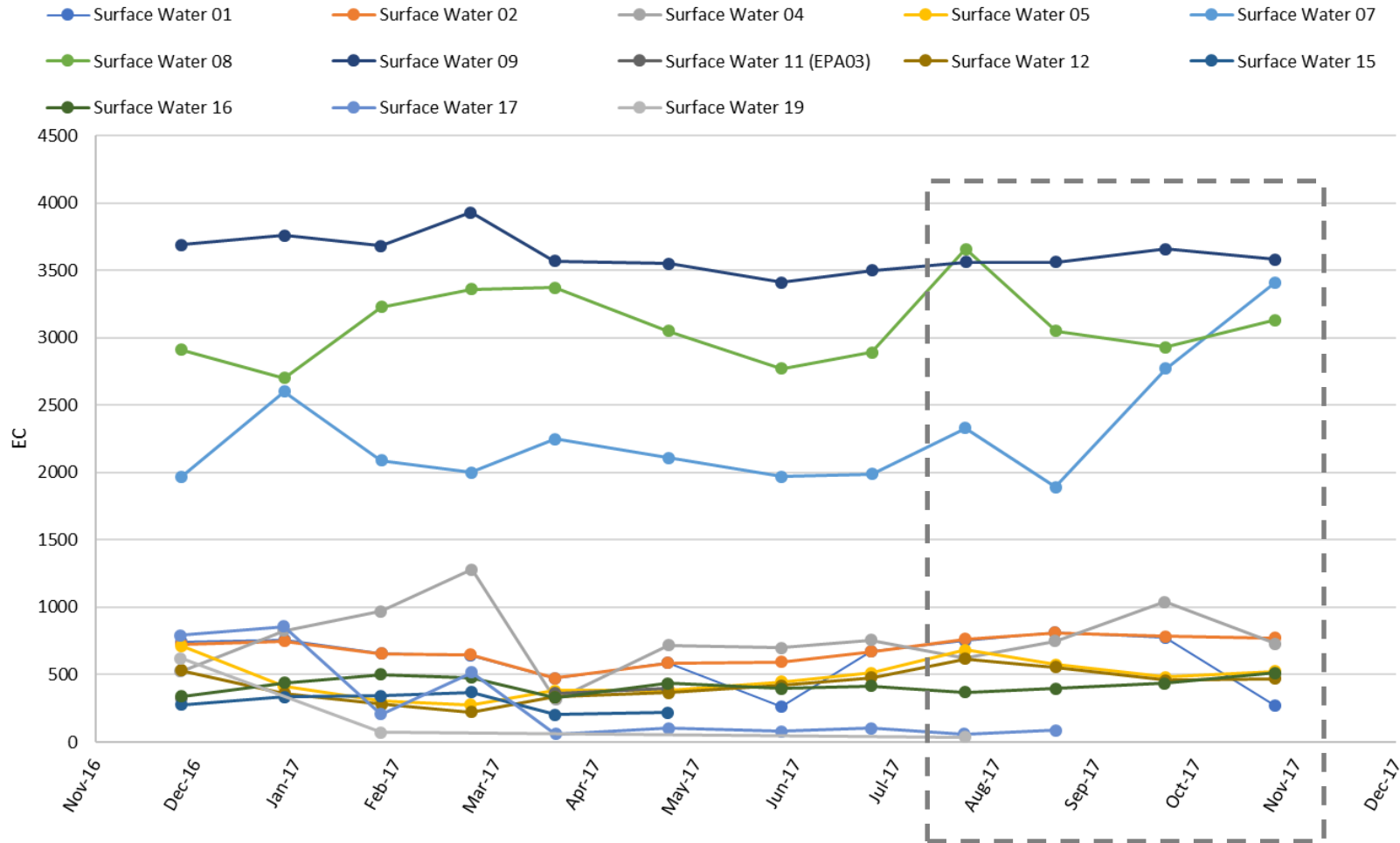
- Monitoring network
 - Water;
 - Air Quality;
 - Blasting;
 - Noise;
 - Meteorology.



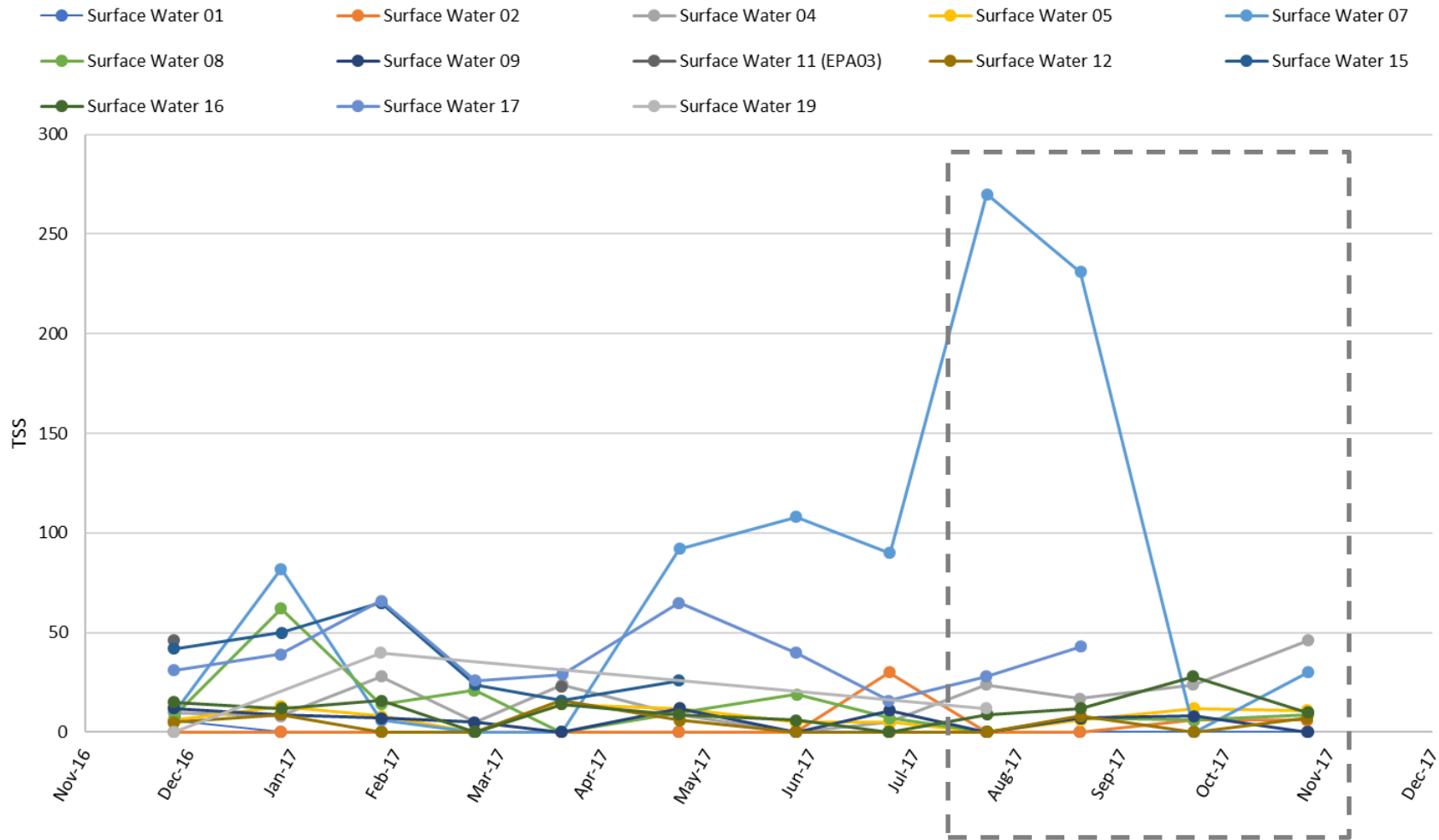
Water Quality - pH



Water Quality - EC



Water Quality - TSS



Air Quality

Site	November 2016 PM10 Annual Average ($\mu\text{g}/\text{m}^3$)	November 2017 PM10 Annual Average ($\mu\text{g}/\text{m}^3$)	Air Quality PM10 Annual Average Criteria ($\mu\text{g}/\text{m}^3$)
Ulan School	13.5	12.5	30.0
Ulan Road	-	11.3*	30.0
Ulan-Wollar Rd	11.1	12.7	30.0

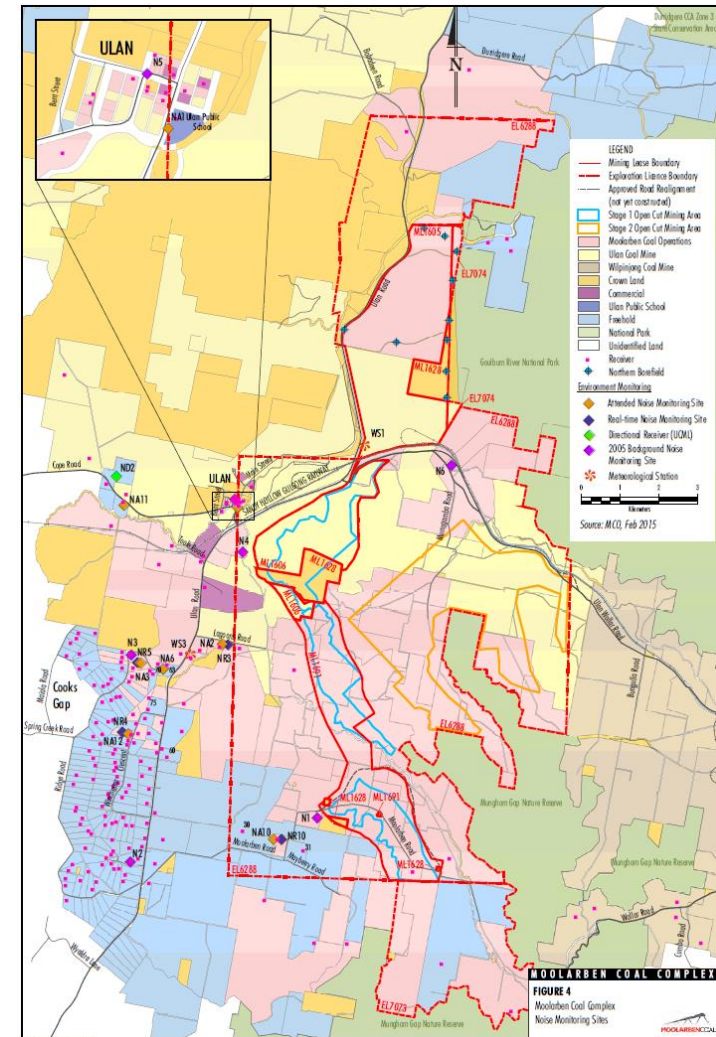
*Relocated site. Average since establishment

Monthly monitoring reports are available on our website:

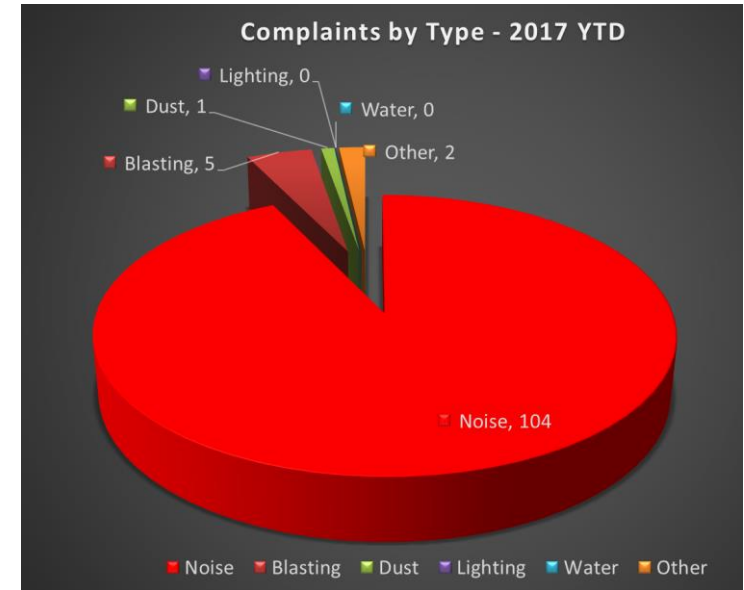
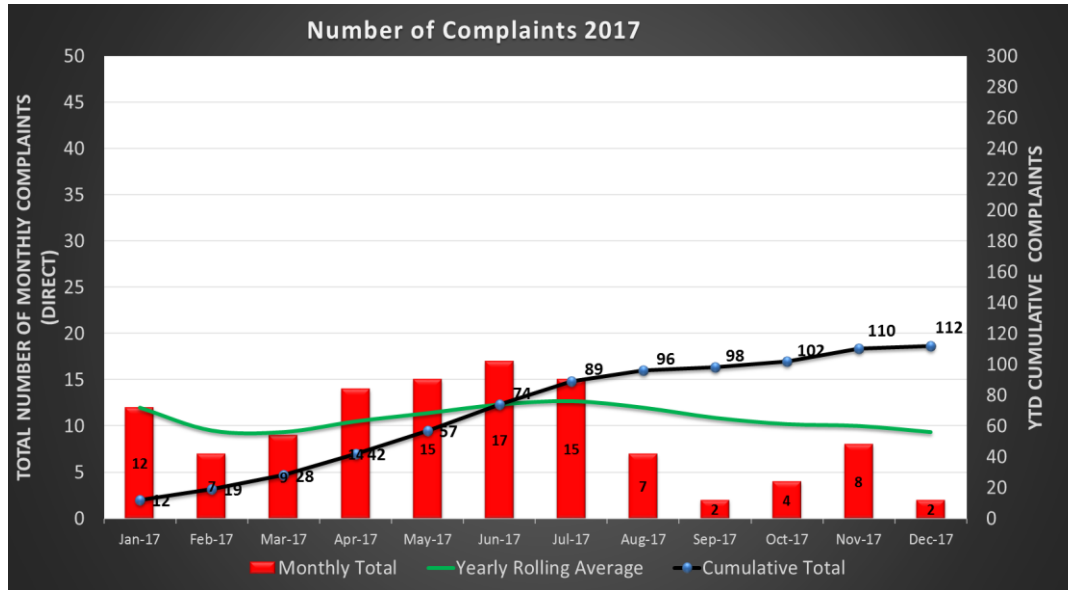
www.moolarbencoal.com.au/environment-and-community/monitoring-results/

Noise Monitoring

- All monthly & quarterly attended noise monitoring within criteria.
- NR10 Real-time noise unit installed (Moolarben Road).
- Continued implementation of:
 - Planning controls - scheduling
 - Engineering controls - attenuation
 - Operational controls - bunds/screens
 - Real-time monitoring triggers
 - Real-time response protocols



Community Complaints



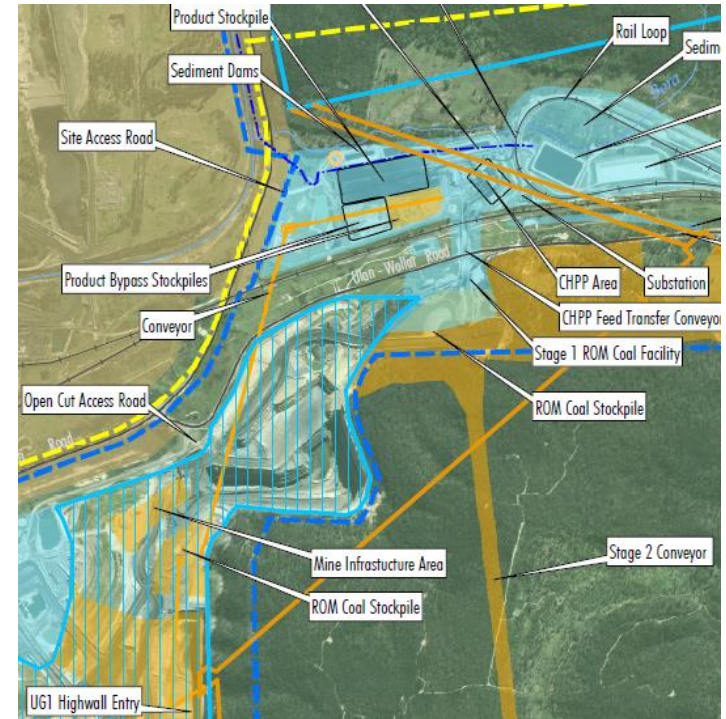
Rehabilitation Update

- Approximately 70ha of rehabilitation has been undertaken at the MCC during 2017
- 30 ha is currently being topsoiled for seeding
- A further 20ha is being shaped to final landform for topsoiling and seeding in the first half of 2018



UG Project Update

- Longwall commenced in October. Commissioning continues.
- Fan commissioning complete.
- Material handling system commissioning from Oct to Dec 17.
- Progressive demobilisation of people and equipment and close out of areas.
- Rehabilitation close out continues.



Employment Update

Traineeships

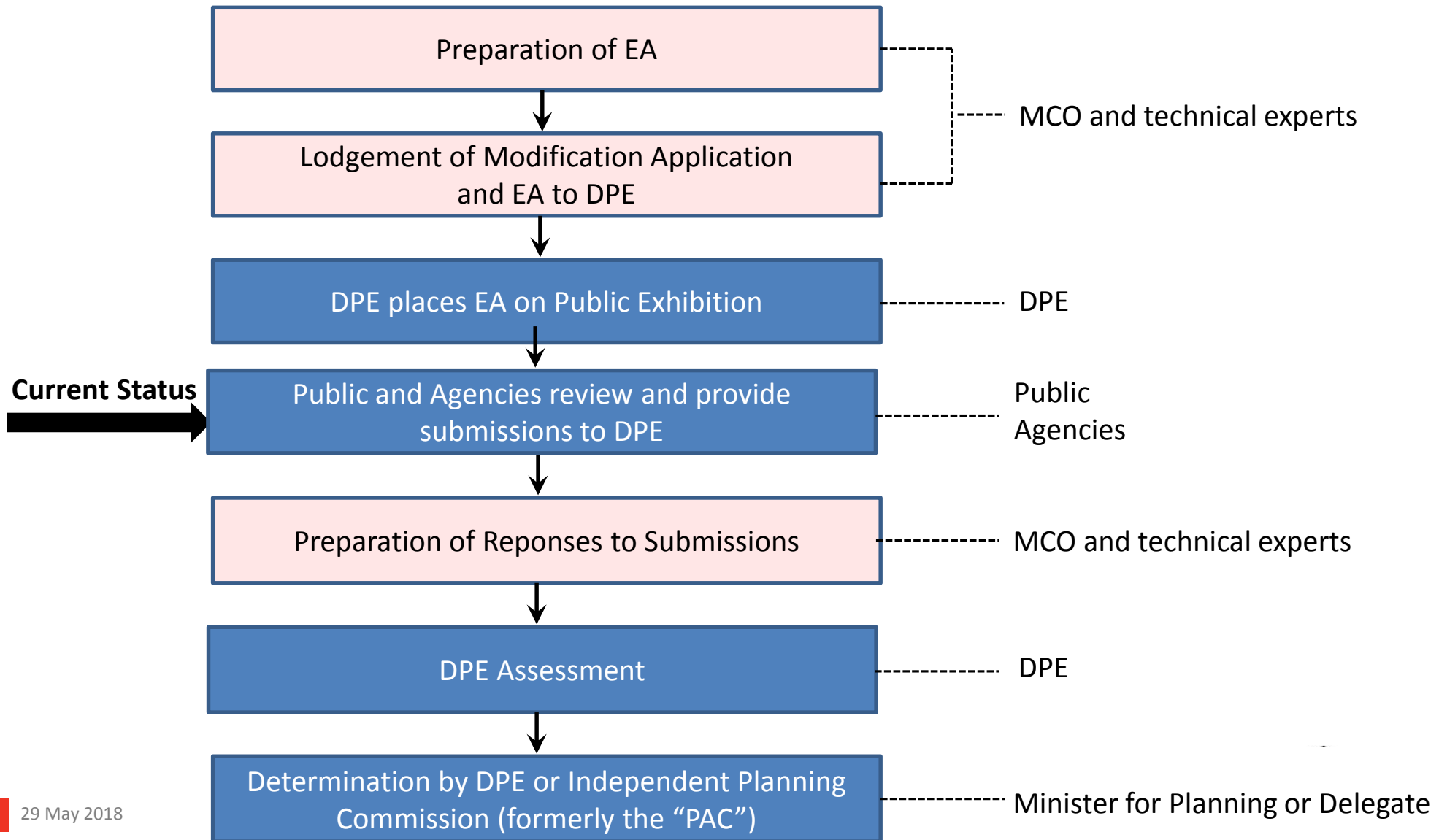
- Currently 10 Underground and 7 Open Cut
- Next round January
 - Underground x 5
 - Open Cut x 8

Apprentices

- Currently 4 Underground and 15 Open Cut
- Next round January 2018
 - Underground x 2
 - Open Cut x 4
- Underground and Open Cut recruitment on-going.



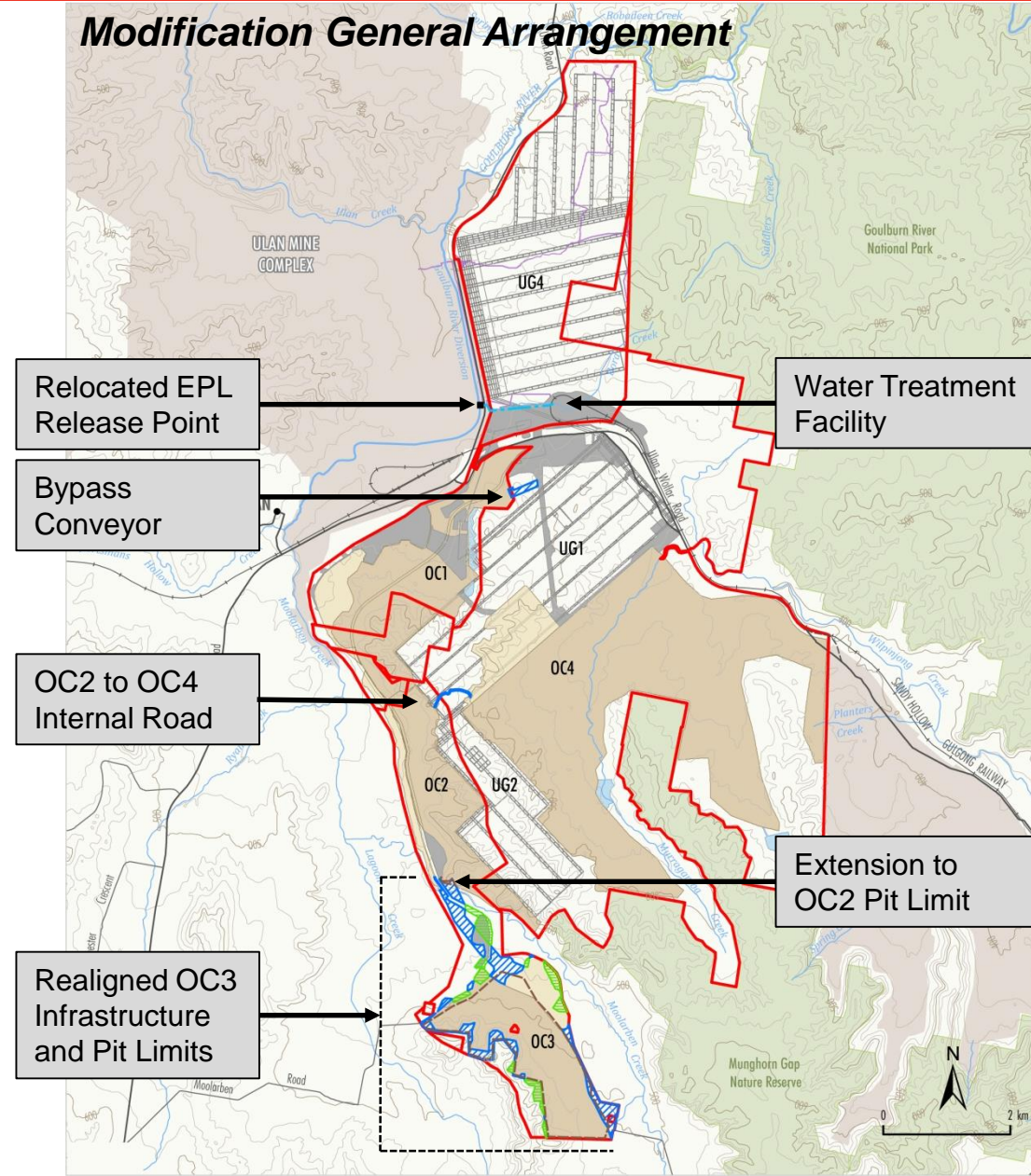
Open Cut Optimisation Modification Update Assessment Process Overview



Modification Description Overview

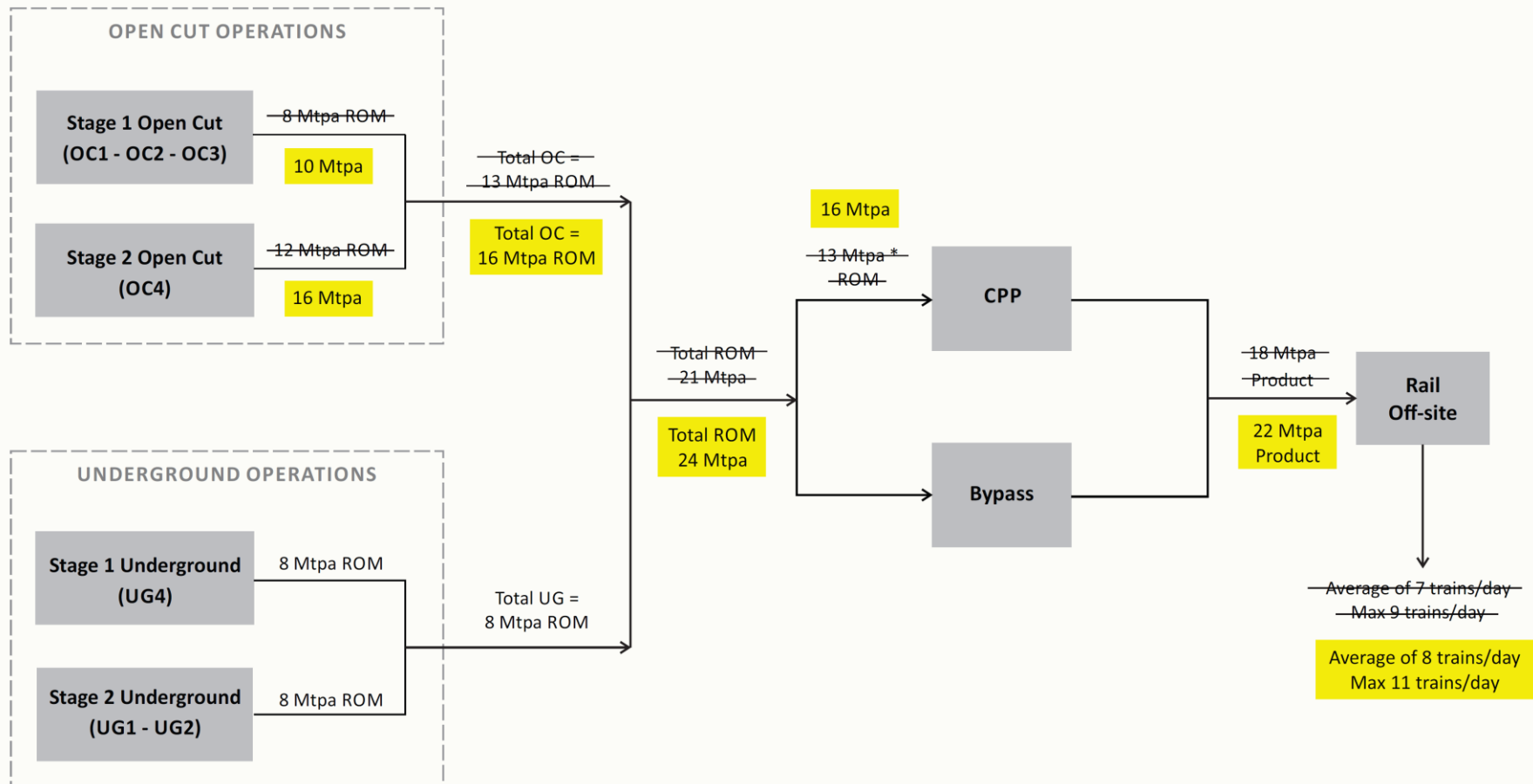
Proposed modifications:

- Open cut production limits
- OC3 infrastructure and OC3/OC2 pit limits
- OC2 to OC4 internal road
- Bypass conveyor
- Water treatment facilities and relocated EPL release point
- Final landuse in OC2 and OC3 (proposed change to native vegetation from agricultural grazing land)
- Other minor infrastructure changes within extent of approved disturbance



Modification Description

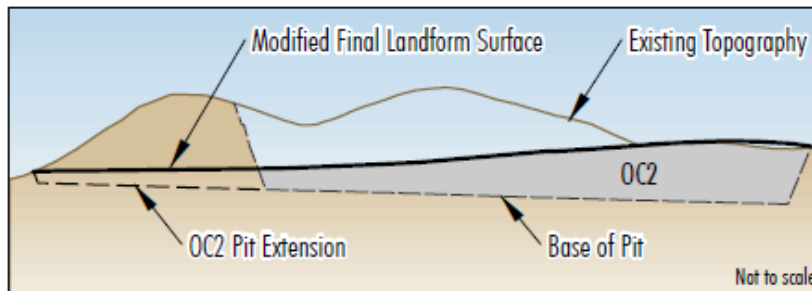
Increased Open Cut Product Limits



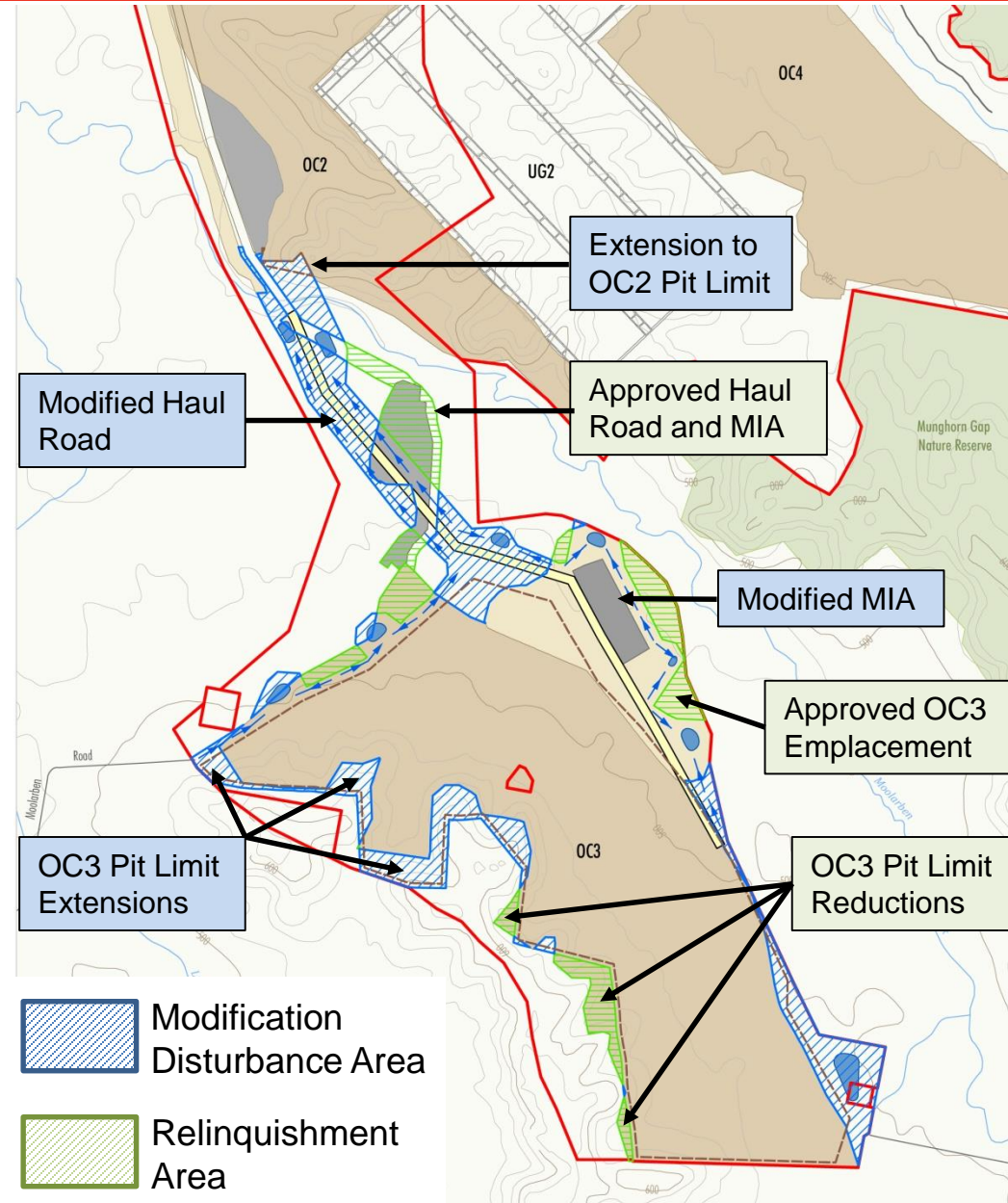
Modification Description

OC3 Infrastructure and OC2/OC3 Pit Limits

- Realigned OC2 to OC3 haul road
- Relinquishment of approved disturbance and OC3 out of pit emplacement
- Relocated OC3 MIA
- OC3 revised pit limits
- OC2 revised pit limit



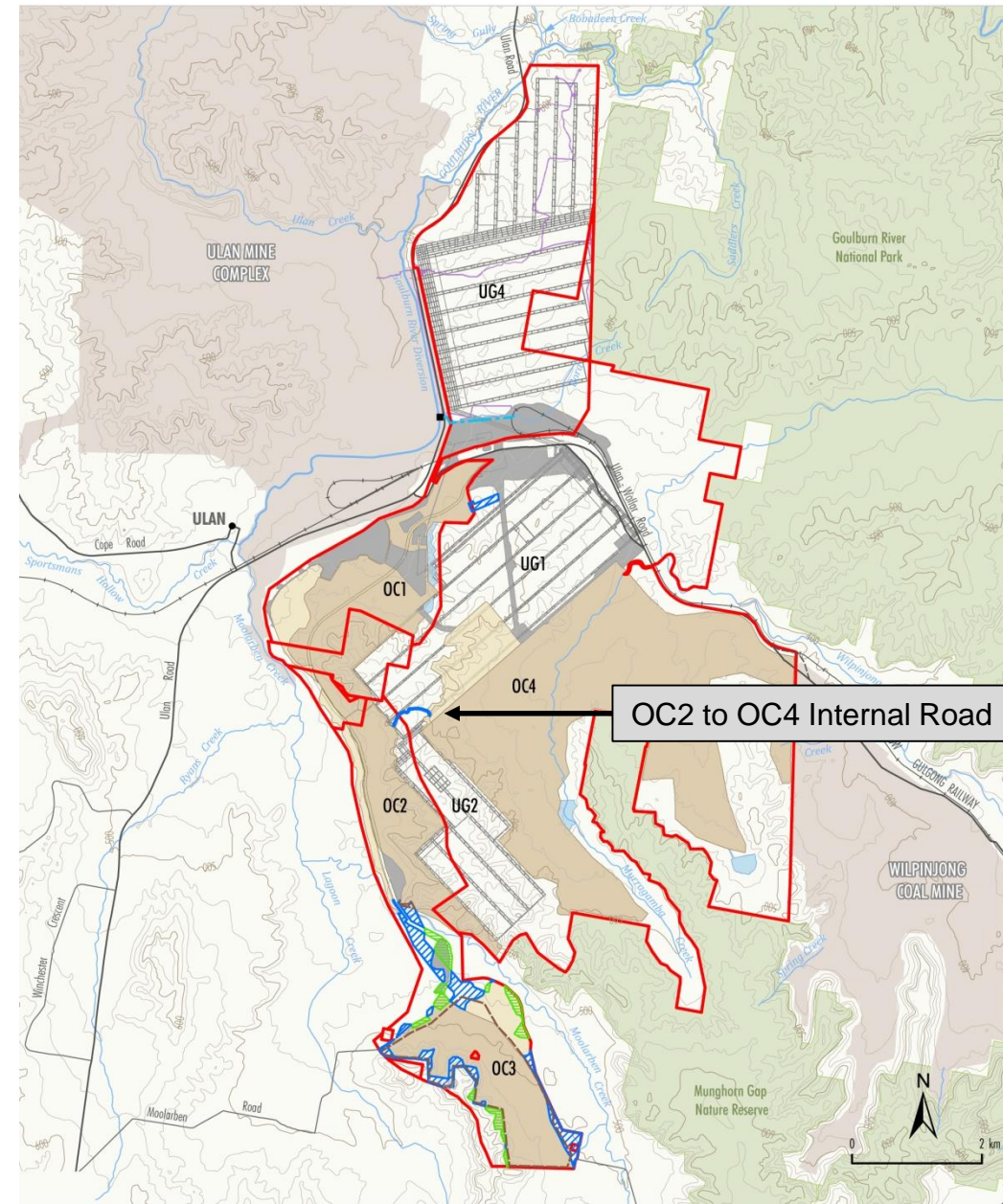
Extension to OC2 Pit Limit



Modification Description

OC2 to OC4 Internal Road

- Movement of mining equipment
- Alignment follows existing track
- No haulage of waste rock or coal



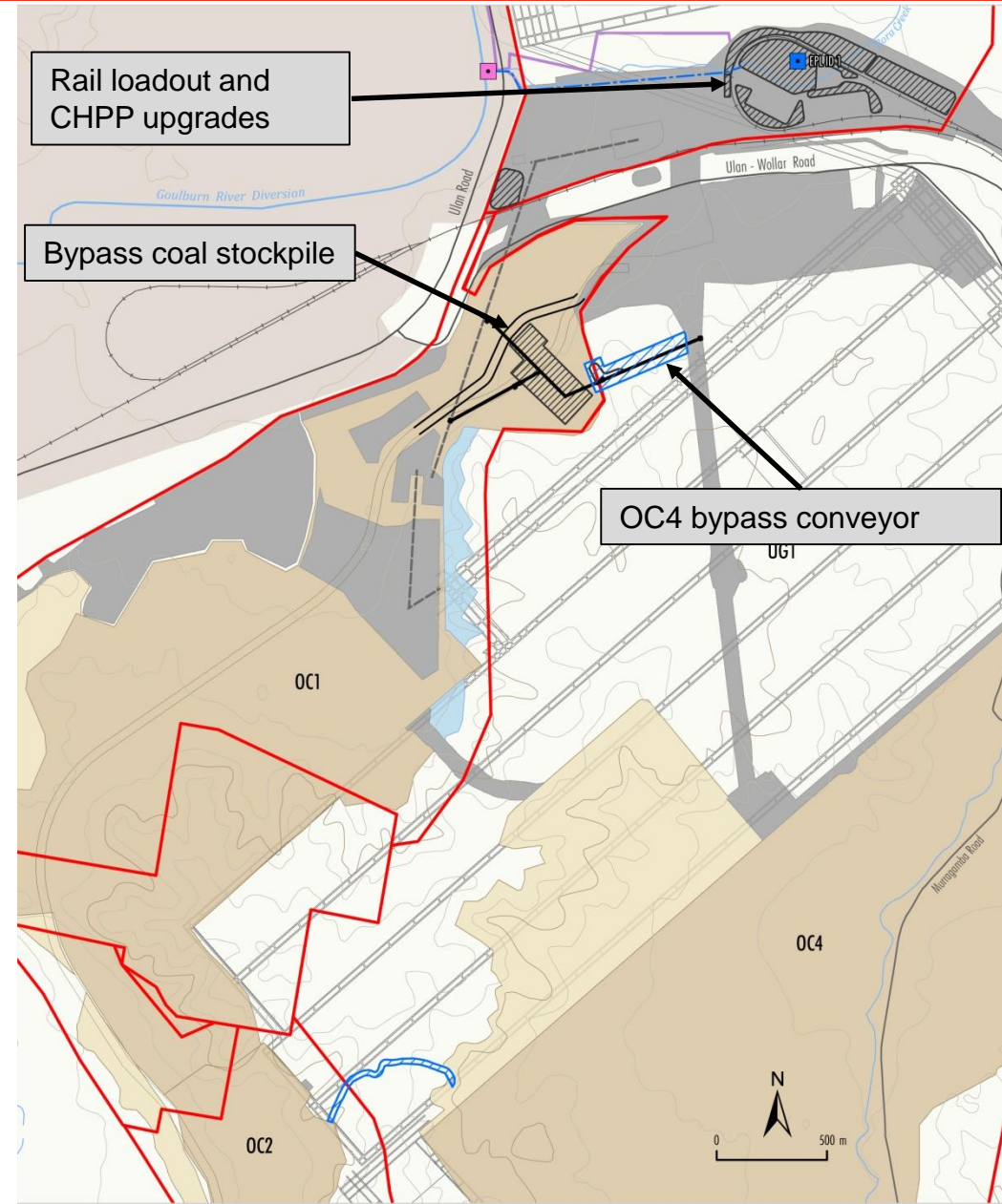
Modification Description

Bypass Conveyor

- Open cut ROM coal currently washed at CHPP
- Bypass conveyor allows open cut ROM coal of suitable quality to bypass CHPP
- Increased yield and reduced reject material

Other infrastructure within Approved Disturbance

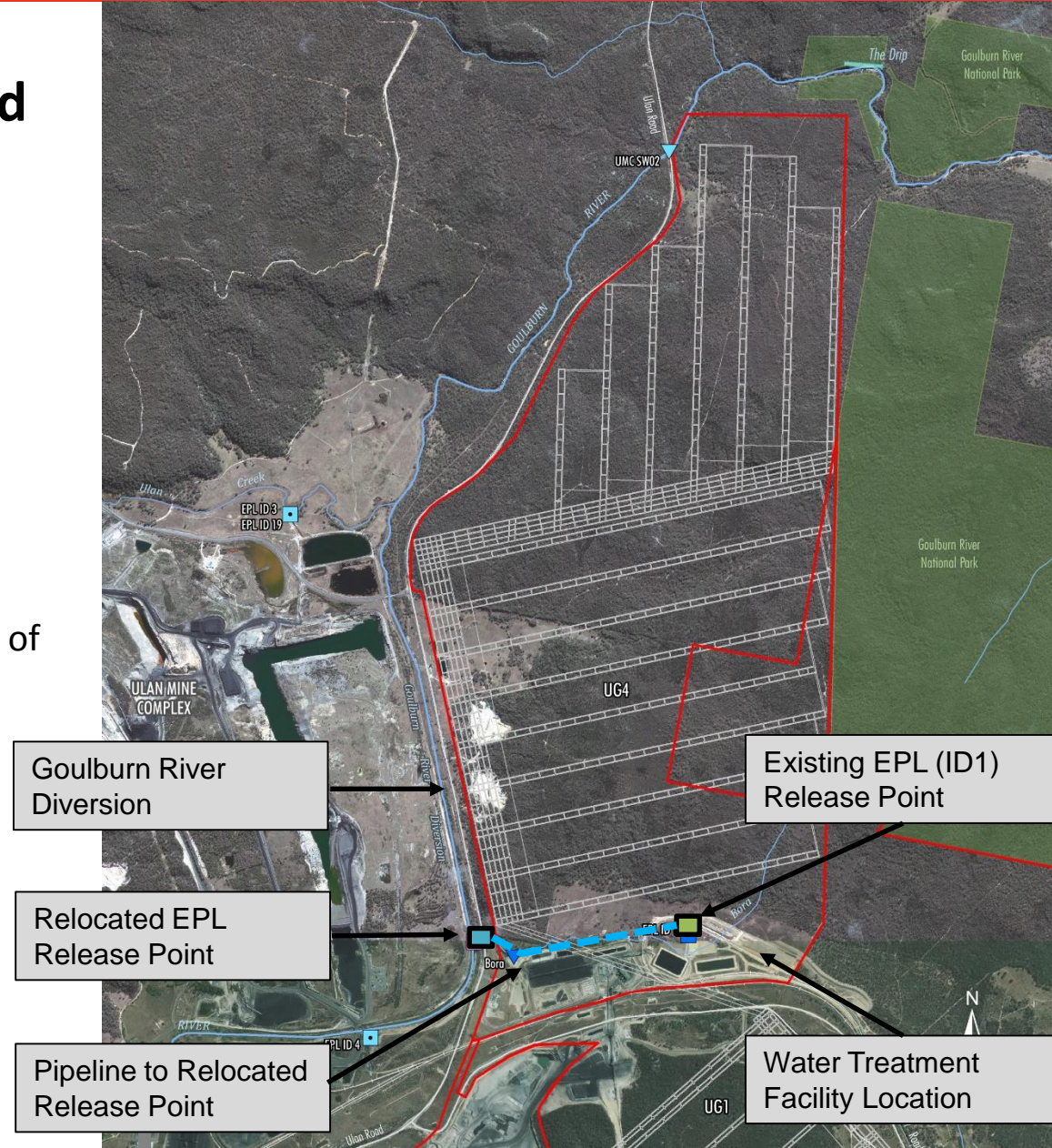
- CHPP upgrades
- Stockpiles
- Rail loadout infrastructure



Modification Description

Water Treatment Facilities and Relocated EPL Release Point

- EPL 12932 authorises 10 ML/day release
- Proposed increase to 20 ML/day
- Water treatment facility to be located at CHPP (pre-treatment, RO plant, dams)
- Treatment to EPL release water quality criteria
- Relocated EPL release point at confluence of Bora Creek and Goulburn River Diversion
- Piping to relocated release point to avoid Bora Creek



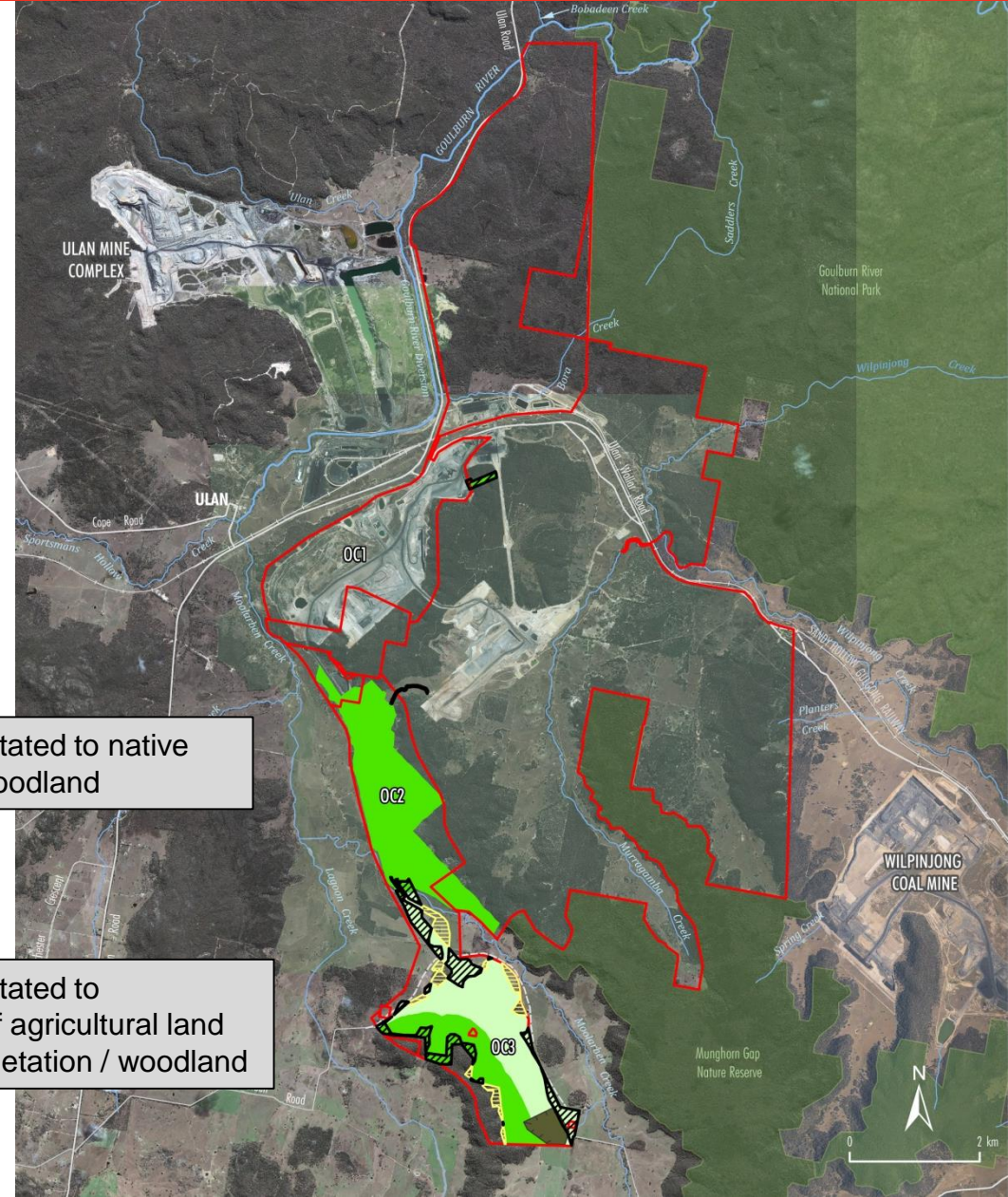
Modification Description

Final Landuse in OC2/OC3

- Rehabilitation of OC2 and portions of OC3 to native vegetation / woodland (rather than agricultural grazing land)
- OC3 out of pit emplacement no longer required in final landform

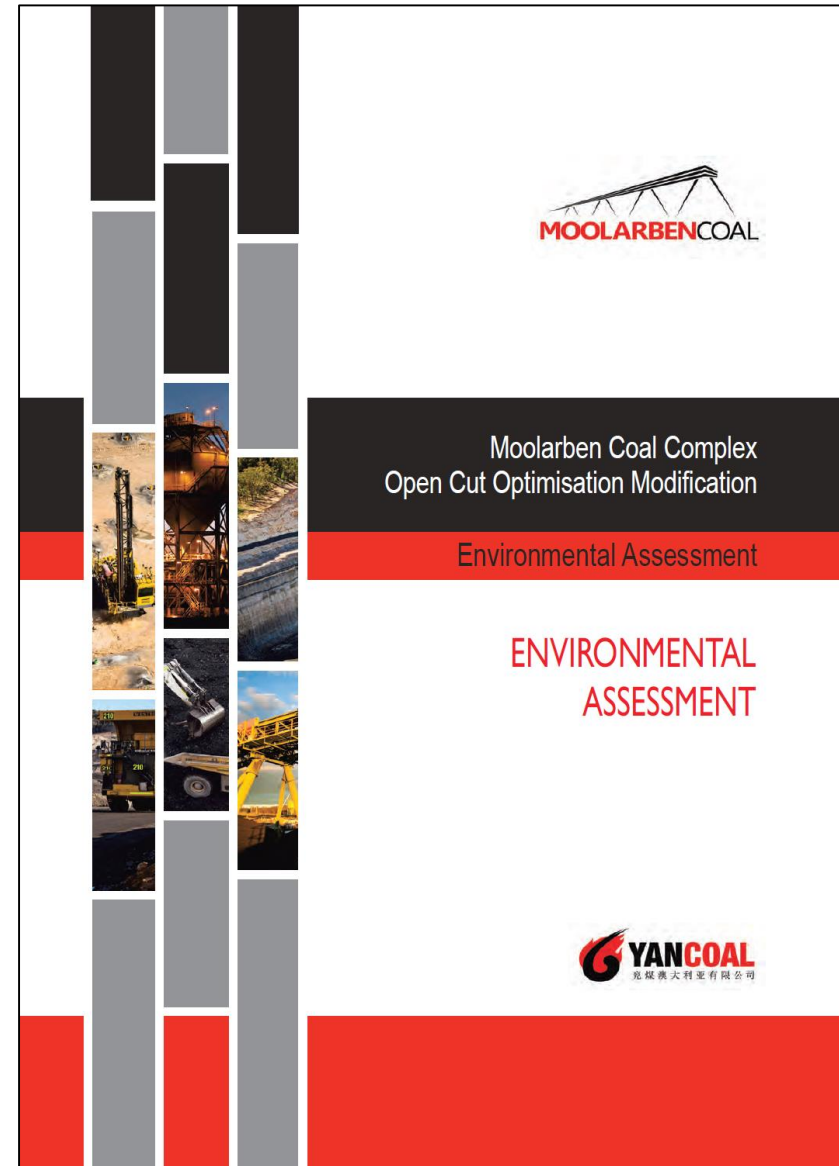
OC2 – rehabilitated to native vegetation / woodland

OC3 – rehabilitated to combination of agricultural land and native vegetation / woodland



Environmental Assessment

- Appendix A – Noise Assessment
(*SLR Consulting*)
- Appendix B – Air Quality Assessment
(*Todoroski Air Sciences*)
- Appendix C – BARBOS
(*EcoLogical Australia*)
- Appendix D – ACHA
(*Niche Environment and Heritage*)
- Appendix E – SWB and Surface Water Assessment
(*WRM Water & Environment*)
- Appendix F – Controlled Water Release Impact Assessment
(*Advisian*)
- Appendix G – Aquatic Ecology Assessment
(*Marine Pollution Research*)
- Appendix H – Geochemistry Review
(*RGS Environmental*)
- Appendix I – Groundwater Assessment
(*HydroSimulations*)



Merry Christmas

THANK YOU FOR YOUR INVOLVEMENT IN
THE CCC FOR 2017.

ON BEHALF OF MOOLARBEN WE WISH YOU
AND YOUR FAMILIES A MERRY CHRISTMAS
AND HAPPY NEW YEAR

