



# Mount Thorley Warkworth EPL Monitoring Data

Published 30 July 2024  
FOR THE MONTH ENDING 30 June 2024

<b>Name of Operation</b>	<b>Mount Thorley Coal Loader</b>
Environment Protection Licence	24
Licensee	Mount Thorley Coal Loading Ltd
Premises	Mount Thorley Coal Loading Ltd Mount Thorley Road, Mount Thorley Via Singleton NSW 2330
EPL Link	<a href="http://app.epa.nsw.gov.au/prpoeoapp/ViewPOEOLicence.aspx?DOCID=89660&amp;SYSUID=1&amp;LICID=24">http://app.epa.nsw.gov.au/prpoeoapp/ViewPOEOLicence.aspx?DOCID=89660&amp;SYSUID=1&amp;LICID=24</a>
<b>Name of Operation</b>	<b>Mount Thorley Operations</b>
Environment Protection Licence	1976
Licensee	Mount Thorley Operations Pty Limited
Premises	Mount Thorley Operations Mount Thorley Road Mount Thorley NSW 2330
EPL Link	<a href="https://apps.epa.nsw.gov.au/prpoeoapp/ViewPOEOLicence.aspx?DOCID=161559&amp;SYSUID=1&amp;LICID=1976">https://apps.epa.nsw.gov.au/prpoeoapp/ViewPOEOLicence.aspx?DOCID=161559&amp;SYSUID=1&amp;LICID=1976</a>
<b>Name of Operation</b>	<b>Warkworth Coal Mine</b>
Environment Protection Licence	1376
Licensee	Warkworth Mining Ltd
Premises	Warkworth Coal Mine Putty Road Mount Thorley NSW 2330
EPL Link	<a href="https://apps.epa.nsw.gov.au/prpoeoapp/ViewPOEOLicence.aspx?DOCID=160262&amp;SYSUID=1&amp;LICID=1376">https://apps.epa.nsw.gov.au/prpoeoapp/ViewPOEOLicence.aspx?DOCID=160262&amp;SYSUID=1&amp;LICID=1376</a>

## 1 INTRODUCTION

This report provides a summary of environmental monitoring results for Mount Thorley Warkworth (MTW) in accordance with the requirements of the following Environment Protection Licences (EPL):

- EPL24 – Mount Thorley Coal Loader (MTCL);
- EPL1376 – Warkworth Mining Limited (WML); and
- EPL1976 – Mount Thorley Operations (MTO).

This report includes all monitoring data collected in accordance with the above licences for the period 1 to 30 June 2024.

Monitoring in this report includes:

- Air quality monitoring;
- Surface water monitoring including mine water discharge and effluent quality; and
- Blast monitoring.

Monitoring locations are shown in **Figure 1**.

## 2 AIR QUALITY

In accordance with the requirements of Condition M2.2 of WML EPL 1376 and MTO EPL 1976, MTW maintains a network of five PM<sub>10</sub> monitors.

Results of Particulates (PM<sub>10</sub>) monitoring are shown in **Table 1**. Results reported represent the 24hr average PM<sub>10</sub>, derived from 10 minute PM<sub>10</sub> values for the period midnight to midnight, for each calendar date during the reporting period. The last sampling date was 30 June 2024 and the data was obtained on 1 July 2024.

**TABLE 1: PARTICULATE MATTER <10µM MONITORING**

Date	Unit of Measure	Monitoring Frequency & Capture	Monitoring Point				
			Warkworth North (EPA ID # 9 - WML EPL 1376)	MTO Boundary (EPA ID # 13 - MTO EPL 1976)	Dragline Crossing (EPA ID # 10 - WML EPL 1376 & MTO EPL 1976)	Heavy Vehicle Bridge (EPA ID # 11 - WML EPL 1376 & MTO EPL 1976)	MTIE (EPA ID # 12 - WML EPL 1376 & EPA ID #19 - MTO EPL 1976)
01/06/2024 00:00	µg/m <sup>3</sup>	Continuous	#	4.0	6.7	8.8	6.7
02/06/2024 00:00	µg/m <sup>3</sup>		#	#	#	6.3	3.1
03/06/2024 00:00	µg/m <sup>3</sup>		#	#	12.4	#	4.0
04/06/2024 00:00	µg/m <sup>3</sup>		8.1	10.0	15.1	9.9	6.5
05/06/2024 00:00	µg/m <sup>3</sup>		#	13.1	25.4	23.9	16.7
06/06/2024 00:00	µg/m <sup>3</sup>		9.7	10.0	16.2	14.8	8.3
07/06/2024 00:00	µg/m <sup>3</sup>		9.6	10.5	11.4	7.9	7.1
08/06/2024 00:00	µg/m <sup>3</sup>		6.0	8.2	13.4	6.0	4.8
09/06/2024 00:00	µg/m <sup>3</sup>		8.4	11.1	21.9	10.6	7.3
10/06/2024 00:00	µg/m <sup>3</sup>		12.8	13.5	16.5	12.3	6.9
11/06/2024 00:00	µg/m <sup>3</sup>		8.1	8.1	19.1	12.8	9.0
12/06/2024 00:00	µg/m <sup>3</sup>		2.9	2.6	13.7	4.3	2.7
13/06/2024 00:00	µg/m <sup>3</sup>		14.1	2.9	8.0	6.1	7.2
14/06/2024 00:00	µg/m <sup>3</sup>		14.0	3.8	14.5	10.6	8.9
15/06/2024 00:00	µg/m <sup>3</sup>		6.9	3.0	3.8	3.9	2.9
16/06/2024 00:00	µg/m <sup>3</sup>		2.6	1.6	13.1	7.5	3.1
17/06/2024 00:00	µg/m <sup>3</sup>		5.0	6.5	17.2	11.8	5.8
18/06/2024 00:00	µg/m <sup>3</sup>		4.4	10.0	23.7	20.1	13.0
19/06/2024 00:00	µg/m <sup>3</sup>		5.8	22.3	20.7	18.4	7.3
20/06/2024 00:00	µg/m <sup>3</sup>		16.8	9.7	19.0	17.3	12.2
21/06/2024 00:00	µg/m <sup>3</sup>		14.3	6.2	15.9	13.0	8.9
22/06/2024 00:00	µg/m <sup>3</sup>		5.2	5.1	14.6	12.5	7.1
23/06/2024 00:00	µg/m <sup>3</sup>		6.9	2.2	5.1	7.8	3.7

MTW EPL Monitoring Data  
FOR THE MONTH ENDING 30 June 2024

Date	Unit of Measure	Monitoring Frequency & Capture	Monitoring Point				
			Warkworth North (EPA ID # 9 - WML EPL 1376)	MTO Boundary (EPA ID # 13 - MTO EPL 1976)	Dragline Crossing (EPA ID # 10 - WML EPL 1376 & MTO EPL 1976)	Heavy Vehicle Bridge (EPA ID # 11 - WML EPL 1376 & MTO EPL 1976)	MTIE (EPA ID # 12 - WML EPL 1376 & EPA ID #19 - MTO EPL 1976)
24/06/2024 00:00	µg/m <sup>3</sup>		7.8	6.9	12.3	12.6	10.6
25/06/2024 00:00	µg/m <sup>3</sup>		20.4	12.9	20.7	19.3	20.0
26/06/2024 00:00	µg/m <sup>3</sup>		22.8	17.3	27.2	26.8	22.9
27/06/2024 00:00	µg/m <sup>3</sup>		6.6	8.1	22.6	17.2	14.2
28/06/2024 00:00	µg/m <sup>3</sup>		11.7	11.4	20.6	16.5	13.6
29/06/2024 00:00	µg/m <sup>3</sup>		14.7	21.3	27.9	23.2	14.8
30/06/2024 00:00	µg/m <sup>3</sup>		12.3	14.4	15.5	17.9	11.6
<b>Monthly Meaningful Data</b>							
June	µg/m <sup>3</sup>	Minimum*	2.6	1.6	3.8	3.9	2.7
June	µg/m <sup>3</sup>	Mean*	10.1	9.0	16.2	13.1	9.0
June	µg/m <sup>3</sup>	Maximum*	22.8	22.3	27.9	26.8	22.9
June	µg/m <sup>3</sup>	Median*	8.4	8.2	15.7	12.5	7.3

# 24 hour data unavailable due to equipment or communications issue causing one or more missing 10 minute values

\*Data calculated with missing 10 minute value(s) due to equipment or communication issue

MTIE denotes Mount Thorley Industrial Estate

### 3 SURFACE WATER

#### 3.1 Mine Water Discharge Monitoring

MTW participates in the Hunter River Salinity Trading Scheme (HRSTS) and maintains two monitoring locations associated with this scheme.

Results of water monitoring undertaken in accordance with HRSTS requirements are detailed in Table 2 and Table 3. The last sampling date was 7 June 2024 and the data was obtained on 11 June 2024.

**TABLE 2: MINE WATER DISCHARGE MONITORING - VOLUME AND MASS LIMITS**

Monitoring Location	Unit of measure	Volume/mass Limit	No. of samples required by licence	No. of samples you collected and analysed	Lowest Sample Value	Mean of sample	Highest sample value	Median
Dam 1N Discharge / Point 1 (WML EPL 1376) Dam 1N Discharge Point	Megalitres per day	100	0	0	-	-	-	-
Dam 9S Discharge / EPL Point 4 (MTO EPL 1976) Discharge pipe from Dam 9S	Megalitres per day	100	5	5	4.7	24.3	66.9	6.9

**TABLE 3: MINE WATER DISCHARGE MONITORING- CONCENTRATION LIMITS**

Discharge Point	Pollutant	Unit of measure	Licence limits	No. of samples required by licence	No. of samples you collected and analysed	Lowest Sample Value	Mean of sample	Highest sample value	Median
Dam 1N Discharge / Point 1 (WML EPL 1376) Dam 1N Discharge Point	Electrical Conductivity	microsiemens per centimetre	-	0	0	-	-	-	-
	pH	pH	6.5 - 9.5	0	0	-	-	-	-
	Total Suspended Solids	milligrams per litre	120	0	0	-	-	-	-
Dam 1N Discharge Turbidity Monitoring / Point 25 (WML EPL 1376) Continuous turbidity monitor	Turbidity	nephelometric turbidity units	-	0	0	-	-	-	-
Dam 9S Discharge / EPL Point 4 (MTO EPL 1976) Discharge pipe from Dam 9	Electrical Conductivity	microsiemens per centimetre	-	Continuous	Continuous	5961	6003	6023	6013
	pH	pH	6.5 - 9.5	5	5	9.0	9.1	9.2	9.1
	Total Suspended Solids	milligrams per litre	120	5	5	15.0	17.8	23.0	17.0

### 3.2 Water Quality Monitoring

MTW undertakes monitoring in accordance with Condition M2.3 of WML EPL 1376 and MTO EPL 1976 as detailed in **Table 4**. Monthly sampling occurred on 24 June 2024 and the data was obtained 17 July 2024. Next quarterly sampling will occur in September 2024.

**TABLE 4: WATER QUALITY MONITORING**

Monitoring Location	Pollutant	unit of measure	Monitoring frequency required by licence	No. of samples required by licence	No. of samples collected and analysed	Value(s)
W5 – Loders Creek / EPL Point 3 (MTO EPL 1976) Coal preparation plant access road bridge	Electrical Conductivity	microsiemens per centimetre	Once a month (min. of 4 weeks)	1	1	10190
	pH	pH units	Once a month (min. of 4 weeks)	1	1	7.8
	Total Suspended Solids	milligrams per litre	Once a month (min. of 4 weeks)	1	1	12
W1 – Hunter River / EPL Point 26 (WML EPL 1376)	Electrical Conductivity	microsiemens per centimetre	Once a quarter	1	1	787
	pH	pH units	Once a quarter	1	1	8.1
	Total Suspended Solids	milligrams per litre	Once a quarter	1	1	24
W2 – Hunter River / EPL Point 27 (WML EPL 1376)	Electrical Conductivity	microsiemens per centimetre	Once a quarter	1	1	1574
	pH	pH units	Once a quarter	1	1	8.0
	Total Suspended Solids	milligrams per litre	Once a quarter	1	1	14
W3 – Hunter River / EPL Point 28 (WML EPL 1376)	Electrical Conductivity	microsiemens per centimetre	Once a quarter	1	1	785
	pH	pH units	Once a quarter	1	1	8.2
	Total Suspended Solids	milligrams per litre	Once a quarter	1	1	23

Monitoring Location	Pollutant	unit of measure	Monitoring frequency required by licence	No. of samples required by licence	No. of samples collected and analysed	Value(s)
W5 – Loders Creek / EPL Point 29 (WML EPL 1376)	Electrical Conductivity	microsiemens per centimetre	Once a quarter	1	1	10190
	pH	pH units	Once a quarter	1	1	7.8
	Total Suspended Solids	milligrams per litre	Once a quarter	1	1	12
WW5 – Dights Creek / EPL Point 30 (WML EPL 1376)	Electrical Conductivity	microsiemens per centimetre	Once a quarter	1	1	1977
	pH	pH units	Once a quarter	1	1	8.2
	Total Suspended Solids	milligrams per litre	Once a quarter	1	1	9
SW40 – Wollombi Brook Downstream / EPL Point 31 (WML EPL 1376)	Electrical Conductivity	microsiemens per centimetre	Once a quarter	1	1	489
	pH	pH units	Once a quarter	1	1	7.6
	Total Suspended Solids	milligrams per litre	Once a quarter	1	1	6
Wollombi Brook / EPL Point 32 (WML EPL 1376)	Electrical Conductivity	microsiemens per centimetre	Once a quarter	1	1	513
	pH	pH units	Once a quarter	1	1	7.6
	Total Suspended Solids	milligrams per litre	Once a quarter	1	1	8
Wollombi Brook Upstream / EPL Point 33 (WML EPL 1376)	Electrical Conductivity	microsiemens per centimetre	Once a quarter	1	1	491
	pH	pH units	Once a quarter	1	1	7.4
	Total Suspended Solids	milligrams per litre	Once a quarter	1	1	7

# - Sample unable to be collected due to insufficient water or unsafe access



### 3.3 Effluent Quality Monitoring

Monitoring is undertaken in accordance with Condition M2.3 of WML EPL 1376 and MTO EPL 1976 as detailed in **Table 5**. Next quarterly sampling will occur in September 2024.

**TABLE 5: EFFLUENT QUALITY MONITORING**

Monitoring Location	Pollutant	unit of measure	Monitoring frequency required by licence	No. of samples required by licence	No. of samples collected and analysed	Value
North Pit North Crib Hut Envirocycle / EPL Point 14 (WML EPL 1376)	Faecal Coliforms	Colony forming units per 100 millilitres	Once a quarter	1	1	240
	pH	pH units	Once a quarter	1	1	6.7
Main Warkworth Staging Pond / EPL Point 15 (WML EPL 1376)	Faecal Coliforms	Colony forming units per 100 millilitres	Once a quarter	1	1	100
	pH	pH units	Once a quarter	1	1	7.4
Warkworth Admin Envirocycle / EPL Point 16 (WML EPL 1376)	Faecal Coliforms	Colony forming units per 100 millilitres	Once a quarter	1	1	1800000
	pH	pH units	Once a quarter	1	1	7.4
West Pit South Crib Hut Envirocycle / EPL Point 17 (WML EPL 1376)	Faecal Coliforms	Colony forming units per 100 millilitres	Once a quarter	1	1	310
	pH	pH units	Once a quarter	1	1	7.0
Warkworth Medical Centre Envirocycle / EPL Point 18 (WML EPL 1376)	Faecal Coliforms	Colony forming units per 100 millilitres	Once a quarter	1	0	#
	pH	pH units	Once a quarter	1	0	#
Dam 1S / EPL Point 18 (MTO EPL 1976)	Faecal Coliforms	Colony forming units per 100 millilitres	Once a quarter	1	1	290
	pH	pH units	Once a quarter	1	1	9.4
WML - Workshop STP	Faecal Coliforms	Colony forming units per 100 millilitres	Once a quarter	1	1	~300
	pH	pH units	Once a quarter	1	1	4.9

# Sample not collected as effluent now diverted from this point to the newly commissioned "WML - Workshop STP" for treatment (since 28 November 2023).

#### 4 BLAST MONITORING

In accordance with the requirements of Conditions M7.1 (WML EPL 1376) and M8.1 (MTO EPL 1976), MTW maintains a network of blast monitors to measure airblast overpressure and ground vibration for all blasts carried out at MTW. Blast monitoring results are detailed in **Table 6** (Airblast Overpressure) and **Table 7** (Ground Vibration). The last date sampled was on 29 June 2024. The data was obtained on 30 June 2024.

**TABLE 6: BLAST MONITORING (AIRBLAST OVERPRESSURE)**

Blast ID	Date and Time	Unit of Measure	Monitoring Frequency & Capture	EPL Limits		Monitoring Point				
				95% of Blasts	100% of Blasts	Bulga Village EPA ID # 6 (EPL 1376) & EPA ID # 7 (EPL 1976)	Wambo Road EPA ID # 5 (EPL 1376) & EPA ID # 6 (EPL 1976)	Putty Rd MTIE EPA ID # 8 (EPL 1376) & EPA ID # 9 (EPL 1976)	Warkworth EPA ID # 4 (EPL 1376) & EPA ID # 5 (EPL 1976)	Wollemi Peak Road EPA ID # 7 (EPL 1376) & EPA ID # 8 (EPL 1976)
w39-bla-pr2	11/06/2024 12:14	dB(L)	All Blasts 100%	115	120	78.6	101.7	91.3	87.7	110.8
n49-rcea-pr1 & n51-wbd-ps1b	11/06/2024 16:30	dB(L)		115	120	79.4	105.3	85.4	98.0	103.8
n51-wbd-ps1c	12/06/2024 12:20	dB(L)		115	120	92.0	101.8	99.6	88.9	106.0
w34-maa-j-co2	13/06/2024 11:35	dB(L)		115	120	98.9	90.4	94.5	90.9	97.4
n42-bfb-ps1f	13/06/2024 14:33	dB(L)		115	120	78.1	87.3	82.6	91.7	75.7
w48-wyc-pr8	17/06/2024 12:32	dB(L)		115	120	109.9	97.4	102.9	93.1	103.2
w36-bfa-j-co1	17/06/2024 12:33	dB(L)		115	120	96.8	93.9	101.4	101.2	94.6
n45-gmb-pr4	20/06/2024 11:42	dB(L)		115	120	111.9	100.3	122.7	97.2	109.3
w52-wya-ptg1	21/06/2024 13:07	dB(L)		115	120	112.3	96.8	94.9	94.7	109.8
w35-bfa-ps1b	22/06/2024 12:38	dB(L)		115	120	86.2	89.7	96.2	86.0	98.7

MTW EPL Monitoring Data  
FOR THE MONTH ENDING 30 June 2024

Blast ID	Date and Time	Unit of Measure	Monitoring Frequency & Capture	EPL Limits		Monitoring Point				
				95% of Blasts	100% of Blasts	Bulga Village EPA ID # 6 (EPL 1376) & EPA ID # 7 (EPL 1976)	Wambo Road EPA ID # 5 (EPL 1376) & EPA ID # 6 (EPL 1976)	Putty Rd MTIE EPA ID # 8 (EPL 1376) & EPA ID # 9 (EPL 1976)	Warkworth EPA ID # 4 (EPL 1376) & EPA ID # 5 (EPL 1976)	Wollemi Peak Road EPA ID # 7 (EPL 1376) & EPA ID # 8 (EPL 1976)
w36-bfa-j-co2	24/06/2024 12:32	dB(L)		115	120	96.7	92.5	97.5	92.9	96.9
n51-rce-pr1	24/06/2024 12:35	dB(L)		115	120	102.8	102.8	104.7	99.1	102.9
n45-whc-ps2e	25/06/2024 12:13	dB(L)		115	120	101.0	96.5	88.8	92.2	93.8
w35-bfa-md1	26/06/2024 13:41	dB(L)		115	120	102.8	93.2	98.0	85.6	102.2
n51-wbd-ps1d	27/06/2024 12:15	dB(L)		115	120	104.0	98.1	101.1	88.5	93.7
w50-wyc-ptg3	28/06/2024 12:45	dB(L)		115	120	85.2	101.9	90.9	88.2	99.5
n42-bfb-ps1g	29/06/2024 13:31	dB(L)		115	120	75.3	100.1	83.3	81.9	103.5
<b>Monthly Meaningful Data</b>										
<b>Minimum</b>	<b>June</b>	<b>dB(L)</b>		115	120	75.3	87.3	82.6	81.9	75.7
<b>Mean</b>	<b>June</b>	<b>dB(L)</b>		115	120	94.8	97.0	96.2	91.6	100.1
<b>Maximum</b>	<b>June</b>	<b>dB(L)</b>		115	120	112.3	105.3	122.7	101.2	110.8
<b>Median</b>	<b>June</b>	<b>dB(L)</b>		115	120	96.8	97.4	96.2	91.7	102.2

**TABLE 7: BLAST MONITORING (GROUND VIBRATION)**

Blast ID	Date and Time	Unit of Measure	Monitoring Frequency & Capture	EPL Limits		Monitoring Point				
				95% of Blasts	100% of Blasts	Bulga Village EPA ID # 6 (EPL 1376) & EPA ID # 7 (EPL 1976)	Wambo Road EPA ID # 5 (EPL 1376) & EPA ID # 6 (EPL 1976)	Putty Rd MTIE EPA ID # 8 (EPL 1376) & EPA ID # 9 (EPL 1976)	Warkworth EPA ID # 4 (EPL 1376) & EPA ID # 5 (EPL 1976)	Wollemi Peak Road EPA ID # 7 (EPL 1376) & EPA ID # 8 (EPL 1976)
w39-bla-pr2	11/06/2024 12:14	mm/s	All Blasts 100%	5	10	0.83	0.80	0.09	0.68	0.47
n49-rcea-pr1 & n51-wbd-ps1b	11/06/2024 16:30	mm/s		5	10	0.73	1.55	0.12	2.48	0.37
n51-wbd-ps1c	12/06/2024 12:20	mm/s		5	10	0.32	0.40	0.06	0.40	0.25
w34-maa-j-co2	13/06/2024 11:35	mm/s		5	10	0.10	0.10	0.04	0.66	0.06
n42-bfb-ps1f	13/06/2024 14:33	mm/s		5	10	0.79	1.74	0.17	2.35	0.95
w48-wyc-pr8	17/06/2024 12:32	mm/s		5	10	1.26	1.31	0.10	0.25	2.04
w36-bfa-j-co1	17/06/2024 12:33	mm/s		5	10	0.15	0.19	0.05	0.68	0.13
n45-gmb-pr4	20/06/2024 11:42	mm/s		5	10	1.37	2.70	0.39	1.25	0.96
w52-wya-ptg1	21/06/2024 13:07	mm/s		5	10	0.20	0.11	0.03	0.14	0.11
w35-bfa-ps1b	22/06/2024 12:38	mm/s		5	10	1.01	0.50	0.09	0.40	0.48
w36-bfa-j-co2	24/06/2024 12:32	mm/s		5	10	0.13	0.15	0.03	0.15	0.10
n51-rce-pr1	24/06/2024 12:35	mm/s		5	10	0.48	0.81	0.09	2.75	0.31
n45-whc-ps2e	25/06/2024 12:13	mm/s		5	10	0.52	1.70	0.21	1.29	0.43

MTW EPL Monitoring Data  
FOR THE MONTH ENDING 30 June 2024

Blast ID	Date and Time	Unit of Measure	Monitoring Frequency & Capture	EPL Limits		Monitoring Point				
				95% of Blasts	100% of Blasts	Bulga Village EPA ID # 6 (EPL 1376) & EPA ID # 7 (EPL 1976)	Wambo Road EPA ID # 5 (EPL 1376) & EPA ID # 6 (EPL 1976)	Putty Rd MTIE EPA ID # 8 (EPL 1376) & EPA ID # 9 (EPL 1976)	Warkworth EPA ID # 4 (EPL 1376) & EPA ID # 5 (EPL 1976)	Wollemi Peak Road EPA ID # 7 (EPL 1376) & EPA ID # 8 (EPL 1976)
w35-bfa-md1	26/06/2024 13:41	mm/s		5	10	1.32	1.05	0.18	0.65	0.83
n51-wbd-ps1d	27/06/2024 12:15	mm/s		5	10	0.62	0.40	0.09	0.40	0.57
w50-wyc-ptg3	28/06/2024 12:45	mm/s		5	10	0.17	0.20	0.04	0.16	0.11
n42-bfb-ps1g	29/06/2024 13:31	mm/s		5	10	0.77	1.00	0.19	2.29	0.75
<b>Monthly Meaningful Data</b>										
<b>Minimum</b>	<b>June</b>	<b>mm/s</b>		5	10	0.10	0.10	0.03	0.14	0.06
<b>Mean</b>	<b>June</b>	<b>mm/s</b>		5	10	0.63	0.87	0.12	1.00	0.52
<b>Maximum</b>	<b>June</b>	<b>mm/s</b>		5	10	1.37	2.70	0.39	2.75	2.04
<b>Median</b>	<b>June</b>	<b>mm/s</b>		5	10	0.62	0.80	0.09	0.66	0.43

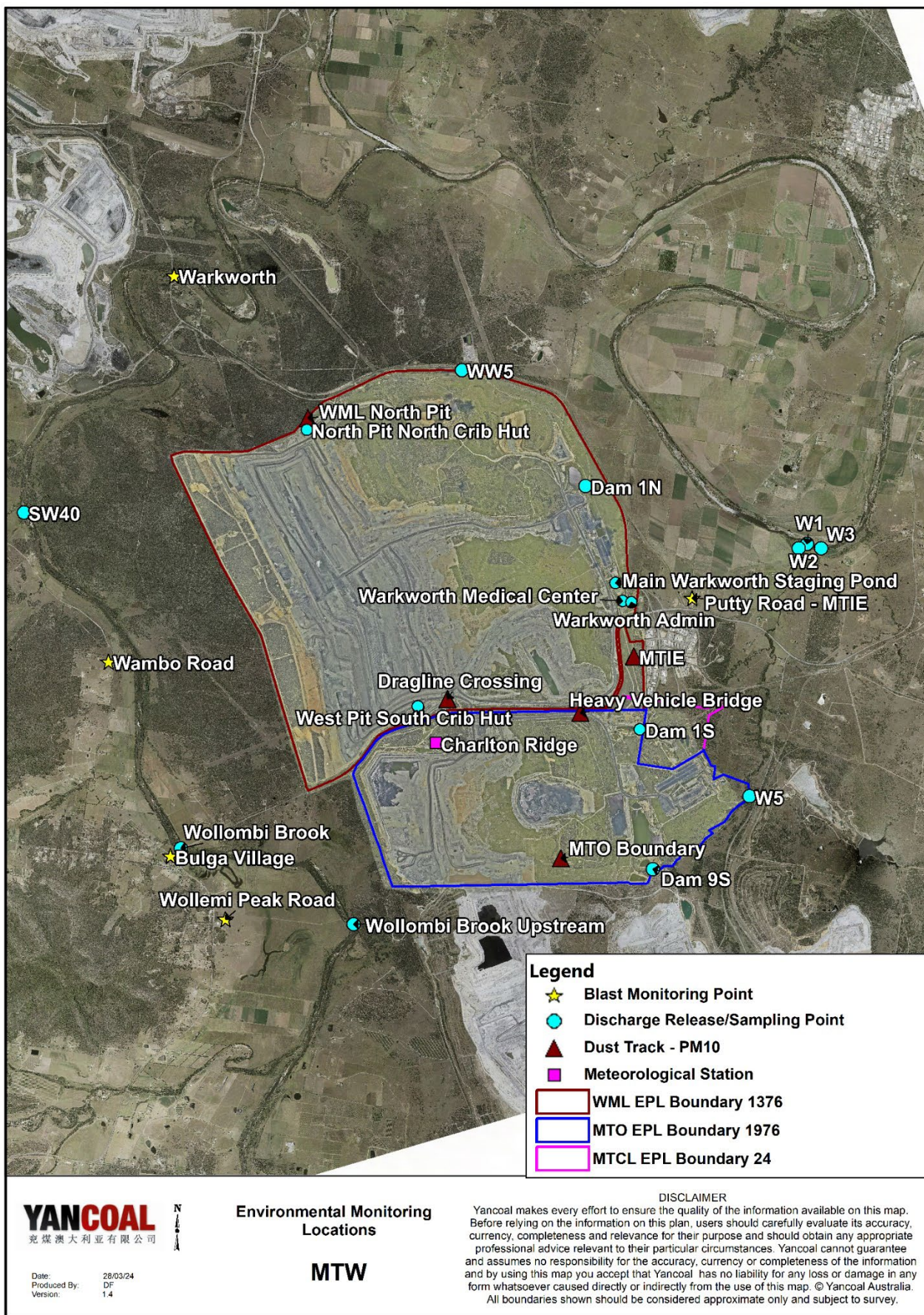


Figure 1 : Mount Thorley Warkworth Environmental Monitoring Locations