



Mount Thorley Warkworth EPL Monitoring Data

Published 26 October 2020
FOR THE MONTH ENDING 30 September 2020

Name of Operation	Mount Thorley Coal Loader
Environment Protection Licence	24
Licensee	Mount Thorley Coal Loading Ltd
Premises	Mount Thorley Coal Loading Ltd Mount Thorley Road, Mount Thorley Via Singleton NSW 2330
EPL Link	http://app.epa.nsw.gov.au/prpoeoapp/ViewPOEOLicence.aspx?DOCID=89660&SYSUID=1&LICID=24
Name of Operation	Mount Thorley Operations
Environment Protection Licence	1976
Licensee	Mount Thorley Operations Pty Limited
Premises	Mount Thorley Operations Mount Thorley Road Mount Thorley NSW 2330
EPL Link	https://apps.epa.nsw.gov.au/prpoeoapp/ViewPOEOLicence.aspx?DOCID=161559&SYSUID=1&LICID=1976
Name of Operation	Warkworth Coal Mine
Environment Protection Licence	1376
Licensee	Warkworth Mining Ltd
Premises	Warkworth Coal Mine Putty Road Mount Thorley NSW 2330
EPL Link	https://apps.epa.nsw.gov.au/prpoeoapp/ViewPOEOLicence.aspx?DOCID=160262&SYSUID=1&LICID=1376

1 INTRODUCTION

This report provides a summary of environmental monitoring results for Mount Thorley Warkworth (MTW) in accordance with the requirements of the following Environment Protection Licences (EPL):

- EPL24 – Mount Thorley Coal Loader (MTCL);
- EPL1376 – Warkworth Mining Limited (WML); and
- EPL1976 – Mount Thorley Operations (MTO).

This report includes all monitoring data collected in accordance with the above licences for the period 1 to 30 September 2020.

Monitoring in this report includes:

- Air quality monitoring;
- Surface water monitoring including mine water discharge and effluent quality; and
- Blast monitoring.

Monitoring locations are shown in **Figure 1**.

2 AIR QUALITY

In accordance with the requirements of Condition M2.2 of WML EPL 1376 and MTO EPL 1976, MTW maintains a network of five PM₁₀ monitors.

Results of Particulates (PM₁₀) monitoring are shown in **Table 1**. Results reported represent the 24hr average PM₁₀, derived from 10 minute PM₁₀ values for the period midnight to midnight, for each calendar date during the reporting period. The last sampling date was 30 September 2020 and the data was obtained on 1 October 2020.

TABLE 1: PARTICULATE MATTER <10µM MONITORING

Date	Unit of Measure	Monitoring Frequency & Capture	Monitoring Point				
			Warkworth North (EPA ID # 9 - WML EPL 1376)	MTO Boundary (EPA ID # 13 - MTO EPL 1976)	Dragline Crossing (EPA ID # 10 - WML EPL 1376 & MTO EPL 1976)	Heavy Vehicle Bridge (EPA ID # 11 - WML EPL 1376 & MTO EPL 1976)	MTIE (EPA ID # 12 - WML EPL 1376 & EPA ID #19 - MTO EPL 1976)
1/09/2020	µg/m ³	Continuous	7.0	7.8	10.8	10.6	10.4
2/09/2020	µg/m ³		12.1	14.9	27.0	20.7	23.1
3/09/2020	µg/m ³		15.2	23.9	46.5	29.7	24.0
4/09/2020	µg/m ³		12.4	14.5	30.0	17.7	17.0
5/09/2020	µg/m ³		6.2	7.1	12.8	9.3	7.2
6/09/2020	µg/m ³		15.2	6.9	7.7	11.0	7.3
7/09/2020	µg/m ³		11.3	4.8	6.5	7.1	4.3
8/09/2020	µg/m ³		9.9	7.6	18.4	12.9	10.6
9/09/2020	µg/m ³		13.3	7.7	9.8	15.1	11.8
10/09/2020	µg/m ³		11.6	3.7	4.1	5.3	3.6
11/09/2020	µg/m ³		9.4	2.9	4.4	5.2	3.0
12/09/2020	µg/m ³		6.7	5.0	15.6	12.5	11.4
13/09/2020	µg/m ³		4.6	10.5	27.1	23.4	12.9
14/09/2020	µg/m ³		6.0	6.6	#	15.3	10.6
15/09/2020	µg/m ³		12.0	9.2	12.3	17.0	13.7
16/09/2020	µg/m ³		10.6	13.5	26.6	20.9	15.8
17/09/2020	µg/m ³		11.6	12.5	24.8	19.9	17.9
18/09/2020	µg/m ³		16.8	10.4	11.7	15.9	14.7
19/09/2020	µg/m ³		16.0	10.3	11.5	18.5	12.7
20/09/2020	µg/m ³		13.8	8.0	11.3	12.1	9.9
21/09/2020	µg/m ³		8.2	9.3	20.0	17.0	13.6
22/09/2020	µg/m ³		3.7	5.2	18.9	9.5	5.7
23/09/2020	µg/m ³		3.4	5.8	17.9	9.4	4.1

MTW EPL Monitoring Data
FOR THE MONTH ENDING 30 September 2020

Date	Unit of Measure	Monitoring Frequency & Capture	Monitoring Point				
			Warkworth North (EPA ID # 9 - WML EPL 1376)	MTO Boundary (EPA ID # 13 - MTO EPL 1976)	Dragline Crossing (EPA ID # 10 - WML EPL 1376 & MTO EPL 1976)	Heavy Vehicle Bridge (EPA ID # 11 - WML EPL 1376 & MTO EPL 1976)	MTIE (EPA ID # 12 - WML EPL 1376 & EPA ID #19 - MTO EPL 1976)
24/09/2020	µg/m ³		2.4	4.1	19.3	10.1	3.8
25/09/2020	µg/m ³		3.5	8.0	19.9	14.0	4.5
26/09/2020	µg/m ³		0.8	1.2	10.6	2.7	#
27/09/2020	µg/m ³		5.8	8.1	12.8	8.8	4.3
28/09/2020	µg/m ³		11.1	3.4	7.6	9.8	4.6
29/09/2020	µg/m ³		10.1	4.4	7.5	12.5	5.4
30/09/2020	µg/m ³		8.0	9.2	18.9	12.4	8.5
Monthly Meaningful Data							
September	µg/m ³	Minimum	0.8	1.2	4.1*	2.7	1.5*
September	µg/m ³	Mean	9.3	8.2	16.4*	13.5	9.9*
September	µg/m ³	Maximum	16.8	23.9	46.5*	29.7	24.0*
September	µg/m ³	Median	10.0	7.7	14.2*	12.5	10.1*

24 hour data unavailable due to equipment or communications issue causing one or more missing 10 minute values

*Data calculated with missing 10 minute value(s) due to equipment or communication issue

MTIE denotes Mount Thorley Industrial Estate

3 SURFACE WATER

3.1 Mine Water Discharge Monitoring

MTW participates in the Hunter River Salinity Trading Scheme (HRSTS) and maintains two monitoring locations associated with this scheme.

MTW did not receive any discharge opportunities in the reporting period and no water was discharged as shown in **Table 2**. As such, no samples were collected during the reporting period as shown in **Table 3**.

TABLE 2: MINE WATER DISCHARGE MONITORING - VOLUME AND MASS LIMITS

Monitoring Location	Unit of measure	Volume/mass Limit	Volume/mass Discharged
Dam 1N Discharge / Point 1 (WML EPL 1376) Dam 1N Discharge Point	Megalitres per day	100	-
Dam 9S Discharge / EPL Point 4 (MTO EPL 1976) Discharge pipe from Dam 9	Megalitres per day	100	-

TABLE 3: MINE WATER DISCHARGE MONITORING- CONCENTRATION LIMITS

Discharge Point	Date	Pollutant	Unit of measure	Licence limits	No. of samples required by licence	No. of samples you collected and analysed
Dam 1N Discharge / Point 1 (WML EPL 1376) Dam 1N Discharge Point	N/A	Electrical Conductivity	microsiemens per centimetre	-	0	0
		pH	pH	6.5 - 9.0	0	0
		Total Suspended Solids	milligrams per litre	120	0	0
Dam 1N Discharge Turbidity Monitoring / Point 25 (WML EPL 1376) Continuous turbidity monitor	N/A	Turbidity	nephelometric turbidity units	-	0	0
Dam 9S Discharge / EPL Point 4 (MTO EPL 1976) Discharge pipe from Dam 9	N/A	Electrical Conductivity	microsiemens per centimetre	-	0	0
		pH	pH	6.5 - 9.0	0	0
		Total Suspended Solids	milligrams per litre	120	0	0

3.2 Water Quality Monitoring

MTW undertakes monitoring in accordance with Condition M2.3 of WML EPL 1376 and MTO EPL 1976 as detailed in **Table 4**. Monthly sampling occurred 11 September 2020 and the data was obtained 12 October 2020.

TABLE 4: WATER QUALITY MONITORING

Monitoring Location	Pollutant	unit of measure	Monitoring frequency required by licence	No. of samples required by licence	No. of samples collected and analysed	Value
W5 – Loders Creek / EPL Point 3 (MTO EPL 1976) Coal preparation plant access road bridge	Electrical Conductivity	microsiemens per centimetre	Once a month (min. of 4 weeks)	1	1	4160
	pH	pH units	Once a month (min. of 4 weeks)	1	1	7.8
	Total Suspended Solids	milligrams per litre	Once a month (min. of 4 weeks)	1	1	3
W1 – Hunter River / EPL Point 26 (WML EPL 1376)	Electrical Conductivity	microsiemens per centimetre	Once a quarter	1	1	716
	pH	pH units	Once a quarter	1	1	8.1
	Total Suspended Solids	milligrams per litre	Once a quarter	1	1	39
W2 – Hunter River / EPL Point 27 (WML EPL 1376)	Electrical Conductivity	microsiemens per centimetre	Once a quarter	1	1	1845
	pH	pH units	Once a quarter	1	1	8.2
	Total Suspended Solids	milligrams per litre	Once a quarter	1	1	33
W3 – Hunter River / EPL Point 28 (WML EPL 1376)	Electrical Conductivity	microsiemens per centimetre	Once a quarter	1	1	726
	pH	pH units	Once a quarter	1	1	8.1
	Total Suspended Solids	milligrams per litre	Once a quarter	1	1	37
W5 – Loders Creek / EPL Point 29 (WML EPL 1376)	Electrical Conductivity	microsiemens per centimetre	Once a quarter	1	1	4160
	pH	pH units	Once a quarter	1	1	7.8
	Total Suspended Solids	milligrams per litre	Once a quarter	1	1	3
WW5 – Dights Creek / EPL Point 30 (WML EPL 1376)	Electrical Conductivity	microsiemens per centimetre	Once a quarter	1	0	#

Monitoring Location	Pollutant	unit of measure	Monitoring frequency required by licence	No. of samples required by licence	No. of samples collected and analysed	Value
	pH	pH units	Once a quarter	1	0	#
	Total Suspended Solids	milligrams per litre	Once a quarter	1	0	#
SW40 – Wollombi Brook Downstream / EPL Point 31 (WML EPL 1376)	Electrical Conductivity	microsiemens per centimetre	Once a quarter	1	1	531
	pH	pH units	Once a quarter	1	1	7.2
	Total Suspended Solids	milligrams per litre	Once a quarter	1	1	2
Wollombi Brook / EPL Point 32 (WML EPL 1376)	Electrical Conductivity	microsiemens per centimetre	Once a quarter	1	0	#
	pH	pH units	Once a quarter	1	0	#
	Total Suspended Solids	milligrams per litre	Once a quarter	1	0	#
Wollombi Brook Upstream / EPL Point 33 (WML EPL 1376)	Electrical Conductivity	microsiemens per centimetre	Once a quarter	1	1	517
	pH	pH units	Once a quarter	1	1	7.1
	Total Suspended Solids	milligrams per litre	Once a quarter	1	1	4

- Sample unable to be collected due to insufficient water or unsafe access

3.3 Effluent Quality Monitoring

Monitoring is undertaken in accordance with Condition M2.3 of WML EPL 1376 and MTO EPL 1976 as detailed in **Table 5**. Monthly sampling occurred 14 September 2020 and the data was obtained 12 October 2020.

TABLE 5: EFFLUENT QUALITY MONITORING

Monitoring Location	Pollutant	unit of measure	Monitoring frequency required by licence	No. of samples required by licence	No. of samples collected and analysed	Value
North Pit North Crib Hut Envirocycle / EPL Point 14 (WML EPL 1376)	Faecal Coliforms	Colony forming units per 100 millilitres	Once a quarter	1	1	~36
	pH	pH units	Once a quarter	1	1	7.8
Main Warkworth Staging Pond / EPL Point 15 (WML EPL 1376)	Faecal Coliforms	Colony forming units per 100 millilitres	Once a quarter	1	1	~2000
	pH	pH units	Once a quarter	1	1	8.9
Warkworth Admin Envirocycle / EPL Point 16 (WML EPL 1376)	Faecal Coliforms	Colony forming units per 100 millilitres	Once a quarter	1	1	56,000
	pH	pH units	Once a quarter	1	1	7.8
West Pit South Crib Hut Envirocycle / EPL Point 17 (WML EPL 1376)	Faecal Coliforms	Colony forming units per 100 millilitres	Once a quarter	1	1	4,800,000
	pH	pH units	Once a quarter	1	1	8.0
Warkworth Medical Centre Envirocycle / EPL Point 18 (WML EPL 1376)	Faecal Coliforms	Colony forming units per 100 millilitres	Once a quarter	1	1	<9
	pH	pH units	Once a quarter	1	1	3.7
Dam 1S / EPL Point 18 (MTO EPL 1976)	Faecal Coliforms	Colony forming units per 100 millilitres	Once a quarter	1	1	~270
	pH	pH units	Once a quarter	1	1	8.7

4 BLAST MONITORING

In accordance with the requirements of Conditions M7.1 (WML EPL 1376) and M8.1 (MTO EPL 1976), MTW maintains a network of blast monitors to measure airblast overpressure and ground vibration for all blasts carried out at MTW. Blast monitoring results are detailed in **Table 6** (Airblast Overpressure) and **Table 7** (Ground Vibration). The last date sampled was on 30 September 2020. The data was obtained on 1 October 2020.

TABLE 6: BLAST MONITORING (AIRBLAST OVERPRESSURE)

Blast ID	Date and Time	Unit of Measure	Monitoring Frequency & Capture	EPL Limits		Monitoring Point				
				95% of Blasts	100% of Blasts	Bulga Village EPA ID # 6 (EPL 1376) & EPA ID # 7 (EPL 1976)	Wambo Road EPA ID # 5 (EPL 1376) & EPA ID # 6 (EPL 1976)	Putty Rd MTIE EPA ID # 8 (EPL 1376) & EPA ID # 9 (EPL 1976)	Warkworth EPA ID # 4 (EPL 1376) & EPA ID # 5 (EPL 1976)	Wollemi Peak Road EPA ID # 7 (EPL 1376) & EPA ID # 8 (EPL 1976)
n43-blh-ptg1	2/09/2020 12:47	dB(L)	All Blasts 100%	115	120	110.3	104.4	111.9	105.6	109.0
w35-bla-pr2	3/09/2020 10:03	dB(L)		115	120	100.5	104.7	102.0	107.5	107.7
w32-gmd-ptg6	5/09/2020 12:50	dB(L)		115	120	99.8	104.2	103.2	96.6	98.7
n39-whf-pr5	8/09/2020 12:53	dB(L)		115	120	111.3	103.6	104.5	103.4	85.4
w30-wwe-ps1	9/09/2020 12:49	dB(L)		115	120	90.2	94.9	98.0	93.9	98.9
l53-gma-whd-co1	10/09/2020 11:55	dB(L)		115	120	106.6	106.6	98.9	98.6	107.7
n39-gmb-pr14	11/09/2020 13:28	dB(L)		115	120	101.9	105.6	98.4	112.9	95.6
n36-bfb-j-co3 & n36- wwa-ptg3	14/09/2020 11:41	dB(L)		115	120	96.5	94.3	90.4	102.2	88.3
w32-wha-c-co2	17/09/2020 13:45	dB(L)		115	120	100.3	99.3	108.4	96.8	106.3

MTW EPL Monitoring Data
FOR THE MONTH ENDING 30 September 2020

Blast ID	Date and Time	Unit of Measure	Monitoring Frequency & Capture	EPL Limits		Monitoring Point				
				95% of Blasts	100% of Blasts	Bulga Village EPA ID # 6 (EPL 1376) & EPA ID # 7 (EPL 1976)	Wambo Road EPA ID # 5 (EPL 1376) & EPA ID # 6 (EPL 1976)	Putty Rd MTIE EPA ID # 8 (EPL 1376) & EPA ID # 9 (EPL 1976)	Warkworth EPA ID # 4 (EPL 1376) & EPA ID # 5 (EPL 1976)	Wollemi Peak Road EPA ID # 7 (EPL 1376) & EPA ID # 8 (EPL 1976)
w32-wwa-ptg1 & w30- wwe-ps2	17/09/2020 13:45	dB(L)		115	120	101.7	101.0	106.0	96.8	108.2
n39-whf-pr6	18/09/2020 11:23	dB(L)		115	120	96.3	101.8	91.8	110.3	93.4
w30-wwe-md1	22/09/2020 10:19	dB(L)		115	120	100.3	94.2	105.1	96.0	102.1
w42-wyc-pr4	23/09/2020 12:47	dB(L)		115	120	98.9	94.6	106.7	97.9	105.6
w32-whe-ps3	23/09/2020 12:48	dB(L)		115	120	94.8	99.3	111.2	93.7	98.7
w30-wwe-md2	25/09/2020 9:48	dB(L)		115	120	104.1	99.2	103.0	98.9	100.0
n43-blh-ptg2	28/09/2020 12:55	dB(L)		115	120	93.6	91.7	92.6	103.6	88.2
w32-whe-pr6	30/09/2020 12:46	dB(L)		115	120	100.5	98.5	97.5	103.2	109.6
w35-wnd-pr2	30/09/2020 12:47	dB(L)		115	120	109.5	98.5	97.8	98.1	114.0
Monthly Meaningful Data										
Minimum	September	dB(L)		115	120	90.2	91.7	90.4	93.7	85.4
Mean	September	dB(L)		115	120	100.9	99.8	101.5	100.9	101.0
Maximum	September	dB(L)		115	120	111.3	106.6	111.9	112.9	114.0
Median	September	dB(L)		115	120	100.4	99.3	102.5	98.8	101.1

TABLE 7: BLAST MONITORING (GROUND VIBRATION)

Blast ID	Date and Time	Unit of Measure	Monitoring Frequency & Capture	EPL Limits		Monitoring Point				
				95% of Blasts	100% of Blasts	Bulga Village EPA ID # 6 (EPL 1376) & EPA ID # 7 (EPL 1976)	Wambo Road EPA ID # 5 (EPL 1376) & EPA ID # 6 (EPL 1976)	Putty Rd MTIE EPA ID # 8 (EPL 1376) & EPA ID # 9 (EPL 1976)	Warkworth EPA ID # 4 (EPL 1376) & EPA ID # 5 (EPL 1976)	Wollemi Peak Road EPA ID # 7 (EPL 1376) & EPA ID # 8 (EPL 1976)
n43-blh-ptg1	2/09/2020 12:47	mm/s	All Blasts 100%	5	10	0.04	0.06	0.03	0.21	0.04
w35-bla-pr2	3/09/2020 10:03	mm/s		5	10	1.78	1.04	0.18	0.89	1.13
w32-gmd-ptg6	5/09/2020 12:50	mm/s		5	10	0.11	0.10	0.03	0.11	0.16
n39-whf-pr5	8/09/2020 12:53	mm/s		5	10	0.72	0.65	0.22	1.66	0.64
w30-wwe-ps1	9/09/2020 12:49	mm/s		5	10	0.97	0.94	0.30	3.08	0.81
l53-gma-whd-co1	10/09/2020 11:55	mm/s		5	10	0.37	0.17	0.04	0.65	0.27
n39-gmb-pr14	11/09/2020 13:28	mm/s		5	10	0.50	0.48	0.07	0.52	0.63
n36-bfb-j-co3 & n36- wwa-ptg3	14/09/2020 11:41	mm/s		5	10	0.06	0.13	0.03	0.20	0.05
w32-wha-c-co2	17/09/2020 13:45	mm/s		5	10	0.78	0.60	0.26	3.08	0.97
w32-wwa-ptg1 & w30- wwe-ps2	17/09/2020 13:45	mm/s		5	10	0.78	0.60	0.26	3.08	0.97
n39-whf-pr6	18/09/2020 11:23	mm/s		5	10	0.54	0.54	0.10	1.64	0.23
w30-wwe-md1	22/09/2020 10:19	mm/s		5	10	1.04	1.20	0.18	2.82	1.15
w42-wyc-pr4	23/09/2020 12:47	mm/s		5	10	0.71	0.63	0.18	0.54	0.78

MTW EPL Monitoring Data
FOR THE MONTH ENDING 30 September 2020

Blast ID	Date and Time	Unit of Measure	Monitoring Frequency & Capture	EPL Limits		Monitoring Point				
				95% of Blasts	100% of Blasts	Bulga Village EPA ID # 6 (EPL 1376) & EPA ID # 7 (EPL 1976)	Wambo Road EPA ID # 5 (EPL 1376) & EPA ID # 6 (EPL 1976)	Putty Rd MTIE EPA ID # 8 (EPL 1376) & EPA ID # 9 (EPL 1976)	Warkworth EPA ID # 4 (EPL 1376) & EPA ID # 5 (EPL 1976)	Wollemi Peak Road EPA ID # 7 (EPL 1376) & EPA ID # 8 (EPL 1976)
w32-whe-ps3	23/09/2020 12:48	mm/s		5	10	0.71	0.63	0.18	0.54	0.78
w30-wwe-md2	25/09/2020 9:48	mm/s		5	10	2.03	1.93	0.32	4.65	1.93
n43-blh-ptg2	28/09/2020 12:55	mm/s		5	10	0.08	0.10	0.03	0.98	0.06
w32-whe-pr6	30/09/2020 12:46	mm/s		5	10	0.95	0.70	0.14	0.50	0.71
w35-wnd-pr2	30/09/2020 12:47	mm/s		5	10	0.86	0.42	0.06	0.62	0.55
Monthly Meaningful Data										
Minimum	September	mm/s		5	10	0.04	0.06	0.03	0.11	0.04
Mean	September	mm/s		5	10	0.72	0.61	0.15	1.43	0.66
Maximum	September	mm/s		5	10	2.03	1.93	0.32	4.65	1.93
Median	September	mm/s		5	10	0.72	0.60	0.16	0.77	0.68

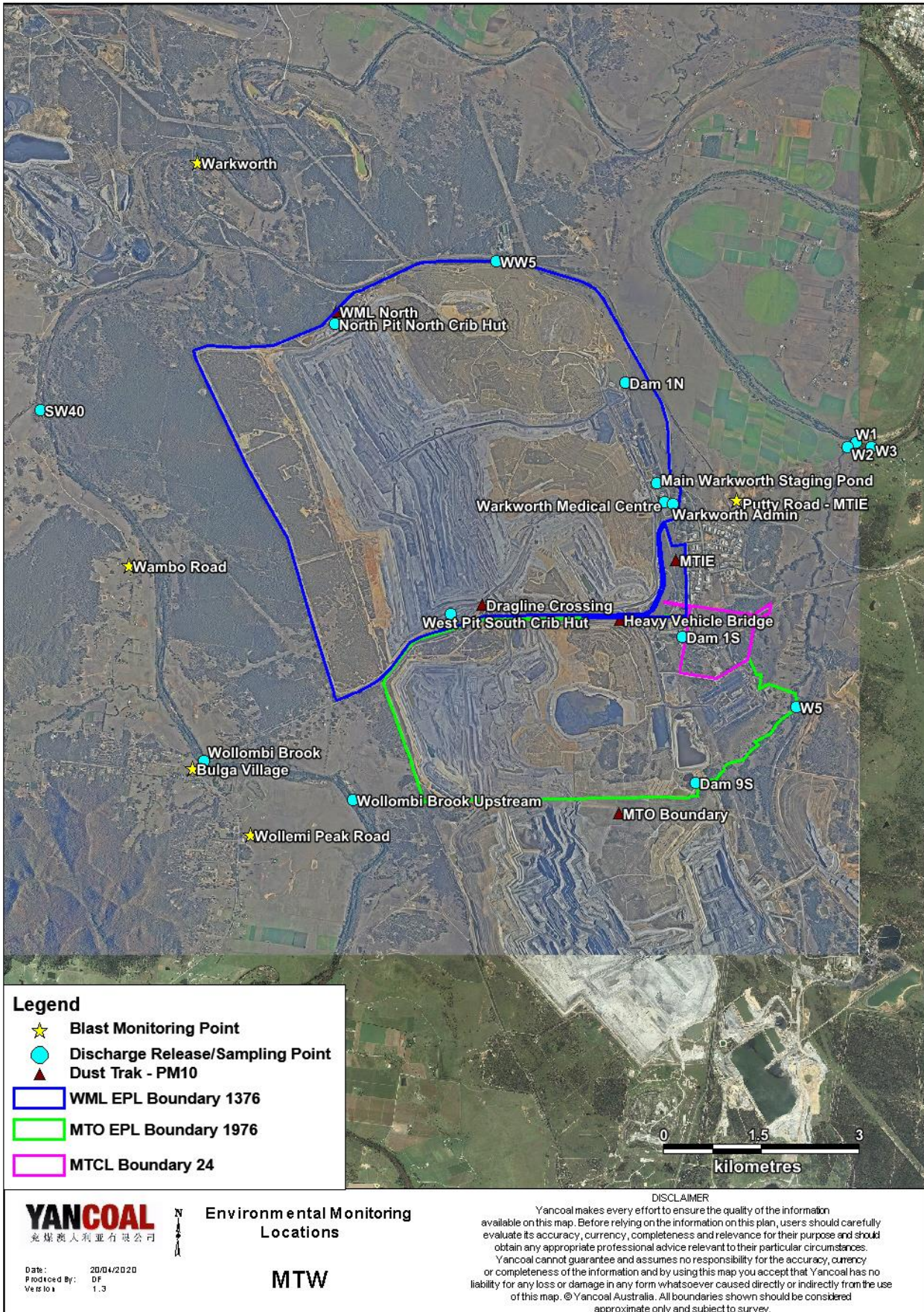


Figure 1 : Mount Thorley Warkworth Environmental Monitoring Locations