



Mount Thorley Warkworth EPL Monitoring Data

Published 24 August 2020
FOR THE MONTH ENDING 31 July 2020

Name of Operation	Mount Thorley Coal Loader
Environment Protection Licence	24
Licensee	Mount Thorley Coal Loading Ltd
Premises	Mount Thorley Coal Loading Ltd Mount Thorley Road, Mount Thorley Via Singleton NSW 2330
EPL Link	http://app.epa.nsw.gov.au/prpoeoapp/ViewPOEOLicence.aspx?DOCID=89660&SYSUID=1&LICID=24
Name of Operation	Mount Thorley Operations
Environment Protection Licence	1976
Licensee	Mount Thorley Operations Pty Limited
Premises	Mount Thorley Operations Mount Thorley Road Mount Thorley NSW 2330
EPL Link	https://apps.epa.nsw.gov.au/prpoeoapp/ViewPOEOLicence.aspx?DOCID=161559&SYSUID=1&LICID=1976
Name of Operation	Warkworth Coal Mine
Environment Protection Licence	1376
Licensee	Warkworth Mining Ltd
Premises	Warkworth Coal Mine Putty Road Mount Thorley NSW 2330
EPL Link	https://apps.epa.nsw.gov.au/prpoeoapp/ViewPOEOLicence.aspx?DOCID=160262&SYSUID=1&LICID=1376

1 INTRODUCTION

This report provides a summary of environmental monitoring results for Mount Thorley Warkworth (MTW) in accordance with the requirements of the following Environment Protection Licences (EPL):

- EPL24 – Mount Thorley Coal Loader (MTCL);
- EPL1376 – Warkworth Mining Limited (WML); and
- EPL1976 – Mount Thorley Operations (MTO).

This report includes all monitoring data collected in accordance with the above licences for the period 1 to 31 July 2020.

Monitoring in this report includes:

- Air quality monitoring;
- Surface water monitoring including mine water discharge and effluent quality; and
- Blast monitoring.

Monitoring locations are shown in **Figure 1**.

2 AIR QUALITY

In accordance with the requirements of Condition M2.2 of WML EPL 1376 and MTO EPL 1976, MTW maintains a network of five PM₁₀ monitors.

Results of Particulates (PM₁₀) monitoring are shown in **Table 1**. Results reported represent the 24hr average PM₁₀, derived from 10 minute PM₁₀ values for the period midnight to midnight, for each calendar date during the reporting period. The last sampling date was 31 July 2020 and the data was obtained on 1 August 2020.

TABLE 1: PARTICULATE MATTER <10µM MONITORING

Date	Unit of Measure	Monitoring Frequency & Capture	Monitoring Point				
			Warkworth North (EPA ID # 9 - WML EPL 1376)	MTO Boundary (EPA ID # 13 - MTO EPL 1976)	Dragline Crossing (EPA ID # 10 - WML EPL 1376 & MTO EPL 1976)	Heavy Vehicle Bridge (EPA ID # 11 - WML EPL 1376 & MTO EPL 1976)	MTIE (EPA ID # 12 - WML EPL 1376 & EPA ID #19 - MTO EPL 1976)
1/07/2020	µg/m ³	Continuous	8.9	13.9	85.4	19.1	6.2
2/07/2020	µg/m ³		5.6	11.7	62.4	12.0	6.2
3/07/2020	µg/m ³		4.1	8.5	56.2	13.1	3.7
4/07/2020	µg/m ³		1.7	4.3	31.3	3.7	0.9
5/07/2020	µg/m ³		1.9	5.5	35.5	4.3	1.2
6/07/2020	µg/m ³		4.7	8.7	51.8	12.2	6.3
7/07/2020	µg/m ³		17.8	7.3	47.7	12.5	8.2
8/07/2020	µg/m ³		12.8	4.0	8.7	4.2	2.2
9/07/2020	µg/m ³		17.1	5.7	30.9	9.5	7.5
10/07/2020	µg/m ³		14.9	10.7	49.4	14.4	6.3
11/07/2020	µg/m ³		14.4	14.7	49.7	20.8	8.5
12/07/2020	µg/m ³		3.1	5.2	35.5	7.8	3.1
13/07/2020	µg/m ³		3.2	6.5	35.2	7.5	2.5
14/07/2020	µg/m ³		5.1	3.2	13.9	3.7	1.3
15/07/2020	µg/m ³		6.8	0.7	7.6	1.7	1.3
16/07/2020	µg/m ³		4.7	3.0	22.2	4.6	#
17/07/2020	µg/m ³		9.1	1.5	11.2	2.2	1.6
18/07/2020	µg/m ³		7.8	4.0	16.4	4.9	2.3
19/07/2020	µg/m ³		7.1	11.9	44.2	12.4	4.7
20/07/2020	µg/m ³		1.9	2.8	22.6	3.2	1.6
21/07/2020	µg/m ³		6.0	6.2	35.7	8.1	2.6
22/07/2020	µg/m ³		10.8	7.3	44.7	12.2	3.6
23/07/2020	µg/m ³		11.7	7.6	48.7	13.2	4.7

MTW EPL Monitoring Data
FOR THE MONTH ENDING 31 July 2020

Date	Unit of Measure	Monitoring Frequency & Capture	Monitoring Point				
			Warkworth North (EPA ID # 9 - WML EPL 1376)	MTO Boundary (EPA ID # 13 - MTO EPL 1976)	Dragline Crossing (EPA ID # 10 - WML EPL 1376 & MTO EPL 1976)	Heavy Vehicle Bridge (EPA ID # 11 - WML EPL 1376 & MTO EPL 1976)	MTIE (EPA ID # 12 - WML EPL 1376 & EPA ID #19 - MTO EPL 1976)
24/07/2020	µg/m ³		22.8	12.6	56.3	17.0	7.6
25/07/2020	µg/m ³		16.4	6.9	23.2	9.2	3.7
26/07/2020	µg/m ³		6.1	1.2	5.6	2.7	0.5
27/07/2020	µg/m ³		0.7	1.0	12.4	2.0	1.1
28/07/2020	µg/m ³		0.5	1.6	6.9	1.3	0.5
29/07/2020	µg/m ³		2.2	3.7	14.5	5.1	2.5
30/07/2020	µg/m ³		7.3	3.2	27.6	8.0	#
31/07/2020	µg/m ³		12.0	5.9	19.4	7.5	3.3
Monthly Meaningful Data							
July	µg/m ³	Minimum*	0.5	0.7	5.6	1.3	0.5
July	µg/m ³	Mean*	8.0	6.2	32.7	8.4	3.6
July	µg/m ³	Maximum*	22.8	14.7	85.4	20.8	8.5
July	µg/m ³	Median*	6.8	5.7	31.3	7.8	3.1

24 hour data unavailable due to equipment or communications issue causing one or more missing 10 minute values

*Data calculated with missing 10 minute value(s) due to equipment or communication issue

MTIE denotes Mount Thorley Industrial Estate

3 SURFACE WATER

3.1 Mine Water Discharge Monitoring

MTW participates in the Hunter River Salinity Trading Scheme (HRSTS) and maintains two monitoring locations associated with this scheme.

MTW did not receive any discharge opportunities in the reporting period and no water was discharged as shown in **Table 2**. As such, no samples were collected during the reporting period as shown in **Table 3**.

TABLE 2: MINE WATER DISCHARGE MONITORING - VOLUME AND MASS LIMITS

Monitoring Location	Unit of measure	Volume/mass Limit	Volume/mass Discharged
Dam 1N Discharge / Point 1 (WML EPL 1376) Dam 1N Discharge Point	Megalitres per day	100	-
Dam 9S Discharge / EPL Point 4 (MTO EPL 1976) Discharge pipe from Dam 9	Megalitres per day	100	-

TABLE 3: MINE WATER DISCHARGE MONITORING- CONCENTRATION LIMITS

Discharge Point	Date	Pollutant	Unit of measure	Licence limits	No. of samples required by licence	No. of samples you collected and analysed
Dam 1N Discharge / Point 1 (WML EPL 1376) Dam 1N Discharge Point	N/A	Electrical Conductivity	microsiemens per centimetre	-	0	0
		pH	pH	6.5 - 9.0	0	0
		Total Suspended Solids	milligrams per litre	120	0	0
Dam 1N Discharge Turbidity Monitoring / Point 25 (WML EPL 1376) Continuous turbidity monitor	N/A	Turbidity	nephelometric turbidity units	-	0	0
Dam 9S Discharge / EPL Point 4 (MTO EPL 1976) Discharge pipe from Dam 9	N/A	Electrical Conductivity	microsiemens per centimetre	-	0	0
		pH	pH	6.5 - 9.0	0	0
		Total Suspended Solids	milligrams per litre	120	0	0

3.2 Water Quality Monitoring

MTW undertakes monitoring in accordance with Condition M2.3 of WML EPL 1376 and MTO EPL 1976 as detailed in Table 4. Monthly sampling occurred at MTO on 16 July 2020 and the data was obtained 10 August 2020. Sampling is undertaken on a quarterly basis at WML (typically in March, June, September and December), and as such no sampling was required in July 2020.

TABLE 4: WATER QUALITY MONITORING

Monitoring Location	Pollutant	unit of measure	Monitoring frequency required by licence	No. of samples required by licence	No. of samples collected and analysed	Value
W5 – Loders Creek / EPL Point 3 (MTO EPL 1976) Coal preparation plant access road bridge	Electrical Conductivity	microsiemens per centimetre	Once a month (min. of 4 weeks)	1	1	6410
	pH	pH units	Once a month (min. of 4 weeks)	1	1	8.3
	Total Suspended Solids	milligrams per litre	Once a month (min. of 4 weeks)	1	1	4
W1 – Hunter River / EPL Point 26 (WML EPL 1376)	Electrical Conductivity	microsiemens per centimetre	Once a quarter	0	0	-
	pH	pH units	Once a quarter	0	0	-
	Total Suspended Solids	milligrams per litre	Once a quarter	0	0	-
W2 – Hunter River / EPL Point 27 (WML EPL 1376)	Electrical Conductivity	microsiemens per centimetre	Once a quarter	0	0	-
	pH	pH units	Once a quarter	0	0	-
	Total Suspended Solids	milligrams per litre	Once a quarter	0	0	-
W3 – Hunter River / EPL Point 28 (WML EPL 1376)	Electrical Conductivity	microsiemens per centimetre	Once a quarter	0	0	-
	pH	pH units	Once a quarter	0	0	-
	Total Suspended Solids	milligrams per litre	Once a quarter	0	0	-
W5 – Loders Creek / EPL Point 29 (WML EPL 1376)	Electrical Conductivity	microsiemens per centimetre	Once a quarter	0	0	-
	pH	pH units	Once a quarter	0	0	-
	Total Suspended Solids	milligrams per litre	Once a quarter	0	0	-
WW5 – Dights Creek / EPL Point 30 (WML EPL 1376)	Electrical Conductivity	microsiemens per centimetre	Once a quarter	0	0	-

MTW EPL Monitoring Data
FOR THE MONTH ENDING 31 July 2020

Monitoring Location	Pollutant	unit of measure	Monitoring frequency required by licence	No. of samples required by licence	No. of samples collected and analysed	Value
	pH	pH units	Once a quarter	0	0	-
	Total Suspended Solids	milligrams per litre	Once a quarter	0	0	-
SW40 – Wollombi Brook Downstream / EPL Point 31 (WML EPL 1376)	Electrical Conductivity	microsiemens per centimetre	Once a quarter	0	0	-
	pH	pH units	Once a quarter	0	0	-
	Total Suspended Solids	milligrams per litre	Once a quarter	0	0	-
Wollombi Brook / EPL Point 32 (WML EPL 1376)	Electrical Conductivity	microsiemens per centimetre	Once a quarter	0	0	-
	pH	pH units	Once a quarter	0	0	-
	Total Suspended Solids	milligrams per litre	Once a quarter	0	0	-
Wollombi Brook Upstream / EPL Point 33 (WML EPL 1376)	Electrical Conductivity	microsiemens per centimetre	Once a quarter	0	0	-
	pH	pH units	Once a quarter	0	0	-
	Total Suspended Solids	milligrams per litre	Once a quarter	0	0	-

3.3 Effluent Quality Monitoring

Monitoring is undertaken in accordance with Condition M2.3 of WML EPL 1376 and MTO EPL 1976 as detailed in **Table 5**. Sampling is undertaken on a quarterly basis and as such no sampling was conducted in July 2020.

TABLE 5: EFFLUENT QUALITY MONITORING

Monitoring Location	Pollutant	unit of measure	Monitoring frequency required by licence	No. of samples required by licence	No. of samples collected and analysed	Value
North Pit North Crib Hut Envirocycle / EPL Point 14 (WML EPL 1376)	Faecal Coliforms	Colony forming units per 100 millilitres	Once a quarter	0	0	-
	pH	pH units	Once a quarter	0	0	-
Main Warkworth Staging Pond / EPL Point 15 (WML EPL 1376)	Faecal Coliforms	Colony forming units per 100 millilitres	Once a quarter	0	0	-
	pH	pH units	Once a quarter	0	0	-
Warkworth Admin Envirocycle / EPL Point 16 (WML EPL 1376)	Faecal Coliforms	Colony forming units per 100 millilitres	Once a quarter	0	0	-
	pH	pH units	Once a quarter	0	0	-
West Pit South Crib Hut Envirocycle / EPL Point 17 (WML EPL 1376)	Faecal Coliforms	Colony forming units per 100 millilitres	Once a quarter	0	0	-
	pH	pH units	Once a quarter	0	0	-
Warkworth Medical Centre Envirocycle / EPL Point 18 (WML EPL 1376)	Faecal Coliforms	Colony forming units per 100 millilitres	Once a quarter	0	0	-
	pH	pH units	Once a quarter	0	0	-
Dam 1S / EPL Point 18 (MTO EPL 1976)	Faecal Coliforms	Colony forming units per 100 millilitres	Once a quarter	0	0	-
	pH	pH units	Once a quarter	0	0	-

4 BLAST MONITORING

In accordance with the requirements of Conditions M7.1 (WML EPL 1376) and M8.1 (MTO EPL 1976), MTW maintains a network of blast monitors to measure airblast overpressure and ground vibration for all blasts carried out at MTW. Blast monitoring results are detailed in **Table 6** (Airblast Overpressure) and **Table 7** (Ground Vibration). The last date sampled was on 31 July 2020. The data was obtained on 1 August 2020.

TABLE 6: BLAST MONITORING (AIRBLAST OVERPRESSURE)

Blast ID	Date and Time	Unit of Measure	Monitoring Frequency & Capture	EPL Limits		Monitoring Point				
				95% of Blasts	100% of Blasts	Bulga Village EPA ID # 6 (EPL 1376) & EPA ID # 7 (EPL 1976)	Wambo Road EPA ID # 5 (EPL 1376) & EPA ID # 6 (EPL 1976)	Putty Rd MTIE EPA ID # 8 (EPL 1376) & EPA ID # 9 (EPL 1976)	Warkworth EPA ID # 4 (EPL 1376) & EPA ID # 5 (EPL 1976)	Wollemi Peak Road EPA ID # 7 (EPL 1376) & EPA ID # 8 (EPL 1976)
n43-bla-ptg7	1/07/2020 12:19	dB(L)	All Blasts 100%	115	120	97.3	96.7	90.5	101.0	93.0
w32-bfa-pr3	2/07/2020 11:10	dB(L)		115	120	112.3	107.7	112.3	102.0	111.2
n45-wba-pr4	3/07/2020 11:57	dB(L)		115	120	101.3	102.1	102.1	100.6	98.5
n47-rcc-pr3	3/07/2020 11:58	dB(L)		115	120	105.0	101.2	98.1	100.6	99.8
w32-gmb-whc-co1	3/07/2020 11:58	dB(L)		115	120	99.1	92.4	98.7	100.4	102.5
n36-bfb-j-co1	7/07/2020 11:46	dB(L)		115	120	90.2	91.8	90.0	111.3	81.7
w32-gmb-ps5	8/07/2020 12:41	dB(L)		115	120	92.7	96.5	89.0	96.3	87.2
w32-gmb-pr8	10/07/2020 12:08	dB(L)		115	120	97.5	96.1	96.8	99.4	95.1
w42-wya-pr2	10/07/2020 12:09	dB(L)		115	120	107.4	99.5	95.7	99.4	106.2

MTW EPL Monitoring Data
FOR THE MONTH ENDING 31 July 2020

Blast ID	Date and Time	Unit of Measure	Monitoring Frequency & Capture	EPL Limits		Monitoring Point				
				95% of Blasts	100% of Blasts	Bulga Village EPA ID # 6 (EPL 1376) & EPA ID # 7 (EPL 1976)	Wambo Road EPA ID # 5 (EPL 1376) & EPA ID # 6 (EPL 1976)	Putty Rd MTIE EPA ID # 8 (EPL 1376) & EPA ID # 9 (EPL 1976)	Warkworth EPA ID # 4 (EPL 1376) & EPA ID # 5 (EPL 1976)	Wollemi Peak Road EPA ID # 7 (EPL 1376) & EPA ID # 8 (EPL 1976)
I53-gma-pr2	10/07/2020 12:10	dB(L)		115	120	99.7	95.1	96.4	98.1	100.4
n36-bfa-md4	13/07/2020 11:08	dB(L)		115	120	97.8	99.9	106.1	109.7	94.4
I55-wnb-ps1	14/07/2020 14:23	dB(L)		115	120	96.1	102.5	102.8	92.2	104.0
w32-gmb-whc-co2	15/07/2020 12:10	dB(L)		115	120	101.1	111.1	112.1	102.9	106.2
n45-wba-ps6	16/07/2020 12:36	dB(L)		115	120	93.5	100.0	100.8	106.3	87.1
w32-gmb-pr7	16/07/2020 12:37	dB(L)		115	120	94.8	100.0	101.6	106.3	87.8
n39-gmd-ptg4	17/07/2020 11:38	dB(L)		115	120	90.1	102.2	94.5	107.6	94.0
n36-bfa-ps5	17/07/2020 11:41	dB(L)		115	120	95.8	99.4	100.2	94.7	80.1
I55-wnb-md1	20/07/2020 11:12	dB(L)		115	120	96.8	96.7	108.8	102.6	97.0
n45-wba-ps7	21/07/2020 12:18	dB(L)		115	120	100.0	101.9	91.8	98.6	100.8
w32-gmb-whc-co3	21/07/2020 13:16	dB(L)		115	120	97.7	105.6	97.6	107.1	95.4
w42-wyc-pr2	21/07/2020 13:17	dB(L)		115	120	100.5	105.6	94.7	100.9	97.7
w29-maa-j-co3	22/07/2020 11:31	dB(L)		115	120	97.2	96.0	95.4	98.5	93.0
n43-ble-pr4	23/07/2020 12:13	dB(L)		115	120	94.7	95.3	90.5	101.2	90.0

MTW EPL Monitoring Data
FOR THE MONTH ENDING 31 July 2020

Blast ID	Date and Time	Unit of Measure	Monitoring Frequency & Capture	EPL Limits		Monitoring Point				
				95% of Blasts	100% of Blasts	Bulga Village EPA ID # 6 (EPL 1376) & EPA ID # 7 (EPL 1976)	Wambo Road EPA ID # 5 (EPL 1376) & EPA ID # 6 (EPL 1976)	Putty Rd MTIE EPA ID # 8 (EPL 1376) & EPA ID # 9 (EPL 1976)	Warkworth EPA ID # 4 (EPL 1376) & EPA ID # 5 (EPL 1976)	Wollemi Peak Road EPA ID # 7 (EPL 1376) & EPA ID # 8 (EPL 1976)
n36-wwa-ptg1	24/07/2020 11:35	dB(L)		115	120	92.5	92.7	84.3	107.9	84.2
n45-wba-pr5	27/07/2020 11:23	dB(L)		115	120	109.3	104.4	109.1	108.0	103.2
n45-wba-ps8	29/07/2020 13:21	dB(L)		115	120	96.0	94.8	88.0	94.8	86.9
w32-whe-ps1	30/07/2020 13:47	dB(L)		115	120	95.7	88.2	92.3	89.0	89.3
w32-gmd-ptg3	31/07/2020 12:20	dB(L)		115	120	97.3	92.9	94.5	95.7	96.0
Monthly Meaningful Data										
Minimum	July	dB(L)		115	120	90.1	88.2	84.3	89.0	80.1
Mean	July	dB(L)		115	120	98.2	98.9	97.7	101.2	95.1
Maximum	July	dB(L)		115	120	112.3	111.1	112.3	111.3	111.2
Median	July	dB(L)		115	120	97.3	99.5	96.6	100.7	95.3

TABLE 7: BLAST MONITORING (GROUND VIBRATION)

Blast ID	Date and Time	Unit of Measure	Monitoring Frequency & Capture	EPL Limits		Monitoring Point				
				95% of Blasts	100% of Blasts	Bulga Village EPA ID # 6 (EPL 1376) & EPA ID # 7 (EPL 1976)	Wambo Road EPA ID # 5 (EPL 1376) & EPA ID # 6 (EPL 1976)	Putty Rd MTIE EPA ID # 8 (EPL 1376) & EPA ID # 9 (EPL 1976)	Warkworth EPA ID # 4 (EPL 1376) & EPA ID # 5 (EPL 1976)	Wollemi Peak Road EPA ID # 7 (EPL 1376) & EPA ID # 8 (EPL 1976)
n43-bla-ptg7	1/07/2020 12:19	mm/s	All Blasts 100%	5	10	0.07	0.17	0.03	0.17	0.06
w32-bfa-pr3	2/07/2020 11:10	mm/s		5	10	2.13	2.01	0.24	1.77	1.27
n45-wba-pr4	3/07/2020 11:57	mm/s		5	10	1.02	1.44	0.30	0.87	1.04
n47-rcc-pr3	3/07/2020 11:58	mm/s		5	10	1.02	1.10	0.09	0.59	1.04
w32-gmb-whc-co1	3/07/2020 11:58	mm/s		5	10	0.10	0.06	0.03	0.69	0.09
n36-bfb-j-co1	7/07/2020 11:46	mm/s		5	10	0.04	0.06	0.03	1.14	0.03
w32-gmb-ps5	8/07/2020 12:41	mm/s		5	10	0.60	0.64	0.21	0.74	0.60
w32-gmb-pr8	10/07/2020 12:08	mm/s		5	10	0.58	0.18	0.04	1.02	0.31
w42-wya-pr2	10/07/2020 12:09	mm/s		5	10	1.10	0.46	0.05	0.31	0.63
l53-gma-pr2	10/07/2020 12:10	mm/s		5	10	0.68	0.34	0.17	0.87	0.98
n36-bfa-md4	13/07/2020 11:08	mm/s		5	10	0.72	0.87	0.14	2.39	1.02
l55-wnb-ps1	14/07/2020 14:23	mm/s		5	10	0.69	0.37	0.13	0.29	0.79
w32-gmb-whc-co2	15/07/2020 12:10	mm/s		5	10	0.13	0.05	0.02	0.05	0.10

MTW EPL Monitoring Data
FOR THE MONTH ENDING 31 July 2020

Blast ID	Date and Time	Unit of Measure	Monitoring Frequency & Capture	EPL Limits		Monitoring Point				
				95% of Blasts	100% of Blasts	Bulga Village EPA ID # 6 (EPL 1376) & EPA ID # 7 (EPL 1976)	Wambo Road EPA ID # 5 (EPL 1376) & EPA ID # 6 (EPL 1976)	Putty Rd MTIE EPA ID # 8 (EPL 1376) & EPA ID # 9 (EPL 1976)	Warkworth EPA ID # 4 (EPL 1376) & EPA ID # 5 (EPL 1976)	Wollemi Peak Road EPA ID # 7 (EPL 1376) & EPA ID # 8 (EPL 1976)
n45-wba-ps6	16/07/2020 12:36	mm/s		5	10	2.97	1.27	0.30	1.75	1.93
w32-gmb-pr7	16/07/2020 12:37	mm/s		5	10	2.97	1.27	0.30	1.75	1.93
n39-gmd-ptg4	17/07/2020 11:38	mm/s		5	10	0.06	0.06	0.02	0.15	0.03
n36-bfa-ps5	17/07/2020 11:41	mm/s		5	10	0.54	0.39	0.06	1.46	0.48
l55-wnb-md1	20/07/2020 11:12	mm/s		5	10	2.06	0.49	0.11	0.33	3.01
n45-wba-ps7	21/07/2020 12:18	mm/s		5	10	0.60	0.58	0.09	0.51	0.73
w32-gmb-whc-co3	21/07/2020 13:16	mm/s		5	10	0.84	0.91	0.06	0.51	0.99
w42-wyc-pr2	21/07/2020 13:17	mm/s		5	10	0.84	0.91	0.06	0.45	0.99
w29-maa-j-co3	22/07/2020 11:31	mm/s		5	10	0.06	0.04	0.03	1.18	0.03
n43-ble-pr4	23/07/2020 12:13	mm/s		5	10	0.17	0.22	0.04	0.33	0.10
n36-wwa-ptg1	24/07/2020 11:35	mm/s		5	10	0.04	0.04	0.02	0.26	0.02
n45-wba-pr5	27/07/2020 11:23	mm/s		5	10	2.20	2.52	0.29	1.75	1.14
n45-wba-ps8	29/07/2020 13:21	mm/s		5	10	0.38	0.48	0.10	0.86	0.48
w32-whe-ps1	30/07/2020 13:47	mm/s		5	10	0.30	0.15	0.10	0.16	0.21

MTW EPL Monitoring Data
FOR THE MONTH ENDING 31 July 2020

Blast ID	Date and Time	Unit of Measure	Monitoring Frequency & Capture	EPL Limits		Monitoring Point				
				95% of Blasts	100% of Blasts	Bulga Village EPA ID # 6 (EPL 1376) & EPA ID # 7 (EPL 1976)	Wambo Road EPA ID # 5 (EPL 1376) & EPA ID # 6 (EPL 1976)	Putty Rd MTIE EPA ID # 8 (EPL 1376) & EPA ID # 9 (EPL 1976)	Warkworth EPA ID # 4 (EPL 1376) & EPA ID # 5 (EPL 1976)	Wollemi Peak Road EPA ID # 7 (EPL 1376) & EPA ID # 8 (EPL 1976)
w32-gmd-ptg3	31/07/2020 12:20	mm/s		5	10	0.17	0.10	0.03	0.84	0.10
Monthly Meaningful Data										
Minimum	July	mm/s		5	10	0.04	0.04	0.02	0.05	0.02
Mean	July	mm/s		5	10	0.82	0.61	0.11	0.83	0.72
Maximum	July	mm/s		5	10	2.97	2.52	0.30	2.39	3.01
Median	July	mm/s		5	10	0.60	0.43	0.08	0.72	0.62

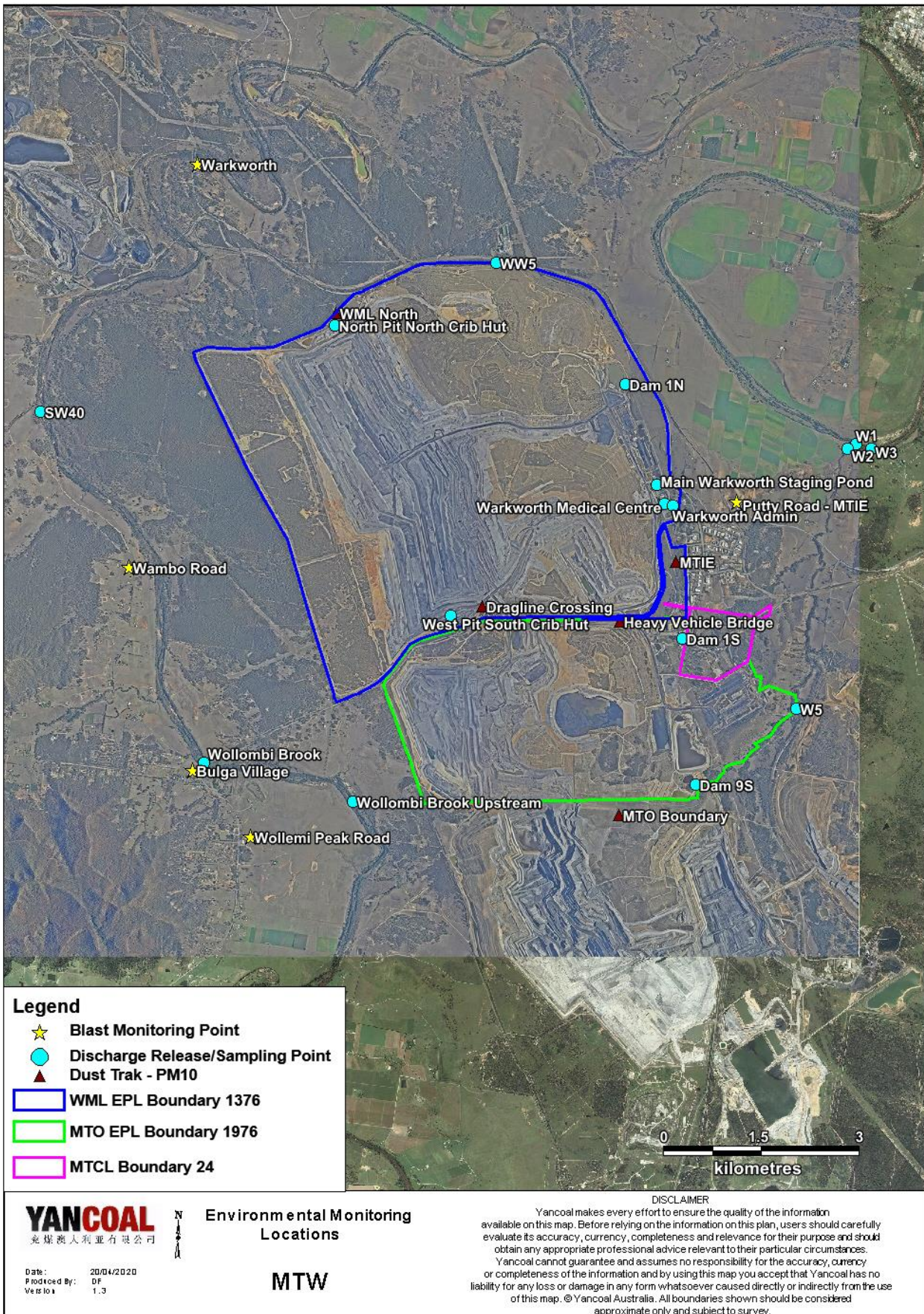


Figure 1 : Mount Thorley Warkworth Environmental Monitoring Locations