

**Minutes of the Mount Thorley Warkworth
Community Consultative Committee Meeting Q1 2021**

Date: Wednesday 24 February 2021

Location: Mount Thorley Warkworth Boardroom

Time: 2pm – 3:30pm

Attendees

Colin Gellatly (Chair)

David Bennett (DB)

Gary Mulhearn (GM)

Olivia Lane (OL)

Ian Hedley (IH)

Toni Silk (TS)

Cr. Hollee Jenkins (HJ)

Dr. Neville Hodkinson (NH)

Barb Brown (BB)

Myffy Doyle (MD)

Role

Independent Chairperson MTW CCC

MTW Acting General Manager

MTW Environment & Community Manager

MTW Environment & Community Coordinator

Community Representative

Community Representative

Singleton Council (had to leave prior to end of meeting)

Stakeholder Rep - Singleton Shire Healthy Environment Group

Community Representative (attended remotely but left during course of meeting with technical difficulties)

Singleton Council – VPA Project Officer (attended until first item of Business Arising)

Apologies

Adrian Gallagher

Stewart Mitchell

Community Representative

Community Representative

1. WELCOME

- CG opened the meeting and welcomed CCC members.

2. APOLOGIES

- Advised and recorded. Alternate members were contacted but unable to attend.
- CG noted the resignation of community representative, John Lamb and advised a process would be undertaken via the Department of Planning, Environment and Industry (DPIE) to appoint a current alternate community member as John's replacement.

ACTION 1: Independent Chair to organise with the Department of Planning, Industry and Environment (DPIE) the appointment of a replacement for John Lamb's position as a community representative on the MTW CCC.

- CG advised the CCC of the resignation of long standing minute taker, Sarah Purser as she moves on to other ventures. CG made acknowledgement and appreciation for Sarah's contribution during her 11 years of service as minute taker to the MTW CCC.

- CG advised that MTW would take the minutes during the current meeting and that the format of minutes would change to a briefer format compared to the detailed dialogue previously recorded in minutes. CCC Members in attendance were given the opportunity to object to this change.
- CG advised that MTW had received correspondence from DPIE regarding a community complaint surrounding the timeliness of when the CCC Minutes were becoming available to the public on the MTW website. CG acknowledged, that this delay in part, was due to the style of detailed minutes previously being taken.
- GM advised that following the complaint, DPIE had directed MTW to the DPIE '*Community Consultative Committee Guideline – State Significant Projects January 2019*' (CCC Guidelines), in relation to the timing requirements for circulating draft minutes, and finalising / publishing the meeting minutes. GM advised that moving forward MTW would be working hard to meet the required timeframes sent out in the CCC Guidelines.
- HJ commented that historically there may have been a motion moved to change the terms of reference to have a more comprehensive style of minutes and queried whether a similar process was appropriate given the proposed change to the style of minutes recorded.
- CG advised that the CCC did change to audio recording of the meetings due to disagreement about content / issues at historic meetings.
- GM indicated that the terms of reference are the DPIE's current CCC Guideline. GM advised there was a declaration that new members were required to sign to accept the terms of reference when they are endorsed into the committee. CG confirmed this was correct.
- HJ advised that potentially new guidelines have been introduced since some of the original members joined. GM advised that MTW could circulate this document and have all existing members sign the relevant declarations accepting the terms of reference.

ACTION 2: MTW to circulate the *Community Consultative Committee Guideline – State Significant Projects January 2019* set out by DPIE and request existing members who haven't done so to please sign the relevant declarations in accordance with the current CCC guidelines.

3. DECLARATION OF PECUNIARY INTEREST / CONFLICT OF INTEREST

- **Standing Declarations:** Col advised that he is engaged by MTW to provide the services of Independent Chairperson.
- No additional declarations were made.

4. BUSINESS ARISING

Action Items arising from the 25 November 2021 Meeting

Refer to **attached** CCC presentation for previous actions, and relevant response / update made by MTW.

- **Note on Action Item 9** - Myffy Doyle (MD), Singleton Council's Voluntary Planning Agreement (VPA) Officer attended the Q1 2021 MTW CCC meeting to provide an update on the VPA as the first item in Business Arising. The presentation provided by MD is **attached** to these minutes. General discussion was had between CCC members at the conclusion of the presentation. MD then departed the meeting.

5. CORRESPONDENCE

- 23/12/2020 - MTW Independent Environmental Audit 2020
- 21/01/2021 - CCC Meeting Minutes Endorsed by the Chair – 25 November 2020
- 05/02/2021 - Bulga Service Station Update
- 12/02/2021 - Agenda & Business Papers

6. CONFIRMATION OF THE PREVIOUS MEETING'S MINUTES

Confirmed at today's meeting.

7. PROPONENT REPORTS AND OVERVIEW OF ACTIVITIES

MTW Operations

Refer to presentation

- DB advised that in WML normal load and haul operations have continued. In MTO Dragline 102 completed its final production dig in MTO December 2020 and associated coal was mined in early January 2021.
- IH queried what would happen to the dragline currently in the MTO pit. DB advised that Dragline 102 would most likely be decommissioned after it completed work in MTO.
- GM noted that in WML the construction of the water management sediment basins and catch drains has continued in early 2021. This project is occurring ahead of mining in both North and West Pit, nearing completion.

Exploration

Refer to presentation

- GM advised that exploration activities have continued within the current leases in 2021. Some exploration activities are visible from Putty Road.

North Out Of Pit Dam (NOOP)

Refer to presentation

Monitoring

Refer to presentation for data - January to December 2020

- OL presented equipment downtime / Community Response Officer noise assessments and operational changes for nights above noise limits which generated a general discussion.
- GM noted that in all cases where noise levels were measured at above noise limits, MTW brought noise levels down under the noise limit within the 75 minute time criteria required by our management plan. GM advised that in those cases the CRO's feed directly back to the Open Cut Examiner and operational changes are made to reduce how much equipment is there or the location of it, to reduce the noise level.
- IH noted his recent experience with noise from the high dumping activity occurring in MTO and queried the intent the dump in South Pit at night. General discussion was had about the current dumping activities at MTO.

Rehabilitation / Disturbance 2020-2021

Refer to presentation for completed and planned rehabilitation.

Vertebrate Pest Management 2020 - 2021

Refer to presentation

- General discussion around the increase in foxes was discussed among various members

Weed Management 2020

Refer to presentation

Northern and Southern Biodiversity Area (BA) Planting Program 2020;

Refer to presentation

MTW Biodiversity Area Fuel Load Assessment 2020;

Refer to presentation

Historic & Cultural Heritage Management

Refer to presentation

Business Papers

Business papers were provided to CCC members prior to the meeting, including a summary of; Complaints, Incidents, Environmental Monitoring, Rehabilitation, Website Uploads and Community Investment Update. MTW MEMR for September, October, November 2020 were provided. December 2020 to be provided at a later date.

- NH queried how the groundwater trigger tracking table in the quarterly MEMR's tied into the movement of water transfer across sites. GM provided clarification on this.
- NH queried a high PM10 Air Quality result received at the Warkworth TEOM in the November MEMR. GM referred Neville to the section of the MEMR in relation to the investigation conducted for this high result and advised on the process of such investigations.

Management Plans / Reporting

- Letter received from DPIE on 1/12/20 in relation to MTW's Independent Environmental Audit which advised MTW's response to audit recommendations are satisfactory.
- The Resources Regulator advised by letter 15/12/20 that no Mining Operations Plan amendment is required to bury Mixed Waste Organic Outputs that are stockpiled at MTW provided this is done in accordance with the POEO (Waste) Regulation amendment.
- Annual Environmental Review report is due at end of March 2021.

8. OTHER AGENDA ITEMS

Nil

9. GENERAL BUSINESS

General Business MTW - Underground Project Aspects and EIS Commencing

Refer to presentation

- GM advised that an Environmental Impact Statement (EIS) for the MTW Underground Project is currently commencing and will take approximately one year to complete. Some early works for specialist field studies have already commenced (i.e. ecology and soil). Consultation with various stakeholders from government, community, cultural heritage groups is a key part of the process.
- GM advised Social Impact Assessment (SIA) will commence in coming months. SIA will involve Yancoal MTW and our social impact consultant (Square Peg Social Performance) developing the framework for the SIA. GM advised some members of the CCC will be contacted as part of this process, and importantly, there will be many opportunities for consultation and feedback throughout the EIS process and the SIA is only one part of that process.
- Preliminarily aspects of the underground project design were discussed with CCC members.
 - Longwall panels will be located beneath existing MTW open cut operations.
 - Project design aims to limit subsidence impacts to existing MTW disturbance areas.
 - Approximately 22 years of underground mining.
 - No increase in rail movements required (Mt Thorley open cut no longer producing coal).
 - No change to open cut mining areas or workforce.
- GM advised that further details including layouts of the proposed underground project would be provided at subsequent CCC meetings.

General Business MTW - Community Support Program (CSP)

Refer to presentation

- GM advised the MTW Community Support Program has been completed for 2020. Many events being supported in 2020 have been postponed until 2021 due to COVID-19. GM provided detail of the organizations supported in 2020 through the CSP.
- GM advised the current CSP round closed on 6 November 2020, MTW heavily advertised this funding and received 11 applications, MTW will assess those through the early part of 2021 and advise the successful applicants in the coming months.

General Business MTW – Site Tour & Dispatch Viewing

- MTW noted that the mine site tour planned to coincide with the February 2021 CCC meeting did not occur due to low availability of CCC Community members to attend. GM advised that MTW will again organise a site tour for the next CCC meeting.
- IH and TS visited the MTW Dispatch area after conclusion of the CCC meeting.

General Business - CCC Members

- TS advised that she was the owner of the Bulga Service Station/ Shop and that the settlement and change of ownership to Yancoal had occurred. TS thanked Yancoal for the process and how it was handled during this transition in January 2021. TS also advised that she received community feedback in relation to the sale of the shop and that the following two items were raised by community:
 - Potential for the Bulga economic activity to become monopolized if there is a single business operator.
 - The fate of the 'Birdcage' structure at the Service Station site – local feedback indicates the structure was initially a local donation by the community and if it is required to be demolished for any reason, they wished to see it dismantled in a way that it could be stored and re-erected at a new location in the future. Community feedback suggested that the Birdcage is a significant landmark and social meeting place for the Bulga community.
- IH advised that at a recent Bulga Milbrodale Progress Association (BMPA) meeting it was raised whether there is a walkway planned to be constructed between the recreational campground and the Bulga shop / tavern. A general discussion about this idea in relation the landscape concept plans for Bulga occurred.
- IH advised that there had be little to no improvements with the phone reception at Bulga and in surrounding suburbs, since previous discussion during the Q3 MTW CCC Meeting in August 2020. IH advised that he had been in contact with Telstra on behalf of the local community and was slowing making progress with this matter. General discussion surrounding this matter occurred between IH and GM in relation to the potential steps of how to move forward with this matter.

10.NEXT MEETING

Next CCC Meeting: Wednesday, 26 May 2021 2:00pm

MEETING CLOSED ~3:30pm.

SUMMARY OF ACTIONS

- ***ACTION 1: Independent Chair to organise with the Department of Planning, Industry and Environment (DPIE) the appointment of a replacement for John Lamb's position as a community representative on the MTW CCC.***
- ***ACTION 2: MTW to circulate the Community Consultative Committee Guideline – State Significant Projects January 2019 set out by DPIE and request existing members sign the relevant declarations in accordance with the current CCC guidelines.***



Mount Thorley Warkworth (MTW)

Community Consultative
Committee (CCC)

Wednesday 24 February 2021

Time:

2pm – 4pm

Location:

Warkworth Office Boardroom

and Teleconference

Independent Chairperson:

Col Gellatly

Minutes:

MTW - Olivia Lane

Reaching new horizons together



Agenda

1. Welcome (Col)
2. Apologies (Col)
3. Declaration of pecuniary interests / conflicts of interest (Col)
4. Business Arising (Col)
5. Correspondence (Col)
6. Confirmation of the previous meeting's minutes (Col)
7. Proponent reports and overview of activities
 - Progress of the project, environmental monitoring and performance, community complaints
8. Other agenda items
9. General business
10. Next meeting

1. Welcome



Warkworth Mining Limited EMERGENCY EVACUATION PROCEDURES

ACTION TO BE TAKEN ON DISCOVERING A FIRE OR OTHER EMERGENCY

1. ALERT PERSONS NEARBY OF THE SITUATION.
2. EXTINGUISH THE FIRE IF ABLE TO DO SO WITH SAFETY
3. IF NOT ABLE TO PERFORM 2) NOTIFY RECEPTION OF THE EMERGENCY
3. FOLLOW THE EVACUATION PROCEDURES.

ACTION TO BE TAKEN TO EVACUATE THE BUILDING.

1. FOLLOW INSTRUCTIONS OF THE WARDENS.
2. CLOSE YOUR OFFICE DOOR AND TAKE THIS SIGN WITH YOU.
3. WALK TO THE NEAREST EXIT - DO NOT RUN.
4. PROCEED TO THE EMERGENCY MUSTER POINT ABOVE THE FIRE DAM
4. DO NOT RETURN TO WORK AREA FOR ANY REASON.

Agenda

1. Welcome (Col)
2. Apologies (Col)
3. Declaration of pecuniary interests / conflicts of interest (Col)
4. Business Arising (Col)
5. Correspondence (Col)
6. Confirmation of the previous meeting's minutes (Col)
7. Proponent reports and overview of activities
 - Progress of the project, environmental monitoring and performance, community complaints
8. Other agenda items
9. General business
10. Next meeting

Apologies

Apology - Stewart Mitchell, Adrian Gallagher

Alternate members – Denis Maizey, Graeme O'Brien contacted but were unable to attend.

Agenda

1. Welcome (Col)
2. Apologies (Col)
3. Declaration of pecuniary interests / conflicts of interest (Col)
4. Business Arising (Col)
5. Correspondence (Col)
6. Confirmation of the previous meeting's minutes (Col)
7. Proponent reports and overview of activities
 - Progress of the project, environmental monitoring and performance, community complaints
8. Other agenda items
9. General business
10. Next meeting

3. Declaration of pecuniary interests / conflicts of interest

All members must declare interests.

These declarations should include any pecuniary or other interest (including any payment, gift or benefit) intended or likely to influence - or that could be reasonably perceived by an impartial observer as intended or likely to influence - the member to:

- act in a particular way (including making a particular decision)
- fail to act in a particular circumstance
- otherwise deviate from the proper exercise of their duty as a member.

Examples of pecuniary or other interests include holding shares in an entity carrying out the project, holding a private contract with the proponent, holding voluntary acquisition or mitigation rights under the proponent's consent, or receiving sitting fees or payments of personal expenses from the proponent; and if the member represents a stakeholder group, if the stakeholder group has received funding or a grant from the proponent.

Source: Community consultative committees Guidelines (State Significant Projects), January 2019.

Agenda

1. Welcome (Col)
2. Apologies (Col)
3. Declaration of pecuniary interests / conflicts of interest (Col)
4. **Business Arising (Col)**
5. Correspondence (Col)
6. Confirmation of the previous meeting's minutes (Col)
7. Proponent reports and overview of activities
 - Progress of the project, environmental monitoring and performance, community complaints
8. Other agenda items
9. General business
10. Next meeting

4. Business Arising

Action No.	Action	Response/ Update
1	In response to a concern raised by Ian, MTW to address trucks servicing the Loders Pit drainage filter bed construction being parked up on a corner of the MTIE as in wet weather they had been tracking wet clay down onto the road causing a dust concern.	MTW immediately investigated the issue. The following actions were completed: -the drivers received communications on this issue and were advised to find alternate areas to temporarily park if required. -the truck deliveries for the project finish the following day (27/11/20). -the road area identified with clay/dust was cleaned up the following week.
2	In response to a query from Neville, MTW to provide a schematic/diagram showing how water from the old Lemington Underground Mine and surplus water is shared between MTW and neighbouring mines e.g. HVO, Bulga Coal and Wambo.	Update provided on following slide

MTW Water Transfers

- MTW is permitted to transfer water to and from Hunter Valley Operations, Bulga mine and Redbank Power Station by development consents SSD-6464 and SSD-6465.
- The Lemington Underground Bore is used to transfer water from the former Lemington Underground mine.

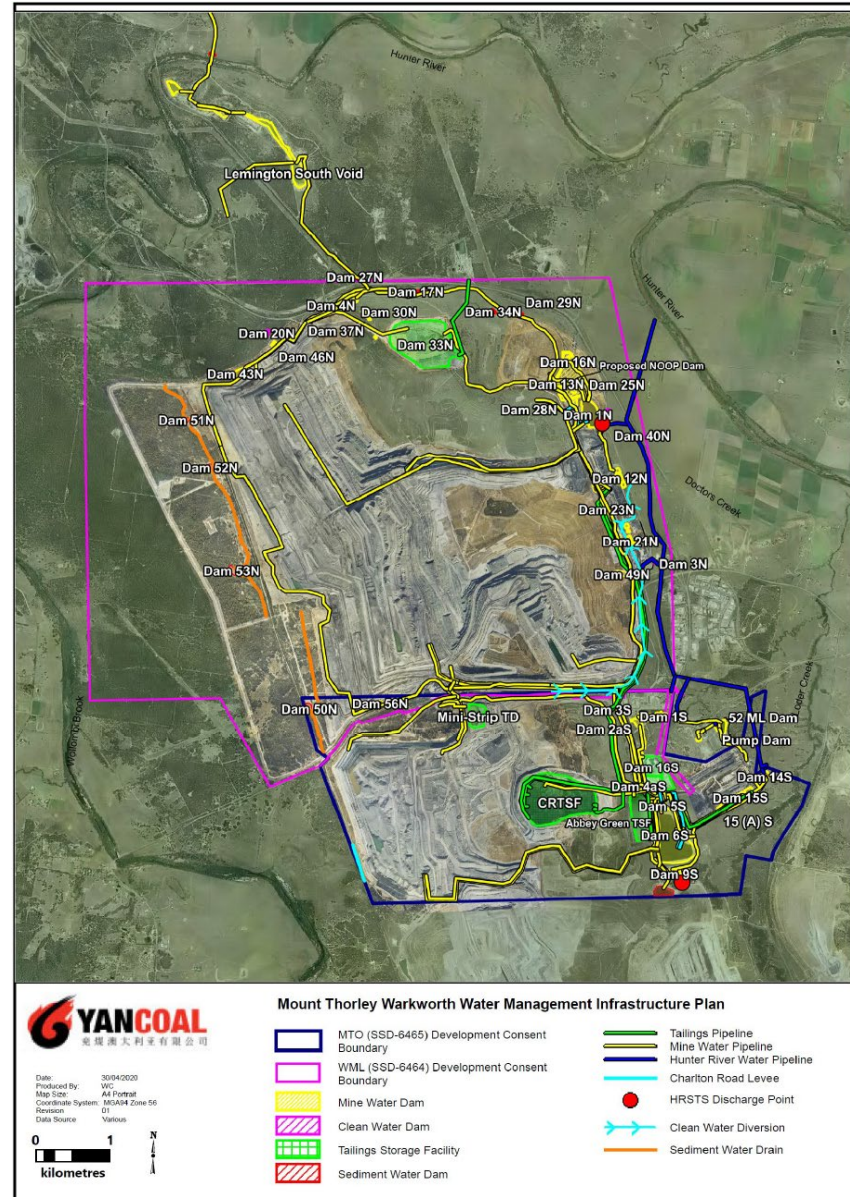


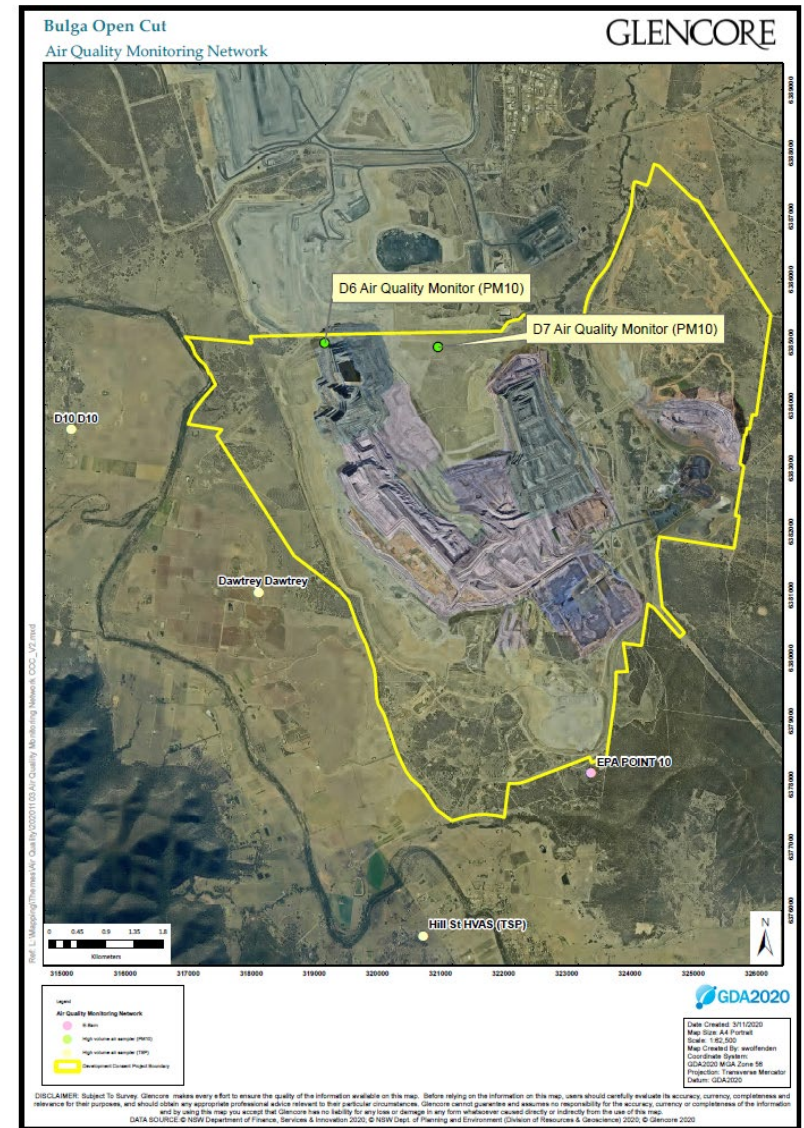
Figure 2 – MTW Water Management Infrastructure Plan

4. Business Arising

Action No.	Action	Response/ Update
3	Gary to liaise with MTW's Monitoring Specialist to ascertain if Bulga Coal have provided advice on the potential relocation of their boundary monitoring.	Update provided on following slide (12)
4	In response to a query from Barb, MTW to advise the representatives that had been in attendance when Aboriginal Artefacts were collected i.e. Aboriginal parties, Archaeologist.	Update provided on following slide (13)

Bulga Boundary Air Quality Monitoring

- Bulga Surface Operation are currently trialling an additional air quality monitor (D6) to the west of their monitor (D7), to determine if dust levels were comparable between the two locations.
- The position of the MTW owned monitor, which is adjacent to D7, was selected (and approved in the MTW Air Quality Management Plan), because it is downwind of MTO's dumps during a prevailing north westerly wind, is elevated and is not in the active mine area (where it can be affected by very localised dust generation from nearby passing trucks etc. that may not be representative of dust leaving MTW).



AHMP - Confidentiality Requirements

- There are confidentiality requirements within the approved Aboriginal Heritage Management Plan, which was prepared in consultation with Registered Aboriginal Parties (provided in Section 26, MTW AHMP). Confidentiality extends to works undertaken under an AHMP Terms of Reference (ToR).
- Salvage programs are undertaken under an AHMP Terms of Reference. MTW use an informal rotating roster to engage representatives from Registered Aboriginal Parties for works under AHMP ToR.

Aboriginal Heritage Management Plan
Mount Thorley Warkworth

26. Confidentiality

The following information is confidential information:

- information (including but not limited to any reports, correspondence, photographs, data or technical specifications provided verbally, in writing or digitally) provided by, or compiled under a relevant ToR for the purposes of developing this AHMP, or as required by this AHMP; and
- information concerning:
 - Yancoal or any Related Body Corporate,
 - MTW,
 - Yancoal's operations, or
 - any Aboriginal Cultural Heritage, Significant Objects or Significant Places.

Yancoal will not disclose any of the confidential information referred to in this section except:

- to officers, employees, members, directors, servants, agents, contractors and sub-contractors of Yancoal whose duties require such disclosure;
- to members of the Aboriginal community, through the auspices of the CHWG, where information regarding Aboriginal cultural heritage sites has been requested;
- to Yancoal's accountants, technical advisors, legal advisors, auditors or other professional advisers, or to Yancoal's financiers or to a recognised stock exchange on which a party are listed;
- to the extent necessary to comply with any Applicable Laws, or where disclosure is required by any Applicable Laws;
- where disclosure is necessary in performing obligations or enforcing rights under this AHMP;
- to the extent that such information is already part of the public domain otherwise than by breach of this section;
- as expressly permitted under this AHMP;
- where Yancoal is required to meet internal governance or decision making processes in relation to developing, authorising, implementing or operating this AHMP;
- where disclosure of the information is required to comply with any requirement of any Government Agency or other regulatory body (including the Australian Stock Exchange) and Yancoal uses its reasonable endeavours to minimise such disclosure;
- for any due diligence study by a prospective assignee; or
- in defending any legal action where Aboriginal Cultural Heritage is relevant.

Yancoal shall take all steps reasonably necessary to ensure that the confidential information referred to in this section is known only to such persons as may reasonably require knowledge thereof in the course of their duties or functions and, to the extent permitted by law, require any person to whom it intends to disclose such information (who is not otherwise under a statutory, professional or contractual duty to keep such information or data confidential) to give an undertaking to keep such information confidential.

4. Business Arising

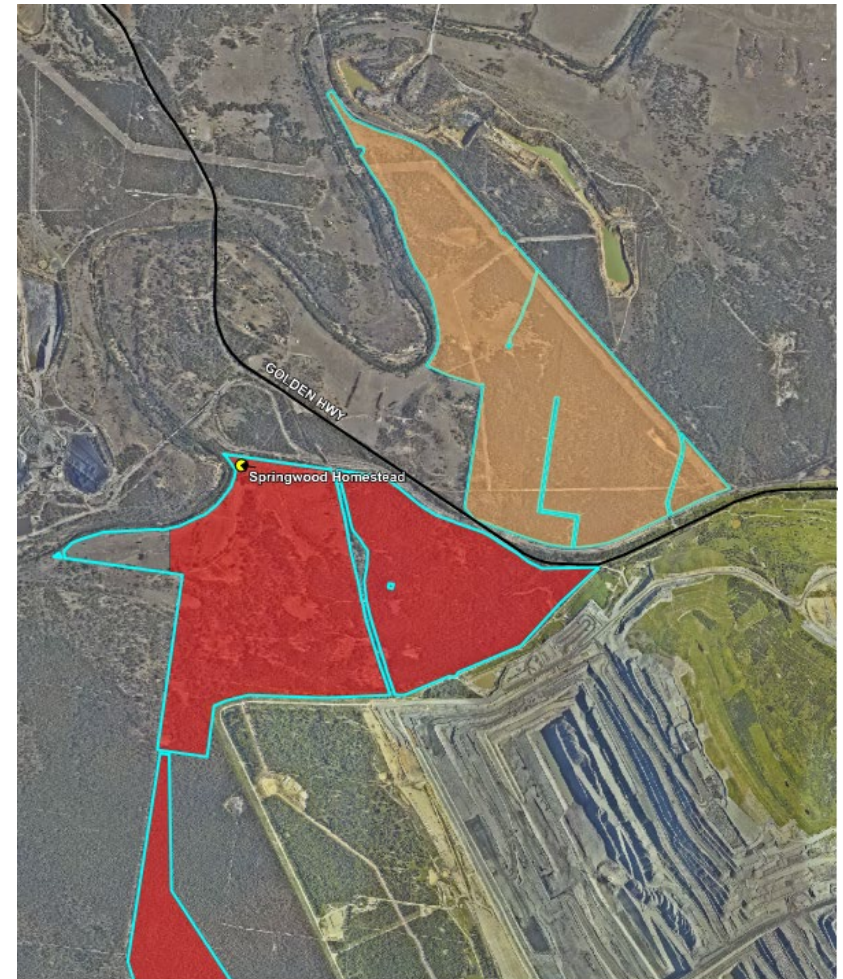
Action No.	Action	Response / Update
5	MTW to share their Independent Environmental Audit Report with the CCC upon finalisation.	A copy of the IEA final report and recommendations was sent to CCC members via email 23/12/2020
6	MTW to advise the value of their Rehabilitation Cost Estimate (RCE) that has been in place prior to the RCE update that is currently being assessed by the Resources Regulator.	Assessed Deposit (based on RCE submitted by MTW) determined by Resources Regulator on 29 January 2019: WML: ~\$81 M MTO: ~\$54.5 M

4. Business Arising

Action No.	Action	Response / Update
7	MTW to seek more detail from Barb around her enquiry about what conditions there may be in MTW's Development Consent that could be identified as being in place to reduce cumulative health impacts.	GM provided email to Barb Brown (18/02/2021) with copies of the WML and MTO development consents. The consents do not contain specific conditions regarding cumulative health impacts. Any cumulative items in development consents are instead about managing air quality impacts, which we have included in our Air Quality Management Plan. For health, the consents refer to a "Mine Dust and You Fact Sheet" on the NSW Health website (link to the fact sheet was provided in the email). GM advised Barb could contact with any further queries after reviewing the information.
8	In response to a query from Neville, MTW to provide an overview on the Springwood Homestead in relation to the subdivision of land between MTW and Hunter Valley Operations.	Update provided on following slide (16)

Springwood Homestead

- Springwood homestead is within the Southern **Biodiversity** Area (SBA3) and Wollombi Brook Aboriginal Cultural Heritage Conservation Area (WBACHCA). This area is not part of any subdivision. Refer to the Springwood homestead location Map showing the subdivision area (SBA1) north of the Golden Highway.



MTW



Springwood Homestead Location Map

- Springwood Homestead
- Southern Biodiversity Area
- WBACHCA
- Land to be subdivided and remain WML Land
- Golden HWY

Date: 03/02/2021
Produced By: JB
Map Scale: A4 Portrait
Coordinate System: MGA 2020 Zone 56
Revision: 01
Data Source: Various

0 500
meters

4. Business Arising

Action No.	Action	Response / Update
9	In response to feedback from Ian; MTW VPA to be added as a standing subject matter for the MTW CCC. As a first step Col asked MTW to invite Singleton Council Project Officer - Voluntary Planning Agreement, to the CCC Meeting (24/02/2021) to provide an update on the progress of the MTW VPA for community.	Myffy Doyle – Project Officer VPA, Singleton Council in attendance to provide an update.
Carried forward	MTW to organise a Site Tour to assist members understand the mine layout and visit to MTW's Dispatch	<p>Complete. MTW made arrangements for a site tour and dispatch viewing for the Q1 2021 meeting on 24/2/21 and invited all CCC members. Ian Hedley was the only CCC member able to attend this tour. Given availability of CCC members the site tour did not go ahead and MTW will again organise a site tour for next CCC meeting.</p> <p>Ian and Toni Silk visited MTW Dispatch after conclusion of the CCC meeting.</p>

Agenda

1. Welcome (Col)
2. Apologies (Col)
3. Declaration of pecuniary interests / conflicts of interest (Col)
4. Business Arising (Col)
5. **Correspondence (Col)**
6. Confirmation of the previous meeting's minutes (Col)
7. Proponent reports and overview of activities
 - Progress of the project, environmental monitoring and performance, community complaints
8. Other agenda items
9. General business
10. Next meeting

5. Correspondence

- MTW Independent Environmental Audit 2020 (23/12/2020)
- CCC Meeting Minutes Endorsed by the Chair – 25 November 2020 (21/01/2021)
- Bulga Service Station Update (05/02/2021)
- Agenda & Business Papers (12/02/2021)

Agenda

1. Welcome (Col)
2. Apologies (Col)
3. Declaration of pecuniary interests / conflicts of interest (Col)
4. Business Arising (Col)
5. Correspondence (Col)
6. Confirmation of the previous meeting's minutes (Col)
7. Proponent reports and overview of activities
 - Progress of the project, environmental monitoring and performance, community complaints
8. Other agenda items
9. General business
10. Next meeting

Agenda

1. Welcome (Col)
2. Apologies (Col)
3. Declaration of pecuniary interests / conflicts of interest (Col)
4. Business Arising (Col)
5. Correspondence (Col)
6. Confirmation of the previous meeting's minutes (Col)
7. **Proponent reports and overview of activities**
 - Progress of the project, environmental monitoring and performance, community complaints
8. Other agenda items
9. General business
10. Next meeting

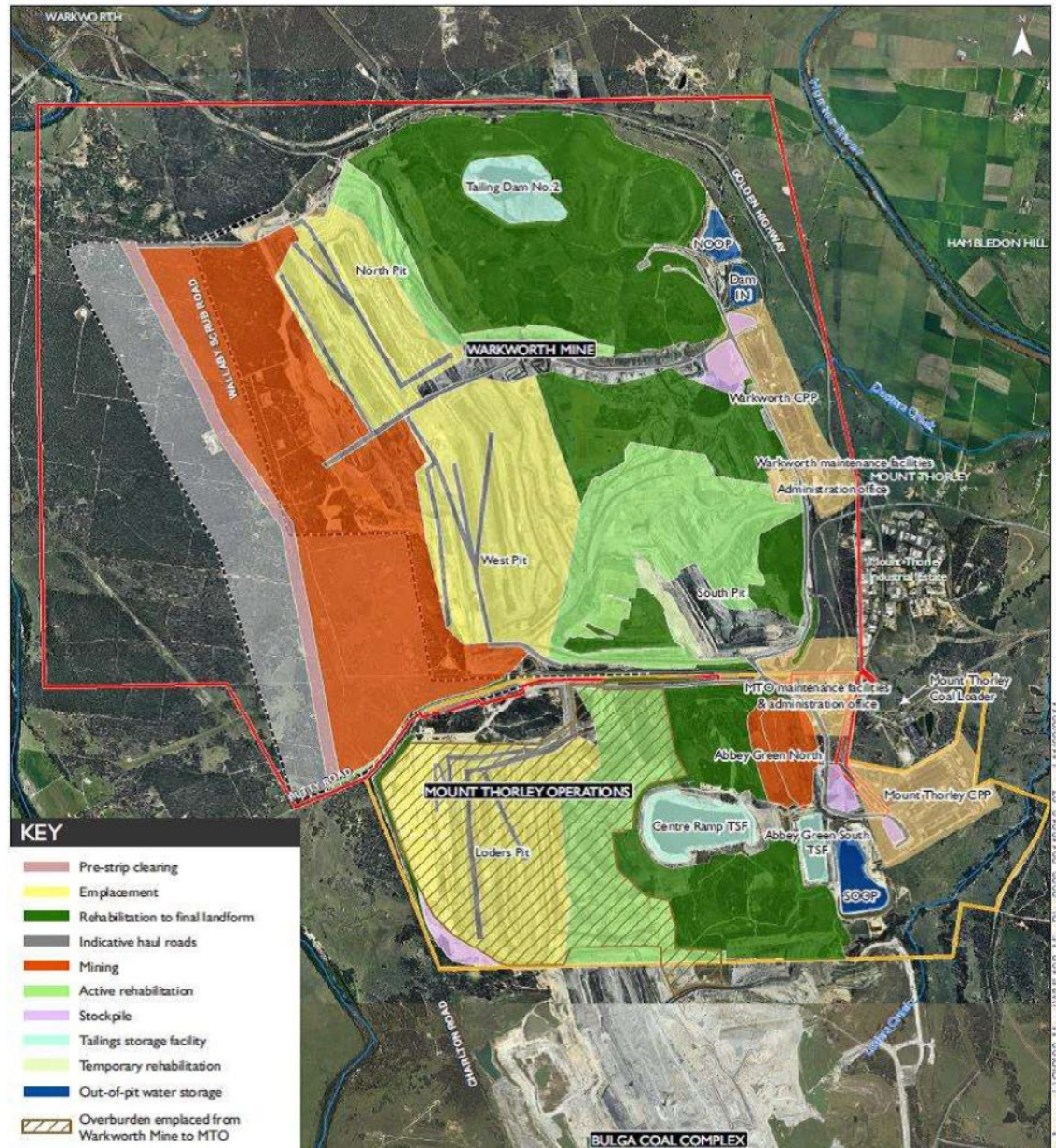
Exploration

- Exploration activities have continued within the current leases, and will continue in 2021.
- Some exploration activities are visible from Putty Road



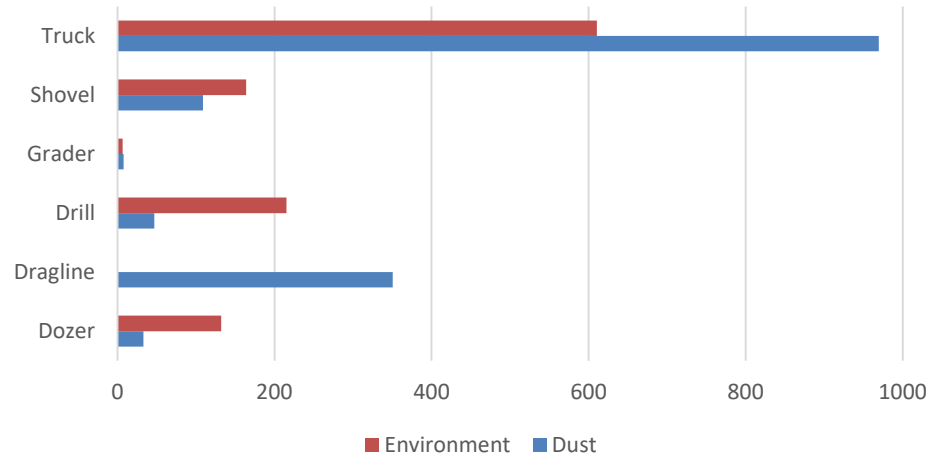
MTW Operations – NOOP Dam

- NOOP is an approved dam in Warkworth Continuation Project development consent SSD-6464 and will provide improved water security / balance position at MTW.
- Infrastructure and test blasting initially completed in 2019. Some facilitating infrastructure and preparation will continue in 2021.
- North Out Of Pit (NOOP) main dam construction is planned within next 2 years.



MTW Operations

2020 Operational Downtime YTD



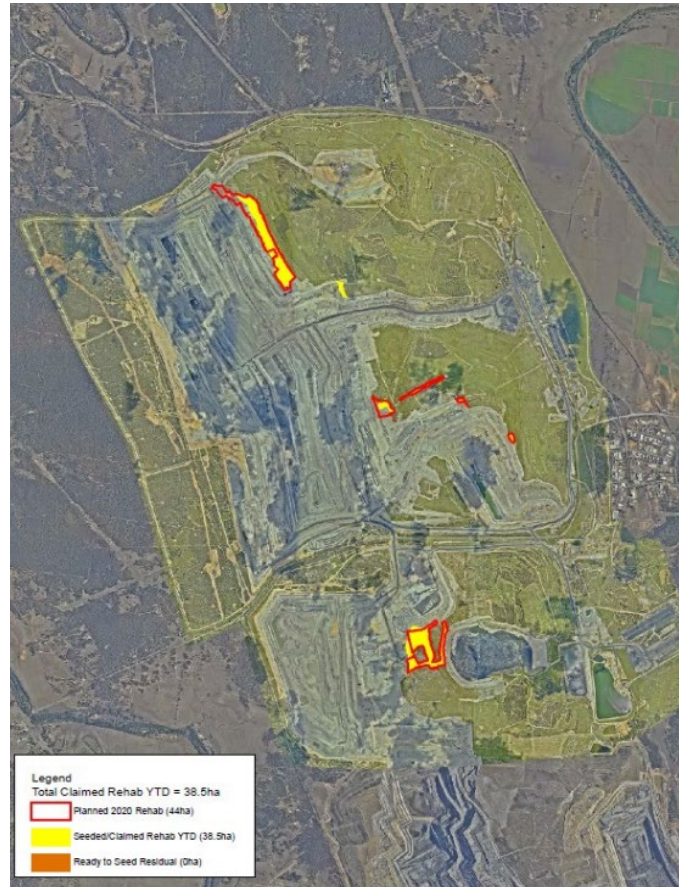
MTW Noise Monitoring YTD

	# CRO Assessments	# Individual assessment above trigger	# Nights above trigger
2020	7510	72	42
2019	8023	93	45
2018	6909	43	22
2017	5990	18	10

Rehabilitation/ Disturbance 2020

Rehabilitation reforecast for 2020 - 44Ha seeded (shown in red).

- Progress to end of December:
 - Shaped = 44.3ha
 - Seeded = 38.5ha
 - Ready to Seed (Residual) = 13.3ha
- Disturbance completed to the end of December totals 50.6ha and is mainly associated with clearing ahead of mining in West and North Pit.

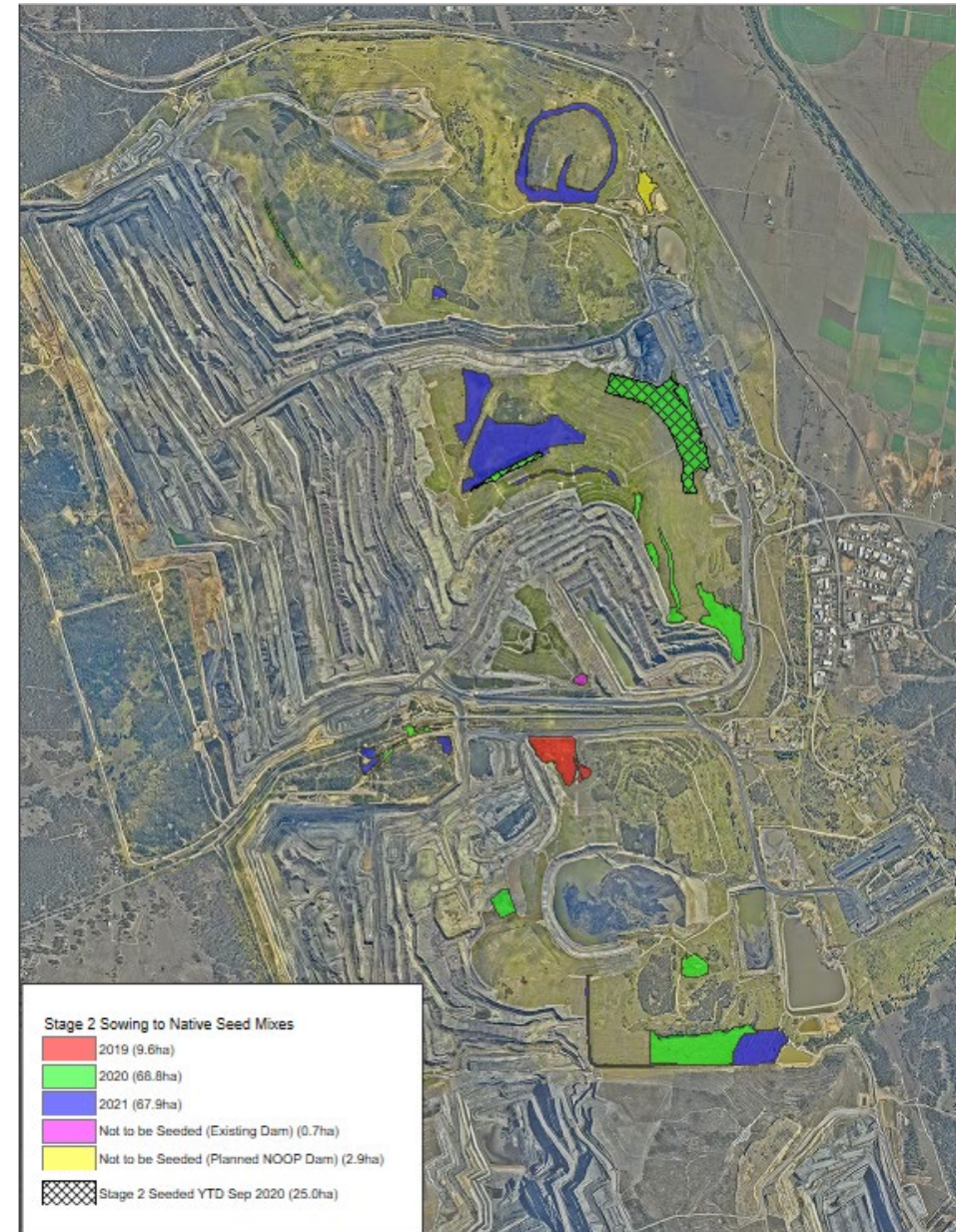


MTW Operations – Rehabilitation Target 2021

The rehabilitation stretch target for 2021 is 41ha, consisting of;

- 35ha Mining Operations Plan (MOP) target for 2021 and;
- 6ha shortfall from 2020.

Dump planning is being completed to produce the dump release schedule that will inform how rehabilitation areas will present during 2021. There was no rehabilitation progress towards the 2021 target during January.



MTW Vertebrate Pest Management 2020

The 2020 vertebrate pest programs were coordinated with LLS and other large landholders in the area so all programs were able to be undertaken at the same time across the broader Hunter Valley areas.

The following programs were completed in 2020:

- 1080 ground baiting programmes in autumn and spring targeting wild dogs and foxes – result in the table below.
- Noisy miner ground shoot at Goulburn River BA
- Aerial shoot (NPWS) at Goulburn River BA
- Professional Wild Dog Controller Program

Season	1080 Baiting			
	Total Lethal Baits Laid	Takes by Wild Dog	Takes by Fox	Takes by Feral Pigs
Autumn	120	27	9	1
Spring	120	60	6	-
Total	240	87	15	1

Q1 programs include:

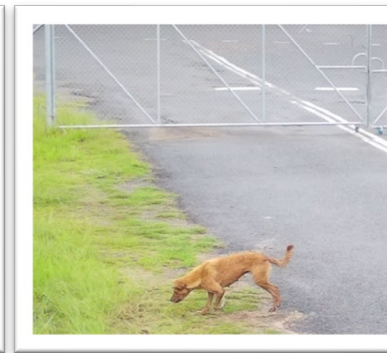
- Feral pig monitoring/trapping MTW: February/March
- Feral pig 1080 baiting and shooting Goulburn River Biodiversity Area: March
- Wild dog trapping/shooting MTW: March/April



Feral pigs at the Goulburn River BA



Wild dogs at MTW

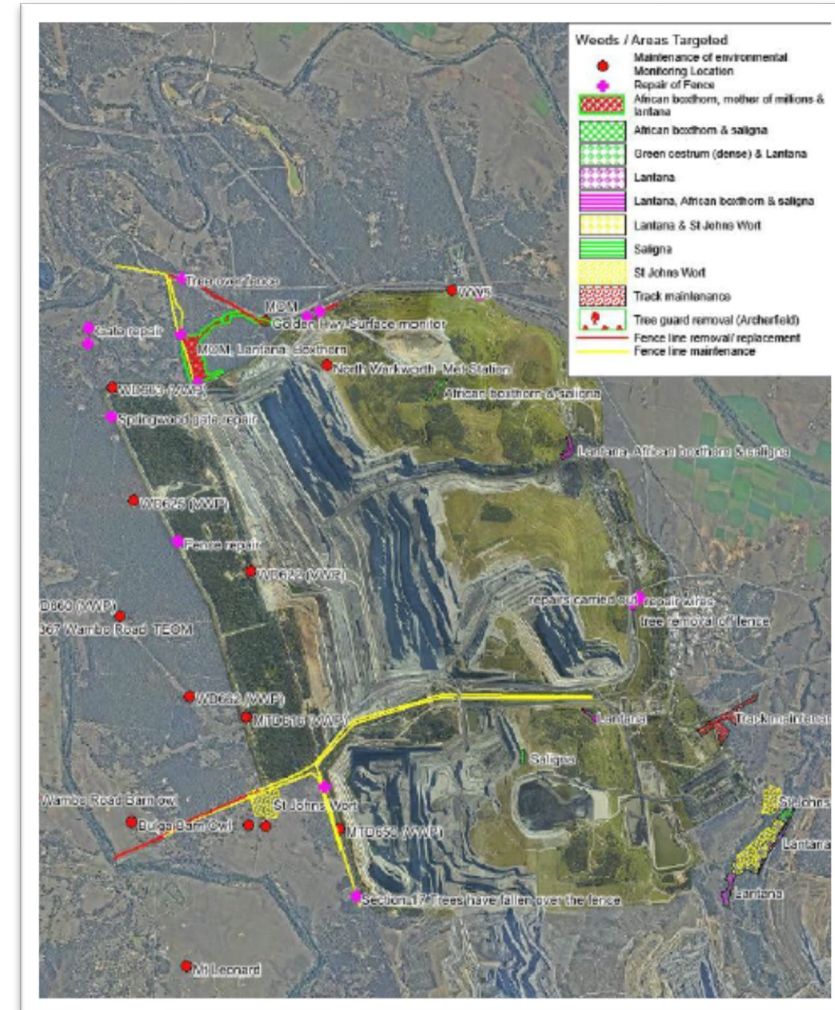


MTW Weed Management 2020

A total of 96 days of weed management work was undertaken on site at MTW during 2020, with 393 ha of land treated, including maintenance of access tracks and environmental monitoring points. The weeds targeted during the 2020 weed management programme were based on the results of the 2019 weed survey.

The species focussed on during treatment included:

- African boxthorn (*Lycium ferocissimum*)
- Castor oil (*Ricinus communis*)
- Farmers friends (*Bidens pilosa*)
- Galenia (*Galenia pubescens*)
- Green cestrum (*Cestrum parqui*)
- Lantana (*Lantana Camara*)
- Mother of millions (*Bryophyllum delagoense*)
- Narrow leaf cotton bush (*Gomphocarpus fruticosus*)
- Opuntia (Pear) species (Tiger, Prickly and Creeping Pear)
- Saligna (*Acacia saligna*)
- St Johns Wort (*Hypericum perforatum*)
- Various grasses (Various spp)



MTW Annual Weed Survey 2020

The management and control of weeds at MTW is governed by the Annual Weed Survey.

The survey lists Weeds of National Significance (WONS), noxious, environmental and other non-declared weed species identified across MTW.

Species identified during the 2020 survey will form the basis of ongoing weed management works during 2021.

Eight WONS were identified during the survey, they included:

- African boxthorn (*Lycium ferocissimum*) State – Asset protection
- Bitou bush (*Chrysanthemoides monilifera subsp. rotundata*) State – Containment
- Fireweed (*Scenecio madagascariensis*) State – Asset protection/ Regional – additional species of concern
- Lantana (*Lantana camara*) State – Asset protection
- Pear Species:
 - Creeping pear (*Opuntia humifusa*) State – Asset protection
 - Prickly pear (*Opuntia stricta*) State – Asset protection/ Additional species of concern
 - Tiger pear (*Opuntia aurantiaca*) State – Asset protection
 - Velvety pear tree (*Opuntia tomentosa*) State – Asset protection

Twelve weeds that are not officially declared or listed were also recorded including:

- Blackberry nightshade (*Solanum nigrum*)
- Century plant (*Agave americana*)
- Golden wreath wattle or Saligna (*Acacia saligna*)
- Inkweed (*Phytolacca octandra*)
- Lambs tongue (*Verbascum Thapsus*)
- Mustard weed (*Sisymbrium sp*)
- Narrow leaved cotton bush (*Gomphocarpus fruticosus*)
- Paddy melon (*Cucumis myriocarpus*)
- Rhodes grass (*Chloris gayana Kunth*)
- Stinking Rodger (*Tangetes minuta*)
- Spiny Rush (*Juncas acutus*)
- Tree Tobacco (*Nicotiana glauca*)

Fifteen other priority weeds were identified at MTW during the survey, including:

- African olive (*Olea europea subsp. cuspidae*) Regional – Asset protection
- African lovegrass (*Eragrostis curvula*) Regional – Additional species of concern
- Balloon vine (*Cardiospermum grandiflorum*) Regional – Additional species of concern
- Blue heliotrope (*Heliotropium amplexicaule*) Regional – Additional species of concern
- Castor oil plant (*Ricinus communis*) General biosecurity duty
- Coolatai grass (*Hyparrhenia hirta*) Regional - Asset protection
- Fleabane (*Conyza bonariensis*) General biosecurity duty
- Galenia (*Galenia pubescens*) Regional – Additional species of concern
- Green cestrum (*Cestrum parqui*) Regional - Asset protection
- Mother of millions (*Bryophyllum delagoense*) Regional - Asset protection
- Pampas grass (*Cortaderia selloana*) Regional - Containment
- Saffron thistle (*Carthamus lanatus*) General biosecurity duty
- St Johns Wort (*Hypericum perforatum*) Regional – Additional species of concern
- Bathurst burr (*Xanthium spinosum*) General biosecurity duty
- Noogoora burr (*Xanthium occidentale*) Regional Additional species of concern

MTW BA Weed Management 2020

Weeds targeted in the Southern and Northern Biodiversity Area in Q4 2020 included:

- Prickly Pear (*Opuntia stricta*)
- Blue Heliotrope (*Heliotropium amplexicaule*)
- Green Cestrum (*Cestrum parqui*)
- Telegraph Weed (*Heterotheca grandiflora*)
- Mother of Millions (*Bryophyllum delagonesse*)
- Patersons Curse (*Echium plantagineum*)
- Castor Oil (*Ricinus communis*)
- Galenia (*Galenia pubescens*)
- Farmers friends (*Biden pilosa*)
- Lantana (*Lantana camara*)
- Various grasses (*Grass spp*)



Green Cestrum control SBA4



Prickly Pear control Northern BA



Exotic annual control stockpile Northern BA



Mother-of-Millions weed control SBA3

MTW Northern BA Planting Program 2020

Warkworth Sands Woodland (WSW) planting progress:

- 9,112m³ of WSW sand was stripped at MTW and hauled to the Northern Biodiversity Area;
- 5,480m³ of this WSW sand has been spread into strips and seeded with native grasses to increase the groundcover diversity;
- These strips were planted with Warkworth Sands Woodland tube stock in August;
- Approximately 1,000 WSW tubestock were planted into the strips in December using a water jet planting technique and trialling new tree guards. This planting was to take advantage of the continued favourable planting conditions.
- 2021 planting strips were sprayed out ahead of the sand getting spread in Q1 2021.
- The additional 3,632m³ was stockpiled and will be spread into strips and seeded with native grass this year with tube stock planting scheduled for 2021.



Additional WSW tubestock planting

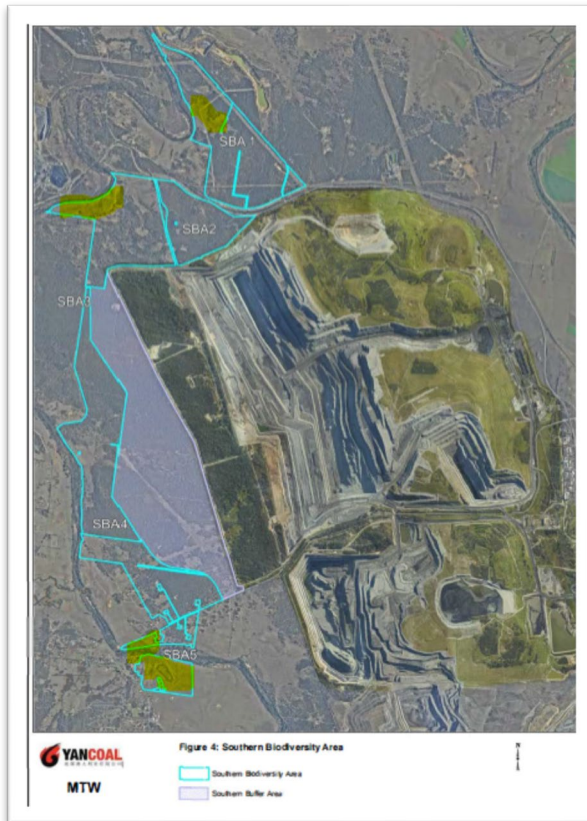


2021 planting strips sprayed out

MTW Southern BA Planting Program 2020

In 2020, restoration work included infill planting Central Hunter Grey Box – Ironbark Woodland and River Oak Forest in the Southern BA and with 7,000 tube stock planted into rip lines. Infill of 2,000 tube stock was planted into Warkworth Sands Woodland plots in the Southern BA.

The highlighted areas in the map below received the 2020 infill planting.



Rive Oak Forest infill planting at SBA5

The next round of planting is planned for autumn and spring 2021 and will include 11,000 Warkworth Sands Woodland tubestock in the Northern BA and 4,400 in the Southern BA. Additional infill of the Central Hunter Grey Box – Ironbark Woodland and River Oak Forest planting areas at the Southern BA will continue as required.

MTW BA Fuel Load Assessments 2020

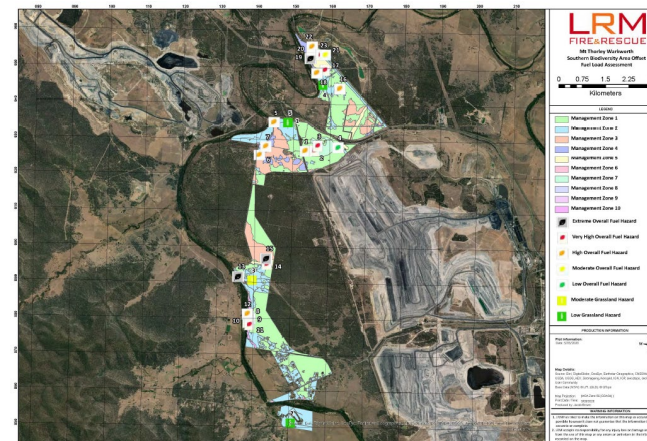
Annual Fuel Load Assessments were undertaken across the Local BAs (Northern and Southern) and the Regional BAs to identify the highest risk offset site and to identify areas for potential prescribed burning.

Due to access issues the Goulburn River BA wasn't included in this round of assessments.

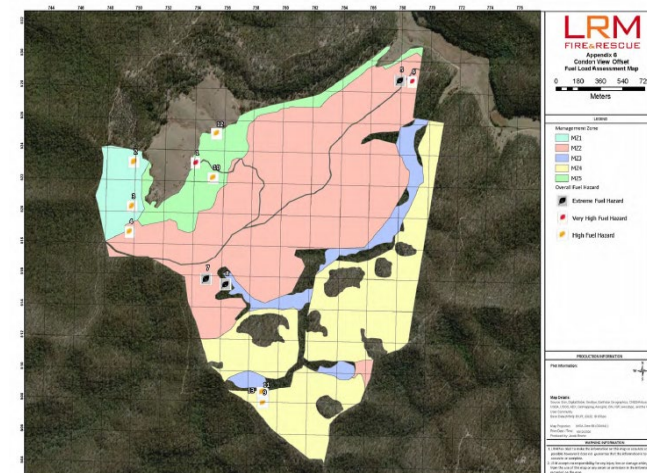
The aim was to conduct a sample of assessments (three plots per vegetation type per offset) in accordance with recommendations from the *Overall Fuel Hazard Assessment Guide v4 (OFHG)*, the *CFA Grassland Curing Guide (GCG)* and the *National Burn Guidelines (Bushfire CRC)*.

The following outcomes were identified:

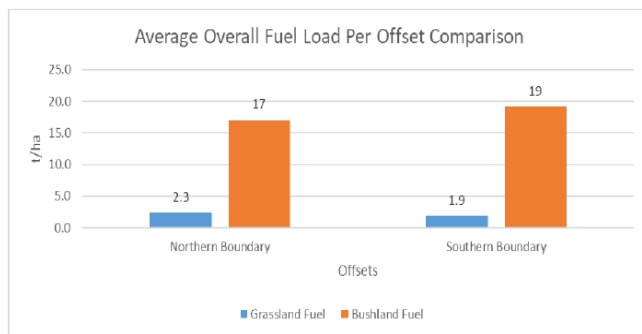
- Comparing offset highest overall fuel hazard, the Southern BA registered the highest at 19 t/ha.
- Comparing offset highest grassland curing, the Northern BA registered the highest at 2.3 t/ha.
- The Southern BA and its proximity to existing cultural heritage sites and mine infrastructure present a higher risk exposure to a bushfire event.
- Condon View BA was the regional offset with the highest fuel load for a single management zone and the highest average fuel load across the offset.



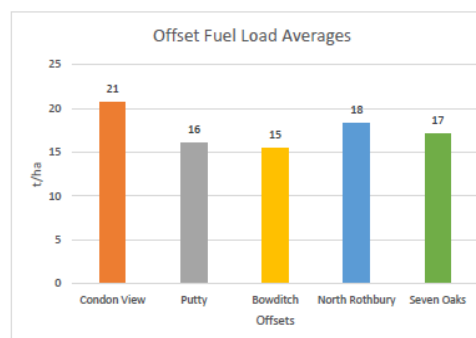
Southern BA Fuel Load Assessment Map



Condon View BA Fuel Load Assessment Map



Highest overall fuel load per site Local BAs



Highest overall fuel load per site Regional BAs

MTW Heritage Management

- The 2020 Historic Heritage Compliance Inspection and Cultural Heritage Compliance Inspections completed in December 2020 by Arrow Heritage.
- MTW has budgeted for works to address significant historic and cultural heritage management actions in 2021 and the 2022 reporting period.



Red Brick House



RAAF



Springwood

MTW Heritage Management - Actions

Historic Heritage Items	Status
Coordinate lawn maintenance across HH sites	Ongoing Contractor engaged to undertake ongoing quarterly maintenance.
Arrange for asbestos to be removed from Red Brick House and RAAF Mess Hall area.	In Progress Quote to be obtained in Q1 2021. Contractor contacted – coming to site February 2021 to inspect and provide quote.
Obtain quotes for tree removal at Springwood and RAAF	In Progress To be obtained in Q1 2021. Contractor contacted – making arrangements to inspect and quote.

Cultural Heritage Items	Status
Coordinate meeting of CHWG for Q1 2021.	Meeting yet to be scheduled.
Obtain quotes for assistance with scar tree re-location in 2021.	In Progress To be obtained in Q1 2021. Contractor contacted – making arrangements to inspect and quote.
Replace signage	Ongoing Commenced in Q4 2020.

MTW Operations - Business Papers

- Business papers provided to CCC prior to meeting
- Includes summary of:
 - Complaints, Incidents, Environmental Monitoring, Rehabilitation, Website Uploads, Community Investment Update
- MTW MEMR for December 2020 to be provided at a later date.

Management Plans / Reporting

- Letter received from DPIE on 1/12/20 in relation to MTW's Independent Environmental Audit which advised MTW's response to audit recommendations are satisfactory.
- The Resources Regulator advised by letter 15/12/20 that no Mining Operations Plan amendment is required to bury Mixed Waste Organic Outputs that are stockpiled at MTW provided this is done in accordance with the POEO (Waste) Regulation amendment.
- Annual Environmental Review report is due at end of March 2021.

Agenda

1. Welcome (Col)
2. Apologies (Col)
3. Declaration of pecuniary interests / conflicts of interest (Col)
4. Business Arising (Col)
5. Correspondence (Col)
6. Confirmation of the previous meeting's minutes (Col)
7. Proponent reports and overview of activities
 - Progress of the project, environmental monitoring and performance, community complaints
8. Other agenda items
9. General business
10. Next meeting

Agenda

1. Welcome (Col)
2. Apologies (Col)
3. Declaration of pecuniary interests / conflicts of interest (Col)
4. Business Arising (Col)
5. Correspondence (Col)
6. Confirmation of the previous meeting's minutes (Col)
7. Proponent reports and overview of activities
 - Progress of the project, environmental monitoring and performance, community complaints
8. Other agenda items
9. **General business**
10. Next meeting

Underground Project EIS Commencing

- Environmental Impact Statement (EIS) for Underground Project is commencing.
- Approximately 1 year to complete EIS.
- EIS early works for some specialist studies field works have commenced (ecology, soils)
- Consultation with various stakeholders from government, community, cultural heritage groups is a key part of the process.
- Social Impact Assessment (SIA) will commence in coming months. SIA will involve Yancoal MTW and our social impact consultant (Square Peg Social Performance) developing the framework for the SIA. This includes contacting some of the stakeholders with a simple survey. Some members of the CCC will be contacted as part of this process. Importantly, there will be many opportunities for consultation and feedback throughout the EIS process and the SIA is only one part of that process.



Underground Project Aspects

- Longwall panels will be located beneath existing MTW open cut operations.
- Project design aims to limit subsidence impacts to existing MTW disturbance areas.
- Approximately 22 years of underground mining.
- No increase in rail movements required (Mt Thorley open cut no longer producing coal).
- No change to open cut mining areas or workforce.



Community update

Community Support Program

The MTW Community Support Program has been completed for 2020. Many events being supported have postponed their timing until later in 2020 or into 2021 due to COVID-19. The following organizations are being supported in 2020 through the Community Support Program:

University of Newcastle Scholarship Program

Singleton Schools Learning Community – Visible Wellbeing Project (VWB techniques help teachers to use the learning process itself as a delivery mechanism to build student wellbeing - for teachers and students in all Singleton schools)

Westpac Rescue Helicopter Service – Hunter Valley Mining Charity Rugby League Competition 2020 (COVID-19 – Support held for event in March 2021)

Newcastle & Hunter Combined Schools ANZAC Service – 2020 Singleton ANZAC Service (COVID-19 – support held for 2021 event)

United Elizabeth Gates Village Auxillary – Shower Commode Chair

Glennies Creek Rural Fire Service – Genfo Knapsacks

Singleton Business Chamber – 2020 Hunter Coal Festival (COVID19 – Support held for event – planned for November 2021)

Rotary Club of Singleton on Hunter – 2020 Singleton Art Prize (COVID19 – Support held for 2021)

Samaritans Foundation – Christmas Lunch in Singleton 2020

Singleton District Girl Guides – Camping Kitchen Supplies

Singleton Theatrical Society – 2020 Annual Musical (COVID19 – Support held for 2021)

University of Newcastle – Upper Hunter Science and Engineering Challenge (now June 2021)

Wildlife Aid Inc – Sponsorship to train the Wildlife Carers

Singleton Council – Christmas on John Street 2020 Sponsorship for Fireworks (may change)

Howes Valley Rural Fire Service – Whitegoods for RFS station kitchen update



The CSP program invests in community groups working in the areas of health, social and community, environment, education and training. The round of applications for 2021 support were advertised in September-October 2020 and closed 6 November 2020. There were 11 applications received. A further update on the successful applications will be provided at the next meeting.

Agenda

1. Welcome (Col)
2. Apologies (Col)
3. Declaration of pecuniary interests / conflicts of interest (Col)
4. Business Arising (Col)
5. Correspondence (Col)
6. Confirmation of the previous meeting's minutes (Col)
7. Proponent reports and overview of activities
 - Progress of the project, environmental monitoring and performance, community complaints
8. Other agenda items
9. General business
10. Next meeting

Future Dates

Next Meeting Date

Date: 26 May 2021

Time: 2:00PM - 4:00PM

Location: Boardroom, North Warkworth Building



SINGLETON
COUNCIL

Mount Thorley Warkworth VPA Community Committee

REPORT UPDATE 2021

CURRENT PROJECTS

- Improvements to Bulga Hall – verandah extension and ceiling replacement \$139,105.89
- Ongoing developments with Bulga Stock Reserve \$60,000 including \$35,590 to development a Plan of Management
- Restoration of the Old Bulga School \$430,000
- Electronic message board \$20,000
- Investigations into the development of the Wollombi Brook Walking Trail – concept plan
- Landscaping concept plans for entrances into the village
- Advertising for a new alternate community committee member
- Ranking of new project nominations
- Advertising for project nominations from the community

COMPLETED PROJECTS

- Recreation area improvements – tree planting, playground equipment \$50,000
- Outdoor exercise equipment – in and around Bulga Recreation Area \$30,000
- Media system installed at Bulga Community Hall \$13,577.20
- Lockable community noticeboard - \$2,000
- Bulga Stock Reserve Plan of Management – adopted by Council, 15 February 2021

PROPOSED PROJECTS

- 3x nomination forms from Milbrodale PS – to be ranked by the committee
- Bulga Stock Reserve – Action list
- Baiame Cave
- Village Masterplan
- Community meeting and BBQ



SINGLETON
COUNCIL



Mount Thorley Warkworth Community Consultative Committee (CCC)

BUSINESS PAPERS February 2021

Contents page

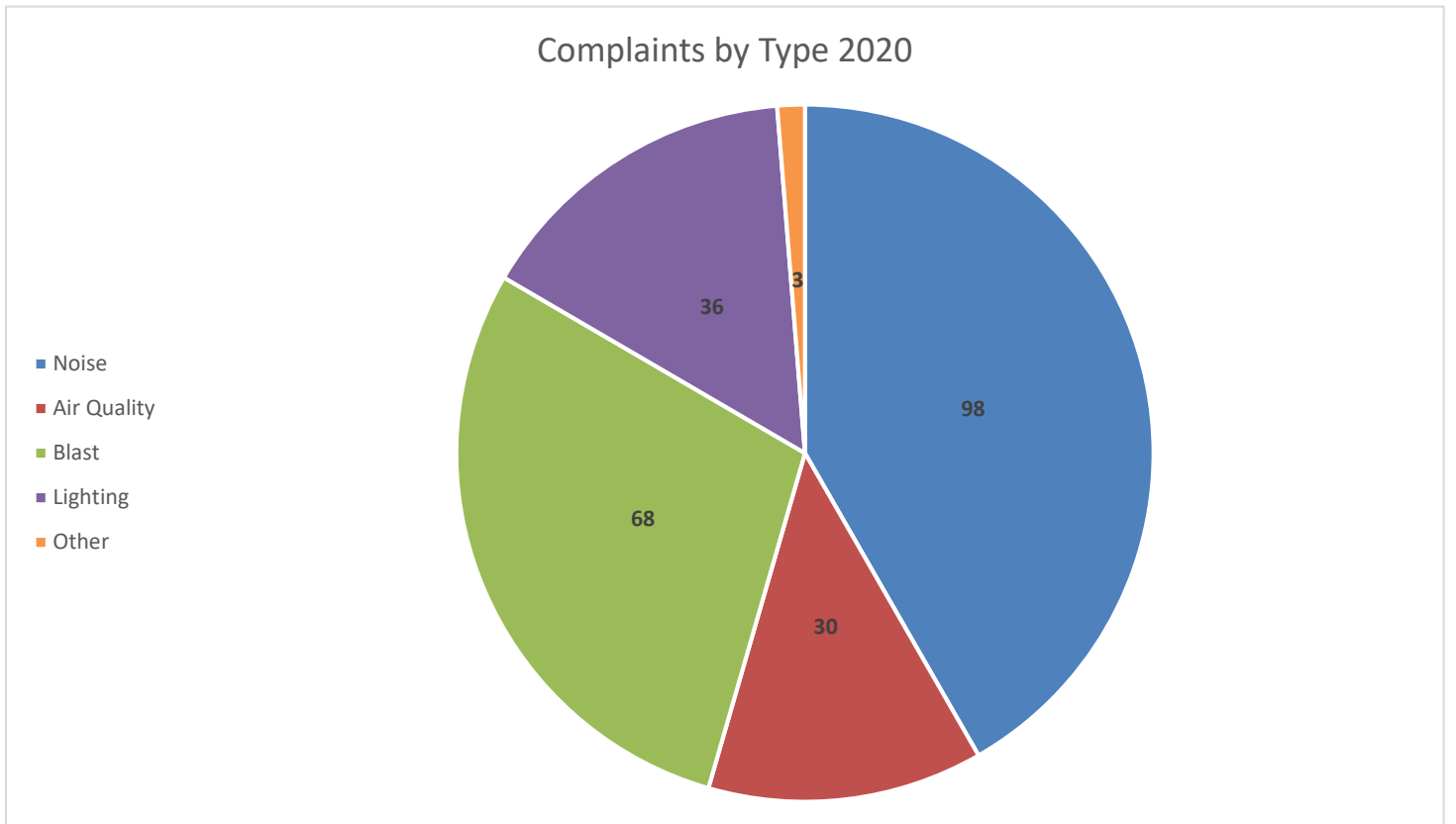
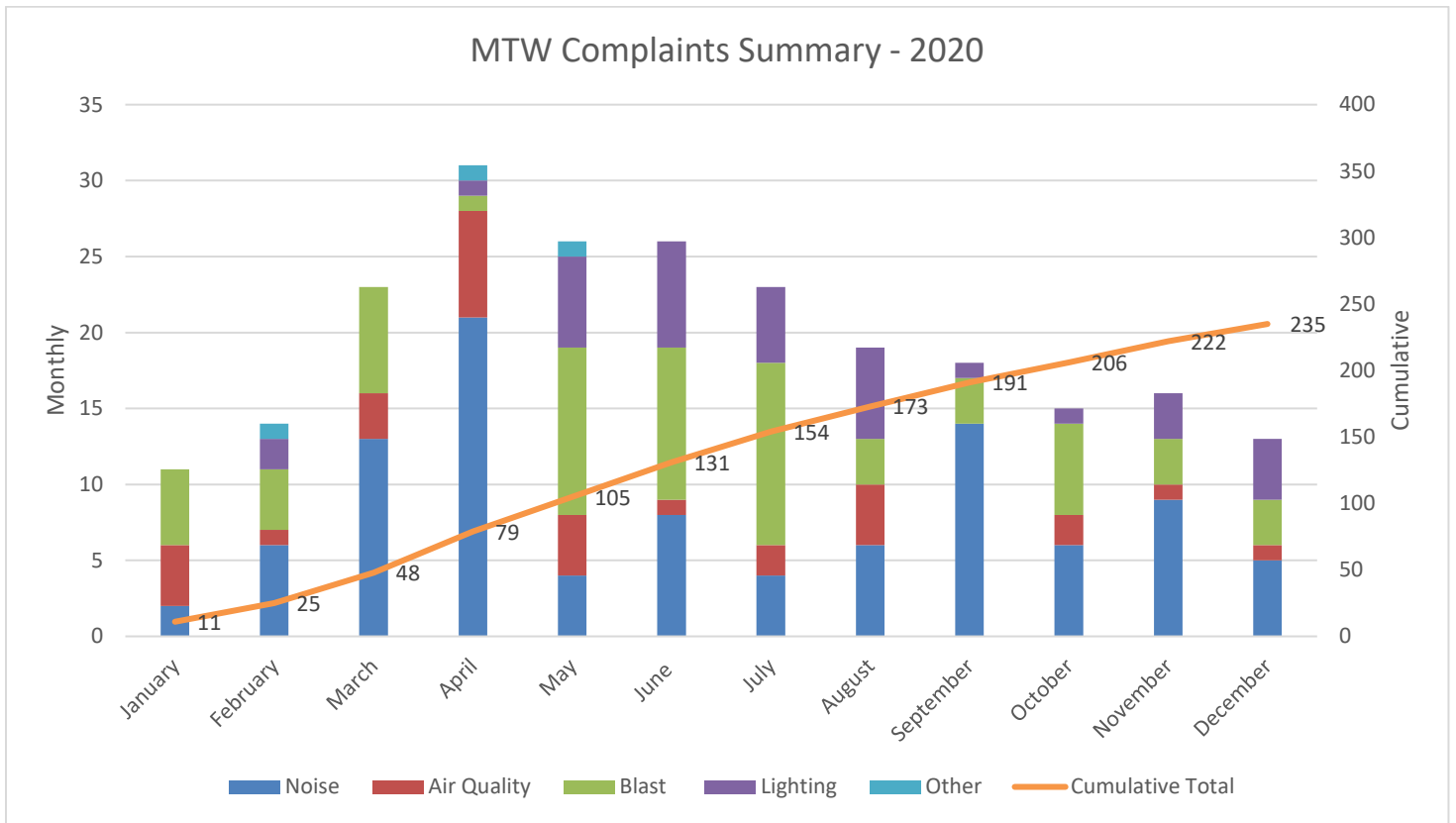
1	Complaints.....	3
2	Incidents	4
3	Environmental Monitoring.....	5
4	Rehabilitation Plan	6
5	Website Uploads	12
6	Yancoal Community Support Program	13

Appendices

- Appendix A – Environmental Monitoring Report September 2020
(included as not provided subsequent to November CCC Meeting)
- Appendix B – Environmental Monitoring Report October 2020
- Appendix C – Environmental Monitoring Report November 2020
- Appendix D - Environmental Monitoring Report December 2020 (to be provided at a later date)

1 COMPLAINTS

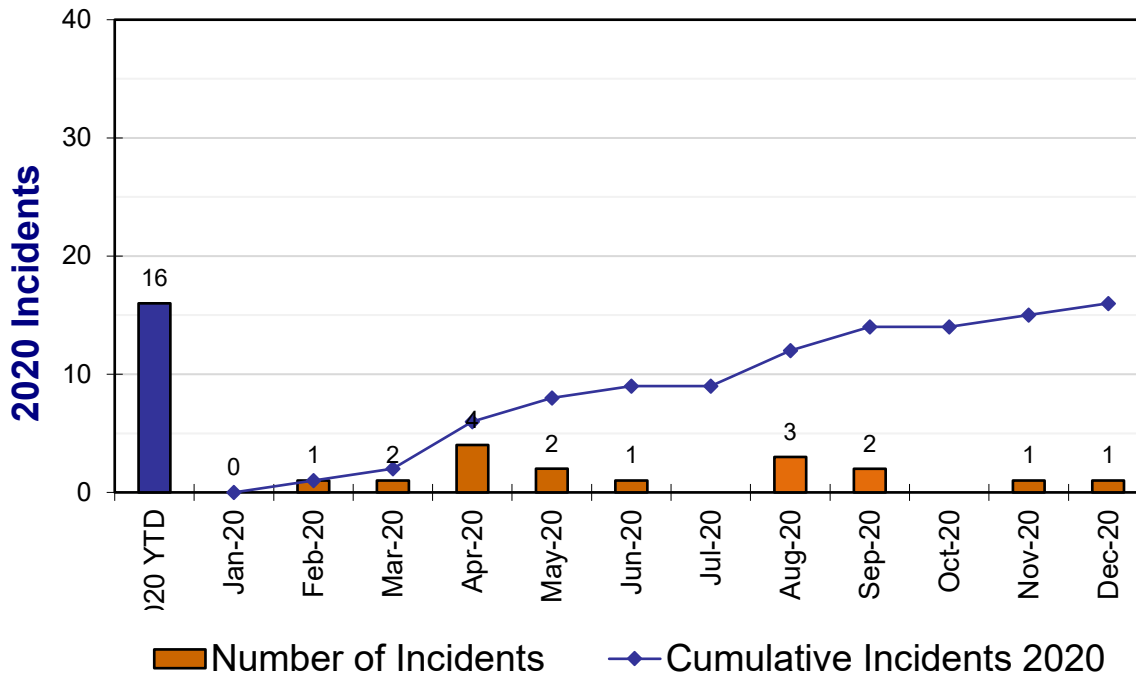
Complaints overview for period – 1 October 2020 to 31 December 2020



2 INCIDENTS

Environmental incidents overview for period – 1 October 2020 to 31 December 2020

MTW Environmental Incidents 2020



Incident Summary for the period 1 October 2020 to 31 December 2020

Date	Details	Key Actions	Aspect
7/11/2020	A minor diesel spill to ground occurred during fuel tank evacuation on Haul Truck 441 at the South Maintenance Workshop	The relevant supervisors were notified. The diesel evacuation pump was stopped, the spill area was contained and cleaned up.	Hydrocarbon
2/12/2020	A small amount of mine affected water spilled to ground near Dam 1N, from a failed pump seal. The pump area is located in the clean water catchment area, and the spilled water was limited to the gravel access road at the base of Dam 1N and a small grassed area adjacent to the road.	The pump was turned off valves isolated. The relevant supervisors were notified. The environmental team were immediately notified and assessed the spill and area. Arrangements were made to clean up the spilled water.	Surface water

3 ENVIRONMENTAL MONITORING

Monthly summaries of environmental monitoring for the period 1 September 2020 to 31 December 2020.

- **September 2020** - Attached as **Appendix A** (included as not provided subsequent to November CCC Meeting)
- **October 2020** - Attached as **Appendix B**
- **November 2020** - Attached as **Appendix C**
- **December 2020** – **Appendix D** (to be provided at a later date)

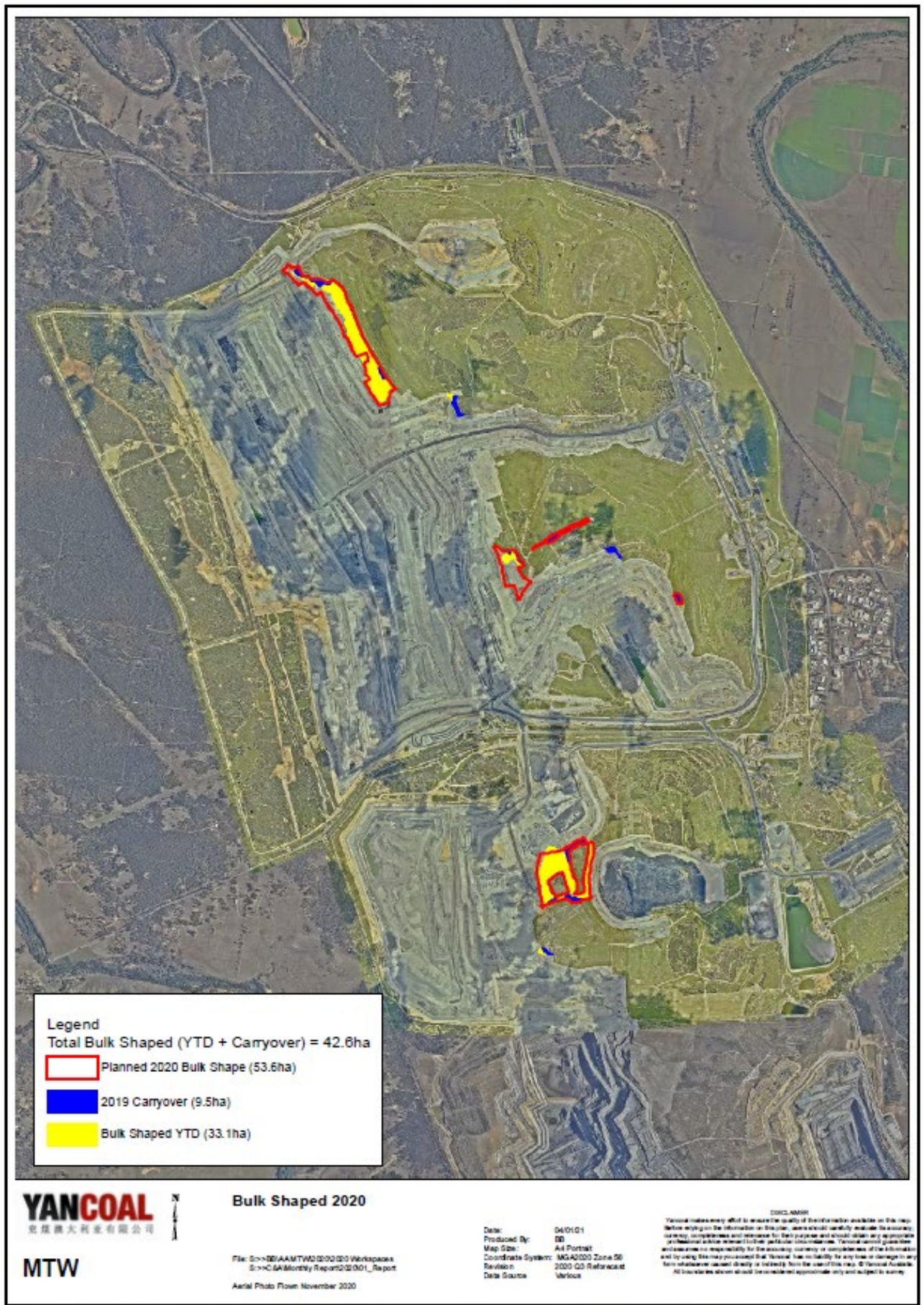
4 REHABILITATION PLAN

The revised rehabilitation planned for 2020 is 44ha, and has been communicated in an updated Mining Operations Plan submitted to the Department of Planning, Industry and Environment and the Resources Regulator on 4 September 2020, which was approved by the Resources Regulator on 24 November 2020. The revised 2020 planned rehabilitation polygons are presented in the maps below. The planned total disturbance is 60ha, which includes 3.3ha of rehabilitation disturbance to upgrade a light vehicle access road from the North ROM area to North Pit North.

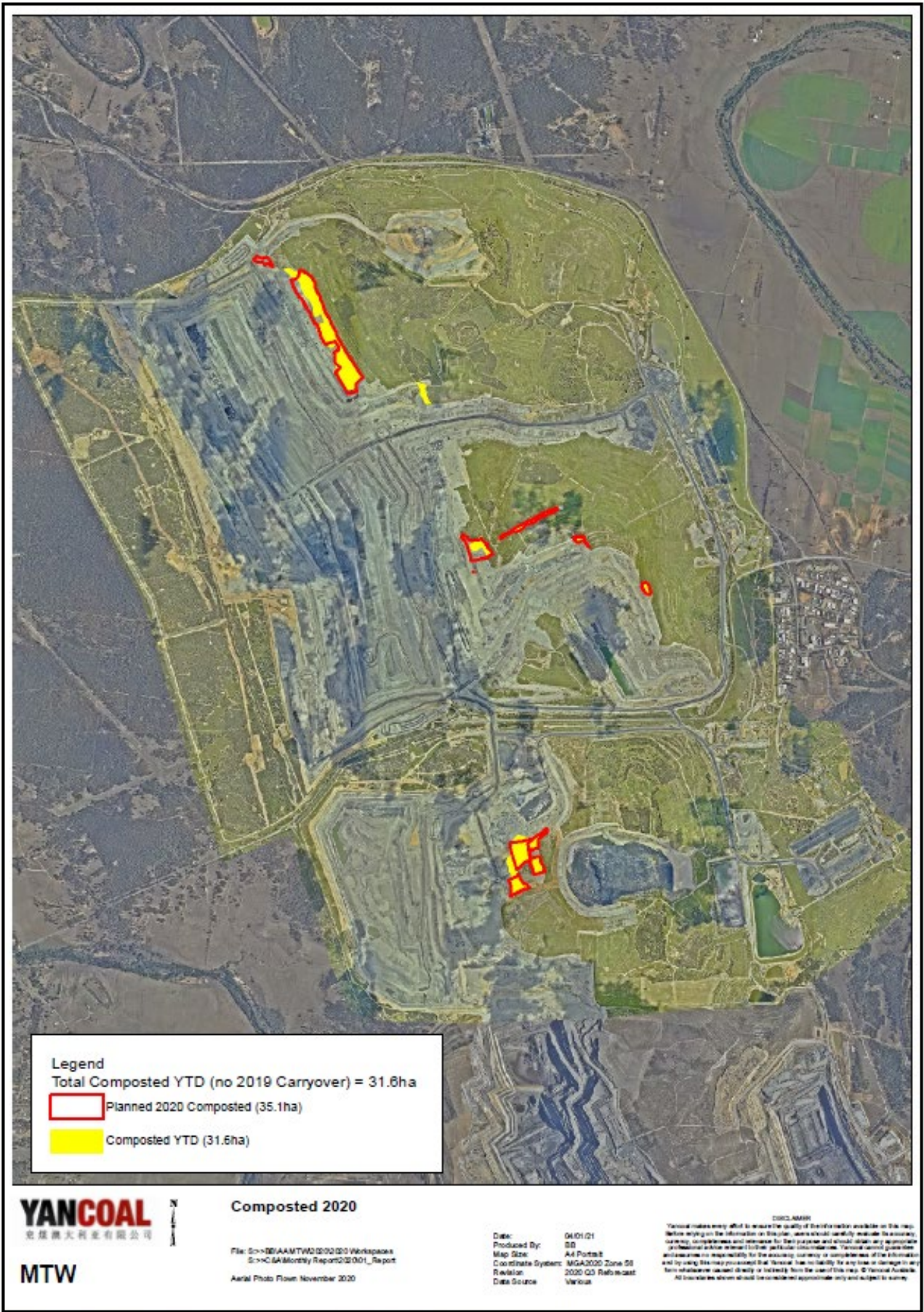
At the end of December there was 38.5ha that had been seeded to the target native vegetation communities and a further 5.8ha that has been bulk shaped in preparation for the later stages of rehabilitation in early 2021.

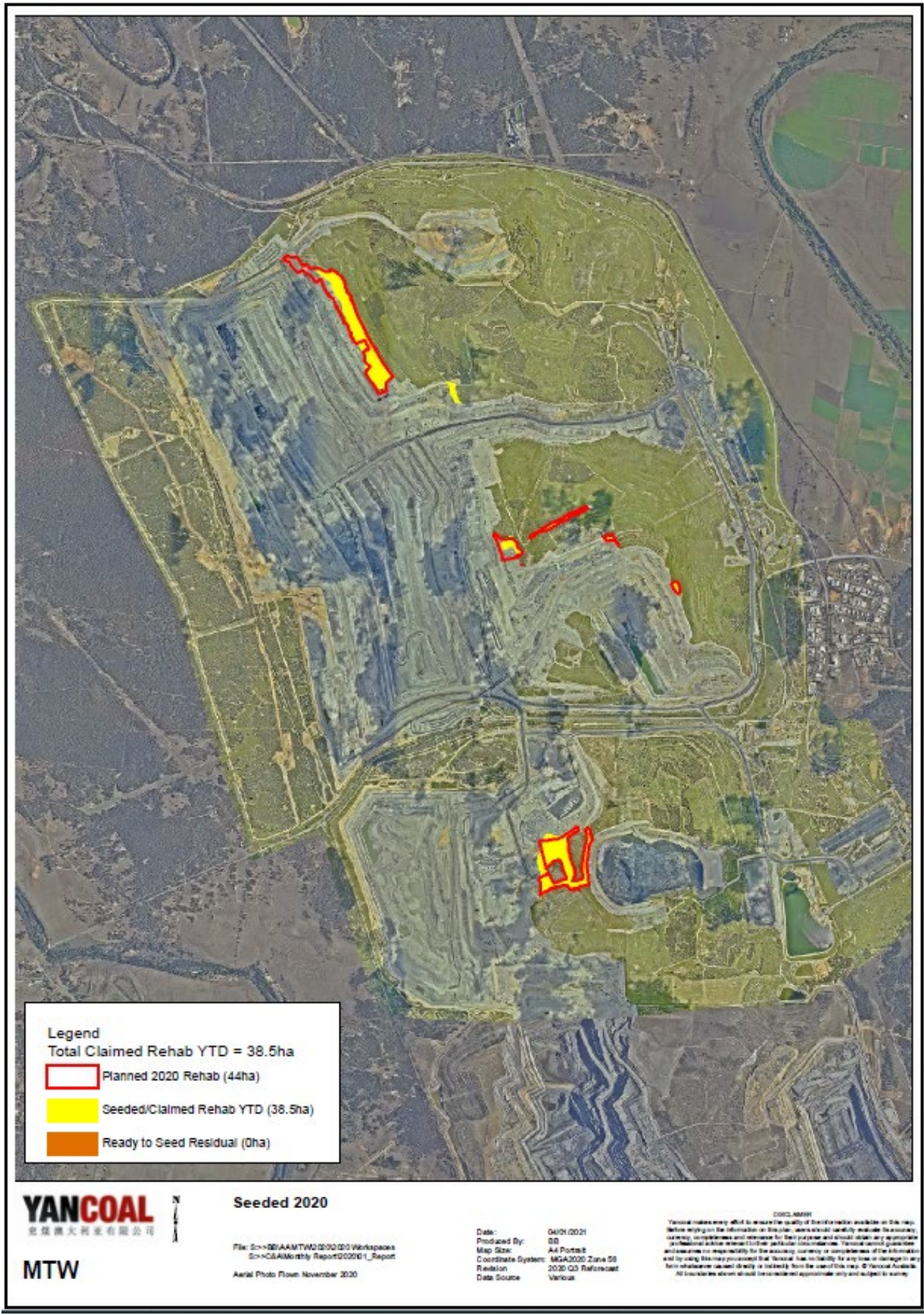
Disturbance completed to the end of December totals 50.6ha and is mainly associated with clearing ahead of mining in West and North Pit.

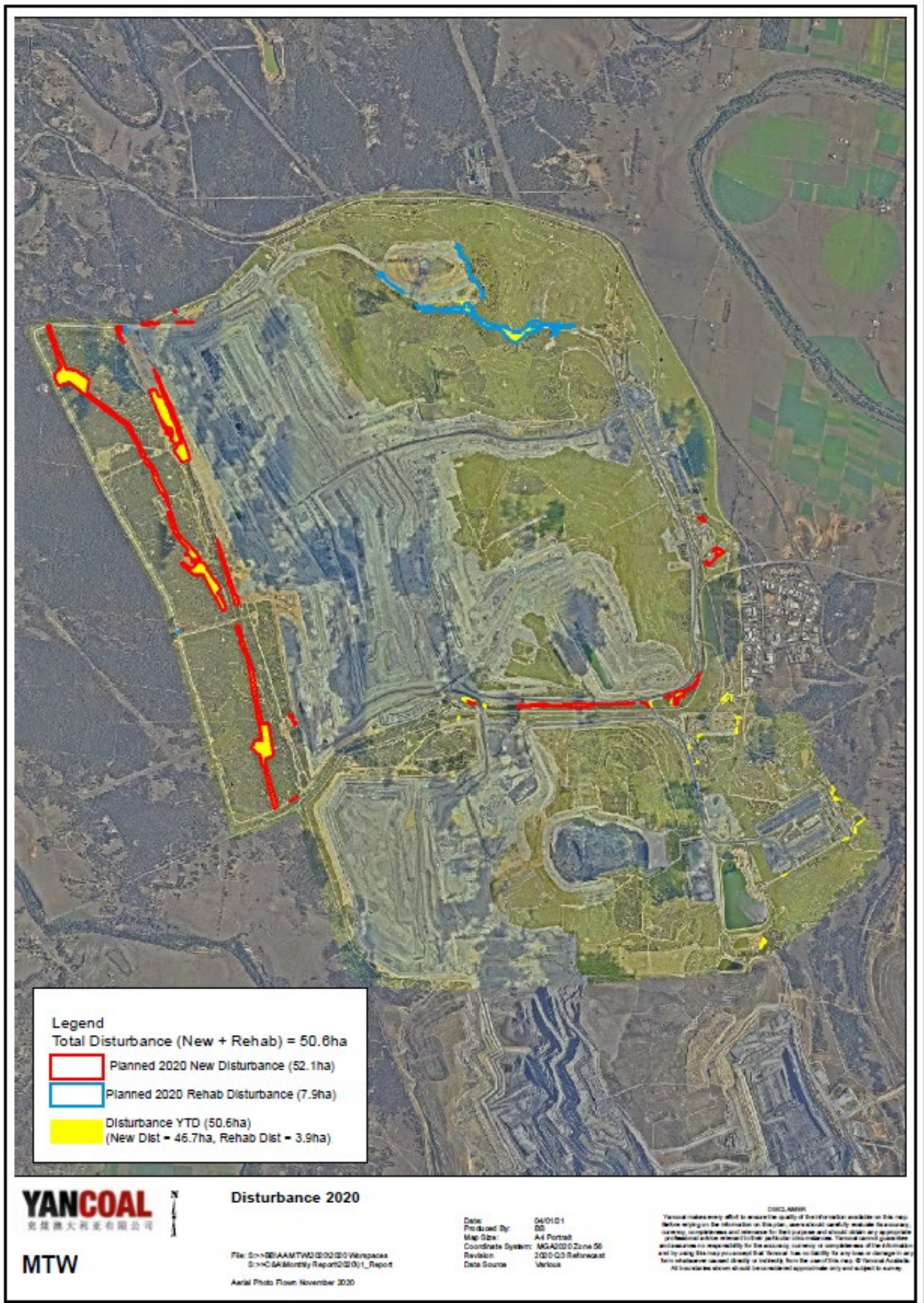
The rehabilitation target for 2021 is 41ha, consisting of the 35ha Mining Operations Plan (MOP) target for 2021 and the 6ha shortfall from the 2020 rehabilitation target. Dump planning is being completed to produce the dump release schedule that will inform how rehabilitation areas will present during 2021. The rehabilitation tracking graphs will be prepared when this information is available. There was no rehabilitation progress towards the 2021 target during January.











5 WEBSITE UPLOADS

The table below is a list of all new documents uploaded to the MTW's website from 11 November 2020 to 12 February 2021. Please refer to the library page of the website for document contents:

<https://insite.yancoal.com.au/document-library/mtw>

Document Title	Upload
Mount Thorley Warkworth Environmental Monitoring Report August 2020	12-Nov -20
Mount Thorley Warkworth Environment Protection Licence 1376 1976 Monitoring Data October 2020	24-Nov-20
Mount Thorley Warkworth Environment Protection Licence 1376 1976 Monitoring Data November 2020	23-Dec-20
Mount Thorley Warkworth 2020 Independent Audit - Audit Report	23-Dec -20
Mount Thorley Warkworth 2020 Independent Audit - Response to Recommendations	23-Dec-20
Mount Thorley Warkworth Environment Protection Licence 1376 1976 Monitoring Data December 2020	17-Jan-21
MTW Mining Operations Plan - Main Text and Plans (<i>update to existing document</i>)	18-Jan-21
MTW Mining Operations Plan - Appendix A (<i>update to existing document</i>)	18-Jan-21
MTW Mining Operations Plan - Appendix B (<i>update to existing document</i>)	18-Jan-21
MTW Mining Operations Plan - Appendix C (<i>update to existing document</i>)	18-Jan-21
MTW Mining Operations Plan - Appendix D (<i>update to existing document</i>)	18-Jan-21
MTW Mining Operations Plan - Appendix E (<i>update to existing document</i>)	18-Jan-21
MTW Mining Operations Plan - Appendix F (<i>update to existing document</i>)	18-Jan-21
MTW Community Consultative Committee Meeting –November 2020 – Presentation	19-Jan-21
MTW Community Consultative Committee Meeting –November 2020 – Business Papers	19-Jan-21
MTW Community Consultative Committee Meeting –November 2020 –Minutes	19-Jan-21
Mount Thorley Warkworth Environmental Monitoring Report September 2020	12-Feb-21
Mount Thorley Warkworth Environmental Monitoring Report October 2020	12-Feb-21
Mount Thorley Warkworth Environmental Monitoring Report November 2020	12-Feb-21

6 YANCOAL COMMUNITY SUPPORT PROGRAM

The MTW Community Support Program continued in 2020. Some events being supported have postponed their timing until later in 2020 or into 2021 due to COVID-19. The following organizations are being supported in 2020 through the Community Support Program:

- University of Newcastle Scholarship Program
- Singleton Schools Learning Community – Visible Wellbeing Project (Mental Health Program for teachers and students in all Singleton schools)
- Westpac Rescue Helicopter Service – Hunter Valley Mining Charity Rugby League Competition 2020 (COVID-19 – Support held for event in March 2021)
- Newcastle & Hunter Combined Schools ANZAC Service – 2020 Singleton ANZAC Service (COVID-19 – event was postponed to November 2020, but did not go ahead. Event format and timing changed to production of a documentary and staging of the streamed event in April 2021.)
- United Elizabeth Gates Village Auxillary – Shower Commode Chair
- Glennies Creek Rural Fire Service – Genfo Knapsacks
- Singleton Business Chamber – 2020 Hunter Coal Festival (COVID19 – Support held for 2021)
- Rotary Club of Singleton on Hunter – 2020 Singleton Art Prize (COVID19 – Support held for 2021)
- Samaritans Foundation – Christmas Lunch in Singleton 2020
- Singleton District Girl Guides – Camping Kitchen Supplies
- Singleton Theatrical Society – 2020 Annual Musical (COVID19 – Support held for 2021)
- University of Newcastle – Upper Hunter Science and Engineering Challenge (COVID19 – event postponed to June 2021)
- Wildlife Aid Inc – Sponsorship to train the Wildlife Carers
- Howes Valley Rural Fire Service – Whitegoods for RFS station kitchen update

The CSP program invests in community groups working in the areas of health, social and community, environment, education and training.

The 2020 round of applications were advertised in September-October 2020 and closed 6 November 2020. There were 11 applications received. A further update on the successful applications will be provided at a later date.

For information please visit <https://insite.yancoal.com.au/community> or email mtw.csp@yancoal.com.au

Appendix A: September Monthly Environmental Monitoring Report

Appendix B: October Monthly Environmental Monitoring Report

Appendix C: November Monthly Environmental Monitoring Report

Appendix D: December Monthly Environmental Monitoring Report

**This Appendix will be provided at a later date.*